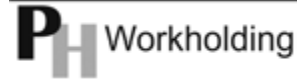


16C & 3J ROUND COLLETS

16C & 3J ROUND COLLETS

With Internal Threads



- Manufactured to exacting standards from alloy steel
- Heat treated threads and spring tempered body ensure accuracy and long life
- Large variety of fractional sizes available
- Size range:
16C Round: 1/16" to 1-5/8" x 64ths
3J Round: 1/16" to 1-3/4" x 64ths
- Collets feature precision internal threads for threaded collet stops



16C Round Smooth Collets-\$49.95 each

Size	Part Number
1/16	16C-RI04-PH
5/64	16C-RI05-PH
3/32	16C-RI06-PH
7/64	16C-RI07-PH
1/8	16C-RI08-PH
9/64	16C-RI09-PH
5/32	16C-RI10-PH
11/64	16C-RI11-PH
3/16	16C-RI12-PH
13/64	16C-RI13-PH
7/32	16C-RI14-PH
15/64	16C-RI15-PH
1/4	16C-RI16-PH
17/64	16C-RI17-PH
9/32	16C-RI18-PH
19/64	16C-RI19-PH
5/16	16C-RI20-PH
21/64	16C-RI21-PH
11/32	16C-RI22-PH
23/64	16C-RI23-PH
3/8	16C-RI24-PH
25/64	16C-RI25-PH
13/32	16C-RI26-PH
27/64	16C-RI27-PH

Size	Part Number
7/16	16C-RI28-PH
29/64	16C-RI29-PH
15/32	16C-RI30-PH
31/64	16C-RI31-PH
1/2	16C-RI32-PH
33/64	16C-RI33-PH
17/32	16C-RI34-PH
35/64	16C-RI35-PH
9/16	16C-RI36-PH
37/64	16C-RI37-PH
19/32	16C-RI38-PH
39/64	16C-RI39-PH
5/8	16C-RI40-PH
41/64	16C-RI41-PH
21/32	16C-RI42-PH
43/64	16C-RI43-PH
11/16	16C-RI44-PH
45/64	16C-RI45-PH
23/32	16C-RI46-PH
47/64	16C-RI47-PH
3/4	16C-RI48-PH
49/64	16C-RI49-PH
25/32	16C-RI50-PH
51/64	16C-RI51-PH

Size	Part Number
13/16	16C-RI52-PH
53/64	16C-RI53-PH
27/32	16C-RI54-PH
55/64	16C-RI55-PH
7/8	16C-RI56-PH
57/64	16C-RI57-PH
29/32	16C-RI58-PH
59/64	16C-RI59-PH
15/16	16C-RI60-PH
61/64	16C-RI61-PH
31/32	16C-RI62-PH
63/64	16C-RI63-PH
1	16C-RI64-PH
1-1/16	16C-RI68-PH
1-1/8	16C-RI72-PH
1-3/16	16C-RI76-PH
1-1/4	16C-RI80-PH
1-5/16	16C-RI84-PH
1-3/8	16C-RI88-PH
1-7/16	16C-RI92-PH
1-1/2	16C-RI96-PH
1-9/16	16C-RI100-PH
1-5/8	16C-RI104-PH
Emergency	166-001S-PH

3J Round Smooth Collets-\$49.95 each

Size	Part Number
1/16"	3J-RI04-PH
5/64"	3J-RI05-PH
3/32"	3J-RI06-PH
7/64"	3J-RI07-PH
1/8"	3J-RI08-PH
9/64"	3J-RI09-PH
5/32"	3J-RI10-PH
11/64"	3J-RI11-PH
3/16"	3J-RI12-PH
13/64"	3J-RI13-PH
7/32"	3J-RI14-PH
15/64"	3J-RI15-PH
1/4"	3J-RI16-PH
17/64"	3J-RI17-PH
9/32"	3J-RI18-PH
19/64"	3J-RI19-PH
5/16"	3J-RI20-PH
21/64"	3J-RI21-PH
11/32"	3J-RI22-PH
23/64"	3J-RI23-PH
3/8"	3J-RI24-PH
25/64"	3J-RI25-PH
13/32"	3J-RI26-PH
27/64"	3J-RI27-PH
7/16"	3J-RI28-PH

Size	Part Number
29/64	3J-RI29-PH
15/32	3J-RI30-PH
31/64	3J-RI31-PH
1/2	3J-RI32-PH
33/64	3J-RI33-PH
17/32	3J-RI34-PH
35/64	3J-RI35-PH
9/16	3J-RI36-PH
37/64	3J-RI37-PH
19/32	3J-RI38-PH
39/64	3J-RI39-PH
5/8	3J-RI40-PH
41/64	3J-RI41-PH
21/32	3J-RI42-PH
43/64	3J-RI43-PH
11/16	3J-RI44-PH
45/64	3J-RI45-PH
23/32	3J-RI46-PH
47/64	3J-RI47-PH
3/4	3J-RI48-PH
49/64	3J-RI49-PH
25/32	3J-RI50-PH
51/64	3J-RI51-PH
13/16	3J-RI52-PH
53/64	3J-RI53-PH

Size	Part Number
27/32	3J-RI54-PH
55/64	3J-RI55-PH
7/8	3J-RI56-PH
57/64	3J-RI57-PH
29/32	3J-RI58-PH
59/64	3J-RI59-PH
15/16	3J-RI60-PH
61/64	3J-RI61-PH
31/32	3J-RI62-PH
63/64	3J-RI63-PH
1	3J-RI64-PH
1-1/16	3J-RI68-PH
1-1/8	3J-RI72-PH
1-3/16	3J-RI76-PH
1-1/4	3J-RI80-PH
1-5/16	3J-RI84-PH
1-3/8	3J-RI88-PH
1-7/16	3J-RI92-PH
1-1/2	3J-RI96-PH
1-9/16	3J-RI100-PH
1-5/8	3J-RI104-PH
1-11/16	3J-RI108-PH
1-3/4	3J-RI112-PH
Emergency	360-001S-PH

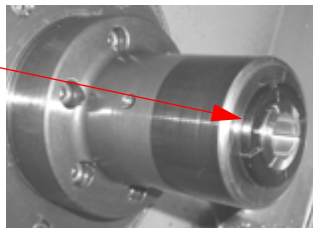
UNIVERSAL COLLET ADAPTER

16C, 3J & 2J to 5C Adapters

Allows you to use 5C collets on your 16C, 3J or 2J Chucks!

FEATURES:

- Available to adapt 5C collets for use in 16C, 3J & 2J collet chucks
- Manufactured from 1144 Steel
- TIR 0.0005
- Made in the USA



Description	Part Number	Price
16C to 5C Adapter	VIC-16CTO5C	\$199.00
3J to 5C Adapter	VIC-3JTO5C	
2J to 5C Adapter	VIC-2JTO5C	

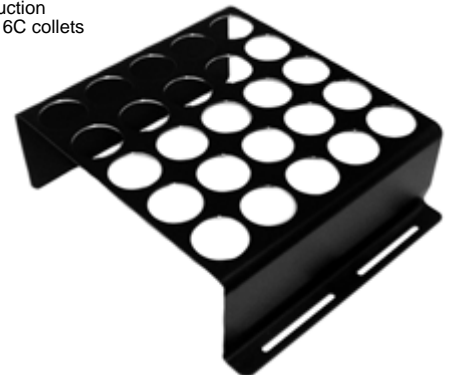
D

3J & 16C COLLET RACKS



FEATURES:

- Protects & organizes your valuable collets
- Sturdy steel construction
- Available for 3J & 16C collets
- 25 holes



Description	Part Number	Price Each
3J Collet Tray	TRAY-125-3J	\$49.00
16C Collet Tray	TRAY-125-16C	\$49.00

B

3J COLLETS

Standard Sizes



3J Collet Dimensions:
Main Body Dia: 2.000"
OAL: 3.750"
External Thread:
1.988" x 20 RH
Internal Thread: None



Square



Hex



Round

SQUARE

Price:	\$77.90 ea.	
Size	Part Number	
1/4	LY-340-016	
5/16	LY-340-020	
3/8	LY-340-024	
7/16	LY-340-028	
1/2	LY-340-032	
9/16	LY-340-036	
5/8	LY-340-040	
11/16	LY-340-044	
3/4	LY-340-048	
13/16	LY-340-052	
7/8	LY-340-056	
15/16	LY-340-060	
1	LY-340-064	
1-1/16	LY-340-068	
1-1/8	LY-340-072	
1-3/16	LY-340-076	
1-1/4	LY-340-080	

HEX

Price:	\$72.20 ea.	
Size	Part Number	
1/4	LY-330-016	
5/16	LY-330-020	
3/8	LY-330-024	
7/16	LY-330-028	
1/2	LY-330-032	
9/16	LY-330-036	
5/8	LY-330-040	
11/16	LY-330-044	
3/4	LY-330-048	
13/16	LY-330-052	
7/8	LY-330-056	
15/16	LY-330-060	
1	LY-330-064	
1-1/16	LY-330-068	
1-1/8	LY-330-072	
1-3/16	LY-330-076	
1-1/4	LY-330-080	
1-5/16	LY-330-084	
1-3/8	LY-330-088	
1-7/16	LY-330-092	
1-1/2	LY-330-096	

ROUND

				Price:	\$63.65 ea.
Size	Part Number	Size	Part Number	Size	Part Number
1/16	LY-300-004	29/64	LY-300-029	27/32	LY-300-054
5/64	LY-300-005	15/32	LY-300-030	55/64	LY-300-055
3/32	LY-300-006	31/64	LY-300-031	7/8	LY-300-056
7/64	LY-300-007	1/2	LY-300-032	57/64	LY-300-057
1/8	LY-300-008	33/64	LY-300-033	29/32	LY-300-058
9/64	LY-300-009	17/32	LY-300-034	59/64	LY-300-059
5/32	LY-300-010	35/64	LY-300-035	15/16	LY-300-060
11/64	LY-300-011	9/16	LY-300-036	61/64	LY-300-061
3/16	LY-300-012	37/64	LY-300-037	31/32	LY-300-062
13/64	LY-300-013	19/32	LY-300-038	63/64	LY-300-063
7/32	LY-300-014	39/64	LY-300-039	1"	LY-300-064
15/64	LY-300-015	5/8	LY-300-040	1-1/16	LY-300-068
1/4	LY-300-016	41/64	LY-300-041	1-1/8	LY-300-072
17/64	LY-300-017	21/32	LY-300-042	1-3/16	LY-300-076
9/32	LY-300-018	43/64	LY-300-043	1-1/4	LY-300-080
19/64	LY-300-019	11/16	LY-300-044	1-5/16	LY-300-084
5/16	LY-300-020	45/64	LY-300-045	1-3/8	LY-300-088
21/64	LY-300-021	23/32	LY-300-046	1-7/16	LY-300-092
11/32	LY-300-022	47/64	LY-300-047	1-1/2	LY-300-096
23/64	LY-300-023	3/4	LY-300-048	1-9/16	LY-300-100
3/8	LY-300-024	49/64	LY-300-049	1-5/8	LY-300-104
25/64	LY-300-025	25/32	LY-300-050	1-11/16	LY-300-108
13/32	LY-300-026	51/64	LY-300-051	1-3/4	LY-300-112
27/64	LY-300-027	13/16	LY-300-052		
7/16	LY-300-028	53/64	LY-300-053		

16C COLLETS



16C Collet Dimensions:
Main Body Dia: 1.889"
OAL: 4.33"
External Thread:
1.870" x 1.75mm RH
Internal Thread:
1.687" x 20 RH

All Lyndex 16c Collets have internal and external threads.



Square



Hex



Round

SQUARE

Price:	\$77.90 ea.	
Size	Part Number	
1/4	LY-164-016	
5/16	LY-164-020	
3/8	LY-164-024	
7/16	LY-164-028	
1/2	LY-164-032	
9/16	LY-164-036	
5/8	LY-164-040	
11/16	LY-164-044	
3/4	LY-164-048	
13/16	LY-164-052	
7/8	LY-164-056	
15/16	LY-164-060	
1	LY-164-064	
1-1/16	LY-164-068	
1-1/8	LY-164-072	

HEX

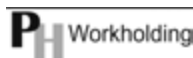
Price:	\$72.20 ea.	
Size	Part Number	
1/4	LY-163-016	
5/16	LY-163-020	
3/8	LY-163-024	
7/16	LY-163-028	
1/2	LY-163-032	
9/16	LY-163-036	
5/8	LY-163-040	
11/16	LY-163-044	
3/4	LY-163-048	
13/16	LY-163-052	
7/8	LY-163-056	
15/16	LY-163-060	
1	LY-163-064	
1-1/16	LY-163-068	
1-1/8	LY-163-072	
1-3/16	LY-163-076	
1-1/4	LY-163-080	
1-5/16	LY-163-084	
1-3/8	LY-163-088	

ROUND

				Price:	\$63.65 ea.
Size	Part Number	Size	Part Number	Size	Part Number
1/16	LY-160-004	7/16	LY-160-028	13/16	LY-160-052
5/64	LY-160-005	29/64	LY-160-029	53/64	LY-160-053
3/32	LY-160-006	15/32	LY-160-030	27/32	LY-160-054
7/64	LY-160-007	31/64	LY-160-031	55/64	LY-160-055
1/8	LY-160-008	1/2	LY-160-032	7/8	LY-160-056
9/64	LY-160-009	33/64	LY-160-033	57/64	LY-160-057
5/32	LY-160-010	17/32	LY-160-034	29/32	LY-160-058
11/64	LY-160-011	35/64	LY-160-035	59/64	LY-160-059
3/16	LY-160-012	9/16	LY-160-036	15/16	LY-160-060
13/64	LY-160-013	37/64	LY-160-037	61/64	LY-160-061
7/32	LY-160-014	19/32	LY-160-038	31/32	LY-160-062
15/64	LY-160-015	39/64	LY-160-039	63/64	LY-160-063
1/4	LY-160-016	5/8	LY-160-040	1	LY-160-064
17/64	LY-160-017	41/64	LY-160-041	1-1/16	LY-160-068
9/32	LY-160-018	21/32	LY-160-042	1-1/8	LY-160-072
19/64	LY-160-019	43/64	LY-160-043	1-3/16	LY-160-076
5/16	LY-160-020	11/16	LY-160-044	1-1/4	LY-160-080
21/64	LY-160-021	45/64	LY-160-045	1-5/16	LY-160-084
11/32	LY-160-022	23/32	LY-160-046	1-3/8	LY-160-088
23/64	LY-160-023	47/64	LY-160-047	1-7/16	LY-160-092
3/8	LY-160-024	3/4	LY-160-048	1-1/2	LY-160-096
25/64	LY-160-025	49/64	LY-160-049	1-9/16	LY-160-100
13/32	LY-160-026	25/32	LY-160-050	1-5/8	LY-160-104
27/64	LY-160-027	51/64	LY-160-051		

16C/3J EMERGENCY COLLETS

Steel With Hardened Threads



Style	Pilot Hole	Brand	Part Number	Price Each	Code
3J	1/16"	PHW	360-001S-PH	\$49.00	E
		LYNDEX	360-001S-LY	\$66.50	C
16C	1/16"	PHW	166-001S-PH	\$49.00	E
		LYNDEX	166-001S-LY	\$66.50	C

16C/3J ACCESSORIES



Collet Stop features Non-Threading Depth Retainer



Style	Part Number	Price
Collet Wrench		
3J	LY-3J-WRENCH	\$65.55
16C	LY-16C-WRENCH	\$56.05
Collet Stops		
3J	LY-370-USA	\$93.10
16C	LY-160-USA	\$78.85

LATHE CHUCKS
LIVE CENTERS

VICE JAWS
VICE ACCESSORIES

STRAIGHT SHANK
COLLET HOLDERS

TAP HOLDERS
DRILL CHUCKS

CARBIDE INSERTS
THREADING/GROOVING

CUTTING TOOLS
MACHINERY

PRECISION TOOLS
DEBURRING

COOLANT/FLUIDS
TOOL STORAGE

5C COLLETS

5C ROUND COLLETS

- Made of high grade steel.
- Hardened and precision ground.
- Premium CRAWFORD Collets, made in England, are guaranteed accurate .0005" maximum T.I.R. and will crossover to OLD Royal "19000- Series" Collets
- BEST VALUE & LYNDEX brands have internal and external threads.



BEST VALUE



D



Size	\$12.95 ea	\$18.62 ea	\$21.70 ea
1/64	-	5C-RI01-CR	-
1/32	5C-RI02-BV	5C-RI02-CR	-
3/64	5C-RI03-BV	5C-RI03-CR	5C-RI03-LY
1/16	5C-RI04-BV	5C-RI04-CR	5C-RI04-LY
5/64	5C-RI05-BV	5C-RI05-CR	5C-RI05-LY
3/32	5C-RI06-BV	5C-RI06-CR	5C-RI06-LY
7/64	5C-RI07-BV	5C-RI07-CR	5C-RI07-LY

Size	\$5.99 ea	\$18.62 ea	\$18.20 ea
1/8	5C-RI08-BV	5C-RI08-CR	5C-RI08-LY
9/64	5C-RI09-BV	5C-RI09-CR	5C-RI09-LY
5/32	5C-RI10-BV	5C-RI10-CR	5C-RI10-LY
11/64	5C-RI11-BV	5C-RI11-CR	5C-RI11-LY
3/16	5C-RI12-BV	5C-RI12-CR	5C-RI12-LY
13/64	5C-RI13-BV	5C-RI13-CR	5C-RI13-LY
7/32	5C-RI14-BV	5C-RI14-CR	5C-RI14-LY
15/64	5C-RI15-BV	5C-RI15-CR	5C-RI15-LY
1/4	5C-RI16-BV	5C-RI16-CR	5C-RI16-LY
17/64	5C-RI17-BV	5C-RI17-CR	5C-RI17-LY
9/32	5C-RI18-BV	5C-RI18-CR	5C-RI18-LY
19/64	5C-RI19-BV	5C-RI19-CR	5C-RI19-LY
5/16	5C-RI20-BV	5C-RI20-CR	5C-RI20-LY
21/64	5C-RI21-BV	5C-RI21-CR	5C-RI21-LY
11/32	5C-RI22-BV	5C-RI22-CR	5C-RI22-LY
23/64	5C-RI23-BV	5C-RI23-CR	5C-RI23-LY

Size	\$5.99 ea	\$18.62 ea	\$18.20 ea
3/8	5C-RI24-BV	5C-RI24-CR	5C-RI24-LY
25/64	5C-RI25-BV	5C-RI25-CR	5C-RI25-LY
13/32	5C-RI26-BV	5C-RI26-CR	5C-RI26-LY
27/64	5C-RI27-BV	5C-RI27-CR	5C-RI27-LY
7/16	5C-RI28-BV	5C-RI28-CR	5C-RI28-LY
29/64	5C-RI29-BV	5C-RI29-CR	5C-RI29-LY
15/32	5C-RI30-BV	5C-RI30-CR	5C-RI30-LY
31/64	5C-RI31-BV	5C-RI31-CR	5C-RI31-LY
1/2	5C-RI32-BV	5C-RI32-CR	5C-RI32-LY
33/64	5C-RI33-BV	5C-RI33-CR	5C-RI33-LY
17/32	5C-RI34-BV	5C-RI34-CR	5C-RI34-LY
35/64	5C-RI35-BV	5C-RI35-CR	5C-RI35-LY
9/16	5C-RI36-BV	5C-RI36-CR	5C-RI36-LY
37/64	5C-RI37-BV	5C-RI37-CR	5C-RI37-LY
19/32	5C-RI38-BV	5C-RI38-CR	5C-RI38-LY
39/64	5C-RI39-BV	5C-RI39-CR	5C-RI39-LY
5/8	5C-RI40-BV	5C-RI40-CR	5C-RI40-LY
41/64	5C-RI41-BV	5C-RI41-CR	5C-RI41-LY
21/32	5C-RI42-BV	5C-RI42-CR	5C-RI42-LY
43/64	5C-RI43-BV	5C-RI43-CR	5C-RI43-LY
11/16	5C-RI44-BV	5C-RI44-CR	5C-RI44-LY
45/64	5C-RI45-BV	5C-RI45-CR	5C-RI45-LY
23/32	5C-RI46-BV	5C-RI46-CR	5C-RI46-LY
47/64	5C-RI47-BV	5C-RI47-CR	5C-RI47-LY
3/4	5C-RI48-BV	5C-RI48-CR	5C-RI48-LY

Size	\$5.99 ea	\$18.62 ea	\$18.20 ea
49/64	5C-RI49-BV	5C-RI49-CR	5C-RI49-LY
25/32	5C-RI50-BV	5C-RI50-CR	5C-RI50-LY
51/64	5C-RI51-BV	5C-RI51-CR	5C-RI51-LY
13/16	5C-RI52-BV	5C-RI52-CR	5C-RI52-LY
53/64	5C-RI53-BV	5C-RI53-CR	5C-RI53-LY
27/32	5C-RI54-BV	5C-RI54-CR	5C-RI54-LY
55/64	5C-RI55-BV	5C-RI55-CR	5C-RI55-LY
7/8	5C-RI56-BV	5C-RI56-CR	5C-RI56-LY
57/64	5C-RI57-BV	5C-RI57-CR	5C-RI57-LY
29/32	5C-RI58-BV	5C-RI58-CR	5C-RI58-LY
59/64	5C-RI59-BV	5C-RI59-CR	5C-RI59-LY
15/16	5C-RI60-BV	5C-RI60-CR	5C-RI60-LY
61/64	5C-RI61-BV	5C-RI61-CR	5C-RI61-LY
31/32	5C-RI62-BV	5C-RI62-CR	5C-RI62-LY
63/64	5C-RI63-BV	5C-RI63-CR	5C-RI63-LY
1	5C-RI64-BV	5C-RI64-CR	5C-RI64-LY
1-1/64	5C-RI65-BV	5C-RI65-CR	5C-RI65-LY
1-1/32	5C-RI66-BV	5C-RI66-CR	5C-RI66-LY
1-3/64	5C-RI67-BV	5C-RI67-CR	5C-RI67-LY
1-1/16	5C-RI68-BV	5C-RI68-CR	5C-RI68-LY
1-5/64	5C-RI69-BV	5C-RI69-CR	5C-RI69-LY
1-3/32	5C-RI70-BV	5C-RI70-CR	5C-RI70-LY
1-7/64	5C-RI71-BV	5C-RI71-CR	5C-RI71-LY
1-1/8	5C-RI72-BV	5C-RI72-CR	5C-RI72-LY

5C ROUND COLLETS Metric Sizes



Size	\$20.58 ea	\$25.20 ea
1mm	5C-RM01.0-CR	-
2mm	5C-RM02.0-CR	-
3mm	5C-RM03.0-CR	5C-RM03.0-LY
4mm	5C-RM04.0-CR	5C-RM04.0-LY
5mm	5C-RM05.0-CR	5C-RM05.0-LY
6mm	5C-RM06.0-CR	5C-RM06.0-LY
7mm	5C-RM07.0-CR	5C-RM07.0-LY
8mm	5C-RM08.0-CR	5C-RM08.0-LY
9mm	5C-RM09.0-CR	5C-RM09.0-LY
10mm	5C-RM10.0-CR	5C-RM10.0-LY
11mm	5C-RM11.0-CR	5C-RM11.0-LY
12mm	5C-RM12.0-CR	5C-RM12.0-LY
13mm	5C-RM13.0-CR	5C-RM13.0-LY
14mm	5C-RM14.0-CR	5C-RM14.0-LY

Size	\$20.58 ea	\$25.20 ea
15mm	5C-RM15.0-CR	5C-RM15.0-LY
16mm	5C-RM16.0-CR	5C-RM16.0-LY
17mm	5C-RM17.0-CR	5C-RM17.0-LY
18mm	5C-RM18.0-CR	5C-RM18.0-LY
19mm	5C-RM19.0-CR	5C-RM19.0-LY
20mm	5C-RM20.0-CR	5C-RM20.0-LY
21mm	5C-RM21.0-CR	-
22mm	5C-RM22.0-CR	-
23mm	5C-RM23.0-CR	-
24mm	5C-RM24.0-CR	-
25mm	5C-RM25.0-CR	-
26mm	5C-RM26.0-CR	-
27mm	5C-RM27.0-CR	-

5C SQUARE COLLETS



Size	\$18.50 ea	\$38.22 ea	\$31.50 ea
1/8	5C-SI08-BV	5C-SI08-CR	5C-SI08-LY
3/16	5C-SI12-BV	5C-SI12-CR	5C-SI12-LY
1/4	5C-SI16-BV	5C-SI16-CR	5C-SI16-LY
5/16	5C-SI20-BV	5C-SI20-CR	5C-SI20-LY
3/8	5C-SI24-BV	5C-SI24-CR	5C-SI24-LY
7/16	5C-SI28-BV	5C-SI28-CR	5C-SI28-LY
1/2	5C-SI32-BV	5C-SI32-CR	5C-SI32-LY
9/16	5C-SI36-BV	5C-SI36-CR	5C-SI36-LY
5/8	5C-SI40-BV	5C-SI40-CR	5C-SI40-LY
11/16	5C-SI04-BV	5C-SI04-CR	5C-SI04-LY
3/4	5C-SI48-BV	5C-SI48-CR	5C-SI48-LY

5C HEX COLLETS



Size	\$18.50 ea	\$38.22 ea	\$31.50 ea
1/8	5C-HI08-BV	5C-HI08-CR	5C-HI08-LY
3/16	5C-HI12-BV	5C-HI12-CR	5C-HI12-LY
1/4	5C-HI16-BV	5C-HI16-CR	5C-HI16-LY
5/16	5C-HI20-BV	5C-HI20-CR	5C-HI20-LY
3/8	5C-HI24-BV	5C-HI24-CR	5C-HI24-LY
7/16	5C-HI28-BV	5C-HI28-CR	5C-HI28-LY
1/2	5C-HI32-BV	5C-HI32-CR	5C-HI32-LY
9/16	5C-HI36-BV	5C-HI36-CR	5C-HI36-LY
5/8	5C-HI40-BV	5C-HI40-CR	5C-HI40-LY
11/16	5C-HI44-BV	5C-HI44-CR	5C-HI44-LY
3/4	5C-HI48-BV	5C-HI48-CR	5C-HI48-LY
13/16	5C-HI52-BV	5C-HI52-CR	5C-HI52-LY

5C COLLET SETS



BEST VALUE

No. Of Collets	Range	Inc.	Part Number	Set Price
15	1/8" to 1"	1/16"	5C-SET15	\$80.86
29	1/8" to 1"	1/32"	5C-SET29	\$156.34
57	1/8" to 1"	1/64"	5C-SET57	\$307.29

BEST VALUE

D

No. of Collets	Range	Inc.	Part Number	Set Price
8	1/8" to 1"	1/8"	5C-SET-RI-08-CR	\$148.96
17	1/16" to 1-1/16"	1/16"	5C-SET-RI-17-CR	\$316.54
33	1/16" to 1-1/16"	1/32"	5C-SET-RI-33-CR	\$614.46
65	1/16" to 1-1/16"	1/64"	5C-SET-RI-65-CR	\$1210.30

5C Metric Round Collet Sets

No. Of Collets	Range	Part Number	Set Price
49	27mm x 0.5mm	5C-SET-RM-49-CR	\$1,008.42
25	27mm x 1mm	5C-SET-RM-25-CR	\$514.50



No. of Collets	Range	Inc.	Part Number	Set Price
8	1/8" to 1"	1/8"	510-008-LY	\$145.60
9	1/8" to 1-1/8"	1/8"	510-009-LY	\$167.30
9	1/16" + 1/8" to 1"	1/8"	510-009S-LY	\$167.30
15	1/8" to 1"	1/16"	510-015-LY	\$273.00
16	1/8" to 1-1/16"	1/16"	510-016-LY	\$294.70
16	1/16" to 1"	1/16"	510-016S-LY	\$294.70
17	1/16" to 1-1/16"	1/16"	510-017-LY	\$316.40
18	1/16" to 1-1/8"	1/16"	510-018-LY	\$299.60
29	1/8" to 1"	1/32"	510-029-LY	\$527.80
31	1/8" to 1-1/16"	1/32"	510-031-LY	\$571.20
31	1/16" to 1"	1/32"	510-031S-LY	\$571.20
33	1/16" to 1-1/16"	1/32"	510-033-LY	\$576.10
35	1/16" to 1-1/16"	1/32"	510-035-LY	\$619.50
61	1/8" to 1-1/16"	1/64"	510-061-LY	\$1,124.20
61	1/16" to 1"	1/64"	510-061S-LY	\$1,124.20
65	1/8" to 1-1/8"	1/64"	510-065-LY	\$1,211.00
65	1/16" to 1-1/16"	1/64"	510-065S-LY	\$1,172.50
69	1/16" to 1-1/8"	1/64"	510-069-LY	\$1,259.30

EMERGENCY COLLETS

Especially well-suited for holding soft or delicate work pieces without marring the surface.



Material	BEST VALUE	Price	LYNDEX	Price	PH Workholding	Price
1/16" Steel	5C-911SI	\$13.95	560-001S-LY	\$25.20	560-001S-PH	\$16.00
1/16" Brass	5C-911BI	\$16.75	LY-560-001B	\$32.20	-	-

5C STEP COLLETS



Step Collets have a soft face for easy machining. Their hardened bodies have no internal threads.

Size	Part Number	Price Each
2"	LY-550-002	\$51.80
3"	LY-550-003	\$60.20
4"	LY-550-004	\$87.50
5"	LY-550-005	\$126.00
6"	LY-550-006	\$146.30

5C COLLET TOOL HOLDER

FEATURES:

- Inexpensive way to hold tooling in CNC and conventional lathes and chuck turrets.
- Reduce need for separate sleeves and tool holders for different boring bar sizes.
- Made in USA.
- Collets sold separately.



E

Dia.	Part #	Price
1-1/2"	CH-150	\$50.00
1-3/4"	CH-175	\$65.00
2"	CH-200	\$70.00
Set of 3	CH-SET3	\$166.50

Buy the set and save 10%!

5C COLLET WRENCH



B

Sierra American Part Number	Price Each
SIE-CW-5C	\$16.75



Lyndex Part Number	Price Each
LY-5C-WRENCH	\$38.50

5C COLLET BLOCKS



Description	Part Number	Price
Hex Block*	LY-570-HEX	\$54.60
Square Block*	LY-570-SQUARE	\$54.60
Quick Closer	LY-570-CLOSE	\$54.60
Set (All of the Above)	LY-570-BLOCK	\$163.80
Tightening Ring	LY-570-RING	\$8.40

*Comes w/ tightening ring

5C COLLET STOPS



Description	Part Number	Price Each
Adjustable Threaded Collet Stop	LY-570-ADJ	\$12.60
Universal Collet Stop	LY-570-UNI	\$36.40

BEST VALUE

Rod	Length	Part Number	Price
1/2"	4"	ST-1	\$7.48

COLLET RACKS

- Organize Your Collets
- No More Ruined Collets
- Made From Hi-impact Plastic



Collet Type	No. of Holes	Material	Manufacturer	Part Number	Price Each
5C	76	Hi-Impact Plastic	Sierra American	SIE-5C-76	\$29.89
R8	52	Hi-Impact Plastic	Sierra American	SIE-R8-52	\$28.75
5C	30	Steel	Huot	HU-14600	\$32.40
R8	16	Steel	Huot	HU-14625	\$32.40



LATHE CHUCKS
LIVE CENTERS
VISE ACCESSORIES
VISE JAWS
STRAIGHT SHANK COLLET HOLDERS
TAP HOLDERS
DRILL CHUCKS
CARBIDE INSERTS
THREADING/GROOVING
CUTTING TOOLS
MACHINERY
PRECISION TOOLS
DEBURRING
COOLANT/FLUIDS
TOOL STORAGE