

# COLLET EXTENSIONS/STRAIGHT SHANK HOLDERS

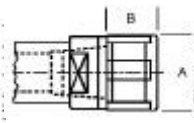
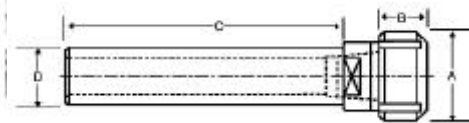
E



## ER STRAIGHT SHANK HOLDERS

### ER-8 to ER-20 Collet Extensions

- Crafted from heat treated alloy steel
- Available with round or flatted shank
- Supplied with collet nut & backup screw



Collet Series	Shank D	C	Nut Dia A	Len of Nut B	Type of Nut	Shank Type	Part Number	Price Each	Thread of Nut	Nut Part Number	Wrench Part Number	
ER 08	0.500	3.70	0.48	0.44	MINI	Round	S-E08R05-37N-V	\$75.00	-	CN-ER08MN	WR-ER08MN	
	0.500	3.74	0.48	0.44	HEX	Round	S-E08R05-37H-R	\$75.00	-	CN-ER08MN	WR-E08MN	
ER 11	0.500	3.15	0.63	0.44	MINI	Round	S-E11R05-31N-R	\$64.60	M13 X .75	CN-ER11MN	WR-ER11MN	
	0.500	3.94	0.63	0.44	MINI	Round	S-E11R05-39N-R	\$64.60	M13 X .75	CN-ER11MN	WR-ER11MN	
	0.500	6.20	0.75	0.44	HEX	Flat	S-E11F05-62H-V	\$63.00	M14 X .75	CN-ER11H	WR-ER11H	
	0.500	6.20	0.75	0.44	HEX	Round	S-E11R05-62H-R	\$61.00	M14 X .75	CN-ER11H	WR-ER11H	
	0.500	6.20	0.75	0.44	HEX	Round	S-E11R05-62H-V	\$61.00	M14 X .75	CN-ER11H	WR-ER11H	
	0.500	6.61	0.63	0.44	MINI	Round	S-E11R05-66N-R	\$71.25	M13 X .75	CN-ER11MN	WR-ER11MN	
	0.625	2.50	0.63	0.44	MINI	Round	S-E11R06-25N-R	\$71.25	M13 X .75	CN-ER11MN	WR-ER11MN	
	0.625	3.00	0.63	0.44	MINI	Round	S-E11R06-30N-R	\$71.25	M13 X .75	CN-ER11MN	WR-ER11MN	
	0.625	6.20	0.75	0.44	HEX	Flat	S-E11F06-62H-V	\$71.00	M14 X .75	CN-ER11H	WR-ER11H	
	0.625	6.20	0.75	0.44	HEX	Round	S-E11R06-62H-R	\$69.00	M14 X .75	CN-ER11H	WR-ER11H	
ER 16	0.625	6.20	0.75	0.44	HEX	Round	S-E11R06-62H-V	\$69.00	M14 X .75	CN-ER11H	WR-ER11H	
	0.625	6.61	0.63	0.44	MINI	Round	S-E11R06-66N-R	\$71.25	M13 X .75	CN-ER11MN	WR-ER11MN	
	0.500	6.60	0.87	0.67	MINI	Round	S-E16R05-66N-R	\$85.00	M19 X 1	CN-ER16MN	WR-ER16MN	
	0.625	3.15	0.87	0.67	MINI	Round	S-E16R06-31N-R	\$75.00	M19 X 1	CN-ER16MN	WR-ER16MN	
	0.625	3.76	1.10	0.67	HEX	Round	S-E16R06-37H-R	\$65.00	M22 X 1.5	CN-ER16H	WR-ER16H	
	0.625	4.13	0.87	0.67	MINI	Round	S-E16R06-41N-R	\$71.25	M19 X 1	CN-ER16MN	WR-ER16MN	
	0.625	6.06	0.87	0.67	MINI	Round	S-E16R06-60N-R	\$80.75	M19 X 1	CN-ER16MN	WR-ER16MN	
	0.625	7.04	0.87	0.67	MINI	Round	S-E16R06-70N-R	\$80.75	M19 X 1	CN-ER16MN	WR-ER16MN	
	0.750	2.50	1.1	0.67	HEX	Flat	S-E16F07-25H-V	\$62.00	M22 X 1.5	CN-ER16H	WR-ER16H	
	0.750	2.50	1.10	0.67	HEX	Round	S-E16R07-25H-R	\$60.00	M22 X 1.5	CN-ER16H	WR-ER16H	
	0.750	2.50	1.10	0.67	HEX	Round	S-E16R07-25H-V	\$60.00	M22 X 1.5	CN-ER16H	WR-ER16H	
	0.750	3.10	0.87	0.67	MINI	Round	S-E16R07-31N-R	\$71.25	M19 X 1	CN-ER16MN	WR-ER16MN	
	0.750	3.65	1.10	0.67	HEX	Round	S-E16R07-36H-R	\$60.00	M22 X 1.5	CN-ER16H	WR-ER16H	
	0.750	4.00	1.1	0.67	HEX	Flat	S-E16F07-40H-V	\$67.00	M22 X 1.5	CN-ER16H	WR-ER16H	
	0.750	4.00	1.10	0.67	HEX	Round	S-E16R07-40H-R	\$65.00	M22 X 1.5	CN-ER16H	WR-ER16H	
	0.750	4.00	1.10	0.67	HEX	Round	S-E16R07-40H-V	\$65.00	M22 X 1.5	CN-ER16H	WR-ER16H	
	0.750	4.52	0.87	0.67	MINI	Round	S-E16R07-45N-R	\$71.25	M19 X 1	CN-ER16MN	WR-ER16MN	
	0.750	5.00	1.10	0.67	HEX	Round	S-E16R07-50H-R	\$60.00	M22 X 1.5	CN-ER16H	WR-ER16H	
	ER 20	0.750	5.28	0.87	0.67	MINI	Round	S-E16R07-52N-R	\$80.75	M19 X 1	CN-ER16MN	WR-ER16MN
		0.750	6.00	1.1	0.67	HEX	Flat	S-E16F07-60H-V	\$72.00	M22 X 1.5	CN-ER16H	WR-ER16H
0.750		6.00	1.10	0.67	HEX	Round	S-E16R07-60H-R	\$70.00	M22 X 1.5	CN-ER16H	WR-ER16H	
0.750		6.00	1.10	0.67	HEX	Round	S-E16R07-60H-V	\$70.00	M22 X 1.5	CN-ER16H	WR-ER16H	
0.750		6.40	0.87	0.67	MINI	Round	S-E16R07-64N-R	\$85.50	M19 X 1	CN-ER16MN	WR-ER16MN	
0.750		7.44	0.87	0.67	MINI	Round	S-E16R07-74N-R	\$90.00	M19 X 1	CN-ER16MN	WR-ER16MN	
1.000		2.50	1.1	0.67	HEX	Flat	S-E16F10-25H-V	\$62.00	M22 X 1.5	CN-ER16H	WR-ER16H	
1.000		2.50	1.10	0.67	HEX	Round	S-E16R10-25H-R	\$60.00	M22 X 1.5	CN-ER16H	WR-ER16H	
1.000		2.50	1.10	0.67	HEX	Round	S-E16R10-25H-V	\$60.00	M22 X 1.5	CN-ER16H	WR-ER16H	
1.000		4.00	1.1	0.67	HEX	Flat	S-E16F10-40H-V	\$67.00	M22 X 1.5	CN-ER16H	WR-ER16H	
1.000		4.00	1.10	0.67	HEX	Round	S-E16R10-40H-R	\$65.00	M22 X 1.5	CN-ER16H	WR-ER16H	
1.000		4.00	1.10	0.67	HEX	Round	S-E16R10-40H-V	\$65.00	M22 X 1.5	CN-ER16H	WR-ER16H	
1.000		6.00	1.1	0.67	HEX	Flat	S-E16F10-60H-V	\$72.00	M22 X 1.5	CN-ER16H	WR-ER16H	
1.000		6.00	1.10	0.67	HEX	Round	S-E16R10-60H-R	\$70.00	M22 X 1.5	CN-ER16H	WR-ER16H	
1.000	6.00	1.10	0.67	HEX	Round	S-E16R10-60H-V	\$70.00	M22 X 1.5	CN-ER16H	WR-ER16H		
ER 20	0.750	2.50	1.1	0.75	MINI	Flat	S-E20F07-25N-V	\$62.00	M24 X 1	CN-ER20MN	WR-E20MN	
	0.750	2.50	1.34	0.75	HEX	Round	S-E20R07-25H-R	\$60.00	M25 X 1.5	CN-ER20H	WR-ER20H	
	0.750	2.50	1.10	0.75	MINI	Round	S-E20R07-25N-V	\$60.00	M24 X 1	CN-ER20MN	WR-E20MN	
	0.750	3.93	1.10	0.75	MINI	Round	S-E20R07-39N-R	\$95.00	M24 X 1	CN-ER20MN	WR-ER20MN	
	0.750	3.94	1.10	0.75	MINI	Round	S-E20R07-39N-R	\$85.50	M24 X 1	CN-ER20MN	WR-ER20MN	
	0.750	4.00	1.1	0.75	MINI	Flat	S-E20F07-40N-V	\$67.00	M24 X 1	CN-ER20MN	WR-E20MN	
	0.750	4.00	1.34	0.75	HEX	Round	S-E20R07-40H-R	\$65.00	M25 X 1.5	CN-ER20H	WR-ER20H	
	0.750	4.00	1.10	0.75	MINI	Round	S-E20R07-40N-V	\$65.00	M24 X 1	CN-ER20MN	WR-E20MN	
	0.750	6.00	1.34	0.75	HEX	Flat	S-E20F07-60H-V	\$72.00	M25 X 1.5	CN-ER20H	WR-ER20H	
	0.750	6.00	1.34	0.75	HEX	Round	S-E20R07-60H-R	\$70.00	M25 X 1.5	CN-ER20H	WR-ER20H	
0.750	6.00	1.34	0.75	HEX	Round	S-E20R07-60H-V	\$70.00	M25 X 1.5	CN-ER20H	WR-ER20H		

Call Us Today For All Of Your Machine Tool Needs!

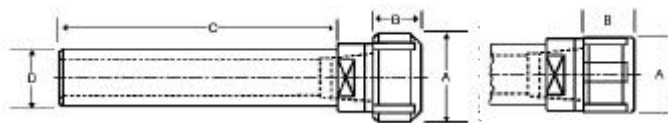
# COLLET EXTENSIONS/STRAIGHT SHANK HOLDERS

## ER STRAIGHT SHANK HOLDERS



### ER-20 to ER-32 Collet Extensions

Crafted from heat treated alloy steel  
Available with round or flattened shank  
Supplied with collet nut & backup screw



Mini Nut

Collet Series	Shank D	C	Nut Dia	Length of Nut	Type of Nut	Shank Type	Part Number	Price Each	Thread of Nut	Nut Part Number	Wrench Part Number
ER 20	1.000	2.50	1.34	0.75	HEX	Flat	S-E20F10-25H-V	\$62.00	M25 X 1.5	CN-ER20H	WR-ER20H
	1.000	2.50	1.34	0.75	HEX	Round	S-E20R10-25H-R	\$60.00	M25 X 1.5	CN-ER20H	WR-ER20H
	1.000	2.50	1.34	0.75	HEX	Round	S-E20R10-25H-V	\$60.00	M25 X 1.5	CN-ER20H	WR-ER20H
	1.000	4.00	1.34	0.75	HEX	Flat	S-E20F10-40H-V	\$67.00	M25 X 1.5	CN-ER20H	WR-ER20H
	1.000	4.00	1.34	0.75	HEX	Round	S-E20R10-40H-R	\$65.00	M25 X 1.5	CN-ER20H	WR-ER20H
	1.000	4.00	1.34	0.75	HEX	Round	S-E20R10-40H-V	\$65.00	M25 X 1.5	CN-ER20H	WR-ER20H
	1.000	5.20	1.10	0.75	MINI	Round	S-E20R10-52N-R	\$75.00	M24 X 1	CN-ER20MN	WR-ER20MN
	1.000	6.00	1.34	0.75	HEX	Flat	S-E20F10-60H-V	\$72.00	M25 X 1.5	CN-ER20H	WR-ER20H
	1.000	6.00	1.34	0.75	HEX	Round	S-E20R10-60H-R	\$70.00	M25 X 1.5	CN-ER20H	WR-ER20H
	1.000	6.00	1.34	0.75	HEX	Round	S-E20R10-60H-V	\$70.00	M25 X 1.5	CN-ER20H	WR-ER20H
1.000	6.30	1.10	0.75	MINI	Round	S-E20R10-63N-R	\$104.50	M24 X 1	CN-ER20MN	WR-ER20MN	
ER 25	0.500	4.00	1.65	0.79	SPANNER	Round	S-E25R05-40S-R	\$70.00	M32 X 1.5	CN-ER25S	WR-ER25S
	0.750	2.50	1.65	0.79	SPANNER	Flat	S-E25F07-25S-V	\$67.00	M32 X 1.5	CN-ER25S	WR-ER25S
	0.750	2.50	1.65	0.79	SPANNER	Round	S-E25R07-25S-R	\$65.00	M32 X 1.5	CN-ER25S	WR-ER25S
	0.750	2.50	1.65	0.79	SPANNER	Round	S-E25R07-25S-V	\$65.00	M32 X 1.5	CN-ER25S	WR-ER25S
	0.750	4.00	1.65	0.79	SPANNER	Flat	S-E25F07-40S-V	\$72.00	M32 X 1.5	CN-ER25S	WR-ER25S
	0.750	4.00	1.65	0.79	SPANNER	Round	S-E25R07-40S-R	\$70.00	M32 X 1.5	CN-ER25S	WR-ER25S
	0.750	4.00	1.65	0.79	SPANNER	Round	S-E25R07-40S-V	\$70.00	M32 X 1.5	CN-ER25S	WR-ER25S
	0.750	6.00	1.65	0.79	SPANNER	Flat	S-E25F07-60S-V	\$77.00	M32 X 1.5	CN-ER25S	WR-ER25S
	0.750	6.00	1.65	0.79	SPANNER	Round	S-E25R07-60S-R	\$75.00	M32 X 1.5	CN-ER25S	WR-ER25S
	0.750	6.00	1.65	0.79	SPANNER	Round	S-E25R07-60S-V	\$75.00	M32 X 1.5	CN-ER25S	WR-ER25S
	1.000	2.50	1.65	0.79	SPANNER	Flat	S-E25F10-25S-V	\$67.00	M32 X 1.5	CN-ER25S	WR-ER25S
	1.000	2.50	1.65	0.79	SPANNER	Round	S-E25R10-25S-R	\$65.00	M32 X 1.5	CN-ER25S	WR-ER25S
	1.000	2.50	1.65	0.79	SPANNER	Round	S-E25R10-25S-V	\$65.00	M32 X 1.5	CN-ER25S	WR-ER25S
	1.000	4.00	1.65	0.79	SPANNER	Flat	S-E25F10-40S-V	\$72.00	M32 X 1.5	CN-ER25S	WR-ER25S
	1.000	4.00	1.65	0.79	SPANNER	Round	S-E25R10-40S-R	\$70.00	M32 X 1.5	CN-ER25S	WR-ER25S
1.000	4.00	1.65	0.79	SPANNER	Round	S-E25R10-40S-V	\$70.00	M32 X 1.5	CN-ER25S	WR-ER25S	
1.000	5.31	1.38	0.79	MINI	Round	S-E25R10-53N-R	\$95.00	M30 X 1	CN-ER25MN	WR-ER25MN	
1.000	6.00	1.65	0.79	SPANNER	Flat	S-E25F10-60S-V	\$77.00	M32 X 1.5	CN-ER25S	WR-ER25S	
1.000	6.00	1.65	0.79	SPANNER	Round	S-E25R10-60S-R	\$75.00	M32 X 1.5	CN-ER25S	WR-ER25S	
1.000	6.00	1.65	0.79	SPANNER	Round	S-E25R10-60S-V	\$75.00	M32 X 1.5	CN-ER25S	WR-ER25S	
1.250	6.00	1.65	0.79	SPANNER	Round	S-E25R12-60S-F	\$80.00	M32 X 1.5	CN-ER25S	WR-ER25S	
ER 32	1.000	2.50	1.97	0.87	SPANNER	Flat	S-E32F10-25S-V	\$72.00	M40 X 1.4	CN-ER32S	WR-ER32S
	1.000	2.50	1.97	0.87	SPANNER	Round	S-E32R10-25S-R	\$70.00	M40 X 1.4	CN-ER32S	WR-ER32S
	1.000	2.50	1.97	0.87	SPANNER	Round	S-E32R10-25S-V	\$70.00	M40 X 1.4	CN-ER32S	WR-ER32S
	1.000	4.00	1.97	0.87	SPANNER	Flat	S-E32F12-40S-V	\$77.00	M40 X 1.4	CN-ER32S	WR-ER32S
	1.000	4.00	1.97	0.87	SPANNER	Round	S-E32R12-40S-R	\$75.00	M40 X 1.4	CN-ER32S	WR-ER32S
	1.000	4.00	1.97	0.87	SPANNER	Round	S-E32R12-40S-V	\$75.00	M40 X 1.4	CN-ER32S	WR-ER32S
	1.000	6.00	1.97	0.87	SPANNER	Flat	S-E32F10-60S-V	\$82.00	M40 X 1.4	CN-ER32S	WR-ER32S
	1.000	6.00	1.97	0.87	SPANNER	Round	S-E32R10-60S-R	\$80.00	M40 X 1.4	CN-ER32S	WR-ER32S
	1.000	6.00	1.97	0.87	SPANNER	Round	S-E32R10-60S-V	\$80.00	M40 X 1.4	CN-ER32S	WR-ER32S
	1.000	50.00	1.97	0.87	SPANNER	Round	S-E32R12-60S-R	\$70.00	M40 X 1.4	CN-ER32S	WR-ER32S
	1.250	2.00	1.97	0.87	SPANNER	Round	S-E32R12-25S-R	\$70.00	M40 X 1.4	CN-ER32S	WR-ER32S
	1.250	2.50	1.97	0.87	SPANNER	Flat	S-E32F12-25S-V	\$72.00	M40 X 1.4	CN-ER32S	WR-ER32S
	1.250	2.50	1.97	0.87	SPANNER	Round	S-E32R12-25S-V	\$70.00	M40 X 1.4	CN-ER32S	WR-ER32S
	1.250	4.00	1.97	0.87	SPANNER	Flat	S-E32F12-40S-V	\$77.00	M40 X 1.4	CN-ER32S	WR-ER32S
	1.250	4.00	1.97	0.87	SPANNER	Round	S-E32R12-40S-R	\$75.00	M40 X 1.4	CN-ER32S	WR-ER32S
	1.250	4.00	1.97	0.87	SPANNER	Round	S-E32R12-40S-V	\$75.00	M40 X 1.4	CN-ER32S	WR-ER32S
	1.250	6.00	1.97	0.87	SPANNER	Flat	S-E32F12-60S-V	\$82.00	M40 X 1.4	CN-ER32S	WR-ER32S
	1.250	6.00	1.97	0.87	SPANNER	Round	S-E32R12-60S-R	\$80.00	M40 X 1.4	CN-ER32S	WR-ER32S
1.250	6.00	1.97	0.87	SPANNER	Round	S-E32R12-60S-V	\$80.00	M40 X 1.4	CN-ER32S	WR-ER32S	
1.250	50.00	1.97	0.87	SPANNER	Round	S-E32R12-60S-R	\$70.00	M40 X 1.4	CN-ER32S	WR-ER32S	
1.500	6.20	1.97	0.87	SPANNER	Round	S-E32R15-62S-F	\$115.00	M40 X 1.4	CN-ER32S	WR-ER32S	

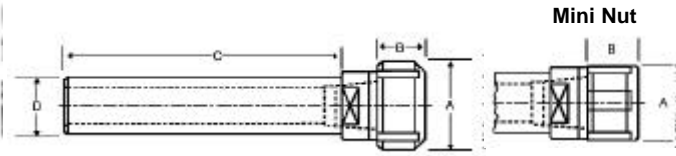
Call Us Or Visit Our Website For Our Complete Selection!

# COLLET EXTENSIONS/STRAIGHT SHANK HOLDERS

## ER STRAIGHT SHANK HOLDERS

### ER-40 Collet Extensions

- Crafted from heat treated alloy steel
- Available with round or flattened shank
- Supplied with collet nut & backup screw



Collet Series	Shank D	C	Nut Dia	Length of Nut	Type of Nut	Shank Type	Part Number	Price Each	Thread of Nut	Nut Part Number	Wrench Part Number
ER 40	1.000	2.50	2.48	0.98	SPANNER	Flat	S-E40F10-25S-V	\$82.00	M50 X 1.5	CN-ER40S	WR-ER40S
	1.000	2.50	2.48	0.98	SPANNER	Round	S-E40R10-25S-R	\$80.00	M50 X 1.5	CN-ER40S	WR-ER40S
	1.000	2.50	2.48	0.98	SPANNER	Round	S-E40R10-25S-V	\$80.00	M50 X 1.5	CN-ER40S	WR-ER40S
	1.000	4.00	2.48	0.98	SPANNER	Flat	S-E40F10-40S-V	\$87.00	M50 X 1.5	CN-ER40S	WR-ER40S
	1.000	4.00	2.48	0.98	SPANNER	Round	S-E40R10-40S-R	\$85.00	M50 X 1.5	CN-ER40S	WR-ER40S
	1.000	4.00	2.48	0.98	SPANNER	Round	S-E40R10-40S-V	\$85.00	M50 X 1.5	CN-ER40S	WR-ER40S
	1.000	6.00	2.48	0.98	SPANNER	Flat	S-E40F10-60S-V	\$92.00	M50 X 1.5	CN-ER40S	WR-ER40S
	1.000	6.00	2.48	0.98	SPANNER	Round	S-E40R10-60S-R	\$90.00	M50 X 1.5	CN-ER40S	WR-ER40S
	1.000	6.00	2.48	0.98	SPANNER	Round	S-E40R10-60S-V	\$90.00	M50 X 1.5	CN-ER40S	WR-ER40S
	1.250	2.50	2.48	0.98	SPANNER	Flat	S-E40F12-25S-V	\$82.00	M50 X 1.5	CN-ER40S	WR-ER40S
	1.250	2.50	2.48	0.98	SPANNER	Round	S-E40R12-25S-R	\$80.00	M50 X 1.5	CN-ER40S	WR-ER40S
	1.250	2.50	2.48	0.98	SPANNER	Round	S-E40R12-25S-V	\$80.00	M50 X 1.5	CN-ER40S	WR-ER40S
	1.250	4.00	2.48	0.98	SPANNER	Flat	S-E40F12-40S-V	\$87.00	M50 X 1.5	CN-ER40S	WR-ER40S
	1.250	4.00	2.48	0.98	SPANNER	Round	S-E40R12-40S-R	\$85.00	M50 X 1.5	CN-ER40S	WR-ER40S
	1.250	4.00	2.48	0.98	SPANNER	Round	S-E40R12-40S-V	\$85.00	M50 X 1.5	CN-ER40S	WR-ER40S
	1.250	6.00	2.48	0.98	SPANNER	Flat	S-E40F12-60S-V	\$92.00	M50 X 1.5	CN-ER40S	WR-ER40S
	1.250	6.00	2.48	0.98	SPANNER	Round	S-E40R12-60S-R	\$90.00	M50 X 1.5	CN-ER40S	WR-ER40S
	1.250	6.00	2.48	0.98	SPANNER	Round	S-E40R12-60S-V	\$90.00	M50 X 1.5	CN-ER40S	WR-ER40S

## ER COLLET NUTS & WRENCHES

- Replacement nuts & wrenches for ER collet holders
- Nuts available in mini, hex & spanner
- For ER Collets, please see pages 164-169



HEX NUT



SPANNER NUT



MINI NUT



HEX WRENCH



SPANNER WRENCH

Collet Series	Nut Type	Nut Dia		Nut Length		Threads	Part Number	Price Each	Ref #	Brand	Collet Wrench	
		mm	Inch	mm	Inch						Part Number	Price Each
ER08	Mini	12.2	.48	11.3	.44	-	CN-ER08MN-K	\$25.00	-	Kingston	WR-ER08MN	\$15.00
ER11	Mini	16	0.63	11.3	.44	M13 X .75	CN-ER11MN-K	\$25.00	CN-111	Kingston	WR-ER11MN	\$15.00
	Hex	19	0.75	11.3	.44	M14 X .75	CN-ER11H-K	\$25.00	CN-110	Kingston	WR-ER11H	\$20.00
ER16	Mini	22	0.87	17	.67	M19 X 1	CN-ER16MN-K	\$28.00	CN-162	Kingston	WR-ER16MN	\$15.00
	Hex	28	1.10	17	.67	M22 X 1.5	CN-ER16H-K	\$25.00	CN-160	Kingston	WR-ER16H	\$20.00
ER20	Mini	28	1.10	19	.75	M24 X 1	CN-ER20MN-K	\$32.00	CN-201	Kingston	WR-ER20MN	\$17.00
	Hex	34	1.34	19	.75	M25 X 1.5	CN-ER20H-K	\$25.00	CN-200	Kingston	WR-ER20H	\$20.00
ER25	Mini	35	1.38	20	.79	M30 X 1	CN-ER25MN-K	\$35.00	-	Kingston	WR-ER25MN	\$18.00
	Spanner	42	1.65	20	.79	M32 X 1.5	CN-ER25S-K	\$27.00	CN-250	Kingston	WR-ER25S	\$24.00
ER32	Spanner	50	1.97	22	.87	M40 X 1.4	CN-ER32S-K	\$27.00	CN-320	Kingston	WR-ER32S	\$24.00
ER40	Spanner	63	2.48	25	.98	M50 X 1.5	CN-ER40S-K	\$45.00	CN-400	Kingston	WR-ER40S	\$24.00

Call Us Today For All Of Your Machine Tool Needs!

# COLLET EXTENSIONS/STRAIGHT SHANK HOLDERS

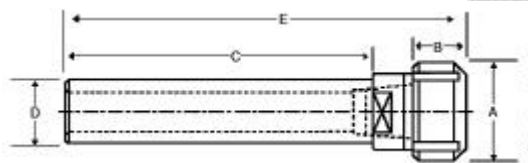
E

## TG STRAIGHT SHANK HOLDERS



### TG Series Collet Extensions

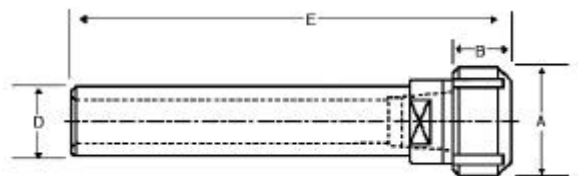
Crafted from heat treated alloy steel  
Available with round or flattened shank  
Supplied with collet nut & backup screw



Collet Series	Shank D	C	OAL	Nut Dia	Length of Nut	Type of Nut	Shank Type	Part Number	Price Each	Nut Part Number	Wrench Part Number
TG 75	0.750	2.75	5.79	2.10	2.44	HEX	Flat	S-T75F07-27H-G	\$234.40	CN-TG75-K	WR-TG75-K
	0.750	2.75	5.79	2.10	2.44	HEX	Flat	S-T75F07-27H-K	\$187.52	CN-TG75-K	WR-TG75-K
	1.000	2.75	5.79	2.10	2.44	HEX	Flat	S-T75F10-27H-G	\$244.80	CN-TG75-K	WR-TG75-K
	1.000	2.75	5.79	2.10	2.44	HEX	Flat	S-T75F10-27H-K	\$195.84	CN-TG75-K	WR-TG75-K
	1.250	3.25	6.30	2.10	2.44	HEX	Flat	S-T75F12-32H-G	\$253.60	CN-TG75-K	WR-TG75-K
	1.250	3.25	6.30	2.10	2.44	HEX	Flat	S-T75F12-32H-K	\$202.88	CN-TG75-K	WR-TG75-K
	1.250	6.00	8.5	2.10	2.44	HEX	Round	S-T75R12-60H-K	\$225.00	CN-TG75-K	WR-TG75-K
	1.500	3.37	6.42	2.10	2.44	HEX	Flat	S-T75F15-33H-G	\$261.20	CN-TG75-K	WR-TG75-K
	1.500	3.37	6.42	2.10	2.44	HEX	Flat	S-T75F15-33H-K	\$208.96	CN-TG75-K	WR-TG75-K
	1.500	6.00	7.8	2.10	2.44	HEX	Round	S-T75R15-60H-K	\$235.00	CN-TG75-K	WR-TG75-K
	1.750	3.50	6.54	2.10	2.44	HEX	Flat	S-T75F17-35H-G	\$263.20	CN-TG75-K	WR-TG75-K
	1.750	3.50	6.54	2.10	2.44	HEX	Flat	S-T75F17-35H-K	\$210.56	CN-TG75-K	WR-TG75-K
	2.000	4.00	7.05	2.10	2.44	HEX	Flat	S-T75F20-40H-G	\$270.40	CN-TG75-K	WR-TG75-K
	2.000	4.00	7.05	2.10	2.44	HEX	Flat	S-T75F20-40H-K	\$216.32	CN-TG75-K	WR-TG75-K
TG 100	0.750	2.75	5.98	2.44	1.41	HEX	Flat	S-T10F07-27H-G	\$234.40	CN-TG100-K	WR-TG100-K
	0.750	2.75	5.98	2.44	1.41	HEX	Flat	S-T10F07-27H-K	\$187.52	CN-TG100-K	WR-TG100-K
	1.000	2.75	5.98	2.44	1.41	HEX	Flat	S-T10F10-27H-G	\$244.80	CN-TG100-K	WR-TG100-K
	1.000	2.75	5.98	2.44	1.41	HEX	Flat	S-T10F10-27H-K	\$195.84	CN-TG100-K	WR-TG100-K
	1.250	3.25	6.50	2.44	1.41	HEX	Flat	S-T10F12-32H-G	\$253.60	CN-TG100-K	WR-TG100-K
	1.250	3.25	6.50	2.44	1.41	HEX	Flat	S-T10F12-32H-K	\$202.88	CN-TG100-K	WR-TG100-K
	1.250	6.00	9.3	2.44	1.41	HEX	Round	S-T10R12-60H-K	\$225.00	CN-TG100-K	WR-TG100-K
	1.500	3.37	6.61	2.44	1.41	HEX	Flat	S-T10F15-33H-G	\$261.20	CN-TG100-K	WR-TG100-K
	1.500	3.37	6.61	2.44	1.41	HEX	Flat	S-T10F15-33H-K	\$208.96	CN-TG100-K	WR-TG100-K
	1.500	6.00	9.3	2.44	1.41	HEX	Round	S-T10R15-60H-K	\$235.00	CN-TG100-K	WR-TG100-K
	1.750	3.50	6.73	2.44	1.41	HEX	Flat	S-T10F17-35H-G	\$263.20	CN-TG100-K	WR-TG100-K
	1.750	3.50	6.73	2.44	1.41	HEX	Flat	S-T10F17-35H-K	\$210.56	CN-TG100-K	WR-TG100-K
	1.750	6.00	8.2	2.44	1.41	HEX	Round	S-T10R17-60H-K	\$245.00	CN-TG100-K	WR-TG100-K
	2.000	4.00	7.24	2.44	1.41	HEX	Flat	S-T10F20-40H-G	\$270.40	CN-TG100-K	WR-TG100-K
2.000	4.00	7.24	2.44	1.41	HEX	Flat	S-T10F20-40H-K	\$216.32	CN-TG100-K	WR-TG100-K	
2.000	6.00	8.2	2.44	1.41	HEX	Round	S-T10R20-60H-K	\$255.00	CN-TG100-K	WR-TG100-K	
TG 150	1.750	8.00	11.7	-	-	HEX	Round	S-T15R17-80H-K	\$270.00	CN-TG150-K	WR-TG150-K
	2.000	8.00	11.7	-	-	HEX	Round	S-T15R20-80H-K	\$270.00	CN-TG150-K	WR-TG150-K

## DA STRAIGHT SHANK HOLDERS

### DA Series Collet Extensions



Collet Series	Shank D	C	OAL	Max Dia Thru Shank	Nut Dia	Length of Nut	Type of Nut	Shank Type	Part Number	Price Each	Nut Part Number	Wrench Hex Size
DA 100	1.000	3.00	4.00	9/16	1.06	0.90	HEX	Round	S-D10R10-30H-F	\$65.70	CN-DA10S10-F	7/8
	1.000	5.62	7.30	9/16	1.06	1.54	HEX	Round	S-D10R10-56H-F	\$65.70	CN-DA10E10-F	7/8
DA 180	1.000	5.00	6.20	3/4	1.56	0.87	HEX	Round	S-D18R10-50H-F	\$88.20	CN-DA18S18-F	1-3/8
	1.250	5.00	6.20	3/4	1.56	0.87	HEX	Round	S-D18R12-50H-F	\$81.90	CN-DA18S18-F	1-3/8
	1.500	5.00	6.20	3/4	1.56	0.87	HEX	Round	S-D18R15-50H-F	\$89.10	CN-DA18S18-F	1-3/8
	1.750	5.00	6.20	3/4	1.56	0.87	HEX	Round	S-D18R17-50H-F	\$95.40	CN-DA18S18-F	1-3/8
DA 200	0.625	3.00	3.75	3/8	0.75	0.71	HEX	Round	S-D20R06-30H-F	\$54.90	CN-DA20S06-F	11/16
	0.750	3.00	3.80	3/8	0.81	0.71	HEX	Round	S-D20R07-30H-F	\$61.20	CN-DA20S07-F	3/4
	0.750	5.62	7.10	3/8	0.81	1.34	HEX	Round	S-D20R07-56H-F	\$61.20	CN-DA20E07-F	11/16
DA 300	0.500	2.75	3.60	1/4	0.56	0.70	HEX	Round	S-D30R05-27H-F	\$50.40	CN-DA30S05-F	1/2
	0.500	5.62	6.80	1/4	0.56	1.00	HEX	Round	S-D30R05-56H-F	\$50.40	CN-DA30E05-F	1/2
	0.625	3.20	3.75	1/4	0.56	0.70	HEX	Round	S-D30R06-32H-F	\$54.90	CN-DA30S05-F	1/2

Call Us Or Visit Our Website For Our Complete Selection!

# COLLET EXTENSIONS/STRAIGHT SHANK HOLDERS

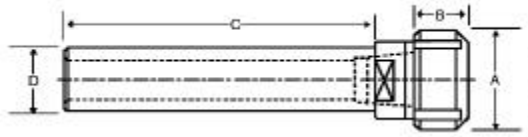
E



## AF STRAIGHT SHANK HOLDERS

### AF Series Collet Extensions

- Crafted from heat treated alloy steel
- Available with round or flatted shank
- Supplied with collet nut & backup screw



Collet Series	Shank D	C	Nut Dia	Length of Nut	Type of Nut	Shank Type	Part Number	Price Each	Thread Of Nut	Nut Part Number	Nut Industry Reference #
AF 25	0.500	4.00	0.73	0.54	HEX	Round	S-A25R05-40H-R	\$76.50	9/16-28	CN-AF25H	C9400022
	0.500	5.00	0.73	0.54	HEX	Round	S-A25R05-50H-R	\$89.00	9/16-28	CN-AF25H	C9400022
	0.500	5.50	0.73	0.54	HEX	Round	S-A25R05-55H-R	\$99.00	9/16-28	CN-AF25H	C9400022
	0.500	6.75	0.73	0.54	HEX	Round	S-A25R05-67H-R	\$115.00	9/16-28	CN-AF25H	C9400022
	0.625	4.00	0.73	0.54	HEX	Round	S-A25R06-40H-R	\$76.50	9/16-28	CN-AF25H	C9400022
AF 38	0.625	4.00	1.06	0.62	HEX	Round	S-A38R06-40H-R	\$76.50	13/16-12	CN-AF38H	C9400002
	0.750	4.00	1.06	0.62	HEX	Round	S-A38R07-40H-R	\$85.00	13/16-12	CN-AF38H	C9400002
	0.750	5.50	1.06	0.62	HEX	Round	S-A38R07-55H-R	\$99.00	13/16-12	CN-AF38H	C9400002
	0.750	7.00	1.06	0.62	HEX	Round	S-A38R07-70H-R	\$115.00	13/16-12	CN-AF38H	C9400002
AF 50	0.750	4.00	1.34	0.69	HEX	Round	S-A50R07-40H-R	\$80.00	1-12	CN-AF50H	C9400020
	0.750	6.00	1.34	0.69	HEX	Round	S-A50R07-60H-R	\$99.00	1-12	CN-AF50H	C9400020
	0.750	7.50	1.34	0.69	HEX	Round	S-A50R07-75H-R	\$115.00	1-12	CN-AF50H	C9400020
	1.000	4.00	1.34	0.69	HEX	Round	S-A50R10-40H-R	\$75.00	1-12	CN-AF50H	C9400020
AF 75	1.000	6.00	1.34	0.69	HEX	Round	S-A50R10-60H-R	\$85.00	1-12	CN-AF50H	C9400020
	1.000	4.50	1.96	1.06	HEX	Round	S-A75R10-45H-R	\$75.00	1-1/2-12	CN-AF75H	C900005
	1.000	7.50	1.96	1.06	HEX	Round	S-A75R10-75H-R	\$99.00	1-1/2-12	CN-AF75H	C900005
	1.250	5.50	1.96	1.06	HEX	Round	S-A75R12-55H-R	\$110.00	1-1/2-12	CN-AF75H	C900005
AF 100	1.250	8.00	1.96	1.06	HEX	Round	S-A75R12-80H-R	\$135.00	1-1/2-12	CN-AF75H	C900005
	1.250	5.00	2.48	1.19	HEX	Round	S-A10R12-50H-R	\$75.00	2-12	CN-AF100H	C940021
	1.500	6.50	2.48	1.19	HEX	Round	S-A10R15-65H-R	\$135.00	2-12	CN-AF100H	C940021
	1.500	9.75	2.48	1.19	HEX	Round	S-A10R15-97H-R	\$145.00	2-12	CN-AF100H	C940021

## DA, TG & AF COLLET NUTS & WRENCHES

Collet Series	Nut Dia		Nut Length		Threads	Part Number	Price Each	Ref #	Brand	Collet Wrench	
	mm	Inch	mm	Inch						Part Number	Price Each
TG75	55.4	2.18	23.1	.91	-	CN-TG075-K	\$30.00	-	Kingston	WR-TG075-K	\$26.00
TG100	63.0	2.48	32.8	1.29	-	CN-TG100-K	\$36.00	CN-108	Kingston	WR-TG100-K	\$26.00
TG150	82.6	3.25	44.5	1.75	-	CN-TG150-K	\$50.00	-	Kingston	WR-TG150-K	\$36.00

AF Series Collet Nuts & Wrenches											
AF25	-	0.73	-	0.54	9/16-28	CN-AF25H-K	\$20.00	CN-AF25	Kingston	-	-
AF38	-	1.06	-	0.62	13/16-12	CN-AF38H-K	\$22.00	CN-AF38	Kingston	-	-
AF50	-	1.34	-	0.69	1-12	CN-AF50H-K	\$25.00	CN-AF50	Kingston	-	-
AF75	-	1.96	-	1.06	1-1/2-12	CN-AF75H-K	\$41.00	CN-AF75	Kingston	-	-
AF100	-	2.48	-	1.19	2-12	CN-AF100H-K	\$57.00	-	Kingston	-	-

DA Series Collet Nuts & Wrenches											
DA100	-	1.06	-	0.90	-	CN-DA10S10-F	\$19.00	CN-106	Craftsman	-	-
	-	1.06	-	1.54	-	CN-DA10E10-F	\$19.00	CN-105	Craftsman	-	-
	-	1.06	-	1.5	15/16-20	CN-DA10ECN10-P	\$30.00	-	Parlec	WR-ECN10W-P	\$22.70
	-	1.39	-	.910	1-14	CN-DACN100-A	\$27.00	-	Briney	WR-DA10W-A	\$21.00
DA180	-	1.56	-	0.87	-	CN-DA18S18-F	\$19.00	CN-185	Craftsman	-	-
	-	1.44	-	1.6	1 1/4-16	CN-DA18ECN12-P	\$31.00	-	Parlec	WR-ECN12W-P	\$34.00
	-	1.7	-	.85	1 1/4-12	CN-DA18180CN-P	\$52.00	-	Parlec	WR-180CNW-P	\$42.00
DA200	-	1.7	-	.875	1 1/4-12	CN-DACN180-A	\$33.00	-	Briney	WR-DA18W-A	\$22.00
	-	0.75	-	0.71	-	CN-DA20S06-F	\$17.00	CN-213	Craftsman	-	-
	-	0.81	-	0.71	-	CN-DA20S07-F	\$17.00	CN-212	Craftsman	-	-
	-	.81	-	1.38	11/16-20	CN-DA20ECN75-P	\$28.00	-	Parlec	WR-ECN75W-P	\$18.60
	-	1.1	-	.88	3/4-16	CN-DA20CN20-P	\$28.00	-	Parlec	WR-ECN20W-P	\$23.70
DA300	-	1.125	-	.875	3/4-16	CN-DACN200-A	\$22.00	-	Briney	WR-DA20W-A	\$19.00
	-	0.81	-	1.34	-	CN-DA20E07-F	\$17.00	CN-211	Craftsman	-	-
	-	0.56	-	0.70	-	CN-DA30S05-F	\$14.00	CN-306	Craftsman	-	-
DA300	-	0.56	-	1.00	-	CN-DA30E05-F	\$14.00	CN-305	Craftsman	-	-
	-	.56	-	1.1	7/16-32	CN-DA30ECN50-P	\$24.80	-	Parlec	WR-ECN50W-P	\$15.50
	-	.62	-	1.1	1/2-28	CN-DA30CN30-P	\$24.80	-	Parlec	WR-ECN50W-P	\$15.50
	-	.860	-	.7	9/16-18	CN-DACN300-A	\$23.00	-	Briney	WR-DA30W-A	\$17.00



Call Us Today For All Of Your Machine Tool Needs!