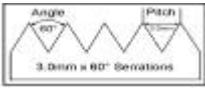
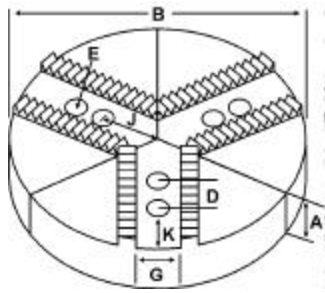


ROUND JAWS- 3.0 mm x 60° Serrations

For Use On: MMK Matsumoto, Howa & Other Chucks



Group
K3



- Round Jaws allow for complete gripping of workpiece.
- Oversized jaws available.
- Ideal for thin-walled or irregular shaped workpieces.
- Can be machined to fit workpiece.
- Available in Aluminum, Cast Iron & Steel.
- Made in the USA.
- Max. length of serrations: 5.75"



WARNING!
Make sure that you are looking for jaws with 3.0mm x 60° serrations. Jaws using 1.5mm x 60° serrations can be found on pages 10-21.

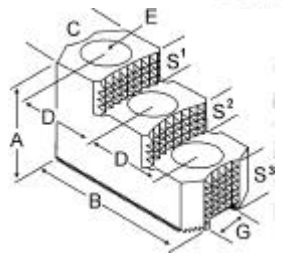
Group No.	Chuck Size	Critical Dimensions				ALUMINUM				CAST IRON		STEEL			
		Groove Width G	Screw Size E	Hole Space D	Hole to Front J	Part Number	Price Set Of 3	Part Number	Price Set Of 3	Part Number	Price Set Of 3				
K3-12-20	6	0.472 (12mm)	10mm	0.787 (20mm)	1.375	6	2.00	2	RH3-6200A	69.10	RH3-6200CI	89.60	RH3-6200S	161.92	
H-6,HA5-6							4.00	2	RH3-6400A	108.34	-	-	-	-	
K3-14-25	8	0.551 (14mm)	12mm	0.985 (25mm)	2.250	8	2.00	2	RH3-8200A	96.32	RH3-8200CI	115.20	RH3-8200S	235.52	
MMK HJ-08 HOWA HO1MA8							4.00	2	RH3-8400A	130.77	RH3-8400CI	217.59	-	-	
							10	2.00	2	10-RH3-8200A	136.45	-	-	-	-
							12	2.00	2	12-RH3-8200A*	177.32	-	-	-	-
K3-15-30	10	0.591 (15mm)	12mm	1.181 (30mm)	2.375	10	2.00	2	RH3-10204A	136.45	RH3-10204CI	172.80	-	-	
							4.00	2	RH3-10404A	210.47	-	-	-	-	
K3-16-30	10	0.630 (16mm)	12mm	1.181 (30mm)	2.375	10	2.00	2	RH3-10200A	120.78	RH3-10200CI	172.80	RH3-10200S	338.55	
MMK HW-10, HW-12							4.00	2	RH3-10400A	187.42	-	-	-	-	
							5.00	2	RH3-10500A*	280.05	-	-	-	-	
							2.50	2	12-RH3-10250A*	220.64	-	-	-	-	
HOWA HO1MA10							4.00	2	12-RH3-10400A*	351.92	-	-	-	-	
							2.50	2	15-RH3-10250A*	392.31	-	-	-	-	
ATLAS PAF10, PAF12	4.00	2	15-RH3-10400A*	481.98	-	-	-	-							
21	2.50	2	21-RH3-10250A*	719.47	-	-	-	-							
K3-18-30	12	0.709 (18mm)	14mm	1.181 (30mm)	3.625	12	2.00	2	RH3-12200A	177.32	RH3-12200CI	255.99	-	-	
HOWA HO1MA12							2.50	2	RH3-12250A	220.64	-	-	-	-	
							3.00	2	RH3-12300A	247.46	-	-	-	-	
							4.00	2	RH3-12400A	306.48	-	-	-	-	
							5.00	2	RH3-12500A	392.41	-	-	-	-	
15	2.50	2	15-RH3-12250A*	392.31	-	-	-	-							

Round Jaw Material: ALUMINUM-6061-T6 Bar Stock, CAST IRON-Gray, STEEL-1018. 18" & Larger- Aluminum Casting T6
For complete list of applicable chucks, see pages 60-72. * denotes non-stock item. Please allow 1 week manufacturing time.

HARD JAWS-2 STEP 3.0mm X 60° SERRATIONS



- FEATURES:**
- Designed for first operation roughing, expect standard runout between 0.005-0.010
 - Reversible-suitable for OD & ID workholding.
 - XTRA BITE -very aggressive bite. Has conical teeth for extra gripping power and ground body to provide improved runout.
 - GRIP-RITE-OEM Style hard jaws have ground tips and provide better runout.
 - DURAJAW have conical teeth for extra gripping power and black oxide for long life. Made in the USA.
 - 1 & 2 step jaws available.

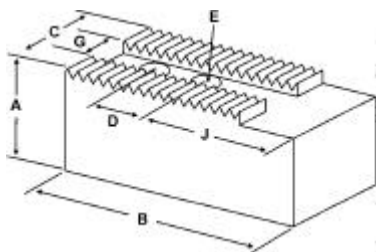


Group Number	Chuck Size	Critical Dimensions				Width Inch C	OAL Inch B	Height Inch A	No. of Holes	No. of Steps	Top Step Ht S1	Mid Step Ht S2	Bot Step Ht S3	Part Number	Price Per Set
		Groove Width G	Screw Size E	Hole Space D	Hole to Front J										
K3-16-30	10	0.630 (16mm)	12mm	1.181 (30mm)	1.750	4.250	2.500	3	2	0.650	0.650	1.200	H3-100HJ2-X	\$617.50	
K3-18-30	12	0.710 (18mm)	14mm	1.181 (30mm)	1.750	4.875	2.469	3	2	0.650	0.650	1.169	H3-120HJ2-X	\$665.00	
	15-20	1.023 (26mm)	20mm	1.969 (50mm)	2.500	6.500	3.469	3	2	0.950	0.950	1.569	H3-150HJ2-X	\$791.67	

Call Us Today For All Of Your Machine Tool Needs!

SOFT JAWS- 3.0 mm x 60° Serrations

For Use On: MMK Matsumoto, Howa & Other Chucks



WARNING!
Make sure that you are looking for jaws with **3.0mm x 60°** serrations. Jaws using **1.5mm x 60°** serrations can be found on pages **10-21**.



QUANTITY DISCOUNTS!
Order **5 SETS OR MORE** of the same part number soft jaws and receive a **5% DISCOUNT!**

Group No.	Chuck Size	Critical Dimensions			Hole to Front J	Width Inch C	Length Inch B	Hght Inch A	No. of Holes	ALUMINUM		STEEL	
		Groove Width G	Screw Size E	Hole Space D						FLAT END Part Number	Price Set Of 3	FLAT END Part Number	Price Set Of 3
K3-12-20	6	0.472 (12mm)	10mm	0.787 (20mm)	1.375	1.250	2.750	1.50	2	H3-6150AF	37.74	H3-6150F	40.58
H-6,HA5-6 HO1MA6								2.50	2	H3-6250AF	52.08	H3-6250F	55.88
K3-14-25	8	0.551 (14mm)	12mm	0.985 (25mm)	2.000	1.500	3.750	2.00	2	H3-8200AF	50.14	H3-8200F	53.58
HJ-08 HO1MA8								4.00	2	H3-8400AF	66.41	H3-8400F	70.41
K3-15-30	10 to 12	0.591 (15mm)	12mm	1.181 (30mm)	2.625	1.500	4.750	2.00	2	H3-10204AF	54.57	H3-10204F	58.18
								4.00	2	H3-10404AF	72.46	H3-10404F	76.56
K3-16-30	10 to 12	0.630 (16mm)	12mm	1.181 (30mm)	2.625	1.500	4.750	2.00	2	H3-10200AF	54.57	H3-10200F	58.18
HW-10,HW-12 HO1MA10								4.00	2	H3-10400AF	72.46	H3-10400F	76.56
K3-18-30	10 to 14	0.709 (18mm)	14mm	1.181 (30mm)	3.125	2.000	5.500	2.50	2	H3-12250AF	72.39	H3-12250F	76.56
HO1MA12								4.00	2	H3-12400AF	94.67	H3-12400F	99.51

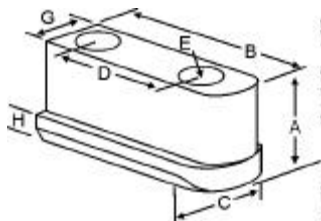
For "Pointed" Soft Jaws, please substitute "P" for "F" in the part number. Example: H3-6150AF will be H3-6150AP

For Pointed Jaws: Up to 10" add \$3.25. 12" and over add \$6.50

Soft Jaw Material: ALUMINUM-6061-T6 Bar Stock, STEEL-1018, "B" JAWS-7075-T6 Aircraft Aluminum

For complete list of applicable chucks, see pages 60-72. * denotes non-stock item. Please allow 1 week manufacturing time.

JAW NUTS & SCREWS



FREE SCREWS!
2 High Grade Socket Head Cap Screws Provided With Each Jaw Nut!



MMK Matsumoto	Howa	Critical Dimensions							2 Screws Included With Each Jaw Nut			
		Heel Height H	Groove Width G	Screw Size E	Hole Space D	Hght Inch A	Width Inch C	Length Inch B	Jaw Nut Part Number	Price Each	Screw Part Number	Price Each
HO15M6,HO1MA6,HO22M6, HO24M6,HO27M6,HO34M6	HJ-06	0.295	0.472 (12mm)	M10-1.60 x 30mm	0.787 (20mm)	0.847	0.669	1.460	H3-60JN	26.50	M1016030	1.50
-	-	0.340	0.628 (16mm)	M12-1.75 x 35mm	1.181 (30mm)	1.000	0.910	2.000	H3-100JN	51.54	M1217535	1.50

POWER CHUCK LUBRICANT



FEATURES:

- Double to Triple Clamping Pressure.
- Keeps Work Piece Clamped in Place.
- Provides Boundary Lubrication Protection.
- Lowers Friction and Wear.
- Assists in Wear-In of New Chucks
- Lowers Maintenance Costs.
- High Resistance to Centrifuge Force.

Quantity Discounts	
Each	List
12-23	Save 10%
24-35	Save 12%
36 +	Save 15%

REMINDER!
For optimum performance, it is recommended that you grease your chuck *once per shift*.



Container Size	Case Qty	Part Number	Price Each
4 Oz Cartridge	24	EZ-21471	\$5.33
4 Oz Cartridge w/ grease	each	EZ-OKIT-21471	\$30.88
16 Oz Cartridge	12	EZ-21478	\$16.89
10 Lb Pail	each	EZ-21444	\$138.47
40 Lb Pail	each	EZ-21445	\$528.54
135 Lb Keg	each	EZ-21446	\$1741.75
450 Lb Drum	each	EZ-21448	\$5550.48

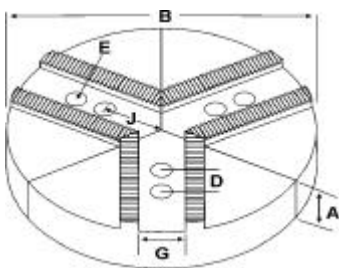
Call Us Or Visit Our Website For Our Complete Selection!

ROUND JAWS- 3.0 mm x 60° Serrations

For Use On: MMK Matsumoto, Howa & Other Chucks



Group



- Round Jaws allow for complete gripping of workpiece.
- Oversized jaws available.
- Ideal for thin-walled or irregular shaped workpieces.
- Can be machined to fit workpiece.
- Available in Aluminum, Cast Iron & Steel.
- Made in the USA.
- Max. length of serrations: 5.75"



WARNING!

Make sure that you are looking for jaws with 3.0mm x 60° serrations. Jaws using 1.5mm x 60° serrations can be found on pages 10-21.

18" ROUND JAWS Now Available In Solid Aluminum!

For an additional \$50.00, any 18" round jaw can be upgraded to solid aluminum. Simply add an "E" to the end of the part number.
Ex: RK3-18250A becomes RK3-18250AE

Group No.	Chuck Size	Critical Dimensions			Hole to Front J	Pie Dia B	Hght Inch A	No. of Holes	ALUMINUM		CAST IRON	
		Groove Width G	Screw Size E	Hole Space D					Part Number	Price Set Of 3	Part Number	Price Set Of 3
K3-21-40	15	0.827 (21mm)	16mm	1.575 (40mm)	3.187	15	2.50	2	RH3-15258A	392.31	RH3-15258CI	447.98
HO15M15							4.00	2	RH3-15408A	481.98	-	-
K3-22-50	15 - 18	0.866 (22mm)	20mm	1.969 (50mm)	3.750	15	2.50	2	RM3-15250A	392.31	RM3-15250CI	447.98
MMK HA11-15, HA11-18, HA8-15, HH11-15, HH-15, HH-18, ZA11-15, ZA15-18, ZA8-15							4.00	2	RM3-15400A	481.98	-	-
						6.00	2	RM3-15600A*	777.87	-	-	
						2.50	2	18-RM3-15250A	499.54	-	-	
						4.00	2	18-RM3-15400A	674.80	-	-	
						2.50	2	21-RM3-15250A	719.47	-	-	
						4.00	2	21-RM3-15400A	899.87	-	-	
						2.50	2	24-RM3-15250A	867.50	-	-	
						4.00	2	24-RM3-15400A*	1252.35	-	-	
K3-25-60						18 - 21	0.984 (25mm)	20mm	2.360 (60mm)	4.000	15	4.00
KITAGAWA B-21, B-24, B-530, B-600, HJ-450, HJ-530, HJ-610	18	2.50	2	RK3-18250A	499.84						-	-
	4.00	2	RK3-18400A	674.80	-						-	
	2.50	2	RK3-21250A	719.47	-						-	
	4.00	2	RK3-21400A	899.87	-						-	
	2.50	2	24-RK3-21250A	867.50	-						-	
K3-25-80	24	0.984 (25mm)	20mm	3.150 (80mm)	3.850	24	2.50	2	RK3-24250A	867.50	-	-
UVE-750AR							4.00	2	RK3-24400A	1252.35	-	-
K3-26-42	15	1.023 (26mm)	20mm	1.656 (42mm)	3.437	15	2.50	2	RH3-15254A	392.31	RH3-15254CI	447.98
HO27M15							4.00	2	RH3-15404A	481.98	-	-
K3-26-50	18 - 20	1.023 (26mm)	20mm	1.969 (50mm)	3.437	15	2.50	2	RH3-15250A	392.31	RH3-15250CI	447.98
HO1MA15							4.00	2	RH3-15400A	481.98	-	-
						24	2.50	2	24-RH3-15250A*	867.50	-	-

Round Jaw Material: ALUMINUM-6061-T6 Bar Stock, CAST IRON-Gray, STEEL-1018. 18" & Larger- Aluminum Casting T6

For complete list of applicable chucks, see pages 60-72..

* denotes non-stock item. Please allow 1 week manufacturing time.

HARD JAWS-2 STEP 3.0mm X 60° SERRATIONS



XTRA BITE (-X)



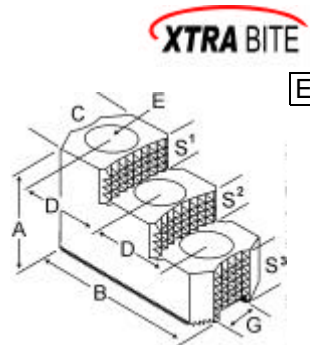
GRIP-RITE (-U)



DURAJAW

FEATURES:

- Designed for first operation roughing, expect standard runout between 0.005-0.010
- Reversible-suitable for OD & ID workholding.
- XTRA BITE -very aggressive bite. Has conical teeth for extra gripping power and ground body to provide improved runout.
- GRIP-RITE-OEM Style hard jaws have ground tips and provide better runout.
- DURAJAW have conical teeth for extra gripping power and black oxide for long life. Made in the USA.
- 1 & 2 step jaws available.



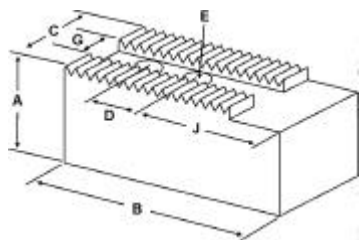
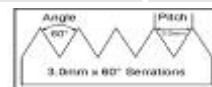
Group Number	Chuck Size	Critical Dimensions			Width Inch C	OAL Inch B	Height Inch A	No. of Holes	No. of Steps	Top Step Ht S1	Mid Step Ht S2	Bot Step Ht S3	Part Number	Price Per Set
		Groove Width G	Screw Size E	Hole Space D										
K3-22-50	15	0.866 (22mm)	20mm	1.969 (50mm)	2.500	6.500	3.469	3	2	0.950	0.950	1.569	M3-150HJ2-X	\$791.67
K3-25-49	18-24	0.984 (25mm)	20mm	1.907 (48.5mm)	2.500	6.500	3.469	3	2	0.950	0.950	1.569	K3-240HJ2-X	\$791.67

Call Us Today For All Of Your Machine Tool Needs!

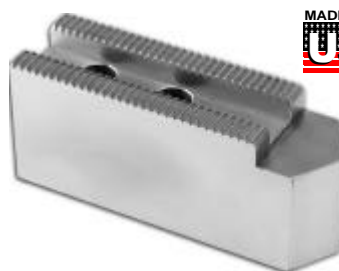
SOFT JAWS- 3.0 mm x 60° Serrations

C

For Use On: MMK Matsumoto, Howa & Other Chucks



WARNING!
Make sure that you are looking for jaws with 3.0mm x 60° serrations. Jaws using 1.5mm x 60° serrations can be found on pages 10-21.



MADE IN THE USA

Group
K3

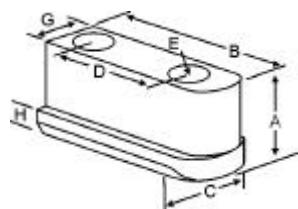
QUANTITY DISCOUNTS!
Order **5 SETS OR MORE** of the same part number soft jaws and receive a **5% DISCOUNT!**

Group No.	Chuck Size	Critical Dimensions				ALUMINUM					STEEL		
		Groove Width G	Screw Size E	Hole Space D	Hole to Front J	Width Inch C	Length Inch B	Hght Inch A	No. of Holes	FLAT END Part Number	Price Set Of 3	FLAT END Part Number	Price Set Of 3
K3-21-40	15	0.827 (21mm)	16mm	1.575 (40mm)	3.187	2.000	6.000	2.50	2	H3-15258AF	93.73	H3-15258F	99.51
4.00								2	H3-15408AF*	117.05	H3-15408F*	122.46	
4.50								2	H3-15458AF	116.09	H3-15458F	122.46	
K3-22-50	15 - 18	0.866 (22mm)	20mm	1.969 (50mm)	3.187	2.500	6.250	2.50	2	M3-15250AF	104.20	M3-15250F	110.23
3.00								2	M3-15300AF	108.95	M3-15300F	114.82	
4.00								2	M3-15400AF	131.17	M3-15400F	137.78	
5.00								2	M3-15500AF	208.71	M3-15500F	220.84	
6.00								2	M3-15600AF	264.29	M3-15600F	255.85	
K3-25-51	18 - 21	0.984 (25mm)	20mm	2.000 (51mm)	5.430	2.50	8.500	4.00	2	K3-21403AF*	156.03	K3-21403F*	169.28
K3-25-60	18 - 21	0.984 (25mm)	20mm	2.360 (60mm)	3.070	2.500	7.000	2.50	2	K3-21250AF	114.17	K3-21250F	120.72
4.00								2	K3-21400AF	137.64	K3-21400F	144.26	
6.00								2	K3-21600AF	283.68	K3-21600F	250.24	
K3-25-80	24	0.984 (25mm)	20mm	3.150 (80mm)	3.850	3.000	8.500	2.50	2	K3-24250AF	221.34	K3-24250F	235.52
UVE-800LB								4.00	2	K3-24400AF	291.73	K3-24400F	309.11
K3-26-42	15	1.023 (26mm)	20mm	1.656 (42mm)	2.687	2.000	5.750	2.50	2	H3-15254AF	79.53	H3-15254F	84.19
HO27M15								4.00	2	H3-15404AF	101.86	H3-15404F	107.17
K3-26-50	18 - 20	1.023 (26mm)	20mm	1.969 (50mm)	3.187	2.500	6.250	2.50	2	H3-15250AF	104.20	H3-15250F	110.23
HO1MA15								4.00	2	H3-15400AF	131.17	H3-15400F	137.78
								5.00	2	H3-15500AF	181.57	H3-15500F	191.36

For "Pointed" Soft Jaws, please substitute "P" for "F" in the part number. Example: H3-15258AF will be H3-15258AP. Pointed Jaws Add \$6.50.
Soft Jaw Material: ALUMINUM-6061-T6 Bar Stock, STEEL-1018, "B" JAWS-7075-T6 Aircraft Aluminum
For complete list of applicable chucks, see pages 60-72. * denotes non-stock item. Please allow 1 week manufacturing time.

JAW NUTS & SCREWS

MADE IN THE USA



Chuck Size	Kitagawa	MMK Matsumoto	Critical Dimensions						2 Screws Included With Each Jaw Nut				
			Heel Height H	Groove Width G	Screw Size E	Hole Space D	Hght Inch A	Width Inch C	Length Inch B	Jaw Nut Part Number	Price Each	Screw Part Number	Price Each
15	-	HO15M15, HO7MA15	0.413	0.826 (21mm)	M16-2.00 x 40mm	1.575 (40mm)	1.141	1.000	2.560	H3-158JN	39.75	M1620040	1.50
18 - 24	B-21, B-24, B-306	-	0.748	0.984 (25mm)	M20-2.50 x 50mm	2.362 (60mm)	1.772	1.476	3.543	KT-240JN	53.28	M2025050	2.50
21-24	-	-	0.748	0.984 (25mm)	M20-2.50 x 50mm	T-Nut	1.772	1.476	1.811	KT-210JN	43.46	M2025050	2.50
15	-	HO27M15	0.669	1.022 (26mm)	M20-2.50 x 50mm	1.654 (42mm)	1.570	1.339	2.750	H3-154JN	39.75	M2025050	2.50
18 - 20	-	-	0.669	1.022 (26mm)	M20-2.50 x 50mm	1.968 (50mm)	1.575	1.339	3.250	H3-150JN	56.30	M2025050	2.50

Call Us Or Visit Our Website For Our Complete Selection!

2007-08 Product Catalog