

# BROACHES

## KEYWAY BROACH SETS

### HIGH SPEED STEEL

Broach sets come in a durable plastic case (Dura-Case) and include broaches, bushings, shims, lubrication and operation guides.



No. Of Combos	Type	Description	Dura Case	
			Part Number	Price Each
15	Standard Precision #1	<b>3 Broaches:</b> 1/16-1, 3/32-1, 1/8-1 <b>5 Bushings:</b> 1/4-1, 5/16-1, 3/8-1, 7/16-1, 1/2-1	HS-15315	\$134.26
18	Standard Set C-1	<b>4 Broaches:</b> 1/8-II, 3/16-II, 1/4-III, 3/8-III <b>9 Bushings:</b> 1/2-II, 5/8-II, 3/4-II, 7/8-II, 1-III, 1-1/8-III, 1-1/4-III, 1-3/8-III, 1-1/2-III	HS-15318	\$232.26
18	Standard Set C-1A	<b>4 Broaches:</b> 1/8-II, 3/16-II, 1/4-III, 3/8-III <b>9 Bushings:</b> 9/16-II, 11/16-II, 13/16-II, 15/16-III, 1-1/16-III, 1-3/16-III, 1-5/16-III, 1-7/16-III, 1-9/16-III	HS-15319	\$232.26
15	Standard Set C-2	<b>3 Broaches:</b> 1/8-II, 3/16-III, 1/4-III <b>9 Bushings:</b> 9/16-II, 11/16-II, 13/16-II, 15/16-III, 1-1/16-III, 1-3/16-III, 1-5/16-III, 1-7/16-III, 1-9/16-III	HS-15320	\$198.94
14	Standard Set C-2A	<b>3 Broaches:</b> 1/8-II, 3/16-III, 1/4-III <b>9 Bushings:</b> 1/2-II, 5/8-II, 3/4-II, 7/8-II, 1-III, 1-1/8-III, 1-1/4-III, 1-3/8-III, 1-1/2-III	HS-15321	\$198.94
30	Standard Set C-10A	<b>3 Broaches:</b> 1/8-II, 3/16-III, 1/4-III <b>18 Bushings:</b> 1/2-II, 9/16-II, 5/8-II, 11/16-II, 3/4-II, 13/16-II, 7/8-II, 15/16-III, 1-III, 1-1/16-III, 1-1/8-III, 1-3/16-III, 1-1/4-III, 1-5/16-III, 1-3/8-III, 1-7/16-III, 1-1/2-III, 1-9/16-III	HS-15330	\$284.20
36	Standard Set C-10	<b>4 Broaches:</b> 1/8-II, 3/16-II, 1/4-III, 3/8-III <b>18 Bushings:</b> 1/2-II, 9/16-II, 5/8-II, 11/16-II, 3/4-II, 13/16-II, 7/8-II, 15/16-III, 1-III, 1-1/16-III, 1-1/8-III, 1-3/16-III, 1-1/4-III, 1-5/16-III, 1-3/8-III, 1-7/16-III, 1-1/2-III, 1-9/16-III	HS-15336	\$303.80

## KEYWAY BROACHES WITH SHIMS

### HIGH SPEED STEEL-AMERICAN STANDARD



Used to cut keyways in machined round holes. Designed to be used with an arbor press or manually, it is suited for use in a variety of non-ferrous and ferrous materials.

#### FEATURES:

- Tapered broach allows teeth to cut key way to proper depth
- Manufactured from high speed steel
- Ground and hardened bar with cutting teeth on the edges
- Replacement shims also available

Broach Size/Type	Keyway Width Tolerance	Dimensions	No. Of Shims	Part Number	Price Each
1/16 -I	.0625-.0635	1/8 X 5 1/4	0	HS-10104	\$36.46
3/32 -I	.0937-.0947	1/8 X 5 1/4	0	HS-10106	\$36.46
1/8 -I	.1252-.1262	1/8 X 5 1/4	1	HS-10108	\$36.46
3/32 -II	.0937-.0947	3/16 X 7	0	HS-10206	\$42.53
1/8 -II	.1252-.1262	3/16 X 7	1	HS-10208	\$42.53
5/32 -II	.1564-.1574	3/16 X 7	1	HS-10210	\$42.53
3/16 -II	.1877-.1887	3/16 X 7	1	HS-10212	\$42.53
3/16 -III	.1877-.1887	3/8 X 11 7/8	1	HS-10312	\$53.41
1/4 -III	.2502-.2512	3/8 X 11 7/8	1	HS-10316	\$53.41
5/16 -III	.3127-.3137	3/8 X 11 7/8	1	HS-10320	\$53.41
3/8 -III	.3755-.3765	3/8 X 11 7/8	2	HS-10324	\$53.41

Broach Size/Type	Keyway Width Tolerance	Dimensions	No. Of Shims	Part Number	Price Each
5/16 -IV	.3127-.3137	9/16 X 13 7/8	1	HS-10420	\$77.03
3/8 -IV	.3755-.3765	9/16 X 13 7/8	2	HS-10424	\$77.03
7/16 -IV	.4380-.4390	9/16 X 13 7/8	2	HS-10428	\$77.03
1/2 -IV	.5006-.5016	9/16 X 13 7/8	3	HS-10432	\$77.03
9/16 -IV	.5630-.5640	9/16 X 13 7/8	3	HS-10436	\$187.43
5/8 -V	.6260-.6270	3/4 X 15 1/4	4	HS-10540	\$130.73
3/4 -V	.7517-.7525	3/4 X 15 1/4	5	HS-10548	\$130.73
7/8 -VI	.8765-.8775	1 X 19 1/4	6	HS-10656	\$229.81
1" -VI	1.0015-1.0025	1 X 19 1/4	7	HS-10664	\$229.81
1 1/8	1.1260-1.1270	1 1/8 X 23	8	HS-10666	\$658.56
1 1/4	1.2510-1.2520	1 1/4 X 23	9	HS-10668	\$738.92

## ONE PASS KEYWAY BROACHES

### HIGH SPEED STEEL-AMERICAN STANDARD



Used to cut keyways in machined round holes in a single pass. Designed to be used with an arbor press or manually, it is suited for use in a variety of non-ferrous and ferrous materials.

#### FEATURES:

- Tapered broach allows teeth to cut key way to proper depth
- Manufactured from high speed steel
- Ground and hardened bar with cutting teeth on the edges
- Replacement shims also available
- Also available in metric sizes

Broach Size/Type	Keyway Width Tolerance	Dimensions Inches	Min. Length of Cut	Max. Length of Cut	Part Number	Price Each
1/8 II	.1252-.1262	3/16 X 10 3/4	1/4	1 1/2	HS-10208COP	\$142.10
5/32 II	.1564-.1574	3/16 X 10 3/4	1/4	1 1/2	HS-10210COP	\$142.10
3/16 II	.1877-.1887	3/16 X 10 3/4	1/4	1 1/2	HS-10212OP	\$142.10
3/16 III	.1877-.1887	3/8 X 18 1/2	5/16	1 11/16	HS-10312COP	\$171.50
1/4 III	.2502-.2512	3/8 X 18 1/2	5/16	1 11/16	HS-10316COP	\$171.50
5/16 III	.3127-.3137	3/8 X 18 1/2	5/16	1 11/16	HS-10320COP	\$171.50
3/8 III	.3755-.3765	3/8 X 18 1/2	5/16	1 11/16	HS-10324OP	\$171.50

## EXTRA SHIMS

### FOR STANDARD KEYWAY BROACHES

#### HIGH SPEED STEEL-AMERICAN STANDARD

Shims are designed to be placed between the bushing and the broach to allow the broach to cut deeper slots in the hole in succeeding passes.



Broach Size/Type	Thick.	Length x Width	Part Number	Price Each
1/8 I	.031	1 3/8 X 1/8	HS-30108	\$2.11
1/8 II	.031	1 7/8 X 3/16	HS-30208	\$2.11
5/32 II	.042	1 7/8 X 3/16	HS-30210	\$2.11
3/16 II	.050	1 7/8 X 3/16	HS-30212	\$2.11
3/16 III	.050	2 7/8 X 3/8	HS-30312	\$2.11
1/4 III	.062	2 7/8 X 3/8	HS-30316	\$2.11
5/16 III	.078	2 7/8 X 3/8	HS-30320	\$2.11
3/8 III	.062	2 7/8 X 3/8	HS-30324	\$2.11
5/16 IV	.078	6 1/4 X 9/16	HS-30420	\$2.79
3/8 IV	.062	6 1/4 X 9/16	HS-30424	\$2.79

Broach Size/Type	Thick.	Length x Width	Part Number	Price Each
7/16 IV	.075	6 1/4 X 9/16	HS-30428	\$2.79
1/2 IV	.062	6 1/4 X 9/16	HS-30432	\$2.79
5/8 V	.062	6 3/4 X 3/4	HS-30540	\$2.79
3/4 V	.062	6 3/4 X 3/4	HS-30548	\$2.79
7/8 VI	.062	6 3/4 X 1	HS-30656	\$2.79
1" VI	.062	6 3/4 X 1	HS-30664	\$2.79
1.125	.062	7 X 1 1/8	HS-30740	\$4.70
1.25	.062	7 X 1 1/4	HS-30750	\$4.70
1.375	.062	7 X 1 1/4	HS-30760	\$4.70
1.5	.062	7 X 1 1/4	HS-30770	\$4.70

Call Us Or Visit Our Website For Our Complete Selection!

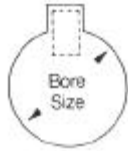


# BROACHES

## KEYWAY BUSHINGS KNURLED COLLAR & PLAIN TYPE

Designed for use with standard keyway broaches for cutting keyways in machined holes. Keyway bushings act as a guide to guide the keyway broach through the hole.

**Plain Type:** Used with Type IV & V broaches  
**Knurled Collar Type:** Designed for use with Type I, II & III broaches



Plain Type Bushing



Collard Bushing

### I Collared Bushings for I Broaches

Dia/Type	Length	Part Number	Price Each
1/4 I	1 1/8	HS-20116	\$8.33
5/16 I	1 1/8	HS-20120	\$8.33
3/8 I	1 1/8	HS-20124	\$8.33
7/16 I	1 1/8	HS-20128	\$8.33
1/2 I	1 1/8	HS-20132	\$8.33

### II Collared Bushings for II Broaches

Dia/Type	Length	Part Number	Price Each
1/2 II	1 11/16	HS-20232	\$7.35
9/16 II	1 11/16	HS-20236	\$7.35
5/8 II	1 11/16	HS-20240	\$7.35

11/16 II	1 11/16	HS-20244	\$7.35
3/4 II	1 11/16	HS-20248	\$7.35
13/16 II	1 11/16	HS-20252	\$7.35
7/8 II	1 11/16	HS-20256	\$7.35

### III Collared Bushings for III Broaches

Dia/Type	Length	Part Number	Price Each
3/4 III	2 1/2	HS-20348	\$9.80
13/16 III	2 1/2	HS-20352	\$9.80
7/8 III	2 1/2	HS-20356	\$9.80
15/16 III	2 1/2	HS-20360	\$9.80
1" III	2 1/2	HS-20364	\$9.80

### III Collared Bushings for III Broaches

Dia/Type	Length	Part Number	Price Each
1 1/16 III	2 1/2	HS-20368	\$9.80
1 1/8 III	2 1/2	HS-20372	\$9.80
1 3/16 III	2 1/2	HS-20376	\$11.27
1 1/4 III	2 1/2	HS-20380	\$11.27
1 5/16 III	2 1/2	HS-20384	\$11.27
1 3/8 III	2 1/2	HS-20388	\$11.27
1 7/16 III	2 1/2	HS-20392	\$11.27
1 1/2 III	2 1/2	HS-20396	\$11.27
1 9/16 III	2 1/2	HS-20400	\$11.27

### IV Plain Bushings for IV Broaches

Dia/Type	Length	Part Number	Price Each
1 7/16	4	HS-21492	\$11.76
1 1/2	4	HS-21496	\$11.76
1 9/16	4	HS-21500	\$11.76
1 5/8	4	HS-21504	\$11.76
1 11/16	4	HS-21508	\$16.17
1 3/4	4	HS-21512	\$16.17
1 13/16	5	HS-21516	\$16.17
1 7/8	5	HS-21520	\$16.17
1 15/16	5	HS-21524	\$17.89

### IV Plain Bushings for IV Broaches

Dia/Type	Length	Part Number	Price Each
2"	5	HS-21528	\$17.15
2 1/16	5	HS-21532	\$17.15
2 1/8	5	HS-21536	\$17.15
2 3/16	5	HS-21540	\$17.15
2 1/4	5	HS-21544	\$24.50
2 5/16	5	HS-21548	\$24.50
2 3/8	6	HS-21552	\$24.50
2 7/16	6	HS-21556	\$24.50
2 1/2	6	HS-21560	\$32.34
2 9/16	6	HS-21564	\$32.34
2 5/8	6	HS-21568	\$32.34
2 11/16	6	HS-21572	\$32.34
2 3/4	6	HS-21576	\$32.34
2 13/16	6	HS-21580	\$32.34
2 7/8	6	HS-21584	\$32.34
2 15/16	6	HS-21588	\$32.34
3	6	HS-21592	\$32.34

Additional Sizes Available.

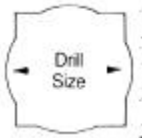
## STANDARD SQUARE PUSH BROACHES HIGH SPEED STEEL



Used to cut square shaped holes in machined round holes. Designed to allow broach to start in a plain round hole and cut a precisely shaped square hole in a single pass. Designed to be used with an arbor press or manually, it is suited for use in a variety of non-ferrous and ferrous materials.

### FEATURES:

- Each tooth is progressively larger and cuts slightly deeper than the previous tooth
- Manufactured from high speed steel
- Ground and hardened bar with cutting teeth on the edges
- Also available in metric sizes

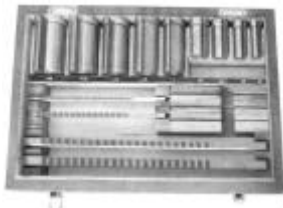


Size Square	Tolerance	Pilot Dia	Drill Size	Broach Length	Min LOC	Max LOC	Part Number	Price Each
1/8	.1250-.1260	.1280	#30	4 5/8	3/16	1/2	HS-13008	\$76.44
5/32	.1565-.1575	.1585	#21	5 5/8	1/4	1/2	HS-13010	\$86.24
3/16	.1880-.1890	.1930	#10	5 11/16	1/4	5/8	HS-13012	\$76.44
7/32	.2190-.2200	.2275	#1	6 7/8	1/4	3/4	HS-13014	\$86.24
1/4	.2505-.2515	.2651	17/64	7	1/4	3/4	HS-13016	\$76.44
9/32	.2815-.2825	.2964	19/64	7 1/4	3/8	1	HS-13018	\$96.04
5/16	.3130-.3140	.3276	21/64	8 1/8	3/8	1	HS-13020	\$78.40
11/32	.3440-.3450	.3589	23/64	9 5/8	3/8	1 1/4	HS-13022	\$124.46
3/8	.3755-.3765	.3901	25/64	9 7/8	3/8	1 1/4	HS-13024	\$99.96
13/32	.4065-.4075	.4214	27/64	10 7/8	1/2	1 3/8	HS-13026	\$147.98
7/16	.4385-.4395	.4526	29/64	11 3/8	1/2	1 3/8	HS-13028	\$127.40
15/32	.4690-.4700	.4995	1/2	12 1/2	1/2	1 3/8	HS-13030	\$194.04
1/2	.5005-.5015	.5307	17/32	12 5/8	1/2	1 3/8	HS-13032	\$147.00
9/16	.5630-.5640	.5932	19/32	14 7/8	1/2	1 1/2	HS-13036	\$186.20
5/8	.6260-.6270	.6557	21/32	16 13/16	5/8	1 5/8	HS-13040	\$218.54
11/16	.6885-.6895	.7495	3/4	18 1/2	5/8	1 5/8	HS-13044	\$253.82
3/4	.7510-.7520	.8120	13/16	18 7/8	5/8	1 5/8	HS-13048	\$294.98
7/8	.8765-.8775	.9370	15/16	22 3/4	1/2	2	HS-13056	\$425.32
1"	1.0020-1.0030	1.0932	1 3/32	24 1/2	1/2	2	HS-13064	\$441.98

## KEYWAY BROACH SETS Heavy Duty, High Speed Steel

**BEST VALUE**

- High speed steel
- Complete with wood case
- **30 piece set** includes 5 broaches, 18 collared bushings and 7 shims for 47 keyway combinations.
- **9 piece set** includes 3 broaches, 5 collared bushings and 1 shim for 15 keyway combinations.



No. Of Combos	Type	Description	Part Number	Price Each
15	Standard Style A	<b>3 Broaches:</b> 1/16-A, 3/32-A, 1/8-A <b>5 Bushings:</b> 1/4, 5/16, 3/8, 7/16, 1/2	A-2006-0051	\$95.00
47	Standard Style B/C	<b>5 Broaches:</b> 1/8-B, 3/16-B, 1/4-C, 5/16-C, 3/8-C <b>18 Bushings:</b> 1/2-B, 9/16-B, 5/8-B, 11/16-B, 3/4-B, 13/16-B, 7/8-B, 15/16-C, 1"-C, 1-1/16-C, 1-1/8-C, 1-3/16-C, 1-1/4-C, 1-5/16-C, 1-3/8-C, 1-7/16-C, 1-1/2-C, 1-9/16-C	A-2006-0056	\$199.00

Call Us Today For All Of Your Machine Tool Needs!

## STANDARD HEXAGON PUSH BROACHES HIGH SPEED STEEL



Used to cut hexagonal shaped holes in machined round holes. Designed to allow broach to start in a plain round hole and cut a precisely shaped hexagonal hole in a single pass. Designed to be used with an arbor press or manually, it is suited for use in a variety of non-ferrous and ferrous materials.

### FEATURES:

- Each tooth is progressively larger and cuts slightly deeper than the previous tooth
- Manufactured from high speed steel
- Ground and hardened bar with cutting teeth on the edges
- Also available in metric sizes

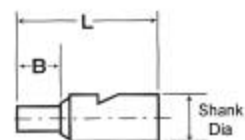


Hex Size	Tolerance	Pilot Dia	Drill Size	Broach Length	Min LOC	Max LOC	Part Number	Price Each
1/8	.1255-.1260	.1245	1/8	4 5/8	3/16	3/8	HS-12008	\$87.22
5/32	.1565-.1570	.1557	5/32	5 1/2	1/4	1/2	HS-12010	\$98.98
3/16	.1880-.1890	.1870	3/16	5 9/16	1/4	5/8	HS-12012	\$92.12
7/32	.2190-.2200	.2182	7/32	6	1/4	3/4	HS-12014	\$108.78
1/4	.2505-.2515	.2495	1/4	6 1/2	1/4	3/4	HS-12016	\$92.12
9/32	.2815-.2825	.2807	9/32	7 3/4	3/8	1	HS-12018	\$113.68
5/16	.3130-.3140	.3120	5/16	8 1/4	3/8	1	HS-12020	\$96.04
11/32	.3440-.3450	.3432	11/32	8 1/4	3/8	1 1/4	HS-12022	\$140.14
3/8	.3755-.3765	.3745	3/8	9	3/8	1 1/4	HS-12024	\$112.70
13/32	.4065-.4075	.4057	13/32	10	1/2	1 3/8	HS-12026	\$167.58
7/16	.4385-.4395	.4370	7/16	10 3/4	1/2	1 3/8	HS-12028	\$142.10
15/32	.4690-.4700	.4682	15/32	12 3/8	1/2	1 3/8	HS-12030	\$200.90
1/2	.5005-.5015	.4995	1/2	12 1/2	1/2	1 3/8	HS-12032	\$166.60
9/16	.5630-.5640	.5620	9/16	14 1/4	1/2	1 1/2	HS-12036	\$199.92
5/8	.6260-.6270	.6245	5/8	16 7/8	5/8	1 5/8	HS-12040	\$230.30
11/16	.6880-.6890	.6870	11/16	17	5/8	1 5/8	HS-12044	\$253.82
3/4	.7510-.7520	.7495	3/4	17 7/8	5/8	1 5/8	HS-12048	\$267.54
7/8	.8755-.8765	.8745	7/8	18 7/8	5/8	1 5/8	HS-12056	\$421.40
1"	1.0020-1.0030	.9995	1	19 7/8	5/8	1 5/8	HS-12064	\$441.49

## INTERNAL HEX & SQUARE BROACHES HIGH SPEED STEEL

### FEATURES:

- Also referred to as "wobble," "blind hole," "punch" and "rotary" broaches
- For use with screw machines, CNC turning machines and presses
- Also available in special forms- torx, octagons, splines- please call for more information



### SQUARE PUNCH BROACHES .315 SHANK

Shank Dia	Hex Size	DOC B	OAL L	Part Number	Price Each
.315	1/16	1/8	1-1/4	HS-68004	\$43.12
	3/32	9/64	1-1/4	HS-68006	\$43.12
	1/8	3/16	1-1/4	HS-68008	\$43.12
	5/32	1/4	1-1/4	HS-68010	\$43.12
	3/16	9/32	1-1/4	HS-68012	\$43.12
	7/32	11/32	1-1/4	HS-68014	\$43.12
	1/4	3/8	1-1/2	HS-68016	\$57.82
	9/32	3/8	1-1/2	HS-68018	\$57.82
	5/16	3/8	1-1/2	HS-68020	\$57.82
	11/32	3/8	1-1/2	HS-68022	\$57.82
3/8	3/8	1-1/2	HS-68024	\$61.74	

### SQUARE PUNCH BROACHES .500 SHANK

Shank Dia	Hex Size	DOC B	OAL L	Part Number	Price Each
.500	3/32	9/64	1-1/2	HS-68106	\$50.96
	1/8	3/16	1-1/2	HS-68108	\$50.96
	5/32	1/4	1-1/2	HS-68110	\$50.96
	3/16	9/32	1-1/2	HS-68112	\$50.96
	7/32	11/32	1-1/2	HS-68114	\$50.96
	1/4	3/8	1-1/2	HS-68116	\$50.96
	9/32	7/16	1-1/2	HS-68118	\$50.96
	5/16	1/2	1-1/2	HS-68120	\$50.96
	11/32	9/16	1-1/2	HS-68122	\$70.56
	3/8	5/8	2	HS-68124	\$70.56
7/16	5/8	2	HS-68128	\$70.56	
1/2	5/8	2	HS-68132	\$70.56	
9/16	3/4	2	HS-68136	\$74.48	
5/8	7/8	2	HS-68140	\$74.48	

### SQUARE PUNCH BROACHES .750 SHANK

Shank Dia	Hex Size	DOC B	OAL L	Part Number	Price Each
.750	1/2	5/8	2-1/2	HS-68532	\$111.72
	9/16	3/4	2-3/4	HS-68536	\$111.72
	5/8	3/4	2-3/4	HS-68540	\$115.64
	3/4	7/8	2-3/4	HS-68548	\$115.64

### HEXAGONAL PUNCH BROACHES .315 SHANK

Shank Dia	Hex Size	DOC B	OAL L	Part Number	Price Each
.315	.051	5/64	1-1/4	HS-66002	\$43.12
	1/16	3/32	1-1/4	HS-66004	\$43.12
	5/64	7/64	1-1/4	HS-66005	\$43.12
	3/32	9/64	1-1/4	HS-66006	\$43.12
	7/64	5/32	1-1/4	HS-66007	\$43.12
	1/8	3/16	1-1/4	HS-66008	\$43.12
	9/64	7/32	1-1/4	HS-66009	\$43.12
	5/32	1/4	1-1/4	HS-66010	\$43.12
	3/16	9/32	1-1/4	HS-66012	\$43.12
	7/32	11/32	1-1/4	HS-66014	\$43.12
	1/4	3/8	1-1/4	HS-66016	\$43.12
	9/32	3/8	1-1/2	HS-66018	\$56.84
	5/16	3/8	1-1/2	HS-66020	\$56.84
	11/32	7/16	1-1/2	HS-66022	\$56.84
	3/8	1/2	1-1/2	HS-66024	\$56.84
	13/32	1/2	1-1/2	HS-66026	\$56.84
	7/16	1/2	1-1/2	HS-66028	\$56.84
	15/32	1/2	1-1/2	HS-66030	\$56.84
1/2	1/2	1-1/2	HS-66032	\$56.84	

### HEXAGONAL PUNCH BROACHES .500 SHANK

Shank Dia	Hex Size	DOC B	OAL L	Part Number	Price Each
.500	1/4	3/8	1-1/2	HS-66116	\$48.02
	9/32	7/16	1-1/2	HS-66118	\$48.02
	5/16	1/2	1-1/2	HS-66120	\$48.02
	11/32	9/16	1-1/2	HS-66122	\$48.02
	3/8	9/16	1-1/2	HS-66124	\$48.02
	13/32	5/8	2	HS-66126	\$67.62
	7/16	5/8	2	HS-66128	\$67.62
	15/32	5/8	2	HS-66130	\$67.62
	1/2	5/8	2	HS-66132	\$67.62
	17/32	5/8	2	HS-66134	\$67.62
	9/16	5/8	2	HS-66136	\$67.62
	19/32	5/8	2	HS-66138	\$70.56
	5/8	3/4	2	HS-66140	\$70.56
	21/32	3/4	2	HS-66142	\$72.52
	11/16	7/8	2	HS-66144	\$72.52
	23/32	7/8	2	HS-66146	\$74.48
	3/4	7/8	2	HS-66148	\$74.48

### HEXAGONAL PUNCH BROACHES .750 SHANK

Shank Dia	Hex Size	DOC B	OAL L	Part Number	Price Each
.750	3/8	1/2	2-1/2	HS-66524	\$63.70
	7/16	1/2	2-1/2	HS-66528	\$63.70
	1/2	1/2	2-1/2	HS-66532	\$92.12
	9/16	3/4	2-1/2	HS-66536	\$92.12
	5/8	3/4	2-1/2	HS-66540	\$92.12
	3/4	7/8	2-3/4	HS-66548	\$97.02
	7/8	7/8	2-3/4	HS-66556	\$97.02
	1	7/8	2-3/4	HS-66564	\$103.88

### HEXAGONAL PUNCH BROACHES .500 SHANK

Shank Dia	Hex Size	DOC B	OAL L	Part Number	Price Each
.500	3/32	9/64	1-1/2	HS-66106	\$48.02
	7/64	5/32	1-1/2	HS-66107	\$48.02
	1/8	3/16	1-1/2	HS-66108	\$48.02
	9/64	7/32	1-1/2	HS-66109	\$48.02
	5/32	1/4	1-1/2	HS-66110	\$48.02
	3/16	9/32	1-1/2	HS-66112	\$48.02
	7/32	9/32	1-1/2	HS-66114	\$48.02

Call Us Or Visit Our Website For Our Complete Selection!