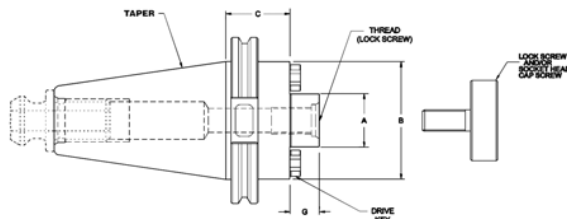


CAT-40 V-FLANGE SHELL MILL HOLDERS

SHELL MILL HOLDERS



Shell Mills are located on pages 347-353



A Pilot dia	B Dia	C Proj	G	Brand	Part Number	Price	Drive Key	Screw Thread	Lock Screw	Arbor Screw	Code
1/2" 0.500	1.75	1.38	-	Kingston	C40-50SM138-K	\$89.54	-	-	-	-	F
	1.75	1.38	-	Spin Tru	C40-50SM138-KB	\$93.60	-	-	-	-	D
	1.38	1.75	0.57	Lyndex	C40-50SM175-L	\$145.04	1/4"	1/4"-28	-	A1/4-28	B
	1.75	3.50	-	Kingston	C40-50SM350-K	\$99.76	-	-	-	-	F
	1.75	3.50	-	Spin Tru	C40-50SM350-KB	\$113.60	-	-	-	-	D
3/4" 0.750	1.69	1.50	0.68	Command	C40-75SM150-M	\$104.65	75KY	3/8"-24	-	028-192	B
	-	1.50	-	Kingston	C40-75SM150-K	\$89.76	-	-	-	-	F
	-	1.50	-	Spin Tru	C40-75SM150-KB	\$93.60	-	-	-	-	D
	1.75	1.50	0.68	Parlec	C40-75SM150-P	\$107.25	75KY	3/8"-24	-	028-192	B
	2.00	1.75	0.67	Lyndex	C40-75SM175-L	\$145.04	5/16"	3/8"-24	-	A3/8-24	B
	1.75	3.50	-	Kingston	C40-75SM350-K	\$99.76	-	-	-	-	F
	1.75	3.50	-	Spin Tru	C40-75SM350-KB	\$108.80	-	-	-	-	D
	-	4.00	-	Kingston	C40-75SM400-K	\$104.16	-	-	-	-	F
	-	4.00	-	Spin Tru	C40-75SM400-KB	\$108.80	-	-	-	-	D
	1.75	4.00	0.68	Parlec	C40-75SM400-P	\$130.50	75KY	3/8"-24	-	028-192	B
1.75	6.00	-	Kingston	C40-75SM600-K	\$121.76	-	-	-	-	F	
1" 1.000	-	1.15	-	Kingston	C40-10SM115-K	\$89.76	-	-	-	-	F
	-	1.15	-	Spin Tru	C40-10SM115-KB	\$93.60	-	-	-	-	D
	-	2.00	-	Kingston	C40-10SM200-K	\$89.76	-	-	-	-	F
	-	2.00	-	Spin Tru	C40-10SM200-KB	\$93.60	-	-	-	-	D
	2.25	2.00	0.68	Parlec	C40-10SM200-P	\$107.25	10KY	1/2"-20	10LS	028-188	B
	2.19	2.06	-	Command	C40-10SM206-M	\$104.65	10KY	1/2"-20	10LS	028-188	B
	2.19	4.00	-	Kingston	C40-10SM400-K	\$104.16	-	-	-	-	F
	2.19	4.00	-	Spin Tru	C40-10SM400-KB	\$108.80	-	-	-	-	D
	2.19	6.00	-	Kingston	C40-10SM600-K	\$143.55	-	-	-	-	F
	2.19	6.00	-	Spin Tru	C40-10SM600-KB	\$169.60	-	-	-	-	D
2.38	4.00	0.67	Lyndex	C40-10SM400-L	\$173.46	3/8"	1/2"-20	-	A1/2-20	B	
1-1/4" 1.250	2.75	1.62	0.68	Parlec	C40-12SM162-P	\$149.25	12KY	5/8"-18	-	028-193	B
	2.88	1.62	-	Spin Tru	C40-12SM162-KB	\$93.60	-	-	-	-	D
	2.88	2.00	0.67	Lyndex	C40-12SM200-L	\$145.04	1/2"	5/8"-18	-	A5/8-18	B
	2.88	2.12	-	Kingston	C40-12SM212-K	\$89.76	-	-	-	-	F
	2.75	2.25	0.68	Parlec	C40-12SM225-P	\$112.50	12KY	5/8"-18	12LS	028-193	B
	2.88	2.50	-	Kingston	C40-12SM250-K	\$90.60	-	-	-	-	F
	2.88	2.50	-	Spin Tru	C40-12SM250-KB	\$94.59	-	-	-	-	D
	2.75	2.63	-	Command	C40-12SM263-M	\$104.65	-	-	-	-	D
	2.75	4.00	0.68	Parlec	C40-12SM400-P	\$137.25	12KY	5/8"-18	12LS	028-193	B
	2.88	4.00	-	Kingston	C40-12SM400-K	\$104.16	-	-	-	-	F
2.88	4.00	-	Spin Tru	C40-12SM400-KB	\$108.80	-	-	-	-	D	
2.88	4.00	0.67	Lyndex	C40-12SM400-L	\$173.46	1/2"	5/8"-18	-	A5/8-18	B	
1-1/2" 1.500	3.75	2.40	0.94	Parlec	C40-15SM240-P	\$119.25	15KY	3/4"-16	15LS	15LS	B
	3.38	2.50	-	Kingston	C40-15SM250-K	\$90.60	-	-	-	-	F
	3.38	2.50	-	Spin Tru	C40-15SM250-KB	\$94.59	-	-	-	-	D
	3.81	3.00	-	Command	C40-15SM300-M	\$108.36	5/8"	3/4"-16	-	A3/4-16	B
	3.38	4.00	-	Kingston	C40-15SM400-K	\$107.46	-	-	-	-	F
	3.38	4.00	-	Spin Tru	C40-15SM400-KB	\$108.80	-	-	-	-	D
3.80	4.00	0.93	Lyndex	C40-15SM400-L	\$190.12	5/8"	3/4"-16	-	A3/4-16	B	

Call Us Or Visit Our Website For Our Complete Selection!

LATHE CHUCKS
LIVE CENTERS

VICE JAWS
VICE ACCESSORIES

STRAIGHT SHANK
COLLET HOLDERS

LATHE BUSHINGS
DRILL CHUCKS

CARBIDE INSERTS
THREADING/GROOVING

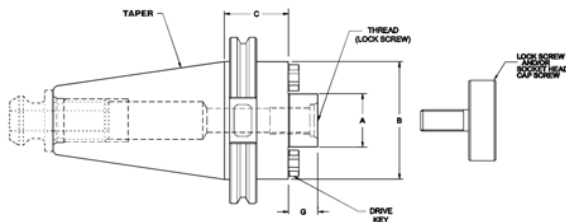
CUTTING TOOLS
MACHINERY

PRECISION TOOLS
DEBURRING

COOLANT/FLUIDS
TOOL STORAGE

CAT-50 V-FLANGE SHELL MILL HOLDERS

SHELL MILL HOLDERS



A Pilot dia	B Dia	C Proj	G	Brand	Part Number	Price	Drive Key	Screw Thread	Lock Screw	Arbor Screw	Code
1/2" 0.500	1.44	5.50	-	Kingston	C50-50SM550-K	\$143.76	-	-	-	-	F
	1.44	5.50	-	Spin Tru	C50-50SM550-KB	\$163.20	-	-	-	-	D
3/4" 0.750	1.75	1.50	-	Kingston	C50-75SM150-K	\$112.68	-	-	-	-	F
	1.75	1.50	-	Spin Tru	C50-75SM150-KB	\$128.00	-	-	-	-	D
	1.69	1.50	-	Command	C50-75SM150-M	\$123.20	75KY	3/8"-24	-	028-192	B
	2.00	1.75	0.67	Lyndex	C50-75SM175-L	\$165.62	5/16	3/8"-24	-	A3/8-24	B
	1.75	3.50	-	Kingston	C50-75SM350-K	\$121.94	-	-	-	-	F
	2.00	4.00	0.67	Lyndex	C50-75SM400-L	\$195.02	5/16	3/8"-24	-	A3/8-24	B
	1.75	5.50	-	Kingston	C50-75SM550-K	\$129.80	-	-	-	-	F
	1.75	5.50	-	Spin Tru	C50-75SM550-KB	\$143.60	-	-	-	-	D
2.00	8.00	0.67	Lyndex	C50-75SM800-L	\$293.02	5/16	3/8"-24	-	A3/8-24	B	
1" 1.000"	2.75	1.75	0.69	Lyndex	C50-10SM175-L	\$165.62	3/8"	1/2"-20	-	A1/2-20	B
	2.19	2.00	-	Command	C50-10SM200-M	\$123.20	10KY	1/2"-20	10LS	028-188	B
	2.75	2.00	-	Kingston	C50-10SM200-K	\$112.68	-	-	-	-	F
	2.75	2.00	-	Spin Tru	C50-10SM200-KB	\$117.60	-	-	-	-	D
	2.75	4.00	-	Kingston	C50-10SM400-K	\$123.70	-	-	-	-	F
	2.75	4.00	-	Spin Tru	C50-10SM400-KB	\$128.80	-	-	-	-	D
	2.75	4.00	0.69	Lyndex	C50-10SM400-L	\$195.02	3/8"	1/2"-20	-	A1/2-20	B
	2.75	6.00	-	Kingston	C50-10SM600-K	\$131.00	-	-	-	-	F
	2.75	6.00	-	Spin Tru	C50-10SM600-KB	\$132.80	-	-	-	-	D
	2.75	6.00	0.69	Lyndex	C50-10SM600-L	\$239.12	3/8"	1/2"-20	-	A1/2-20	B
1-1/4" 1.250	2.75	1.50	0.68	Parlec	C50-12SM150-P	\$140.25	12KY	5/8"-18	12LS	028-193	B
	2.88	1.50	-	Kingston	C50-12SM150-K	\$112.68	-	-	-	-	F
	2.88	1.50	-	Spin Tru	C50-12SM150-KB	\$120.00	-	-	-	-	D
	2.88	1.75	0.69	Lyndex	C50-12SM175-L	\$165.62	1/2"	5/8"-18	-	A5/8-18	B
	2.75	3.50	-	Command	C50-12SM350-M	\$150.64	12KY	5/8"-18	12LS	028-193	B
	2.88	3.50	-	Kingston	C50-12SM350-K	\$123.70	-	-	-	-	F
	2.88	3.50	-	Spin Tru	C50-12SM350-KB	\$132.00	-	-	-	-	D
	2.88	4.00	0.69	Lyndex	C50-12SM400-L	\$203.84	1/2"	5/8"-18	-	A5/8-18	B
	2.88	5.50	-	Kingston	C50-12SM550-K	\$143.55	-	-	-	-	F
	2.88	5.50	-	Spin Tru	C50-12SM550-KB	\$144.00	-	-	-	-	D
1-1/2" 1.500	3.80	2.00	0.93	Lyndex	C50-15SM200-L	\$170.52	5/8"	3/4"-16	-	A3/4-16	B
	3.81	2.40	-	Spin Tru	C50-15SM240-KB	\$131.20	-	-	-	-	D
	3.81	2.50	-	Command	C50-15SM250-M	\$127.68	15KY	3/4"-16	15LS	15LS	B
	3.38	2.75	-	Kingston	C50-15SM275-K	\$110.17	-	-	-	-	F
	3.80	4.00	0.93	Lyndex	C50-15SM400-L	\$190.12	5/8"	3/4"-16	-	A3/4-16	B
	3.81	4.00	-	Kingston	C50-15SM400-K	\$128.98	-	-	-	-	F
	3.81	4.00	-	Spin Tru	C50-15SM400-KB	\$144.00	-	-	-	-	D
	3.81	6.00	-	Kingston	C50-15SM600-K	\$145.00	-	-	-	-	F
	3.81	6.00	-	Spin Tru	C50-15SM600-KB	\$156.80	-	-	-	-	D
	3.75	6.00	0.94	Parlec	C50-15SM600-P	\$210.00	15KY	3/4"-16	15LS	15LS	B
2" 2.000	4.38	2.00	0.93	Lyndex	C50-20SM200-L	\$223.44	3/4"	1"-14	-	A1-14	B
	4.88	2.75	-	Kingston	C50-20SM275-K	\$131.95	-	-	-	-	F
	4.88	2.75	-	Spin Tru	C50-20SM275-KB	\$148.00	-	-	-	-	D
	4.88	3.00	-	Command	C50-20SM300-M	\$155.82	20KY	1"-14	20LS	20LS	B
	4.38	4.00	0.93	Lyndex	C50-20SM400-L	\$263.62	3/4"	1"-14	-	A1-14	B
	4.88	4.00	-	Kingston	C50-20SM400-K	\$154.44	-	-	-	-	F
	4.88	4.00	-	Spin Tru	C50-20SM400-KB	\$171.20	-	-	-	-	D
	4.88	6.00	-	Kingston	C50-20SM600-K	\$181.78	-	-	-	-	F
2-1/2" 2.500	4.88	2.40	-	Command	C50-25SM240-M	\$201.11	25KY	1"-14	25LS	25LS	B
	4.88	4.00	-	Command	C50-25SM400-M	\$230.02	25KY	1"-14	25LS	25LS	B

Call Us Or Visit Our Website For Our Complete Selection!

LATHE CHUCKS
LIVE CENTERS

VICE JAWS
VICE ACCESSORIES

STRAIGHT SHANK
COLLET HOLDERS

LATHE BUSHINGS
DRILL CHUCKS

CARBIDE INSERTS
THREADING/GROOVING

CUTTING TOOLS
MACHINERY

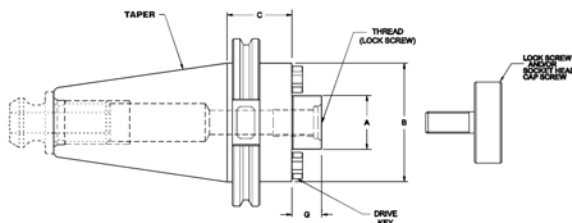
PRECISION TOOLS
DEBURRING

COOLANT/FLUIDS
TOOL STORAGE

CHUCK JAWS
LATHE WORKHOLDING

BT 40 TAPER SHELL MILL HOLDERS

SHELL MILL HOLDERS



**BT-50 Toolholders
Also Available!**



MACHINE VISES
MAGNETIC CHUCKS

RETENTION KNOBS
ER, DA, TG COLLETS

TOOLHOLDERS
TAP HOLDERS

INDEXABLE DRILLS
TURNING & BORING

ENDMILLS, DRILLS
TAPS & REAMERS

ABRASIVES
MEASURING TOOLS

MRO & SAFETY
FLAT STOCK/DRILL ROD

A Pilot Dia	B Dia	C Proj	G	Brand	Part Number	Price	Drive Key	Screw Thread	Lock Screw	Arbor Screw	Code
1/2" 0.500	1.75	1.38	-	Kingston	B40-50SM138-K	\$89.54	-	-	-	-	F
	1.75	1.38	-	Spin Tru	B40-50SM138-KB	\$93.60	-	-	-	-	D
	1.38	1.75	0.57	Lyndex	B40-50SM175-L	\$152.88	1/4"	1/4"-28	-	A1/4-28	B
	1.75	3.50	-	Kingston	B40-50SM350-K	\$99.76	-	-	-	-	F
	1.75	3.50	-	Spin Tru	B40-50SM350-KB	\$113.60	-	-	-	-	D
3/4" 0.750	2.00	1.75	0.67	Lyndex	B40-75SM175-L	\$145.04	5/16"	3/8"-24	-	A3/8-24	B
	-	1.75	-	Kingston	B40-75SM175-K	\$89.76	-	-	-	-	F
	-	1.75	-	Spin Tru	B40-75SM175-KB	\$93.60	-	-	-	-	D
	1.69	1.77	-	Command	B40-75SM177-M	\$108.36	-	-	-	-	C
	1.75	3.50	-	Kingston	B40-75SM350-K	\$99.76	-	-	-	-	F
	1.75	3.50	-	Spin Tru	B40-75SM350-KB	\$132.80	-	-	-	-	D
	1.75	6.00	-	Kingston	B40-75SM600-K	\$121.76	-	-	-	-	F
1.75	6.00	-	Spin Tru	B40-75SM600-KB	\$167.20	-	-	-	-	D	
1" 1.000	2.19	1.00	-	Kingston	B40-10SM100-K	\$89.76	-	-	-	-	F
	2.38	1.75	0.67	Lyndex	B40-10SM175-L	\$145.04	3/8"	1/2"-20	-	A1/2-20	B
	2.25	2.00	0.68	Parlec	B40-10SM200-P	\$108.00	10KY	1/2"-20	10LS	028-188	B
	-	2.25	-	Kingston	B40-10SM225-K	\$89.76	-	-	-	-	F
	-	2.25	-	Spin Tru	B40-10SM225-KB	\$93.60	-	-	-	-	D
	2.19	4.00	-	Kingston	B40-10SM400-K	\$104.16	-	-	-	-	F
	2.19	4.00	-	Spin Tru	B40-10SM400-KB	\$134.40	-	-	-	-	D
	2.19	6.00	-	Kingston	B40-10SM600-K	\$143.55	-	-	-	-	F
	2.19	6.00	-	Spin Tru	B40-10SM600-KB	\$168.80	-	-	-	-	D
1-1/4" 1.25	2.75	1.81	-	Command	B40-12SM181-M	\$108.36	-	-	-	-	C
	2.88	2.00	0.67	Lyndex	B40-12SM200-L	\$152.88	1/2"	5/8"-18	-	A5/8-18	B
	2.88	2.12	-	Kingston	B40-12SM212-K	\$89.76	-	-	-	-	F
	2.88	2.12	-	Spin Tru	B40-12SM212-KB	\$93.60	-	-	-	-	D
	2.75	2.25	0.68	Parlec	B40-12SM225-P	\$117.00	12KY	5/8"-18	12LS	028-193	B
	2.88	2.50	-	Kingston	B40-12SM250-K	\$89.76	-	-	-	-	F
	2.88	2.50	-	Spin Tru	B40-12SM250-KB	\$93.60	-	-	-	-	D
	2.88	4.00	-	Kingston	B40-12SM400-K	\$104.16	-	-	-	-	F
2.88	4.00	-	Spin Tru	B40-12SM400-KB	\$205.60	-	-	-	-	D	
1-1/2" 1.500	3.80	2.00	0.92	Lyndex	B40-15SM200-L	\$174.44	5/8"	3/4"-16	-	A3/4-16	B
	3.75	2.25	0.94	Parlec	B40-15SM225-P	\$125.25	15KY	3/4"-16	15LS	15LS	B
	3.38	2.50	-	Kingston	B40-15SM250-K	\$90.60	-	-	-	-	F
	3.38	2.50	-	Spin Tru	B40-15SM250-KB	\$93.60	-	-	-	-	D
	3.38	4.00	-	Kingston	B40-15SM400-K	\$107.46	-	-	-	-	F
	3.38	4.00	-	Spin Tru	B40-15SM400-KB	\$122.40	-	-	-	-	D
	2.75	4.13	0.94	Command	B40-15SM413-M	\$137.27	-	-	-	-	C

REPLACEMENT LOCK SCREWS



Style	Head Dia	Head Thickness	OAL	Thread	Hex	Standard Screw Part Number	Price Each
LOCK SCREW	0.88	0.38	0.97	3/8-24	0.250	SC-75LS-KB	\$40.51
	1.19	0.28	1.20	1/2-20	0.312	SC-10LS-KB	
	1.50	0.50	1.38	5/8-18	0.312	SC-12LS-KB	
	1.88	0.50	1.75	3/4-16	0.375	SC-15LS-KB	
	2.50	0.50	1.94	1-14	0.500	SC-20LS-KB	
	3.12	0.50	1.95	1-14	0.500	SC-25LS-KB	
SOCKET HEAD CAPSCREW	0.75	0.50	1.75	1/2-20	0.375	SC-10SH-KB	\$9.33
	0.56	0.37	1.37	3/8-24	0.312	SC-75SH-KB	
	0.94	0.62	1.87	5/8-18	0.500	SC-12SH-KB	

Call Us Today For All Of Your Machine Tool Needs!

R8 TOOLHOLDERS

R8 COLLET CHUCKS

- Hardened and precision ground
- For Bridgeport™ type mills
- For ER series collets



Collet Series	Proj.	Body OD	ENDURANCE [C]		COLLIS [C]		LYNDEX [B]	
			Part Number	Price Each	Part Number	Price Each	Part Number	Price Each
ER16	1.25"	1.08"	R8-ER16-E	\$107.45	COL-75937	\$133.96	LY-R8007-0016	\$138.18
ER20	2.00"	1.38"	-	-	-	-	LY-R8007-0020	\$138.18
ER25	2.00"	1.65"	-	-	COL-75939	\$90.53	LY-R8007-0025	\$138.18
ER32	2.25"	2.00"	R8-ER32-E	\$107.45	-	-	-	-
ER40	2.50"	2.48"	R8-ER40-E	\$110.11	COL-75940	\$90.53	-	-

R8 SHELL MILL HOLDERS



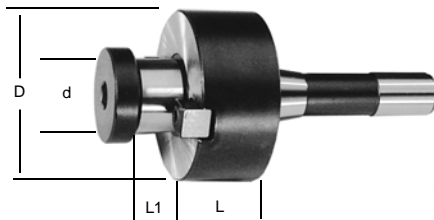
- Hardened and precision ground
- For Bridgeport™ type mills

Pilot Dia	Proj.	ENDURANCE [C]		COLLIS [C]	
		Part Number	Price Each	Part Number	Price Each
1/2"	1.00"	R8-50SM1-E	\$42.89	COL-75924	\$82.37
3/4"	1.00"	R8-75SM1-E	\$43.28	COL-75925	\$82.37
1"	1.00"	R8-10SM1-E	\$47.82	COL-75926	\$93.16
1-1/4"	1.25"	R8-12SM1-E	\$47.82	COL-75927	\$93.16
1-1/2"	1.25"	R8-15SM1-E	\$56.96	COL-75928	\$123.08

R8 SHELL MILL HOLDERS



Shell Mill Holder comes complete with drive keys and arbor screw.



Pilot d	L	D	L1	Part Number	Price Each	Key Size	Arbor Thread
1/2"	1"	1.38"	.57"	LY-850-032	\$96.04	1/4"	1/4-28
3/4"	1"	2.00"	.69"	LY-850-048	\$96.04	5/16"	3/8-24
1"	1"	2.38"	.69"	LY-850-064	\$105.84	3/8"	1/2-20
1-1/4"	1"	2.88"	.69"	LY-850-080	\$105.84	1/2"	5/8-18
1-1/2"	1-3/4"	3.50"	.94"	LY-850-096	\$135.24	5/8"	3/4-16

R8 STUB MILL HOLDERS



- Hardened and precision ground
- For Bridgeport™ type mills



Shank	Arbor Dia	Proj.	ENDURANCE [C]		LYNDEX [B]	
			Part Number	Price Each	Part Number	Price Each
R8	1.00"	2.75"	R8-SA100-E	\$64.80	LY-880-064	\$132.30
	1.25"	2.75"	R8-SA125-E	\$74.02	LY-880-080	\$149.94

R8 TO JACOBS TAPER ARBORS

- Hardened and precision ground
- Made of high grade tool steel



Description	ENDURANCE [C]		COLLIS [C]	
	Part Number	Price Each	Part Number	Price Each
R8 to JT33	R8-33JT-E	\$17.27	COL-75933	\$38.00
R8 to JT2	R8-02JT-E	\$17.27	COL-75931	\$38.00
R8 to JT3	R8-03JT-E	\$17.27	COL-75932	\$38.00
R8 to JT6	R8-06JT-E	\$17.27	COL-75934	\$38.00

R8 TO MORSE TAPER SLEEVES

- Hardened and precision ground
- Made of high grade tool steel
- Thread of drawbar end: R8-7/16"-20



Description	ENDURANCE [C]		COLLIS [C]	
	Part Number	Price Each	Part Number	Price Each
R8 to MT1	-	-	COL-75919	\$76.93
R8 to MT2	R8-02MT-E	\$21.05	COL-75920	\$76.93
R8 to MT3	R8-03MT-E	\$23.47	COL-75921	\$76.93
R8 to MT4	R8-04MT-E	\$27.00	-	-

KEYLESS DRILL CHUCKS WITH R8 SHANK



FEATURES:

- Integral shank design is more compact than a combined drill chuck and arbor, resulting in greater accuracy, rigidity and larger work envelope
- Keyless operation and balanced, self-tightening design.



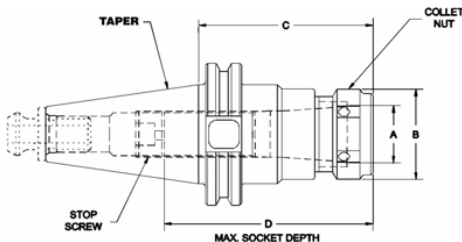
Capacity	Max. RPM	Part Number	Price Each
1/32-1/2	7,000	ALB-73040	\$344.85
1/8-5/8	4,000	ALB-73090	\$379.05

Call Us Today For All Of Your Machine Tool Needs!

CHUCK JAWS
LATHE WORKHOLDING

NMTB TAPER COLLET CHUCKS/SHELL MILL HOLDERS

NMTB TAPER COLLET CHUCKS

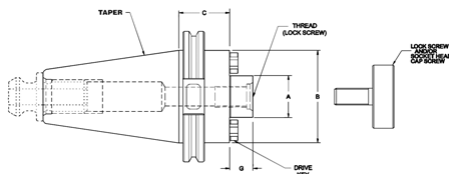


Taper	Collet Series	C Proj.	B Nut Dia.	Brand	Part Number	Price Each	Code
NMTB 30	DA100	2.75	1.06	Lyndex	N30-10DA275-L	\$132.30	B
	DA180	3.00	1.44	Lyndex	N30-18DA300-L	\$152.88	B
	DA200	2.50	0.86	Lyndex	N30-20DA250-L	\$132.30	B
	DA300	2.50	0.55	Lyndex	N30-30DA250-L	\$132.30	B
	TG75	2.50	1.89	Lyndex	N30-75TG250-L	\$146.70	B
	TG100	3.94	2.5	Lyndex	N30-10TG394-L	\$146.70	B
NMTB 40	DA100	2.75	1.06	Lyndex	N40-10DA275-L	\$146.70	B
	DA180	3.00	1.44	Lyndex	N40-18DA300-L	\$146.70	B
	DA200	2.50	0.86	Lyndex	N40-20DA250-L	\$146.70	B
	DA300	2.50	0.55	Lyndex	N40-30DA250-L	\$146.70	B
	TG75	1.88	2.12	Collis	N40-75TG188-C	\$114.03	B
	TG100	2.19	2.44	Collis	N40-10TG219-C	\$115.92	B

MACHINE VISES
MAGNETIC CHUCKS

RETENTION KNOBS
ER, DA, TG COLLETS

NMTB - SHELL MILL HOLDERS



Taper	A Pilot Dia	B Dia.	C Proj.	G	Brand	Part Number	Price Each	Code
NMTB 30	3/4"	1.75	1.31	0.68	Parlec	N30-75SM131-P	\$165.62	B
	0.750	1.75	1.31	0.69	Domestic	N30-75SM131-A	\$135.15	B
	1"	2.19	1.31	0.69	Domestic	N30-10SM131-A	\$135.15	B
	1.000	2.25	1.31	0.68	Parlec	N30-10SM131-P	\$166.60	B
	1 1/4"	2.75	1.44	0.68	Parlec	N30-12SM144-P	\$194.04	B
	1.250	2.88	1.44	0.69	Domestic	N30-12SM144-A	\$149.60	B
NMTB 40	3/4"	1.75	1.48	0.69	Collis	N40-75SM148-C	\$115.02	B
	0.750	1.75	1.50	0.69	Endurance	N40-75SM1-E	\$93.18	C
	1"	-	1.734	-	Collis	N40-10SM173-C	\$119.79	B
	1.000	2.19	1.50	0.69	Endurance	N40-10SM1-E	\$93.18	C
	1-1/4"	-	1.79	-	Collis	N40-12SM179-C	\$119.79	B
	1.250	-	1.79	0.69	Endurance	N40-12SM1-E	\$96.50	C
	1-1/2"	-	1.73	0.94	Collis	N40-15SM173-C	\$119.79	B
1.500	-	1.73	0.94	Endurance	N40-15SM1-E	\$104.69	C	

TOOLHOLDERS
TAP HOLDERS

INDEXABLE DRILLS
TURNING & BORING

MARK II SHRINK FIT HEAT SHRINK MACHINES

MARK II w/ patented Universal Tool Holder

Shrink Fit Process

Shrink fit technology has been around for many years and has been increasingly growing in demand. The process is simple, it works by utilizing a toolholder that has an inside diameter that is smaller than the cutting tool shank itself. By rapidly applying heat to the toolholder, the inside diameter of the toolholder expands, allowing the tool to be installed or replaced with ease.

Mechanical Specifications:

Temp Range: 0-50° c operating -30 to 65° c storage

Tool Sizes: 1/4" to 1-1/4" dia

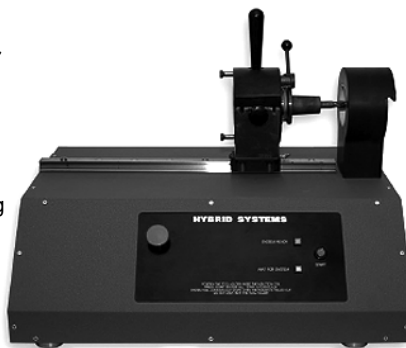
Toolholder Types:

BT Taper, CAT Taper HSK63

Dimensions: 12" H x 22" W x 14" D

Finish: Rugged industrial finish

Weight: 67 lbs



Electrical Specifications:

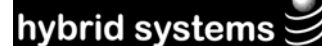
Input Power: 3 Ph, 208 VAC, 28A

Output Power: 10 KVA

Mode of Operation:

Pre-set for plug & play

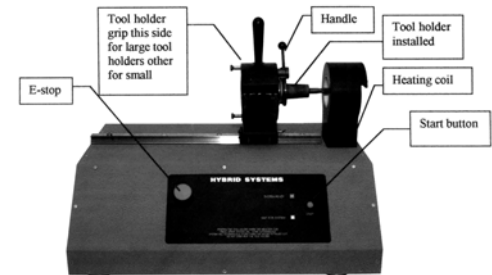
Protections: Line voltage spikes, loss of voltage, 3 phase line filter, 3 phase circuit breaker



FEATURES:

- Tool is heated in less than 10 seconds
- Easy set-up, simple to use
- Emergency stop
- Fan cooled coil
- Needs no shop air, or liquid coolant
- Rugged construction for long life
- Can be used repeatedly 200 times per day

PLEASE CALL FOR PRICING



ENDMILLS, DRILLS
TAPS & REAMERS

ABRASIVES
MEASURING TOOLS

MRO & SAFETY
FLAT STOCK/DRILL ROD

Call Us Today For All Of Your Machine Tool Needs!