

TOOLING COMPONENTS/T-SLOT NUTS

MACHINISTS' CLAMP KITS STEEL STEP BLOCK & CLAMP SETS 52 Piece Clamp Kit For Bridgeport Type Mills



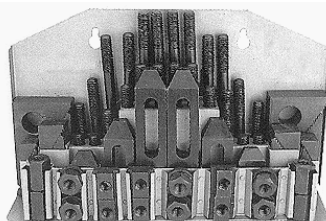
- Includes:**
 4 Coupling Nuts
 6 Flange Nuts
 6 T-Slot Nuts
 1 T-Slot Cleaner
 24 Studs - 4 Each of:
 3", 4", 5", 6", 7" and 8" long
 6 Step Blocks
 6 Serrated End Clamps
 1 Holder
 Bridgeport type milling machines
 use part number **TECO-20402**



Table T-Slot Size	Stud Size	Weight (lbs/kit)	Part Number	Price Each
With 1" Thick Step Blocks				
7/16	3/8-16	18.5	TECO-20412	\$247.46
1/2	3/8-16	18.5	TECO-20413	\$242.11
9/16	3/8-16	18.5	TECO-20414	\$247.46
9/16	1/2-13	24	TECO-20401	\$254.93
5/8	1/2-13	24	TECO-20402	\$224.96
11/16	1/2-13	24	TECO-20403	\$245.30
5/8	1/2-13	24	TECO-20404	\$247.46
11/16	5/8-11	29	TECO-20415	\$316.01
3/4	5/8-11	29	TECO-20416	\$317.09
13/16	5/8-11	29	TECO-20417	\$329.91

MACHINIST CLAMP SET

BEST VALUE



- Contents:**
 • 24 Studs- 3", 4", 5", 6", 7" & 8" long
 • 4 Coupling Units
 • 6 Flange Nuts
 • 6 Forged Steel step clamps
 • 6 T-Nuts
 • 12 Steel Step Blocks
 • Also includes T-slot cleaner, wrench and wall rack
 • **TECO-20402PL** made in USA!

Fits all Bridgeport® type milling machines. This clamping set is made from powdered steel for strength and longer tool life, with all parts heat-treated.

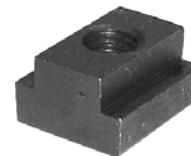
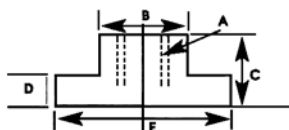
No. Of Pieces	Description	Part Number	Price Each
58	5/8" slot x 1/2-13 bolt	CK-58	\$54.00
	5/8" slot x 1/2-13 bolt	TECO-20402PL	\$74.99
	1/2" slot x 3/8"-16 bolt	CK-58-3/8	\$52.00
	3/4" slot x 5/8"-11 bolt	CK-58-5/8	\$78.00

T-SLOT NUTS

BEST VALUE



- FEATURES:**
 • Heat treated steel
 • Black oxide finish to ensure long life
 • Case Hardened

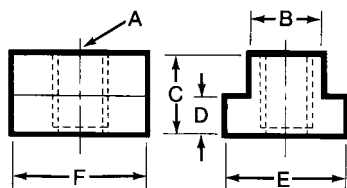
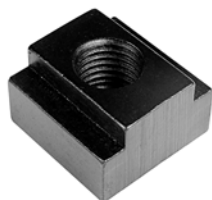


B	A Thread	C	D	E	Length	Part Number	Price Each
3/8	5/16-18	1/2	3/16	5/8	7/8	A-900-0002-01	\$1.48
1/2	3/8-16	1/2	9/32	7/8	7/8	A-900-0002-03	\$1.48
5/8	1/2-13	5/8	11/32	1	1-1/8	A-900-0002-05	\$1.70
3/4	5/8-11	3/4	15/32	1-1/4	1-1/4	A-900-0002-07	\$2.01
7/8	3/4-10	1	9/16	1-1/2	1-1/2	A-900-0002-09	\$2.50
1	7/8-9	1	5/8	1-5/8	1-3/4	A-900-0002-10	\$3.00

T-SLOT NUTS



- FEATURES:**
 • Black Oxide Finish
 • Case Hardened- 1018 Material
 • The last thread is incomplete on T-Slot Nuts to prevent the stud from turning through the bottom of the nut.
 • Many sizes conform to TCMAI standards
 • Special sizes quoted upon request
 • Tapped through T-Slot Nuts are also available
 *T-Slot Nuts are undersized to fit machine table slot.
 ** English T-Slot Nut will fit this size metric machine T-Slot.



Thread A	English* Table Slot B	Metric** Table Slot	C	D	E	F	Part Number	Price Each
1/4-20	5/16	8MM	1/4	3/16	9/16	9/16	TECO-41401	\$3.02
	3/8	10MM	3/8	15/64	9/16	9/16	TECO-41402	\$3.07
5/16-18	3/8	10MM	3/8	1/4	5/8	7/8	TECO-41403	\$2.51
	7/16	12MM	1/2	7/32	11/16	7/8	TECO-41433	\$2.58
	1/2	13MM	1/2	9/32	7/8	7/8	TECO-41434	\$2.58
3/8-16	7/16	12MM	1/2	7/32	11/16	7/8	TECO-41404	\$2.51
	1/2	12MM	1/2	9/32	7/8	7/8	TECO-41405	\$2.51
	9/16	15MM	5/8	11/32	7/8	1-1/8	TECO-41406	\$2.90
1/2-13	9/16	15MM	5/8	11/32	7/8	1-1/8	TECO-41409	\$2.83
	5/8	16MM	5/8	11/32	1	1-1/8	TECO-41410	\$3.22
	5/8	16MM	3/4	3/8	1-1/8	1-1/8	TECO-41411	\$4.27
	11/16	18MM	3/4	7/16	1-1/8	1-1/4	TECO-41412	\$3.45
5/8-11	3/4	20MM	3/4	15/32	1-1/4	1-1/4	TECO-41413	\$4.71
	11/16	18MM	3/4	7/16	1-1/8	1-1/4	TECO-41415	\$3.65
	3/4	20MM	3/4	15/32	1-1/4	1-1/4	TECO-41416	\$3.83
3/4-10	13/16	21MM	1	9/16	1-1/4	1-1/2	TECO-41417	\$5.52
	7/8	23MM	1	9/16	1-1/2	1-1/2	TECO-41418	\$6.10
	1	26MM	1	5/8	1-5/8	1-3/4	TECO-41419	\$6.62
	1	26MM	1-1/2	3/4	1-3/4	1-3/4	TECO-41420	\$7.50
	1-1/16	27MM	1-1/8	11/16	1-5/8	2	TECO-41422	\$8.79

Call Us Or Visit Our Website For Our Complete Selection!

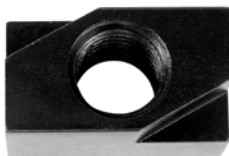
QUARTER TURN T-SLOT NUTS

Please See Pages 621-622 for more TE-CO Products

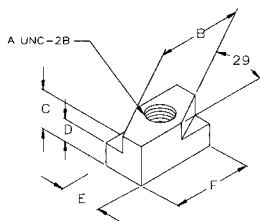
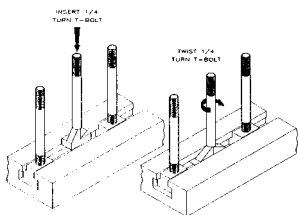


FEATURES:

- Sintered Metal
- The last thread is incomplete on T-Slot Nuts to prevent the stud from turning through the bottom of the nut.
- Special sizes quoted upon request
- *Quarter Turn T-Slot Nuts are undersized to fit machine table slot.



Full Line Available!
Please call for more information.

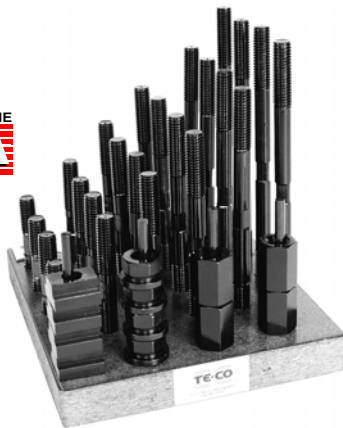


Thread A	Table Slot B	Metric* Table Slot	C	D	E	F	Part Number	Price Each
3/8-16	7/16	12MM	1/2	0.208	0.438	0.75	TECO-41450	\$3.14
	1/2	12MM	1/2	0.271	0.500	1	TECO-41451	\$3.14
1/2-13	9/16	15MM	5/8	0.333	0.563	0.94	TECO-41452	\$3.52
	5/8	16MM	5/8	0.333	0.625	1.25	TECO-41453	\$3.89
5/8-11	11/16	18MM	3/4	0.427	0.688	1.38	TECO-41454	\$4.32
	3/4	20MM	3/4	0.458	0.750	1.50	TECO-41455	\$4.58
1/2-13	11/16	18MM	3/4	0.427	0.688	1.3	TECO-41456	\$5.09
	3/4-10	26MM	1	0.615	1	1.75	TECO-41457	\$5.52

T-NUT & STUD KITS

Kit Contains:

- 4 Coupling Nuts
 - 4 Flange Nuts
 - 4 T-Slot Nuts
 - 1 T-Slot Cleaner
 - 24 Studs - 4 ea. of 3", 4", 5", 6", 7" and 8" long
- Versatility expanded when used with Step Block & Clamp Kits.



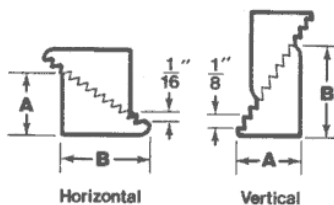
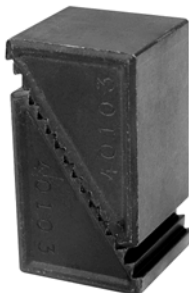
Full Line Available!
Please call for more information.

Table T-Slot Size	Stud Size	Wt. (lbs/kit)	Part Number	Price Each
3/8	5/16-18	8	TECO-20601	\$73.65
7/16	3/8-16	8	TECO-20602	\$75.19
1/2	3/8-16	8	TECO-20603	\$77.92
9/16	3/8-16	8	TECO-20604	\$79.42
9/16	1/2-13	12	TECO-20605	\$85.08
5/8	1/2-13	12	TECO-20606	\$87.92
11/16	1/2-13	13	TECO-20607	\$89.56
11/16	5/8-11	16.3	TECO-20608	\$103.16
3/4	5/8-11	16.3	TECO-20609	\$114.85
13/16	5/8-11	16.3	TECO-20610	\$124.69
13/16	3/4-10	24	TECO-20611	\$165.78
7/8	3/4-10	24	TECO-20612	\$168.72
1	3/4-10	24	TECO-20613	\$172.94
1-1/16	3/4-10	25	TECO-20618	\$320.59

STEP BLOCK KITS STEEL

FEATURES:

- Larger sizes have chamfered holes for ease of use.
- Blocks work in conjunction with Serrated End clamps.
- Two halves = One Block



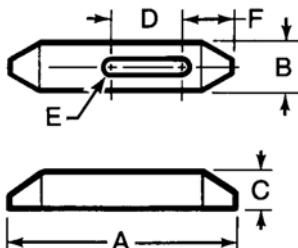
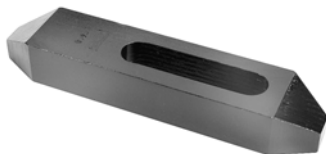
Height Adj. Range	A	B	Part Number	Price Each
With 1" Step Blocks				
3/4 to 1-5/8	1-1/16	11/16	TECO-40102	\$5.37
1-1/8 to 2-1/2	1-39/64	1-1/16	TECO-40103	\$7.67
2-1/2 to 6	3-3/4	2-15/32	TECO-40104*	\$18.56
With 1 1/2" Thick Step Blocks				
1-3/4 to 4	2-17/32	1-43/64	TECO-40105	\$13.29
2-1/2 to 6	3-3/4	2-15/32	TECO-40106*	\$26.34
3-1/2 to 9	5-21/64	3-7/16	TECO-40107*	\$47.47
With 2" Thick Step Blocks				
1-3/4 to 4	2-17/32	1-43/64	TECO-40108	\$22.07
2-1/2 to 6	3-3/4	2-15/32	TECO-40109*	\$33.54
3-1/2 to 9	5-21/64	3-7/16	TECO-40110*	\$61.57
4-7/8 to 10-1/2	7-3/8	4-3/4	TECO-40111	\$159.37

*Indicates chamfered holes

PLAIN CLAMPS

FEATURES:

- Tapered nose allows clamping in small areas.
- Case Hardened
- Black Oxide Finish
- Material: 1018 Steel



A	B	C	D	Stud Size E	F	Part Number	Price Each
2-1/2	1	1/2	13/16	5/16 and 3/8	27/32	TECO-30401	\$9.60
4	1	5/8	1-7/16	5/16 and 3/8	1-1/32	TECO-30402	\$12.88
6	1-1/8	3/4	2-3/16	5/16 and 3/8	1-5/32	TECO-30403	\$16.69
2-1/2	1-1/8	1/2	11/16	1/2	29/32	TECO-30404	\$11.19
4	1-1/4	3/4	1-5/16	1/2	1-5/32	TECO-30405	\$14.99
6	1-1/4	7/8	2-1/16	1/2	1-9/32	TECO-30406	\$18.50
2-1/2	1-1/4	5/8	9/16	5/8	31/32	TECO-30407	\$13.05
4	1-1/2	3/4	1-3/16	5/8	1-9/32	TECO-30408	\$16.39
6	1-1/2	7/8	1-15/16	5/8	1-13/32	TECO-30409	\$21.13
4	1-1/2	3/4	1-1/16	3/4	1-11/32	TECO-30410	\$17.56
6	1-1/2	1	1-15/16	3/4	1-15/32	TECO-30411	\$26.40
8	1-3/4	1-1/8	2-3/16	3/4	1-29/32	TECO-30412	\$35.47

Call Us Today For All Of Your Machine Tool Needs!

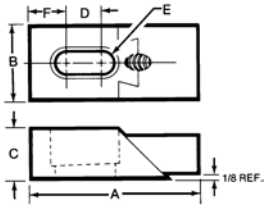
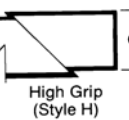
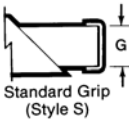
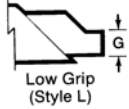
NUZZLER® EDGE CLAMPS

FEATURES:

- Clamp Material: 1018 Steel
- Black Oxide Finish
- Edge Clamps feature a double action, adjustable nose which exerts clamping pressures both downward and inward through a 45 degree angle.
- Noses have serrations for better gripping of non-finished or semi-finished workpieces.
- Tapered slots prevent clamp from sliding off the workpiece during tightening.
- Length "A" is calculated with nose raised 1/8".
- The Low Profile Nose provides a greater machining clearance.
- Clamp Washer is included with each Edge Clamp.



A	B	C	D	E	F	G	Wrench Size	Nose Style	Part Number	Price Each
1-7/8	1	5/8	1/4	5/16	13/32	1/8	5/32	L	TECO-33817	\$46.36
						5/8	5/32	S	TECO-33818	\$48.11
2-3/8	1	5/8	3/4	5/16	5/16	1/8	5/32	L	TECO-33819	\$48.11
						5/8	5/32	S	TECO-33820	\$52.68
2-7/8	1	5/8	1-1/4	5/16	5/16	1/8	5/32	L	TECO-33821	\$51.10
						5/8	5/32	S	TECO-33822	\$54.14
2-15/16	1-1/4	5/8	3/8	3/8	7/16	1/4	3/16	L	TECO-33801	\$47.47
						5/8	3/16	S	TECO-33802	\$51.10
2-3/4	1-1/4	5/8	13/16	3/8	1/2	1/4	3/16	L	TECO-33890	\$51.10
						5/8	3/16	S	TECO-33891	\$54.14
3-5/16	1-1/2	3/4	3/4	1/2	11/16	3/8	1/4	L	TECO-33805	\$53.97
						3/4	1/4	S	TECO-33806	\$57.89
3-7/8	1-1/2	7/8	1-1/4	1/2	1/2	1/4	1/4	L	TECO-33823	\$51.10
						7/8	1/4	S	TECO-33824	\$55.31
4-1/8	1-1/4	5/8	2	3/8	11/16	1/4	3/16	L	TECO-33803	\$52.68
						5/8	3/16	S	TECO-33804	\$55.84
4-11/16	1-1/4	5/8	2-3/16	3/8	15/16	1/4	3/16	L	TECO-33892	\$54.14
						5/8	3/16	S	TECO-33893	\$57.07
5-3/16	1-1/2	3/4	2-1/2	1/2	5/8	3/8	1/4	L	TECO-33807	\$56.78
						3/4	1/4	S	TECO-33808	\$59.64
				5/8	5/8	3/8	1/4	L	TECO-33712	\$56.78
						3/4	1/4	S	TECO-33713	\$59.64



LATHE CHUCKS
LIVE CENTERS

VICE JAWS
VICE ACCESSORIES

STRAIGHT SHANK
COLLET HOLDERS

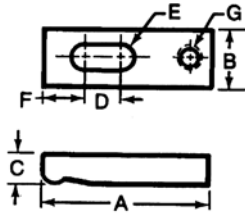
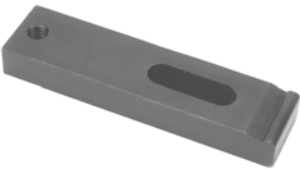
LATHE BUSHINGS
DRILL CHUCKS

TAPPED END CLAMPS

FEATURES:

- Material: 1018 Steel
- Case Hardened
- Black Oxide Finish

Full Line Available!
Please call for more information.



A	B	C	D	Stud Size E	F	G	Part Number	Price Each
2	5/8	3/8	1/2	1/4	7/16	1/4-20	TECO-30902	\$9.60
2-1/2	5/8	3/8	1/2	1/4	9/16	1/4-20	TECO-30903	\$10.31
2-3/4	1	1/2	7/16	5/16	13/16	5/16-18	TECO-30905	\$11.65
3-1/4	1	1/2	13/16	5/16	7/8	5/16-18	TECO-30906	\$11.94
4	1	1/2	7/8	5/16	15/16	5/16-18	TECO-30907	\$12.65
3	1-1/4	5/8	3/4	3/8	9/16	3/8-16	TECO-30908	\$13.06
4	1-1/4	5/8	1	3/8	3/4	3/8-16	TECO-30909	\$13.17
5	1-1/4	5/8	1-1/2	3/8	3/4	3/8-16	TECO-30910	\$14.75
4	1-1/4	5/8	1	1/2	3/4	1/2-13	TECO-30912	\$14.99
4-1/2	1-1/4	5/8	1-1/2	1/2	13/16	1/2-13	TECO-30913	\$15.10
5	1-1/4	5/8	1-1/2	1/2	1-1/4	1/2-13	TECO-30914	\$15.34
6	1-1/4	5/8	1-1/2	1/2	2-1/4	1/2-13	TECO-30916	\$17.09

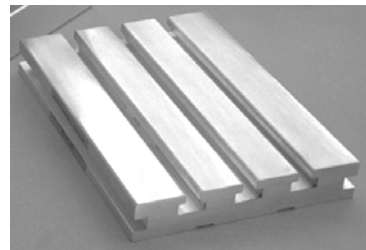
CARBIDE INSERTS
THREADING/GROOVING

CUTTING TOOLS
MACHINERY

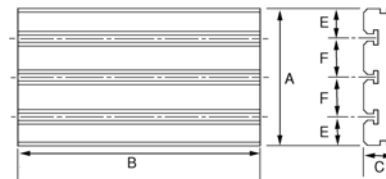
PRECISION TOOLS
DEBURRING

COOLANT/FILDS
TOOL STORAGE

ALUMINUM SUB PLATES AND MOUNTING CLAMPS



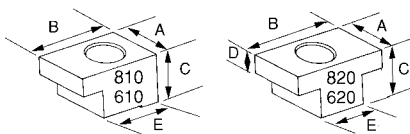
Extruded aluminum sub plates are available in standard sizes as well as special length. Plates up to 24" long are machine top and bottom to .005 flatness and parallelism per foot.



A x B x C	D	Slots	E	F	G	H	I	Part Number	Price Each
9.0 x 13.0 x 1.48	5/8	3	2.00	2.50	.50	.50	.50	MITEE-22913	\$218.03
9.0 x 18.0 x 1.48	5/8	3	2.00	2.50	.50	.50	.50	MITEE-22918	\$303.72

MOUNTING CLAMPS

Clamps for mounting sub plates and many types of vises.



Size	A	B	C	D	E	Part Number	Price Each
1/2	1.25	1.50	.87	.35	1.10	MITEE-22810	\$19.33

Call Us Or Visit Our Website For Our Complete Selection!

TOOLING COMPONENTS

HEX SOCKET HEAD SWIVEL SCREW CLAMPS

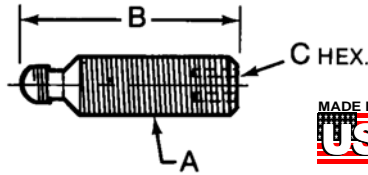
For use when space is limited and greater clamping pressures are needed

Full Line Available!
Please call for more information.



FEATURES:

- Material: 12L14 Steel on all screw parts
- Black Oxide Finish
- Order pads separately

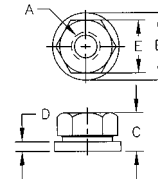


Thread A	B	C	Part Number	Price Each	For Use W/ Small Pad	Small Pad Price	For Use W/ Large Pad	Large Pad Price
1/4-20	15/32	3/32	TECO-31221	\$2.74	TECO-31501	\$1.18	TECO-31601	\$1.14
	23/32	3/32	TECO-31222	\$2.74	TECO-31501	\$1.18	TECO-31601	\$1.14
	31/32	3/32	TECO-31223	\$2.74	TECO-31501	\$1.18	TECO-31601	\$1.14
	1-15/32	3/32	TECO-31224	\$2.99	TECO-31501	\$1.18	TECO-31601	\$1.14
5/16-18	23/32	5/32	TECO-31231	\$2.99	TECO-31502	\$1.28	TECO-31602	\$1.28
	31/32	5/32	TECO-31232	\$2.99	TECO-31502	\$1.28	TECO-31602	\$1.28
	1-15/32	5/32	TECO-31233	\$3.29	TECO-31502	\$1.28	TECO-31602	\$1.28
	1-31/32	5/32	TECO-31234	\$3.29	TECO-31502	\$1.28	TECO-31602	\$1.28
3/8-16	11/16	3/16	TECO-31241	\$3.42	TECO-31503	\$1.35	TECO-31603	\$1.50
	15/16	3/16	TECO-31242	\$3.42	TECO-31503	\$1.35	TECO-31603	\$1.50
	1-7/16	3/16	TECO-31243	\$3.54	TECO-31503	\$1.35	TECO-31603	\$1.50
	1-15/16	3/16	TECO-31244	\$3.77	TECO-31503	\$1.35	TECO-31603	\$1.50
1/2-13	15/16	1/4	TECO-31252	\$3.97	TECO-31504	\$1.41	TECO-31604	\$1.73
	1-7/16	1/4	TECO-31253	\$4.70	TECO-31504	\$1.41	TECO-31604	\$1.73
	2-15/16	1/4	TECO-31255	\$4.70	TECO-31504	\$1.41	TECO-31604	\$1.73

FLANGE NUTS

FEATURES:

- Black Oxide Finish
- Case Hardened
- 12L14 Material
- Available in Coarse or Fine Threads
- Many sizes conform to TCMAI standards
- Special sizes quoted upon request



UNC Flange Nuts

Thread A	B	C	D	E	Part Number	Price Each
1/4-20	5/8	5/16	3/32	1/2	TECO-41601	\$1.82
5/16-18	3/4	3/8	1/8	9/16	TECO-41602	\$2.02
3/8-16	7/8	1/2	1/8	11/16	TECO-41603	\$2.14
7/16-14	1	9/16	5/32	3/4	TECO-41604	\$2.44
1/2-13	1-1/8	11/16	3/16	7/8	TECO-41605	\$2.44
5/8-11	1-3/8	13/16	3/16	1-1/16	TECO-41606	\$3.07
3/4-10	1-5/8	1	1/4	1-1/4	TECO-41607	\$4.64
7/8-9	1-3/4	1-1/8	1/4	1-7/16	TECO-41608	\$6.33
1-8	2	1-1/4	1/4	1-5/8	TECO-41609	\$7.61
1-1/4-7	2-1/2	1-1/4	1/4	1-13/16	TECO-41611	\$15.57

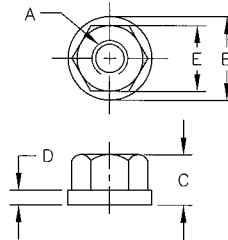
UNF Flange Nuts

Thread A	B	C	D	E	Part Number	Price Each
1/4-28	5/8	5/16	3/32	1/2	TECO-41701	\$2.08
5/16-24	3/4	3/8	1/8	9/16	TECO-41702	\$2.14
3/8-24	7/8	1/2	1/8	11/16	TECO-41703	\$2.19
7/16-20	1	9/16	5/32	3/4	TECO-41704	\$2.51
1/2-20	1-1/8	11/16	3/16	7/8	TECO-41705	\$2.44
5/8-18	1-3/8	13/16	3/16	1-1/16	TECO-41706	\$3.27
3/4-16	1-5/8	1	1/4	1-1/4	TECO-41707	\$4.64
7/8-14	1-3/4	1-1/8	1/4	1-7/16	TECO-41708	\$6.56
1-14	2	1-1/4	1/4	1-5/8	TECO-41709	\$7.67

SWIVEL FLANGE NUTS

FEATURES:

- Black Oxide Finish
- Case Hardened
- 12L14 Material
- Head rotates but washer remains stationary upon contact and holds rigidly without marring the workpiece.



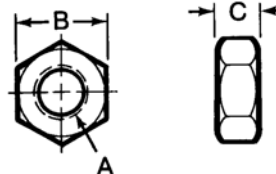
Thread A	B	C	D	E	Part Number	Price Each
1/4-20	5/8	3/8	1/8	1/2	TECO-42001	\$3.70
5/16-18	3/4	7/16	9/64	9/16	TECO-42002	\$3.89
3/8-16	7/8	17/32	5/32	11/16	TECO-42003	\$4.32
1/2-13	1-1/8	23/32	7/32	7/8	TECO-42004	\$4.96
5/8-11	1-3/8	29/32	1/4	1-1/16	TECO-42005	\$6.03
3/4-10	1-5/8	1-1/64	9/32	1-1/4	TECO-42006	\$7.47
7/8-9	1-3/4	1-1/8	7/16	1-7/16	TECO-42007	\$10.72
1-8	2	1-15/64	15/32	1-5/8	TECO-42008	\$13.47

HEAVY HEX NUTS

Please See Pages 620-621 for more TE-CO Products

FEATURES:

- Black Oxide Finish
- Case Hardened
- High Grade Alloy Steel
- Will outlast ordinary Hex Nuts when used in repetitive operations.



Thread A	B	C	Pkg Qty	Part Number	Price Each
1/4-20	1/2	15/64	25	TECO-42101	\$0.43
5/16-18	9/16	19/64	25	TECO-42102	\$0.52
3/8-16	11/16	23/64	25	TECO-42103	\$0.54
7/16-14	3/4	27/64	25	TECO-42104	\$0.86
1/2-13	7/8	31/64	25	TECO-42105	\$0.72
5/8-11	1-1/16	39/64	25	TECO-42106	\$0.93
3/4-10	1-1/4	47/64	25	TECO-42107	\$1.44
7/8-9	1-7/16	55/64	25	TECO-42108	\$2.83
1-8	1-5/8	63/64	25	TECO-42109	\$2.95



Call Us Today For All Of Your Machine Tool Needs!

CHUCK JAWS
LATHE WORKHOLDING

MACHINE VISES
MAGNETIC CHUCKS

RETENTION KNOBS
ER, DA, TG COLLETS

TOOLHOLDERS
TAP HOLDERS

INDEXABLE DRILLS
TURNING & BORING

ENDMILLS, DRILLS
TAPS & REAMERS

ABRASIVES
MEASURING TOOLS

MRO & SAFETY
FLAT STOCK/DRILL ROD

TOOLING COMPONENTS

C

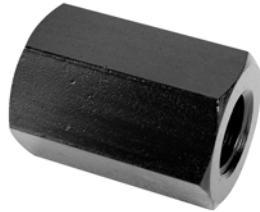
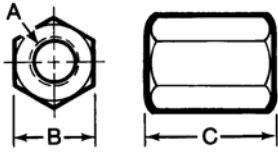
LATHE CHUCKS
LIVE CENTERS

COUPLING (EXTENSION) NUTS

FEATURES:

- Black Oxide Finish
- Case Hardened
- 1117 Material
- Coupling Nuts can be used to join two or more studs for a desired length.
- Many sizes conform to TCMAI standards

Full Line Available!
Please call for more information.



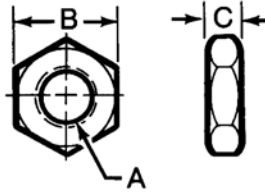
Thread A	B	C	Pkg Qty	Part Number	Price Each
1/4-20	1/2	5/8	25	TECO-41501	\$2.25
5/16-18	9/16	7/8	25	TECO-41502	\$2.44
3/8-16	11/16	1	25	TECO-41503	\$2.70
7/16-14	3/4	1-1/4	25	TECO-41504	\$3.07
1/2-13	7/8	1-1/4	25	TECO-41505	\$3.27
5/8-11	1-1/16	1-5/8	25	TECO-41506	\$4.77
3/4-10	1-1/4	1-7/8	25	TECO-41507	\$6.62
7/8-9	1-7/16	2-1/4	25	TECO-41508	\$9.95
1-8	1-5/8	2-1/2	25	TECO-41509	\$10.31

VICE JAWS
VICE ACCESSORIES

HEAVY HEX JAM NUTS

FEATURES:

- Black Oxide Finish
- High Grade Alloy Steel
- Will outlast ordinary Hex Jam Nuts when used in repetitive operations



Thread A	B	C	Pkg Qty	Part Number	Price Each
1/4-20	1/2	11/64	25	TECO-42201	\$0.27
5/16-18	9/16	13/64	25	TECO-42202	\$0.29
3/8-16	11/16	15/64	25	TECO-42203	\$0.34
7/16-14	3/4	17/64	25	TECO-42204	\$0.53
1/2-13	7/8	19/64	25	TECO-42205	\$0.57
5/8-11	1-1/16	23/64	25	TECO-42206	\$0.64
3/4-10	1-1/4	27/64	25	TECO-42207	\$1.07
7/8-9	1-7/16	31/64	25	TECO-42208	\$2.15
1-8	1-5/8	35/64	25	TECO-42209	\$2.81

STRAIGHT SHANK
COLLET HOLDERS

LATHE BUSHINGS
DRILL CHUCKS

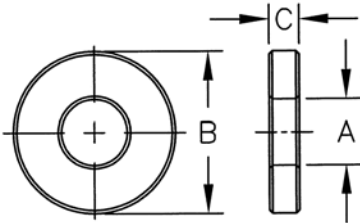
Full Line Available!
Please call for more information.

HARDENED FLAT WASHERS

FEATURES:

- Black Oxide Finish - steel washers only
- Case Hardened - steel washers only
- Material: C1010 - Steel or 303 Stainless Steel
- Many sizes conform to TCMAI standards
- Large Quantities quoted upon request

Please See Pages 620-621 for more TE-CO Products



Stud Size	A	B	C	Pkg Qty	Steel	
					Part Number	Price Each
3/16	13/64	1/2	3/32	50	TECO-42600	\$0.41
1/4	9/32	5/8	1/8	50	TECO-42601	\$0.44
5/16	11/32	3/4	1/8	50	TECO-42602	\$0.47
3/8	13/32	7/8	1/8	50	TECO-42603	\$0.48
7/16	15/32	1	1/8	50	TECO-42604	\$0.60
1/2	17/32	1-1/8	1/8	50	TECO-42605	\$0.60
5/8	21/32	1-3/8	1/8	50	TECO-42606	\$0.73
3/4	25/32	1-5/8	5/32	50	TECO-42607	\$1.05
7/8	29/32	1-3/4	5/32	50	TECO-42608	\$1.44
1	1-1/32	2	3/16	50	TECO-42609	\$1.94
1-1/8	1-5/32	2-1/4	7/32	50	TECO-42610	\$4.15
1-1/4	1-9/32	2-1/2	9/32	50	TECO-42611	\$4.15
#4	1/8	5/16	5/64	50	TECO-42612	\$0.32
#6	5/32	3/8	5/64	50	TECO-42613	\$0.37
#8	3/16	7/16	5/64	50	TECO-42614	\$0.40

CARBIDE INSERTS
THREADING/GROOVING

CUTTING TOOLS
MACHINERY

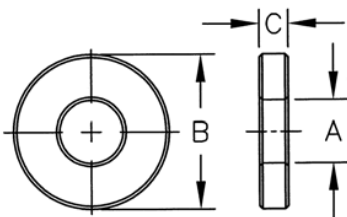
HEAVY DUTY HARDENED FLAT WASHERS

FEATURES:

- Black Oxide Finish
- Case Hardened
- C1010 Material
- Large Quantities quoted upon request



Full Line Available!
Please call for more information.



Stud Size	A	B	C	Pkg Qty	Part Number	Price Each
1/4	9/32	5/8	3/16	50	TECO-42619	\$1.05
5/16	11/32	3/4	3/16	50	TECO-42620	\$1.12
3/8	13/32	7/8	3/16	50	TECO-42621	\$1.18
7/16	15/32	1	3/16	50	TECO-42622	\$1.26
1/2	17/32	1-1/8	3/16	50	TECO-42623	\$1.32
5/8	21/32	1-3/8	3/16	50	TECO-42624	\$1.44
3/4	25/32	1-5/8	1/4	50	TECO-42625	\$1.75
7/8	29/32	1-3/4	1/4	50	TECO-42626	\$2.37
1	1-1/32	2	9/32	50	TECO-42627	\$3.11

PRECISION TOOLS
DEBURRING

COOLANT/FLUIDS
TOOL STORAGE

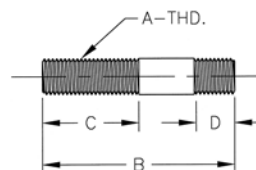
Call Us Or Visit Our Website For Our Complete Selection!

TOOLING COMPONENTS

DRIVER STUDS-VARIOUS LENGTHS

FEATURES:

- Black Oxide Finish
- Medium Carbon Steel
- Special lengths & sizes quoted upon request
- Metric studs also available



Thread A	B	C	D	Part Number	Price Each
1/4-20	1.50	0.88	0.38	TECO-40350	\$1.64
	2.00	1.00	0.38	TECO-40351	\$1.66
	2.50	1.00	0.38	TECO-40352	\$1.68
	3.00	1.50	0.38	TECO-40353	\$1.69
	4.00	1.75	0.38	TECO-40354	\$1.74
	5.00	1.75	0.38	TECO-40355	\$1.76
	6.00	2.00	0.38	TECO-40356	\$1.78
	7.00	2.00	0.38	TECO-40357	\$1.81
8.00	2.50	0.38	TECO-40358	\$1.85	

Thread A	B	C	D	Part Number	Price Each
3/8-16	1.50	0.63	0.63	TECO-40550	\$1.63
	2.00	1.00	0.63	TECO-40551	\$1.63
	3.00	1.50	0.63	TECO-40552	\$1.66
	4.00	1.50	0.63	TECO-40553	\$1.66
	5.00	1.75	0.63	TECO-40554	\$1.71
	6.00	2.00	0.63	TECO-40555	\$1.76
8.00	2.50	0.63	TECO-40556	\$1.89	

Thread A	B	C	D	Part Number	Price Each
1/2-13	10.0	3.00	0.75	TECO-40781	\$5.09
	12.0	3.00	0.75	TECO-40782	\$6.21

Thread A	B	C	D	Part Number	Price Each
5/16-18	1.50	0.75	0.50	TECO-40450	\$1.89
	2.00	1.00	0.50	TECO-40451	\$1.90
	2.50	1.00	0.50	TECO-40452	\$1.91
	3.00	1.50	0.50	TECO-40453	\$1.99
	4.00	1.50	0.50	TECO-40454	\$2.03
	5.00	1.75	0.50	TECO-40455	\$2.10
	6.00	2.00	0.50	TECO-40456	\$2.17
	7.00	2.00	0.50	TECO-40457	\$2.29
8.00	2.50	0.50	TECO-40458	\$2.36	

Thread A	B	C	D	Part Number	Price Each
1/2-13	1.50	0.63	0.63	TECO-40770	\$1.66
	2.00	1.00	0.63	TECO-40771	\$1.73
	3.00	1.50	0.75	TECO-40772	\$1.73
	4.00	1.50	0.75	TECO-40773	\$1.87
	5.00	1.75	0.75	TECO-40774	\$1.95
	5.50	1.75	0.75	TECO-40775	\$1.95
	6.00	2.00	0.75	TECO-40776	\$2.02
	6.50	2.00	0.75	TECO-40777	\$2.15
	7.00	2.00	0.75	TECO-40778	\$2.22
	8.00	2.50	0.75	TECO-40779	\$2.37
	9.00	2.50	0.75	TECO-40780	\$4.51

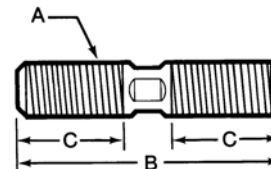
Thread A	B	C	D	Part Number	Price Each
5/8-11	2.00	1.00	0.63	TECO-40850	\$2.15
	2.50	1.00	0.88	TECO-40851	\$2.15
	3.00	1.50	0.88	TECO-40852	\$2.15
	4.00	1.75	0.88	TECO-40853	\$2.30
	5.00	1.75	0.88	TECO-40854	\$2.59
	5.50	2.00	0.88	TECO-40855	\$2.65
	6.00	2.00	0.88	TECO-40856	\$2.79
	6.50	2.00	0.88	TECO-40857	\$2.95
	7.00	2.00	0.88	TECO-40858	\$3.07
	8.00	2.50	0.88	TECO-40859	\$3.31
	9.00	2.50	0.88	TECO-40860	\$5.73
	10.0	2.50	0.88	TECO-40861	\$6.38
	12.0	3.00	0.88	TECO-40862	\$7.03
	14.0	3.00	0.88	TECO-40863	\$8.20

Please See Page 621 for more **TECO** Products

DRIVER STUDS

FEATURES:

- Black Oxide Finish
- Tensile Strength: 125,000 p.s.i. min
- Medium Carbon Steel
- Most studs have wrench flats.



Thread A	B	C	Flats	Part Number	Price Each
1/4-20	1-1/2	1/2	NO	TECO-40301	\$1.57
	2	3/4	NO	TECO-40302	\$1.59
	2-1/2	1	NO	TECO-40303	\$1.60
	3	1	NO	TECO-40304	\$1.61
	3-1/2	1	NO	TECO-40305	\$1.64
	4	1	NO	TECO-40306	\$1.68
	4-1/2	1	NO	TECO-40307	\$1.69
	5	1	NO	TECO-40308	\$1.70
	5-1/2	1	NO	TECO-40309	\$1.71
	6	1	NO	TECO-40310	\$1.73
	6-1/2	1	NO	TECO-40311	\$1.74
	7	1	NO	TECO-40312	\$1.75
	7-1/2	1	NO	TECO-40313	\$1.77
	8	1	NO	TECO-40314	\$1.78

Thread A	B	C	Flats	Part Number	Price Each
3/8-16	1-1/2	1/2	NO	TECO-40501	\$1.57
	2	3/4	NO	TECO-40502	\$1.56
	2-1/2	1	NO	TECO-40503	\$1.56
	3	1	YES	TECO-40504	\$1.56
	3-1/2	1-1/4	YES	TECO-40505	\$1.57
	4	1-1/4	YES	TECO-40506	\$1.59
	4-1/2	1-1/4	YES	TECO-40507	\$1.60
	5	1-1/4	YES	TECO-40508	\$1.64
	5-1/2	1-1/4	YES	TECO-40509	\$1.69
	6	1-1/4	YES	TECO-40510	\$1.70
	6-1/2	1-1/4	YES	TECO-40511	\$1.74
	7	1-1/4	YES	TECO-40512	\$1.75
	7-1/2	1-1/4	YES	TECO-40513	\$1.77
	8	1-1/4	YES	TECO-40514	\$1.80

Thread A	B	C	Flats	Part Number	Price Each
1/2-13	9	1-1/2	YES	TECO-40715	\$4.34
	10	1-1/2	YES	TECO-40716	\$4.90
	12	1-1/2	YES	TECO-40717	\$5.97
	14	1-1/2	YES	TECO-40718	\$6.62
	16	1-1/2	YES	TECO-40719	\$8.43

Thread A	B	C	Flats	Part Number	Price Each
5/16-18	1-1/2	1/2	NO	TECO-40401	\$1.81
	2	3/4	NO	TECO-40402	\$1.82
	2-1/2	1	NO	TECO-40403	\$1.83
	3	1-1/8	NO	TECO-40404	\$1.91
	3-1/2	1-1/8	NO	TECO-40405	\$1.94
	4	1-1/8	NO	TECO-40406	\$1.97
	4-1/2	1-1/8	NO	TECO-40407	\$1.99
	5	1-1/8	NO	TECO-40408	\$2.02
	5-1/2	1-1/8	NO	TECO-40409	\$2.05
	6	1-1/8	NO	TECO-40410	\$2.10
	6-1/2	1-1/8	NO	TECO-40411	\$2.16
	7	1-1/8	NO	TECO-40412	\$2.19
	7-1/2	1-1/8	NO	TECO-40413	\$2.23
	8	1-1/8	NO	TECO-40414	\$2.25

Thread A	B	C	Flats	Part Number	Price Each
1/2-13	1-1/2	1/2	NO	TECO-40701	\$1.59
	2	3/4	NO	TECO-40702	\$1.66
	2-1/2	1	NO	TECO-40703	\$1.59
	3	1	YES	TECO-40704	\$1.66
	3-1/2	1-1/4	YES	TECO-40705	\$1.73
	4	1-1/2	YES	TECO-40706	\$1.80
	4-1/2	1-1/2	YES	TECO-40707	\$1.80
	5	1-1/2	YES	TECO-40708	\$1.85
	5-1/2	1-1/2	YES	TECO-40709	\$1.85
	6	1-1/2	YES	TECO-40710	\$1.94
	6-1/2	1-1/2	YES	TECO-40711	\$2.08
	7	1-1/2	YES	TECO-40712	\$2.14
	7-1/2	1-1/2	YES	TECO-40713	\$2.21
	8	1-1/2	YES	TECO-40714	\$2.28

Thread A	B	C	Flats	Part Number	Price Each
5/8-11	1-1/2	1/2	NO	TECO-40801	\$2.21
	2	3/4	NO	TECO-40802	\$2.08
	2-1/2	1	NO	TECO-40803	\$2.01
	3	1	YES	TECO-40804	\$2.08
	3-1/2	1-1/4	YES	TECO-40805	\$2.21
	4	1-1/2	YES	TECO-40806	\$2.21
	4-1/2	1-3/4	YES	TECO-40807	\$2.36
	5	1-3/4	YES	TECO-40808	\$2.49
	5-1/2	1-3/4	YES	TECO-40809	\$2.55
	6	1-3/4	YES	TECO-40810	\$2.69
	6-1/2	1-3/4	YES	TECO-40811	\$2.83
	7	1-3/4	YES	TECO-40812	\$2.97
	7-1/2	1-3/4	YES	TECO-40813	\$3.19
	8	1-3/4	YES	TECO-40814	\$3.19
	9	1-3/4	YES	TECO-40815	\$5.51
	10	1-3/4	YES	TECO-40816	\$6.15
	12	1-3/4	YES	TECO-40817	\$6.79
	14	1-3/4	YES	TECO-40818	\$7.91
	16	1-3/4	YES	TECO-40819	\$9.02
	18	1-3/4	YES	TECO-40820	\$9.90
	20	1-3/4	YES	TECO-40821	\$11.13
	22	1-3/4	YES	TECO-40822	\$12.76
	24	1-3/4	YES	TECO-40823	\$13.76

Call Us Today For All Of Your Machine Tool Needs!

CHUCK JAWS
LATHE WORKHOLDING

MACHINE VISES
MAGNETIC CHUCKS

RETENTION KNOBS
ER, DA, TG COLLETS

TOOLHOLDERS
TAP HOLDERS

INDEXABLE DRILLS
TURNING & BORING

ENDMILLS, DRILLS
TAPS & REAMERS

ABRASIVES
MEASURING TOOLS

MRO & SAFETY
FLAT STOCK/DRILL ROD