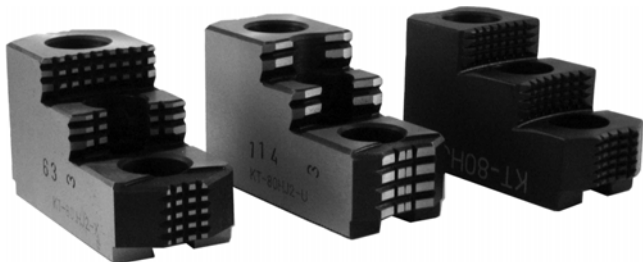


# HARD JAWS-1.5mm X 60° Serrations

**1.5mm x 60° Serration Hard Jaws**  
For Kitagawa, MMK, Strong & Howa Chucks



**FEATURES:**

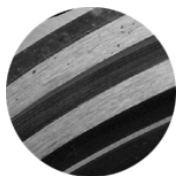
- Designed for first operation roughing, expect standard runout between **0.005-0.010**
- Reversible-suitable for OD & ID workholding.
- **GRIP-RITE**-OEM style hard jaws have ground tips and provide better runout.
- **XTRA BITE** -very aggressive bite. They have conical teeth for extra gripping power and ground body to provide improved runout.
- **SHARK JAWS** have conical teeth for extra gripping power and black oxide for long life. Ideal for castings! Made in the USA.
- 1 & 2 step jaws available.

**Need Help Finding The Correct Chuck Jaws? See Our "Easy Jaw Finder" On Pages 632-644**

We offer one of the largest selections of Hard Jaws in the USA. For your convenience, we offer 3 unique styles of hard jaws. Choose the best fit for your application!



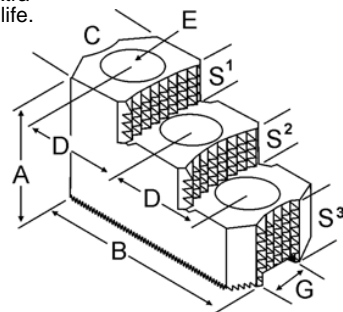
**XTRA BITE (-X)**  
Very aggressive grip, ground body and sides for improved runout.



**GRIP-RITE (-U)**  
OEM Style with ground tips and sides for improved runout.



**SHARK JAW**  
Conical teeth for gripping, black oxide for long life. Ideal for castings and scaly material. Made in the USA.



**Critical Dimensions**

Group Number	Chuck Size	Groove Width G	Screw Size E	Hole Space D	Width Inch C	OAL Inch B	Height Inch A	No. of Holes	No. of Steps	Top Step Ht S1	Mid Step Ht S2	Bot Step Ht S3	Part Number	Price Per Set	Style	Code
<b>K1-11-25</b>	<b>6</b>	<b>0.433 (11mm)</b>	<b>8mm</b>	<b>0.985 (25mm)</b>	1.250	3.000	1.969	3	2	0.500	0.500	0.969	<b>SG-60HJ2-X</b>	<b>\$285.00</b>	XTRA-BITE	E
<b>K1-12-20</b>	<b>6</b>	<b>0.472 (12mm)</b>	<b>10mm</b>	<b>0.787 (20mm)</b>	1.220	2.900	2.000	3	1	0.500	-	1.000	<b>KT-60HJ1</b>	<b>\$289.91</b>	Shark Jaws	D
BB-06, B-06, B-206, BT-06 & other 6" Kitagawa Chucks					1.220	2.646	1.423	3	1	0.359	-	1.064	<b>KT-60HJ1-U</b>	<b>\$252.94</b>	OEM Style	E
1.250					3.000	1.969	3	1	1.000	-	0.969	<b>KT-60HJ1-X</b>	<b>\$266.25</b>	XTRA-BITE	E	
1.220					2.900	2.000	3	2	0.500	0.500	1.000	<b>KT-60HJ2</b>	<b>\$289.91</b>	Shark Jaws	D	
1.220					2.728	1.740	3	2	0.402	0.402	0.936	<b>KT-60HJ2-U</b>	<b>\$252.94</b>	OEM Style	E	
1.250					3.000	1.969	3	2	0.500	0.500	0.969	<b>KT-60HJ2-X</b>	<b>\$266.25</b>	XTRA-BITE	E	
<b>K1-14-25</b>	<b>8</b>	<b>0.551 (14mm)</b>	<b>12mm</b>	<b>0.984 (25mm)</b>	1.500	3.300	2.000	3	1	0.500	-	1.000	<b>KT-80HJ1</b>	<b>\$343.00</b>	Shark Jaws	D
B-08, B-208, 8" Kitagawa Chucks					1.382	3.402	1.669	3	1	0.591	-	1.078	<b>KT-80HJ1-U</b>	<b>\$299.25</b>	OEM Style	E
MMK ZA6-8, HA6-8					1.500	3.500	1.969	3	1	1.030	-	0.938	<b>KT-80HJ1-X</b>	<b>\$315.00</b>	XTRA-BITE	E
1.250					3.000	2.000	3	2	0.500	0.500	1.000	<b>KT-80HJ2</b>	<b>\$343.00</b>	Shark Jaws	D	
1.382					3.409	2.000	3	2	0.465	0.465	1.070	<b>KT-80HJ2-U</b>	<b>\$299.25</b>	OEM Style	E	
<b>K1-16-25</b>	<b>8</b>	<b>0.630 (16mm)</b>	<b>12mm</b>	<b>0.984 (25mm)</b>	1.500	3.300	2.000	3	2	0.500	0.500	1.000	<b>HO-80HJ2</b>	<b>\$358.39</b>	Shark Jaws	D
<b>K1-16-30</b>	<b>10</b>	<b>0.630 (16mm)</b>	<b>12mm</b>	<b>1.181 (30mm)</b>	1.750	4.000	2.000	3	1	0.750	-	1.250	<b>KT-100HJ1</b>	<b>\$408.34</b>	Shark Jaws	D
B-10, B-210, BT-10/210					1.579	3.980	1.737	3	1	0.635	-	1.102	<b>KT-100HJ1-U</b>	<b>\$356.25</b>	OEM Style	E
HA6/8-10, ZA6-10, ZA8-10					1.750	4.250	2.469	3	1	1.250	-	1.219	<b>KT-100HJ1-X</b>	<b>\$375.00</b>	XTRA-BITE	E
1.750					4.000	2.500	3	2	0.650	0.500	1.350	<b>KT-100HJ2</b>	<b>\$408.34</b>	Shark Jaws	D	
1.579					3.980	2.130	3	2	0.520	0.520	1.090	<b>KT-100HJ2-U</b>	<b>\$332.50</b>	OEM Style	E	
1.750					4.250	2.469	3	2	0.650	0.650	1.169	<b>KT-100HJ2-X</b>	<b>\$375.00</b>	XTRA-BITE	E	
<b>K1-16-32</b>	<b>10</b>	<b>0.630 (16mm)</b>	<b>12mm</b>	<b>1.266 (32mm)</b>	1.500	4.125	2.000	3	2	0.650	0.500	1.350	<b>MT-100HJ2</b>	<b>\$396.79</b>	Shark Jaws	D
<b>K1-18-30</b>	<b>12</b>	<b>0.709 (18mm)</b>	<b>14mm</b>	<b>1.181 (30mm)</b>	1.750	4.600	2.000	3	1	0.750	-	1.250	<b>KT-120HJ1</b>	<b>\$441.00</b>	Shark Jaws	D
B-12, BT-12, HA8-12, MMK-12, ZA8-12					1.969	4.091	2.051	3	1	0.669	-	1.382	<b>KT-120HJ1-U</b>	<b>\$384.75</b>	OEM Style	E
1.750					4.600	2.500	3	1	1.300	-	1.168	<b>KT-120HJ1-X</b>	<b>\$405.00</b>	XTRA-BITE	E	
1.750					4.600	2.500	3	2	0.650	0.500	1.350	<b>KT-120HJ2</b>	<b>\$441.00</b>	Shark Jaws	D	
2.000					4.042	2.480	3	2	0.543	0.442	1.495	<b>KT-120HJ2-U</b>	<b>\$384.75</b>	OEM Style	E	
2.000					4.875	2.469	3	2	0.650	0.650	1.169	<b>KT-120HJ2-X</b>	<b>\$405.00</b>	XTRA-BITE	E	
<b>K1-21-30</b>	<b>12</b>	<b>0.827 (21mm)</b>	<b>16mm</b>	<b>1.181 (30mm)</b>	1.750	4.600	2.500	3	2	0.650	0.500	1.350	<b>KT-128HJ2</b>	<b>\$441.00</b>	Shark Jaws	D
B-212, BT-212					2.000	4.042	2.480	3	2	0.543	0.442	1.495	<b>KT-128HJ2-U</b>	<b>\$384.75</b>	OEM Style	E
2.000					4.875	2.469	3	2	0.650	0.650	1.169	<b>KT-128HJ2-X</b>	<b>\$405.00</b>	XTRA-BITE	E	
<b>K1-22-43</b>	<b>15 &amp; 18</b>	<b>0.866 (22mm)</b>	<b>20mm</b>	<b>1.693 (43mm)</b>	2.500	5.400	3.000	3	2	0.730	0.730	1.540	<b>KT-150HJ2</b>	<b>\$571.66</b>	Shark Jaws	D
B-15, B-18, BT-15					2.448	5.850	3.385	3	2	0.827	0.827	1.731	<b>KT-150HJ2-U</b>	<b>\$498.75</b>	OEM Style	E
2.500					5.500	3.500	3	2	0.950	0.950	1.600	<b>KT-150HJ2-X</b>	<b>\$525.00</b>	XTRA-BITE	E	
<b>K1-26-43</b>	<b>15 &amp; 18</b>	<b>1.005 (25.5mm)</b>	<b>20mm</b>	<b>1.693 (43mm)</b>	1.690	2.500	5.400	3	2	0.730	0.730	1.540	<b>KT-151HJ2</b>	<b>\$571.66</b>	Shark Jaws	D
B-215, N18, N15					1.693	2.448	5.850	3	2	0.827	0.827	1.731	<b>KT-151HJ2-U</b>	<b>\$498.75</b>	OEM Style	E
2.500					5.500	3.500	3	2	0.950	0.950	1.600	<b>KT-151HJ2-X</b>	<b>\$525.00</b>	XTRA-BITE	E	

**Call Us Today For All Of Your Machine Tool Needs!**

**2010-11 Master Catalog**