

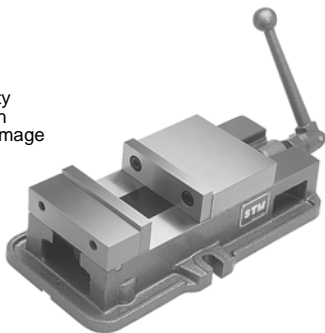
CHUCK JAWS
LATHE WORKHOLDING

MACHINE VISES

6" MACHINE VISES

FEATURES:

- GS-750 features a 7.5" opening
- GS-890 features an 8.9" opening
- 4 jaw plate positions allow extra capacity with the jaw plates in the outside position
- Chip cover protects lead screw from damage
- Compatible with standard vise jaws
- Swivel base is graduated 360° in one degree increments



Vise Size	Vise Opening	Part Number	Price Each
6"	7.5"	SOWA-327-275	\$313.95
	8.9"	SOWA-327-290	\$413.82
Swivel Base		SOWA-327-280	\$99.00

A

MACHINE VISES
MAGNETIC CHUCKS

RETENTION KNOBS
ER, DA, TG COLLETS

TOOLHOLDERS
TAP HOLDERS

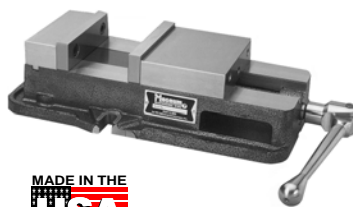
INDEXABLE DRILLS
TURNING & BORING

ENDMILLS, DRILLS
TAPS & REAMERS

ABRASIVES
MEASURING TOOLS

MRO & SAFETY
FLAT STOCK/DRILL ROD

MACHINE VISES



FEATURES:

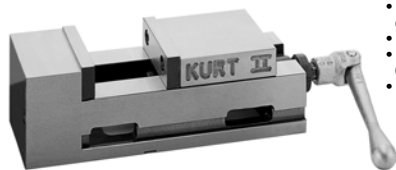
- Non-lifting moveable jaw design.
- 6" (152mm) jaw width.
- Bed Height is 2.875" within +/- .0005".
- Supplied with a removable chip shield.
- Stress relieved iron vise body.
- All machined surfaces are square and parallel within .001" (.025mm).
- 80 lb. shipping weight.



Lifetime Warranty On Workmanship!

Vise Size	Vise Opening	Part Number	Price Each
5"	5"	CON-EV1110	\$473.33
6"	8"	CON-EV1010	\$423.00
Swivel Base		CON-VI-EV1012	\$280.00
Handle (complete)		CON-VIEV1050	\$84.00

ANGLOCK® PT-SERIES VISES



- Up to 20,000lbs precision clamping force
- CNC style allows compact spacing
- Both sides ground square to within 0.001" with base and top
- 80,000-PSI ductile iron body



The AngLock® PT Series vises offer high precision function through these important design features: The original, time-proven Kurt AngLock design prevents parts from lifting upward under heavy clamping loads. The "pull-type" jaw clamping reduces stationary jaw deflection by at least 80% as the movable jaw is "pulled" into the stationary jaw and not pushed like standard screw type vises.

Jaw Width	Jaw Opening	Approx. Weight	Part Number	Price Each
4-3/32"	4"	32 lbs	KURT-PT400A	\$1,230.05
8-5/32"	7-3/8"	159 lbs	KURT-PT800A	\$1,885.55

HEAVY DUTY PRECISION MILLING VISES

- Precision ground to accuracy
- Full 360° swivel base with graduation is included
- Used for milling, shaping and drilling
- Angle lock style jaws are interchangeable with industry standard vises
- Matched pair within 0.001" on bed height



Swivel Base Included!

Jaw Width	Jaw Opening	Approx. Weight	Part Number	Price Each
4"	4"	50 lbs	A-3900-2102	\$149.00
6"	8"	99 lbs	A-3900-2103	\$199.00
8"	8"	189 lbs	A-3900-2105	\$359.00

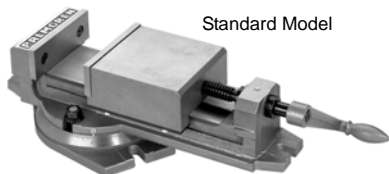
B

MILLING VISES

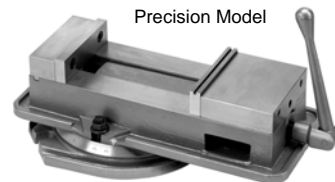
A tough vise used for milling and other demanding machine applications. Replaceable smooth jaw plates made of hardened and ground tool steel. Included base swivels 360° (1° graduations) and can be fastened in place with two bolts.

Precision Milling Vise:

- 9" extra-wide jaw opening.
- Vise body is made of high strength ductile iron.
- Includes: thrust bearing for increased clamping power; a locking design that provides 1/2 lb. of vertical clamping pressure for every 1 lb. of horizontal pressure
- Built in coolant trough
- Accepts popular jaw and crank handle accessories.



Standard Model



Precision Model



Standard Milling Vise

Model	Vise Size	Jaw Opening	Jaw Depth	Base Size	Height	Ship Wgt.	Part Number	Price
MVS40	4"	4"	1-1/2"	7-3/4 x 5-3/4"	4-9/16"	33 lbs	PALM-25404	\$150.45
MVS60	6"	6"	2"	11-1/2 x 8-7/16"	6"	82 lbs	PALM-26603	\$301.75

Precision Milling Vise

MPS60	6"	9"	1-3/4"	12-3/4 x 11-3/4"	6-1/4"	113 lbs	PALM-26604	\$426.70
-------	----	----	--------	------------------	--------	---------	------------	----------

B

SWIVEL BASE

For Kurt Anglock type vises. Allows positioning in increments of 1°.



D688 vise shown mounted on D60-4-SA swivel base



Nominal Size	Vise Model	Part Number	Price Each
4"	KURT-D40	KURT-D40-4-SA	\$399.30
6"	KURT-D675	KURT-D60-4-SA	\$243.40
	KURT-D688		
8"	KURT-D810	KURT-D80-4-SA	\$629.20

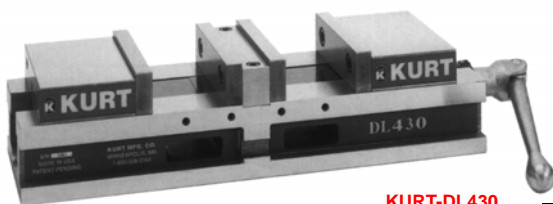
Call Us Today For All Of Your Machine Tool Needs!

2010-11 Master Catalog

MACHINE VISES

A

KURT DOUBLELOCK® DL SERIES



KURT-DL430

Uses the same machine table space as conventional vises with 2 clamping stations for CNC Machines!

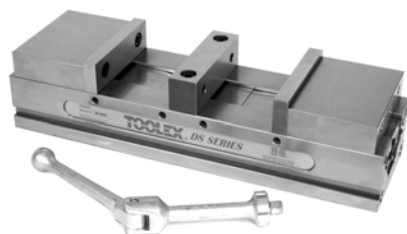
FEATURES:

- Up to 12,600 Lbs. precision clamping force per jaw set.
- Repetitively locates similar or dissimilar parts to within .0002"
- Body height matched to within ±.001"
- Mounts flat and square in multiples.
- 80,000 PSI ductile iron body, bed hardened to Rc45 minimum.
- Design eliminates clamping deflection.
- Reduces the total number of tool changes by 50%.



Vise Size	Vise Opening	Jaw Height	Vise Height	OAL	Part Number	Price Each
4"	3"	1.235"	2.375"	17.47"	KURT-DL430	\$965.00

DOUBLE STATION MACHINE VISES



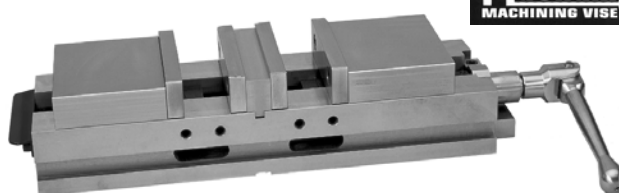
TOOLEX®

NEW ITEM!

- Body manufactured from 80,000 PSI ductile cast iron
- Ways are flame hardened to 40 R/C maximum
- Vise Capacity – 4" jaw opening per side
- Jaw mounting and indexing to accuracies of ±.0005
- Includes manual off-set mechanism that has maximum .250" offset setting
- Standard Hard Jaw Set made of 1018 steel
- Carrier jaws will accept both AccuSnap and QuickChange master jaws

Vise Size	Bed Height	OAL	Vise Opening	Part Number	Price Each
6"	3.1250	20.50	4"	TECO-DS6000	\$1,255.00

DOUBLE STATION MACHINE VISES



FEATURES:

- 6" Jaw opening
- Bed height of 3.125"
- 2 Jaw openings! 4" x 6" each
- Lifetime Warranty

Double Station Vise
6" Jaw Width, 4" Opening
Part # CON-EVI210

\$1,066.67

*Double The Number Of Parts Per Run!
Twice As Many Stations With One Vise!*

KURT VERSATILE LOCK® SERIES

The Versatile Lock vise is the industry's ultimate single station CNC vise. It offers ultra-precision function through these important design features: The original, time proven Kurt AngLock design prevents parts from lifting upward under heavy clamping loads. The "pull-type" jaw clamping reduces jaw stationary deflection by at least 80%. One piece vise body and stationary jaw provide greater strength while reducing weight.

FEATURES:

- Can be mounted upright or on either side.
- Matched stationary jaw to keyway including the body height ±0.001".
- 0.0005" clamping repeatability.
- Footprint on the short version is 13". Ideal for the smallest machines.
- Hydraulic option is available as a complete package including the intensifier (specify foot or hand actuation).
- All air and hydraulic units feature a 1/4" vise stroke.
- Air vise has a precise and repeatable "gentle touch" for delicate parts.



3600H-Standard Hydraulic



3600A-Standard Air



Standard 3600V Vise

Vise Size	Vise Opening	OAL	Part Number	Price Each
6"	6"	15.060"	KURT-3600V	\$670.00

Standard Hydraulic Vise

6"	6"	15.060"	KURT-3600H*	\$1,466.40
----	----	---------	-------------	------------

Standard Air Vise

6"	6"	15.060"	KURT-3600A	\$2,132.00
----	----	---------	------------	------------

*Hydraulic vise requires intensifier package

HYDRAULIC INTENSIFIERS

For 3600 Series Vises

This power source simply converts air pressure to useable hydraulic pressure. A compressed air source is needed along with a filter, regulator and lubricator unit (not included) to control clamping forces. Each vise requires an intensifier. Intensifier must be mounted same level or above the vise.

- Air oil pressure ratio 40:1.
- 2.400 cubic inches usable hydraulic oil.
- 1/4 NPT outlet fitting.
- Liquid fill hydraulic sight tube.
- For use with 4" and 6" and 8XL series vises.
- Hand or foot operated.

Air PSI	Hydraulic PSI
30	1200
40	1600
50	2000
60	2400
70	2800
80	3200
Do Not Exceed 80 PSI Air	



Hydraulic Intensifier
Foot Operated
Part # KURT-APD50-112FT
\$1,875.00

Hydraulic Intensifier
Hand Operated
Part # KURT-APD50-112HA
\$1,631.00

Seal Kit
Part # KURT-APD50-112KT
\$53.00

Call Us Or Visit Our Website For Our Complete Selection!

2010-11 Master Catalog

125

LATHE CHUCKS
LIVE CENTERS

VISE ACCESSORIES
VISE JAWS

STRAIGHT SHANK
COLLET HOLDERS

LATHE BUSHINGS
DRILL CHUCKS

CARBIDE INSERTS
THREADING/GROOVING

CUTTING TOOLS
MACHINERY

PRECISION TOOLS
DEBURRING

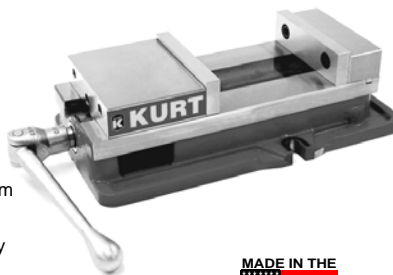
COOLANT/FLUIDS
TOOL STORAGE



KURT ANGLOCK® D-SERIES VISES

The original Kurt Anglock® D-Series vises are designed for precision part clamping on basic machine tools such as knee-type mills, grinders and machining centers. D-Series vises are ideal for use in running production parts where datums, flatness and parallelism is important.

You can precision bore, tap, drill, grind and finish with high accuracy on most parts made of die cast aluminum, steel, and iron in your Kurt Anglock vises. No other brand can give you the time proven accuracy of the Kurt Anglock vises. All Kurt vises have a friction reducing, needle bearing, thrust collar. In addition, the needle bearing increases jaw clamping pressure.



All KURT AngLock® D-Series Vises Include:

- AngLock design assures the movable jaw does not lift
- Hardened vise bed
- Hardened jaw plates
- Semi-hard steel screw
- 80,000-PSI ductile iron body
- Matching of bed height +/-0.001" available at an additional cost for D40 and D100 models

MODEL D-675



- Powder coat paint resists peeling
- Machined rail allows for precision alignment
- **7-1/2" jaw opening**
- Stationary jaw features an integral key and larger fasteners that reduces deflection by 50%.
- Bed height matched to size 2.875" (73.025mm) ±0.0005". Patented "O" ring pull down feature is standard

D-675 Vise
6" Jaw Width, 78 lbs
Part # KURT-D675
\$414.00

MODEL D-688



D-688 Vise
6" Jaw Width, 78 lbs
Part # KURT-D688
\$483.00

- **Large 8.8" jaw opening**
- Outside rail edges of the body are machined.
- Vise nut does not extend beyond the end of the vise body
- D688 has the same footprint as the D675
- Groove Lock jaw (D60-315) and workstop (WSRL46) standard
- Patented "O" ring pull down feature standard
- Approximately a 20% increase in clamping pressure over D675 vise
- Bed height matched to size 2.875" (73.025 mm) ±0.0005"
- Repeatability within 0.001"
- Sealed needle thrust bearing used at hex end of screw to reduce clamping friction

MODEL D-810

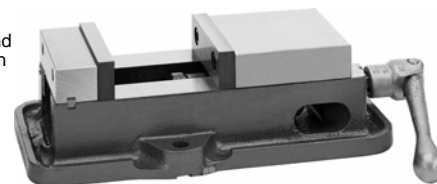
- Top down, four bolt design on the stationary jaw reduces vise deflection by 25 percent while allowing total disassembly of the vise without removing the body from the machine table. Special brush seals shield and protect vise screw threads from machined chips and residue
- The nut has been shortened so as not to protrude past the end of the vise body. New powder coat paint finish resists coolant-induced peeling for greater corrosion protection
- With a jaw opening of 10" and clamping force up to 11,600 lbs., the D810 vise locks parts precisely including very large parts for aggressive "hogging out" operations



D-810 Vise
8" Jaw Width, 160 lbs
Part # KURT-D810
\$1,526.80

MODEL D-100

The D100 is the largest and strongest of Kurt's general purpose vises. With 9-3/4" jaw opening, it has the capacity and strength to take on your highest horsepower milling cuts. It's the most precise and rugged 10" production vise in the world.



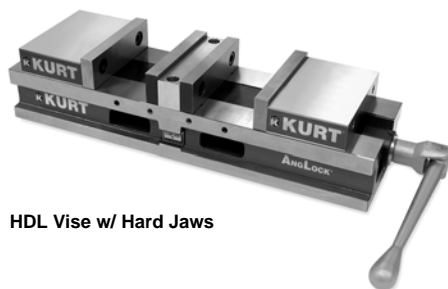
D-100 Vise
10" Jaw Width, 300 lbs
Part # KURT-D100
\$2,542.80

9-3/4" Jaw Opening!



KURT HDL ANGLOCK® SERIES

HDL Anglock Vises are high density long vises with two clamping stations which are either manually or hydraulically actuated. They provide repeatable clamping to 0.001 inch. They combine high density with heavy duty features. Designed on a rugged 80,000PSI ductile iron body with steel components, both models provide strength, rigidity and long term accuracy while absorbing machining vibration.



HDL Vise w/ Hard Jaws

FEATURES:

- Available with aluminum, cast or hard jaws.
- 2 Clamping stations-repeatable clamping to 0.001"
- Standard hard jaw system allows full 4" opening in each station
- Maximizes the number of parts in work envelope.
- Adjustable pre-load feature allows you to minimize pre-load range, thus reducing turns of the handle to open or close vise.
- Hydraulic models also available
- Lifetime Iron Clad™ Warranty



HDL Vise w/ Aluminum Jaw Kit



Description	Jaw Width	Opening	Weight	Part Number	Price
HDL Anglock Vise w/ Hard Jaw Kit	6"	4"	110 lbs	KURT-HDLM6J	\$1669.00
HDL Anglock Vise w/out Jaws	6"	4"	71 lbs	KURT-HDLM6	\$1,490.00

Conversion Kits

1.73" High Jaw Kit- Aluminum	6"	4"	12 lbs	KURT-HD6AL-JAWKIT	\$210.55
1.73" High Jaw Kit-Cast Iron	6"	4"	39 lbs	KURT-HD6C-JAWKIT	\$253.85
Hard Jaw Kit	6"	6"	26 lbs	KURT-HDLM6J-CONVKIT	\$118.60

Call Us Today For All Of Your Machine Tool Needs!