

5C HORIZONTAL/VERTICAL COLLET HOLDER



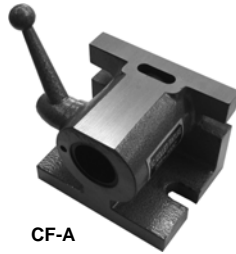
NEW ITEM!

- Dimensions: Base 5" x 3-5/8", 3-3/4" height
- Universally adaptable to drill presses, milling machines and surface grinders
- Collet does not move up or down, it retains positive relation to base
- Can be adjusted or changed without disturbing set-up
- Cam lever opens and closes easily so collets can be changed quickly
- Utilizes a cam lock and positive release



5C Horizontal/Vertical Collet Holder
Part # PH2-225-202
\$61.75 each

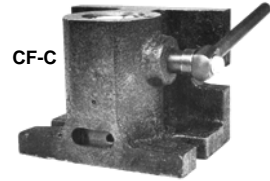
5C HORIZONTAL & VERTICAL COLLET FIXTURE



CF-A

FEATURES:

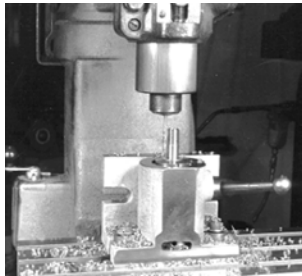
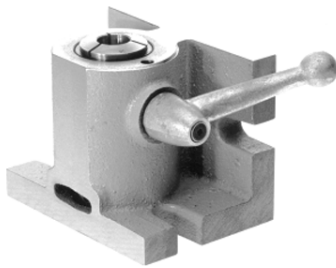
- For any standard 5C collet up to 1-1/8"
- Can be used in either horizontal or vertical position
- Lever movement to open or close collet



CF-C

Base Size	Height	Part Number	Price Each
4-1/4" x 4-1/4"	4-1/4"	CF-A	\$49.00
5" x 4"	3-3/4"	CF-C	\$56.00

5C COLLET FIXTURE



An indispensable fixture with cam-operated sleeve for opening and closing 5C collets. The collet remains in a fixed position for positive depth control. Spring-loaded handle can be indexed to any desired position for ease of operation while mounted vertically or horizontally.

Size	Cap.	Part Number	Price
5" L x 3-3/4" W x 4" H	1-1/16"	AI-210-5C	\$189.43

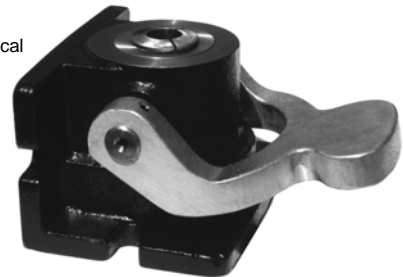
5C COLLET HOLDING FIXTURE



FEATURES:

- Holds 5C collets dead length
- Hardened and ground spindle heavy casting
- Two position-horizontal & vertical
- Lever close
- Made in the USA

Dimensions:
4" H x 6" L x 4.5" W



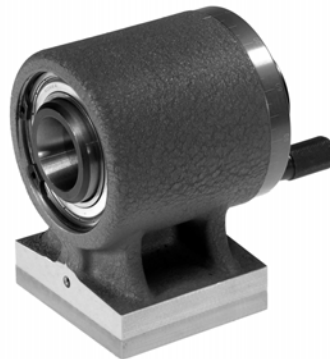
Description	Weight	Part Number	Price
Vertical/Horizontal 5C Holding Fixture	18 lbs	KAL-10C	\$215.00

COLLET-MASTER™ INDEX FIXTURE

- Base is hardened & ground, held square and parallel to spindle within 0.0002"
- 48 position index plate provides a hard stop every 7-1/2° +/-45 arc seconds
- Spindle rides in two sealed, pre-loaded ball bearings.
- Maximum spindle runout is 0.0001".
- Drawbar and fitted wooden case included.
- Optional faceplate & v-block (CM-5C-FVB) available for eccentric forms.

Center Height	OAL	Indexing Accuracy	WT (lbs)	Part Number	Price
3-5/8"	6-1/2"	45 Sec.	9	SUB-CM-5C	\$995.00

Description	Faceplate Dia	V-Block Capacity	WT (lbs)	Part Number	Price
Optional Faceplate	6-1/2"	45 Sec.	15	SUB-CM-5C-FVB	\$469.00



NEW ITEM!



SUB-CM-5C-FVB

SPIN-MASTER™ INDEX FIXTURE

- Uses standard 5C collets.
- 2-5/16" spindle travel for flute grinding.
- Runout on hardened and ground spindle is 0.0005" T.I.R.
- 3-7/8" x 4-5/32" base ground parallel to spindle.
- Sides of base ground parallel to spindle axis.
- Index plate with 36 holes for direct indexing in 10° steps and is marked in 5° increments.
- 10 vernier holes provide 1° indexing.

NEW ITEM!



Center Height	Collet Capacity	Thru-Hole	WT (lbs)	Part Number	Price
2-3/4"	ALL 5C	1-1/4"	15	SUB-SM-5C	\$668.00

LATHE CHUCKS
LIVE CENTERS

VICE JAWS
VICE ACCESSORIES

STRAIGHT SHANK
COLLET HOLDERS

LATHE BUSHINGS
DRILL CHUCKS

CARBIDE INSERTS
THREADING/GROOVING

CUTTING TOOLS
MACHINERY

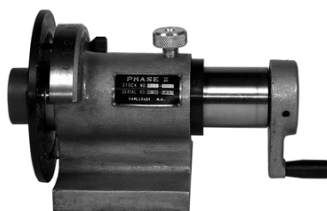
PRECISION TOOLS
DEBURRING

COOLANT/FLUIDS
TOOL STORAGE

Call Us Or Visit Our Website For Our Complete Selection!

5C SPIN INDEX

- Hardened and precision ground spindle
- 0.0004" TIR spindle accuracy
- Precision ground 36-position index plate
- Direct indexing in ten steps, graduated in 5° increments
- For use on all milling machines, surface grinders and inspection equipment
- Approximate weight: 18lbs



NEW ITEM!

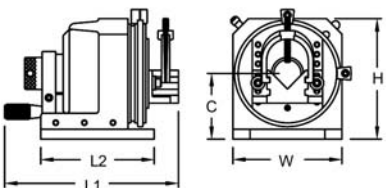
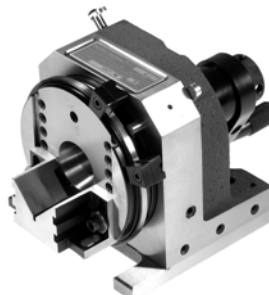


5C Spin Index
Part # PH2-225-204
\$75.05 each

MASTER-GRIND™ FIXTURE

- V-Block and 5C collet in one fixture.
- 72 position index plate provides a hard stop every 5° ±15 arc seconds.
- Built in sine bar for setting angles between hard index locations.
- Horizontal or vertical v-block mounting
- Spindle runs in two heavy duty 4" diameter tapered roller bearings.
- Maximum spindle runout of 0.00005".
- Fitted wooden case included.

NEW ITEM!



V-block Capacity	Collet Capacity	Thru-Hole	Center Ht. C	Height H	Length L1	Length L2	Width W	Part Number	Price
1-5/8"	ALL 5C	1-1/4"	3"	5-1/2"	8-15/16"	5-3/16"	5"	SUB-MG5-CV-S1	\$2,185.00

5C HORIZONTAL/VERTICAL COLLET INDEX

- For use with 5C collets
- Patented single lever action activates the indexing mechanism
- Precision ground index plate has 24 indexing locations in 15° increments, any of which can be masked for greater versatility
- Spindle accuracy 0.0004"
- Approximate weight: 35 lbs
- Spindle is 2-1/4-8TPI

NEW ITEM!



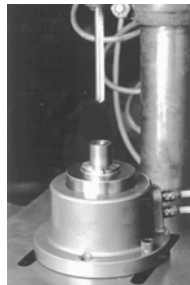
5C Horizontal/Vertical Collet Index
Part # PH2-225-205
\$270.75 each

Optional Tailstock
Part # PH2-240-003
\$132.05 each

- Optional Tailstock:**
- Center Height: Min. 3", Max. 4-1/2"
 - Tilt angle: =+/- 11°

Specifications	Max. Variaton
Dividing spindle concentricity	0.0004"
Cylinder center bore (per 1") concentricity	0.0004"
Lateral offset of center slot of dividing spindle	0.0004"
Center slot to dividing spindle concentricity	0.0004"
Spindle Center Line parallelism	0.0004"
Base to face squareness	0.0004"

5C AIR COLLET FIXTURE



For use with standard 5C Collets. Designed especially for high production applications. Their light weight and compact size permits the use of several units on indexing tables for custom applications or used individually for fast chucking of parts on milling machines and drill press.

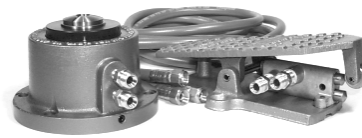
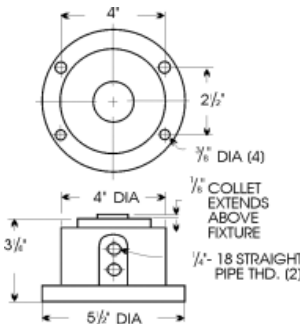
Air operation is double acting for "Power" opening and closing of collet. The collet is locked into position for positive depth location of work. These units operate efficiently and effectively on air pressure up to 150 PSI with upward clamping pressure exceeding 7.5 times line pressure. All bearings and moving parts are hardened and precision ground for accuracy and long life.



5C AIR COLLET FIXTURE KITS

The foot operated 4-way air valve provides "hands free" operation of the Air Collet Fixture. The valve locks in place in either clamped or unclamped position without need for constant foot pressure.

- Kit includes:**
- Standard 5C Air Collet Fixture
 - 4-way Foot Valve
 - Three (3) Air Hoses.



Base Size	Cap.	Part Number	Price Each
Air Collet Fixture	1-1/16"	AI-212-5C	\$217.27
Air Collet Fixture Kit	1-1/16"	AI-212-5C-K	\$345.90

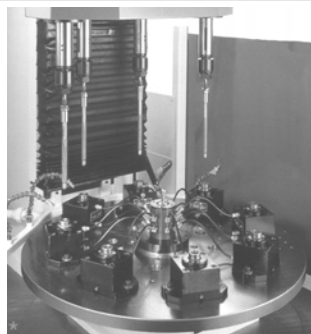
Call Us Today For All Of Your Machine Tool Needs!

COLLET CLOSERS

B

COLLET WORKHOLDING SYSTEMS

Double acting for positive operation and actuated by pneumatic or hydraulic pressure, the collet systems can be used as either a single unit or in multiples. They are constructed of aluminum or steel and can be configured for vertical or horizontal machining center applications. Custom design of a turnkey collet workholding system is also available for your small part workholding applications.



LATHE CHUCKS
LIVE CENTERS

VISE JAWS
VISE ACCESSORIES

5C AIR COLLET CLOSERS

A stationary air collet closer for use on all machine and assembly operations. Can be used as a single unit or mounted on rotary tables or pallets for multiple machining operations. Because of its compact size, model 65101 collet closers can be grouped for the smallest possible space between centers, using tapped holes in the base for mounting. Precision machined out of solid aircraft quality aluminum with hardened tool steel bushings.



LEX-65102
4" X 4" X 4.5"H

FEATURES:

- Uses standard 5C collets.
- Down acting clamping feature.
- Operates with 4-way valve.
- Thru hole for long stock.
- Unit comes complete with collet wrench.

Type	Capacities			Part Number	Price Each
	Round	Square	Hexagon		
5C Collets	1/64-1-1/16	1/8-3/4	1/8-7/8	LEX-65101	\$340.00
Down Acting				LEX-65102	\$340.00
Operating Pressure- Air: 150 PSI Maximum			Draw Tube Force: 7.5 X Line Pressure		

STRAIGHT SHANK
COLLET HOLDERS

5C AIR/HYDRAULIC COLLET CLOSER

A stationary 5C collet closer for use on any workholding application requiring higher clamping forces. Model 65201 features dead length collet clamping for your more demanding jobs. Can be used as a single unit or used in multiple configurations utilizing a connector bushing to simplify your plumbing arrangements. This model can be activated by air or hydraulic pressure if more clamping force is required.



LEX-65201
4" X 4" X 3.85"H

FEATURES:

- Uses standard 5C collets, dead length
- Dead length collet feature.
- Accurate repeatability.
- Reamed orientation holes in base for alignment.
- Unit comes complete with collet wrench.

Type	Capacities			Part Number	Price Each
	Round	Square	Hexagon		
5C Collets	1/64 -1-1/16	1/8-3/4	1/8-7/8	LEX-65205	\$475.00

Specifications	
Operating Pressure- Air	150 PSI Maximum
Hydraulic	750 PSI Maximum
Draw Tube Force	7.5 X Line Pressure

LATHE BUSHINGS
DRILL CHUCKS

CARBIDE INSERTS
THREADING/GROOVING

16C HYDRAULIC COLLET CLOSER

A stationary hydraulic 16C collet closer for use on larger part applications where high clamping force is necessary. Model 65202 features dead length collet clamping for the most demanding jobs. Uses standard 16C collets up to 1 5/8 diameter or machine your own shape in collet blanks for flexible clamping ability. Precision machined out of solid aircraft quality aluminum with hardened tool steel bushings.



LEX-65202
4" X 4" X 4.57"H

FEATURES:

- Uses standard 16C collets, dead length
- Dead length collet feature.
- Accurate repeatability.
- Reamed orientation holes in base for alignment.
- Unit comes complete with collet wrench.

Type	Capacities			Part Number	Price Each
	Round	Square	Hexagon		
16C Collets	1/16 -1-5/8	1/4 -1-1/8	1/4 -1-3/8	LEX-65202	\$575.00

Specifications	
Operating Pressure-Hydraulic	2000 PSI Maximum
Draw Tube Force	5.8 X Line Pressure

CUTTING TOOLS
MACHINERY

PRECISION TOOLS
DEBURRING

ACCESSORIES



Full Line Available!
Please call for more information.

Description	Part Number	Price
Electric Hydraulic pump	LEX-65-0031	CALL
Air Actuated Hydraulic Pumps	LEX-65-0033	CALL
Hydraulic Valve, 2-Position, 4-	LEX-65-0029	\$350.00
Pneumatic Valve	LEX-M3841516	\$113.00
Connector Bushing	LEX-02-1082	\$8.00
Exhaust Muffler	LEX-02-1072	\$3.25
Male Connector	LEX-02-1073	\$3.85
Swivel Elbow	LEX-02-1074	\$5.35
Male Swivel "T"	LEX-02-1075	\$6.75

AIR COLLET CLOSERS



B



For 5C, 2J, 16C
& 3J Collets

We offer high quality 5C, 2J, 16C and 3J air collet closers. The collet closer and collet actuator are used with lathes, grinders, and CNC rotary tables, and are rated for up to 6000 RPM maximum. Closer collets are frequently used on 50m precision spindle, high speed cartridge spindle and spindle headstock products as well as Hardinge lathes and other lathes and grinders.

FEATURES:

- Standard, high speed, and high pressure
- Operation to 6,000 rpm based on model
- Reduced operator fatigue means increased production
- Activates 2J, 3J, 16C & 5C collets, expanding collets, and step chucks
- Thru hole capacity 1 1/16" (5C) to 1 3/4" (3J)
- Concentricity adjustability

**Please Call For
More Information!**

COOLANT/FLUIDS
TOOL STORAGE

Call Us Or Visit Our Website For Our Complete Selection!

2010-11 Master Catalog

141