

MAGNETIC CHUCKS

MAGNETIC CHUCKS RECTANGULAR & CIRCULAR



Features:

- Brass and steel top plates.
- Removable hexagon key handles ensure ease of operation through a 180 degree arc.
- All chucks are supplied with side and end stops.
- All chucks are supplied with clamps.



Standard Range

Standard Range chucks give high performance at a competitive price. High energy rare earth permanent magnets give an evenly distributed clamping force. Trouble-free operation is assured with a rugged, accurate build.



W	L	Ht.	Wt.	Standard Pole		Fine Pole	
				Part Number	Price Each	Part Number	Price Each
3.94	7.09	1.96	17.6	ECL-ERSP1018	\$305.79	ECL-ERFP1018	\$325.08
5.12	9.84	1.96	30.8	ECL-ERSP1325	\$427.05	ECL-ERFP1325	\$456.74
5.90	11.81	1.96	40.7	ECL-ERSP1530	\$562.59	ECL-ERFP1530	\$606.22
5.90	13.71	1.96	47.3	ECL-ERSP1535	\$703.57	ECL-ERFP1535	\$745.75
5.90	17.72	1.96	60.5	ECL-ERSP1545	\$821.16	ECL-ERFP1545	\$882.91



Circular Chucks
Force: 80N/cm2

Pole Spacing:

Standard Pole
4.0mm/0.0157" steel
2.0mm/0.079" brass

Fine Pole
1.5mm/0.060" steel
0.5mm/0.020 brass

Dia.	Ht.	Wt.	Standard Pole		Fine Pole	
			Part Number	Price Each	Part Number	Price Each
3.94	1.96	6.60	ECL-ECSP100	\$253.97	ECL-ECFP100	\$264.07
4.92	1.96	11.0	ECL-ECSP125	\$305.48	ECL-ECFP125	\$331.46
6.30	1.96	16.5	ECL-ECSP160	\$432.54	ECL-ECFP160	\$452.88
7.68	1.96	24.2	ECL-ECSP195	\$549.22	ECL-ECFP195	\$634.87
10.00	1.96	35.2	ECL-ECSP255	\$874.84	ECL-ECFP255	\$1,011.30
12.20	1.96	52.8	ECL-ECSP310	\$1,282.50	ECL-ECFP310	\$1,378.26
13.77	1.96	59.4	ECL-ECSP350	\$1,448.75	ECL-ECFP350	\$1,648.82

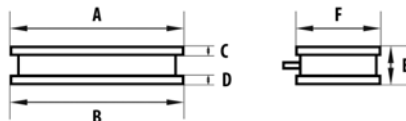
PREMIUM RANGE MAGNETIC CHUCKS

Eclipse Magnetix invented the first permanent magnet chuck in 1934 and we continue to set the benchmark for quality workholding with today's Premier Range.



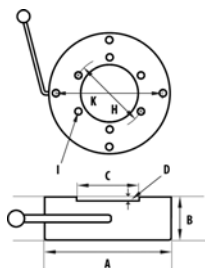
Features:

- The all-metal top plate is extra thick to ensure maximum accuracy after frequent re-grinding.
- Chrome plated side and end stops for packing and positioning.
- The chucks can be partially magnetised to allow part positioning in set up.
- Removable, ergonomically designed handles allow easy switching.
- Comes with a 3-year guarantee against faulty workmanship and materials.
- Supplied with clamps.



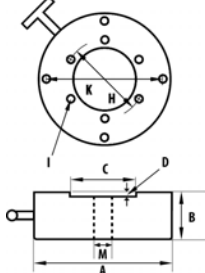
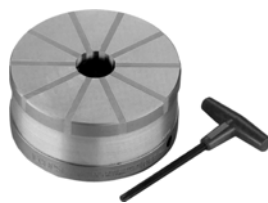
Rectangular Premium Range Chucks

A	B	C	D	E	F	Pole Pitch	Part Number	Price Each
7.00	7.99	0.393	0.354	1.58	5.00	1.378	ECL-AX47P	\$553.72
10.15	10.87	0.748	0.551	2.09	5.08	1.378	ECL-AX510P	\$643.92
12.20	12.68	0.748	0.748	2.56	5.95	1.26	ECL-AXS612P	\$879.16
13.81	14.17	0.748	0.748	2.56	5.95	1.26	ECL-AXS614P	\$921.02
17.76	17.76	0.748	0.748	2.56	5.95	1.26	ECL-AXS618P	\$1,102.28
24.53	24.53	0.748	0.748	2.60	7.91	1.378	ECL-AXM824P	\$1,779.89



Circular Premium Range Chucks

A	B	C	D	H	I	K	Part Number	Price Each
4.75	1.77	2.00	0.236	3.00	M6	4.02	ECL-AX475CP	\$445.88
6.50	2.24	3.00	0.157	4.00	M10	5.51	ECL-AX651CP	\$666.65
9.00	2.36	3.39	0.197	4.50	M10	7.52	ECL-AX91CP	\$912.91
12.00	2.99	5.98	0.197	7.25	M12	10.00	ECL-AX12CP	\$1,550.53



Radial Pole Premium Range Chucks

A	B	C	D	H	I	L	M	No. of Poles	Part Number	Price Each
3.94	1.89	2.00	0.236	N/A	M6	3.00	N/A	6	ECL-NR100C	\$585.40
5.90	2.72	3.00	0.157	N/A	M10	4.02	1.42	10	ECL-NR150C	\$879.60
8.86	2.80	3.38	0.197	4.48	M10	7.52	2.13	14	ECL-NR225C	\$1,338.71
11.81	2.80	5.98	0.315	7.24	M12	10.00	2.60	18	ECL-NR300C	\$2,403.22

Call Us Today For All Of Your Machine Tool Needs!

2010-11 Master Catalog

MAGNETIC CHUCKS

SineSet™ PERMANENT MAGNETIC CHUCKS

- Designed to bolt directly, with little or no indicating, to a SineSet® sine plate or compound sine plate of the same size and series to form a magnetic sine plate or magnetic compound sine plate.
- Can be used alone as a parallel chuck. The 4" x 4", 6" x 6" and 9" x 9" models can be used as squaring chucks.
- Made with ceramic magnets for superior holding power.
- Chucks are lubricated and sealed against dirt and liquids.
- Includes removable handle, side and back rails.
- STANDARD POLE: 1/4" poles and 1/8" separators produce deep flux lines for holding large and thick parts.
- FINE POLE (marked -FP): 1/8" poles and 1/8" separators produce shallow flux lines for holding small and thin parts.

**NEW
ITEM!**



Standard Pole (1/4 Poles & 1/8 Separators)

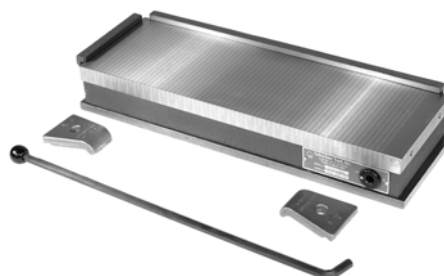
Length	Width	Height	Wt (lbs)	Part Number	Price
6"	6"	2-5/8"	21	SUB-MC-66-S1	\$807.00
12"	6"	2-5/8"	42	SUB-MC-612-S2	\$961.00
18"	6"	2-5/8"	65	SUB-MC-618-S2	\$1,292.00
12"	8"	2-5/8"	58	SUB-MC-812-S2	\$1,215.00
12"	12"	2-5/8"	100	SUB-MC-1212-S2	\$1,861.00
18"	12"	2-5/8"	151	SUB-MC-1218-S2	\$3,472.00
24"	12"	2-5/8"	202	SUB-MC-1224-S2	\$4,323.00

Fine Pole (1/8 Poles & 1/8 Separators)

Length	Width	Height	Wt (lbs)	Part Number	Price
4"	4"	2-5/8"	12	SUB-MC-44-FP-S0	\$656.00
6"	6"	2-5/8"	25	SUB-MC-66-FP-S1	\$909.00
12"	6"	2-5/8"	47	SUB-MC-612-FP-S2	\$1,098.00
18"	6"	2-5/8"	70	SUB-MC-618-FP-S2	\$1,470.00
12"	8"	2-5/8"	63	SUB-MC-812-FP-S2	\$1,377.00
12"	12"	2-5/8"	106	SUB-MC-1212-FP-S2	\$2,065.00
18"	12"	2-5/8"	160	SUB-MC-1218-FP-S2	\$3,687.00
24"	12"	2-5/8"	212	SUB-MC-1224-FP-S2	\$4,756.00

MAGNETIC SURFACE GRINDER CHUCKS

- Ceramic magnets provide superior holding power that never fades.
- Sealed against dirt and liquids and can be used in EDM machines.
- Front-mounted handle is removable to eliminate interference.
- Handle, back rail, side rail and two clamps included.
- STANDARD POLE: 1/4" poles and 1/8" separators produce deep flux lines for holding large and thick parts.
- FINE POLE (marked -FP): 1/8" poles and 1/8" separators produce shallow flux lines for holding small and thin parts.



**NEW
ITEM!**



Standard Pole (1/4 Poles & 1/8 Separators)

Length	Width	WT (lbs)	Part Number	Price
7-1/2"	4"	19	SUB-MCB-47	\$510.00
10-1/2"	5"	35	SUB-MCB-510	\$679.00
12-1/2"	6"	47	SUB-MCB-612	\$909.00
14-1/2"	6"	55	SUB-MCB-614	\$1,019.00
18-1/2"	6"	70	SUB-MCB-618	\$1,207.00
12-1/2"	8"	63	SUB-MCB-812	\$1,140.00
15-1/2"	8"	79	SUB-MCB-815	\$1,377.00
18-1/2"	8"	95	SUB-MCB-818	\$1,666.00
24-1/2"	8"	126	SUB-MCB-824	\$2,226.00
15-1/2"	10"	111	SUB-MCB-1015	\$2,159.00
18-1/2"	10"	134	SUB-MCB-1018	\$2,592.00
24-1/2"	10"	178	SUB-MCB-1024	\$3,644.00
12-1/2"	12"	107	SUB-MCB-1212	\$1,751.00
18-1/2"	12"	161	SUB-MCB-1218	\$3,311.00
24-1/2"	12"	213	SUB-MCB-1224	\$4,100.00

Fine Pole (1/8 Poles & 1/8 Separators)

Length	Width	WT (lbs)	Part Number	Price
6-1/2"	3"	13	SUB-MCB-36-FP	\$495.00
7-1/2"	4"	19	SUB-MCB-47-FP	\$545.00
10-1/2"	5"	35	SUB-MCB-510-FP	\$783.00
12-1/2"	6"	47	SUB-MCB-612-FP	\$1,040.00
14-1/2"	6"	55	SUB-MCB-614-FP	\$1,147.00
18-1/2"	6"	70	SUB-MCB-618-FP	\$1,385.00
12-1/2"	8"	63	SUB-MCB-812-FP	\$1,302.00
15-1/2"	8"	79	SUB-MCB-815-FP	\$1,564.00
18-1/2"	8"	95	SUB-MCB-818-FP	\$1,851.00
24-1/2"	8"	126	SUB-MCB-824-FP	\$2,505.00
15-1/2"	10"	111	SUB-MCB-1015-FP	\$2,360.00
18-1/2"	10"	134	SUB-MCB-1018-FP	\$2,777.00
24-1/2"	10"	178	SUB-MCB-1024-FP	\$3,831.00
12-1/2"	12"	107	SUB-MCB-1212-FP	\$1,953.00
18-1/2"	12"	161	SUB-MCB-1218-FP	\$3,518.00
24-1/2"	12"	213	SUB-MCB-1224-FP	\$4,537.00

POWER MATRIX

Electronically Switched Permanent-Magnet Square Pole Chucks

Power Matrix is available in many sizes, custom formats and pole piece options, and with a clamping force of up to 165 tons/m², it is suitable for almost all machining applications. Permanent magnet technology means the Power Matrix is failsafe: if the power fails the workpiece remains securely held.

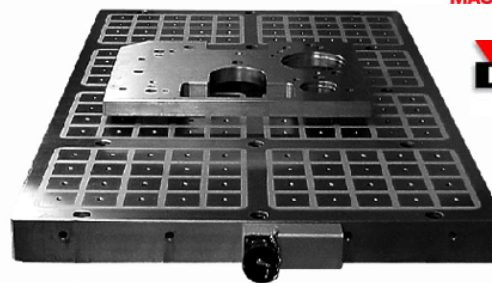
Use Power Matrix to:

- Increase feed rates and metal removal
- Extend insert and tool life by reducing vibration and chatter
- Improve product surface finish
- Machine non-stop-manual clamps to move during machining
- Clamp consistently and uniformly every time: 165 tons/m²
- Dramatically reduce clamping time-push button clamping
- Increase productivity from your existing machines
- Improve safety- load is held even if power is cut

Please Call For
More Information



**NEW
ITEM!**

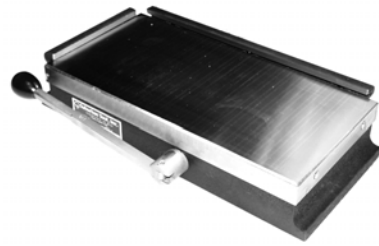


Call Us Or Visit Our Website For Our Complete Selection!

MAGNETIC CHUCKS/CLAMPS

MAGNUM-FORCE™ MAGNETIC SURFACE GRINDER CHUCKS

- Made with ceramic magnets for superior holding power.
- Stationary magnets in the top plate and a movable magnet core provide an average holding power of 90-100 pounds per square inch. This is twice the power of a standard chuck.
- Chucks are lubricated and sealed against dirt and liquids.
- A rigid work surface is provided by laminated and brazed top plate.
- These chucks provide maximum holding power of both small & large parts, due to combination fine / standard pole spacing.
- Low height for more work clearance.
- Two hold-down clamps, one side rail and one end rail are included



Length	Width	Height	WT (lbs)	Part Number	Price
4-3/4"	4"	2-3/8"	10	SUB-DMB-44	\$948.00
9-1/8"	4"	2-3/8"	20	SUB-DMB-48	\$1,001.00
11-1/8"	5"	2-3/4"	28	SUB-DMB-510	\$1,159.00
13-1/8"	5"	2-3/4"	35	SUB-DMB-512	\$1,334.00
7-1/8"	6-1/2"	2-3/4"	25	SUB-DMB-66	\$1,114.00
11-1/8"	6"	2-3/4"	35	SUB-DMB-610	\$1,192.00
13-1/8"	6"	2-3/4"	44	SUB-DMB-612	\$1,309.00
15-1/2"	6"	2-3/4"	52	SUB-DMB-614	\$1,540.00
19-3/4"	6"	2-3/4"	66	SUB-DMB-618	\$1,723.00

Length	Width	Height	WT (lbs)	Part Number	Price
15-3/4"	8"	2-3/4"	73	SUB-DMB-815	\$2,089.00
18-3/4"	8"	2-3/4"	87	SUB-DMB-818	\$2,517.00
20-3/4"	8"	2-3/4"	102	SUB-DMB-820	\$2,857.00
24-3/4"	8"	2-3/4"	116	SUB-DMB-824	\$2,937.00
15-3/4"	10"	2-3/4"	90	SUB-DMB-1015	\$2,898.00
18-3/4"	10"	2-3/4"	101	SUB-DMB-1018	\$3,429.00
20-3/4"	10"	2-3/4"	125	SUB-DMB-1020	\$4,056.00
24-3/4"	10"	2-3/4"	134	SUB-DMB-1024	\$4,779.00
18-3/4"	12"	3-1/2"	158	SUB-DMB-1218	\$4,296.00
24-3/4"	12"	3-1/2"	192	SUB-DMB-1224	\$5,755.00

4 JAW SQUARE CHUCK

Low Profile, Super Thin

- Universal scroll chuck design
- Super thin design allows greater Z-axis machining
- Designed for fast and easy positioning on worktable
- Ideal for pallet applications, standard mills, vertical machining centers, angle plates and tombstones
- Master jaw style chuck. Accepts American standard tongue and groove top jaws



Chuck Size	Base Dimensions	Weight (lbs)	Part Number	Price
6"	8.46" x 6.50"	31	PBA-MCA6	\$975.10
8"	9.84" x 7.87"	46	PBA-MCA8	\$1,347.50
10"	12.20" x 9.84"	70	PBA-MCA10	\$1,759.10
12"	14.96" x 12.20"	124	PBA-MCA12	\$2,303.00

3 JAW ROUND CHUCK

Low Profile, Super Thin

- Three operating pinions positioned at a 45° angle for easier operation
- Easy installation with flange type mounting
- Accuracy: .001" repeatability on duplicate parts using the nominated pinion
- Ideal for pallet applications, standard mills, vertical machining centers, angle plates and tombstones
- Master jaw style chuck. Accepts American standard tongue and groove top jaws



Chuck Size	Base Dimensions	Weight (lbs)	Part Number	Price
6"	8.46" x 6.50"	27	PBA-NBK6	\$925.00
8"	9.84" x 7.87"	42	PBA-NBK8	\$1,375.00
10"	12.20" x 9.84"	64	PBA-NBK10	\$1,650.00
12"	14.96" x 12.20"	103	PBA-NBK12	\$1,995.00

C-CLAMPS

Drop Forged

Industry's top choice for maintenance, production and repair operations.



- Drop-forged steel frame, regular-duty with extra deep-throat
- Black-oxide coated spindles and Perma-Pad® resist corrosion, and are replaceable

Model	Opening Capacity	Dthroat Depth	Spindle Dia	Min. Proof Test	Ship Weight	Part Number	Price Each
402	0 - 2-1/8"	2-1/4"	9/16	3500 lbs	2	WI-14214	\$18.39
403	0 - 3"	2-1/2"	9/16	3500 lbs	3	WI-14228	\$19.99
404	0 - 4-1/4"	3-1/4"	3/4	6200 lbs	4	WI-14242	\$27.99
406	0 - 6-1/16"	4-1/8"	3/4	6600 lbs	6	WI-14256	\$39.99
408	0 - 8-1/4"	5"	3/4	6900 lbs	7	WI-14270	\$53.59
410	2 - 10-1/8"	6"	3/4	800 lbs	11	WI-14284	\$69.59
412	2 - 12-1/4"	6-5/16"	7/8	9300 lbs	15	WI-14298	\$95.99

C-CLAMPS

Regular Duty, Drop Forged

Drop forged, regular-duty with extra deep-throat.



- Improved frame design allows for a higher proof test, greater throat depth, and lower overall weight
- Acme rolled spindle threads provide maximum strength and clamping force

Model	Opening Capacity	Throat Depth	Spindle Dia	Min. Proof Test	Ship Weight	Part Number	Price Each
H402	0-2"	2"	1/2"	3500 lbs	2 lbs	WI-20301	\$15.99
H403	0-3"	2-3/8"	5/8"	3500 lbs	2 lbs	WI-20302	\$18.39
H404	0-4"	2-3/4"	3/4"	6200 lbs	3 lbs	WI-20303	\$23.99
H406	0-6"	3-5/8"	3/4"	6600 lbs	5 lbs	WI-20304	\$33.59
H408	0-8"	4-1/2"	3/4"	6900 lbs	9 lbs	WI-20305	\$43.99
H410	0-10"	5-3/8"	7/8"	8000 lbs	11 lbs	WI-20306	\$62.39
H412	0-12"	5-3/4"	7/8"	9500 lbs	14 lbs	WI-20307	\$78.39

C-CLAMPS

High Visibility Forged

Drop-forged, regular-duty with extra deep-throat.



- Spatter resistant copper plated spindle
- Exceptional value high-visibility welding clamps

Model	Opening Capacity	Dthroat Depth	Spindle Dia	Min. Proof Test	Ship Weight	Part Number	Price Each
H402CS	0-2	2	1/2	3500 lbs	2	WI-20479	\$17.59
H403CS	0-3	2-3/8	5/8	3500 lbs	2	WI-20481	\$19.19
H404CS	0-4	2-3/4	3/4	6200 lbs	3	WI-20483	\$26.39
H406CS	0-6	3-5/8	3/4	6600 lbs	5	WI-20484	\$36.79
H408CS	0-8	4-1/2	3/4	6900 lbs	9	WI-20485	\$49.59
H410CS	0-10	5-3/8	7/8	8000 lbs	11	WI-20486	\$66.39
H412CS	0-12	5-3/4	7/8	9500 lbs	14	WI-20487	\$91.19

Call Us Today For All Of Your Machine Tool Needs!