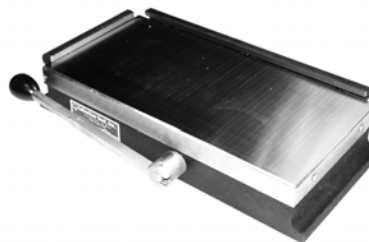


MAGNETIC CHUCKS/CLAMPS

MAGNUM-FORCE™ MAGNETIC SURFACE GRINDER CHUCKS

- Made with ceramic magnets for superior holding power.
- Stationary magnets in the top plate and a movable magnet core provide an average holding power of 90-100 pounds per square inch. This is twice the power of a standard chuck.
- Chucks are lubricated and sealed against dirt and liquids.
- A rigid work surface is provided by laminated and brazed top plate.
- These chucks provide maximum holding power of both small & large parts, due to combination fine / standard pole spacing.
- Low height for more work clearance.
- Two hold-down clamps, one side rail and one end rail are included



**NEW
ITEM!**

Length	Width	Height	WT (lbs)	Part Number	Price
4-3/4"	4"	2-3/8"	10	SUB-DMB-44	\$948.00
9-1/8"	4"	2-3/8"	20	SUB-DMB-48	\$1,001.00
11-1/8"	5"	2-3/4"	28	SUB-DMB-510	\$1,159.00
13-1/8"	5"	2-3/4"	35	SUB-DMB-512	\$1,334.00
7-1/8"	6-1/2"	2-3/4"	25	SUB-DMB-66	\$1,114.00
11-1/8"	6"	2-3/4"	35	SUB-DMB-610	\$1,192.00
13-1/8"	6"	2-3/4"	44	SUB-DMB-612	\$1,309.00
15-1/2"	6"	2-3/4"	52	SUB-DMB-614	\$1,540.00
19-3/4"	6"	2-3/4"	66	SUB-DMB-618	\$1,723.00

Length	Width	Height	WT (lbs)	Part Number	Price
15-3/4"	8"	2-3/4"	73	SUB-DMB-815	\$2,089.00
18-3/4"	8"	2-3/4"	87	SUB-DMB-818	\$2,517.00
20-3/4"	8"	2-3/4"	102	SUB-DMB-820	\$2,857.00
24-3/4"	8"	2-3/4"	116	SUB-DMB-824	\$2,937.00
15-3/4"	10"	2-3/4"	90	SUB-DMB-1015	\$2,898.00
18-3/4"	10"	2-3/4"	101	SUB-DMB-1018	\$3,429.00
20-3/4"	10"	2-3/4"	125	SUB-DMB-1020	\$4,056.00
24-3/4"	10"	2-3/4"	134	SUB-DMB-1024	\$4,779.00
18-3/4"	12"	3-1/2"	158	SUB-DMB-1218	\$4,296.00
24-3/4"	12"	3-1/2"	192	SUB-DMB-1224	\$5,755.00

4 JAW SQUARE CHUCK

Low Profile, Super Thin

- Universal scroll chuck design
- Super thin design allows greater Z-axis machining
- Designed for fast and easy positioning on worktable
- Ideal for pallet applications, standard mills, vertical machining centers, angle plates and tombstones
- Master jaw style chuck. Accepts American standard tongue and groove top jaws



**NEW
ITEM!**

Chuck Size	Base Dimensions	Weight (lbs)	Part Number	Price
6"	8.46" x 6.50"	31	PBA-MCA6	\$975.10
8"	9.84" x 7.87"	46	PBA-MCA8	\$1,347.50
10"	12.20" x 9.84"	70	PBA-MCA10	\$1,759.10
12"	14.96" x 12.20"	124	PBA-MCA12	\$2,303.00

3 JAW ROUND CHUCK

Low Profile, Super Thin

- Three operating pinions positioned at a 45° angle for easier operation
- Easy installation with flange type mounting
- Accuracy: .001" repeatability on duplicate parts using the nominated pinion
- Ideal for pallet applications, standard mills, vertical machining centers, angle plates and tombstones
- Master jaw style chuck. Accepts American standard tongue and groove top jaws



**NEW
ITEM!**



Chuck Size	Base Dimensions	Weight (lbs)	Part Number	Price
6"	8.46" x 6.50"	27	PBA-NBK6	\$925.00
8"	9.84" x 7.87"	42	PBA-NBK8	\$1,375.00
10"	12.20" x 9.84"	64	PBA-NBK10	\$1,650.00
12"	14.96" x 12.20"	103	PBA-NBK12	\$1,995.00

C-CLAMPS

Drop Forged

Industry's top choice for maintenance, production and repair operations.



- Drop-forged steel frame, regular-duty with extra deep-throat
- Black-oxide coated spindles and Perma-Pad® resist corrosion, and are replaceable

Model	Opening Capacity	Dthroat Depth	Spindle Dia	Min. Proof Test	Ship Weight	Part Number	Price Each
402	0 - 2-1/8"	2-1/4"	9/16	3500 lbs	2	WI-14214	\$18.39
403	0 - 3"	2-1/2"	9/16	3500 lbs	3	WI-14228	\$19.99
404	0 - 4-1/4"	3-1/4"	3/4	6200 lbs	4	WI-14242	\$27.99
406	0 - 6-1/16"	4-1/8"	3/4	6600 lbs	6	WI-14256	\$39.99
408	0 - 8-1/4"	5"	3/4	6900 lbs	7	WI-14270	\$53.59
410	2 - 10-1/8"	6"	3/4	800 lbs	11	WI-14284	\$69.59
412	2 - 12-1/4"	6-5/16"	7/8	9300 lbs	15	WI-14298	\$95.99

C-CLAMPS

Regular Duty, Drop Forged

Drop forged, regular-duty with extra deep-throat.



- Improved frame design allows for a higher proof test, greater throat depth, and lower overall weight
- Acme rolled spindle threads provide maximum strength and clamping force

Model	Opening Capacity	Throat Depth	Spindle Dia	Min. Proof Test	Ship Weight	Part Number	Price Each
H402	0-2"	2"	1/2"	3500 lbs	2 lbs	WI-20301	\$15.99
H403	0-3"	2-3/8"	5/8"	3500 lbs	2 lbs	WI-20302	\$18.39
H404	0-4"	2-3/4"	3/4"	6200 lbs	3 lbs	WI-20303	\$23.99
H406	0-6"	3-5/8"	3/4"	6600 lbs	5 lbs	WI-20304	\$33.59
H408	0-8"	4-1/2"	3/4"	6900 lbs	9 lbs	WI-20305	\$43.99
H410	0-10"	5-3/8"	7/8"	8000 lbs	11 lbs	WI-20306	\$62.39
H412	0-12"	5-3/4"	7/8"	9500 lbs	14 lbs	WI-20307	\$78.39

C-CLAMPS

High Visibility Forged

Drop-forged, regular-duty with extra deep-throat.



- Spatter resistant copper plated spindle
- Exceptional value high-visibility welding clamps

Model	Opening Capacity	Dthroat Depth	Spindle Dia	Min. Proof Test	Ship Weight	Part Number	Price Each
H402CS	0-2	2	1/2	3500 lbs	2	WI-20479	\$17.59
H403CS	0-3	2-3/8	5/8	3500 lbs	2	WI-20481	\$19.19
H404CS	0-4	2-3/4	3/4	6200 lbs	3	WI-20483	\$26.39
H406CS	0-6	3-5/8	3/4	6600 lbs	5	WI-20484	\$36.79
H408CS	0-8	4-1/2	3/4	6900 lbs	9	WI-20485	\$49.59
H410CS	0-10	5-3/8	7/8	8000 lbs	11	WI-20486	\$66.39
H412CS	0-12	5-3/4	7/8	9500 lbs	14	WI-20487	\$91.19

Call Us Today For All Of Your Machine Tool Needs!