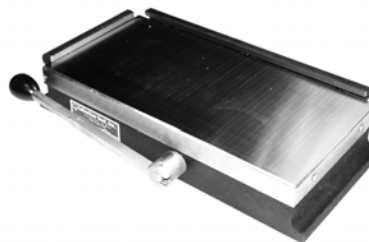


MAGNETIC CHUCKS/CLAMPS

MAGNUM-FORCE™ MAGNETIC SURFACE GRINDER CHUCKS

- Made with ceramic magnets for superior holding power.
- Stationary magnets in the top plate and a movable magnet core provide an average holding power of 90-100 pounds per square inch. This is twice the power of a standard chuck.
- Chucks are lubricated and sealed against dirt and liquids.
- A rigid work surface is provided by laminated and brazed top plate.
- These chucks provide maximum holding power of both small & large parts, due to combination fine / standard pole spacing.
- Low height for more work clearance.
- Two hold-down clamps, one side rail and one end rail are included



**NEW
ITEM!**

Length	Width	Height	WT (lbs)	Part Number	Price
4-3/4"	4"	2-3/8"	10	SUB-DMB-44	\$948.00
9-1/8"	4"	2-3/8"	20	SUB-DMB-48	\$1,001.00
11-1/8"	5"	2-3/4"	28	SUB-DMB-510	\$1,159.00
13-1/8"	5"	2-3/4"	35	SUB-DMB-512	\$1,334.00
7-1/8"	6-1/2"	2-3/4"	25	SUB-DMB-66	\$1,114.00
11-1/8"	6"	2-3/4"	35	SUB-DMB-610	\$1,192.00
13-1/8"	6"	2-3/4"	44	SUB-DMB-612	\$1,309.00
15-1/2"	6"	2-3/4"	52	SUB-DMB-614	\$1,540.00
19-3/4"	6"	2-3/4"	66	SUB-DMB-618	\$1,723.00

Length	Width	Height	WT (lbs)	Part Number	Price
15-3/4"	8"	2-3/4"	73	SUB-DMB-815	\$2,089.00
18-3/4"	8"	2-3/4"	87	SUB-DMB-818	\$2,517.00
20-3/4"	8"	2-3/4"	102	SUB-DMB-820	\$2,857.00
24-3/4"	8"	2-3/4"	116	SUB-DMB-824	\$2,937.00
15-3/4"	10"	2-3/4"	90	SUB-DMB-1015	\$2,898.00
18-3/4"	10"	2-3/4"	101	SUB-DMB-1018	\$3,429.00
20-3/4"	10"	2-3/4"	125	SUB-DMB-1020	\$4,056.00
24-3/4"	10"	2-3/4"	134	SUB-DMB-1024	\$4,779.00
18-3/4"	12"	3-1/2"	158	SUB-DMB-1218	\$4,296.00
24-3/4"	12"	3-1/2"	192	SUB-DMB-1224	\$5,755.00

4 JAW SQUARE CHUCK

Low Profile, Super Thin

- Universal scroll chuck design
- Super thin design allows greater Z-axis machining
- Designed for fast and easy positioning on worktable
- Ideal for pallet applications, standard mills, vertical machining centers, angle plates and tombstones
- Master jaw style chuck. Accepts American standard tongue and groove top jaws



**NEW
ITEM!**

Chuck Size	Base Dimensions	Weight (lbs)	Part Number	Price
6"	8.46" x 6.50"	31	PBA-MCA6	\$975.10
8"	9.84" x 7.87"	46	PBA-MCA8	\$1,347.50
10"	12.20" x 9.84"	70	PBA-MCA10	\$1,759.10
12"	14.96" x 12.20"	124	PBA-MCA12	\$2,303.00

3 JAW ROUND CHUCK

Low Profile, Super Thin

- Three operating pinions positioned at a 45° angle for easier operation
- Easy installation with flange type mounting
- Accuracy: .001" repeatability on duplicate parts using the nominated pinion
- Ideal for pallet applications, standard mills, vertical machining centers, angle plates and tombstones
- Master jaw style chuck. Accepts American standard tongue and groove top jaws



**NEW
ITEM!**



Chuck Size	Base Dimensions	Weight (lbs)	Part Number	Price
6"	8.46" x 6.50"	27	PBA-NBK6	\$925.00
8"	9.84" x 7.87"	42	PBA-NBK8	\$1,375.00
10"	12.20" x 9.84"	64	PBA-NBK10	\$1,650.00
12"	14.96" x 12.20"	103	PBA-NBK12	\$1,995.00

C-CLAMPS

Drop Forged

Industry's top choice for maintenance, production and repair operations.



- Drop-forged steel frame, regular-duty with extra deep-throat
- Black-oxide coated spindles and Perma-Pad® resist corrosion, and are replaceable

Model	Opening Capacity	Dthroat Depth	Spindle Dia	Min. Proof Test	Ship Weight	Part Number	Price Each
402	0 - 2-1/8"	2-1/4"	9/16	3500 lbs	2	WI-14214	\$18.39
403	0 - 3"	2-1/2"	9/16	3500 lbs	3	WI-14228	\$19.99
404	0 - 4-1/4"	3-1/4"	3/4	6200 lbs	4	WI-14242	\$27.99
406	0 - 6-1/16"	4-1/8"	3/4	6600 lbs	6	WI-14256	\$39.99
408	0 - 8-1/4"	5"	3/4	6900 lbs	7	WI-14270	\$53.59
410	2 - 10-1/8"	6"	3/4	800 lbs	11	WI-14284	\$69.59
412	2 - 12-1/4"	6-5/16"	7/8	9300 lbs	15	WI-14298	\$95.99

C-CLAMPS

Regular Duty, Drop Forged

Drop forged, regular-duty with extra deep-throat.



- Improved frame design allows for a higher proof test, greater throat depth, and lower overall weight
- Acme rolled spindle threads provide maximum strength and clamping force

Model	Opening Capacity	Throat Depth	Spindle Dia	Min. Proof Test	Ship Weight	Part Number	Price Each
H402	0-2"	2"	1/2"	3500 lbs	2 lbs	WI-20301	\$15.99
H403	0-3"	2-3/8"	5/8"	3500 lbs	2 lbs	WI-20302	\$18.39
H404	0-4"	2-3/4"	3/4"	6200 lbs	3 lbs	WI-20303	\$23.99
H406	0-6"	3-5/8"	3/4"	6600 lbs	5 lbs	WI-20304	\$33.59
H408	0-8"	4-1/2"	3/4"	6900 lbs	9 lbs	WI-20305	\$43.99
H410	0-10"	5-3/8"	7/8"	8000 lbs	11 lbs	WI-20306	\$62.39
H412	0-12"	5-3/4"	7/8"	9500 lbs	14 lbs	WI-20307	\$78.39

C-CLAMPS

High Visibility Forged

Drop-forged, regular-duty with extra deep-throat.



- Spatter resistant copper plated spindle
- Exceptional value high-visibility welding clamps

Model	Opening Capacity	Dthroat Depth	Spindle Dia	Min. Proof Test	Ship Weight	Part Number	Price Each
H402CS	0-2	2	1/2	3500 lbs	2	WI-20479	\$17.59
H403CS	0-3	2-3/8	5/8	3500 lbs	2	WI-20481	\$19.19
H404CS	0-4	2-3/4	3/4	6200 lbs	3	WI-20483	\$26.39
H406CS	0-6	3-5/8	3/4	6600 lbs	5	WI-20484	\$36.79
H408CS	0-8	4-1/2	3/4	6900 lbs	9	WI-20485	\$49.59
H410CS	0-10	5-3/8	7/8	8000 lbs	11	WI-20486	\$66.39
H412CS	0-12	5-3/4	7/8	9500 lbs	14	WI-20487	\$91.19

Call Us Today For All Of Your Machine Tool Needs!

TOGGLE CLAMPS-FULL LINE AVAILABLE

C

As one of the oldest high quality clamp manufacturers, Brauer offers a very large selection of clamps. If you do not see the clamp you need, please call us and let us help you find the clamp for your specific application.

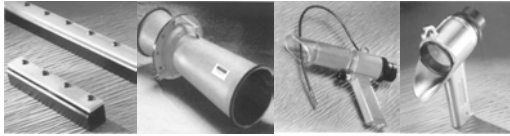
Over 300 Models Available!
Great European Quality!



- Brauer is adept at modifying clamps for special applications
- Better clamps at lower prices
- Offering a full selection of:
 - Push/Pull Clamps
 - Hook Clamps
 - Horizontal and Vertical Clamps
 - Slim Line Clamps
 - Regular and Heavy Duty Pneumatic
 - Mechanical/Pneumatic Presses
 - Latch Clamps

Brauer also offers a full line of Air Movers, FOB England. For additional information on Brauer clamps or air movers, please visit www.brauer.co.uk

Air Movers Also Available!



Why Are Brauer Clamps Better?

Hardened Bushes
For Increased Rigidity

Fewer Pinch Points
For Added Safety

Ergonomic
Orange Handle

Published Holding
Forces For All
3 Pin Locations

Geometry Designed
For Smooth Action

Spindle Included
On Standard Clamps

Interchangeable Hole Pattern
With "Competitor's" Clamps

Solid Stainless
Pins Throughout

Don't Settle For Cheap Alternatives!

Visit Our Website or CD For More Information! www.brauer.co.uk

Huge Selection IN STOCK! Call Us For All Of Your Clamp Needs!

- LATHES CHUCKS
- LIVE CENTERS
- VICE JAWS
- VICE ACCESSORIES
- STRAIGHT SHANK COLLET HOLDERS
- LATHES BUSHINGS
- DRILL CHUCKS
- CARBIDE INSERTS
- THREADING/GROOVING
- CUTTING TOOLS
- MACHINERY
- PRECISION TOOLS
- DEBURRING
- COOLANT/FLUIDS
- TOOL STORAGE

VERTICAL CLAMPS

Flanged Base, Solid Arm Type

OAL	Height	Height Under Base	Holding Cap.	Part Number	Price Each
4 3/8	6 7/8	1 1/4	551lbs	BR-V250-2A	\$10.92



CAM CLAMPS

Vertical Standard Design



OAL	Height	Height Under Base	Holding Cap.	Part Number	Price Each
2 3/64	3 7/8	5/8	165lbs	BR-CV75	\$17.77
2 7/8	6 7/8	1 3/16	550lbs	BR-CV250	\$19.91
4 9/16	8 5/8	1 21/32	770lbs	BR-CV350	\$26.35



HORIZONTAL CLAMPS

Flanged Base, Adjustable Arm Type



OAL	Height	Height Under Base	Holding Cap.	Part Number	Price Each
2 3/4	7/8	7/16	110lbs	BR-H50-2B	\$6.53
4 1/2	1 3/8	3/4	165lbs	BR-H75-2B	\$8.16
				BR-H100-2B	\$10.38
6 11/16	2 1/8	31/32	110lbs	BR-H150-2B	\$10.49
			110lbs	BR-H200-2B	\$12.43
8 7/8	2 5/8	1 11/32	110lbs	BR-H250-2B	\$14.13
			110lbs	BR-H300-2B	\$15.98
10 3/4	3 9/16	1 25/32	110lbs	BR-H350-2B	\$21.64
12	4 3/8	2 5/16	110lbs	BR-H450-2B	\$29.66
10 5/8	3 5/16	1 3/4	110lbs	BR-H700	\$64.34

VERTICAL CLAMPS

Flanged Base, Adjustable Arm Type



OAL	Height	Height Under Base	Holding Cap.	Part Number	Price Each
2 1/4	3 7/8	5/8	165lbs	BR-V75-2B	\$7.65
2 5/8	4 1/16	7/8	220lbs	BR-V100-2B	\$8.97
2 3/4	4 7/8	29/32	330lbs	BR-V150-2B	\$9.94
3 1/16	5 5/16	1 5/32	441lbs	BR-V200-2B	\$10.59
4 1/4	6 7/8	1 1/4	551lbs	BR-V250-2B	\$11.02
5 5/8	7 5/16	1 11/32	661lbs	BR-V300-2B	\$17.69
5 3/4	8 5/8	1 11/16	772lbs	BR-V350-2B	\$19.06
7	9	2	992lbs	BR-V450-2B	\$29.31
9 3/32	12 1/4	3 7/32	1212lbs	BR-V550-2B	\$41.11

HEAVY DUTY VERTICAL CLAMPS

Fixed Spindle Position, Flange Base



OAL	Height	Height Under Base	Holding Cap.	Part Number	Price Each
4 7/8	8 7/16	1 7/8	1543lbs	BR-VA700-2C	\$68.78
5 5/8	9 7/8	2 9/32	2646lbs	BR-VA1200-2C	\$83.48
7 3/8	11 5/8	2 3/4	1543lbs	BR-VA2400-2C	\$123.49



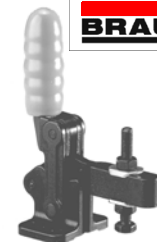
HEAVY DUTY VERTICAL CLAMPS

Adjustable Spindle Position, Flange Base



Many More Sizes And Styles In Stock!

OAL	Height	Height Under Base	Holding Cap.	Part Number	Price Each
3 5/16	4 11/16	31/32	660lbs	BR-VA300-2B	\$70.11



PULL BACK CLAMPS



OAL	Height	Height Under Base	Holding Cap.	Part Number	Price Each
3	8 3/4	1 1/4	793lbs	BR-TC79	\$27.14

Call Us Or Visit Our Website For Our Complete Selection!

CHUCK JAWS
LATHE WORKHOLDING

MACHINE VISES
MAGNETIC CHUCKS

RETENTION KNOBS
ER, DA, TG COLLETS

TOOLHOLDERS
TAP HOLDERS

INDEXABLE DRILLS
TURNING & BORING

ENDMILLS, DRILLS
TAPS & REAMERS

ABRASIVES
MEASURING TOOLS

MRO & SAFETY
FLAT STOCK/DRILL ROD

TOGGLE CLAMPS-FULL LINE AVAILABLE

C

PUSH-PULL CLAMPS

Slimline Type



OAL	Height	Plunger Travel	Holding Cap.	Part Number	Price Each
2 5/8	1 5/8	10/16	110lbs	BR-P50	\$11.12
2 11/16	3 3/4	13/16	220lbs	BR-P100	\$30.11
4 5/16	5 3/8	1 9/16	485lbs	BR-P200	\$31.66
5 5/16	3 11/32	1 1/4	551lbs	BR-P250	\$21.11
4 27/32	3 13/16	31/32	771lbs	BR-P350	\$46.40
6 7/8	6	2 11/16	881lbs	BR-P400	\$39.18
6 13/16	4 23/32	1 1/2	991lbs	BR-P450	\$32.62
6 3/8	4 21/16	1 1/2	1211lbs	BR-P550	\$49.47
9 5/32	5 5/16	2 19/32	1652lbs	BR-P750	\$51.75

PUSH-PULL CLAMPS

Long Handle



OAL	Height	Plunger Travel	Holding Cap.	Part Number	Price Each
5	5 1/8	1 1/4	1322lbs	BR-P600L	\$42.45
7 1/2	7 7/8	1 3/32	2643lbs	BR-P1200L	\$59.31

TOGGLE HAND PRESS

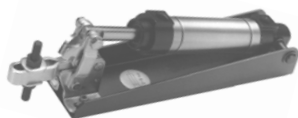
Bench Mount



OAL	Height	Stroke	Holding Force	Part Number	Price Each
150mm	202mm	32mm	600 daN	BR-P600PR	\$233.94
192mm	290mm	50mm	1200daN	BR-P1200PR	\$335.01

VERTICAL CLAMPS

Pneumatic



OAL	Height	Height Under Base	Holding Cap.	Part Number	Price Each
7	2	23/32	165lbs	BR-V75X	\$92.36
8 15/16	2 1/2	15/16	330lbs	BR-V150X	\$85.32
12 1/8	3 5/16	1 3/8	550lbs	BR-V250X	\$143.35

CAM SWING CLAMPS

Heavy Duty



OAL	Height	Holding Cap.	Part Number	Price Each
4 3/8	1 1/2	660lbs	BR-CS300	\$62.27
6	2 1/8	1760lbs	BR-CS800	\$129.00
7 7/8	3 1/32	2640lbs	BR-CS1200	\$127.11

The above clamps are clockwise. To order counter-clockwise, add "A" to end of part number.

CAM RAM CLAMPS

Heavy Duty



OAL	Height	Holding Cap.	Part Number	Price Each
4 21/64	1 39/64	8800lbs	BR-CR4000	\$107.37
5 33/64	2 1/4	11000lbs	BR-CR5000	\$135.92

The above clamps are clockwise. To order counter-clockwise, add "A" to end of part number.

SWING CLAMPS



OAL	Height	Holding Cap.	Part Number	Price Each
13/32	2 5/32	4400lbs	BR-1015-10	\$17.06

PUSH-PULL CLAMPS

Heavy Duty



Many More Sizes And Styles In Stock!

OAL	Height	Plunger Travel	Holding Cap.	Part Number	Price Each
5	2 5/8	1 1/4	1322lbs	BR-P600	\$28.33
7 1/2	3 1/2	1 31/32	2643lbs	BR-P1200	\$47.26

PUSH-PULL CLAMPS

Pneumatic



OAL	Height	Plunger Travel	Holding Cap.	Part Number	Price Each
12 3/4	2 1/8	31/32	4400lbs	BR-P600X	\$161.17

CAM PUSH CLAMPS

Heavy Duty



OAL	Height	Holding Cap.	Part Number	Price Each
2 33/64	3 1/32	1320lbs	BR-CP1500	\$62.25
1 31/32	6 49/64	3300lbs	BR-CP1500L	\$71.29

HEX KEY CLAMPS

Heavy Duty



OAL	Height	Holding Cap.	Part Number	Price Each
1 7/32	2 29/32	4400lbs	BR-1016-10	\$65.20

HEAVY DUTY VERTICAL CLAMPS

Straight Arm, Straight Base



Many More Sizes And Styles In Stock!

OAL	Height	Height Under Base	Holding Cap.	Part Number	Price Each
4 3/32	9 1/4	2 3/4	1543lbs	BR-VA700-1A	\$59.12
4 7/8	10 7/8	3 3/8	2646lbs	BR-VA1200-1A	\$73.46

HOOK CLAMPS

Also Available In Stainless Steel!



OAL	Height	Holding Cap.	Part Number	Price Each
6 5/32	1 1/32	441lbs	BR-LH200	\$19.49
9 3/4	1 15/32	881lbs	BR-LH400	\$31.11
12 7/32	1 15/16	1542lbs	BR-LH700	\$46.31

LATCH CLAMPS

Horizontal Position



OAL	Height	Holding Cap.	Part Number	Price Each
4 1/8-5 5/16	1 5/8	441lbs	BR-LU200H	\$12.12
5 11/16-7 9/32	2 1/2	881lbs	BR-LU400H	\$17.12
7 1/2-9 13/16	3 5/16	1542lbs	BR-LU700H	\$23.87

Call Us Today For All Of Your Machine Tool Needs!