

HARD JAWS-ACME & SQUARE KEY SERRATED

E

LATHE CHUCKS
LIVE CENTERS

VICE JAWS
VICE ACCESSORIES

STRAIGHT SHANK
COLLET HOLDERS

LATHE BUSHINGS
DRILL CHUCKS

CARBIDE INSERTS
THREADING/GROOVING

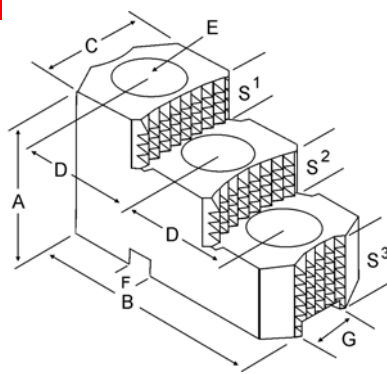
CUTTING TOOLS
MACHINERY

PRECISION TOOLS
DEBURRING

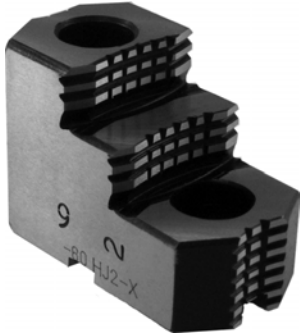
COOLANT/FLUIDS
TOOL STORAGE



Please See Pages 50-53
For Our Complete Selection
Of Acme & Square Serrated
Chuck Jaws



HARD JAWS ACME & SQUARE KEY SERRATED



- FEATURES:**
- Designed for first operation roughing, expect standard runout between **0.005-0.010**
 - Reversible-suitable for OD & ID workholding.
 - **XTRA BITE** -very aggressive bite. Has conical teeth for extra gripping power and ground body to provide improved runout.



XTRA BITE (-X)
Very aggressive grip, ground body and sides for improved runout.

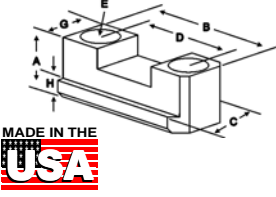
Acme Key Serrated Hard Jaws

GROUP	Chuck Size	Critical Dimensions					Tap Hole	Width Inch C	OAL Inch B	Height Inch A	No. of Holes	No. of Steps	Top Step Ht S1	Mid Step Ht S2	Bot Step Ht S3	Part Number	Price Per Set
		Groove Width G	Tongue Width F	Screw Size E	Hole Space D												
AI-07-1/2-17	10	0.750	1.031	1/2	1.750	5/16-18	1.750	4.250	2.480	2	2	0.600	0.600	1.280	AC-100HJ2-X	\$586.76	
AI-08-5/8-20	12	0.875	1.031	5/8	2.000	5/16-18	1.750	4.875	2.469	2	2	0.550	0.550	1.369	AC-120HJ2-X	\$754.41	
AI-10-3/4-25	15 & UP	1.000	1.531	3/4	2.500	3/8-16	2.500	5.500	3.469	2	2	0.950	0.950	1.569	AC-150HJ2-X	\$888.53	

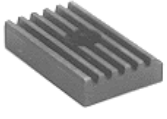
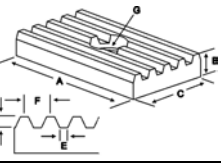
Square Key Serrated Hard Jaws

GROUP	Chuck Size	Critical Dimensions					Tap Hole	Width Inch C	OAL Inch B	Height Inch A	No. of Holes	No. of Steps	Top Step Ht S1	Mid Step Ht S2	Bot Step Ht S3	Part Number	Price Per Set
		Groove Width G	Tongue Width F	Screw Size E	Hole Space D												
SI-07-1/2-17	12	0.750	0.994	1/2	1.750	5/16-18	1.750	4.875	2.469	2	2	0.650	0.650	1.169	SP-120HJ2-X	\$586.76	
SI-07-5/8-17	12	0.750	0.994	5/8	1.750	5/16-18	1.750	4.875	2.469	2	2	0.650	0.650	1.169	SP-125HJ2-X	\$586.76	
SI-10-3/4-25	15 & UP	1.000	1.488	3/4	2.500	3/8-16	2.500	5.500	3.469	2	2	0.950	0.950	1.569	SP-150HJ2-X	\$838.24	

ACME SERRATED KEY TYPE JAW NUTS & MASTER KEYS

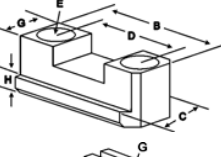


Chuck Size	Critical Dimensions						2 Screws Included With Each Jaw Nut				
	Heel Height H	Groove Width G	Screw Size E	Holes Space D	Hght Inch A	Width Inch C	Length Inch B	Jaw Nut Part Number	Price Each	Screw Part Number	Price Each
10	0.380	0.677	1/2-13	1.750	0.641	0.940	2.50	AC-100JN	\$44.33	S1/213150	\$2.00
12	0.440	0.801	5/8-11	2.000	0.744	1.060	3.00	AC-125JN	\$46.37	S5/811150	\$3.00
15 - 18	0.550	0.933	3/4-10	2.500	0.930	1.250	3.50	AC-155JN	\$48.88	S3/410175	\$4.00

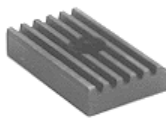
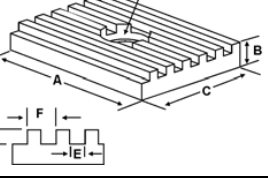


Chuck Size	Critical Dimensions					Width Inch C	Height Inch B	Length Inch A	Master Key Part Number	Price Each
	Screw Size G	Pitch F	Slot E	Depth D						
10-12	5/16	0.250	0.093	0.130	1.030	1/2"	1.687	AC-120AK	\$31.70	
10-12	3/8	0.250	0.093	0.130	1.187	1/2"	2.000	AC-125AK	\$36.57	
15-18	3/8	0.250	0.093	0.130	1.530	1/2"	2.000	AC-150AK	\$39.01	
15-18	3/8	0.250	0.093	0.130	1.530	1/2"	2.437	AC-180AK	\$39.01	

SQUARE SERRATED KEY TYPE JAW NUTS & MASTER KEYS



Chuck Size	Critical Dimensions						2 Screws Included With Each Jaw Nut				
	Heel Height H	Groove Width G	Screw Size E	Hole Space D	Hght Inch A	Width Inch C	Length Inch B	Jaw Nut Part Number	Price Each	Screw Part Number	Price Each
10 - 12	0.375	0.748	1/2-13	1.750	1.000	1.000	2.438	SP-100JN	\$47.12	S1/213150	\$2.00
10 - 12	0.375	0.748	5/8-11	1.750	1.000	1.000	2.500	SP-125JN	\$47.12	S5/811150	\$3.00
15 - 18	0.438	1.000	3/4-10	2.500	1.250	1.250	3.750	SP-155JN	\$51.54	S3/410175	\$4.00



Chuck Size	Critical Dimensions					Width Inch C	Hght Inch B	Length Inch A	Master Key Part Number	Price Each
	Screw Size G	Pitch F	Slot E	Depth D						
10 - 12	5/16	0.250	0.124	0.130	.993	0.500	1.688	SP-120SQK	\$24.38	
15 - 18	3/8	0.250	0.124	0.130	1.487	0.500	2.000	SP-150SQK	\$27.43	
15 - 18	3/8	0.250	0.124	0.130	1.487	0.500	2.250	SP-180SQK	\$28.04	

Call Us Or Visit Our Website For Our Complete Selection!