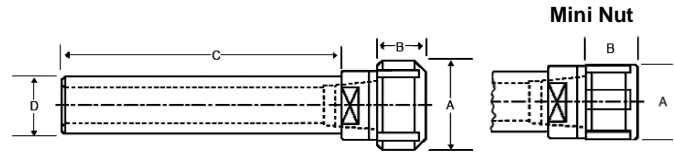


ER STRAIGHT SHANK HOLDERS

ER-8 & ER-11 Collet Extensions



- Crafted from heat treated alloy steel
- Available with round or flatted shank
- Supplied with collet nut & backup screw



Collet Series	Shank Dia D	Shank Length C	Nut Dia A	Nut Length B	Nut Type	Shank Type	Brand	Part Number	Price Each	Thread of Nut	Collet Nut Part Number	Wrench Part Number
---------------	-------------	----------------	-----------	--------------	----------	------------	-------	-------------	------------	---------------	------------------------	--------------------

ER 8 Straight Shank Collet Holders

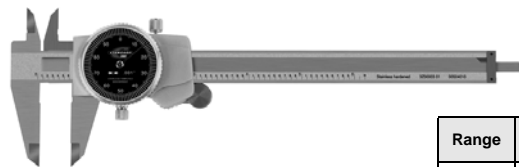
ER08	0.375	2.50	0.48	0.44	Mini	Round	Veritru	S-E08R03-25N-V	\$77.00	M10X.75	CN-ER08MN-V	WR-ER08MN
		3.50	0.48	0.44	Mini	Round	Veritru	S-E08R03-35N-V	\$77.00	M10X.75	CN-ER08MN-V	WR-ER08MN
	0.500	2.50	0.48	0.44	Mini	Flat	Veritru	S-E08F05-25N-V	\$82.50	M10X.75	CN-ER08MN-V	WR-ER08MN
					Mini	Round	Veritru	S-E08R05-25N-V	\$77.00	M10X.75	CN-ER08MN-V	WR-ER08MN
		3.70	0.48	0.44	Mini	Round	Veritru	S-E08R05-37N-V	\$82.50	M10X.75	CN-ER08MN-V	WR-ER08MN
					Mini	Flat	Veritru	S-E08F05-37N-V	\$82.50	M10X.75	CN-ER08MN-V	WR-ER08MN
Mini	Round	Rainier	S-E08R05-37N-R	\$84.50	M10X.75	CN-ER08MN-V	WR-ER08MN					

ER 11 Straight Shank Collet Holders

ER11	0.500	3.00	0.63	0.44	Mini	Round	Rainier	S-E11R05-30N-R	\$73.06	M13 X .75	CN-ER11MN-V	WR-ER11MN
					Mini	Round	Veritru	S-E11R05-30N-V	\$71.06	M13 X .75	CN-ER11MN-V	WR-ER11MN
		4.00	0.63	0.44	Mini	Flat	Veritru	S-E11F05-40N-V	\$71.06	M13 X .75	CN-ER11MN-V	WR-ER11MN
					Mini	Round	Veritru	S-E11R05-40N-V	\$71.06	M13 X .75	CN-ER11MN-V	WR-ER11MN
		6.00	0.63	0.44	Mini	Flat	Veritru	S-E11F05-60N-V	\$78.38	M13 X .75	CN-ER11MN-V	WR-ER11MN
					Mini	Flat	Veritru	S-E11F06-60N-V	\$78.38	M13 X .75	CN-ER11MN-V	WR-ER11MN
	Mini				Round	Rainier	S-E11R05-60N-R	\$80.38	M13 X .75	CN-ER11MN-V	WR-ER11MN	
	Mini				Round	Veritru	S-E11R05-60N-V	\$78.38	M13 X .75	CN-ER11MN-V	WR-ER11MN	
	6.20	0.75	0.44	Hex	Flat	Veritru	S-E11F05-60H-V	\$67.10	M14 X .75	CN-ER11H-K	WR-ER11H	
				Hex	Round	Veritru	S-E11R05-60H-V	\$78.38	M14 X .75	CN-ER11H-K	WR-ER11H	
	0.625	2.00	0.63	0.44	Hex	Round	Rainier	S-E11R05-62H-R	\$69.10	M14 X .75	CN-ER11H-K	WR-ER11H
					Mini	Round	Rainier	S-E11R06-20N-R	\$80.38	M13 X .75	CN-ER11MN-V	WR-ER11MN
		2.50	0.63	0.44	Mini	Round	Veritru	S-E11R06-25N-V	\$78.38	M13 X .75	CN-ER11MN-V	WR-ER11MN
					Mini	Round	Rainier	S-E11R06-30N-R	\$80.38	M13 X .75	CN-ER11MN-V	WR-ER11MN
		3.00	0.63	0.44	Mini	Round	Veritru	S-E11R06-30N-V	\$78.38	M13 X .75	CN-ER11MN-V	WR-ER11MN
					Hex	Round	Veritru	S-E11R06-30H-V	\$78.10	M14 X .75	CN-ER11H-K	WR-ER11H
		6.00	0.63	0.44	Mini	Round	Rainier	S-E11R06-60N-R	\$80.38	M13 X .75	CN-ER11MN-V	WR-ER11MN
					Mini	Round	Veritru	S-E11R06-60N-V	\$78.38	M13 X .75	CN-ER11MN-V	WR-ER11MN
			0.75	0.44	Hex	Flat	Veritru	S-E11F06-60H-V	\$78.10	M14 X .75	CN-ER11H-K	WR-ER11H
					Hex	Round	Veritru	S-E11R06-60H-V	\$75.90	M14 X .75	CN-ER11H-K	WR-ER11H
		6.20	0.75	0.44	Hex	Round	Rainier	S-E11R06-62H-R	\$77.90	M14 X .75	CN-ER11H-K	WR-ER11H
					Mini	Round	Veritru	S-E11R07-20N-E	\$94.05	M13 X .75	CN-ER11MN-V	WR-ER11MN
	0.750	3.50	0.63	0.44	Mini	Round	Einz	S-E11R07-35N-E	\$88.83	M13 X .75	CN-ER11MN-V	WR-ER11MN
					Mini	Round	Einz	S-E11R10-30N-E	\$109.73	M13 X .75	CN-ER11MN-V	WR-ER11MN

DIAL CALIPERS

- 4-way measuring
- Solid stainless steel construction
- Silky smooth movement throughout the entire range
- .100" range per revolution
- .001" reading dial face
- Supplied with inspection report and shop hardened case



Please See Pages 508-540 For Our Complete Selection Of Precision tools!



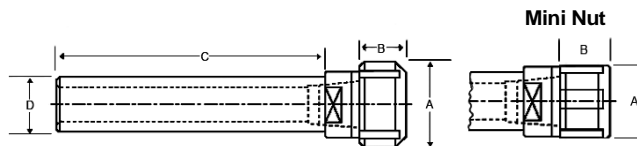
Range	Dial Face	Jaw Length	Thumbwheel	Part Number	Set Price
0-6"	Black	1.6"	Without	BS-46789	\$66.50
0-6"	White	1.6"	With	BS-46790	\$66.50
0-8"	White	2"	With	BS-46791	\$82.65
0-12"	White	2.5"	With	BS-46792	\$111.15

Call Us Today For All Of Your Machine Tool Needs!

ER STRAIGHT SHANK HOLDERS

ER-16 Collet Extensions

- Crafted from heat treated alloy steel
- Available with round or flatted shank
- Supplied with collet nut & backup screw



Collet Series	Shank Dia D	Shank Length C	Nut Dia A	Nut Length B	Nut Type	Shank Type	Brand	Part Number	Price Each	Thread of Nut	Collet Nut Part Number	Wrench Part Number
---------------	-------------	----------------	-----------	--------------	----------	------------	-------	-------------	------------	---------------	------------------------	--------------------

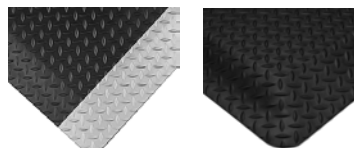
ER 16 Straight Shank Collet Holders

Collet Series	Shank Dia D	Shank Length C	Nut Dia A	Nut Length B	Nut Type	Shank Type	Brand	Part Number	Price Each	Thread of Nut	Collet Nut Part Number	Wrench Part Number
ER16	0.500	6.00	0.87	0.67	Mini	Round	Rainier	S-E16R05-60N-R	\$95.50	M19X1	CN-ER16MN-V	WR-ER16MN
					Mini	Round	Rainier	S-E16R06-30N-R	\$80.38	M19X1	CN-ER16MN-V	WR-ER16MN
		3.00	0.87	0.67	Hex	Round	Veritru	S-E16R06-30H-V	\$82.50	M22X1.5	CN-ER16H-K	WR-ER16H
					Hex	Round	Veritru	S-E16R06-30H-V	\$82.50	M22X1.5	CN-ER16H-K	WR-ER16H
		3.20	0.87	0.67	Mini	Flat	Veritru	S-E16F06-32N-V	\$82.50	M19X1	CN-ER16MN-V	WR-ER16MN
					Mini	Round	Veritru	S-E16R06-32N-V	\$82.50	M19X1	CN-ER16MN-V	WR-ER16MN
	3.76	1.10	0.67	Hex	Round	Rainier	S-E16R06-37H-R	\$73.50	M22X1.5	CN-ER16H-K	WR-ER16H	
				Hex	Round	Rainier	S-E16R06-37H-R	\$73.50	M22X1.5	CN-ER16H-K	WR-ER16H	
	0.625	6.00	0.87	0.67	Mini	Round	Rainier	S-E16R06-60N-R	\$90.83	M19X1	CN-ER16MN-V	WR-ER16MN
					Mini	Flat	Veritru	S-E16F06-60N-V	\$88.83	M19X1	CN-ER16MN-V	WR-ER16MN
		2.00	1.10	0.67	Mini	Round	Veritru	S-E16R06-60N-V	\$88.83	M19X1	CN-ER16MN-V	WR-ER16MN
					Hex	Round	Rainier	S-E16R07-20H-R	\$68.00	M22X1.5	CN-ER16H-K	WR-ER16H
		2.50	1.10	0.67	Hex	Flat	Veritru	S-E16F07-25H-V	\$68.20	M22X1.5	CN-ER16H-K	WR-ER16H
					Hex	Round	Rainier	S-E16R07-25H-R	\$68.00	M22X1.5	CN-ER16H-K	WR-ER16H
	Hex				Round	Veritru	S-E16R07-25H-V	\$66.00	M22X1.5	CN-ER16H-K	WR-ER16H	
	3.00	0.87	0.67	Mini	Round	Rainier	S-E16R07-30N-R	\$80.38	M19X1	CN-ER16MN-V	WR-ER16MN	
				Mini	Flat	Veritru	S-E16F07-32N-V	\$78.38	M19X1	CN-ER16MN-V	WR-ER16MN	
	0.750	3.20	0.87	0.67	Mini	Round	Veritru	S-E16R07-32N-V	\$78.38	M19X1	CN-ER16MN-V	WR-ER16MN
					Hex	Round	Rainier	S-E16R07-36H-R	\$68.00	M22X1.5	CN-ER16H-K	WR-ER16H
		3.65	1.10	0.67	Hex	Flat	Veritru	S-E16F07-40H-V	\$71.50	M22X1.5	CN-ER16H-K	WR-ER16H
					Hex	Round	Rainier	S-E16R07-40H-R	\$73.50	M22X1.5	CN-ER16H-K	WR-ER16H
		4.00	1.10	0.67	Hex	Round	Veritru	S-E16R07-40H-V	\$71.50	M22X1.5	CN-ER16H-K	WR-ER16H
					Mini	Flat	Veritru	S-E16F07-52N-V	\$88.83	M19X1	CN-ER16MN-V	WR-ER16MN
		5.20	0.87	0.67	Mini	Round	Rainier	S-E16R07-52N-R	\$96.05	M19X1	CN-ER16MN-V	WR-ER16MN
					Mini	Round	Veritru	S-E16R07-52N-V	\$88.83	M19X1	CN-ER16MN-V	WR-ER16MN
		6.00	1.10	0.67	Hex	Flat	Veritru	S-E16F07-60H-V	\$79.20	M22X1.5	CN-ER16H-K	WR-ER16H
					Hex	Round	Rainier	S-E16R07-60H-R	\$79.00	M22X1.5	CN-ER16H-K	WR-ER16H
					Hex	Round	Veritru	S-E16R07-60H-V	\$77.00	M22X1.5	CN-ER16H-K	WR-ER16H
		7.44	0.87	0.67	Mini	Round	Rainier	S-E16R07-74N-R	\$101.00	M19X1	CN-ER16MN-V	WR-ER16MN
	Mini				Round	Veritru	S-E16R07-75N-V	\$99.00	M19X1	CN-ER16MN-V	WR-ER16MN	
	1.000	7.50	0.87	0.67	Mini	Flat	Veritru	S-E16F07-75N-V	\$104.50	M19X1	CN-ER16MN-V	WR-ER16MN
					Hex	Flat	Veritru	S-E16F10-25H-V	\$66.00	M22X1.5	CN-ER16H-K	WR-ER16H
		2.50	1.10	0.67	Hex	Round	Rainier	S-E16R10-25H-R	\$68.00	M22X1.5	CN-ER16H-K	WR-ER16H
					Hex	Round	Veritru	S-E16R10-25H-V	\$66.00	M22X1.5	CN-ER16H-K	WR-ER16H
					Hex	Flat	Veritru	S-E16F10-40H-V	\$71.50	M22X1.5	CN-ER16H-K	WR-ER16H
		4.00	1.10	0.67	Hex	Round	Rainier	S-E16R10-40H-R	\$73.50	M22X1.5	CN-ER16H-K	WR-ER16H
					Hex	Round	Veritru	S-E16R10-40H-V	\$71.50	M22X1.5	CN-ER16H-K	WR-ER16H
		6.00	1.10	0.67	Hex	Flat	Veritru	S-E16F10-60H-V	\$77.00	M22X1.5	CN-ER16H-K	WR-ER16H
					Hex	Round	Rainier	S-E16R10-60H-R	\$79.00	M22X1.5	CN-ER16H-K	WR-ER16H
		6.00	1.10	0.67	Hex	Round	Veritru	S-E16R10-60H-V	\$77.00	M22X1.5	CN-ER16H-K	WR-ER16H

DIAMOND PLATE SPONGECOTE

Anti-Fatigue Mats-No. 415

Diamond-Plate SpongeCote is the most popular anti-fatigue mat in the industry because no other offers such a complete package of exceptional comfort, long life, and a high-tech, industrial image. Exceptionally resilient Nitricell sponge base defines the mat by providing true comfort, enhancing productivity, and reviving morale, all while relieving fatigue throughout the day. The safety-engineered surface adds traction and durability, and is ideal for high traffic areas.



- For use in dry work areas
- Anti-fatigue
- Nitricell sponge base for unparalleled comfort
- Safety beveled edges
- Slip and wear resistant
- 3 Year Warranty

We Offer A Large Variety Of Safety & Anti-Fatigue Mats!
Please See Pages 575-577 For More Information!

Size	Thickness	Color	Part Number	Price
2' x 3'	9/16"	Black	WW-415916-2-3BK	\$41.84
		Blk/Yellow	WW-415916-2-3BY	\$47.68
3' x 5'	9/16"	Black	WW-415916-3-5BK	\$101.76
		Blk/Yellow	WW-415916-3-5BY	\$109.76

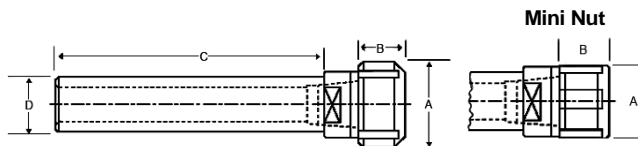
Call Us Or Visit Our Website For Our Complete Selection!

ER STRAIGHT SHANK HOLDERS

ER-20 & 25 Collet Extensions



- Crafted from heat treated alloy steel
- Available with round or flatted shank
- Supplied with collet nut & backup screw
- Mini nut also available



Collet Series	Shank Dia D	Shank Length C	Nut Dia A	Nut Length B	Nut Type	Shank Type	Brand	Part Number	Price Each	Thread of Nut	Collet Nut Part Number	Wrench Part Number
---------------	-------------	----------------	-----------	--------------	----------	------------	-------	-------------	------------	---------------	------------------------	--------------------

ER 20 Straight Shank Collet Holders

ER20	0.750	2.50	1.10	0.75	Mini	Flat	Veritru	S-E20F07-25N-V	\$68.20	M24X1	CN-ER20MN-V	WR-ER20MN	
					Mini	Round	Veritru	S-E20R07-25N-V	\$66.00	M24X1	CN-ER20MN-V	WR-ER20MN	
			1.34	0.75	Hex	Round	Rainier	S-E20R07-25H-R	\$68.00	M25X1.5	CN-ER20H-K	WR-ER20H	
					Hex	Flat	Veritru	S-E20F07-25H-V	\$66.00	M25X1.5	CN-ER20H-K	WR-ER20H	
		4.00	1.10	0.75	Mini	Flat	Veritru	S-E20F07-40N-V	\$73.70	M24X1	CN-ER20MN-V	WR-ER20MN	
					Mini	Round	Veritru	S-E20R07-40N-V	\$94.05	M24X1	CN-ER20MN-V	WR-ER20MN	
			1.34	0.75	Hex	Round	Rainier	S-E20R07-40H-R	\$73.50	M25X1.5	CN-ER20H-K	WR-ER20H	
					Hex	Round	Veritru	S-E20R07-40H-V	\$77.00	M25X1.5	CN-ER20H-K	WR-ER20H	
		6.00	1.34	0.75	Hex	Flat	Veritru	S-E20F07-60H-V	\$79.20	M25X1.5	CN-ER20H-K	WR-ER20H	
					Hex	Round	Rainier	S-E20R07-60H-R	\$79.00	M25X1.5	CN-ER20H-K	WR-ER20H	
					Hex	Round	Veritru	S-E20R07-60H-V	\$77.00	M25X1.5	CN-ER20H-K	WR-ER20H	
			2.50	1.10	0.75	Mini	Flat	Veritru	S-E20F10-25N-V	\$66.00	M24X1	CN-ER20MN-V	WR-ER20MN
	Hex					Flat	Veritru	S-E20F10-25H-V	\$66.00	M25X1.5	CN-ER20H-K	WR-ER20H	
	1.34			0.75	Hex	Round	Rainier	S-E20R10-25H-R	\$68.00	M25X1.5	CN-ER20H-K	WR-ER20H	
		Hex	Round		Veritru	S-E20R10-25H-V	\$66.00	M25X1.5	CN-ER20H-K	WR-ER20H			
	1.000	4.00	1.34	0.75	Hex	Flat	Veritru	S-E20F10-40H-V	\$73.70	M25X1.5	CN-ER20H-K	WR-ER20H	
					Hex	Round	Rainier	S-E20R10-40H-R	\$73.50	M25X1.5	CN-ER20H-K	WR-ER20H	
					Hex	Round	Veritru	S-E20R10-40H-V	\$71.50	M25X1.5	CN-ER20H-K	WR-ER20H	
			5.20	1.10	0.75	Mini	Round	Rainier	S-E20R10-52N-R	\$84.50	M24X1	CN-ER20MN-V	WR-ER20MN
						Mini	Flat	Veritru	S-E20F10-52N-V	\$82.50	M24X1	CN-ER20MN-V	WR-ER20MN
						Mini	Round	Veritru	S-E20R10-52N-V	\$82.50	M24X1	CN-ER20MN-V	WR-ER20MN
		5.50	1.10	0.75	Mini	Round	Rainier	S-E20R10-55N-R	\$116.95	M24X1	CN-ER20MN-V	WR-ER20MN	
					Hex	Flat	Veritru	S-E20F10-60H-V	\$77.00	M25X1.5	CN-ER20H-K	WR-ER20H	
					Hex	Round	Rainier	S-E20R10-60H-R	\$79.00	M25X1.5	CN-ER20H-K	WR-ER20H	
6.00		1.34	0.75	Hex	Round	Veritru	S-E20R10-60H-V	\$77.00	M25X1.5	CN-ER20H-K	WR-ER20H		

ER 25 Straight Shank Collet Holders

ER25	0.750	0.500	4.00	1.65	0.79	Spanner	Round	Rainier	S-E25R05-40S-R	\$79.00	M32X1.5	CN-ER25S-K	WR-ER25S		
						Spanner	Flat	Veritru	S-E25F07-25S-V	\$71.50	M32X1.5	CN-ER25S-K	WR-ER25S		
		2.50	1.65	0.79	Spanner	Round	Rainier	S-E25R07-25S-R	\$73.50	M32X1.5	CN-ER25S-K	WR-ER25S			
					Spanner	Round	Veritru	S-E25R07-25S-V	\$71.50	M32X1.5	CN-ER25S-K	WR-ER25S			
					Spanner	Flat	Veritru	S-E25F07-40S-V	\$77.00	M32X1.5	CN-ER25S-K	WR-ER25S			
					Spanner	Round	Rainier	S-E25R07-40S-R	\$79.00	M32X1.5	CN-ER25S-K	WR-ER25S			
		4.00	1.65	0.79	Spanner	Round	Veritru	S-E25R07-40S-V	\$77.00	M32X1.5	CN-ER25S-K	WR-ER25S			
					Spanner	Flat	Veritru	S-E25F07-60S-V	\$84.70	M32X1.5	CN-ER25S-K	WR-ER25S			
					Spanner	Round	Rainier	S-E25R07-60S-R	\$84.50	M32X1.5	CN-ER25S-K	WR-ER25S			
					Spanner	Round	Veritru	S-E25R07-60S-V	\$82.50	M32X1.5	CN-ER25S-K	WR-ER25S			
					2.50	1.38	0.79	Mini	Flat	Veritru	S-E25F10-25N-V	\$71.50	M30X1	CN-ER25MN-V	WR-ER25MN
								Spanner	Flat	Veritru	S-E25F10-25S-V	\$71.50	M32X1.5	CN-ER25S-K	WR-ER25S
	1.65	0.79	Spanner	Round		Rainier	S-E25R10-25S-R	\$73.50	M32X1.5	CN-ER25S-K	WR-ER25S				
			Spanner	Round		Veritru	S-E25R10-25S-V	\$71.50	M32X1.5	CN-ER25S-K	WR-ER25S				
	1.000	4.00	1.38	0.79	Mini	Flat	Veritru	S-E25F10-40N-V	\$104.50	M30X1	CN-ER25MN-V	WR-ER25MN			
					Mini	Round	Rainier	S-E25R10-40N-R	\$106.50	M30X1	CN-ER25MN-V	WR-ER25MN			
					Mini	Round	Veritru	S-E25R10-40N-V	\$104.50	M30X1	CN-ER25MN-V	WR-ER25MN			
			1.65	0.79	Spanner	Flat	Veritru	S-E25F10-40S-V	\$77.00	M32X1.5	CN-ER25S-K	WR-ER25S			
					Spanner	Round	Rainier	S-E25R10-40S-R	\$79.00	M32X1.5	CN-ER25S-K	WR-ER25S			
					Spanner	Round	Veritru	S-E25R10-40S-V	\$77.00	M32X1.5	CN-ER25S-K	WR-ER25S			
		6.00	1.65	0.79	Spanner	Flat	Veritru	S-E25F10-60S-V	\$82.50	M32X1.5	CN-ER25S-K	WR-ER25S			
					Spanner	Round	Rainier	S-E25R10-60S-R	\$84.50	M32X1.5	CN-ER25S-K	WR-ER25S			
					Spanner	Round	Veritru	S-E25R10-60S-V	\$82.50	M32X1.5	CN-ER25S-K	WR-ER25S			

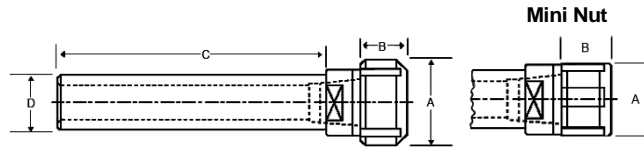
Call Us Today For All Of Your Machine Tool Needs!

2010-11 Master Catalog

ER STRAIGHT SHANK HOLDERS

ER-32 & 40 Collet Extensions

- Crafted from heat treated alloy steel
- Available with round or flatted shank
- Supplied with collet nut & backup screw



LATHE CHUCKS
LIVE CENTERS

WISE JAWS
WISE ACCESSORIES

STRAIGHT SHANK
COLLET HOLDERS

LATHE BUSHINGS
DRILL CHUCKS

CARBIDE INSERTS
THREADING/GROOVING

CUTTING TOOLS
MACHINERY

PRECISION TOOLS
DEBURRING

COOLANT/FLUIDS
TOOL STORAGE

Collet Series	Shank Dia D	Shank Length C	Nut Dia A	Nut Length B	Nut Type	Shank Type	Brand	Part Number	Price Each	Thread of Nut	Collet Nut Part Number	Wrench Part Number
---------------	-------------	----------------	-----------	--------------	----------	------------	-------	-------------	------------	---------------	------------------------	--------------------

ER 32 Straight Shank Collet Holders

ER 32	1.000	2.00	1.97	0.87	Spanner	Round	Rainier	S-E32R10-20S-R	\$79.00	M40X1.4	CN-ER32S-K	WR-ER32S
		2.50	1.97	0.87	Spanner	Flat	Veritru	S-E32F10-25S-V	\$77.00	M40X1.4	CN-ER32S-K	WR-ER32S
		2.50	1.97	0.87	Spanner	Round	Rainier	S-E32R10-25S-R	\$79.00	M40X1.4	CN-ER32S-K	WR-ER32S
		2.50	1.97	0.87	Spanner	Round	Veritru	S-E32R10-25S-V	\$77.00	M40X1.4	CN-ER32S-K	WR-ER32S
		4.00	1.97	0.87	Spanner	Flat	Veritru	S-E32F10-40S-V	\$82.50	M40X1.4	CN-ER32S-K	WR-ER32S
		4.00	1.97	0.87	Spanner	Round	Rainier	S-E32R10-40S-R	\$84.50	M40X1.4	CN-ER32S-K	WR-ER32S
	1.250	2.00	1.97	0.87	Spanner	Round	Rainier	S-E32R12-20S-R	\$79.00	M40X1.4	CN-ER32S-K	WR-ER32S
					Spanner	Round	Rainier	S-E32R12-25S-R	\$79.00	M40X1.4	CN-ER32S-K	WR-ER32S
		2.50	1.97	0.87	Spanner	Flat	Veritru	S-E32F12-25S-V	\$77.00	M40X1.4	CN-ER32S-K	WR-ER32S
					Spanner	Round	Veritru	S-E32R12-25S-V	\$77.00	M40X1.4	CN-ER32S-K	WR-ER32S
		4.00	1.97	0.87	Spanner	Flat	Veritru	S-E32F12-40S-V	\$82.50	M40X1.4	CN-ER32S-K	WR-ER32S
					Spanner	Round	Rainier	S-E32R12-40S-R	\$84.50	M40X1.4	CN-ER32S-K	WR-ER32S
	6.00	1.97	0.87	Spanner	Round	Veritru	S-E32R12-40S-V	\$82.50	M40X1.4	CN-ER32S-K	WR-ER32S	
				Spanner	Flat	Veritru	S-E32F12-60S-V	\$88.00	M40X1.4	CN-ER32S-K	WR-ER32S	
	6.00	1.97	0.87	Spanner	Round	Rainier	S-E32R12-60S-R	\$90.00	M40X1.4	CN-ER32S-K	WR-ER32S	
				Spanner	Round	Veritru	S-E32R12-60S-V	\$88.00	M40X1.4	CN-ER32S-K	WR-ER32S	
	1.500	6.00	1.97	0.87	Spanner	Round	Veritru	S-E32R15-62S-V	\$121.00	M40X1.4	CN-ER32S-K	WR-ER32S

ER 40 Straight Shank Collet Holders

ER 40	1.000	2.50	2.48	0.98	Spanner	Flat	Veritru	S-E40F10-25S-V	\$90.20	M50X1.5	CN-ER40S-K	WR-ER40S
					Spanner	Round	Rainier	S-E40R10-25S-R	\$90.00	M50X1.5	CN-ER40S-K	WR-ER40S
					Spanner	Round	Veritru	S-E40R10-25S-V	\$88.00	M50X1.5	CN-ER40S-K	WR-ER40S
		4.00	2.48	0.98	Spanner	Flat	Veritru	S-E40F10-40S-V	\$95.70	M50X1.5	CN-ER40S-K	WR-ER40S
					Spanner	Round	Rainier	S-E40R10-40S-R	\$95.50	M50X1.5	CN-ER40S-K	WR-ER40S
					Spanner	Round	Veritru	S-E40R10-40S-V	\$93.50	M50X1.5	CN-ER40S-K	WR-ER40S
	6.00	2.48	0.98	Spanner	Round	Rainier	S-E40R10-60S-R	\$101.00	M50X1.5	CN-ER40S-K	WR-ER40S	
				Spanner	Round	Veritru	S-E40R10-60S-V	\$99.00	M50X1.5	CN-ER40S-K	WR-ER40S	
				Spanner	Flat	Veritru	S-E40F12-25S-V	\$90.20	M50X1.5	CN-ER40S-K	WR-ER40S	
	1.250	2.50	2.48	0.98	Spanner	Round	Rainier	S-E40R12-25S-R	\$90.00	M50X1.5	CN-ER40S-K	WR-ER40S
					Spanner	Round	Veritru	S-E40R12-25S-V	\$88.00	M50X1.5	CN-ER40S-K	WR-ER40S
					Spanner	Flat	Veritru	S-E40F12-40S-V	\$95.70	M50X1.5	CN-ER40S-K	WR-ER40S
		4.00	2.48	0.98	Spanner	Round	Rainier	S-E40R12-40S-R	\$95.50	M50X1.5	CN-ER40S-K	WR-ER40S
					Spanner	Round	Veritru	S-E40R12-40S-V	\$93.50	M50X1.5	CN-ER40S-K	WR-ER40S
					Spanner	Flat	Veritru	S-E40F12-60S-V	\$101.20	M50X1.5	CN-ER40S-K	WR-ER40S
	6.00	2.48	0.98	Spanner	Round	Rainier	S-E40R12-60S-R	\$101.00	M50X1.5	CN-ER40S-K	WR-ER40S	
				Spanner	Round	Veritru	S-E40R12-60S-V	\$99.00	M50X1.5	CN-ER40S-K	WR-ER40S	
				Spanner	Round	Veritru	S-E40R12-60S-V	\$99.00	M50X1.5	CN-ER40S-K	WR-ER40S	

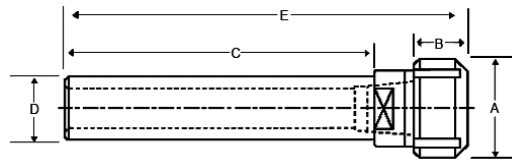
Call Us Or Visit Our Website For Our Complete Selection!

COLLET EXTENSIONS/STRAIGHT SHANK HOLDERS

TG STRAIGHT SHANK HOLDERS

TG Series Collet Extensions

- Crafted from heat treated alloy steel
- Available with round or flattened shank
- Supplied with collet nut & backup screw

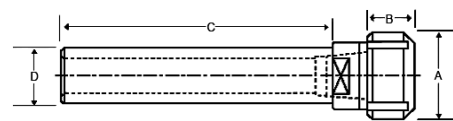


Collet Series	Shank D	C	OAL	Nut Dia	Length of Nut	Type of Nut	Shank Type	Part Number	Price Each	Collet Nut Part Number	Wrench Part Number	Code
TG 75	0.750	2.75	5.79	2.10	2.44	HEX	Flat	S-T75F07-27H-G	\$234.40	CN-TG75-K	WR-TG75-K	D
		2.75	5.79	2.10	2.44	HEX	Flat	S-T75F07-27H-K	\$187.52	CN-TG75-K	WR-TG75-K	E
	1.000	2.75	5.79	2.10	2.44	HEX	Flat	S-T75F10-27H-G	\$244.80	CN-TG75-K	WR-TG75-K	D
		2.75	5.79	2.10	2.44	HEX	Flat	S-T75F10-27H-K	\$195.84	CN-TG75-K	WR-TG75-K	E
	1.250	3.25	6.30	2.10	2.44	HEX	Flat	S-T75F12-32H-G	\$253.60	CN-TG75-K	WR-TG75-K	D
		3.25	6.30	2.10	2.44	HEX	Flat	S-T75F12-32H-K	\$202.88	CN-TG75-K	WR-TG75-K	E
		6.00	8.50	2.10	2.44	HEX	Round	S-T75R12-60H-K	\$225.00	CN-TG75-K	WR-TG75-K	E
	1.500	3.37	6.42	2.10	2.44	HEX	Flat	S-T75F15-33H-G	\$261.20	CN-TG75-K	WR-TG75-K	D
		3.37	6.42	2.10	2.44	HEX	Flat	S-T75F15-33H-K	\$208.96	CN-TG75-K	WR-TG75-K	E
		6.00	7.80	2.10	2.44	HEX	Round	S-T75R15-60H-K	\$235.00	CN-TG75-K	WR-TG75-K	E
	1.750	3.50	6.54	2.10	2.44	HEX	Flat	S-T75F17-35H-G	\$263.20	CN-TG75-K	WR-TG75-K	D
		3.50	6.54	2.10	2.44	HEX	Flat	S-T75F17-35H-K	\$210.56	CN-TG75-K	WR-TG75-K	E
2.000	4.00	7.05	2.10	2.44	HEX	Flat	S-T75F20-40H-G	\$270.40	CN-TG75-K	WR-TG75-K	D	
	4.00	7.05	2.10	2.44	HEX	Flat	S-T75F20-40H-K	\$216.32	CN-TG75-K	WR-TG75-K	E	
TG 100	0.750	2.75	5.98	2.44	1.41	HEX	Flat	S-T10F07-27H-G	\$234.40	CN-TG100-K	WR-TG100-K	D
		2.75	5.98	2.44	1.41	HEX	Flat	S-T10F07-27H-K	\$187.52	CN-TG100-K	WR-TG100-K	E
	1.000	2.75	5.98	2.44	1.41	HEX	Flat	S-T10F10-27H-G	\$244.80	CN-TG100-K	WR-TG100-K	D
		2.75	5.98	2.44	1.41	HEX	Flat	S-T10F10-27H-K	\$195.84	CN-TG100-K	WR-TG100-K	E
	1.250	3.25	6.50	2.44	1.41	HEX	Flat	S-T10F12-32H-G	\$253.60	CN-TG100-K	WR-TG100-K	D
		3.25	6.50	2.44	1.41	HEX	Flat	S-T10F12-32H-K	\$202.88	CN-TG100-K	WR-TG100-K	E
		6.00	9.30	2.44	1.41	HEX	Round	S-T10R12-60H-K	\$225.00	CN-TG100-K	WR-TG100-K	E
	1.500	3.37	6.61	2.44	1.41	HEX	Flat	S-T10F15-33H-G	\$261.20	CN-TG100-K	WR-TG100-K	D
		3.37	6.61	2.44	1.41	HEX	Flat	S-T10F15-33H-K	\$208.96	CN-TG100-K	WR-TG100-K	E
		6.00	9.30	2.44	1.41	HEX	Round	S-T10R15-60H-K	\$235.00	CN-TG100-K	WR-TG100-K	E
	1.750	3.50	6.73	2.44	1.41	HEX	Flat	S-T10F17-35H-G	\$263.20	CN-TG100-K	WR-TG100-K	D
		3.50	6.73	2.44	1.41	HEX	Flat	S-T10F17-35H-K	\$210.56	CN-TG100-K	WR-TG100-K	E
6.00		8.20	2.44	1.41	HEX	Round	S-T10R17-60H-K	\$245.00	CN-TG100-K	WR-TG100-K	E	
2.000	4.00	7.24	2.44	1.41	HEX	Flat	S-T10F20-40H-G	\$270.40	CN-TG100-K	WR-TG100-K	D	
	4.00	7.24	2.44	1.41	HEX	Flat	S-T10F20-40H-K	\$216.32	CN-TG100-K	WR-TG100-K	E	
	6.00	8.20	2.44	1.41	HEX	Round	S-T10R20-60H-K	\$255.00	CN-TG100-K	WR-TG100-K	E	
TG 150	1.750	8.00	11.70	-	-	HEX	Round	S-T15R17-80H-K	\$270.00	CN-TG150-K	WR-TG150-K	E
	2.000	8.00	11.70	-	-	HEX	Round	S-T15R20-80H-K	\$270.00	CN-TG150-K	WR-TG150-K	E

AF STRAIGHT SHANK HOLDERS

AF Series Collet Extensions

- Fits Acura-Flex™ (AF) collets
- Crafted from heat treated alloy steel
- Available with round shank
- Supplied with hex collet nut & backup screw



Collet Series	Shank D	C	Nut Dia	Length of Nut	Type of Nut	Shank Type	Part Number	Price Each	Collet Nut Part Number	Thread Of Nut	Nut Industry Reference #
AF 25	0.500	5.50	0.73	0.54	HEX	Round	S-A25R05-55H-R	\$99.00	CN-AF25H	9/16-28	C9400022
	0.750	5.50	0.73	0.54	HEX	Round	S-A25R07-55H-R	\$99.00	CN-AF25H	9/16-28	C9400022
AF 38	0.625	4.00	1.06	0.62	HEX	Round	S-A38R06-40H-R	\$76.50	CN-AF38H	13/16-12	C9400002
	0.750	4.00	1.06	0.62	HEX	Round	S-A38R07-40H-R	\$85.00	CN-AF38H	13/16-12	C9400002
	0.750	5.50	1.06	0.62	HEX	Round	S-A38R07-55H-R	\$99.00	CN-AF38H	13/16-12	C9400002
AF 50	0.750	4.00	1.34	0.69	HEX	Round	S-A50R07-40H-R	\$80.00	CN-AF50H	1"-12	C9400020
	0.750	6.00	1.34	0.69	HEX	Round	S-A50R07-60H-R	\$99.00	CN-AF50H	1"-12	C9400020
	0.750	7.50	1.34	0.69	HEX	Round	S-A50R07-75H-R	\$115.00	CN-AF50H	1"-12	C9400020
	1.000	4.00	1.34	0.69	HEX	Round	S-A50R10-40H-R	\$75.00	CN-AF50H	1"-12	C9400020
	1.000	6.00	1.34	0.69	HEX	Round	S-A50R10-60H-R	\$85.00	CN-AF50H	1"-12	C9400020
AF 75	1.000	4.50	1.96	1.06	HEX	Round	S-A75R10-45H-R	\$75.00	CN-AF75H	1-1/2"-12	C900005
	1.250	5.50	1.96	1.06	HEX	Round	S-A75R12-55H-R	\$110.00	CN-AF75H	1-1/2"-12	C900005
AF 100	1.250	5.00	2.48	1.19	HEX	Round	S-A10R12-50H-R	\$75.00	CN-AF100H	2"-12	C940021
	1.500	6.50	2.48	1.19	HEX	Round	S-A10R15-65H-R	\$135.00	CN-AF100H	2"-12	C940021

Call Us Today For All Of Your Machine Tool Needs!

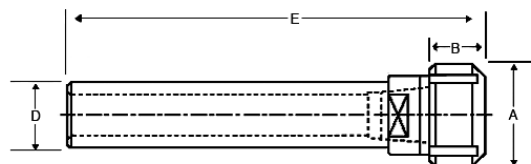
COLLET EXTENSIONS/STRAIGHT SHANK HOLDERS

E

DA STRAIGHT SHANK HOLDERS

DA Series Collet Extensions

- Fits standard double angle (DA) collets
- Crafted from heat treated alloy steel
- Available with round shank
- Supplied with hex collet nut & backup screw



Collet Series	Shank D	C	OAL	Max Dia Thru Shank	Nut Dia	Length of Nut	Part Number	Price Each	Collet Nut Part Number	Wrench Hex Size	Nut Thread
DA 100	1.000	3.00	4.00	9/16 .586	1.06 1.43	0.900 0.900	S-D10R10-30H-F S-D10R10-30H-K	\$65.70 \$65.70	CN-DA10S10-F CN-DA10S09-K	7/8 1-1/4	- 1"-14
		5.62	7.30	9/16 .590	1.06 1.43	1.540 0.900	S-D10R10-56H-F S-D10R10-56H-K	\$65.70 \$65.70	CN-DA10E10-F CN-DA10S09-K	7/8 1-1/4	- 1"-14
		1.000	5.00	6.20	3/4 .668	1.56 1.72	0.870 0.900	S-D18R10-50H-F S-D18R10-50H-K	\$88.20 \$88.20	CN-DA18S18-F CN-DA18S09-K	1-3/8 1-1/2
DA 180	1.250	5.00	6.20	3/4 .718	1.56 1.72	0.870 0.900	S-D18R12-50H-F S-D18R12-50H-K	\$81.90 \$81.90	CN-DA18S18-F CN-DA18S09-K	1-3/8 1-1/2	- 1-1/4"-12
				1.500	5.00	6.20	3/4 .866	1.56 1.72	0.870 0.900	S-D18R15-50H-F S-D18R15-50H-K	\$89.10 \$89.10
	1.750	5.00	6.20	3/4 .866	1.56 1.72	0.870 0.900	S-D18R17-50H-F S-D18R17-50H-K	\$95.40 \$95.40	CN-DA18S18-F CN-DA18S09-K	1-3/8 1-1/2	- 1-1/4"-12
				0.625	3.00	3.75	3/8 .453	0.75 1.14	0.710 0.758	S-D20R06-30H-F S-D20R06-30H-K	\$54.90 \$54.90
DA 200	0.750	3.00	3.80	3/8 .478	0.81 1.14	0.710 0.758	S-D20R07-30H-F S-D20R07-30H-K	\$61.20 \$61.20	CN-DA20S07-F CN-DA20S07-K	3/4 1	- 3/4"-16
				5.62	7.10	3/8 .478	0.81 1.14	1.340 0.758	S-D20R07-56H-F S-D20R07-56H-K	\$61.20 \$61.20	CN-DA20E07-F CN-DA20S07-K
	0.500	2.75	3.60	1/4 .343	0.56 0.76	0.700 0.729	S-D30R05-27H-F S-D30R05-27H-K	\$50.40 \$50.40	CN-DA30S05-F CN-DA30S07-K	1/2 11/16	- 9/16"-18
5.62				6.80	1/4 .343	0.56 0.76	1.000 0.729	S-D30R05-56H-F S-D30R05-56H-K	\$50.40 \$50.40	CN-DA30E05-F CN-DA30S07-K	1/2 11/16
DA 300	0.625	3.20	3.75	1/4 .343	0.56 0.76	0.700 0.729	S-D30R06-32H-F S-D30R06-32H-K	\$54.90 \$54.90	CN-DA30S05-F CN-DA30S07-K	1/2 11/16	- 9/16"-18

LATHE CHUCKS
LIVE CENTERS

VICE ACCESSORIES
VICE JAWS

STRAIGHT SHANK
COLLET HOLDERS

LATHE BUSHINGS
DRILL CHUCKS

CARBIDE INSERTS
THREADING/GROOVING

CUTTING TOOLS
MACHINERY

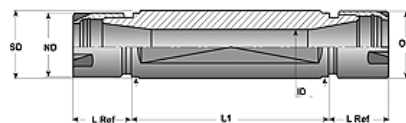
PRECISION TOOLS
DEBURRING

COOLANT/FLUIDS
TOOL STORAGE

DOUBLE ENDED STRAIGHT SHANK HOLDERS

ER Series Collet Extensions

- Ideal for Swiss Machines
- Available in Inch and Metric shank sizes
- Comes complete with collet nuts (wrench sold separately)



Collet Series	Shank Dia. (SD)	Shank Len (mm) (L1)	OAL (mm)	Nut Dia (ND)	Nut Length	Part Number	Price Each	Thread of Nut	Collet Nut Part Number	Wrench Part Number
ER08	5/8"	15	45	0.48"	0.44"	D-E08F06-15N-R	\$142.50	M10X.75	CN-ER08MN-V	WR-ER08MN
	5/8"	25	55	0.48"	0.44"	D-E08F06-25N-R	\$146.25	M10X.75	CN-ER08MN-V	WR-ER08MN
ER11	16mm	40	79	0.63"	0.44"	D-E11F16M40N-R	\$126.75	M13X.75	CN-ER11MN-R	WR-ER11MN
		50	90	0.63"	0.44"	D-E11F16M50N-R	\$148.88	M13X.75	CN-ER11MN-R	WR-ER11MN
	3/4"	25	65	0.63"	0.44"	D-E11F07-25N-R	\$122.25	M13X.75	CN-ER11MN-R	WR-ER11MN
		40	80	0.63"	0.44"	D-E11F07-40N-R	\$122.25	M13X.75	CN-ER11MN-R	WR-ER11MN
		70	110	0.63"	0.44"	D-E11F07-70N-R	\$122.25	M13X.75	CN-ER11MN-R	WR-ER11MN
	3/4"	90	130	0.63"	0.44"	D-E11F07-90N-R	\$122.25	M13X.75	CN-ER11MN-R	WR-ER11MN
ER16	20mm	30	70	0.63"	0.44"	D-E11F20M30N-R	\$139.50	M13X.75	CN-ER11MN-R	WR-ER11MN
		50	90	0.63"	0.44"	D-E11F20M50N-R	\$141.00	M13X.75	CN-ER11MN-R	WR-ER11MN
		70	109	0.63"	0.44"	D-E11F20M70N-R	\$149.00	M13X.75	CN-ER11MN-R	WR-ER11MN
	3/4"	55	107	0.87"	0.67"	D-E16F07-55N-R	\$148.50	M19X1	CN-ER16MN-R	WR-ER16MN
		30	85	0.87"	0.67"	D-E16F20M30N-R	\$148.50	M19X1	CN-ER16MN-R	WR-ER16MN
		55	107	0.87"	0.67"	D-E16F20M55N-R	\$156.75	M19X1	CN-ER16MN-R	WR-ER16MN
		55	111	0.87"	0.67"	D-E16F22M55N-R	\$149.00	M19X1	CN-ER16MN-R	WR-ER16MN
22mm	75	131	0.87"	0.67"	D-E16F22M75N-R	\$151.50	M19X1	CN-ER16MN-R	WR-ER16MN	
25mm	36	92	0.87"	0.67"	D-E16F25M36N-R	\$149.00	M19X1	CN-ER16MN-R	WR-ER16MN	
	62	118	0.87"	0.67"	D-E16F25M62N-R	\$151.50	M19X1	CN-ER16MN-R	WR-ER16MN	
ER20	1"	30	85	0.87"	0.67"	D-E16F10-30N-R	\$151.50	M19X1	CN-ER16MN-R	WR-ER16MN
		62	118	0.87"	0.67"	D-E16F10-62N-R	\$151.50	M19X1	CN-ER16MN-R	WR-ER16MN
ER20	25mm	36	92	1.10"	0.75"	D-E20F25M36N-R	\$125.00	M24X1	CN-ER20MN-R	WR-ER20MN
		66	122	1.10"	0.75"	D-E20F25M66N-R	\$125.00	M24X1	CN-ER20MN-R	WR-ER20MN
	32mm	55	111	1.10"	0.75"	D-E20F32M55N-R	\$135.00	M24X1	CN-ER20MN-R	WR-ER20MN
		75	131	1.10"	0.75"	D-E20F32M75N-R	\$135.00	M24X1	CN-ER20MN-R	WR-ER20MN

Call Us Or Visit Our Website For Our Complete Selection!

2010-11 Master Catalog

173