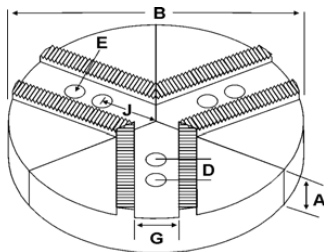
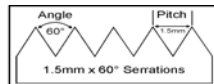


ROUND JAWS- 1.5 mm x 60° Serrations

FOR USE ON: **Kitagawa, Samchully, Strong, MMK, SMW Autoblok, Howa & Hitachi-Seiki Chucks**



- Round Jaws allow for complete gripping of workpiece
- Oversized jaws available
- Ideal for thin-walled or irregular shaped workpieces.
- Can be machined to fit workpiece
- Special "J" dimensions available
- Available in Aluminum, Cast Iron & Steel
- **Made in the USA**



Group



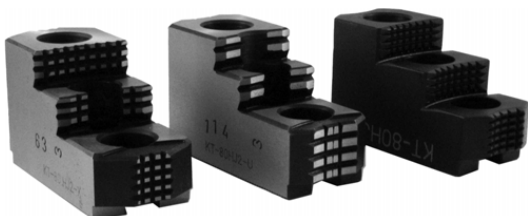
Group No.	Chuck Size	Critical Dimensions			Hole to Front J	Pie Dia B	Height Inch A	Industry Ref #	ALUMINUM		CAST IRON		STEEL	
		Groove Width G	Screw Size E	Hole Space D					Part Number	Price Set of 3	Part Number	Price Set of 3	Part Number	Price Set of 3
K1-11-20	6	0.433 (11mm)	10mm	0.787 (20mm)	1.625	6	2.00	-	RHO-6200A	\$69.10	RHO-6200CI	\$89.60	RHO-6200S	\$161.92
							3.00	-	RHO-6300A	\$94.14	RHO-6300CI	\$140.79	RHO-6300S	\$206.08
							4.00	-	RHO-6400A	\$108.34	RHO-6400CI*	\$153.59	RHO-6400S	\$250.24
							8	2.00	-	8-RHO-6200A	\$103.98	8-RHO-6200CI	\$115.20	-
K1-11-25	6	0.433 (11mm)	8mm	0.985 (25mm)	1.625	6	2.00	SUG6PSTS	RSG-6200A	\$64.00	RSG-6200CI	\$89.60	RSG-6200S*	\$161.92
							3.00	-	RSG-6300A	\$94.14	RSG-6300CI	\$140.79	RSG-6300S	\$206.08
							4.00	SUG6P1STS	RSG-6400A	\$99.50	-	-	RSG-6400S	\$250.24
							8	2.00	-	8-RSG-6200A	\$91.50	8-RSG-6200CI	\$115.20	8-RSG-6200S
K1-12-20	6	0.472 (12mm)	10mm	0.787 (20mm)	1.625	6	2.00	AKT6FG	RKT-6200A	\$63.12	RKT-6200CI	\$89.60	RKT-6200S	\$161.92
							3.00	AKT6MHFG	RKT-6300A	\$94.14	RKT-6300CI	\$140.79	RKT-6300S	\$206.08
							4.00	KTT6P1	RKT-6400A	\$97.89	-	-	RKT-6400S	\$250.24
							8	2.00	KTT8-6P	8-RKT-6200A	\$91.50	8-RKT-6200CI	\$115.20	8-RKT-6200S
K1-14-20	6	0.551 (14mm)	10mm	0.790 (20mm)	1.625	6	2.00	-	RNK-6200A	\$69.10	RNK-6200CI	\$89.60	RNK-6200S	\$161.92
							3.00	-	RNK-6300A	\$94.14	RNK-6300CI	\$140.79	RNK-6300S	\$170.66
							4.00	-	RNK-6400A	\$108.34	-	-	RNK-6400S	\$207.23
							10	2.00	-	10-RSG-6200A	\$136.45	-	-	-

Round Jaw Material: ALUMINUM-6061-T6 Bar Stock, CAST IRON-Gray, STEEL-1018

For complete list of applicable chucks, see pages 632-644.

* denotes non-stock item. Please allow 1 week manufacturing time.

HARD JAWS



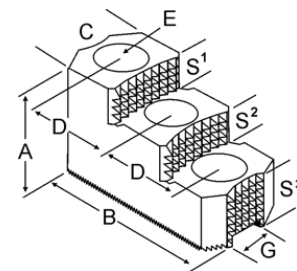
XTRA BITE (-X)

GRIP-RITE (-U)

SHARK JAW

FEATURES:

- Designed for first operation roughing, expect standard runout between 0.005-0.010
- Reversible-suitable for OD & ID workholding.
- **XTRA BITE** -very aggressive bite. Has conical teeth for extra gripping power and ground body to provide improved runout.
- **GRIP-RITE-OEM Style** hard jaws have ground tips and provide better runout.
- **SHARK JAWS** have conical teeth for extra gripping power and black oxide for long life. Ideal for castings and scaly material.Made in the USA.
- 1 & 2 step jaws available.



Group Number	Chuck Size	Critical Dimensions			Width Inch C	OAL Inch B	Height Inch A	No. of Holes	No. of Steps	Top Step Ht S1	Mid Step Ht S2	Bot Step Ht S3	Part Number	Price Per Set	Style	Code
		Groove Width G	Screw Size E	Hole Space D												
K1-11-20	6	0.433 (11mm)	10mm	0.787 (20mm)	1.250	2.900	2.000	3	2	0.500	0.500	1.000	HO-60HJ2	\$352.00	Shark Jaws	D
K1-11-25	6	0.433 (11mm)	8mm	0.985 (25mm)	1.250	3.000	1.969	3	2	0.500	0.500	0.969	SG-60HJ2-X	\$285.00	Xtra-bite	E
K1-12-20	6	0.472 (12mm)	10mm	0.787 (20mm)	1.220	2.900	2.000	3	1	0.500	-	1.000	KT-60HJ1	\$289.91	Shark Jaws	D
					1.220	2.646	1.423	3	1	0.359	-	1.064	KT-60HJ1-U	\$252.94	OEM Style	E
					1.250	3.000	1.969	3	1	1.000	-	0.969	KT-60HJ1-X	\$266.25	Xtra-bite	E
					1.220	2.900	2.000	3	2	0.500	0.500	1.000	KT-60HJ2	\$289.91	Shark Jaws	D
					1.220	2.728	1.740	3	2	0.402	0.402	0.936	KT-60HJ2-U	\$252.94	OEM Style	E
K1-12-20	6	0.472 (12mm)	10mm	0.787 (20mm)	1.250	3.000	1.969	3	2	0.500	0.500	0.969	KT-60HJ2-X	\$266.25	Xtra-bite	E

Call Us Today For All Of Your Machine Tool Needs!

SOFT JAWS- 1.5 mm x 60° Serrations

C

LATHE CHUCKS
LIVE CENTERS

WISE JAWS
WISE ACCESSORIES

STRAIGHT SHANK
COLLET HOLDERS

LATHE BUSHINGS
DRILL CHUCKS

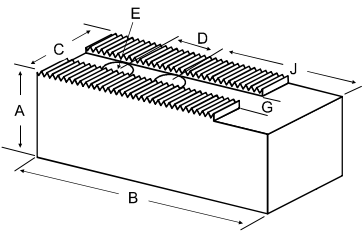
CARBIDE INSERTS
THREADING/GROOVING

CUTTING TOOLS
MACHINERY

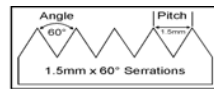
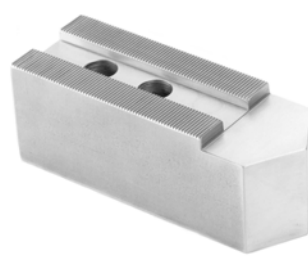
PRECISION TOOLS
DEBURRING

COOLANT/FLUIDS
TOOL STORAGE

FOR USE ON: Kitagawa, Samchully, Strong, MMK, SMW Autoblok, Howa & Hitachi-Seiki Chucks



- Supplies maximum concentricity on finish turning operations
- Can be bored or turned to fit workpiece
- Steel jaws can be hardened
- Available flat ended or pointed for smaller diameter parts
- Special orders available
- Available in Aluminum, Steel & Aircraft Aluminum (where noted)



Group

K1

QUANTITY DISCOUNTS!
Order **5 SETS OR MORE** of the same part number soft jaw and receive a **5% DISCOUNT!**

Group No.	Chuck Size	Critical Dimensions				ALUMINUM					STEEL			
		Groove Width G	Screw Size E	Hole Space D	Hole to Front J	Width Inch C	Length Inch B	Hght Inch A	No. of Holes	FLAT END Part Number	Price Set Of 3	FLAT END Part Number	Price Set Of 3	
K1-11-20	6	0.433 (11mm)	10mm	0.787 (20mm)	1.625	1.250	3.000	1.500	2	HO-6150AF	\$33.22	HO-6150F	\$35.65	
2.000								2	HO-6200AF	\$38.25	HO-6200F	\$40.94		
2.500								2	HO-6250AF	\$46.06	HO-6250F	\$49.28		
3.000								2	HO-6300AF	\$54.57	HO-6300F	\$58.39		
K1-11-25	6	0.433 (11mm)	8mm	0.985 (25mm)	1.625	1.000	3.000	1.500	2	SG-6150AF	\$33.15	SG-6150F	\$33.25	
2.500								2	SG-6250AF	\$41.30	SG-6250F	\$41.30		
3.000								2	SG-6300AF	\$41.75	SG-6300F	\$41.75		
1.250								3.000	1.500	2	SG-6152AF	\$37.29	SG-6152F	\$40.05
K1-12-20	6	0.472 (12mm)	10mm	0.787 (20mm)	1.625	1.250	3.000	1.000	2	KT-6100AF	\$31.45	KT-6100F	\$33.86	
1.500								2	KT-6150AF	\$33.22	KT-6150F	\$21.26		
1.500								2	KT-6150BF	\$45.82	-	-		
2.000								2	KT-6200AF	\$40.14	KT-6200F	\$25.10		
2.000								2	KT-6200BF	\$57.79	-	-		
2.500								2	KT-6250AF	\$41.30	KT-6250F	\$28.98		
3.000								2	KT-6300AF	\$50.38	KT-6300F	\$32.86		
3.000								2	KT-6300BF	\$63.99	-	-		
3.500								2	KT-6350AF	\$65.19	KT-6350F	\$69.78		
4.000								2	KT-6400AF	\$71.55	KT-6400F	\$76.56		
1.500								2	KT-6152AF	\$61.66	KT-6152F	\$66.25		
3.000								2	KT-6302AF	\$71.77	KT-6302F	\$76.56		
1.250								3.000	5.000	2	KT-6500AF*	\$145.25	KT-6500F*	\$157.58
2.125								1.250	3.500	1.500	2	KT-6151AF	\$39.12	KT-6151F
K1-14-20	6	0.551 (14mm)	10mm	0.790 (20mm)	1.625	1.250	3.000	1.500	2	NK-6150AF	\$33.22	NK-6150F	\$35.65	
2.500								2	NK-6250AF	\$46.06	NK-6250F	\$49.28		

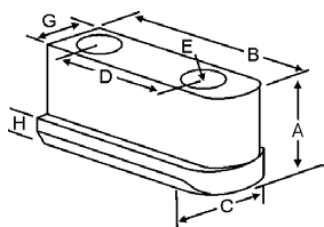
For "Pointed" Soft Jaws, please substitute "P" for "F" in the part number. Example: HO-6200AF will be HO-6200AP. Add \$3.25 For Pointed Jaws
Soft Jaw Material: ALUMINUM-6061-T6 Bar Stock, STEEL-1018 or 1050, "B" JAWS-7075-T6 Aircraft Aluminum
For complete list of applicable chucks, see pages 632-644. * denotes non-stock item. Please allow 1 week manufacturing time.

JAW NUTS & SCREWS



MADE IN THE USA

FREE SCREWS!
2 High Grade Socket Head Cap Screws Provided With Each Jaw Nut!



USST™

Chuck Make & Model	Chuck Size	Critical Dimensions					2 Screws Included With Each Jaw Nut					
		Heel Height H	Groove Width G	Screw Size Pitch & Length E	Hole Space D	Hght Inch A	Width Inch C	Length Inch B	Jaw Nut Part Number	Price Each	Screw Part Number	Price Each
-	6	0.295	0.432 (11mm)	M10-1.60x30mm	0.787 (20mm)	0.847	0.669	1.460	HO-62JN	\$26.50	M1016030	\$2.00
MMK: Z-6,ZA5-6-0, ZA5-6B,ZJA5-6	6	0.295	0.432 (11mm)	M8-1.25x30mm	0.984 (25mm)	0.790	0.690	1.570	SG-60JN	\$26.50	M0812530	\$2.00
Kitagawa: B-206,BT-206,BB-06,B-07 Strong: N206 Samchully: HS-06	6	0.295	0.472 (12mm)	M10-1.60x30mm	0.787 (20mm)	0.728	0.689	1.417	KT-60JN	\$26.50	M1016030	\$2.00
Kitagawa: B-06	6	0.295	0.472 (12mm)	M10-1.60x30mm	0.787 (20mm)	0.885	0.689	1.440	KT-61JN	\$26.50	M1016030	\$2.00

Call Us Or Visit Our Website For Our Complete Selection!

2010-11 Master Catalog