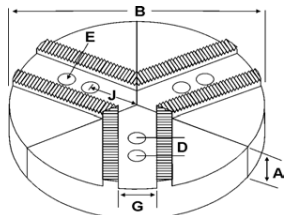
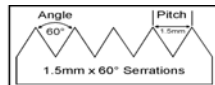


ROUND JAWS- 1.5 mm x 60° Serrations

FOR USE ON: **Kitagawa, Samchully, Strong, MMK, SMW Autoblok, Howa & Hitachi-Seiki Chucks**



- Round Jaws allow for complete gripping of workpiece
- Oversized jaws available
- Ideal for thin-walled or irregular shaped workpieces.
- Can be machined to fit workpiece
- Max. length of serrations: 5.75"
- All jaws have 2 holes
- Special "J" dimensions available
- Available in Aluminum, Cast Iron & Steel
- **Made in the USA**



Group

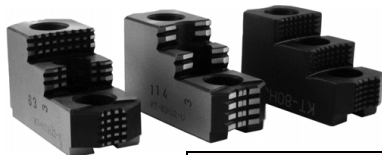


Group No.	Chuck Size	Critical Dimensions							ALUMINUM		CAST IRON		STEEL					
		Groove Width G	Screw Size E	Hole Space D	Hole to Front J	Pie Dia B	Height Inch A	Industry Ref #	Part Number	Price Set of 3	Part Number	Price Set of 3	Part Number	Price Set of 3				
K1-14-25	8	0.551 (14mm)	12mm	0.984 (25mm)	2.250	6	-	-	6-RKT-8200A	\$69.10	6-RKT-8200CI	\$89.60	-	-				
Kitagawa B-08, B-208, BB08, BB208							-	-	6-RKT-8300A*	\$94.14	-	-	-	-				
Samchully HS-08, HH208							2.250	8	2.00	KTT8P	RKT-8200A	\$81.00	RKT-8200CI	\$115.20	RKT-8200S	\$235.52		
									3.00	AKT8MHFG	RKT-8300A	\$126.81	-	-	RKT-8300S	\$323.83		
									4.00	KTT8P1	RKT-8400A	\$127.00	RKT-8400CI	\$217.59	RKT-8400S	\$382.71		
									6.00	-	RKT-8600A	\$249.55	-	-	-	-		
Strong N208					2.266	8	2.00	HAR8MSHP	RHA-8200A	\$103.98	-	-	-					
							4.00	HAR8MSHP1	RHA-8400A	\$145.57	-	-	-					
MMK ZA6-8, HA6-8 HOWA HO15M8, HO7MA8 SMW Autoblok BBM-210, BHM-210					2.250	10	2.00	KTT10-8P	10-RKT-8200A	\$120.78	10-RKT-8200CI*	\$172.80	10-RKT-8200S	\$338.55				
							3.00	-	10-RKT-8300A	\$160.28	-	-	-					
							4.00	KTT10-8P1	10-RKT-8400A	\$176.50	10-RKT-8400CI	\$307.19	-	-				
							6.00	-	10-RKT-8600A*	\$391.53	-	-	-					
							2.250	12	2.00	KTT12-8P	12-RKT-8200A	\$177.32	-	-	-			
									3.00	-	12-RKT-8300A	\$292.45	-	-	-			
2.250					15	2.50	-	15-RKT-8250A	\$392.31	-	-	-						
						4.00	-	15-RKT-8400A	\$448.37	-	-	-						
K1-14-30					8	0.551 (14mm)	10mm	1.181 (30mm)	2.250	8	-	-	RSG-8200A	\$103.98	RSG-8200CI	\$115.20	RSG-8200S	\$235.52
3.00											-	RSG-8300A	\$126.81	-	-	RSG-8300S	\$323.83	
4.00	SUG8P1STS	RSG-8400A	\$145.57	RSG-8400CI							\$217.59	-	-					
2.250	10	2.00	-	10-RSG-8200A					\$136.45	-	-	-						
		4.00	-	10-RSG-8400A					\$210.47	-	-	-						
		2.250	12	2.00					-	12-RSG-8200A	\$177.32	-	-	-				
K1-16-25	8	0.630 (16mm)	12mm	0.984 (25mm)	2.250	8	2.00	HOW27M88P	RHO-8200A	\$91.50	RHO-8200CI	\$115.20	RHO-8200S	\$235.52				
3.00							-	RHO-8300A	\$121.00	-	-	RHO-8300S	\$323.83					
4.00							HOW27M88P1	RHO-8400A	\$127.00	RHO-8400CI	\$217.59	-	-					
2.250					10	2.00	-	10-RHO-8200A	\$120.78	-	-	-						
						4.00	-	10-RHO-8400A	\$176.50	-	-	-						
						2.250	12	2.00	-	12-RHO-8200A	\$177.32	-	-	-				
2.250	12	4.00	-	12-RHO-8400A	\$351.92	-	-	-										
		2.500	8	2.00	-	RAB-8200A	\$103.98	RAB-8200CI	\$115.20	RAB-8200S	\$235.52							
				2.00	AUTOBHM8P	RAB-8200A4	\$103.98	-	-	-								
				3.00	-	RAB-8300A	\$126.81	-	-	RAB-8300S	\$268.18							
4.00	-			RAB-8400A	\$145.57	RAB-8400CI	\$217.59	-	-									
2.500	8	4.00	AUTOBHM8P1	RAB-8400A4	\$126.81	-	-	-										

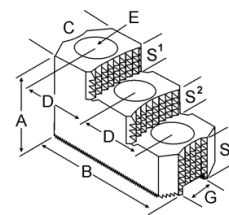
Round Jaw Material: ALUMINUM-6061-T6 Bar Stock, CAST IRON-Gray, STEEL-1018

For complete list of applicable chucks, see pages 632-644.* denotes non-stock item. Please allow 1 week manufacturing time.

HARD JAWS- 1 & 2 STEP



- Designed for first operation roughing, expect standard runout between 0.005-0.010
- Reversible-suitable for OD & ID workholding.
- **XTRA BITE** - very aggressive bite. Has conical teeth for extra gripping power and ground body to provide improved runout.
- **GRIP-RITE-OEM Style** hard jaws have ground tips and provide better runout.
- **SHARK JAWS** have conical teeth for extra gripping power and black oxide for long life. Ideal for castings and scaly material. Made in the USA.
- 1 & 2 step jaws available.



Group Number	Chuck Size	Critical Dimensions							Top Step Ht S1	Mid Step Ht S2	Bot Step Ht S3	Part Number	Price Per Set	Style	Code	
		Groove Width G	Screw Size E	Hole Space D	Width C	OAL B	Height A	No. of Holes								No. of Steps
K1-14-25	8	0.551 (14mm)	12mm	0.984 (25mm)	1.500	3.300	2.000	3	1	0.500	-	1.000	KT-80HJ1	\$343.00	Shark Jaws	D
1.382					3.402	1.669	3	1	0.591	-	1.078	KT-80HJ1-U	\$299.25	OEM Style	E	
1.500					3.500	1.969	3	1	1.030	-	0.938	KT-80HJ1-X	\$315.00	XTRA-BITE	E	
1.500					3.300	2.000	3	2	0.500	0.500	1.000	KT-80HJ2	\$343.00	Shark Jaws	D	
1.382					3.409	2.000	3	2	0.465	0.465	1.070	KT-80HJ2-U	\$299.25	OEM Style	E	
1.500					3.500	1.969	3	2	0.530	0.530	0.909	KT-80HJ2-X	\$315.00	XTRA-BITE	E	
K1-16-25	8	0.630 (16mm)	12mm	0.984 (25mm)	1.500	3.300	2.000	3	2	0.500	0.500	1.000	HO-80HJ2	\$358.39	Shark Jaws	D

Call Us Today For All Of Your Machine Tool Needs!

2010-11 Master Catalog

SOFT JAWS- 1.5 mm x 60° Serrations

C

LATHE CHUCKS
LIVE CENTERS

WISE JAWS
WISE ACCESSORIES

STRAIGHT SHANK
COLLET HOLDERS

LATHE BUSHINGS
DRILL CHUCKS

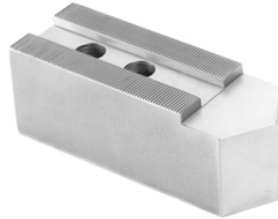
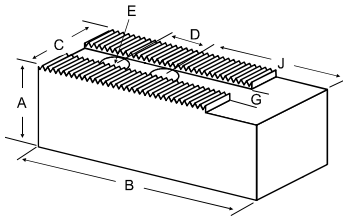
CARBIDE INSERTS
THREADING/GROOVING

CUTTING TOOLS
MACHINERY

PRECISION TOOLS
DEBURRING

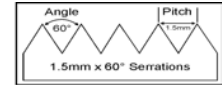
COOLANT/FLUIDS
TOOL STORAGE

FOR USE ON: Kitagawa, Samchully, Strong, MMK, SMW Autoblok, Howa & Hitachi-Seiki Chucks



JAW NUTS (please see table at bottom of page)

FREE SCREWS!
2 High Grade Socket Head Cap Screws Provided With Each Jaw Nut!



Group
(K1)

QUANTITY DISCOUNTS!
Order **5 SETS OR MORE** of the same part number soft jaw and receive a **5% DISCOUNT!**

Group No.	Chuck Size	Critical Dimensions			Hole to Front J	Width Inch C	Length Inch B	Hght Inch A	No. of Holes	ALUMINUM		STEEL				
		Groove Width G	Screw Size E	Hole Space D						FLAT END Part Number	Price Set Of 3	FLAT END Part Number	Price Set Of 3			
K1-14-25	8	0.551 (14mm)	12mm	0.984 (25mm)	2.000	1.500	3.750	1.500	2	KT-8150AF	\$38.25	KT-8150F	\$39.47			
Kitagawa B-08, B-208, BB08, BB208								2.000	2	KT-8200AF	\$38.65	KT-8200F	\$32.86			
Samchully HS-08								2.000	2	KT-8200BF	\$67.21	-	-			
Strong N208								3.000	2	KT-8300AF	\$46.50	KT-8300F	\$44.30			
MMK ZA6-8, HA6-8, HH-8, HHJ-8								3.000	2	KT-8300BF	\$81.67	-	-			
HOWA H3KT8, HO15M8, HO7MA8, SMW Autoblok, BHM-210, BHM-210								4.000	2	KT-8400AF	\$57.14	KT-8400F	\$55.89			
					5.000	2	KT-8500AF	\$110.43	KT-8500F	\$117.76						
					6.000	2	KT-8600AF	\$178.65	KT-8600F	\$191.36						
					2.250	1.500	4.000	HURON EQUIVALENT	1.500	4.000	2.000	2	KT-8201AF	\$38.75	KT-8201F	\$34.22
											2.000	2	KT-8201BF	\$59.27	-	-
											3.000	2	KT-8301AF	\$46.75	KT-8301F	\$45.25
											4.000	2	KT-8401AF	\$57.75	KT-8401F	\$56.75
											6.000	2	KT-8601AF	\$193.79	KT-8601F	\$210.24
											2.000	-	-	-	-	KT-8
					3.000	-	-	-	-	KT-8MH	\$71.04					
	4.000	-	-	-	-	KT-8EH	\$80.99									
	2.000	-	-	-	-	KT-8PL	\$64.91									
	3.000	-	-	-	-	KT-8MHPL	\$79.61									
	4.000	-	-	-	-	KT-8EHPL	\$94.33									
K1-14-30	8	0.551 (14mm)	10mm	1.181 (30mm)	1.970	1.500	3.750	2.000	2	SG-8200AF	\$46.87	SG-8200F	\$50.04			
Suga 8"								3.000	2	SG-8300AF	\$59.83	SG-8300F	\$63.69			
								4.000	2	SG-8400AF	\$69.38	SG-8400F	\$73.63			
K1-16-25	8	0.630 (16mm)	12mm	0.984 (25mm)	2.000	1.500	3.750	2.000	2	HO-8200AF	\$46.87	HO-8200F	\$32.86			
HOWA HO15M10, HO22M8, HO24M8, HO27M8, HO34M8								3.000	2	HO-8300AF	\$59.83	HO-8300F	\$59.75			
								4.000	2	HO-8400AF	\$61.75	HO-8400F	\$61.75			
					6.000	2	HO-8600AF	\$192.22	HO-8600F	\$206.08						
					2.250	1.500	4.000	2.000	2	HO-8201AF	\$44.75	HO-8201F	\$44.75			
	2.000	1.500	4.500	2.000	2	HO-8200APL	\$53.51	HO-8200PL	\$58.05							
K1-17-23	8	0.669 (17mm)	12mm	0.905 (23mm)	2.000	1.500	3.750	2.000	2	AB-8200AF	\$46.87	AB-8200F	\$50.04			
SMW 200, SMW 210								3.000	2	AB-8300AF	\$59.83	AB-8300F	\$63.69			
								4.000	2	AB-8400AF	\$69.38	AB-8400F	\$73.63			
K1-17-25	8	0.669 (17mm)	12mm	0.984 (25mm)	2.000	1.500	3.750	2.000	2	AB-8205AF	\$46.87	AB-8205F	\$50.04			

For "Pointed" Soft Jaws, please substitute "P" for "F" in the part number. Example: KT-8150AF will be KT-8150AP. Add \$3.25 For Pointed Jaws
"Huron Equivalent" jaws are pointed. Soft Jaw Material: ALUMINUM-6061-T6 Bar Stock, STEEL-1018 or 1050, "B" JAWS-7075-T6 Aircraft Aluminum
For complete list of applicable chucks, see pages 632-644. * denotes non-stock item. Please allow 1 week manufacturing time.

JAW NUTS AND SCREWS



Chuck Make & Model	Chuck Size	Critical Dimensions							2 Screws Included With Each Jaw Nut			
		Heel Height H	Groove Width G	Screw Size Pitch & Length E	Hole Space D	Hght Inch A	Width Inch C	Length Inch B	Jaw Nut Part Number	Price Each	Screw Part Number	Price Each
-	8	0.335	0.549 (14mm)	M12-1.75x35mm	0.984 (25mm)	0.895	0.807	1.840	KT-82JN	\$27.98	M1217535	\$2.00
Kitagawa: BB-08, B-208, BT-208 Strong: N208 Samchully: HS-08	8	0.335	0.549 (14mm)	M12-1.75x30mm	0.984 (25mm)	0.807	0.807	1.880	KT-81JN	\$27.98	M1217530	\$2.00
Kitagawa: NT-08, B-08, BT-08, HOB-8	8	0.374	0.549 (14mm)	M12-1.75x35mm	0.984 (25mm)	1.000	0.807	1.880	KT-80JN	\$22.44	M1217535	\$2.00
Howa: HO15M10, HO22M10, HO24M10	8	0.335	0.629 (16mm)	M12-1.75x40mm	0.984 (25mm)	1.040	0.807	1.830	HO-80JN	\$27.98	M1217540	\$2.00

Call Us Or Visit Our Website For Our Complete Selection!

2010-11 Master Catalog