

CHUCK JAWS  
LATHE WORKHOLDING

MACHINE VISES  
MAGNETIC CHUCKS

RETENTION KNOBS  
ER, DA, TG COLLETS

TOOLHOLDERS  
TAP HOLDERS

INDEXABLE DRILLS  
TURNING & BORING

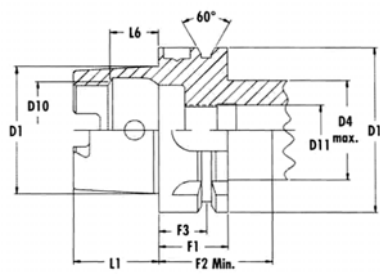
ENDMILLS, DRILLS  
TAPS & REAMERS

ABRASIVES  
MEASURING TOOLS

MRO & SAFETY  
FLAT STOCK/DRILL ROD

# HSK TAPER TOOLHOLDERS

## HSK TAPER ENDMILL HOLDERS



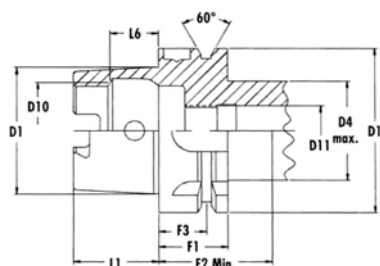
### HSK 100A Endmill Holders-3/16" to 1-1/2"

Dia.	C Proj.	B Out-side Dia.	D Max Socket Depth	Brand	Part Number	Price Each	Code
1/4"	2.38	0.78	1.3	Command	H100A-25EM238-M	\$201.88	C
5/16"	2.5	0.88	1.4	Command	H100A-31EM250-M	\$201.88	C
3/8"	2.63	1	1.5	Command	H100A-37EM263-M	\$201.88	C
1/2"	3.5	1.25	2.1	Command	H100A-50EM350-M	\$201.88	C
5/8"	3.5	1.5	2.1	Command	H100A-62EM350-M	\$201.88	C
3/4"	3.75	1.75	2.3	Command	H100A-75EM375-M	\$201.88	C
7/8"	3.75	1.88	2.3	Command	H100A-87EM375-M	\$201.88	C
1"	4.38	2	2.9	Command	H100A-10EM438-M	\$206.29	C
1-1/4"	4.75	2.5	3.2	Command	H100A-12EM475-M	\$230.02	C
1-1/2"	4.75	2.5	3.1	Command	H100A-15EM475-M	\$261.94	C
2"	5.75	3.75	4	Command	H100A-200EM575-M	\$278.25	C

### HSK 63A Endmill Holders-1/4" to 1-1/4"

Dia.	C Proj.	B Out-side Dia.	D Max Socket Depth	Brand	Part Number	Price Each	Code
1/4"	2.13	0.78	1.3	Command	H63A-25EM213-M	\$153.65	C
5/16"	2.25	0.88	1.4	Command	H63A-31EM225-M	\$153.65	C
3/8"	2.88	1	1.8	Command	H63A-37EM288-M	\$156.59	C
1/2"	3.13	1.25	2	Command	H63A-50EM313-M	\$156.59	C
5/8"	3.38	1.5	2.2	Command	H63A-62EM338-M	\$161.07	C
3/4"	3.5	1.75	2.3	Command	H63A-75EM350-M	\$161.07	C
1"	4	2	2.8	Command	H63A-10EM400-M	\$167.72	C
1 1/4"	4.5	2.5	3.2	Command	H63A-12EM450-M	\$167.72	C

## HSK TAPER COLLET CHUCKS



Taper	Collet Series	C Proj.	B Nut Dia.	D Socket Depth	Nut Tight. Torque (ft.lbs.)	Brand	Part Number	Price Each	Collet Nut	Wrench	Code
HSK 63A	ER16	4.06	1.11	2.22	52	Parlec	H63A-16ER406-P	\$190.80	CN-ER16PN-P	WR-ER16-P	B
	ER20	2.76	34mm	55mm	74	Domestic	H63A-20ER276-A	\$255.00	CN-ER20-A	WR-ER20-A	B
		4.06	1.34	2	74	Parlec	H63A-20ER406-P	\$197.10	CN-ER20-P	WR-ER20-P	B
	ER25	3.15	42mm	60mm	95	Domestic	H63A-25ER315-A	\$263.50	CN-ER25-A	WR-ER25-A	B
		4.06	1.67	2.5	95	Parlec	H63A-25ER406-P	\$225.00	CN-ER25-P	WR-ER25-P	B
	ER32	3.27	1.97	1.8	125	Parlec	H63A-32ER327-P	\$208.80	CN-ER32-P	WR-ER32-P	B
4.84		1.97	3.3	125	Parlec	H63A-32ER484-P	\$229.50	CN-ER32-P	WR-ER32-P	B	
ER40	3.27	2.36	1.6	162	Parlec	H63A-40ER327-P	\$215.10	CN-ER40-P	WR-ER40-P	B	
	4.84	2.36	3	162	Parlec	H63A-40ER484-P	\$270.00	CN-ER40-P	WR-ER40-P	B	
HSK 100A	ER16	4.06	1.11	2.22	52	Parlec	H100A-16ER406-P	\$232.20	CN-ER16PN-P	WR-ER16-P	B
		6.42	1.11	3.12	52	Parlec	H100A-16ER642-P	\$250.20	CN-ER16PN-P	WR-ER16-P	B
	ER20	4.06	1.34	2.2	74	Parlec	H100A-20ER406-P	\$232.20	CN-ER20-P	WR-ER20-P	B
		6.42	1.34	3.5	74	Parlec	H100A-20ER642-P	\$258.30	CN-ER20-P	WR-ER20-P	B
	ER25	4.06	1.67	2.3	95	Parlec	H100A-25ER406-P	\$250.20	CN-ER25-P	WR-ER25-P	B
	ER32	4.06	1.97	2.3	125	Parlec	H100A-32ER406-P	\$262.80	CN-ER32-P	WR-ER32-P	B
	ER40	4.06	2.36	1.8	162	Parlec	H100A-40ER406-P	\$262.80	CN-ER40-P	WR-ER40-P	B
		4.06	2.36	1.8	162	Parlec	H100A-40ER406-P	\$262.80	CN-ER40-P	WR-ER40-P	B

Call Us Today For All Of Your Machine Tool Needs!