



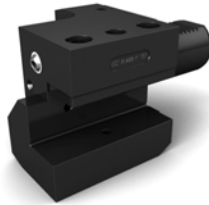
What is VDI?

The main principle behind the **VDI System** is a quick-change, cam-operated clamping system for each toolholder within the tool disc. Tool changes can therefore be performed within seconds, rather than within minutes as with the traditional block system. The toolholders can also be preset away from the lathe on a presetter. This quick-change design principle has been employed in Western Europe for many years, but is relatively new to North America. We offer the full range of VDI quick-change precision toolholders for CNC lathes. We offer the largest selection from several suppliers with extensive stock at competitive prices. Shanks from 20 to 80mm are offered.

All VDI holders are manufactured to the strictest tolerances and conform to **DIN 69880** and **VDI3425**.

Other Features Include:

- Heat-treated steel with approx. 700N/mm² tensile strength
 - Hardened and ground cylindrical shaft
 - Ground tool seat faces and shoulder black oxidized to retard oxidation
 - Internal coolant supplies with adjustable ball-type nozzles
- square tools can be preset with spring loaded plates

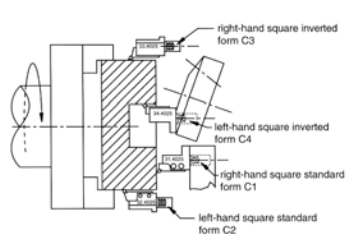
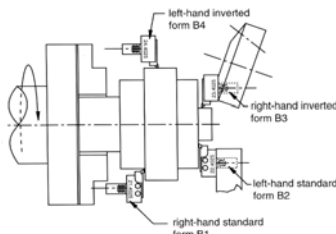
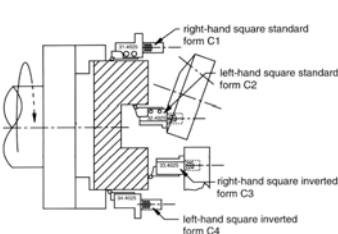
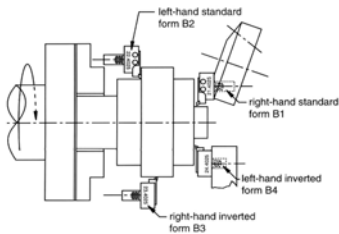


left-hand (clockwise) spindle rotation

left-hand (clockwise) spindle rotation

right-hand (counterclockwise) spindle rotation

right-hand (counterclockwise) spindle rotation

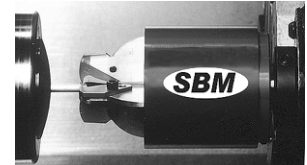


VDI SHANK BAR PULLERS Coolant or Air Actuated

An Inexpensive And Simple Way to Automate Your CNC Lathe- Automatically Pulls And Precisely Positions Bar Stock Through The Chuck, Eliminating Manual Loading And Unloading Of Each And Every Part!



No Down Time-machine continues to run, freeing operator to work other jobs.
Self Adjusting & Self Releasing-After initial setting, no adjustment required for different sizes, and needs only 1/4" of bar length to pull bar!
4 Fingers-Holds round and square parts. Can also hold hex and flat parts with just 2 fingers.
Pull Threaded or Delicate Material-Simply use the optional soft steel, aluminum, brass or delrin fingers.
Bar Can Be Pulled and Positioned Multiple Times for machining various sections of the part before cutoff.
Great for Sub-Spindle Lathes- use as a "pick and place" device for finished parts.
Quick Installation- comes complete with fingers and bar support collar...be "up and running" within 1 hour!



Increase your **PROFITS** and **PRODUCTION!**

Large Bar Puller

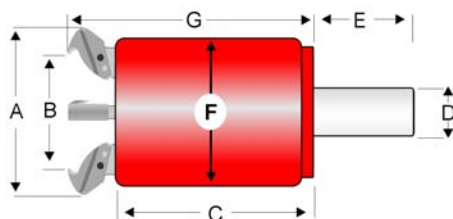
Description	Part Number	Price
VDI 30	BU-GA1000VDI-30	\$499.00
VDI 40	BU-GA1000VDI-40	\$499.00

SBM Bar Pullers are shipped complete with 1 set of hard steel fingers and 1 bar support collar.

Clearance Dimensions

Size	A	B	C	D	E	F
Large Puller	3 5/8"	2 1/2"	2 7/8"	Shank	1 3/4"	2 3/4"
	4"	3 1/8"	2 7/8"	Shank	1 3/4"	2 3/4"

CLEARANCE DIMENSIONS



RISK FREE GUARANTEE!
 Use the SBM Bar Puller for 30 Days, and if you are not Completely Satisfied, you can return it for your money back...No Questions Asked!

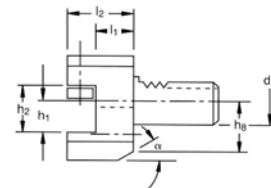
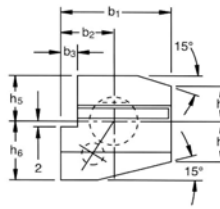
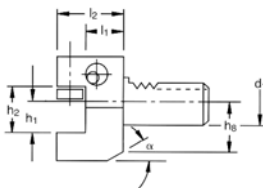
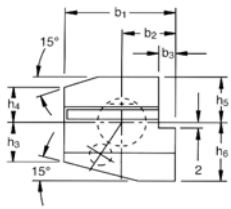
Call Us Or Visit Our Website For Our Complete Selection!

RADIAL OVERHEAD TURNING TOOLHOLDERS SHORT STANDARD- FORMS B1 & B2

Form B1 (Right Hand)



Form B2 (Left Hand)



FORMS B1 & B2

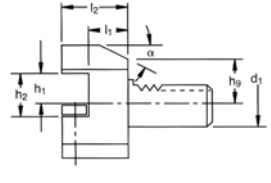
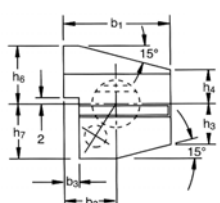
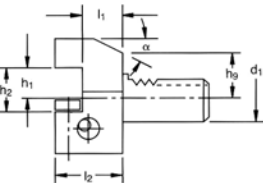
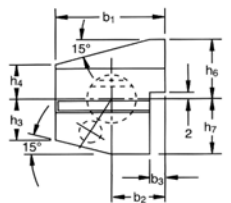
RIGHT HAND (FORM B1)	LEFT HAND (FORM B2)	Manufacturer	Type	Price Each	d1	b1	b2	b3	h1 in	h1 mm	h2	h3	h4	h5	h6	h8	L1	L2	∞
V-B13020-0750RG	V-B23020-0750RG	USA	Inch	\$147.05	30	70	35.0	10.0	3/4	-	29	26.0	22.0	28.0	38.0	30.0	22	40	25
V-B13020-0750RK	-	USST	Inch	\$104.41	30	70	35.0	10.0	3/4	-	29	26.0	22.0	28.0	38.0	30.0	22	40	25
V-B13020-20MRG	V-B23020-20MRG	USA	Metric	\$164.05	30	70	35.0	10.0	-	20	29	26.0	22.0	28.0	38.0	30.0	22	40	25
V-B13025-1000RG	V-B23025-1000RG	USA	Inch	\$147.05	30	70	35.0	10.0	1	-	34	28.0	26.0	32.0	48.0	43.0	22	47	25
V-B13025-25MRG	V-B23025-25MRG	USA	Metric	\$147.05	30	70	35.0	10.0	-	25	34	28.0	26.0	32.0	48.0	43.0	22	47	25
V-B14025-1000RG	V-B24025-1000RG	USA	Inch	\$167.45	40	85	42.5	12.5	1	-	34	35.0	30.0	32.5	48.0	42.0	22	47	30
V-B14025-1000RK	-	USST	Inch	\$118.89	40	85	42.5	12.5	1	-	34	35.0	30.0	32.5	48.0	42.0	22	47	30
V-B14025-25MRG	V-B24025-25MRG	USA	Metric	\$167.45	40	85	42.5	12.5	-	25	34	35.0	30.0	32.5	48.0	42.0	22	47	30
V-B15025-1000RG	V-B25025-1000RG	USA	Inch	\$211.65	50	100	50.0	16.0	1	-	34	42.0	35.0	35.0	60.0	-	30	55	-
V-B15025-25MRG	V-B25025-25MRG	USA	Metric	\$211.65	50	100	50.0	16.0	-	25	34	42.0	35.0	35.0	60.0	-	30	55	-
V-B15032-1250RG	V-B25032-1250RG	USA	Inch	\$262.65	50	100	50.0	16.0	1 1/4	-	41	42.0	35.0	35.0	60.0	-	30	61	-
V-B15032-32MRG	V-B25032-32MRG	USA	Metric	\$262.65	50	100	50.0	16.0	-	32	41	42.0	35.0	35.0	60.0	-	30	61	-

RADIAL OVERHEAD TURNING TOOLHOLDERS SHORT INVERTED- FORMS B3 & B4

Form B3 (Right Hand)



Form B4 (Left Hand)



FORMS B3 & B4

RIGHT HAND (FORM B3)	LEFT HAND (FORM B4)	Manufacturer	Type	Price Each	d1	b1	b2	b3	h1 in	h1 mm	h2	h3	h4	h6	h7	h8	L1	L2	∞
V-B33020-0750RG	V-B43020-0750RG	USA	Inch	\$175.10	30	70	35.0	10.0	3/4	-	29	26.0	22.0	38.0	35.0	28.0	22	40	25
V-B33020-0750RK	-	USST	Inch	\$124.32	30	70	35.0	10.0	3/4	-	29	26.0	22.0	38.0	35.0	28.0	22	40	25
V-B33020-20MRG	V-B43020-20MRG	USA	Metric	\$183.60	30	70	35.0	10.0	-	20	29	26.0	22.0	38.0	35.0	28.0	22	40	25
V-B33025-1000RG	V-B43025-1000RG	USA	Inch	\$175.10	30	70	35.0	10.0	1	-	34	26.0	28.0	48.0	31.0	38.0	22	47	25
V-B33025-25MRG	V-B43025-25MRG	USA	Metric	\$175.10	30	70	35.0	10.0	-	25	34	26.0	28.0	48.0	31.0	38.0	22	47	25
V-B34025-1000RG	V-B44025-1000RG	USA	Inch	\$201.45	40	85	42.5	12.5	1	-	34	35.0	30.0	48.0	42.5	32.5	22	47	30
V-B34025-1000RK	-	USST	Inch	\$143.03	40	85	42.5	12.5	1	-	34	35.0	30.0	48.0	42.5	32.5	22	47	30
V-B34025-25MRG	V-B44025-25MRG	USA	Metric	\$201.45	40	85	42.5	12.5	-	25	34	35.0	30.0	48.0	42.5	32.5	22	47	30
V-B35025-1000RG	V-B45025-1000RG	USA	Inch	\$301.75	50	100	50.0	16.0	1	-	34	42.0	35.0	60.0	50.0	-	30	55	-
V-B35025-25MRG	V-B45025-25MRG	USA	Metric	\$301.75	50	100	50.0	16.0	-	25	34	42.0	35.0	60.0	50.0	-	30	55	-
V-B35032-1250RG	V-B45032-1250RG	USA	Inch	\$301.75	50	100	50.0	16.0	1-1/4	-	41	42.0	35.0	60.0	50.0	-	30	55	-
V-B35032-32MRG	V-B45032-32MRG	USA	Metric	\$301.75	50	100	50.0	16.0	-	32	41	42.0	35.0	60.0	50.0	-	30	55	-

Call Us Today For All Of Your Machine Tool Needs!

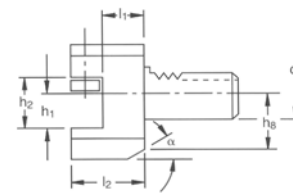
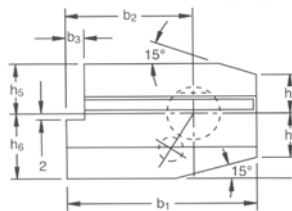
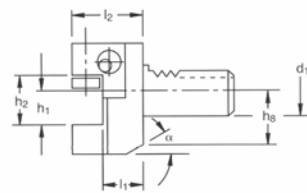
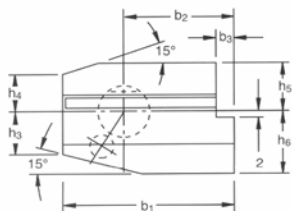
RADIAL OVERHEAD TURNING TOOLHOLDERS LONG-FORMS B5 & B6



Form B5 (Right Hand)



Form B6 (Left Hand)



FORMS B5 & B6

RIGHT HAND Part Number (FORM B5)	LEFT HAND Left Hand (FORM B6)	Manufacturer	Type	Price Each	d1	b1	b2	b3	h1 in	h1 mm	h2	h3	h4	h5	h6	h8	L1	L2	∞
V-B53020-0750RG	V-B63020-0750RG	USA	Inch	\$238.00	30	100	65.0	10.0	3/4	-	29	26.0	22.0	28.0	38.0	30.0	22	40	25
V-B53020-20MRG	V-B63020-20MRG	USA	Metric	\$247.35	30	100	65.0	10.0	-	20	29	26.0	22.0	28.0	38.0	30.0	22	40	25
V-B53025-1000RG	V-B63025-1000RG	USA	Inch	\$238.00	30	100	65.0	10.0	1	-	35	33.0	22.0	28.0	45.0	40.0	22	47	25
V-B53025-25MRG	V-B63025-25MRG	USA	Metric	\$238.00	30	100	65.0	10.0	-	25	35	33.0	22.0	28.0	45.0	40.0	22	47	25
V-B54025-1000RG	V-B64025-1000RG	USA	Inch	\$257.55	40	118	75.5	12.5	1	-	34	35.0	30.0	32.5	48.0	42.0	22	47	30
V-B54025-25MRG	V-B64025-25MRG	USA	Metric	\$257.55	40	118	75.5	12.5	-	25	34	35.0	30.0	32.5	48.0	42.0	22	47	30
V-B55025-1000RG	V-B65025-1000RG	USA	Inch	\$386.75	50	130	80.0	16.0	1	-	34	42.0	35.0	35.0	60.0	-	30	55	-
V-B55025-25MRG	V-B65025-25MRG	USA	Metric	\$386.75	50	130	80.0	16.0	-	25	34	42.0	35.0	35.0	60.0	-	30	55	-
V-B55032-1250RG	V-B65032-1250RG	USA	Inch	\$386.75	50	130	80.0	16.0	1 1/4	-	41	42.0	35.0	35.0	60.0	-	30	61	-
V-B55032-32MRG	V-B65032-32MRG	USA	Metric	\$386.75	50	130	80.0	16.0	-	32	41	42.0	35.0	35.0	60.0	-	30	61	-

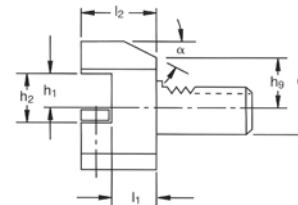
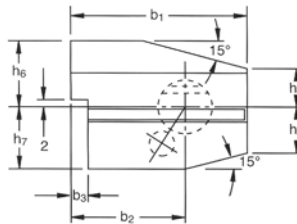
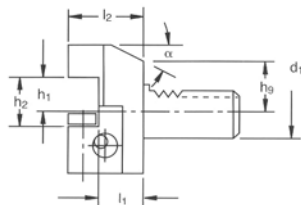
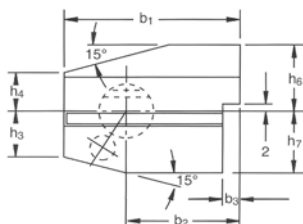
RADIAL OVERHEAD TURNING TOOLHOLDERS LONG INVERTED- FORMS B7 & B8



Form B7 (Right Hand)



Form B8 (Left Hand)



FORMS B7 & B8

RIGHT HAND Part Number (FORM B7)	LEFT HAND Part Number (FORM B8)	Manufacturer	Type	Price Each	d1	b1	b2	b3	h1 in	h1 mm	h2	h3	h4	h6	h7	h9	L1	L2	a
V-B73020-0750RG	V-B83020-0750RG	USA	Inch	\$243.10	30	100	65.0	10.0	3/4	-	29.0	26.0	22.0	38.0	35.0	28.0	22	40	25
V-B73020-20MRG	V-B83020-20MRG	USA	Metric	\$249.90	30	100	65.0	10.0	-	20	29.0	26.0	22.0	38.0	35.0	28.0	22	40	25
V-B73025-1000RG	V-B83025-1000RG	USA	Inch	\$243.10	30	100	65.0	10.0	1	-	34.0	26.0	28.0	44.0	35.0	40.0	22	47	25
V-B73025-25MRG	V-B83025-25MRG	USA	Metric	\$243.10	30	100	65.0	10.0	-	25	34.0	26.0	28.0	44.0	35.0	40.0	22	47	25
V-B74025-1000RG	V-B84025-1000RG	USA	Inch	\$266.90	40	118	75.5	12.5	1	-	34.0	35.0	30.0	48.0	42.5	32.5	30	44	30
V-B74025-25MRG	V-B84025-25MRG	USA	Metric	\$266.90	40	118	75.5	12.5	-	25	34.0	35.0	30.0	48.0	42.5	32.5	30	44	30
V-B75025-1000RG	V-B85025-1000RG	USA	Inch	\$390.15	50	130	80.0	16.0	1	-	34.0	42.0	35.0	60.0	50.0	-	30	55	-
V-B75025-25MRG	V-B85025-25MRG	USA	Metric	\$390.15	50	130	80.0	16.0	-	25	34.0	42.0	35.0	60.0	50.0	-	30	55	-
V-B75032-1250RG	V-B85032-1250RG	USA	Inch	\$390.15	50	130	80.0	16.0	1 1/4	-	41.0	42.0	35.0	60.0	50.0	-	22	55	-
V-B75032-32MRG	V-B85032-32MRG	USA	Metric	\$390.15	50	130	80.0	16.0	-	32	41.0	42.0	35.0	60.0	50.0	-	22	55	-

Call Us Or Visit Our Website For Our Complete Selection!

LATHES CHUCKS
LIVE CENTERS

VICE JAWS
VICE ACCESSORIES

STRAIGHT SHANK
COLLET HOLDERS

LATHES BUSHINGS
DRILL CHUCKS

CARBIDE INSERTS
THREADING/GROOVING

CUTTING TOOLS
MACHINERY

PRECISION TOOLS
DEBURRING

COOLANT/FLUIDS
TOOL STORAGE

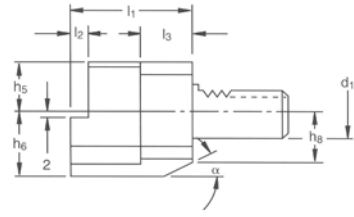
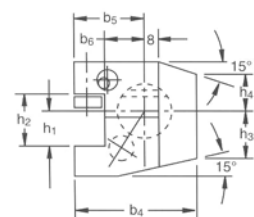
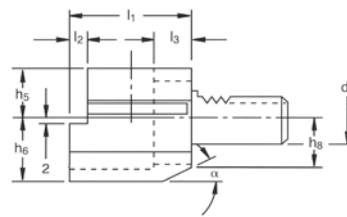
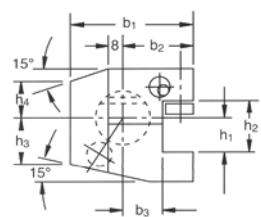
VDI TOOLING

SQUARE FACING/TURNING AXIAL TOOLHOLDERS INVERTED- FORMS C1 & C2

Form C1 (Right Hand)



Form C2 (Left Hand)



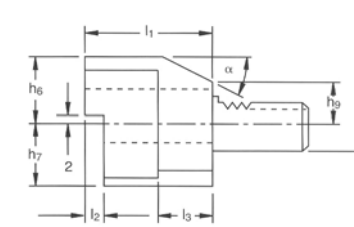
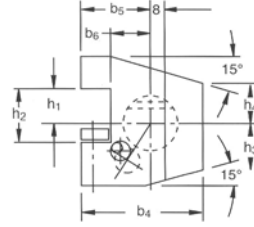
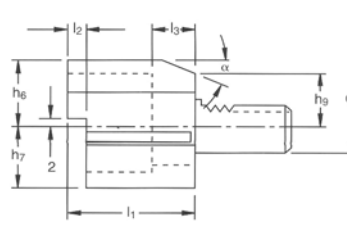
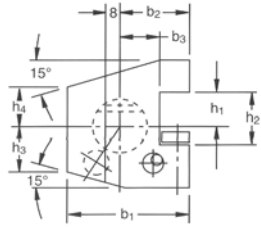
FORMS C1 & C2		Manufacturer	Type	Price Each	d1	b1	b2	b3	h1 in	h1 mm	h2	h3	h4	h5	h6	h8	L1	L2	L3	a
V-C13020-0750RG	V-C23020-0750RG	USA	Inch	\$207.40	30	70	35.0	17.0	3/4	-	29	26.0	22.0	28.0	38.0	30.0	70	10	30	25
V-C13020-0750RK	-	USST	Inch	\$147.25	30	70	35.0	17.0	3/4	-	29	26.0	22.0	28.0	38.0	30.0	70	10	30	25
V-C13020-20MRG	V-C23020-20MRG	USA	Metric	\$207.40	30	70	35.0	17.0	-	20	29	26.0	22.0	28.0	38.0	30.0	70	10	30	25
V-C13025-1000RG	-	USA	Inch	\$207.40	30	77	42.0	17.0	1	-	34	32.0	22.0	25.0	48.0	40.0	70	10	30	25
V-C13025-25MRG	-	USA	Metric	\$207.40	30	77	42.0	17.0	-	25	34	32.0	22.0	25.0	48.0	40.0	70	10	30	25
V-C14025-1000RG	V-C24025-1000RG	USA	Inch	\$232.90	40	85	42.5	20.5	1	-	34	35.0	30.0	32.5	48.0	42.0	85	12.5	30	30
V-C14025-1000RK	-	USST	Inch	\$165.36	40	85	42.5	20.5	1	-	34	35.0	30.0	32.5	48.0	42.0	85	12.5	30	30
V-C14025-25MRG	V-C24025-25MRG	USA	Metric	\$232.90	40	85	42.5	20.5	-	25	34	35.0	30.0	32.5	48.0	42.0	85	12.5	30	30
V-C15025-1000RG	-	USA	Inch	\$339.15	50	100	50.0	26.0	1	-	34	42.0	35.0	35.0	60.0	-	100	16	40	-
V-C15025-25MRG	-	USA	Metric	\$339.15	50	100	50.0	26.0	-	25	34	42.0	35.0	35.0	60.0	-	100	16	40	-
V-C15032-1250RG	V-C25032-1250RG	USA	Inch	\$339.15	50	100	50.0	25.5	1-1/4	-	41	42.0	35.0	35.0	60.0	-	100	16	40	-
V-C15032-32MRG	V-C25032-32MRG	USA	Metric	\$339.15	50	100	50.0	25.5	-	32	41	42.0	35.0	35.0	60.0	-	100	16	40	-

SQUARE FACING/TURNING AXIAL TOOLHOLDERS INVERTED- FORMS C3 & C4

Form C3 (Right Hand)



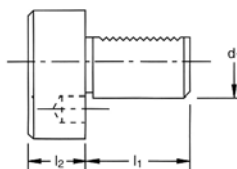
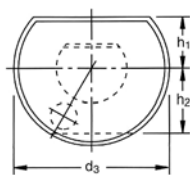
Form C4 (Left Hand)



FORMS C3 & C4		Manufacturer	Type	Price Each	d1	b1	b2	b3	h1 in	h1 mm	h2	h3	h4	h6	h7	h9	L1	L2	L3	a
V-C33020-0750RG	V-C43020-0750RG	USA	Inch	\$218.45	30	70	35.0	17.0	3/4	-	29	26.0	22.0	38.0	35.0	28.0	70	10	30	25
V-C33020-0750RK	-	USST	Inch	\$155.10	30	70	35.0	17.0	3/4	-	29	26.0	22.0	38.0	35.0	28.0	70	10	30	25
V-C33020-20MRG	V-C43020-20MRG	USA	Metric	\$218.45	30	70	35.0	17.0	-	20	29	26.0	22.0	38.0	35.0	28.0	70	10	30	25
V-C34025-1000RG	V-C44025-1000RG	USA	Inch	\$244.80	40	85	42.5	20.5	1	-	34	35.0	30.0	48.0	42.5	42.0	85	12.5	30	30
V-C34025-1000RK	-	USST	Inch	\$173.81	40	85	42.5	20.5	1	-	34	35.0	30.0	48.0	42.5	42.0	85	12.5	30	30
V-C34025-25MRG	V-C44025-25MRG	USA	Metric	\$244.80	40	85	42.5	20.5	-	25	34	35.0	30.0	48.0	42.5	42.0	85	12.5	30	30
V-C35032-1250RG	V-C45032-1250RG	USA	Inch	\$352.75	50	100	50.0	25.5	1-1/4	-	41	42.0	35.0	60.0	50.0	-	100	16	40	-
V-C35032-32MRG	V-C45032-32MRG	USA	Metric	\$352.75	50	100	50.0	25.5	-	32	41	42.0	35.0	60.0	50.0	-	100	16	40	-

Call Us Today For All Of Your Machine Tool Needs!

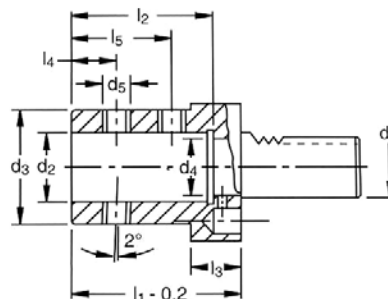
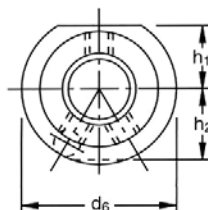
STEEL PLUG FORM Z2



FORM Z2 STEEL PLUGS

Part Number	Price Each	d1	d2	h1	h2	L1	L2
V-Z23068SG	\$48.57	30	68	28	30	55	16
V-Z23068PG	\$48.57	30	68	28	30	55	16
V-Z24083SG	\$52.14	40	83	32.5	-	63	20
V-Z24083PG	\$52.14	40	83	32.5	-	63	20
V-Z25098SG	\$56.43	50	98	35	-	78	20
V-Z25098PG	\$56.43	50	98	35	-	78	20

BORING BAR INTERNAL COOLANT FORM E1



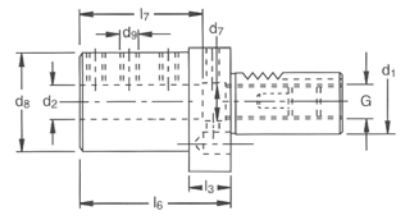
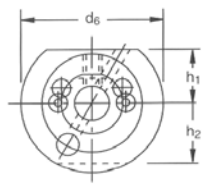
Form E1

Part Number	Manufacturer	Type	Price Each	D1	D2 in.	D2 mm	D3	D4	D5	D6	H1	H2	L1	L2	L3	L4	L5
V-E13008-031G	USA	Inch	\$147.05	30	5/16	-	46.0	6	1/4-20	68	28.0	30.0	67.0	54.0	22.0	15	34
V-E13012-050G	USA	Inch	\$147.05	30	1/2	-	46.0	10	1/4-20	68	28.0	30.0	67.0	54.0	22.0	15	34
V-E13012-12MG	USA	Metric	\$147.05	30	-	12.0	46.0	10	1/4-20	68	28.0	30.0	67.0	54.0	22.0	15	34
V-E13016-062G	USA	Inch	\$147.05	30	5/8	-	46.0	12	3/8-16	68	28.0	30.0	67.0	54.0	22.0	15	35
V-E13016-16MG	USA	Metric	\$147.05	30	-	16.0	46.0	12	3/8-16	68	28.0	30.0	67.0	54.0	22.0	15	35
V-E13020-075G	USA	Inch	\$147.05	30	3/4	-	50.0	12	3/8-16	68	28.0	30.0	67.0	54.0	22.0	15	35
V-E13020-20MG	USA	Metric	\$147.05	30	-	20.0	50.0	12	3/8-16	68	28.0	30.0	67.0	54.0	22.0	15	35
V-E13025-100G	USA	Inch	\$147.05	30	1	-	55.0	17	3/8-16	68	28.0	30.0	71.0	59.0	22.0	17	40
V-E13025-25MG	USA	Metric	\$147.05	30	-	25.0	55.0	17	3/8-16	68	28.0	30.0	71.0	59.0	22.0	17	40
V-E13032-125G	USA	Inch	\$162.35	30	1-1/4	-	62.0	24	3/8-16	68	28.0	30.0	75.0	63.0	22.0	20	44
V-E13032-32MG	USA	Metric	\$162.35	30	-	32.0	62.0	24	3/8-16	68	28.0	30.0	75.0	63.0	22.0	20	44
V-E13040-150G	USA	Inch	\$162.35	30	1-1/2	-	66.0	32	5/8-11	68	28.0	30.0	90.0	73.0	22.0	22	50
V-E13040-40MG	USA	Metric	\$162.35	30	-	40.0	66.0	32	5/8-11	68	28.0	30.0	90.0	73.0	22.0	22	50
V-E14016-062G	USA	Inch	\$186.15	40	5/8	-	54.0	12	3/8-16	83	32.5	-	67.0	54.0	22.0	15	35
V-E14016-16MG	USA	Metric	\$186.15	40	-	16.0	54.0	12	3/8-16	83	32.5	-	67.0	54.0	22.0	15	35
V-E14020-075G	USA	Inch	\$186.15	40	3/4	-	54.0	12	3/8-16	83	32.5	-	67.0	54.0	22.0	15	35
V-E14020-20MG	USA	Metric	\$186.15	40	-	20.0	54.0	12	3/8-16	83	32.5	-	67.0	54.0	22.0	15	35
V-E14025-100G	USA	Inch	\$186.15	40	1	-	63.0	17	3/8-16	83	32.5	-	75.0	59.0	22.0	17	40
V-E14025-25MG	USA	Metric	\$186.15	40	-	25.0	63.0	17	3/8-16	83	32.5	-	75.0	59.0	22.0	17	40
V-E14032-125G	USA	Inch	\$194.65	40	1-1/4	-	69.0	24	3/8-16	83	32.5	-	75.0	63.0	22.0	20	44
V-E14032-32MG	USA	Metric	\$194.65	40	-	32.0	69.0	24	3/8-16	83	32.5	-	75.0	63.0	22.0	20	44
V-E14040-150G	USA	Inch	\$194.65	40	1-1/2	-	76.0	32	5/8-11	83	32.5	-	90.0	73.0	22.0	22	54
V-E14040-40MG	USA	Metric	\$194.65	40	-	40.0	76.0	32	5/8-11	83	32.5	-	90.0	73.0	22.0	22	54
V-E14045-175G	USA	Inch	\$194.65	40	1-3/4	-	83.0	40	5/8-11	83	32.0	-	100.0	83.0	-	24	60
V-E14045-45MG	USA	Metric	\$194.65	40	-	45.0	83.0	40	5/8-11	83	32.0	-	100.0	83.0	-	24	60
V-E14050-200G	USA	Inch	\$194.65	40	2	-	81.0	32	5/8-11	83	32.5	-	100.0	83.0	22.0	24	60
V-E14050-50MG	USA	Metric	\$194.65	40	-	50.0	81.0	32	5/8-11	83	32.5	-	100.0	83.0	22.0	24	60
V-E15020-075G	USA	Inch	\$266.90	50	3/4	-	57.0	12	3/8-16	98	35.0	-	67.0	54.0	30.0	15	35
V-E15020-20MG	USA	Metric	\$266.90	50	-	20.0	57.0	12	3/8-16	98	35.0	-	67.0	54.0	30.0	15	35
V-E15025-100G	USA	Inch	\$266.90	50	1	-	63.0	17	3/8-16	98	35.0	-	80.0	59.0	30.0	17	40
V-E15025-25MG	USA	Metric	\$266.90	50	-	25.0	63.0	17	3/8-16	98	35.0	-	80.0	59.0	30.0	17	40
V-E15032-125G	USA	Inch	\$266.90	50	1-1/4	-	69.0	24	3/8-16	98	35.0	-	80.0	63.0	30.0	20	44
V-E15032-32MG	USA	Metric	\$266.90	50	-	32.0	69.0	24	3/8-16	98	35.0	-	80.0	63.0	30.0	20	44
V-E15040-150G	USA	Inch	\$266.90	50	1-1/2	-	76.0	32	5/8-11	98	35.0	-	100.0	73.0	30.0	22	54
V-E15040-40MG	USA	Metric	\$266.90	50	-	40.0	76.0	32	5/8-11	98	35.0	-	100.0	73.0	30.0	22	54
V-E15050-200G	USA	Inch	\$274.55	50	2	-	88.0	42	5/8-11	98	35.0	-	100.0	83.0	30.0	24	60
V-E15050-50MG	USA	Metric	\$274.55	50	-	50.0	88.0	42	5/8-11	98	35.0	-	100.0	83.0	30.0	24	60

Call Us Or Visit Our Website For Our Complete Selection!

VDI TOOLING

BORING BAR DUAL EXTERNAL COOLANT FORM E2



FORM E2																
Part Number	Manufacturer	Type	Price Each	D1	D2 in.	D2 mm	D6	D7	D8	D9	H1	H2	L3	L6	L7	G
V-E23006-025G	USA	Inch	\$155.55	30	1/4	-	68.0	14	55	10-32	28.0	30.0	22.0	60.0	51.0	5/8-18
V-E23008-031G	USA	Inch	\$155.55	30	5/16	-	68.0	16-1/2	55	1/4-20	28.0	30.0	22.0	60.0	51.0	5/8-11
V-E23010-037G	USA	Inch	\$155.55	30	3/8	-	68.0	16-1/2	55	1/4-20	28.0	30.0	22.0	60.0	51.0	5/8-11
V-E23012-050G	USA	Inch	\$155.55	30	1/2	-	68.0	16-1/2	55	1/4-20	28.0	30.0	22.0	60.0	51.0	5/8-11
V-E23016-062G	USA	Inch	\$155.55	30	5/8	-	68.0	16-1/2	55	1/4-20	28.0	30.0	22.0	60.0	51.0	5/8-11
V-E23020-075G	USA	Inch	\$155.55	30	3/4	-	68.0	16-1/2	55	1/4-20	28.0	30.0	22.0	60.0	51.0	5/8-11
V-E23025-100G	USA	Inch	\$155.55	30	1	-	68.0	16-1/2	55	1/4-20	28.0	30.0	22.0	60.0	51.0	5/8-11
V-E23032-125G	USA	Inch	\$170.85	30	1-1/4	-	68.0	16-1/2	68	3/8-16	28.0	30.0	22.0	75.0	61.0	5/8-11
V-E23032-125K	USST	Inch	\$110.44	30	1-1/4	-	68.0	16-1/2	68	3/8-16	28.0	30.0	22.0	75.0	61.0	5/8-11
V-E23040-150G	USA	Inch	\$194.65	30	1-1/2	-	83.0	41	74	1/2-13	32.0	30.0	22.0	90.0	74.0	5/8-18
V-E24008-031G	USA	Inch	\$194.65	40	5/16	-	83.0	20-1/2	55	1/4-20	32.5	-	22.0	75.0	61.0	5/8-11
V-E24010-037G	USA	Inch	\$194.65	40	3/8	-	83.0	20-1/2	55	1/4-20	32.5	-	22.0	75.0	61.0	5/8-11
V-E24010-037K	USST	Inch	\$138.20	40	3/8	-	83.0	20-1/2	55	1/4-20	32.5	-	22.0	75.0	61.0	5/8-11
V-E24012-050G	USA	Inch	\$194.65	40	1/2	-	83.0	20-1/2	55	3/8-16	32.5	-	22.0	75.0	61.0	5/8-11
V-E24012-050K	USST	Inch	\$138.20	40	1/2	-	83.0	20-1/2	55	3/8-16	32.5	-	22.0	75.0	61.0	5/8-11
V-E24016-062G	USA	Inch	\$194.65	40	5/8	-	83.0	20-1/2	55	3/8-16	32.5	-	22.0	75.0	61.0	5/8-11
V-E24016-062K	USST	Inch	\$138.20	40	5/8	-	83.0	20-1/2	55	3/8-16	32.5	-	22.0	75.0	61.0	5/8-11
V-E24020-075G	USA	Inch	\$194.65	40	3/4	-	83.0	20-1/2	55	3/8-16	32.5	-	22.0	75.0	61.0	5/8-11
V-E24020-075K	USST	Inch	\$138.20	40	3/4	-	83.0	20-1/2	55	3/8-16	32.5	-	22.0	75.0	61.0	5/8-11
V-E24025-100G	USA	Inch	\$194.65	40	1	-	83.0	20-1/2	55	1/2-13	32.5	-	22.0	75.0	61.0	5/8-11
V-E24025-100K	USST	Inch	\$175.00	40	1	-	83.0	20-1/2	55	1/2-13	32.5	-	22.0	75.0	61.0	5/8-11
V-E24032-125G	USA	Inch	\$203.15	40	1-1/4	-	83.0	20-1/2	83	1/2-13	32.5	-	22.0	75.0	61.0	5/8-11
V-E24040-150G	USA	Inch	\$203.15	40	1-1/2	-	83.0	20-1/2	83	1/2-13	32.5	-	22.0	90.0	76.0	5/8-11
V-E24040-150K	USST	Inch	\$175.00	40	1-1/2	-	83.0	20-1/2	83	1/2-13	32.5	-	22.0	90.0	76.0	5/8-11
V-E24045-175G	USA	Inch	\$203.15	40	1-3/4	-	83.0	46	74	1/2-13	32.0	-	22.0	90.0	74.0	5/8-18
V-E24050-200G	USA	Inch	\$203.15	40	2	-	83.0	51	83	3/8-16	32.0	-	-	100.0	86.0	5/8-18
V-E25012-050G	USA	Inch	\$275.40	50	1/2	-	98.0	26-1/2	68	3/8-16	35.0	-	30.0	90.0	76.0	5/8-11
V-E25016-062G	USA	Inch	\$275.40	50	5/8	-	98.0	26-1/2	68	1/2-13	35.0	-	30.0	90.0	76.0	5/8-11
V-E25020-075G	USA	Inch	\$275.40	50	3/4	-	98.0	26-1/2	68	1/2-13	35.0	-	30.0	90.0	76.0	5/8-11
V-E25025-100G	USA	Inch	\$275.40	50	1	-	98.0	26-1/2	68	1/2-13	35.0	-	30.0	90.0	76.0	5/8-11
V-E25032-125G	USA	Inch	\$275.40	50	1-1/4	-	98.0	26-1/2	68	1/2-13	35.0	-	30.0	90.0	76.0	5/8-11
V-E25040-150G	USA	Inch	\$275.40	50	1-1/2	-	98.0	26-1/2	98	1/2-13	35.0	-	30.0	90.0	76.0	5/8-11

COLLET CHUCKS- ER SERIES-FORM E3



Part Number	Manufacturer	Price Each	Collet Series	d1	d2 in	d2 mm	d6	d10	b1	L3	L8	L9	h1	h2	G
V-E33025-ER25G	USA	\$303.45	ER25	30	1/32-5/8	1-16	68.0	42	30	22	63.0	75.0	28.0	30.0	5/8-18
V-E33032-ER32G	USA	\$303.45	ER32	30	1/6-3/4	2-20	68.0	50	30	22	63.0	75.0	28.0	30.0	5/8-18
V-E33032-ER32K	USST	\$215.45	ER32	30	1/6-3/4	2-20	68.0	50	30	22	63.0	75.0	28.0	30.0	5/8-18
V-E33040-ER40G	USA	\$303.45	ER40	30	3/32-1-1/32	3-25	68.0	63	30	22	61.0	75.0	28.0	30.0	5/8-18
V-E33040-ER40K	USST	\$215.45	ER40	30	3/32-1-1/32	3-25	68.0	63	30	22	61.0	75.0	28.0	30.0	5/8-18
V-E34025-ER25G	USA	\$311.95	ER25	40	1/32-5/8	1-16	83.0	42	-	22	63.0	75.0	32.5	-	5/8-18
V-E34025-ER25K	USST	\$221.48	ER25	40	1/32-5/8	1-16	83.0	42	-	22	63.0	75.0	32.5	-	5/8-18
V-E34032-ER32G	USA	\$311.95	ER32	40	1/16-3/4	2-20	83.0	50	-	22	63.0	75.0	32.5	-	5/8-18
V-E34032-ER32K	USST	\$221.48	ER32	40	1/16-3/4	2-20	83.0	50	-	22	63.0	75.0	32.5	-	5/8-18
V-E34040-ER40G	USA	\$311.95	ER40	40	3/32-1-1/32	3-25	83.0	63	-	22	61.0	75.0	32.5	-	5/8-18
V-E34040-ER40K	USST	\$221.48	ER40	40	3/32-1-1/32	3-25	83.0	63	-	22	61.0	75.0	32.5	-	5/8-18

Call Us Today For All Of Your Machine Tool Needs!