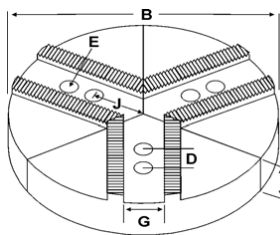
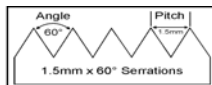


ROUND JAWS- 1.5 mm x 60° Serrations

FOR USE ON: **Kitagawa, Samchully, Strong, MMK, SMW Autoblok, Howa & Hitachi-Seiki Chucks**



Group
K1



- Round Jaws allow for complete gripping of workpiece
- Oversized jaws available
- Ideal for thin-walled or irregular shaped workpieces.
- Can be machined to fit workpiece
- Max. length of serrations: 5.75"
- All jaws have 2 holes
- Special "J" dimensions available
- Available in Aluminum, Cast Iron & Steel
- **Made in the USA**



Please See
Page 12 For
Hard Jaws

Group No.	Chuck Size	Critical Dimensions			ALUMINUM				CAST IRON		STEEL			
		Groove Width G	Screw Size E	Hole Space D	Hole to Front J	Pie Dia B	Height Inch A	Industry Ref #	Part Number	Price Set of 3	Part Number	Price Set of 3	Part Number	Price Set of 3
K1-16-30	10	0.630 (16mm)	12mm	1.181 (30mm)	2.155	8	2.00	-	8-RKT-10200A	\$103.98	-	-	-	-
KITAGAWA B-10, B-210, BL-210, BLT-210 Big-Bore BB210†					2.375	10	2.00	-	RKT-10200A	\$120.78	RKT-10200CI	\$172.80	RKT-10200S	\$338.55
					2.500†	10	2.00	KTT10P	RKT-10200A4	\$120.78	-	-	-	
					2.650†	10	2.00	AKT10FG	RKT-10200A5	\$120.78	-	-	-	
					2.750†	10	2.00	HAR10MSHP	RHA-10200A	\$120.78	-	-	-	
					2.375	10	2.50	-	RKT-10250A	\$155.00	-	-	-	
							3.00	-	RKT-10300A	\$160.28	-	-	RKT-10300S	\$441.59
					Samchully HS10	2.650†	10	3.00	AKT10MHFG	RKT-10300A5	\$160.28	-	-	-
						2.375	10	4.00	-	RKT-10400A	\$176.50	RKT-10400CI	\$307.19	-
					STRONG N210	2.500†	10	4.00	KTT10P1	RKT-10400A4	\$187.42	-	-	-
						2.650†	10	3.00	AKT10EHFG	RKT-10400A5	\$187.42	-	-	-
MMK HA 8-11, HA6-10, HA8-10					2.750†	10	4.00	HAR10MSHP1	RHA-10400A	\$187.42	-	-	-	
					2.375	10	5.00	-	RKT-10500A	\$280.05	-	-	-	
							6.00	-	RKT-10600A	\$361.80	-	-	-	
HOWA H3KT10					2.500†	10	6.00	KTT10P6	RKT-10800A	\$542.00	-	-	-	
					2.375	10	6.00	KTT10P6	RKT-10600A4	\$361.80	-	-	-	
SMW Autoblok ANM 250, BBM-250, BHM-250					2.375	12	2.00	-	12-RKT-10200A	\$160.87	12-RKT-10200CI	\$243.80	-	
					2.500†	12	2.00	KTT12-10P	12-RKT-10200A4	\$167.58	-	-	-	
					2.375	12	2.50	-	12-RKT-10250A	\$162.50	-	-	-	
							4.00	-	12-RKT-10400A	\$272.00	-	-	-	
					2.500†	12	4.00	KTT12-10P1	12-RKT-10400A4	\$306.48	-	-	-	
					2.375	15	2.50	-	15-RKT-10250A	\$392.31	15-RKT-10250CI	\$447.98	-	
					2.500†	15	3.00	KTT15-10P	15-RKT-10300A4	\$425.00	-	-	-	
					2.375	15	4.00	-	15-RKT-10400A	\$481.98	-	-	-	
					2.500†	15	4.00	KTT15-10P1	15-RKT-10400A4	\$481.98	-	-	-	
					2.375	18	6.00	-	15-RKT-10600A*	\$833.53	-	-	-	
							2.50	-	18-RKT-10250A	\$499.54	-	-	-	
					2.500†	18	3.00	KTT18-10P	18-RKT-10300A4	\$555.00	-	-	-	
2.375					18	4.00	-	18-RKT-10400A	\$674.80	-	-	-		
2.500†					21	4.00	KTT18-10P1	18-RKT-10400A4	\$674.80	-	-	-		
	3.00	KTT21-10P	21-RKT-10300A4	\$699.00		-	-	-						
2.375	21	4.00	-	21-RKT-10400A	\$899.87	-	-	-						
2.500†	21	4.00	KTT21-10P1	21-RKT-10400A4	\$899.87	-	-	-						
2.375	24	4.00	-	24-RKT-10400A*	\$1,252.35	-	-	-						
K1-16-32	10	0.630 (16mm)	12mm	1.250	2.375	10	2.00	-	RMT-10200A	\$120.78	RMT-10200CI	\$172.80	RMT-10200S	\$338.55
1.260				2.875	10	2.00	MTT10P	RMT-10200A4	\$120.78	-	-	-		
1.250 (32mm)				2.375	10	2.50	-	RMT-10250A	\$175.31	-	-	-		
						3.00	-	RMT-10300A	\$160.28	-	-	RMT-10300S	\$441.59	
						4.00	-	RMT-10400A	\$187.42	RMT-10400CI	\$307.19	-	-	
1.260				2.875	10	4.00	MTT10P1	RMT-10400A4	\$187.42	-	-	-		
1.250 (32mm)				2.375	10	5.00	-	RMT-10500A	\$280.05	-	-	-		
						6.00	-	RMT-10600A	\$390.33	-	-	-		
						2.00	-	12-RMT-10200A	\$170.77	-	-	-		
						4.00	-	12-RMT-10400A	\$282.00	-	-	-		
						2.50	-	15-RMT-10250A	\$392.31	-	-	-		
18				4.00	-	18-RMT-10400A*	\$674.80	-	-	-				

Round Jaw Material: ALUMINUM-6061-T6 Bar Stock, CAST IRON-Gray, STEEL-1018. 18" & Larger- Aluminum Casting T6
For complete list of applicable chucks, see pages 632-644. * denotes non-stock item. Please allow 1 week manufacturing time.

Call Us Today For All Of Your Machine Tool Needs!

2010-11 Master Catalog

SOFT JAWS- 1.5 mm x 60° Serrations

C

LATHE CHUCKS
LIVE CENTERS

WISE JAWS
WISE ACCESSORIES

STRAIGHT SHANK
COLLET HOLDERS

LATHE BUSHINGS
DRILL CHUCKS

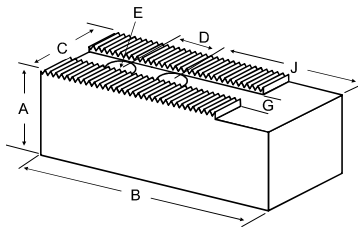
CARBIDE INSERTS
THREADING/GROOVING

CUTTING TOOLS
MACHINERY

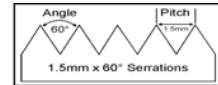
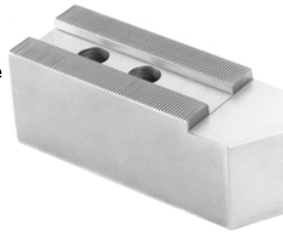
PRECISION TOOLS
DEBURRING

COOLANT/FLUIDS
TOOL STORAGE

FOR USE ON: **Kitagawa, Samchully, Strong, MMK, SMW Autoblok, Howa & Hitachi-Seiki Chucks**



- Supplies maximum concentricity on finish turning operations
- Can be bored or turned to fit workpiece
- Steel jaws can be hardened
- Available flat ended or pointed for smaller diameter parts
- Special orders available
- Available in Aluminum, Steel & Aircraft Aluminum (where noted)



Group

K1

QUANTITY DISCOUNTS!
Order **5 SETS OR MORE** of the same part number soft jaw and receive a **5% DISCOUNT!**

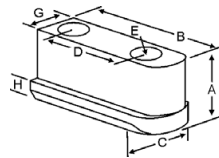
Group No.	Chuck Size	Critical Dimensions			Hole to Front J	Width Inch C	Length Inch B	Hght Inch A	No. of Holes	ALUMINUM		STEEL	
		Groove Width G	Screw Size E	Hole Space D						FLAT END Part Number	Price Set Of 3	FLAT END Part Number	Price Set Of 3
K1-16-30	10	0.630 (16mm)	12mm	1.181 (30mm)	2.375	1.500	4.500	2.000	2	KT-10200AF	\$43.25	KT-10200F	\$36.72
KITAGAWA B-10, B-210, BL-210, BLT-210 Big-Bore BB210†								2.000	2	KT-10200BF	\$60.62	-	-
								3.000	2	KT-10300AF	\$50.75	KT-10300F	\$48.75
								3.000	2	KT-10300BF	\$84.85	-	-
								4.000	2	KT-10400AF	\$62.25	KT-10400F	\$60.25
								4.000	2	KT-10400BF	\$104.81	-	-
					5.000	2	KT-10500AF	\$165.08	KT-10500F	\$146.00			
Samchully HS10 HH210					6.000	2	KT-10600AF	\$206.24	KT-10600F	\$220.80			
					2.000	2	KT-10202AF*	\$55.29	KT-10202F*	\$52.87			
					2.875	1.500	5.000	2.000	2	KT-10201AF	\$52.15	KT-10201F	\$39.47
								2.000	2	KT-10201BF	\$78.99	-	-
								3.000	2	KT-10301AF	\$67.99	KT-10301F	\$53.96
								4.000	2	KT-10401AF	\$77.98	KT-10401F	\$68.28
2.000					5.250	2.000	2	KT-10205AF	\$61.50	KT-10205F	\$65.19		
						2.000	2	KT-10205BF	\$87.69	-	-		
						3.000	2	KT-10305AF	\$74.78	KT-10305F	\$78.84		
						4.000	2	KT-10405AF	\$86.65	KT-10405F	\$90.97		
HURON EQUIVALENT					4.750	2.000	-	-	-	KT-10	\$43.00		
	3.000	-	-	-		KT-10MH	\$57.00						
	1.750	4.000	-	-	-	KT-10EH	\$67.00						
		2.000	-	-	-	KT-10PL	\$54.00						
		3.000	-	-	-	KT-10MHPL	\$65.00						
		4.000	-	-	-	KT-10EHPL	\$74.00						
K1-16-32	10	0.630 (16mm)	12mm	1.250 (32mm)	2.375	1.500	4.500	2.000	2	MT-10200AF	\$51.22	MT-10200F	\$54.59
3.000								2	MT-10300AF	\$62.85	MT-10300F	\$66.72	
4.000								2	MT-10400AF	\$73.72	MT-10400F	\$70.09	
5.000								2	MT-10500AF	\$165.08	MT-10500F	\$176.64	
5.000								2.000	2	MT-10201AF	\$55.29	MT-10201F	\$58.88
								3.000	2	MT-10301AF	\$67.99	MT-10301F	\$72.14
								4.000	2	MT-10401AF	\$77.98	MT-10401F	\$82.43
								For Hitachi-Seiki ZA_-10, HA_-10	2.000	2	MT-10200AF	\$51.22	MT-10200F

For "Pointed" Soft Jaws, please substitute "P" for "F" in the part number. Example: KT-10200AF will be KT-10200AP. Add \$3.25 For Pointed Jaws

Soft Jaw Material: ALUMINUM-6061-T6 Bar Stock, STEEL-1018 or 1050, "B" JAWS-7075-T6 Aircraft Aluminum

For complete list of applicable chucks, see pages 632-644. * denotes non-stock item-Please allow 1 week manufacturing time.

JAW NUTS & SCREWS



USST™

Chuck Make & Model	Chuck Size	Critical Dimensions						2 Screws Included With Each Jaw Nut					
		Heel Height H	Groove Width G	Screw Size Pitch & Length E	Hole Space D	Hght Inch A	Width Inch C	Length Inch B	Jaw Nut Part Number	Price Each	Screw Order Number	Price Each	
Kitagawa: B-210,BT-210 Strong: N210 MMK:H-10,HA8-11 Samchully: HS-10	10	0.335	0.628 (16mm)	M12-1.75x30mm	1.181 (30mm)	0.846	0.886	1.981	KT-100JN	\$23.84	M1217530	\$2.00	
Kitagawa:B-10,HOB-10	10	0.374	0.628 (16mm)	M12-1.75x35mm	1.181 (30mm)	1.000	0.886	2.160	KT-101JN	\$29.44	M1217535	\$2.00	
MMK:ZA_-10	10	0.315	0.628 (16mm)	M12-1.75x35mm	1.181 (30mm)	0.906	0.906	1.971	MT-101JN	\$39.93	M1217535	\$2.00	
Hitachi-Seiki ZA/ZA_-10	10	0.315	0.628 (16mm)	M12-1.75x35mm	1.259 (32mm)	0.906	0.906	2.050	MT-100JN	\$29.44	M1217535	\$2.00	
Howa: HO15M12,HO22M12	10	0.374	0.708 (18mm)	M14-2.00x40mm	1.181 (30mm)	1.083	0.945	2.360	HO-100JN	\$29.44	M1420040	\$2.00	

Call Us Or Visit Our Website For Our Complete Selection!

2010-11 Master Catalog

25