

# 4-IN-1 INDEXABLE DRILLS

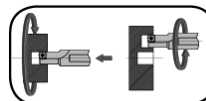
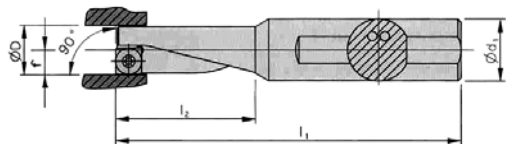
## SHARK-CUT® INDEXABLE COOLANT THRU DRILLS

**ARNO ROUSE**  
PRECISION TOOLING

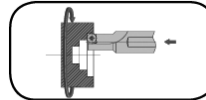


**Cost Reduction Through Performance!**  
**4-in-1 Indexable Coolant Thru Drill**

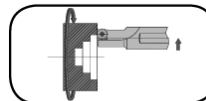
- High performance drilling and turning system-effective and productive!
- CNC polished inserts (AWI/WI) are available in coated or non-coated finish
- Extremely efficient boring tool
- suitable for turning and boring
- Four machining processes possible with one tool!
- Maximum precision and process dependability
- All holders are equipped with an internal coolant feed
- Drilling depths up to 3X D



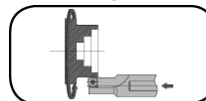
Drilling with Flat Bottom



Internal Turning



Facing Operations



External Turning



**Drill, Turn, Bore & Face**  
**With One Tool!**  
Drill Diameters:

MM: 8mm to 32mm  
Inch: .315" to 1.250"



### INCH SHANK 1.5 x D

Drill Dia Inch	Shank Inch	F Inch	L2 Inch Drill Depth	L1 Inch OAL	Part Number	Price	Manufacturer's Reference #	Insert Series
0.315	0.500	0.16	0.48	3.15	RA08R-1205G04E	\$162.45	SC08R-0012G04E	04
0.394	0.500	0.20	0.60	3.55	RA10R-1505G05E	\$162.45	SC10R-0015G05E	05
0.472	0.625	0.24	0.71	3.94	RA12R-1862G06E	\$162.45	SC12R-0018G06E	06
0.551	0.625	0.28	0.83	4.33	RA14R-2162G07E	\$170.10	SC14R-0021G07E	07
0.630	0.750	0.32	0.95	4.92	RA16R-2475G08E	\$170.10	SC16R-0024G08E	08
0.708	1.000	0.36	1.07	5.32	RA18R-2710G09E	\$200.85	SC18R-0027G09E	09
0.787	1.000	0.40	1.19	5.91	RA20R-3010G10E	\$219.65	SC20R-0030G10E	10
0.984	1.250	0.50	1.48	7.09	RA25R-3812G13E	\$253.80	SC25R-0038G13E	13
1.250	1.500	0.63	1.89	7.88	RA32R-4815G17E	\$286.25	SC32R-0048G17E	17

### INCH SHANK 2.25 x D

Drill Dia Inch	Shank Inch	F Inch	L2 Inch Drill Depth	L1 Inch OAL	Part Number	Price	Manufacturer's Reference #	Insert Series
0.315	0.375	0.16	0.71	2.37	RA08R-1837SP04E	\$244.35	SC08R-0018SP04E	04
0.394	0.500	0.20	0.89	2.74	RA10R-2305SP05E	\$244.35	SC10R-0023SP05E	05
0.472	0.625	0.24	1.07	3.07	RA12R-2762SP06E	\$244.35	SC12R-0027SP06E	06
0.551	0.625	0.28	1.24	3.29	RA14R-3262SP07E	\$255.75	SC14R-0032SP07E	07
0.630	0.750	0.32	1.42	3.70	RA16R-3675SP08E	\$255.75	SC16R-0036SP08E	08
0.708	1.000	0.36	1.60	4.31	RA18R-4110SP09E	\$289.15	SC18R-0041SP09E	09
0.787	1.000	0.40	1.78	4.37	RA20R-4510SP10E	\$307.70	SC20R-0045SP10E	10
0.984	1.250	0.50	2.23	5.08	RA25R-5712SP13E	\$356.20	SC25R-0057SP13E	13
1.250	1.500	0.63	2.84	6.22	RA32R-7215SP17E	\$400.70	SC32R-0072SP17E	17

### METRIC SHANK 1.5 x D

Drill Dia mm	Shank mm	F mm	L2 Drill Depth	L1 OAL	Part Number	Price	Manufacturer's Reference #	Insert Series
08	12	4.0	12	80	RA08R-1212G04	\$162.45	SC08R-0012G04	04
10	12	5.0	15	90	RA10R-1512G05	\$162.45	SC10R-0015G05	05
12	16	6.0	18	100	RA12R-1816G06	\$162.45	SC12R-0018G06	06
14	16	7.0	21	110	RA14R-2116G07	\$170.10	SC14R-0021G07	07
16	20	8.0	24	125	RA16R-2420G08	\$170.10	SC16R-0024G08	08
18	25	9.0	27	135	RA18R-2725G09	\$200.85	SC18R-0027G09	09
20	25	10.0	30	150	RA20R-3025G10	\$219.65	SC20R-0030G10	10
25	32	12.5	37	180	RA25R-3832G13	\$253.80	SC25R-0038G13	13
32	40	16.0	48	200	RA32R-4840G17	\$286.25	SC32R-0048G17	17

### METRIC SHANK 2.25 x D

Drill Dia mm	Shank mm	F mm	L2 Drill Depth	L1 OAL	Part Number	Price	Manufacturer's Reference #	Insert Series
08	12	4.0	18	60	RA08R-1812SP04	\$244.35	SC08R-0018SP04	04
10	12	5.0	22.5	69.5	RA10R-2312SP05	\$244.35	SC10R-0023SP05	05
12	16	6.0	27	78	RA12R-2716SP06	\$244.35	SC12R-0027SP06	06
14	16	7.0	31.5	83.5	RA14R-3216SP07	\$255.75	SC14R-0032SP07	07
16	20	8.0	36	94	RA16R-3620SP08	\$255.75	SC16R-0036SP08	08
18	25	9.0	40.5	109.5	RA18R-4125SP09	\$289.15	SC18R-0041SP09	09
20	25	10.0	45	111	RA20R-4525SP10	\$307.70	SC20R-0045SP10	10
25	32	12.5	56.5	129	RA25R-5732SP13	\$356.20	SC25R-0057SP13	13
32	40	16.0	72	158	RA32R-7240SP17	\$400.70	SC32R-0072SP17	17

See Inserts On Following Page



Call Us Today For All Of Your Machine Tool Needs!

2010-11 Master Catalog

CHUCK JAWS  
LATHE WORKHOLDING

MACHINE VISES  
MAGNETIC CHUCKS

RETENTION KNOBS  
ER, DA, TG COLLETS

TOOLHOLDERS  
TAP HOLDERS

INDEXABLE DRILLS  
TURNING & BORING

ENDMILLS, DRILLS  
TAPS & REAMERS

ABRASIVES  
MEASURING TOOLS

MRO & SAFETY  
FLAT STOCK/DRILL ROD

# INSERTS FOR 4-in-1 INDEXABLE DRILLS

A

LATHE CHUCKS  
LIVE CENTERS

VICE JAWS  
VICE ACCESSORIES

STRAIGHT SHANK  
COLLET HOLDERS

LATHE BUSHINGS  
DRILL CHUCKS

CARBIDE INSERTS  
THREADING/GROOVING

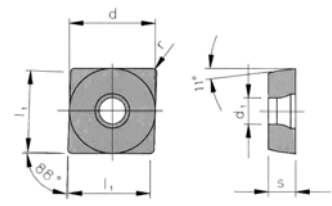
CUTTING TOOLS  
MACHINERY

PRECISION TOOLS  
DEBURRING

COOLANT/FLUIDS  
TOOL STORAGE

## INSERTS FOR SHARK-CUT® INDEXABLE DRILLS

**ARNO ROUSE**  
PRECISION TOOLING



Insert Series	Manufacturer Reference #	AL350		AM35C	
		Coated C3/C4 Inserts Part Number	Price Each	Coated C5 Inserts Part Number	Price Each
04	LPNT040104ER	RA-04RN04-AL350	\$14.25	RA-04RN04-AM35C	\$14.25
05	LPNT050204EN	RA-05N04-AL350	\$14.25	RA-05N04-AM35C	\$14.25
06	LPNT060204EN	RA-06N04-AL350	\$14.25	RA-06N04-AM35C	\$14.25
07	LPNT070304EN	RA-07N04-AL350	\$14.25	RA-07N04-AM35C	\$14.25
08	LPNT080304EN	RA-08N04-AL350	\$14.53	RA-08N04-AM35C	\$14.53
09	LPNT09T304EN	RA-09N04-AL350	\$15.30	RA-09N04-AM35C	\$15.30
10	LPNT10T304EN	RA-10N04-AL350	\$15.30	RA-10N04-AM35C	\$15.30
13	LPNT130404EN	RA-13N04-AL350	\$17.81	RA-13N04-AM35C	\$17.81
17	LPNT170508EN	RA-17N08-AL350	\$17.96	RA-17N08-AM35C	\$17.96

Insert Series	Manufacturer Reference #	AK10		AL10	
		Uncoated C2 Inserts (Wiper) Part Number	Price Each	Coated C2-C3 Inserts (Wiper) Part Number	Price Each
04	LPET040104FR	RA-04RE04-AK10	\$15.91	RA-04RE04-AL10	\$18.00
05	LPET050204FN	RA-05E04-AK10	\$15.91	RA-05E04-AL10	\$18.00
06	LPET060204FN	RA-06E04-AK10	\$15.91	RA-06E04-AL10	\$18.00
07	LPET070304FN	RA-07E04-AK10	\$15.91	RA-07E04-AL10	\$18.00
08	LPET080304FN	RA-08E04-AK10	\$16.20	RA-08E04-AL10	\$18.24
09	LPET09T304FN	RA-09E04-AK10	\$16.43	RA-09E04-AL10	\$18.62
10	LPET10T304FN	RA-10E04-AK10	\$16.72	RA-10E04-AL10	\$18.86
13	LPET130404FN	RA-13E04-AK10	\$21.19	RA-13E04-AL10	\$23.13
17	LPET170508FN	RA-17E08-AK10	\$21.19	RA-17E08-AL10	\$23.13

Arno Rouse Grade	Description	Coating	Material
AL350	COATED C3/C4	TIALN COAT	Stainless; High Temp Alloys
AK10	UNCOATED C2	UNCOATED	Aluminum, Plastics And Non Ferrous
AL10	COATED C2-C3	TIALN COAT	Super Alloys
AM35C	COATED C5	TIALN COAT	Steels

### Grooving

Strength through Performance

- Modular grooving system with just one basic work holding tool
- Internal and external machining
- Special geometries for aluminum and copy-turning



**Clip Groove**  
The tool for shape grooving.



**Short-Cut**  
Robust grooving and copy turning tool for axial and radial machining.

**ARNO ROUSE**  
PRECISION TOOLING

**FULL LINE AVAILABLE!**

**Please Call For More Information!**

### Turning

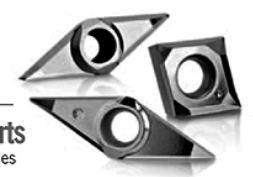
Tools and indexable inserts for turning and threading

The ARNO® turning range comprises of a large selection of tool holders for internal and external machining with various types of clamping systems for all machining tasks.

- Face mills
- End mills
- Chamfer mills



**High Positive Inserts**  
Special Developed Geometries



**Call Us Or Visit Our Website For Our Complete Selection!**