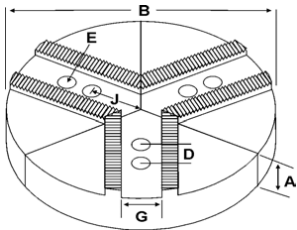
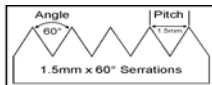
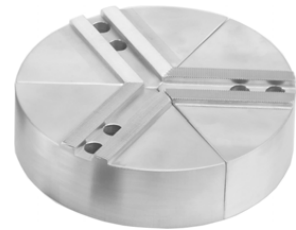


# ROUND JAWS- 1.5 mm x 60° Serrations

FOR USE ON: **Kitagawa, Samchully, Strong, MMK, SMW Autoblok, Howa & Hitachi-Seiki Chucks**



- Round Jaws allow for complete gripping of workpiece
- Oversized jaws available
- Ideal for thin-walled or irregular shaped workpieces.
- Can be machined to fit workpiece
- Max. length of serrations: 5.75"
- All jaws have 2 holes
- Special "J" dimensions available
- Available in Aluminum & Cast Iron
- **Made in the USA**



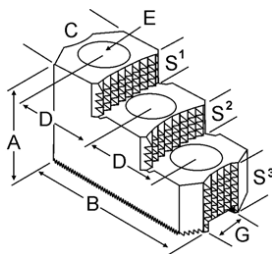
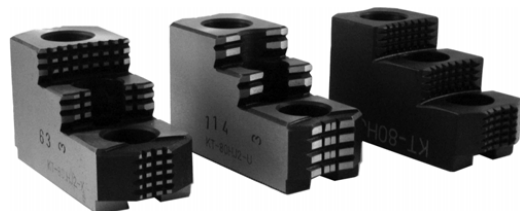
Group



Group No.	Chuck Size	Critical Dimensions				ALUMINUM			CAST IRON								
		Groove Width G	Screw Size E	Hole Space D	Hole to Front J	Part Number	Price Set of 3	Part Number	Price Set of 3								
<b>K1-22-43</b> KITAGAWA BT-15, B-15,B-18 HOB-15, HOB-18, HOH-15, HOH-18  SAMCHULLY HAH/HCH 15 HAH/HCH 18	<b>15 &amp; UP</b>	0.866 (22mm)	20mm	1.690 (43mm)	3.750	12	4.00	-	12-RKT-15400A*	\$306.48	-	-					
							2.50	-	RKT-15250A	\$392.31	RKT-15250CI	\$447.98					
						15	4.00	-	RKT-15400A	\$481.98	-	-					
							5.00	-	RKT-15500A	\$753.41	-	-					
						18	6.00	-	RKT-15600A*	\$833.53	-	-					
							2.50	-	18-RKT-15250A	\$499.54	-	-					
						18	4.00	-	18-RKT-15400A	\$674.80	-	-					
							2.50	-	21-RKT-15250A	\$719.47	-	-					
						21	4.00	-	21-RKT-15400A*	\$899.87	-	-					
							2.50	-	24-RKT-15250A*	\$867.50	-	-					
						24	4.00	-	24-RKT-15400A	\$1,252.35	-	-					
<b>K1-22-60</b>	<b>15 &amp; UP</b>	0.866 (22mm)	20mm	2.360 (60mm)	3.750	15	2.50	-	RKT-15252A	\$328.00	RKT-15252CI	\$447.98					
					3.188 (3-3/16)	15	3.00	KTT15P-2.36	RKT-15302A2	\$425.00	-	-					
					3.750	15	4.00	-	RKT-15402A	\$481.98	-	-					
						18	2.50	-	18-RKT-15252A	\$499.54	-	-					
					18	4.00	-	18-RKT-15402A	\$674.80	-	-						
						21	4.00	-	21-RKT-15402A	\$899.87	-	-					
					24	4.00	-	24-RKT-15402A	\$1,252.35	-	-						
					<b>K1-26-43</b> KITAGAWA B-215, N15, N18  STRONG N215	<b>15 &amp; UP</b>	1.005 (25.5mm)  (some mfg's refer to this as 1.004)	20mm	1.690 (43mm)	3.750	12	3.00	-	12-RKT-15301A	\$292.45	-	-
									1.693 (43mm)	4.313 (4-5/16)	15	2.50	-	RKT-15251A	\$328.00	RKT-15251CI	\$447.98
												4.00	-	RKT-15401A	\$475.00	-	-
									1.690 (43mm)	3.750	15	2.00	KTTB215P2	RKT-15201A4	\$325.00	-	-
3.00	KTTB215P	RKT-15301A4	\$425.00	-								-					
1.693 (43mm)	4.313 (4-5/16)	18	4.00	KTTB215P1					RKT-15401A4	\$481.98	-	-					
			5.00	-					RKT-15501A	\$753.41	-	-					
1.690 (43mm)	3.750	18	2.50	-					18-RKT-15251A	\$499.54	-	-					
			4.00	-					18-RKT-15401A	\$674.80	-	-					
1.693 (43mm)	4.313 (4-5/16)	18	3.00	KTT18B215P					18-RKT-15301A4	\$555.00	-	-					
			4.00	KTT18B215P1					18-RKT-15401A4	\$674.80	-	-					
1.690 (43mm)	3.750	21	3.00	KTT21B215P					21-RKT-15301A4	\$699.00	-	-					
			4.00	-	21-RKT-15401A	\$899.87	-	-									
1.690 (43mm)	3.750	24	2.50	-	24-RKT-15251A	\$750.00	-	-									
			4.00	-	24-RKT-15401A	\$1,252.35	-	-									

Round Jaw Material: ALUMINUM-6061-T6 Bar Stock, CAST IRON-Gray, STEEL-1018, 18" & Larger- Alum A319 6061-T6  
For complete list of applicable chucks, see pages 632-644. \* denotes non-stock item. Please allow 1 week manufacturing time.

## HARD JAWS- 2 STEP



- Designed for first operation roughing, expect standard runout between 0.005-0.010
- Reversible-suitable for OD & ID workholding.
- **XTRA BITE** -very aggressive bite. Has conical teeth for extra gripping power and ground body to provide improved runout.
- **GRIP-RITE-OEM Style** hard jaws have ground tips and provide better runout.
- **SHARK JAWS** have conical teeth for extra gripping power and black oxide for long life. Ideal for castings and scaly material. Made in the USA.
- 1 & 2 step jaws available.

Group Number	Chuck Size	Critical Dimensions				Width C	OAL B	Height A	No. of Holes	No. of Steps	Top Step Ht S1	Mid Step Ht S2	Bot Step Ht S3	Part Number	Price Per Set	Style	Code
		Groove Width G	Screw Size E	Hole Space D	Hole to Front J												
<b>K1-22-43</b> B-15, B-18, BT-15	<b>15 &amp; 18</b>	0.866 (22mm)	20mm	1.693 (43mm)	2.500	5.400	3.000	3	2	0.730	0.730	1.540	KT-150HJ2	\$571.66	Shark Jaws	D	
					2.448	5.850	3.385	3	2	0.827	0.827	1.731	KT-150HJ2-U	\$498.75	OEM Style	E	
					2.500	5.500	3.500	3	2	0.950	0.950	1.600	KT-150HJ2-X	\$525.00	XTRA-BITE	E	
<b>K1-26-43</b> B-215 N18, N15	<b>15 &amp; 18</b>	1.005 (25.5mm)	20mm	1.690 (43mm)	2.500	5.400	3.000	3	2	0.730	0.730	1.540	KT-151HJ2	\$571.66	Shark Jaws	D	
					2.448	5.850	3.385	3	2	0.827	0.827	1.731	KT-151HJ2-U	\$498.75	OEM Style	E	
					2.500	5.500	3.500	3	2	0.950	0.950	1.600	KT-151HJ2-X	\$525.00	XTRA-BITE	E	

Call Us Today For All Of Your Machine Tool Needs!

2010-11 Master Catalog

# SOFT JAWS- 1.5 mm x 60° Serrations

C

LATHE CHUCKS  
LIVE CENTERS

WISE JAWS  
WISE ACCESSORIES

STRAIGHT SHANK  
COLLET HOLDERS

LATHE BUSHINGS  
DRILL CHUCKS

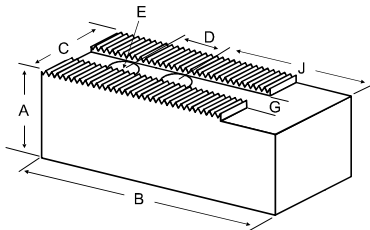
CARBIDE INSERTS  
THREADING/GROOVING

CUTTING TOOLS  
MACHINERY

PRECISION TOOLS  
DEBURRING

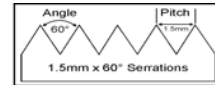
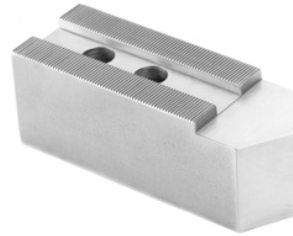
COOLANT/FLUIDS  
TOOL STORAGE

FOR USE ON: **Kitagawa, Samchully, Strong, MMK, SMW Autoblok, Howa & Hitachi-Seiki Chucks**



• Max. length of serrations: 5.75"

- Supplies maximum concentricity on finish turning operations
- Can be bored or turned to fit workpiece
- Steel jaws can be hardened
- Available flat ended or pointed for smaller diameter parts
- Special orders available
- Available in Aluminum, Steel & Aircraft Aluminum (where noted)



Group

K1

**QUANTITY DISCOUNTS!**

Order **5 SETS OR MORE** of the same part number soft jaw and receive a **5% DISCOUNT!**

Group No.	Chuck Size	Critical Dimensions			ALUMINUM					STEEL			
		Groove Width G	Screw Size E	Hole Space D	Hole to Front J	Width Inch C	Length Inch B	Hght Inch A	No. of Holes	FLAT END Part Number	Price Set Of 3	FLAT END Part Number	Price Set Of 3
<b>K1-21-45</b>	14 or 16	0.827 (21mm)	16mm	1.771 (45mm)	2.980	2.000	6.250	2.500	2	NK-14250AF*	61.48	NK-14250F*	61.20
								3.500	2	NK-14350AF*	86.09	NK-14350F*	73.96
					3.980	2.000	7.250	2.500	2	NK-14257AF*	71.33	NK-14257F*	69.93
								3.500	2	NK-14357AF*	99.80	NK-14357F*	84.50
<b>K1-22-43</b> KITAGAWA BT-15,B-15, B-18 HOB-15,HOB-18, HOH-15,HOH-18 SAMCHULLY HAH/HCH 15 HAH/HCH 18	15 & Up	0.866 (22mm)	20mm	1.690 (43mm)	3.437	2.500	6.500	2.500	2	KT-15250AF	93.55	KT-15250F	98.13
								2.500	2	KT-15250BF	134.17	-	-
								3.000	2	KT-15300AF	102.02	KT-15300F	110.68
								4.000	2	KT-15400AF	123.14	KT-15400F	128.88
					4.437	2.500	7.500	5.000	2	KT-15500AF	200.53	KT-15500F	162.62
								6.000	2	KT-15600AF	264.29	KT-15600F	279.68
								2.500	2	KT-15255AF	100.82	KT-15255F	106.00
								4.000	2	KT-15405AF	133.91	KT-15405F	139.85
								2.500	2	KT-15252AF	93.55	KT-15252F	95.34
								3.000	2	KT-15302AF	108.05	KT-15302F	113.71
<b>K1-22-60</b>	15 & Up	0.866 (22mm)	20mm	2.360 (60mm)	2.750	2.500	6.500	4.000	2	KT-15402AF	123.14	KT-15402F	128.88
								6.000	2	KT-15602AF	264.29	KT-15602F	279.68
								2.500	2	KT-15257AF	100.82	KT-15257F	106.00
								4.000	2	KT-15407AF	133.91	KT-15407F	139.85
					3.750	2.500	7.500	2.500	2	KT-15252AF	93.55	KT-15252F	95.34
								3.000	2	KT-15302AF	108.05	KT-15302F	113.71
								4.000	2	KT-15402AF	123.14	KT-15402F	128.88
								6.000	2	KT-15602AF	264.29	KT-15602F	279.68
<b>K1-26-38</b>	16	1.003 (25.5mm)	20mm	1.496 (38mm)	2.940	2-1/2	5.500	2.500	2	AB-16250AF*	79.17	AB-16250F*	83.03
								3.500	2	AB-16350AF*	110.84	AB-16350F*	116.25
								5.000	2	AB-16500AF*	158.32	AB-16500F*	137.60
					3.940	2-1/2	6.500	2.500	2	AB-16257AF*	93.55	AB-16257F*	98.13
								3.500	2	AB-16357AF*	130.97	AB-16357F*	137.39
								5.000	2	AB-16507AF*	187.11	AB-16507F*	162.62
<b>K1-26-43</b> KITAGAWA B-215, N15, N18 STRONG N215	15 & Up	1.005 (25.5mm) (some mfg's refer to this as 1.004)	20mm	1.690 (43mm)	3.437	2.500	6.500	2.500	2	KT-15251AF	93.55	KT-15251F	98.56
								2.500	2	KT-15251BF	134.17	-	-
								3.000	2	KT-15301AF	114.54	KT-15301F	120.75
								4.000	2	KT-15401AF	123.14	KT-15401F	128.88
					4.437	2.500	7.500	5.000	2	KT-15501AF	200.53	KT-15501F	155.61
								6.000	2	KT-15601AF	264.29	KT-15601F	279.68
								2.500	2	KT-15256AF	100.82	KT-15256F	106.00
								4.000	2	KT-15406AF	133.91	KT-15406F	139.85

For "Pointed" Soft Jaws, please substitute "P" for "F" in the part number. Example: NK-14250AF will be NK-14250AP. Pointed Jaws add \$6.50.  
Soft Jaw Material: ALUMINUM-6061-T6 Bar Stock, STEEL-1018, "B" JAWS-7075-T6 Aircraft Aluminum  
For complete list of applicable chucks, see pages 632-644 \* denotes non-stock item. Please allow 1 week manufacturing time.

## JAW NUTS & SCREWS

Chuck Make & Model	Chuck Size	Critical Dimensions						2 Screws Included With Each Jaw Nut					
		Heel Height H	Groove Width G	Screw Size Pitch & Length E	Hole Space D	Hght Inch A	Width Inch C	Length Inch B	Jaw Nut Part Number	Price Each	Screw Part Number	Price Each	
-	15	0.649	0.864 (22mm)	M20-2.50x55mm	1.690 (43mm)	1.790	1.318	3.149	KT-150JN	\$43.46	M2025055	\$3.00	
-	15	0.649	0.864 (22mm)	M20-2.50x55mm	2.360 (60mm)	1.798	1.320	3.820	KT-152JN	\$42.70	M2025055	\$3.00	
Kitagawa: B-215	15	0.758	1.003 (25.5mm)	M20-2.50x50mm	1.690 (43mm)	1.550	1.375	3.149	KT-151JN	\$43.46	M2025050	\$3.00	
Kitagawa: B-15, BT-15, B-18, HOB-15	15	0.636	0.861	M20-2.50x50mm	1.690 (43mm)	1.779	1.317	3.149	KT-153JN	\$41.98	M2025050	\$3.00	
-	15/18	0.730	1.003 (25.5mm)	M20-2.50x50mm	T-Nut	1.540	1.378	1.654	KT-180JN	\$43.46	M2025050	\$3.00	
UVE-800LB	24	0.414	0.985	M20-2.50x50mm	3.152	1.241	1.418	4.728	KT-241JN	\$59.52	M2025050	\$3.00	
HJ-24, HJA11-24	24	0.748	0.985	M20-2.50x50mm	3.152	2.127	1.576	4.728	KT-242JN	\$59.52	M2025050	\$3.00	

Call Us Or Visit Our Website For Our Complete Selection!

2010-11 Master Catalog

31