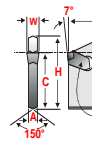
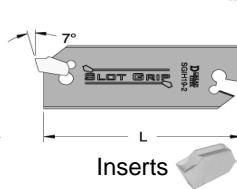
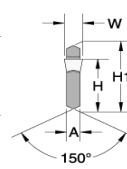
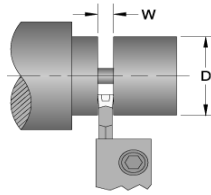


PART-OFF INSERTS & BLADES

CUT-OFF (PART-OFF) BLADES

Dorian and Newcomer Blades and Inserts are completely interchangeable with **Iscar** -GTN. NS is the original Iscar design of blades, PS is the newer Iscar design. Inserts are also interchangeable.



CHUCK JAWS
LATHE WORKHOLDING

MACHINE VISES
MAGNETIC CHUCKS

RETENTION KNOBS
ER, DA, TG COLLETS

TOOLHOLDERS
TAP HOLDERS

INDEXABLE DRILLS
TURNING & BORING

ENDMILLS, DRILLS
TAPS & REAMERS

ABRASIVES
MEASURING TOOLS

MRO & SAFETY
FLAT STOCK/DRILL ROD

Industry Standard Number	Dorian			Newcomer			Neutral Stop Blade Part Number	Max Work Dia	Price each	Insert Reference Number	W Inches	W mm	A	L	H	H1
	Positive Stop Blade Part Number	Max work Dia	Price each	Positive Stop Blade Part Number	Max Work Dia	Price each										
GIH19-2	DN62950	1.57"	\$57.73	NGIH-19-2-PS	1.5	\$50.49	NGIH-19-2-NS	1-1/2"	\$37.07	GT(N/R/L)-2	0.087	2	0.063	3.38	0.618	0.75
GIH26-2	DN62951	2.0"	\$68.76	NGIH-26-2-PS	3"	\$50.49	NGIH-26-2-NS	2"	\$42.47	GT(N/R/L)-2	0.087	2	0.063	4.33	0.842	1.02
GIH26-3	DN62952	3.0"	\$68.76	NGIH-26-3-PS	3"	\$50.49	NGIH-26-3-NS	3"	\$42.47	GT(N/R/L)-3	0.122	3	0.094	4.33	0.842	1.02
GIH26-4	DN62953	3.15"	\$68.76	NGIH-26-4-PS	3"	\$52.55	NGIH-26-4-NS	3"	\$44.54	GT(N/R/L)-4	0.161	4	0.125	4.33	0.842	1.02
GIH26-5	DN62954	3.15"	\$68.76	NGIH-26-5-PS	3"	\$56.67	NGIH-26-5-NS	4"	\$47.90	GT(N/R/L)-5	0.201	5	0.156	4.33	0.842	1.02
GIH26-6	DN62955	3.15"	\$68.76	NGIH-26-6-PS	3"	\$58.72	NGIH-26-6-NS	4"	\$47.90	GT(N/R/L)-6	0.252	6	0.203	4.33	0.842	1.02
GIH32-3	DN62956	3.94"	\$79.54	NGIH-32-3-PS	4"	\$52.55	NGIH-32-3-NS	4"	\$44.49	GT(N/R/L)-3	0.122	3	0.094	5.9	0.984	1.25
GIH32-4	DN62957	3.94"	\$79.54	NGIH-32-4-PS	4"	\$54.61	NGIH-32-4-NS	4"	\$45.55	GT(N/R/L)-4	0.161	4	0.125	5.9	0.984	1.25
GIH32-5	DN62958	4.71"	\$79.54	NGIH-32-5-PS	5"	\$58.72	NGIH-32-5-NS	5"	\$50.84	GT(N/R/L)-5	0.201	5	0.156	5.9	0.984	1.25
GIH32-6	DN62959	4.72"	\$79.54	NGIH-32-6-PS	5"	\$60.79	NGIH-32-6-NS	5"	\$51.96	GT(N/R/L)-6	0.252	6	0.203	5.9	0.984	1.25
GIH32-8	DN62960	5.51"	\$117.86	NGIH-32-8-PS	5"	\$71.73	NGIH-32-8-NS	5"	\$48.26	GT(N/R/L)-8	0.315	8	0.268	5.9	0.984	1.25
GIH32-9	DN62961	5.51"	\$117.86	NGIH-32-9-PS	5"	\$82.37	NGIH-32-9-NS	6"	\$72.08	GT(N/R/L)-9	0.378	9	0.312	5.9	0.984	1.25

CUT-OFF INSERTS

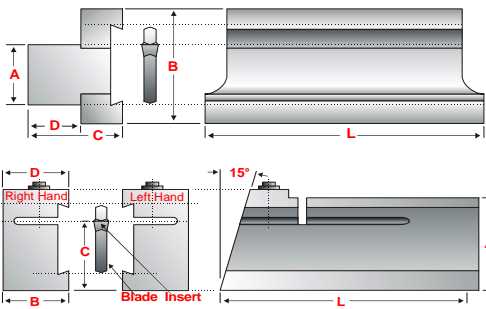
Insert Ref#	Insert Size	W width ±.004"	W width mm.	L Lead Angle	Newcomer Inserts				Dorian Tools Inserts							
					UnCoated C2	Price each	UnCoated C5	Price each	Coated C5	Price each	Uncoated C2	Price each	Uncoated C5	Price each	Coated C5-C6	Price each
_GTN-2	2	0.087	2mm	0°	CI-201	\$5.35	CI-301	\$5.89	CI-401	\$7.63	DN82220	\$7.03	DN82221	\$7.03	DN82222	\$9.59
_GTR-2-8	2	0.087	2mm	8°	CI-204	\$6.16	CI-304	\$6.79	CI-404	\$8.40	DN82248	\$7.03	DN82249	\$7.03	DN82250	\$9.59
_GTL-2-8	2	0.087	2mm	8°	CI-205	\$6.16	CI-305	\$6.79	CI-405	\$8.40	DN82276	\$7.03	DN82277	\$7.03	DN82278	\$9.59
_GTN-2.4	2	0.093	2mm	0°	CI-208	\$5.35	CI-308	\$5.89	CI-408	\$7.63	-	-	-	-	-	-
_GTR-2.4-8	2	0.093	2mm	8°	CI-211	\$6.16	CI-311	\$6.79	CI-411	\$8.40	-	-	-	-	-	-
_GTL-2.4-8	2	0.093	2mm	8°	CI-212	\$6.16	CI-312	\$6.79	CI-412	\$8.40	-	-	-	-	-	-
_GTN-3	3	0.12	3mm	0°	CI-215	\$5.35	CI-315	\$5.89	CI-415	\$7.63	DN82224	\$7.03	DN82225	\$7.03	DN82226	\$9.59
_GTR-3-8	3	0.12	3mm	8°	CI-218	\$6.16	CI-318	\$6.79	CI-418	\$8.40	DN82252	\$7.03	DN82253	\$7.03	DN82254	\$9.59
_GTL-3-8	3	0.12	3mm	8°	CI-219	\$6.16	CI-319	\$6.79	CI-419	\$8.40	DN82280	\$7.03	DN82281	\$7.03	DN82282	\$9.59
_GTN-4	4	0.16	4mm	0°	CI-222	\$6.39	CI-322	\$7.05	CI-422	\$8.66	DN82228	\$7.74	DN82229	\$7.74	DN82230	\$9.90
_GTR-4-8	4	0.16	4mm	8°	CI-225	\$7.16	CI-325	\$7.89	CI-425	\$9.61	DN82256	\$7.74	DN82257	\$7.74	DN82258	\$9.90
_GTL-4-8	4	0.16	4mm	8°	CI-226	\$7.16	CI-326	\$7.89	CI-426	\$9.61	DN82284	\$7.74	DN82285	\$7.74	DN82286	\$9.90
_GTN-4.8	4	0.187	4mm	0°	CI-229	\$7.12	CI-329	\$7.84	CI-429	\$9.17	-	-	-	-	-	-
_GTR-4.8-8	4	0.187	4mm	8°	CI-232	\$7.82	CI-332	\$8.61	CI-432	\$9.99	-	-	-	-	-	-
_GTL-4.8-8	4	0.187	4mm	8°	CI-233	\$7.82	CI-333	\$8.61	CI-433	\$9.99	-	-	-	-	-	-
_GTN-5	5	0.2	5mm	0°	CI-238	\$7.82	CI-338	\$7.84	CI-438	\$9.17	DN82232	\$8.47	DN82233	\$8.47	DN82234	\$9.91
_GTR-5-8	5	0.2	5mm	8°	CI-239	\$7.82	CI-339	\$8.61	CI-439	\$9.99	DN82260	\$8.47	DN82261	\$8.47	DN82262	\$9.91
_GTL-5-8	5	0.2	5mm	8°	CI-240	\$7.82	CI-340	\$8.61	CI-440	\$9.99	DN82288	\$8.47	DN82289	\$8.47	DN82290	\$9.91
_GTN-6	6	0.25	6mm	0°	CI-243	\$8.16	CI-343	\$8.99	CI-443	\$10.57	DN82236	\$9.34	DN82237	\$9.34	DN82238	\$12.54
_GTR-6-8	6	0.25	6mm	8°	CI-246	\$8.91	CI-346	\$9.82	CI-446	\$11.39	DN82264	\$9.34	DN82265	\$9.34	DN82266	\$12.54
_GTL-6-8	6	0.25	6mm	8°	CI-247	\$8.91	CI-347	\$9.82	CI-447	\$11.39	DN82292	\$9.34	DN82293	\$9.34	DN82294	\$12.54
_GTN-8	8	0.315	8mm	0°	CI-250	\$11.66	CI-350	\$12.83	CI-450	\$14.82	DN82240	\$14.67	DN82241	\$14.67	DN82242	\$18.57
_GTR-8-4	8	0.315	8mm	4°	CI-251	\$12.46	CI-351	\$13.72	CI-451	\$15.65	DN82268	\$14.67	DN82269	\$14.67	DN82270	\$18.57
_GTL-8-4	8	0.315	8mm	4°	CI-252	\$12.46	CI-352	\$13.72	CI-452	\$15.65	DN82296	\$14.67	DN82297	\$14.67	DN82298	\$18.57
_GTN-9	9	0.375	9mm	0°	CI-257	\$15.24	CI-357	\$16.78	CI-457	\$19.06	DN82244	\$16.68	DN82245	\$16.68	DN82246	\$19.24
_GTR-9-4	9	0.375	9mm	4°	CI-258	\$16.03	CI-358	\$17.68	CI-458	\$19.92	DN82272	\$16.68	DN82273	\$16.68	DN82274	\$19.24
_GTL-9-4	9	0.375	9mm	4°	CI-259	\$16.03	CI-359	\$17.63	CI-459	\$19.92	DN82300	\$16.68	DN82301	\$16.68	DN82302	\$19.24

Call Us Today For All Of Your Machine Tool Needs!



TOOL BLOCKS

Toolblocks are compatible with Newcomer or Dorian Blades



NGTBN

A	B	C	D	L	Use Blade	Part Number	Price Each
5/8"	1-3/16"	1-1/64"	5/8"	3-7/16"	_GIH 19-2	NGTBN-16-2	\$80.32
5/8"	1-1/2"	1-5/16"	5/8"	3-7/16"	_GIH 26-2,3,4,5,6	NGTBN-16-5	\$82.37
3/4"	1-1/2"	1-7/16"	3/4"	3-7/16"	_GIH 26-2,3,4,5,6	NGTBN-19-5	\$84.38
1"	1-7/8"	1-15/32"	25/32"	4-5/16"	_GIH 32-3,4,5,6	NGTBN-25-6	\$88.50
1-1/4"	1-7/8"	1-13/16"	1-1/8"	4-5/16"	_GIH 32-3,4,5,6,R/L-9	NGTBN-32-6	\$91.60
1-1/2"	1-7/8"	2-27/64"	1-5/8"	4-5/16"	_GIH 32-9	NGTBN-38-6	140.04

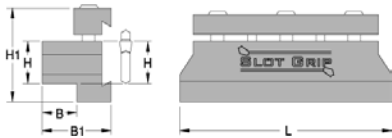
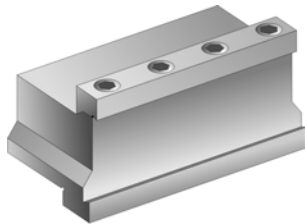
NGTBR/L

A	B	C	D	L	Use Blade	Right or Left	Part Number	Price Each
1"	3/4"	3/4"	43/64"	3-7/16"	_GIH 19-2	Right Left	NGTBR-19-2 NGTBL-19-2	\$56.02 \$56.02
1-1/4"	25/32"	1"	19/32"	4-3/4"	_GIH 26-2,3,4,5,6	Right Left	NGTBR-25-6 NGTBL-25-6	\$66.55 \$66.55

TOOL BLOCKS



Toolblocks Are Compatible With Newcomer Or Dorian Blades



Description	H	H1	B	B1	L	Part Number	Price	Blade Used	Screw Used
INCH									
SGTBN12,7-2	0.5	1.375	0.5	1	3	DN62970	\$137.21	_GIH19-2	A40467 10-24 x 1.0
SGTBN16-2	0.625	1.375	0.625	1	3	DN62971	\$137.21		
SGTBN16-5	0.625	1.75	0.625	1.25	3.5	DN62972	\$137.21	_GIH26-2 Thru SGIH26-6	A40468 1/4-20 x 1-1/4
SGTBN19-5	0.75	2	0.75	1.375	3.5	DN62973	\$144.59		
SGTBN19-6	0.75	2	0.75	1.375	4.5	DN62974	\$144.59	_GIH32-3 Thru SGIH32-9	A40469 1/4-20 x 1-1/2
SGTBN25,4-6	1	2.125	0.875	1.5	4.5	DN62975	\$148.97		
SGTBN31,8-6	1.25	2.375	1.125	1.75	4.5	DN62976	\$153.00	_GIH32-3 Thru SGIH32-9	A40469 1/4-20 x 1-1/2
SGTBN38,1-6	1.5	2.875	1.625	2.25	4.5	DN62977	\$205.25		
METRIC									
SGTBN12-2	12,0	34,9	12,7	25,4	76,20	DN62978	\$137.21	_GIH32-3 Thru SGIH32-9	A40469 1/4-20 x 1-1/2
SGTBN16-2	16,0	34,9	15,9	25,4	76,20	DN62971	\$137.21		
SGTBN16-5	16,0	44,5	15,9	31,8	88,90	DN62972	\$137.21	_GIH26-2 Thru SGIH26-6	A40468 1/4-20 x 1-1/4
SGTBN20-5	20,0	50,8	19,1	34,9	88,90	DN62979	\$144.59		
SGTBN20-6	20,0	50,8	19,1	34,9	114,3	DN62980	\$144.59	_GIH32-3 Thru SGIH32-9	A40469 1/4-20 x 1-1/2
SGTBN25-6	25,0	54,0	22,2	38,1	114,3	DN62981	\$148.97		
SGTBN32-6	32,0	60,3	28,6	44,5	114,3	DN62982	\$153.00	_GIH32-3 Thru SGIH32-9	A40469 1/4-20 x 1-1/2
SGTBN40-6	40,0	73,0	41,3	57,2	114,3	DN62983	\$205.25		

NEUTRAL TOOLHOLDER SET Cut-Off and Grooving



Dorian Slot Grip Blades hold inserts securely by a tapered locking system. The blade and insert geometry permits free chip flow, minimizing insert breakage due to chip build-up. The toolholder features a two piece clamp style, providing for precise and rigid blade locking and easy mounting into CNC turrets. Inserts feature a controlled, coiled chip flow and higher material removal rates.



Set Includes Blade, Block & 10 Inserts!



Description	Part Number	Price Per Set
10 SGTN-3TIN Inserts, 1 SGIH26-3 Blade, 1 SGTBN 19-5 Block	DN85326	\$386.48
10 SGTN-3TIN Inserts, 1 SGIH32-3 Blade, 1 SGTBN 25,4-6 Block	DN85330	\$405.44

CUT-OFF TOOL KITS

Each kit consists of a tool block, a blade and either 10 N52 or PV52 carbide inserts. A New-Grip wrench is also included for removing inserts from the blade and an Allen wrench for positioning and removing the blade from the block.

- #2 New-Grip Starter Kit**
- 1 ea NGTBN-16-5 (5/8") Block
 - 1 ea NGIH-26-2 Blade
 - 10 ea NGTN-2-N52 Inserts
 - 1ea New-Grip Wrench
 - 1 ea Allen Wrench

Part # NEW-KIT2
\$172.12

- #3 New-Grip Starter Kit**
- 1 ea NGTBN-19-5 (3/4") Block
 - 1 ea NGIH-26-3 Blade
 - 10 ea NGTN-2-N52 Inserts
 - 1ea New-Grip Wrench
 - 1 ea Allen Wrench

Part # NEW-KIT3
\$167.45

- #4 New-Grip Starter Kit**
- 1 ea NGTBN-16-5 (5/8") Block
 - 1 ea NGIH-26-3 PS Blade
 - 10 ea NGTN-3-PV52 Inserts
 - 1ea New-Grip Wrench
 - 1 ea Allen Wrench

Part # NEW-KIT4
\$187.23

- #5 New-Grip Starter Kit**
- 1 ea NGTBN-25-6 (1") Block
 - 1 ea NGIH-32-3 PS Blade
 - 10 ea NGTN-3-PV52 Inserts
 - 1ea New-Grip Wrench
 - 1 ea Allen Wrench

Part # NEW-KIT5
\$182.38



- #6 New-Grip Starter Kit**
- 1 ea NGTBN-19-6 (3/4") Block
 - 1 ea NGIH-32-3 PS Blade
 - 10 ea NGTN-3-PV52 Inserts
 - 1ea New-Grip Wrench
 - 1 ea Allen Wrench

Part # NEW-KIT6
\$179.11

Call Us Or Visit Our Website For Our Complete Selection!

LATHES CHUCKS
LIVE CENTERS
VISE ACCESSORIES
VISE JAWS
STRAIGHT SHANK COLLET HOLDERS
LATHES BUSHINGS
DRILL CHUCKS
CARBIDE INSERTS
THREADING/GROOVING
CUTTING TOOLS
MACHINERY
PRECISION TOOLS
DEBURRING
COOLANT/FILDS
TOOL STORAGE

CUT-OFF BLADES/CHAMFER MILLS

CARBIDE TIPPED CUT-OFF BLADES

- Double ended for double performance
- Hardened and precision ground steel blades
- Tips are hollow ground all over for longer tool life
- "T" styled over entire blade length to fit all "T" type holders
- Also available with V-groove



MICRO 100

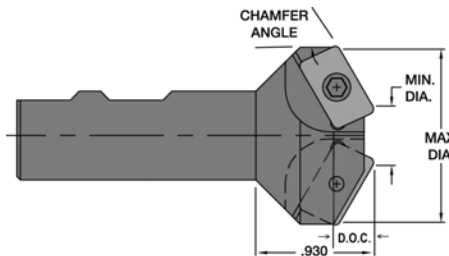
NEW ITEM!

Width	Height	OAL	Standard		With V-Groove	
			Part Number	Price Each	Part Number	Price Each
1/16"	1/2"	4-1/2"	MI-T100	\$41.25	MI-T100V	\$47.30
5/64"			MI-T101	\$41.25	MI-T101V	\$47.30
3/32"			MI-T102	\$39.70	MI-T102V	\$45.40
1/8"			MI-T103	\$39.70	MI-T103V	\$45.40
3/32"	11/16"	5"	MI-T104	\$44.30	MI-T104V	\$50.05
1/8"			MI-T105			
5/32"			MI-T106			
3/16"			MI-T107			
1/8"	3/4"	5"	MI-T108	\$46.10	MI-T108V	\$51.95
5/32"			MI-T109			
3/16"			MI-T110			
1/8"	7/8"	6"	MI-T111	\$47.95	MI-T111V	\$53.75
5/32"			MI-T112			
3/16"			MI-T113			
1/8"	1-1/8"	6"	MI-T115	\$54.70	MI-T115V	\$60.45
3/16"			MI-T116			

INDEXABLE CHAMFER MILLS

- Can be used for countersinking, ID chamfering and facing, as well as exterior chamfering
- Features Weldon shank
- Metric sizes also available
- 16mm parallelogram insert provides for extra length of cut
- All holders use same insert (Insert sold separately)

MADE IN THE USA



NEW ITEM!

Min Dia	Max. Dia.	Weldon Shank	Chamfer Angle	Included Angle	No. of Flutes	Depth of Cut	Chamfer Mill Part Number	Price Each	Insert For Steels/ Stainless	Inserts For Aluminum	Screw	Torx Wrench
0.750	1.303	3/4	30°	60°	2	0.479	CHM-750-30-ET	\$84.60	APKT1604PDTR-LA \$8.83 EACH	APGT1604ALU-LA \$9.56 EACH	19043 \$2.50 ea	19555 \$4.25 ea
0.688	1.414	3/4	41°	82°	2	0.418	CHM-688-41-ET	\$84.60				
0.688	1.471	3/4	45°	90°	2	0.391	CHM-688-45-ET	\$84.60				
0.500	1.458	3/4	60°	120°	2	0.277	CHM-500-60-ET	\$84.60				
1.000	1.553	1	30°	60°	3	0.479	CHM1000-30-ET	\$92.70				
0.938	1.664	1	41°	82°	3	0.418	CHM-938-41-ET	\$92.70				
0.938	1.721	1	45°	90°	3	0.391	CHM-938-45-ET	\$92.70				
0.750	1.708	1	60°	120°	3	0.277	CHM-750-60-ET	\$92.70				
1.250	1.803	1-1/4	30°	60°	3	0.479	CHM-1250-30-ET	\$113.40				
1.188	1.914	1-1/4	41°	82°	3	0.418	CHM-1188-41-ET	\$113.40				
1.188	1.971	1-1/4	45°	90°	3	0.391	CHM-1188-45-ET	\$113.40				
1.000	1.958	1-1/4	60°	120°	3	0.277	CHM-1000-60-ET	\$113.40				
1.500	2.053	1-1/2	30°	60°	3	0.479	CHM-1500-30-ET	\$145.80				
1.438	2.164	1-1/2	41°	82°	3	0.418	CHM-1438-41-ET	\$145.80				
1.428	2.221	1-1/2	45°	90°	3	0.391	CHM-1438-45-ET	\$145.80				
1.250	2.208	1-1/2	60°	120°	3	0.277	CHM-1250-60-ET	\$145.80				

INDEXABLE COUNTERSINK & CHAMFERING TOOL SET

BEST VALUE

- Deburr and countersink large diameter holes.
- Positive rake offers smooth, chatterless cutting.
- Carbide indexable-no need to resharpen tool.



Description	Part Number	Price Each
60° Set	CSK-620	\$65.00
82° Set	CSK-800	\$65.00
90° Set	CSK-900	\$65.00

3 piece set includes:
 1/4" (min.) x 3/4" (max.) x 1/2" (shank)
 1/2" (min.) x 1 3/4" (max.) x 1/2" (shank)
 1 1/4" (min.) x 2 1/2" (max.) x 3/4" (shank)

Carbide Inserts

Radius (In.)	Inscribed Circle (In.)	Thick (In.)	Coating	Part Number	Price Each
1/64	3/8	1/8	C5	MICH-TPGH-321	\$5.70
3/64	1/2	3/16	C2	MICH-SPGH-433	\$9.23

FLYCUTTER HEADS



- Vibra-core design with 1/2 tool bit capacity
- Uses larger 1/2 and 3/8 tool bits for larger cuts
- Larger 1/4- 20 set screws
- Heat treated and balanced
- Sizes available: 1-1/2", 2" and 2-1/2" diameter

Size	Part Number	Price
1-1/2"	SIE-FC-1.5	\$32.97
2"	SIE-FC-2.0	\$37.05
2-1/2"	SIE-FC-2.5	\$40.06
Set	SIE-FC-3S	\$98.36

Call Us Today For All Of Your Machine Tool Needs!