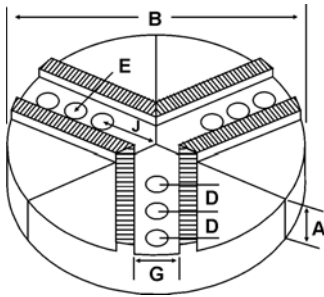
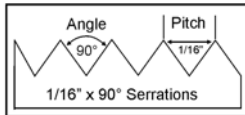
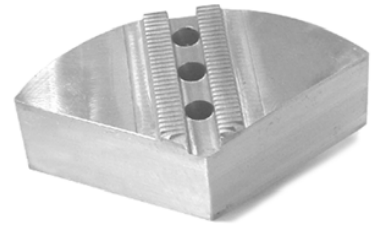


ROUND JAWS- 1/16" x 90° Serrations

FOR USE ON: **SMW Autoblok, Rohm, Pratt Burnerd & Other Chucks**



- Round Jaws allow for complete gripping of workpiece
- Oversized jaws available
- Ideal for thin-walled or irregular shaped workpieces.
- Can be machined to fit workpiece
- Max. length of serrations: 5.75"
- Special "J" dimensions available
- Available in Aluminum, Cast Iron & Steel
- **Made in the USA**



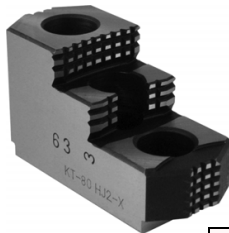
Group
11



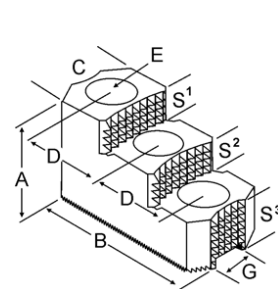
Group No.	Chuck Size	Critical Dimensions				ALUMINUM					CAST IRON		STEEL		
		Groove Width G	Screw Size E	Hole Space D	Holeto Front J	Pie Dia B	Height Inch A	No. of Holes	Industry Ref #	Part Number	Price Set of 3	Part Number	Price Set of 3	Part Number	Price Set of 3
I1-43-62	5	0.433 (11mm)	5/16	0.625 (16mm)	0.875	6	2.00	3	-	6-RPH-5256A	\$60.51	-	-	6-RPH-5256S	\$154.20
I1-43-71	5-6	0.433 (11mm)	5/16	0.718 (18mm)	1.150	6	2.00	3	-	RPH-6200A	\$68.29	RPH-6200CI	\$89.60	RPH-6200S	\$161.92
1.150					6	3.00	3	-	RPH-6300A	\$94.14	-	-	-	-	
1.150					6	4.00	3	-	RPH-6400A	\$101.76	-	-	RPH-6400S	\$250.24	
I1-47-59	5-6	0.473 (12mm)	5/16	0.591 (15mm)	0.900	6	2.00	2	-	6-RPH-5200A	\$60.95	-	-	6-RPH-5200S	\$161.92
I1-55-71	5-6	0.551 (14mm)	3/8	0.710 (18mm)	1.050	6	2.00	3	-	RPH-6205A	\$68.29	RPH-6205CI	\$89.60	RPH-6205S	\$161.92
1.050					6	4.00	3	-	RPH-6405A	\$101.76	-	-	RPH-6405S	\$250.24	
1.650					8	2.00	3	-	8-RPH-6201A	\$101.48	8-RPH-6201CI	\$95.40	8-RPH-6201S	\$224.30	
I1-55-87	5-10	0.551 (14mm)	3/8	0.875 (22mm)	1.650	8	2.00	3	-	8-RPH-6401A	\$145.57	-	-	8-RPH-6401S	\$382.71
1.650					8	4.00	3	-	RPH-10205A	\$134.96	RPH-10205CI	\$172.80	RPH-10205S	\$338.55	
1.913					10	2.00	3	-	RPH-10405A	\$200.30	RPH-10405CI	\$307.19	-	-	
1.913					10	4.00	3	-	RSM-6200A	\$69.10	RSM-6200CI	\$89.60	RSM-6200S	\$161.92	
I1-55-98	5-6	0.551 (14mm)	3/8	0.984 (25mm)	1.420	6	2.00	2	-	RSM-6400A	\$108.34	-	-	RSM-6400S	\$250.24
1.420					6	4.00	2	-	RPH-8200A	\$101.48	RPH-8200CI	\$115.20	RPH-8200S	\$235.52	
I1-66-87	8	0.669 (17mm)	1/2	0.875 (22mm)	1.650	8	2.00	3	-	RPH-8400A	\$145.57	-	-	RPH-8400S	\$382.71
8					4.00	3	-	RPH-8201A	\$103.98	RPH-8201CI	\$115.20	RPH-8201S	\$235.52		
8					4.00	2	-	RPH-8401A	\$145.57	-	-	RPH-8401S	\$382.71		
I1-66-100	8	0.669 (17mm)	1/2	1.000 (25.5mm)	2.250	8	2.00	2	-	10-RPH-8201A	\$136.45	-	-	-	-
8						4.00	2	-	12-RPH-8201A	\$241.64	-	-	-	-	
10						2.00	2	-	RSM-8200A	\$103.98	RSM-8200CI	\$115.20	RSM-8200S	\$235.52	
12						2.00	2	-	RSM-8400A	\$145.57	-	-	RSM-8400S	\$382.71	
I1-66-112	8	0.669 (17mm)	1/2	1.125 (28.5mm)	1.125	8	2.00	3	SMW8P	RSM-8200A	\$103.98	RSM-8200CI	\$115.20	RSM-8200S	\$235.52
8						4.00	3	SMW8P1	RSM-8400A	\$145.57	-	-	RSM-8400S	\$382.71	

Round Jaw Material: ALUMINUM-6061-T6 Bar Stock, CAST IRON-Gray, STEEL-1018. 18" & Larger- Aluminum Casting T6
For complete list of applicable chucks, see pages 632-644.
* denotes non-stock item. Please allow 1 week manufacturing time.

HARD JAWS-2 STEP 1/16" x 90° SERRATIONS



- FEATURES:**
- Designed for first operation roughing, expect standard runout between 0.005-0.010
 - Reversible-suitable for OD & ID workholding.
 - **XTRA BITE** -very aggressive bite. Has conical teeth for extra gripping power and ground body to provide improved runout.



Group Number	Chuck Size	Critical Dimensions				Width Inch C	OAL Inch B	Height Inch A	No. of Holes	No. of Steps	Top Step Ht S1	Mid Step Ht S2	Bot Step Ht S3	Part Number	Price Per Set
		Groove Width G	Screw Size E	Hole Space D	Hole Space D										
I1-43-71	6	0.433 (11mm)	5/16	0.719 (18.5mm)	1.250	3.000	2.000	3	2	0.500	0.500	1.000	PH-60HJ2-X	\$395.83	
I1-55-87	6	0.551 (14mm)	3/8	0.875 (22mm)	1.250	3.000	2.000	3	2	0.375	0.375	1.250	PH-61HJ2-X	\$395.83	
I1-66-94	8	0.669 (17mm)	1/2	0.945 (24mm)	1.500	3.500	1.969	3	2	0.530	0.530	0.909	PH-80HJ2-X	\$427.50	

Call Us Today For All Of Your Machine Tool Needs!

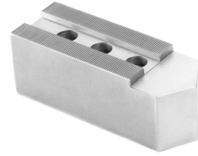
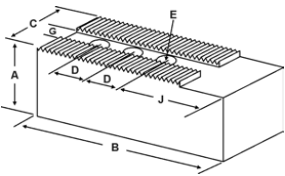
2010-11 Master Catalog

SOFT JAWS- 1/16" x 90° Serrations

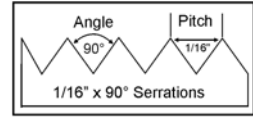
C

LATHE CHUCKS
LIVE CENTERS

FOR USE ON: **SMW Autoblok, Rohm, Pratt Burnerd & Other Chucks**



QUANTITY DISCOUNTS!
Order **5 SETS OR MORE** of the same part number soft jaw and receive a **5% DISCOUNT!**



WISE JAWS
WISE ACCESSORIES

STRAIGHT SHANK
COLLET HOLDERS

LATHE BUSHINGS
DRILL CHUCKS

CARBIDE INSERTS
THREADING/GROOVING

CUTTING TOOLS
MACHINERY

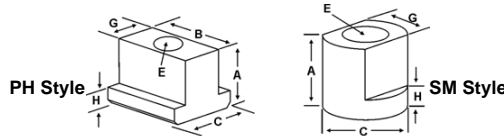
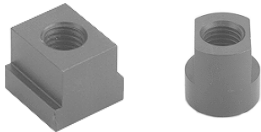
PRECISION TOOLS
DEBURRING

COOLANT/FLUIDS
TOOL STORAGE

Group No.	Chuck Size	Critical Dimensions				ALUMINUM					STEEL							
		Groove Width G	Screw Size E	Hole Space D	Hole to Front J	Width Inch C	Length Inch B	Hght Inch A	No. of Holes	FLAT END Part Number	Price Set Of 3	FLAT END Part Number	Price Set Of 3					
I1-43-62	5	0.433 (11mm)	5/16	0.625 (16mm)	0.875	1.00	2.500	1.50	3	PH-5156AF	\$32.71	PH-5156F	\$35.22					
													2.00	3	PH-5256AF	\$38.08	PH-5256F	\$40.94
I1-43-71	5 - 6	0.433 (11mm)	5/16	0.718 (18mm)	1.250	1.25	3.125	1.50	3	PH-6150AF	\$35.67	PH-6150F	\$36.46					
													2.00	3	PH-6200AF	\$44.26	PH-6200F	\$47.46
													2.50	3	PH-6250AF	\$45.82	PH-6250F	\$48.99
													3.00	3	PH-6300AF	\$54.60	PH-6300F	\$46.26
I1-47-59	5 - 6	0.473 (12mm)	5/16	0.591 (15mm)	0.900	1.00	2.500	1.50	3	PH-5150AF	\$32.71	PH-5150F	\$35.22					
I1-47-63	5 - 6	0.472	8mm	0.630	0.900	1.00	2.500	1.00	3	PH-5100AF	\$32.71	PH-5100F	\$35.22					
													1.25	2.500	2.00	3	PH-5200AF	\$44.26
I1-55-71	5 - 6	0.551 (14mm)	3/8	0.710 (18mm)	1.150	1.25	3.000	1.50	3	PH-6155AF	\$34.29	PH-6155F	\$36.81					
													3.00	3	PH-6305AF	\$44.17	PH-6305F	\$47.12
I1-55-78	5-6	0.551 (14mm)	3/8	0.787	1.625	1.25	3.000	2.00	3	HA-6200AF	\$44.25	HA-6200F	\$44.28					
													3.00	3	HA-6300AF	\$50.12	HA-6300F	\$46.26
													4.00	3	HA-6400AF	\$89.22	HA-6400F	\$94.90
													1.50	3	PH-6151AF	\$41.37	PH-6151F	\$44.16
I1-55-87	5 - 10	0.551 (14mm)	3/8	0.875 (22mm)	2.125	1.50	4.375	2.00	3	PH-6201AF	\$48.85	PH-6201F	\$52.06					
													2.50	3	PH-6251AF	\$47.82	PH-6251F	\$54.46
													3.00	3	PH-6301AF	\$64.83	PH-6301F	\$68.90
													4.00	3	PH-6401AF	\$89.23	PH-6401F	\$94.91
									2.325	1.75	4.750	2.00	3	PH-10205AF	\$57.56	PH-10205F	\$46.26	
										4.00	3	PH-10405AF	\$79.83	PH-10405F	\$65.90			
									3.575	2.00	6.000	3.00	3	PH-10306AF	\$83.81	PH-10306F	\$88.32	
												4.00	3	PH-10406AF	\$100.89	PH-10406F	\$106.00	
I1-55-98	5 - 6	0.551 (14mm)	3/8	0.984 (25mm)	1.650	1.25	3.250	1.50	2	SM-6150AF	\$34.33	SM-6150F	\$36.81					
													3.00	2	SM-6300AF	\$67.99	SM-6300F	\$47.12
I1-59-81	6	0.590	10mm	0.810	0.750	1.00	2.000	2.00	2	PB-6200AF	\$44.21	PB-6200F	\$38.96					
I1-66-87	5 - 10	0.669 (17mm)	3/8	0.875 (22mm)	1.550	1.25	3.250	2.00	2	PH-6203AF	\$48.52	PH-6203F	\$52.06					
													2.00	3	PH-8200AF	\$47.93	PH-8200F	\$51.04
SMW Autoblok BB-D 210, BH-D 210	8	0.669 (17mm)	1/2	0.875 (22mm)	2.125	1.50	4.375	3.00	3	PH-8300AF	\$64.83	PH-8300F	\$68.90					
													4.00	3	PH-8400AF	\$62.81	PH-8400F	\$66.25
													2.00	3	PH-8201AF*	\$48.86	PH-8201F*	\$52.06
I1-66-100	8	0.669 (17mm)	1/2	1.000 (25.5mm)	1.725	1.50	4.375	3.00	3	PH-8301AF*	\$64.83	PH-8301F*	\$68.90					
													4.00	3	PH-8401AF*	\$74.95	PH-8401F*	\$81.32
													2.00	2	SM-8200AF*	\$46.83	SM-8200F*	\$50.05
PBA 9821-2110	8	0.669 (17mm)	1/2	1.125 (28.5mm)	1.750	1.50	3.500	3.00	2	SM-8300AF*	\$69.58	SM-8300F*	\$74.35					
													5.00	2	SM-8500AF*	\$148.60	SM-8500F*	\$161.22
													2.00	2	PB-6201AF	\$48.31	PB-6201F	\$48.54
I1-66-112	8	0.669 (17mm)	1/2	1.125 (28.5mm)	1.750	1.50	3.500	2.00	2	SM-8200AF*	\$46.83	SM-8200F*	\$50.05					
													3.00	2	SM-8300AF*	\$69.58	SM-8300F*	\$74.35
													5.00	2	SM-8500AF*	\$148.60	SM-8500F*	\$161.22
I1-71-83	8	0.710	12mm	0.830	0.840	1.75	3.000	2.00	2	PB-6201AF	\$48.31	PB-6201F	\$48.54					

For "Pointed" Soft Jaws, please substitute "P" for "F" in the part number. Example: PH-5156AF will be PH-5156AP. For Pointed Jaws Add \$3.25.
Soft Jaw Material: ALUMINUM-6061-T6 Bar Stock, STEEL-1018, "B" JAWS-7075-T6 Aircraft Aluminum
For complete list of applicable chucks, see pages 632-644. * denotes non-stock item. Please allow 1 week manufacturing time.

TEE NUTS & SCREWS



Chuck Size	SMW Autoblok	Critical Dimensions						1 Free Screw Included With Each Jaw Nut			
		Heel Height H	Groove Width G	Screw Size E	Hght Inch A	Width Inch C	Length Inch B	TeeNut Part Number	Price Each	Screw Part Number	Price Each
5	-	0.250	0.433	5/16"-18 x 1.00"	0.590	0.530	0.620	PH-56TN	\$16.82	S5/1618100	\$2.00
5 - 6	HF-KS 13032	0.235	0.433	5/16"-18 x 1.25"	0.780	0.685	0.750	PH-60TN	\$16.82	S5/1618125	\$2.00
5 - 10	-	0.250	0.550	3/8"-16 x 1.00"	0.605	0.750	0.750	PH-61TN	\$16.82	S3/816100	\$2.00
5 - 6	-	0.370	0.550	3/8"-16 x 1.50"	1.040	0.790	0.790	SM-65TN	\$19.63	S3/816150	\$2.00
8	-	0.370	0.668	1/2"-13 x 1.50"	1.080	1.080	0.910	SM-80TN	\$19.63	S1/213150	\$2.00

Call Us Or Visit Our Website For Our Complete Selection!

2010-11 Master Catalog