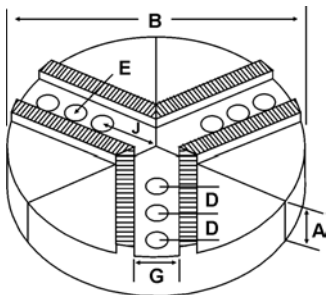
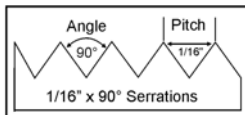
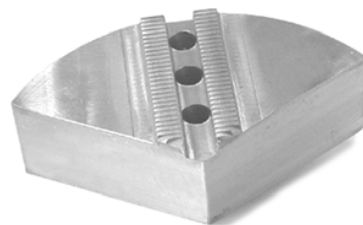


ROUND JAWS- 1/16" x 90° Serrations

FOR USE ON: **SMW Autoblok, Rohm, Pratt Burnerd & Other Chucks**



- Round Jaws allow for complete gripping of workpiece
- Oversized jaws available
- Ideal for thin-walled or irregular shaped workpieces.
- Can be machined to fit workpiece
- Max. length of serrations: 5.75"
- Special "J" dimensions available
- Available in Aluminum, Cast Iron & Steel
- **Made in the USA**



Group
11



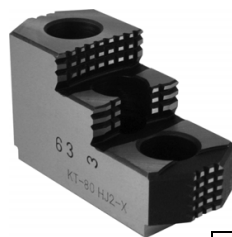
Group No.	Chuck Size	Critical Dimensions				ALUMINUM					CAST IRON		STEEL	
		Groove Width G	Screw Size E	Hole Space D	Holeto Front J	Part Number	Price Set of 3	Industry Ref #	Part Number	Price Set of 3	Part Number	Price Set of 3		
I1-43-62	5	0.433 (11mm)	5/16	0.625 (16mm)	0.875	6-RPH-5256A	\$60.51	-	-	-	6-RPH-5256S	\$154.20		
I1-43-71	5-6	0.433 (11mm)	5/16	0.718 (18mm)	1.150	RPH-6200A	\$68.29	RPH-6200CI	\$89.60	RPH-6200S	\$161.92			
					1.150	RPH-6300A	\$94.14	-	-	-				
					1.150	RPH-6400A	\$101.76	-	-	RPH-6400S	\$250.24			
I1-47-59	5-6	0.473 (12mm)	5/16	0.591 (15mm)	0.900	6-RPH-5200A	\$60.95	-	-	6-RPH-5200S	\$161.92			
					1.050	RPH-6205A	\$68.29	RPH-6205CI	\$89.60	RPH-6205S	\$161.92			
I1-55-71	5-6	0.551 (14mm)	3/8	0.710 (18mm)	1.050	RPH-6405A	\$101.76	-	-	RPH-6405S	\$250.24			
					1.650	8-RPH-6201A	\$101.48	8-RPH-6201CI	\$95.40	8-RPH-6201S	\$224.30			
I1-55-87	5-10	0.551 (14mm)	3/8	0.875 (22mm)	1.650	8-RPH-6401A	\$145.57	-	-	8-RPH-6401S	\$382.71			
					1.913	RPH-10205A	\$134.96	RPH-10205CI	\$172.80	RPH-10205S	\$338.55			
					1.913	RPH-10405A	\$200.30	RPH-10405CI	\$307.19	-	-			
					1.420	RSM-6200A	\$69.10	RSM-6200CI	\$89.60	RSM-6200S	\$161.92			
I1-55-98	5-6	0.551 (14mm)	3/8	0.984 (25mm)	1.420	RSM-6400A	\$108.34	-	-	RSM-6400S	\$250.24			
					1.420	RPH-8200A	\$101.48	RPH-8200CI	\$115.20	RPH-8200S	\$235.52			
I1-66-87	8	0.669 (17mm)	1/2	0.875 (22mm)	1.650	RPH-8400A	\$145.57	-	-	RPH-8400S	\$382.71			
					8	RPH-8201A	\$103.98	RPH-8201CI	\$115.20	RPH-8201S	\$235.52			
I1-66-100	8	0.669 (17mm)	1/2	1.000 (25.5mm)	2.250	RPH-8401A	\$145.57	-	-	RPH-8401S	\$382.71			
					8	10-RPH-8201A	\$136.45	-	-	-				
					10	12-RPH-8201A	\$241.64	-	-	-				
					12	RSM-8200A	\$103.98	RSM-8200CI	\$115.20	RSM-8200S	\$235.52			
I1-66-112	8	0.669 (17mm)	1/2	1.125 (28.5mm)	1.125	RSM-8400A	\$145.57	-	-	RSM-8400S	\$382.71			
					8	RSM-8200A	\$103.98	RSM-8200CI	\$115.20	RSM-8200S	\$235.52			

Round Jaw Material: ALUMINUM-6061-T6 Bar Stock, CAST IRON-Gray, STEEL-1018. 18" & Larger- Aluminum Casting T6

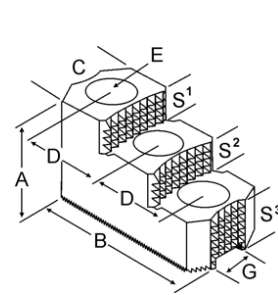
For complete list of applicable chucks, see pages 632-644.

* denotes non-stock item. Please allow 1 week manufacturing time.

HARD JAWS-2 STEP 1/16" x 90° SERRATIONS



- FEATURES:**
- Designed for first operation roughing, expect standard runout between 0.005-0.010
 - Reversible-suitable for OD & ID workholding.
 - **XTRA BITE** -very aggressive bite. Has conical teeth for extra gripping power and ground body to provide improved runout.



Group Number	Chuck Size	Critical Dimensions				Width Inch C	OAL Inch B	Height Inch A	No. of Holes	No. of Steps	Top Step Ht S1	Mid Step Ht S2	Bot Step Ht S3	Part Number	Price Per Set
		Groove Width G	Screw Size E	Hole Space D	Hole Space D										
I1-43-71	6	0.433 (11mm)	5/16	0.719 (18.5mm)	0.719	3.000	2.000	3	2	0.500	0.500	1.000	PH-60HJ2-X	\$395.83	
I1-55-87	6	0.551 (14mm)	3/8	0.875 (22mm)	0.875	3.000	2.000	3	2	0.375	0.375	1.250	PH-61HJ2-X	\$395.83	
I1-66-94	8	0.669 (17mm)	1/2	0.945 (24mm)	0.945	3.500	1.969	3	2	0.530	0.530	0.909	PH-80HJ2-X	\$427.50	

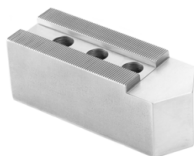
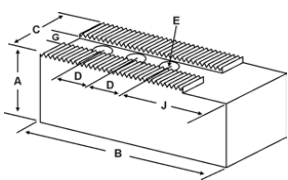
Call Us Today For All Of Your Machine Tool Needs!

2010-11 Master Catalog

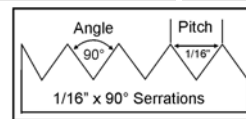
SOFT JAWS- 1/16" x 90° Serrations

C

FOR USE ON: **SMW Autoblok, Rohm, Pratt Burnerd & Other Chucks**



QUANTITY DISCOUNTS!
Order **5 SETS OR MORE** of the same part number soft jaw and receive a **5% DISCOUNT!**



LATHE CHUCKS
LIVE CENTERS

WISE JAWS
WISE ACCESSORIES

STRAIGHT SHANK
COLLET HOLDERS

LATHE BUSHINGS
DRILL CHUCKS

CARBIDE INSERTS
THREADING/GROOVING

CUTTING TOOLS
MACHINERY

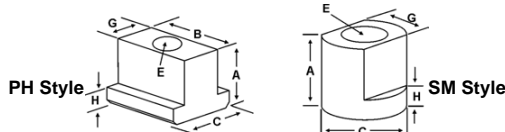
PRECISION TOOLS
DEBURRING

COOLANT/FLUIDS
TOOL STORAGE

Group No.	Chuck Size	Critical Dimensions				• Max. length of serrations: 5.75"					ALUMINUM		STEEL							
		Groove Width G	Screw Size E	Hole Space D	Hole to Front J	Width Inch C	Length Inch B	Hght Inch A	No. of Holes	FLAT END Part Number	Price Set Of 3	FLAT END Part Number	Price Set Of 3							
I1-43-62	5	0.433 (11mm)	5/16	0.625 (16mm)	0.875	1.00	2.500	1.50	3	PH-5156AF	\$32.71	PH-5156F	\$35.22							
2.00								3	PH-5256AF	\$38.08	PH-5256F	\$40.94								
I1-43-71	5 - 6	0.433 (11mm)	5/16	0.718 (18mm)	1.250	1.25	3.125	1.50	3	PH-6150AF	\$35.67	PH-6150F	\$36.46							
2.00								3	PH-6200AF	\$44.26	PH-6200F	\$47.46								
2.50								3	PH-6250AF	\$45.82	PH-6250F	\$48.99								
3.00								3	PH-6300AF	\$54.60	PH-6300F	\$46.26								
I1-47-59	5 - 6	0.473 (12mm)	5/16	0.591 (15mm)	0.900	1.00	2.500	1.50	3	PH-5150AF	\$32.71	PH-5150F	\$35.22							
I1-47-63	5 - 6	0.472	8mm	0.630	0.900	1.00	2.500	1.00	3	PH-5100AF	\$32.71	PH-5100F	\$35.22							
1.25								3	PH-5200AF	\$44.26	PH-5200F	\$44.28								
I1-55-71	5 - 6	0.551 (14mm)	3/8	0.710 (18mm)	1.150	1.25	3.000	1.50	3	PH-6155AF	\$34.29	PH-6155F	\$36.81							
3.00								3	PH-6305AF	\$44.17	PH-6305F	\$47.12								
I1-55-78	5-6	0.551 (14mm)	3/8	0.787	1.625	1.25	3.000	2.00	3	HA-6200AF	\$44.25	HA-6200F	\$44.28							
3.00								3	HA-6300AF	\$50.12	HA-6300F	\$46.26								
4.00								3	HA-6400AF	\$89.22	HA-6400F	\$94.90								
1.50								3	PH-6151AF	\$41.37	PH-6151F	\$44.16								
I1-55-87	5 - 10	0.551 (14mm)	3/8	0.875 (22mm)	2.125	1.50	4.375	2.00	3	PH-6201AF	\$48.85	PH-6201F	\$52.06							
2.50								3	PH-6251AF	\$47.82	PH-6251F	\$54.46								
3.00								3	PH-6301AF	\$64.83	PH-6301F	\$68.90								
4.00								3	PH-6401AF	\$89.23	PH-6401F	\$94.91								
2.00								3	PH-10205AF	\$57.56	PH-10205F	\$46.26								
4.00					3	PH-10405AF	\$79.83	PH-10405F	\$65.90											
3.00					3	PH-10306AF	\$83.81	PH-10306F	\$88.32											
4.00					3	PH-10406AF	\$100.89	PH-10406F	\$106.00											
I1-55-98					5 - 6	0.551 (14mm)	3/8	0.984 (25mm)	1.650	1.25	3.250	1.50	2	SM-6150AF	\$34.33	SM-6150F	\$36.81			
3.00												2	SM-6300AF	\$67.99	SM-6300F	\$47.12				
I1-59-81	6	0.590	10mm	0.810	0.750	1.00	2.000	2.00	2	PB-6200AF	\$44.21	PB-6200F	\$38.96							
I1-66-87	5 - 10	0.669 (17mm)	3/8	0.875 (22mm)	1.550	1.25	3.250	2.00	2	PH-6203AF	\$48.52	PH-6203F	\$52.06							
2.00								3	PH-8200AF	\$47.93	PH-8200F	\$51.04								
3.00								3	PH-8300AF	\$64.83	PH-8300F	\$68.90								
SMW Autoblok BB-D 210, BH-D 210	8	0.669 (17mm)	1/2	0.875 (22mm)	2.125	1.50	4.375	4.00	3	PH-8400AF	\$62.81	PH-8400F	\$66.25							
I1-66-100								8	0.669 (17mm)	1/2	1.000 (25.5mm)	1.725	1.50	4.375	2.00	3	PH-8201AF*	\$48.86	PH-8201F*	\$52.06
PBA 9821-2110															3.00	3	PH-8301AF*	\$64.83	PH-8301F*	\$68.90
I1-66-112	4.00	3	PH-8401AF*	\$74.95	PH-8401F*	\$81.32														
I1-66-112	8	0.669 (17mm)	1/2	1.125 (28.5mm)	1.750	1.50	3.500	2.00	2	SM-8200AF*	\$46.83	SM-8200F*	\$50.05							
								3.00	2	SM-8300AF*	\$69.58	SM-8300F*	\$74.35							
								5.00	2	SM-8500AF*	\$148.60	SM-8500F*	\$161.22							
I1-71-83	8	0.710	12mm	0.830	0.840	1.75	3.000	2.00	2	PB-6201AF	\$48.31	PB-6201F	\$48.54							

For "Pointed" Soft Jaws, please substitute "P" for "F" in the part number. Example: PH-5156AF will be PH-5156AP. For Pointed Jaws Add \$3.25.
Soft Jaw Material: ALUMINUM-6061-T6 Bar Stock, STEEL-1018, "B" JAWS-7075-T6 Aircraft Aluminum
For complete list of applicable chucks, see pages 632-644. * denotes non-stock item. Please allow 1 week manufacturing time.

TEE NUTS & SCREWS



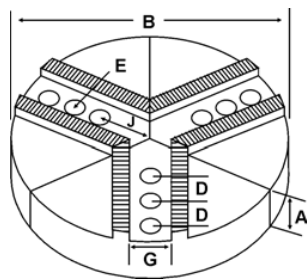
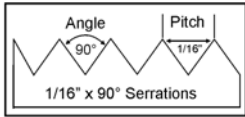
Chuck Size	SMW Autoblok	Critical Dimensions						1 Free Screw Included With Each Jaw Nut				
		Heel Height H	Groove Width G	Screw Size E	Hght Inch A	Width Inch C	Length Inch B	TeeNut Part Number	Price Each	Screw Part Number	Price Each	
5	-	0.250	0.433	5/16"-18 x 1.00"	0.590	0.530	0.620	PH-56TN	\$16.82	S5/1618100	\$2.00	
5 - 6	HF-KS 13032	0.235	0.433	5/16"-18 x 1.25"	0.780	0.685	0.750	PH-60TN	\$16.82	S5/1618125	\$2.00	
5 - 10	-	0.250	0.550	3/8"-16 x 1.00"	0.605	0.750	0.750	PH-61TN	\$16.82	S3/816100	\$2.00	
5 - 6	-	0.370	0.550	3/8"-16 x 1.50"	1.040	0.790	0.790	SM-65TN	\$19.63	S3/816150	\$2.00	
8	-	0.370	0.668	1/2"-13 x 1.50"	1.080	1.080	0.910	SM-80TN	\$19.63	S1/213150	\$2.00	

Call Us Or Visit Our Website For Our Complete Selection!

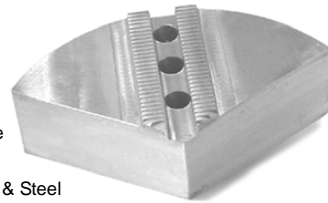
2010-11 Master Catalog

ROUND JAWS- 1/16" x 90° Serrations

FOR USE ON: **SMW Autoblok, Rohm, Pratt Burnerd & Other Chucks**



- Round Jaws allow for complete gripping of workpiece
- Oversized jaws available
- Ideal for thin-walled or irregular shaped workpieces.
- Can be machined to fit workpiece
- Max. length of serrations: 5.75"
- Special "J" dimensions available
- Available in Aluminum, Cast Iron & Steel
- **Made in the USA**



Please See Page 13 For Hard Jaws

Group

I1



Group No.	Chuck Size	Critical Dimensions				Hole to Front J	Middle Hole to Front Jm	Pie Dia B	Height Inch A	No. of Holes	Industry Ref #	ALUMINUM		CAST IRON/STEEL													
		Groove Width G	Screw Size E	Hole Space D	Part Number							Price Set of 3	Part Number	Price Set of 3													
I1-78-118	10 to 12	0.787 (20mm)	1/2	1.187 (30mm)	1.913	3.100	10	2.000	2	-	8-RPH-10200A	\$103.98	-	-													
								2.000	3	-	RPH-10200A	\$125.94	RPH-10200CI	\$172.80													
								2.500	3	-	RPH-10250A	\$175.31	-	-													
								4.000	3	-	RPH-10400A	\$193.86	RPH-10400CI	\$307.19													
								18	2.500	3	-	18-RPH-10250A	\$499.84	-	-												
					2.900	4.087	12	2.000	3	-	-	-	-	-	-	-	-	-	-								
																				12	2.500	3	-	12-RPH-10250A	\$177.32	12-RPH-10200CI	\$255.99
																				12	2.500	3	-	12-RPH-10250A	\$186.73	-	-
																				12	4.000	3	-	12-RPH-10400A	\$351.92	-	-
																				12	5.000	3	-	12-RPH-10500A	\$392.41	-	-
I1-82-112	11 to 12	0.827 (21mm)	5/8	1.125 (28.5mm)	3.630	-	12	2.000	2	-	RPH-11200A	\$177.32	RPH-11200CI	\$255.99													
								4.000	2	-	RPH-11400A	\$332.26	-	-													
I1-82-217	10 to 12	0.827 (21mm)	1/2	2.170 (55mm)	1.855	4.025	10	2.000	3	-	10-RPH-12200A	\$136.45	10-RPH-12200CI	\$255.99													
								4.000	3	-	10-RPH-12400A	\$210.47	-	-													
I1-82-117	10 to 12	0.827 (21mm)	1/2	1.187 (30mm)	2.875	-	12	2.500	2	-	RSM-12250A	\$220.64	-	-													
								4.000	2	-	RSM-12400A	\$351.92	-	-													
					2.900	4.087	12	2.000	3	-	-	-	-	-	-	-	-										
																		12	2.500	3	-	RPH-12250A	\$186.73	-	-		
																		12	4.000	3	-	RPH-12400A	\$332.26	-	-		
I1-82-118m	10	0.827 (21mm)	16mm	1.181 (30mm)	1.819	3.000	10	2.000	3	SMW10P	RSM-10200A	\$125.94	-	-													
								4.000	3	SMW10P1	RSM-10400A	\$193.86	-	-													
								12	2.000	3	SMW12-10P	12-RSM-10200A	\$177.32	-	-												
								15	3.000	3	SMW15-10P	15-RSM-10300A	\$425.00	-	-												
								18	3.000	3	SMW18-10P	18-RSM-10300A	\$555.00	-	-												
								12	0.827 (21mm)	16mm	1.181 (30mm)	2.819	4.000	12	2.000	3	SMW12P	RSM-12201A	\$177.32	-	-						
4.000	3	SMW12P1	RSM-12401A	\$351.92	-	-																					
I1-82-118	8 to 12	0.827 (21mm)	5/8	1.187 (30mm)	1.963	-	8	2.000	2	-	RPH-8205A	\$103.98	RPH-8205CI	\$115.20													
								4.000	2	-	RPH-8405A	\$145.57	RPH-8405S	\$382.71													
					2.875	-	12	2.000	2	-	RAT-12200A	\$177.32	RAT-12200CI	\$255.99													
								2.500	2	-	RAT-12250A	\$220.64	-	-													
								4.000	2	-	RAT-12400A	\$351.92	-	-													
I1-82-156	14 to 18	0.827 (21mm)	5/8	1.562 (39.5mm)	2.875	4.437	15	2.500	3	-	-	-	-	-													
															3.438	5.000	15	3.000	3	PH15P	RPH-15300A4	\$425.00	-	-			
																									2.875	4.437	15
					3.438	5.000	15	4.000	3	PH15P1	RPH-15400A4	\$481.98	-	-													
															2.875	4.437	18	2.500	3	-	18-RPH-15250A	\$499.84	-	-			
					3.438	5.000	18	3.000	3	PH18-15P	18-RPH-15300A4	\$650.00	-	-													
															2.875	4.437	18	4.000	3	PH18-15P1	18-RPH-15400A4	\$674.80	-	-			
					2.875	4.437	18	2.500	3	-	RPH-18250A	\$499.84	-	-													
															3.438	5.000	21	3.000	3	PH21-15P	21-RPH-15300A4	\$699.00	-	-			
					2.875	4.437	24	2.500	3	-	24-RPH-18250A	\$867.50	-	-													
															3.438	5.000	24	3.000	3	PH24-15P	24-RPH-15300A4	\$995.00	-	-			
					2.875	4.437	24	4.000	3	-	24-RPH-18400A	\$1,252.35	-	-													
I1-100-137	14 to 15	1.003 (25.5mm)	3/4	1.375 (35mm)											3.500	4.875	15	2.000	3	-	RPH-15210A	\$165.77	-	-			
					4.000	3	-	RPH-15410A	\$237.74	-	-																
I1-118-197	18	1.181 (30mm)	3/4	1.970 (50mm)	4.060	6.030	18	3.000	3	-	RPH-18300A	\$228.48	-	-													
								4.000	3	-	RPH-18400A	\$674.80	-	-													

Round Jaw Material: ALUMINUM-6061-T6 Bar Stock, CAST IRON-Gray, STEEL-1018. 18" & Larger- Aluminum Casting T6
For complete list of applicable chucks, see pages 632-644. * denotes non-stock item. Please allow 1 week manufacturing time.

Call Us Today For All Of Your Machine Tool Needs!

2010-11 Master Catalog

SOFT JAWS- 1/16" x 90° Serrations

C

LATHE CHUCKS
LIVE CENTERS

WISE JAWS
WISE ACCESSORIES

STRAIGHT SHANK
COLLET HOLDERS

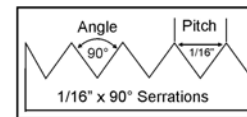
LATHE BUSHINGS
DRILL CHUCKS

CARBIDE INSERTS
THREADING/GROOVING

CUTTING TOOLS
MACHINERY

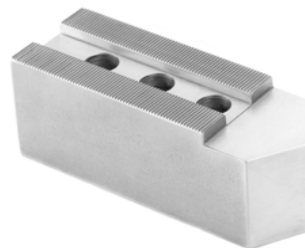
PRECISION TOOLS
DEBURRING

COOLANT/FLUIDS
TOOL STORAGE

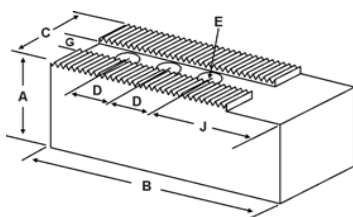


Group
11

QUANTITY DISCOUNTS!
Order **5 SETS OR MORE** of the same part number soft jaw and receive a **5% DISCOUNT!**



- Supplies maximum concentricity on finish turning operations
- Can be bored or turned to fit workpiece
- Steel jaws can be hardened
- Available flat ended or pointed for smaller diameter parts
- Special orders available
- Available in Aluminum, Steel & Aircraft Aluminum (where noted)
- Made in the USA



Group No.	Chuck Size	Critical Dimensions				ALUMINUM					STEEL			
		Groove Width G	Screw Size E	Hole Space D	Hole to Front J	FLAT END Part Number	Price Set Of 3	FLAT END Part Number	Price Set Of 3					
I1-78-118 PBA 15	10 - 12	0.787 (20mm)	1/2	1.187 (30mm)	2.250	1.75	5.250	2.50	3	PH-10250AF	\$64.06	PH-10250F	\$55.94	
						4.00	3	PH-10400AF	\$94.17	PH-10400F	\$77.11			
						2.00	5.500	2.50	3	PH-10252AF	\$68.32	PH-10252F	\$63.09	
I1-82-102	10-12	0.826	16mm	1.102	2.460	1.75	4.750	2.00	2	PB-12200AF	\$58.47	PH-12200F	\$52.70	
						3.00	2	PH-11300AF*	\$72.82	PH-11300F*	\$46.08			
I1-82-112	11 - 12	0.827 (21mm)	5/8	1.125 (28.5mm)	2.440	2.00	5.750	3.00	2	PH-11307AF*	\$79.15	PH-11307F*	\$52.66	
						2.50	3	PH-12250AF	\$53.11	PH-12250F	\$55.94			
I1-82-117	10 - 12	0.827 (21mm)	1/2	1.187 (30mm)	2.250	1.75	5.250	4.00	3	PH-12400AF	\$74.01	PH-12400F	\$77.63	
						2.875	2.00	5.250	2.50	2	SM-12250AF	\$72.31	SM-12250F	\$76.56
						4.00	2	SM-12400AF	\$91.00	SM-12400F	\$95.69			
I1-82-118 SMW Autoblok BHD-250/305/315	8 - 12	0.827 (21mm)	5/8	1.187 (30mm)	1.963	1.50	3.750	2.00	2	PH-8205AF	\$46.89	PH-8205F	\$50.05	
						2.875	2.00	5.250	4.00	2	PH-8405AF	\$62.57	PH-8405F	\$66.25
						2.50	2	AT-12250AF	\$72.31	AT-12250F	\$76.56			
						4.00	2	AT-12400AF	\$101.58	AT-12400F	\$107.17			
I1-82-125	10 - 13	0.827 (21mm)	5/8	1.250 (32mm)	2.130	1.75	4.000	2.25	2	PB-10250AF*	\$47.83	PB-10250F	\$63.12	
						2.630	2.00	4.500	2.50	2	PB-12250AF*	\$59.24	PB-12250F	\$76.56
I1-82-156	14 - 18	0.827 (21mm)	5/8	1.562 (39.5mm)	2.875	2.00	6.750	2.50	3	PH-15250AF	\$86.92	PH-15250F	\$91.85	
						4.00	3	PH-15400AF	\$109.43	PH-15400F	\$114.82			
						2.50	3	PH-16250AF	\$104.58	PH-16250F	\$88.32			
						4.00	3	PH-16400AF	\$133.40	PH-16400F	\$117.76			
I1-100-137	14 - 15	1.003 (25.5mm)	20mm	1.375 (35mm)	2.940	2.25	5.500	3.50	2	PH-15351AF*	\$85.66	PH-15351F*	\$65.01	
						6.250	3.50	2	PH-153517AF*	\$97.35	PH-153517F*	\$74.30		
I1-100-175	16	1.000 (25.5mm)	3/4	1.750 (44.5mm)	3.500	2.00	6.000	3.00	2	PB-16300AF*	\$90.93	PB-16300F*	\$73.92	
I1-118-197	18	1.181 (30mm)	20mm	1.970 (50mm)	3.310	2.50	8.000	3.00	3	PH-18300AF*	\$140.97	PH-18300F*	\$148.35	
								5.00	3	PH-18500AF*	\$246.80	PH-18500F*	\$259.72	

For "Pointed" Soft Jaws, please substitute "P" for "F" in the part number. Example: PH-10250AF will be PH-10250AP.

Pointed Jaws: Up to 10" add \$3.25, 12" & over add \$6.50.

Soft Jaw Material: ALUMINUM-6061-T6 Bar Stock, STEEL-1018, "B" JAWS-7075-T6 Aircraft Aluminum

For complete list of applicable chucks, see pages 632-644.* denotes non-stock item. Please allow 1 week manufacturing time.

TEE NUTS & SCREWS

PH Style



SM Style

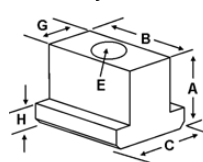


FREE SCREWS!

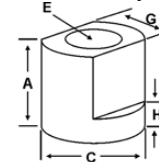
1 High Grade Socket Head Cap Screw Provided With Each Tee Nut!



PH Style



SM Style



Chuck Size	Critical Dimensions						1 Free Screw Included With Each Tee Nut			
	Heel Height H	Groove Width G	Screw Size E	Hght Inch A	Width Inch C	Length Inch B	Tee Nut Part Number	Price Each	Screw Part Number	Price Each
10 - 12	0.425	0.825 (21mm)	1/2"-13 x 1.50"	1.168	-	1.100	SM-120TN	\$22.44	S1/213150	\$2.00
11 - 18	0.325	0.785 (20mm)	1/2"-13 x 1.50"	0.850	1.000	1.000	PH-100TN	\$19.63	S1/213150	\$2.00
11 - 18	0.430	0.827 (21mm)	5/8"-11 x 1.50"	1.000	1.000	1.115	PH-150TN	\$22.44	S5/811150	\$3.00

Call Us Or Visit Our Website For Our Complete Selection!

2010-11 Master Catalog