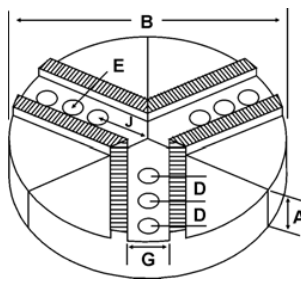
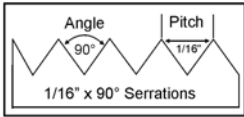
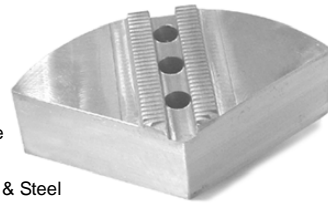


ROUND JAWS- 1/16" x 90° Serrations

FOR USE ON: **SMW Autoblok, Rohm, Pratt Burnerd & Other Chucks**



- Round Jaws allow for complete gripping of workpiece
- Oversized jaws available
- Ideal for thin-walled or irregular shaped workpieces.
- Can be machined to fit workpiece
- Max. length of serrations: 5.75"
- Special "J" dimensions available
- Available in Aluminum, Cast Iron & Steel
- **Made in the USA**



Please See Page 13 For Hard Jaws

Group

I1



Group No.	Chuck Size	Critical Dimensions				Hole to Front J	Middle Hole to Front Jm	Pie Dia B	Height Inch A	No. of Holes	Industry Ref #	ALUMINUM		CAST IRON/STEEL						
		Groove Width G	Screw Size E	Hole Space D	Part Number							Price Set of 3	Part Number	Price Set of 3						
I1-78-118	10 to 12	0.787 (20mm)	1/2	1.187 (30mm)	1.913	3.100	10	2.000	2	-	8-RPH-10200A	\$103.98	-	-						
								2.000	3	-	RPH-10200A	\$125.94	RPH-10200CI	\$172.80						
								2.500	3	-	RPH-10250A	\$175.31	-	-						
								4.000	3	-	RPH-10400A	\$193.86	RPH-10400CI	\$307.19						
								18	2.500	3	-	18-RPH-10250A	\$499.84	-	-					
					2.900	4.087	12	2.000	3	-	-	12	2.000	3	-	12-RPH-10200A	\$177.32	12-RPH-10200CI	\$255.99	
													2.500	3	-	12-RPH-10250A	\$186.73	-	-	
													4.000	3	-	12-RPH-10400A	\$351.92	-	-	
													12	5.000	3	-	12-RPH-10500A	\$392.41	-	-
													15	2.500	3	-	15-RPH-10250A	\$392.31	-	-
I1-82-112	11 to 12	0.827 (21mm)	5/8	1.125 (28.5mm)	3.630	-	12	2.000	2	-	RPH-11200A	\$177.32	RPH-11200CI	\$255.99						
I1-82-217	10 to 12	0.827 (21mm)	1/2	2.170 (55mm)	1.855	4.025	10	2.000	3	-	10-RPH-12200A	\$136.45	10-RPH-12200CI	\$255.99						
I1-82-117	10 to 12	0.827 (21mm)	1/2	1.187 (30mm)	2.875	-	12	2.500	2	-	RSM-12250A	\$220.64	-	-						
4.000								2	-	RSM-12400A	\$351.92	-	-							
2.900					4.087	12	2.000	3	-	-	RPH-12200A	\$177.32	RPH-12200CI	\$255.99						
															12	2.500	3	-	RPH-12250A	\$186.73
I1-82-118m	10	0.827 (21mm)	16mm	1.181 (30mm)	1.819	3.000	10	2.000	3	SMW10P	RSM-10200A	\$125.94	-	-						
4.000								3	SMW10P1	RSM-10400A	\$193.86	-	-							
12								2.000	3	SMW12-10P	12-RSM-10200A	\$177.32	-	-						
15								3.000	3	SMW15-10P	15-RSM-10300A	\$425.00	-	-						
18								3.000	3	SMW18-10P	18-RSM-10300A	\$555.00	-	-						
I1-82-118	12	0.827 (21mm)	16mm	1.181 (30mm)	2.819	4.000	12	2.000	3	SMW12P	RSM-12201A	\$177.32	-	-						
I1-82-118	8 to 12	0.827 (21mm)	5/8	1.187 (30mm)	1.963	-	8	2.000	2	-	RPH-8205A	\$103.98	RPH-8205CI	\$115.20						
4.000								2	-	-	-	RPH-8205S	\$235.52							
2.000								2	-	RPH-8405A	\$145.57	RPH-8405S	\$382.71							
2.500								2	-	RAT-12200A	\$177.32	RAT-12200CI	\$255.99							
4.000								2	-	RAT-12250A	\$220.64	-	-							
I1-82-156	14 to 18	0.827 (21mm)	5/8	1.562 (39.5mm)	2.875	4.437	15	2.500	3	-	RPH-15250A	\$340.00	RPH-15250CI	\$447.98						
3.438								5.000	15	3.000	3	PH15P	RPH-15300A4	\$425.00	-	-				
2.875					4.437	15	4.000	3	-	RPH-15400A	\$481.98	-	-							
3.438					5.000	15	4.000	3	PH15P1	RPH-15400A4	\$481.98	-	-							
2.875					4.437	18	2.500	3	-	18-RPH-15250A	\$499.84	-	-							
3.438					5.000	18	3.000	3	PH18-15P	18-RPH-15300A4	\$650.00	-	-							
														4.000	3	PH18-15P1	18-RPH-15400A4	\$674.80	-	-
2.875					4.437	18	2.500	3	-	RPH-18250A	\$499.84	-	-							
3.438					5.000	21	3.000	3	PH21-15P	21-RPH-15300A4	\$699.00	-	-							
														2.875	4.437	24	2.500	3	-	24-RPH-18250A
3.438	5.000	24	3.000	3	PH24-15P	24-RPH-15300A4	\$995.00	-	-											
2.875	4.437	24	4.000	3	-	24-RPH-18400A	\$1,252.35	-	-											
I1-100-137	14 to 15	1.003 (25.5mm)	3/4	1.375 (35mm)	3.500	4.875	15	2.000	3	-	RPH-15210A	\$165.77	-	-						
I1-118-197	18	1.181 (30mm)	3/4	1.970 (50mm)	4.060	6.030	18	3.000	3	-	RPH-18300A	\$228.48	-	-						
4.000								3	-	RPH-18400A	\$674.80	-	-							

Round Jaw Material: ALUMINUM-6061-T6 Bar Stock, CAST IRON-Gray, STEEL-1018. 18" & Larger- Aluminum Casting T6
For complete list of applicable chucks, see pages 632-644. * denotes non-stock item. Please allow 1 week manufacturing time.

Call Us Today For All Of Your Machine Tool Needs!

2010-11 Master Catalog

SOFT JAWS- 1/16" x 90° Serrations

C

LATHE CHUCKS
LIVE CENTERS

WISE JAWS
WISE ACCESSORIES

STRAIGHT SHANK
COLLET HOLDERS

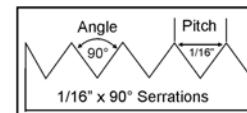
LATHE BUSHINGS
DRILL CHUCKS

CARBIDE INSERTS
THREADING/GROOVING

CUTTING TOOLS
MACHINERY

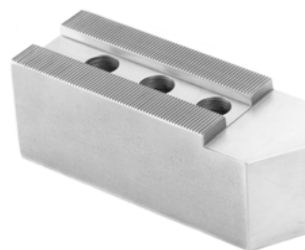
PRECISION TOOLS
DEBURRING

COOLANT/FLUIDS
TOOL STORAGE

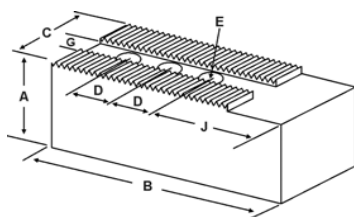


Group
11

QUANTITY DISCOUNTS!
Order **5 SETS OR MORE** of the same part number soft jaw and receive a **5% DISCOUNT!**



- Supplies maximum concentricity on finish turning operations
- Can be bored or turned to fit workpiece
- Steel jaws can be hardened
- Available flat ended or pointed for smaller diameter parts
- Special orders available
- Available in Aluminum, Steel & Aircraft Aluminum (where noted)
- **Made in the USA**



Group No.	Chuck Size	Critical Dimensions				ALUMINUM					STEEL			
		Groove Width G	Screw Size E	Hole Space D	Hole to Front J	FLAT END Part Number	Price Set Of 3	FLAT END Part Number	Price Set Of 3					
I1-78-118 PBA 15	10 - 12	0.787 (20mm)	1/2	1.187 (30mm)	2.250	1.75	5.250	2.50	3	PH-10250AF	\$64.06	PH-10250F	\$55.94	
						4.00	3	PH-10400AF	\$94.17	PH-10400F	\$77.11			
						2.00	5.500	2.50	3	PH-10252AF	\$68.32	PH-10252F	\$63.09	
I1-82-102	10-12	0.826	16mm	1.102	2.460	1.75	4.750	2.00	2	PB-12200AF	\$58.47	PH-12200F	\$52.70	
						3.00	2	PH-11300AF*	\$72.82	PH-11300F*	\$46.08			
I1-82-112	11 - 12	0.827 (21mm)	5/8	1.125 (28.5mm)	2.440	2.00	5.750	3.00	2	PH-11307AF*	\$79.15	PH-11307F*	\$52.66	
						2.50	3	PH-12250AF	\$53.11	PH-12250F	\$55.94			
I1-82-117	10 - 12	0.827 (21mm)	1/2	1.187 (30mm)	2.250	1.75	5.250	4.00	3	PH-12400AF	\$74.01	PH-12400F	\$77.63	
						2.875	2.00	5.250	2.50	2	SM-12250AF	\$72.31	SM-12250F	\$76.56
						4.00	2	SM-12400AF	\$91.00	SM-12400F	\$95.69			
I1-82-118 SMW Autoblok BHD-250/305/315	8 - 12	0.827 (21mm)	5/8	1.187 (30mm)	1.963	1.50	3.750	2.00	2	PH-8205AF	\$46.89	PH-8205F	\$50.05	
						2.875	2.00	5.250	4.00	2	PH-8405AF	\$62.57	PH-8405F	\$66.25
						2.50	2	AT-12250AF	\$72.31	AT-12250F	\$76.56			
						4.00	2	AT-12400AF	\$101.58	AT-12400F	\$107.17			
I1-82-125	10 - 13	0.827 (21mm)	5/8	1.250 (32mm)	2.130	1.75	4.000	2.25	2	PB-10250AF*	\$47.83	PB-10250F	\$63.12	
						2.630	2.00	4.500	2.50	2	PB-12250AF*	\$59.24	PB-12250F	\$76.56
I1-82-156	14 - 18	0.827 (21mm)	5/8	1.562 (39.5mm)	2.875	2.00	6.750	2.50	3	PH-15250AF	\$86.92	PH-15250F	\$91.85	
						4.00	3	PH-15400AF	\$109.43	PH-15400F	\$114.82			
						2.50	3	PH-16250AF	\$104.58	PH-16250F	\$88.32			
						4.00	3	PH-16400AF	\$133.40	PH-16400F	\$117.76			
I1-100-137	14 - 15	1.003 (25.5mm)	20mm	1.375 (35mm)	2.940	2.25	5.500	3.50	2	PH-15351AF*	\$85.66	PH-15351F*	\$65.01	
						6.250	3.50	2	PH-153517AF*	\$97.35	PH-153517F*	\$74.30		
I1-100-175	16	1.000 (25.5mm)	3/4	1.750 (44.5mm)	3.500	2.00	6.000	3.00	2	PB-16300AF*	\$90.93	PB-16300F*	\$73.92	
I1-118-197	18	1.181 (30mm)	20mm	1.970 (50mm)	3.310	2.50	8.000	3.00	3	PH-18300AF*	\$140.97	PH-18300F*	\$148.35	
								5.00	3	PH-18500AF*	\$246.80	PH-18500F*	\$259.72	

For "Pointed" Soft Jaws, please substitute "P" for "F" in the part number. Example: PH-10250AF will be PH-10250AP.

Pointed Jaws: Up to 10" add \$3.25, 12" & over add \$6.50.

Soft Jaw Material: ALUMINUM-6061-T6 Bar Stock, STEEL-1018, "B" JAWS-7075-T6 Aircraft Aluminum

For complete list of applicable chucks, see pages 632-644.* denotes non-stock item. Please allow 1 week manufacturing time.

TEE NUTS & SCREWS

PH Style



SM Style

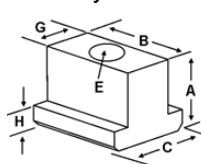


FREE SCREWS!

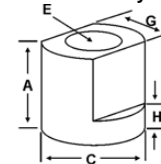
1 High Grade Socket Head Cap Screw Provided With Each Tee Nut!



PH Style



SM Style



Chuck Size	Critical Dimensions						1 Free Screw Included With Each Tee Nut			
	Heel Height H	Groove Width G	Screw Size E	Hght Inch A	Width Inch C	Length Inch B	Tee Nut Part Number	Price Each	Screw Part Number	Price Each
10 - 12	0.425	0.825 (21mm)	1/2"-13 x 1.50"	1.168	-	1.100	SM-120TN	\$22.44	S1/213150	\$2.00
11 - 18	0.325	0.785 (20mm)	1/2"-13 x 1.50"	0.850	1.000	1.000	PH-100TN	\$19.63	S1/213150	\$2.00
11 - 18	0.430	0.827 (21mm)	5/8"-11 x 1.50"	1.000	1.000	1.115	PH-150TN	\$22.44	S5/811150	\$3.00

Call Us Or Visit Our Website For Our Complete Selection!

2010-11 Master Catalog