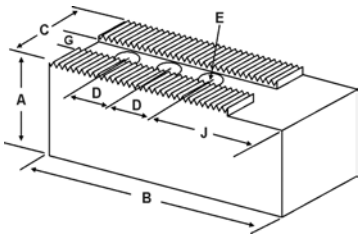


SOFT JAWS- 3/32" x 90° Serrations

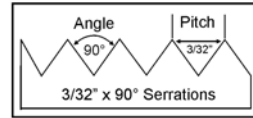
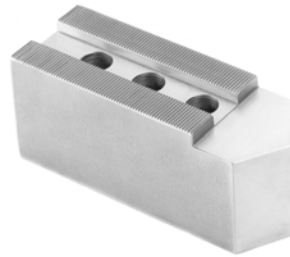
FOR USE ON: **SMW Autoblok, Forkardt, Rohm, Pratt Burnerd & Other Chucks**

C

LATHES CHUCKS
LIVE CENTERS



- Supplies maximum concentricity on finish turning operations
- Can be bored or turned to fit workpiece
- Steel jaws can be hardened
- Available flat ended or pointed for smaller diameter parts
- Special orders available
- Available in Aluminum, Steel & Aircraft Aluminum (where noted)
- **Made in the USA**



Group
13

QUANTITY DISCOUNTS!
Order **5 SETS OR MORE** of the same part number soft jaw and receive a **5% DISCOUNT!**

WISE JAWS
WISE ACCESSORIES

Group No.	Critical Dimensions								ALUMINUM		STEEL	
	Groove Width G	Screw Size E	Hole Space D	Hole to Front J	Width Inch C	Length Inch B	Hght Inch A	No. of Holes	FLAT END Part Number	Price Set Of 3	FLAT END Part Number	Price Set Of 3
I3-100-138 ROHM KFD 400-500-630	1.004 (25.5mm)	20mm	1.380 (35mm)	3.500	2.50	6.50	2.50	2	FK-16250AF	\$97.69	FK-16250F	\$103.04
							4.00	2	FK-16400AF	\$140.02	FK-16400F	\$147.20
							2.50	3	FK-16251AF	\$125.44	FK-16251F	\$132.48
							4.00	3	FK-16401AF	\$208.85	FK-16401F	\$220.80
I3-100-156 SMW Autoblok ALD-400, BB 500-ES, BB 630-ES	1.000 (25.5mm)	3/4	1.562 (39.5mm)	3.250	2.50	6.50	3.00	2	SM-16300AF	\$111.80	SM-16300F	\$117.76
							4.00	2	SM-16400AF	\$122.76	SM-16400F	\$133.18
							5.00	2	SM-16500AF	\$154.68	SM-16500F	\$161.92
							3.00	3	SM-16301AF	\$153.26	SM-16301F	\$161.92
							5.00	3	SM-16501AF	\$210.19	SM-16501F	\$220.80
I3-100-175	1.000 (25.5mm)	3/4	1.750 (44.5mm)	7.460	2.50	10.00	3.50	2	FK-25350AF*	\$215.95	FK-25350F*	\$227.26
							5.00	2	FK-25500AF*	\$308.51	FK-25500F*	\$324.67
I3-110-162	1.102 (28mm)	3/4	1.625 (41.5mm)	3.630	3.50	6.75	3.00	2	SM-20300AF*	\$217.26	SM-20300F*	\$215.69
							5.00	2	SM-20500AF*	\$282.47	SM-20500F*	\$280.43
							3.00	2	SM-20307AF*	\$238.05	SM-20307F*	\$235.75
							5.00	2	SM-20507AF*	\$336.10	SM-20507F*	\$341.61
I3-118-250	1.181 (30mm)	1.00	2.500 (63.5mm)	4.250	3.50	8.00	3.00	2	SM-24300AF	\$209.13	SM-24300F	\$220.80
							5.00	2	SM-24500AF	\$348.53	SM-24500F	\$367.99
							3.00	2	SM-24301AF	\$265.49	SM-24301F	\$279.68
							5.00	2	SM-24501AF	\$419.87	SM-24501F	\$441.59
I3-118-275	1.181 (30mm)	1.00	2.750 (70mm)	4.500	3.50	10.00	3.50	2	SM-40350AF*	\$304.97	SM-40350F*	\$320.94
							5.00	2	SM-40500AF*	\$435.67	SM-40500F*	\$458.46

For "Pointed" Soft Jaws, please substitute "P" for "F" in the part number. Example: FK-16250AF will be FK-16250AP. For Pointed Jaws add \$6.50.

Soft Jaw Material: ALUMINUM-6061-T6 Bar Stock, STEEL-1018, "B" JAWS-7075-T6 Aircraft Aluminum

For complete list of applicable chucks, see pages 632-644. * denotes non-stock item. Please allow 1 week manufacturing time.

STRAIGHT SHANK
COLLET HOLDERS

LATHE BUSHINGS
DRILL CHUCKS

CARBIDE INSERTS
THREADING/GROOVING

CUTTING TOOLS
MACHINERY

PRECISION TOOLS
DEBURRING

COOLANT/FLUIDS
TOOL STORAGE

TEE NUTS & SCREWS

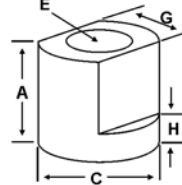
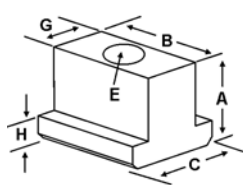


PH Style

SM Style

PH Style

SM Style



Chuck Size	Forkardt	Gamet	Pratt Burnerd PBA	Critical Dimensions				1 Free Screw Included With Each Tee Nut					
				Heel Height H	Groove Width G	Screw Size E	Hght Inch A	Width Inch C	Length Inch B	Tee Nut Part Number	Price Each	Screw Part Number	Price Each
16 - 20	-	-	-	0.575	0.999 (25.5mm)	3/4"- 10 x 1.75	1.150	1.370	1.370	SM-160TN	\$25.24	S3/410175	\$4.00
15 - 24	KP/T 400-500, KS 500	DE 400	400 HYD. FRONT END	0.433	1.003 (25.5mm)	20mm	1.141	1.417	1.082	FK-160TN	\$59.58	M2025050	\$3.00
25 - 32	-	-	-	0.728	1.180 (30mm)	1"- 8	1.752	1.772	-	SM-240TN	\$48.37	S1008	\$4.00

Call Us Or Visit Our Website For Our Complete Selection!

2010-11 Master Catalog