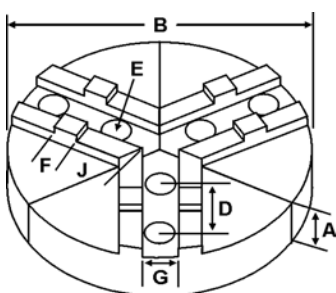
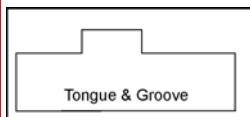
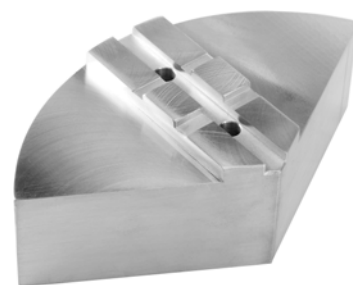


ROUND JAWS- AMERICAN STANDARD TONGUE & GROOVE

FOR USE ON: Amestra, Buck, Bison, BTC, Cushman, Huron, PBA, SCA, Yuasa, Rohm Chucks



- American Standard Tongue & Groove
- Round Jaws allow for complete gripping of workpiece
- Oversized jaws available
- Ideal for thin-walled or irregular shaped workpieces.
- Can be machined to fit workpiece
- All jaws have 2 holes
- Special "J" dimensions available
- Available in Aluminum, Cast Iron & Steel
- **Made in the USA**



Group

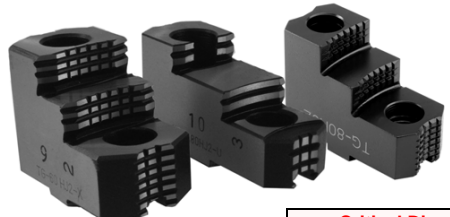


OFF-CENTER TONGUE

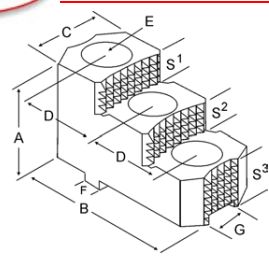
Group No.	Chuck Size	Type	Critical Dimensions				Tongue to Front J	Pie Dia B	Hght Inch A	ALUMINUM		CAST IRON		STEEL		
			Groove Width G	Tongue Width F	Screw Size E	Hole Space D				Part Number	Price Set Of 3	Part Number	Price Set Of 3	Part Number	Price Set Of 3	
TI-31-5/16-12	5	MEDIUM DUTY	0.313	0.500	5/16	1.250	1.100	6	2.00	6-RTG-5200A	69.10	-	-	-	-	
TI-31-3/8-15	6	MEDIUM DUTY	0.313	0.500	3/8	1.500	1.360	6	2.00	RTG-6200A	63.12	RTG-6200CI	89.60	RTG-6200S*	161.92	
3.00									RTG-6300A	94.14	RTG-6300CI	140.79	-	-		
4.00									RTG-6400A	97.89	-	-	-	-		
5.00									RTG-6500A*	159.79	-	-	-	-		
6.00									RTG-6600A	159.79	-	-	-	-		
TI-31-7/16-15	6	HEAVY DUTY	0.313	0.500	7/16	1.500	1.260	6	2.00	RTG-6205A	65.70	RTG-6205CI	89.60	-	-	
									4.00	RTG-6405A	95.32	-	-	-		
TI-31-3/8-17	6	HEAVY DUTY	0.313	0.500	7/16	1.500	1.200	8	2.00	8-RTG-6205A	98.90	-	-	-		
									4.00	8-RTG-6405A	133.35	-	-	-		
TI-31-3/8-17	8	MEDIUM DUTY	0.313	0.500	3/8	1.750	2.150	6	2.00	6-RTG-8200A	69.10	-	-	-		
									4.00	6-RTG-8400A*	161.52	-	-	-		
									8	2.00	RTG-8200A	91.50	RTG-8200CI	115.20	RTG-8200S	235.52
										3.00	RTG-8300A	126.81	-	-	RTG-8300S*	406.54
									4.00	RTG-8400A	127.00	RTG-8400CI	217.59	-	-	
									10	2.00	10-RTG-8200A	120.78	10-RTG-8200CI	172.80	10-RTG-8200S	338.55
										3.00	10-RTG-8300A	197.88	-	-	-	
										4.00	10-RTG-8400A	176.50	-	-	-	
										2.00	12-RTG-8200A	177.32	-	-	-	
										4.00	12-RTG-8250A*	220.64	-	-	-	
TI-31-1/2-17	8	HEAVY DUTY	0.313	0.500	1/2	1.750	2.150	8	2.00	RTG-8205A	98.90	RTG-8205CI	115.20	-	-	
									4.00	RTG-8405A	133.35	RTG-8405CI	217.59	-	-	
									2.00	10-RTG-8205A	132.38	-	-	-		
									4.00	10-RTG-8405A	200.30	-	-	-		

Round Jaw Material: ALUMINUM-6061-T6 Bar Stock, CAST IRON-Gray, STEEL-1018, 18" & Larger- Aluminum Casting T6
For complete list of applicable chucks, see pages 632-644. * denotes non-stock item. Please allow 1 week manufacturing time.

HARD JAWS AMERICAN STANDARD TONGUE & GROOVE



- Designed for first operation roughing, expect standard runoff between 0.005-0.010
- Reversible-suitable for OD & ID workholding.
- **XTRA BITE (-X)** -very aggressive bite. Has conical teeth for extra gripping power and ground body to provide improved runoff.
- **GRIP-RITE-OEM Style (-U)** hard jaws have ground tips and provide better runoff.
- **SHARK JAWS** have conical teeth for extra gripping power and black oxide for long life. Ideal for castings and scaly material. Made in the USA.
- 1 & 2 step jaws available.



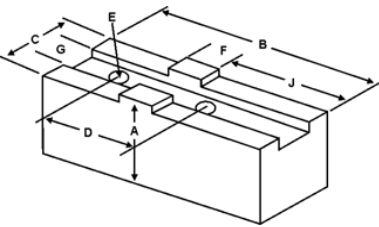
Group	Chuck Size	Type	Critical Dimensions				Width Inch C	OAL Inch B	Height Inch A	No. of Holes	No. of Steps	Top Step Ht S1	Mid Step Ht S2	Bot Step Ht S3	Part Number	Price Per Set	Code
			Groove Width G	Tongue Width F	Screw Size E	Hole Space D											
TI-31-3/8-15	6	-	0.313	0.500	3/8	1.500	1.035	2.834	1.511	2	2	0.354	0.354	0.803	TG-60HJ2-U	\$249.38	E
							1.500	2.780	1.969	2	2	0.530	0.530	0.909	TG-60HJ2-X	\$262.50	E
TI-31-3/8-17	8	-	0.313	0.500	3/8	1.750	1.250	3.550	2.000	2	2	0.600	0.360	1.040	TG-80HJ2	\$316.67	D
							1.114	3.227	1.629	2	2	0.394	0.394	0.843	TG-80HJ2-U	\$270.75	E
							1.500	3.287	1.969	2	2	0.530	0.530	0.909	TG-80HJ2-X	\$285.00	E

Call Us Today For All Of Your Machine Tool Needs!

SOFT JAWS- AMERICAN STANDARD TONGUE & GROOVE

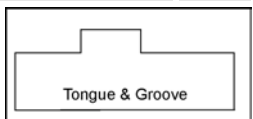
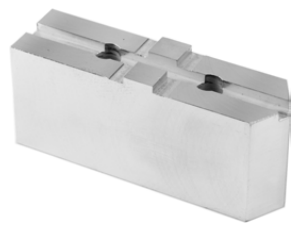
C

FOR USE ON: **Buck, Bison, BTC, Cushman, Huron, Amestra, PBA, Yuasa & Rohm Chucks**



American Standard Tongue & Groove

QUANTITY DISCOUNTS!
Order **5 SETS OR MORE** of the same part number soft jaw and receive a **5% DISCOUNT!**



MADE IN THE USA			Critical Dimensions									ALUMINUM		STEEL						
Group No.	Chuck Size	Type	Groove Width G	Tongue Width F	Screw Size E	Hole Space D	Tongue to Front J	Tongue Position	Width Inch C	Length Inch B	Hght Inch A	FLAT END Part Number	Price Set Of 3	FLAT END Part Number	Price Set Of 3					
TI-25-1/4-11	4	MEDIUM DUTY	0.250	0.437	1/4	1.188	0.880	Offset	0.625	2.000	1.25	TG-4120AF	36.44	TG-4120F	39.43					
TI-31-5/16-12	5	MEDIUM DUTY	0.313	0.500	5/16	1.250	1.100	Offset	0.750	2.375	1.50	TG-5150AF	30.84	TG-5150F	33.27					
										2.375	2.00	TG-5200AF	36.57	TG-5200F	39.43					
TI-31-3/8-15	6	MEDIUM DUTY	0.313	0.500	3/8	1.500	1.360	Offset	1.000	2.750	1.50	TG-6150AF	31.03	TG-6150F	33.36					
2.00											TG-6200AF	36.70	TG-6200F	39.43						
2.50											TG-6250AF	44.00	TG-6250F	44.00						
3.00											TG-6300AF	44.50	TG-6300F	44.50						
4.00											TG-6400AF	84.00	TG-6400F	91.13						
1.50											TG-6151AF	31.03	TG-6151F	29.44						
						1.610	Offset	1.000	3.000	1.50	TG-6153AF	36.49	TG-6153F	39.25						
						1.350	Centered	1.000	3.200	2.00	TG-6203AF	42.19	TG-6203F	44.00						
										2.50	TG-6253AF	44.25	TG-6253F	44.25						
										3.00	TG-6303AF	44.75	TG-6303F	44.75						
										Offset	1.500	3.250	2.50	TG-6252AF	45.54	TG-6252F	48.53			
TI-31-7/16-15	6	HEAVY DUTY	0.313	0.500	7/16	1.500	1.260	Offset	1.500	2.750	1.50	TG-6155AF	31.08	TG-6155F	33.36					
2.00											TG-6205AF	36.88	TG-6205F	39.43						
2.50				TG-6255AF	45.60	TG-6255F	48.70													
3.00				TG-6305AF	45.98	TG-6305F	48.99													
				0.500	7/16	1.500	Center	Centered	1.500	2.813	1.50	TG-6158AF*	60.25	TG-6158F*	33.36					
											3.50	TG-6358AF*	69.38	TG-6358F*	57.16					
TI-31-3/8-17	8	MEDIUM DUTY	0.313	0.500	3/8	1.750	2.000	Offset	1.250	3.750	2.00	TG-8200AF	37.27	TG-8200F	40.43					
																2.00	TG-8200BF	53.77	-	-
																2.50	TG-8250AF	44.11	TG-8250F	47.01
																3.00	TG-8300AF	48.45	TG-8300F	51.55
																3.00	TG-8300BF	69.41	-	-
																4.00	TG-8400AF	65.70	TG-8400F	66.60
													5.00	TG-8500AF	148.60	TG-8500F	161.22			
													6.00	TG-8600AF	161.52	TG-8600F	175.24			
													Centered	1.250	4.500	2.00	TG-8203AF	48.02	TG-8203F	42.06
																2.50	TG-8253AF	53.80	TG-8253F	57.35
																3.00	TG-8303AF	59.58	TG-8303F	63.41
																4.00	TG-8403AF	74.08	TG-8403F	70.09
TI-31-1/2-17	8	HEAVY DUTY	0.313	0.500	1/2	1.750	2.000	Offset	1.500	3.750	2.00	TG-8205AF	42.60	TG-8205F	40.66					
																3.00	TG-8305AF	54.14	TG-8305F	57.52
																4.00	TG-8405AF	68.66	TG-8405F	72.88
					0.313	0.500	1/2	1.750	Center	Centered	1.500	3.313	6.00	TG-8605AF*	169.60	TG-8605F*	184.00			
																2.00	TG-8208AF*	46.87	TG-8208F*	64.07
																3.50	TG-8358AF*	75.15	TG-8358F*	70.75
TI-31-1/2-17	8	8" W & S	0.313	0.500	1/2	1.750	1.813	Offset	1.25	3.50	2.50	TG-8259AF*	41.17	TG-8259F*	43.88					
																3.00	TG-8309AF*	66.73	TG-8309F*	71.45

For "Pointed" Soft Jaws, please substitute "P" for "F" in the part number. Example: TG-4120AF will be TG-4120AP. For Pointed Jaws add \$3.25.
Soft Jaw Material: ALUMINUM-6061-T6 Bar Stock, STEEL-1018, "B" JAWS-7075-T6 Aircraft Aluminum
For complete list of applicable chucks, see pages 632-644. * denotes non-stock item. Please allow 1 week manufacturing time.

3 JAW SCROLL CHUCKS ZERO SET

- With Top Reversible Jaws
- .0005" TIR repeatability on duplicated parts through 12" chucks.
- Semi-steel body
- Scroll and jaws hardened and ground for increased life and gripping force
- Includes chuck, master jaws, top jaws, T-wrench & mounting screws



Size	OD Min	OD Max	ID Min	ID Max	Max RPM	Part Number	Price
6"	0.125	6.000	1.875	5.750	3400	BT-1063R	\$420.75
8"	0.250	8.250	2.125	6.750	3100	BT-1083R	\$467.50
10"	0.500	9.360	2.937	8.718	2700	BT-1103R	\$722.50
12"	0.500	11.312	3.281	10.125	2200	BT-1123R	\$892.50



Call Us Or Visit Our Website For Our Complete Selection!

2010-11 Master Catalog

LATHES CHUCKS
LIVE CENTERS
VISE ACCESSORIES
VISE JAWS
STRAIGHT SHANK COLLET HOLDERS
LATHES BUSHINGS
DRILL CHUCKS
CARBIDE INSERTS
THREADING/GROOVING
CUTTING TOOLS
MACHINERY
PRECISION TOOLS
DEBURRING
COOLANT/FLUIDS
TOOL STORAGE