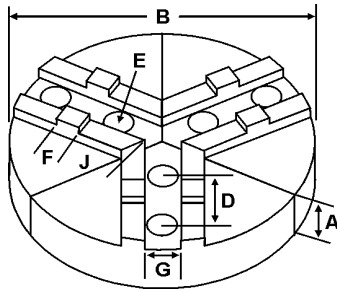
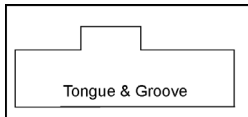
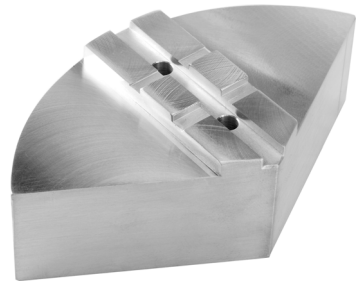


# ROUND JAWS- AMERICAN STANDARD TONGUE & GROOVE

FOR USE ON: Amestra, Buck, Bison, BTC, Cushman, Huron, PBA, SCA, Yuasa, Rohm Chucks



- American Standard Tongue & Groove
- Round Jaws allow for complete gripping of workpiece
- Oversized jaws available
- Ideal for thin-walled or irregular shaped workpieces.
- Can be machined to fit workpiece
- All jaws have 2 holes
- Special "J" dimensions available
- Available in Aluminum, Cast Iron & Steel
- **Made in the USA**



Group

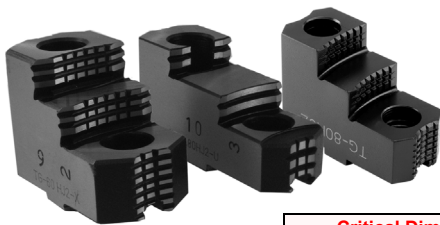


## OFF-CENTER TONGUE

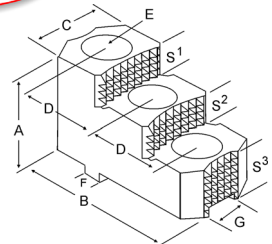
Group No.	Chuck Size	Type	Critical Dimensions				Tongue to Front J	Pie Dia B	Hght Inch A	ALUMINUM		CAST IRON		STEEL	
			Groove Width G	Tongue Width F	Screw Size E	Hole Space D				Part Number	Price Set Of 3	Part Number	Price Set Of 3	Part Number	Price Set Of 3
TI-31-5/16-12	5	MEDIUM DUTY	0.313	0.500	5/16	1.250	1.100	6	2.00	6-RTG-5200A	\$74.63	-	-	-	-
TI-31-3/8-15	6	MEDIUM DUTY	0.313	0.500	3/8	1.500	1.360	6	2.00	RTG-6200A	\$68.17	RTG-6200CI	\$98.56	RTG-6200S*	\$174.87
3.00									RTG-6300A	\$101.67	RTG-6300CI	\$154.87	-	-	
4.00									RTG-6400A	\$105.72	-	-	-	-	
5.00									RTG-6500A*	\$172.57	-	-	-	-	
8								2.00	8-RTG-6200A	\$104.03	8-RTG-6200CI*	\$126.72	8-RTG-6200S*	\$254.36	
								4.00	8-RTG-6400A	\$141.23	-	-	-		
								2.00	8-RTG-6205A	\$106.81	-	-	-		
								4.00	8-RTG-6405A	\$144.02	-	-	-		
TI-31-7/16-15	6	HEAVY DUTY	0.313	0.500	7/16	1.500	1.260	6	2.00	RTG-6205A	\$70.96	RTG-6205CI	\$98.56	-	-
4.00									RTG-6405A	\$102.95	-	-	-		
8								2.00	8-RTG-6205A	\$106.81	-	-	-		
								4.00	8-RTG-6405A	\$144.02	-	-	-		
TI-31-3/8-17	8	MEDIUM DUTY	0.313	0.500	3/8	1.750	1.200	6	2.00	6-RTG-8200A	\$74.63	-	-	-	-
4.00									6-RTG-8400A*	\$174.44	-	-	-	-	
8								2.00	RTG-8200A	\$98.82	RTG-8200CI	\$126.72	RTG-8200S	\$254.36	
								3.00	RTG-8300A	\$136.95	-	-	RTG-8300S*	\$439.06	
								4.00	RTG-8400A	\$137.16	RTG-8400CI	\$239.35	-	-	
								2.00	10-RTG-8200A	\$130.44	10-RTG-8200CI	\$190.08	10-RTG-8200S	\$365.63	
10							3.00	10-RTG-8300A	\$213.71	-	-	-	-		
							4.00	10-RTG-8400A	\$202.41	-	-	-	-		
							12	2.00	12-RTG-8200A	\$191.51	-	-	-	-	
								2.50	12-RTG-8250A*	\$238.29	-	-	-	-	
12							4.00	12-RTG-8400A*	\$380.07	-	-	-	-		
							5.00	12-RTG-8500A*	\$423.80	-	-	-	-		
	8	2.00	RTG-8205A	\$106.81	RTG-8205CI	\$126.72	-	-							
		4.00	RTG-8405A	\$144.02	RTG-8405CI	\$239.35	-	-							
10	2.00	10-RTG-8205A	\$142.97	-	-	-	-								
	4.00	10-RTG-8405A	\$216.32	-	-	-	-								

Round Jaw Material: ALUMINUM-6061-T6 Bar Stock, CAST IRON-Gray, STEEL-1018, 18" & Larger- Aluminum Casting T6  
For complete list of applicable chucks, see pages 632-644. \* denotes non-stock item. Please allow 1 week manufacturing time.

## HARD JAWS AMERICAN STANDARD TONGUE & GROOVE



- Designed for first operation roughing, expect standard runout between 0.005-0.010
- Reversible-suitable for OD & ID workholding.
- **XTRA BITE (-X)** -very aggressive bite. Has conical teeth for extra gripping power and ground body to provide improved runout.
- **GRIP-RITE-OEM Style (-U)** hard jaws have ground tips and provide better runout.
- **SHARK JAWS** have conical teeth for extra gripping power and black oxide for long life. Ideal for castings and scaly material. Made in the USA.
- 1 & 2 step jaws available.



Group	Chuck Size	Type	Critical Dimensions				Width Inch C	OAL Inch B	Height Inch A	No. of Holes	No. of Steps	Top Step Ht S1	Mid Step Ht S2	Bot Step Ht S3	Part Number	Price Per Set	Code
			Groove Width G	Tongue Width F	Screw Size E	Hole Space D											
TI-31-3/8-15	6	-	0.313	0.500	3/8	1.500	1.035	2.834	1.511	2	2	0.354	0.354	0.803	TG-60HJ2-U	\$249.38	E
							1.500	2.780	1.969	2	2	0.530	0.530	0.909	TG-60HJ2-X	\$262.50	E
TI-31-3/8-17	8	-	0.313	0.500	3/8	1.750	1.250	3.550	2.000	2	2	0.600	0.360	1.040	TG-80HJ2	\$316.67	D
							1.114	3.227	1.629	2	2	0.394	0.394	0.843	TG-80HJ2-U	\$270.75	E
							1.500	3.287	1.969	2	2	0.530	0.530	0.909	TG-80HJ2-X	\$285.00	E

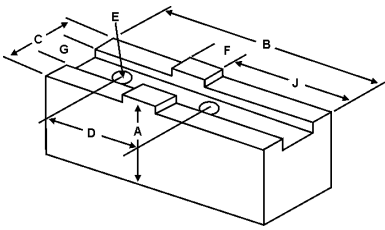
Call Us Today For All Of Your Machine Tool Needs!

2010-11 Master Catalog

# SOFT JAWS- AMERICAN STANDARD TONGUE & GROOVE

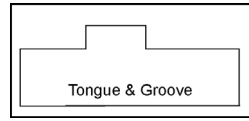
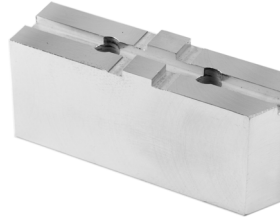
C

FOR USE ON: **Buck, Bison, BTC, Cushman, Huron, Amestra, PBA, Yuasa & Rohm Chucks**



American Standard Tongue & Groove

**QUANTITY DISCOUNTS!**  
Order **5 SETS OR MORE** of the same part number soft jaw and receive a **5% DISCOUNT!**



MADE IN THE USA

Critical Dimensions

ALUMINUM

STEEL

Group No.	Chuck Size	Type	Groove Width G	Tongue Width F	Screw Size E	Hole Space D	Tongue to Front J	Tongue Position	Width Inch C	Length Inch B	Hght Inch A	FLAT END Part Number	Price Set Of 3	FLAT END Part Number	Price Set Of 3
TI-25-1/4-11	4	MEDIUM DUTY	0.250	0.437	1/4	1.188	0.880	Offset	0.625	2.000	1.25	TG-4120AF	\$39.36	TG-4120F	\$42.58
TI-31-5/16-12	5	MEDIUM DUTY	0.313	0.500	5/16	1.250	1.100	Offset	0.750	2.375	1.50	TG-5150AF	\$33.31	TG-5150F	\$35.93
TI-31-3/8-15	6	MEDIUM DUTY	0.313	0.500	3/8	1.500	1.360	Offset	1.000	2.750	1.50	TG-6150AF	\$33.51	TG-6150F	\$36.03
											2.00	TG-6200AF	\$39.64	TG-6200F	\$42.58
											2.50	TG-6250AF	\$47.52	TG-6250F	\$47.52
											3.00	TG-6300AF	\$48.06	TG-6300F	\$48.06
											4.00	TG-6400AF	\$90.72	TG-6400F	\$98.42
											1.50	TG-6151AF	\$33.51	TG-6151F	\$31.80
											1.50	TG-6153AF	\$39.41	TG-6153F	\$42.39
											2.00	TG-6203AF	\$45.57	TG-6203F	\$47.52
											2.50	TG-6253AF	\$47.79	TG-6253F	\$47.79
											3.00	TG-6303AF	\$48.33	TG-6303F	\$48.33
TI-31-7/16-15	6	HEAVY DUTY	0.313	0.500	7/16	1.500	1.260	Offset	1.500	2.750	1.50	TG-6155AF	\$33.57	TG-6155F	\$36.03
											2.00	TG-6205AF	\$39.83	TG-6205F	\$42.58
											2.50	TG-6255AF	\$49.25	TG-6255F	\$52.60
											3.00	TG-6305AF	\$49.66	TG-6305F	\$52.91
											1.50	TG-6256AF	\$52.11	TG-6256F	\$55.58
											1.50	TG-6158AF*	\$65.07	TG-6158F*	\$36.03
TI-31-3/8-17	8	MEDIUM DUTY	0.313	0.500	3/8	1.750	2.000	Offset	1.250	3.750	3.50	TG-6358AF*	\$74.93	TG-6358F*	\$61.73
											2.00	TG-8200AF	\$40.25	TG-8200F	\$43.66
											2.00	TG-8200BF	\$58.07	-	-
											2.50	TG-8250AF	\$47.64	TG-8250F	\$50.77
											3.00	TG-8300AF	\$52.33	TG-8300F	\$55.67
											3.00	TG-8300BF	\$74.96	-	-
											4.00	TG-8400AF	\$70.96	TG-8400F	\$71.93
											5.00	TG-8500AF	\$160.49	TG-8500F	\$174.12
											6.00	TG-8600AF	\$174.44	TG-8600F	\$189.26
											2.00	TG-8203AF	\$51.86	TG-8203F	\$45.42
TI-31-1/2-17	8	HEAVY DUTY	0.313	0.500	1/2	1.750	2.000	Offset	1.500	3.750	2.50	TG-8253AF	\$58.10	TG-8253F	\$61.94
											3.00	TG-8303AF	\$64.35	TG-8303F	\$68.48
											4.00	TG-8403AF	\$80.01	TG-8403F	\$75.70
											2.00	TG-8205AF	\$46.01	TG-8205F	\$43.91
											3.00	TG-8305AF	\$58.47	TG-8305F	\$62.12
											4.00	TG-8405AF	\$74.15	TG-8405F	\$78.71
TI-31-1/2-17	8	8" W & S	0.313	0.500	1/2	1.750	1.813	Offset	1.25	3.50	6.00	TG-8605AF*	\$183.17	TG-8605F*	\$198.72
											2.00	TG-8208AF*	\$50.62	TG-8208F*	\$69.20
											3.50	TG-8358AF*	\$81.16	TG-8358F*	\$76.41
											2.50	TG-8259AF*	\$44.46	TG-8259F*	\$47.39
											3.00	TG-8309AF*	\$72.07	TG-8309F*	\$77.17
											2.00	TG-8208AF*	\$50.62	TG-8208F*	\$69.20

For "Pointed" Soft Jaws, please substitute "P" for "F" in the part number. Example: TG-4120AF will be TG-4120AP. For Pointed Jaws add \$3.25.

Soft Jaw Material: ALUMINUM-6061-T6 Bar Stock, STEEL-1018, "B" JAWS-7075-T6 Aircraft Aluminum

For complete list of applicable chucks, see pages 632-644. \* denotes non-stock item. Please allow 1 week manufacturing time.

## PRECISION LIVE CENTERS

- Bison Type 8811
- Machined from one piece of forging, hardened and precisely ground
- Three precision high-quality bearings are protected by a special steel shield and neoprene seal
- Live centers are lubricated with a special grease and do not require any additional lubrication



Morse Taper	Head Dia	Point Dia	OAL	Max RPM	Max Wt of Workpiece	Precision		
						TIR	Part Number	Price
1	1.50	.59	4.07	5000	220 lbs	0.0003	BI-7565-001	\$95.14
2	1.57	.70	4.74	5000	460 lbs	0.0003	BI-7565-002	\$102.06
3	2.20	.98	6.14	4000	925 lbs	0.0003	BI-7565-003	\$122.89
4	2.52	1.10	7.24	3000	1850 lbs	0.0003	BI-7565-004	\$143.86
5	3.35	1.61	9.33	2500	4400 lbs	0.0004	BI-7565-005	\$234.68
6	5.12	2.48	13.13	2000	7700 lbs	0.0004	BI-7565-006	\$461.08

Call Us Or Visit Our Website For Our Complete Selection!

2010-11 Master Catalog

43

LATHE CHUCKS  
LIVE CENTERS

VISE ACCESSORIES  
VISE JAWS

STRAIGHT SHANK  
COLLET HOLDERS

LATHE BUSHINGS  
DRILL CHUCKS

CARBIDE INSERTS  
THREADING/GROOVING

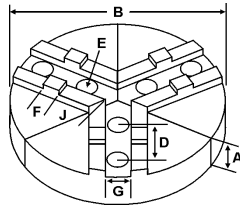
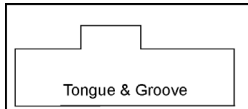
CUTTING TOOLS  
MACHINERY

PRECISION TOOLS  
DEBURRING

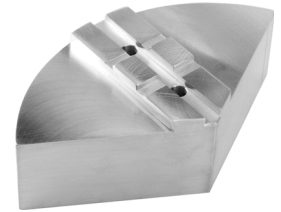
COOLANT/FLUIDS  
TOOL STORAGE

# ROUND JAWS- AMERICAN STANDARD TONGUE & GROOVE

FOR USE ON: **Buck, Bison, BTC, Cushman, Huron, PBA, Amestra, SCA, Yuasa, Rohm Chucks**



- American Standard Tongue & Groove
- Round Jaws allow for complete gripping of workpiece
- Oversized jaws available
- Ideal for thin-walled or irregular shaped workpieces.
- Can be machined to fit workpiece
- Special "J" dimensions available
- Available in Aluminum & Cast Iron



**OFF-CENTER TONGUE**

Group No.	Chuck Size	Type	Critical Dimensions				Tongue to Front J	Pie Dia B	Hght Inch A	ALUMINUM		CAST IRON		STEEL									
			Groove Width G	Tongue Width F	Screw Size E	Hole Space D				Part Number	Price Set Of 3	Part Number	Price Set Of 3	Part Number	Price Set Of 3								
TI-50-1/2-21	10	MED. DUTY	0.500	0.750	1/2	2.125	2.200	12	5.00	12-RTG-10500A*	\$423.80	-	-	-	-								
								18	4.00	18-RTG-10400A*	\$728.78	-	-	-	-								
								8	4.00	8-RTG-10400A	\$157.22	-	-	-	-								
									6.00	8-RTG-10600A	\$249.80	-	-	-	-								
									2.00	RTG-10200A	\$130.44	RTG-10200CI	\$190.08	RTG-10200S	\$365.63								
									3.00	RTG-10300A	\$173.10	-	-	-	-								
									4.00	RTG-10400A	\$190.62	RTG-10400CI	\$337.91	RTG-10400S	\$562.77								
									5.00	RTG-10500A	\$302.45	-	-	-	-								
								2.125	2.200	6.00	-	-	-	RTG-10600S	\$786.09								
										12	2.00	12-RTG-10200A	\$191.51	-	-	-							
									4.00	12-RTG-10400A	\$331.00	-	-	-	-								
									15	2.50	15-RTG-10250A	\$439.39	-	-	-	-							
4.00	15-RTG-10400A	\$539.82	-	-	-	-																	
2.00	RTG-10205A	\$142.97	RTG-10205CI	\$190.08	-	-																	
3.00	RTG-10305A*	\$213.71	-	-	-	-																	
TI-50-5/8-21	10	HEAVY DUTY	0.500	0.750	5/8	2.125	2.200	10	4.00	RTG-10405A	\$216.32	RTG-10405CI	\$337.91	-	-								
								5.00	RTG-10505A*	\$302.45	-	-	-	-									
								2.00	12-RTG-10205A	\$191.51	-	-	-	-									
								4.00	12-RTG-10405A	\$358.84	-	-	-	-									
								12	2.50	15-RTG-10255A*	\$439.39	-	-	-	-								
									4.00	15-RTG-10405A	\$539.82	-	-	-	-								
									2.50	15-RTG-10255A*	\$439.39	-	-	-	-								
								TI-50-1/2-25	12	MED. DUTY	0.500	0.750	1/2	2.500	1.770	8	4.00	8-RTG-12400A	\$157.22	-	-	-	-
																6.00	8-RTG-12600A	\$269.51	-	-	-	-	
																2.425	2.00	10-RTG-12200A	\$130.44	-	-	-	-
																	4.00	10-RTG-12400A	\$227.31	-	-	-	-
																3.370	12	2.00	RTG-12200A	\$172.80	RTG-12200CI	\$281.59	-
2.50	RTG-12250A	\$175.50	-	-	-																		
3.00	RTG-12300A	\$267.26	-	-	-																		
4.00	RTG-12400A	\$293.76	-	-	RTG-12400S	\$750.36																	
5.00	RTG-12500A	\$423.80	-	-	-	-																	
15	2.50	15-RTG-12250A	\$439.39	15-RTG-12250CI	\$492.78	-	-																
18	4.00	15-RTG-12400A	\$539.82	-	-	-	-																
	2.50	18-RTG-12250A	\$539.83	-	-	-	-																
	4.00	18-RTG-12400A	\$728.78	-	-	-	-																
	2.50	21-RTG-12250A*	\$777.03	-	-	-	-																
	24	2.50	24-RTG-12250A	\$936.90	-	-	-																
	TI-50-5/8-25	12	HEAVY DUTY	0.500	0.750	5/8	2.500	3.370	12	2.00	RTG-12205A	\$191.51	RTG-12205CI	\$281.59	-	-							
2.50									RTG-12255A	\$208.60	-	-	-	-									
4.00									RTG-12405A	\$358.84	-	-	-	-									
5.00									RTG-12505A	\$423.80	-	-	-	-									
3.350									2.50	15-RTG-12255A	\$439.39	15-RTG-12255CI	\$492.78	-	-								
									4.00	15-RTG-12405A	\$539.82	-	-	-	-								
									2.50	18-RTG-12255A	\$539.83	-	-	-	-								
3.100									4.00	18-RTG-12405A	\$728.78	-	-	-	-								
									2.00	21-RTG-12405A*	\$971.86	-	-	-	-								
									4.00	21-RTG-12405A*	\$971.86	-	-	-	-								

Round Jaw Material: ALUMINUM-6061-T6 Bar Stock, CAST IRON-Gray, STEEL-1018. 18" & Larger- Aluminum Casting T6  
For complete list of applicable chucks, see pages 632-644. \* denotes non-stock item. Please allow 1 week manufacturing time.

## HARD JAWS



Group	Chuck Size	Type	Critical Dimensions				Width Inch C	OAL Inch B	Height Inch A	No. of Holes	No. of Steps	Top Step Ht S1	Mid Step Ht S2	Bot Step Ht S3	Part Number	Price Per Set	Code
			Groove Width G	Tongue Width F	Screw Size E	Hole Space D											
TI-50-1/2-21	10	MEDIUM DUTY	0.500	0.750	1/2	2.125	1.750	3.770	2.500	2	2	0.688	0.440	1.380	TG-100HJ2	\$333.33	D
							1.389	4.034	2.063	2	2	0.551	0.551	0.961	TG-100HJ2-U	\$285.00	E
							1.750	3.920	2.469	2	2	0.650	0.650	1.169	TG-100HJ2-X	\$300.00	E
TI-50-1/2-25	12	MEDIUM DUTY	0.500	0.750	1/2	2.500	1.750	4.500	2.500	2	2	0.680	0.440	1.380	TG-120HJ2	\$450.00	D
							1.586	4.585	2.063	2	2	0.591	0.591	0.882	TG-120HJ2-U	\$384.75	E
							1.750	4.550	2.500	2	2	0.650	0.650	1.200	TG-120HJ2-X	\$405.00	E
TI-50-5/8-25	12	HVY DTY	0.500	0.750	5/8	2.500	1.750	4.550	2.500	2	2	0.650	0.650	1.200	TG-125HJ2-X	\$435.00	E

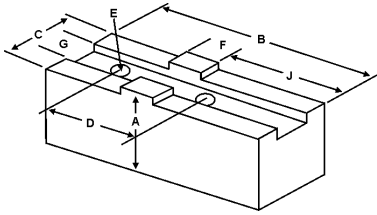
Call Us Today For All Of Your Machine Tool Needs!

2010-11 Master Catalog

# SOFT JAWS- AMERICAN STANDARD TONGUE & GROOVE

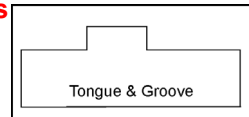
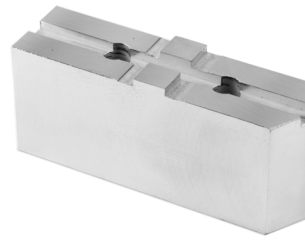
C

FOR USE ON: Amestra, Buck, Bison, BTC, Cushman, Huron, PBA, Yuasa, & Rohm Chucks



American Standard Tongue & Groove

**QUANTITY DISCOUNTS!**  
Order **5 SETS OR MORE** of the same part number soft jaw and receive a **5% DISCOUNT!**



MADE IN THE USA			Critical Dimensions									ALUMINUM		STEEL	
Group No.	Chuck Size	Type	Groove Width G	Tongue Width F	Screw Size E	Hole Space D	Tongue to Front J	Tongue Position	Width Inch C	Length Inch B	Hght Inch A	FLAT END Part Number	Price Set Of 3	FLAT END Part Number	Price Set Of 3
TI-50-1/2-21	10	MEDIUM DUTY	0.500	0.750	1/2	2.125	2.300	Offset	1.500	4.500	2.00	TG-10200AF	\$44.55	TG-10200F	\$44.55
											2.00	TG-10200BF	\$66.47	-	-
											2.50	TG-10250AF	\$52.54	TG-10250F	\$55.67
											3.00	TG-10300AF	\$58.82	TG-10300F	\$62.24
							2.00	TG-10202AF	\$55.89	TG-10202F	\$55.89				
							3.00	TG-10302AF	\$70.69	TG-10302F	\$74.60				
							2.00	TG-10203AF	\$80.86	TG-10203F	\$49.20				
							3.00	TG-10303AF	\$88.61	TG-10303F	\$93.34				
2.00	TG-10205AF	\$49.35	TG-10205F	\$52.32											
2.50	TG-10255AF	\$56.96	TG-10255F	\$60.26											
3.00	TG-10305AF	\$61.98	TG-10305F	\$65.40											
4.00	TG-10405AF	\$74.63	TG-10405F	\$78.51											
TI-50-5/8-21	10	HEAVY DUTY	0.500	0.750	5/8	2.125	2.300	Offset	1.750	4.500	2.00	TG-10208AF*	\$42.87	TG-10208F*	\$43.85
											4.00	TG-10408AF*	\$93.57	TG-10408F*	\$85.97
							Center	Centered	1.750	3.938	2.50	TG-10259AF*	\$56.02	TG-10259F*	\$48.91
											3.50	TG-10359AF*	\$78.41	TG-10359F*	\$68.46
TI-50-5/8-21	10	10" W & S	0.500	0.750	5/8	2.125	2.125	Offset	1.750	4.25	2.50	TG-10259AF*	\$56.02	TG-10259F*	\$48.91
TI-50-1/2-25	12	MEDIUM DUTY	0.500	0.750	1/2	2.500	2.900	Offset	1.750	5.250	2.00	TG-12200AF	\$55.65	TG-12200F	\$57.54
											2.50	TG-12250AF	\$62.02	TG-12250F	\$62.38
											3.00	TG-12300AF	\$71.42	TG-12300F	\$75.34
											4.00	TG-12400AF	\$84.14	TG-12400F	\$88.42
											6.00	TG-12600AF	\$194.46	TG-12600F	\$206.67
											2.00	TG-12203AF	\$79.13	TG-12203F	\$60.56
							Centered	Centered	1.750	6.550	2.50	TG-12253AF	\$93.13	TG-12253F	\$98.81
											3.00	TG-12303AF	\$108.64	TG-12303F	\$115.17
											4.00	TG-12403AF	\$124.56	TG-12403F	\$126.07
											2.50	TG-12252AF	\$80.64	TG-12252F	\$66.33
											4.00	TG-12402AF	\$119.67	TG-12402F	\$126.10
											6.00	TG-12602AF	\$262.40	TG-12602F	\$270.26
3.670	Offset	2.000	6.000	2.50	TG-12258AF*	\$63.98	TG-12258F*	\$70.87							
				4.00	TG-12408AF*	\$76.70	TG-12408F*	\$80.41							
TI-50-5/8-25	12	12" W & S	0.500	0.750	5/8	2.500	2.500	Offset	1.750	4.875	2.50	TG-12259AF*	\$62.53	TG-12259F*	\$66.17
TI-50-5/8-25	12	HEAVY DUTY	0.500	0.750	5/8	2.500	2.900	Offset	2.000	5.250	2.00	TG-12205AF	\$58.70	TG-12205F	\$62.05
											2.50	TG-12255AF	\$65.55	TG-12255F	\$65.77
											3.00	TG-12305AF	\$78.65	TG-12305F	\$82.87
							3.670	Offset	2.000	6.000	4.00	TG-12405AF	\$86.03	TG-12405F	\$90.06
											2.50	TG-12256AF	\$85.23	TG-12256F	\$90.15
											4.00	TG-12406AF	\$119.67	TG-12406F	\$126.10

For "Pointed" Soft Jaws, please substitute "P" for "F" in the part number. Example: TG-10200AF will be TG-10200AP. Pointed Jaws: Up to 10" add \$3.25, 12" & over add \$6.50.  
Soft Jaw Material: ALUMINUM-6061-T6 Bar Stock, STEEL-1018, "B" JAWS-7075-T6 Aircraft Aluminum  
For complete list of applicable chucks, see pages 632-644. \* denotes non-stock item. Please allow 1 week manufacturing time.

## HARD TOP JAWS

FOR 3 & 4-JAW SELF-CENTERING SCROLL CHUCKS  
American Standard Tongue & Groove Jaws



**NEW ITEM!**



Chuck Dia	Groove Width	Tongue Width	OAL	Height	3-Jaw Chucks		4-Jaw Chucks	
					Part Number	Price Per Set	Part Number	Price Per Set
5"	0.313	0.500	2.205	1.516	TG-50HJ2-B	\$160.02	TG-50HJ2-4-B	\$201.81
6"	0.313	0.500	2.638	1.634	TG-60HJ2-B	\$196.29	TG-60HJ2-4-B	\$229.05
8"	0.313	0.500	3.347	1.713	TG-80HJ2-B	\$212.94	TG-80HJ2-4-B	\$301.38
10"	0.500	0.750	3.740	2.023	TG-100HJ2-B	\$249.51	TG-100HJ2-4-B	\$342.18
12"	0.500	0.750	4.331	2.165	TG-120HJ2-B	\$307.62	TG-120HJ2-4-B	\$421.20
15-3/4"	0.500	0.750	5.000	2.539	TG-150HJ2-B	\$417.69	TG-150HJ2-4-B	\$571.92

Call Us Or Visit Our Website For Our Complete Selection!

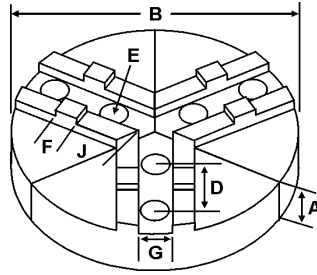
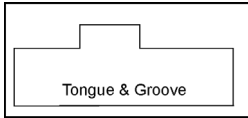
2010-11 Master Catalog

45

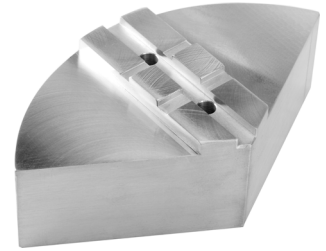
LATHE CHUCKS  
LIVE CENTERS  
VISE ACCESSORIES  
VISE JAWS  
STRAIGHT SHANK  
COLLET HOLDERS  
LATHE BUSHINGS  
DRILL CHUCKS  
CARBIDE INSERTS  
THREADING/GROOVING  
CUTTING TOOLS  
MACHINERY  
PRECISION TOOLS  
DEBURRING  
COOLANT/FLUIDS  
TOOL STORAGE

# ROUND JAWS- AMERICAN STANDARD TONGUE & GROOVE

FOR USE ON: **Buck, Bison, BTC, Cushman, Huron, PBA, SCA, Yuasa, Rohm Chucks**



- American Standard Tongue & Groove
- Round Jaws allow for complete gripping of workpiece
- Oversized jaws available
- Ideal for thin-walled or irregular shaped workpieces.
- Can be machined to fit workpiece
- All jaws have 2 holes
- Special "J" dimensions available
- Available in Aluminum & Cast Iron
- Made in the USA



Group

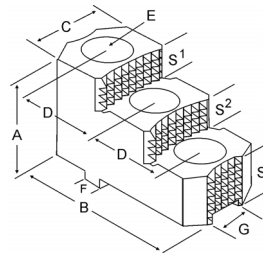
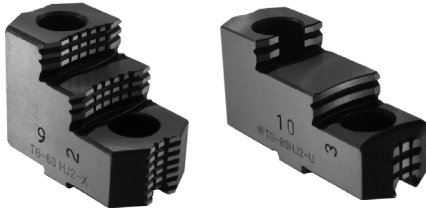


### OFF-CENTER TONGUE

			Critical Dimensions							ALUMINUM		CAST IRON							
Group No.	Chuck Size	Type	Groove Width G	Tongue Width F	Screw Size E	Hole Space D	Tongue to Front J	Pie Dia B	Hght Inch A	Part Number	Price Set Of 3	Part Number	Price Set Of 3						
TI-50-5/8-30	15	MEDIUM DUTY	0.500	0.750	5/8	3.000	3.370	12	2.00	12-RTG-15200A	\$191.51	-	-						
									4.00	12-RTG-15400A	\$380.07	-	-						
									3.785	15	2.50	RTG-15250A	\$439.39	RTG-15250CI	\$492.78				
											4.00	RTG-15400A	\$539.82	RTG-15400S	\$1,183.26				
											5.00	RTG-15500A*	\$843.82	-	-				
									4.100	18	2.50	18-RTG-15250A	\$539.83	-	-				
							4.00	18-RTG-15400A			\$728.78	-	-						
							4.550	21	2.50	21-RTG-15250A	\$777.03	-	-						
									4.00	21-RTG-15400A	\$971.86	-	-						
							3.825	24	2.50	24-RTG-15250A	\$936.90	-	-						
									4.00	24-RTG-15400A	\$1,352.54	-	-						
							TI-50-3/4-30	15	HEAVY DUTY	0.500	0.750	3/4	3.000	3.785	15	2.50	RTG-15255A	\$439.39	RTG-15255CI
4.00	RTG-15405A	\$539.82	-	-															
5.00	RTG-15505A*	\$843.82	-	-															
4.100	18	2.50	18-RTG-15255A	\$539.83	-	-													
		4.00	18-RTG-15405A	\$728.78	-	-													
4.550	21	2.50	21-RTG-15255A	\$777.03	-	-													
		4.00	21-RTG-15405A	\$971.86	-	-													
3.785	24	2.50	24-RTG-15255A	\$936.90	-	-													
		4.00	24-RTG-15405A	\$1,352.54	-	-													
18 & Up	HEAVY DUTY	0.500	0.750	3/4	3.000	5.100								12	3.00	12-RTG-18300A*	\$315.85	-	-
															6.00	12-RTG-18600A*	\$558.39	-	-
															18	2.50	RTG-18250A	\$539.83	-
							4.00	RTG-18400A	\$728.78	-	-								
							21	2.50	21-RTG-18250A	\$777.03	-	-							
								4.00	21-RTG-18400A	\$971.86	-	-							
24	2.50	24-RTG-18250A	\$936.90	-	-														
	4.00	24-RTG-18400A	\$1,352.54	-	-														
TI-50-7/8-30	18 & Up	HEAVY DUTY	0.500	0.750	7/8	3.000	5.000	24	4.00	RTG-24400A	\$1,352.54	-	-						

Round Jaw Material: ALUMINUM-6061-T6 Bar Stock, CAST IRON-Gray, STEEL-1018. 18" & Larger- Aluminum Casting T6  
For complete list of applicable chucks, see pages 632-644.\* denotes non-stock item. Please allow 1 week manufacturing time.

### HARD JAWS-2 STEP



#### FEATURES:

- Designed for first operation roughing, expect standard runout between 0.005-0.010
- Reversible-suitable for OD & ID workholding.
- GRIP-RITE-OEM style hard jaws have ground tips and provide better runout.
- XTRA BITE -very aggressive bite. Has conical teeth for extra gripping power and ground body to provide improved runout.

			Critical Dimensions														
Group	Chuck Size	Type	Groove Width G	Tongue Width F	Screw Size E	Hole Space D	Width Inch C	OAL Inch B	Height Inch A	No. of Holes	No. of Steps	Top Step Ht S1	Mid Step Ht S2	Bot Step Ht S3	Part Number	Price Per Set	Code
TI-50-5/8-30	15 & UP	MEDIUM DUTY	0.500	0.750	5/8	3.000	1.980	5.392	2.613	2	2	0.551	0.551	1.511	TG-150HJ2-U	\$470.25	E
							2.500	5.350	3.469	2	2	0.950	0.950	1.569	TG-150HJ2-X	\$495.00	E
TI-50-3/4-30	15 & UP	HEAVY DUTY	0.500	0.750	3/4	3.000	2.500	5.350	3.469	2	2	0.950	0.950	1.569	TG-155HJ2-X	\$550.00	E

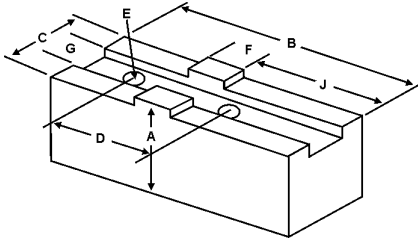
Call Us Today For All Of Your Machine Tool Needs!

2010-11 Master Catalog

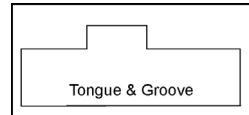
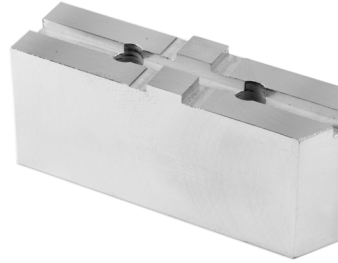
# SOFT JAWS- AMERICAN STANDARD TONGUE & GROOVE

C

FOR USE ON: **Buck, Bison, BTC, Cushman, Huron, PBA, Yuasa & Rohm Chucks**



- American Standard Tongue & Groove
- Supplies maximum concentricity on finish turning operations
- Can be bored or turned to fit workpiece
- Steel jaws can be hardened
- Available flat ended or pointed for smaller diameter parts
- Special orders available
- Available in Aluminum, Steel & Aircraft Aluminum (where noted)
- Made in the USA

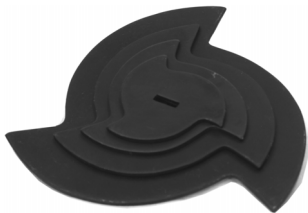


**QUANTITY DISCOUNTS!**  
Order **5 SETS OR MORE** of the same part number soft jaw and receive a **5% DISCOUNT!**

Group No.	Chuck Size	Type	Critical Dimensions				Tongue to Front J	Tongue Position	Width Inch C	Length Inch B	Hght Inch A	ALUMINUM		STEEL	
			Groove Width G	Tongue Width F	Screw Size E	Hole Space D						FLAT END Part Number	Price Set Of 3	FLAT END Part Number	Price Set Of 3
TI-50-5/8-30	15	MED. DUTY	0.500	0.750	5/8	3.000	2.900	Offset	1.750	5.750	1.50	TG-15150AF	\$87.29	TG-15150F	\$93.54
											2.00	TG-15200AF	\$61.83	TG-15200F	\$65.50
											2.50	TG-15250AF	\$71.23	TG-15250F	\$75.34
											3.00	TG-15300AF	\$83.68	TG-15300F	\$88.42
											4.00	TG-15400AF	\$93.45	TG-15400F	\$98.25
											2.000	TG-15252AF	\$85.27	TG-15252F	\$90.06
											3.350	TG-15402AF	\$116.80	TG-15402F	\$122.81
											0.750	5/8	3.000	Centered	Centered
TI-50-3/4-30	15	15" W & S	0.500	0.750	3/4	3.000	3.000	Offset	2.000	5.75	3.50	TG-15359AF*	\$101.21	TG-15359F*	\$106.66
											5.00	TG-15509AF*	\$144.58	TG-15509F*	\$152.37
TI-50-3/4-30	15	HEAVY DUTY	0.500	0.750	3/4	3.000	2.900	Offset	1.750	5.750	2.50	TG-15255AF	\$74.26	TG-15255F	\$78.59
											3.00	TG-15305AF	\$77.63	TG-15305F	\$84.22
											4.00	TG-15405AF	\$96.47	TG-15405F	\$101.52
											2.50	TG-15256AF	\$85.70	TG-15256F	\$90.06
TI-50-3/4-30	18		0.500	0.750	3/4	3.000	3.660	Offset	2.250	6.500	2.50	TG-18250AF	\$93.18	TG-18250F	\$98.25
											4.00	TG-18400AF	\$124.95	TG-18400F	\$130.99
											5.00	TG-18500AF	\$113.19	TG-18500F	\$122.81
											2.50	TG-18252AF	\$116.11	TG-18252F	\$122.81
											4.00	TG-18402AF	\$125.05	TG-18402F	\$135.68
											5.00	TG-18502AF	\$225.41	TG-18502F	\$195.32
TI-50-3/4-30	18	18" W & S	0.500	0.750	3/4	3.000	3.000	Offset	2.500	6.000	2.50	TG-18256AF	\$123.67	TG-18256F	\$130.99
											5.00	TG-18506AF	\$171.87	TG-18506F	\$254.36
											3.00	TG-18308AF*	\$180.32	TG-18308F*	\$191.96
											5.00	TG-18508AF*	\$234.46	TG-18508F*	\$205.44
TI-50-3/4-30	18	18" W & S	0.500	0.750	3/4	3.000	3.000	Offset	2.500	6.000	3.50	TG-18359AF*	\$151.47	TG-18359F*	\$160.24
5.00	TG-18509AF*	\$216.39	TG-18509F*	\$228.93											
TI-50-7/8-30	24	HEAVY DUTY	0.500	0.750	7/8	3.000	4.500	Offset	3.000	7.500	3.00	TG-24300AF	\$258.97	TG-24300F	\$251.51
											5.00	TG-24500AF	\$341.74	TG-24500F	\$331.77

For "Pointed" Soft Jaws, please substitute "P" for "F" in the part number. Example: TG-15150AF will be TG-15150AP. For Pointed Jaws add \$6.50.  
Soft Jaw Material: ALUMINUM-6061-T6 Bar Stock, STEEL-1018, "B" JAWS-7075-T6 Aircraft Aluminum  
For complete list of applicable chucks, see pages 632-644. \* denotes non-stock item. Please allow 1 week manufacturing time.

## BORING STARS



Set of 4 Boring Stars

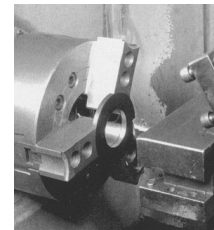
- FEATURES:**
- Save set-up time.
  - Obtain any diameter
  - Easily and quickly.
  - Reduces soft jaw costs.
  - Allows straight through boring of soft jaws.

Part # JBT-100  
**\$27.00/set**

## ANTI-BACKLASH RING SET



A valuable time saver for your lathes and turning centers!  
Every ring you will ever need for boring out your soft jaws on one convenient wooden rack.



Description	Number of Rings	Size	Part Number	Price
Standard Set	48	1 to 3-15/16 (1/16 inc.)	AI-220-00	\$283.48
Short Stack	16	1 to 1-15/16 (1/16 inc.)	AI-220-10	\$82.26

Call Us Or Visit Our Website For Our Complete Selection!

2010-11 Master Catalog

47

LATHE CHUCKS  
LIVE CENTERS

VISE JAWS  
VISE ACCESSORIES

STRAIGHT SHANK  
COLLET HOLDERS

LATHE BUSHINGS  
DRILL CHUCKS

CARBIDE INSERTS  
THREADING/GROOVING

CUTTING TOOLS  
MACHINERY

PRECISION TOOLS  
DEBURRING

COOLANT/FLUIDS  
TOOL STORAGE