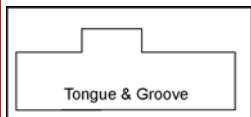
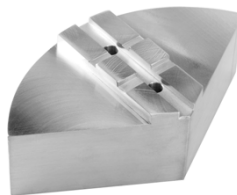
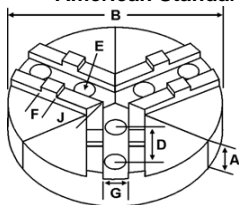


# ROUND JAWS- AMERICAN STANDARD TONGUE & GROOVE

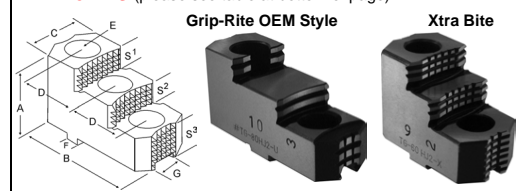
FOR USE ON: **Buck, Bison, BTC, Cushman, Huron, PBA, Amestra, SCA, Yuasa, Rohm Chucks**



American Standard Tongue & Groove



**HARD JAWS** (please see table at bottom of page)



Group



**OFF-CENTER TONGUE**

| Group No.    | Chuck Size     | Type          | Critical Dimensions |                |              |              | ALUMINUM    |                |              | CAST IRON      |               | STEEL          |             |            |        |      |               |                |                |                |        |   |   |
|--------------|----------------|---------------|---------------------|----------------|--------------|--------------|-------------|----------------|--------------|----------------|---------------|----------------|-------------|------------|--------|------|---------------|----------------|----------------|----------------|--------|---|---|
|              |                |               | Groove Width G      | Tongue Width F | Screw Size E | Hole Space D | Part Number | Price Set Of 3 | Part Number  | Price Set Of 3 | Part Number   | Price Set Of 3 |             |            |        |      |               |                |                |                |        |   |   |
| TI-50-1/2-21 | 10             | MEDIUM DUTY   | 0.500               | 0.750          | 1/2          | 2.125        | 2.200       | 12             | 5.00         | 12-RTG-10500A* | 392.41        | -              | -           | -          | -      |      |               |                |                |                |        |   |   |
|              |                |               |                     |                |              |              |             | 18             | 4.00         | 18-RTG-10400A* | 674.80        | -              | -           | -          | -      |      |               |                |                |                |        |   |   |
|              |                |               |                     |                |              |              |             | 8              | 4.00         | 8-RTG-10400A   | 145.57        | -              | -           | -          | -      |      |               |                |                |                |        |   |   |
|              |                |               |                     |                |              |              |             |                | 6.00         | 8-RTG-10600A   | 231.30        | -              | -           | -          | -      |      |               |                |                |                |        |   |   |
|              |                |               |                     |                |              |              |             |                | 2.00         | RTG-10200A     | 120.78        | RTG-10200CI    | 172.80      | RTG-10200S | 338.55 |      |               |                |                |                |        |   |   |
|              |                |               |                     |                |              |              |             | 2.125          | 2.200        | 10             | 0.500         | 0.750          | 1/2         | 2.125      | 2.200  | 3.00 | RTG-10300A    | 160.28         | -              | -              | -      | - |   |
|              |                |               |                     |                |              |              |             |                |              |                |               |                |             |            |        | 4.00 | RTG-10400A    | 176.50         | RTG-10400CI    | 307.19         | -      | - |   |
|              |                |               |                     |                |              |              |             |                |              |                |               |                |             |            |        | 5.00 | RTG-10500A    | 280.05         | -              | -              | -      | - |   |
|              |                |               |                     |                |              |              |             |                |              |                |               |                |             |            |        | 2.00 | 12-RTG-10200A | 160.88         | -              | -              | -      | - |   |
|              |                |               |                     |                |              |              |             |                |              |                |               |                |             |            |        | 4.00 | 12-RTG-10400A | 272.00         | -              | -              | -      | - |   |
|              |                |               |                     |                |              |              |             |                |              |                |               |                |             |            |        | 2.50 | 15-RTG-10250A | 392.31         | -              | -              | -      | - |   |
|              |                |               |                     |                |              |              |             | TI-50-5/8-21   | 10           | HEAVY DUTY     | 0.500         | 0.750          | 5/8         | 2.125      | 2.200  | 10   | 2.00          | RTG-10205A     | 132.38         | RTG-10205CI    | 172.80 | - | - |
| 3.00         | RTG-10305A*    | 197.88        | -                   | -              | -            | -            |             |                |              |                |               |                |             |            |        |      |               |                |                |                |        |   |   |
| 4.00         | RTG-10405A     | 200.30        | RTG-10405CI         | 307.19         | -            | -            |             |                |              |                |               |                |             |            |        |      |               |                |                |                |        |   |   |
| 5.00         | RTG-10505A*    | 280.05        | -                   | -              | -            | -            |             |                |              |                |               |                |             |            |        |      |               |                |                |                |        |   |   |
| 12           | 2.00           | 12-RTG-10205A | 177.32              | -              | -            | -            |             |                |              |                |               |                |             |            |        |      |               |                |                |                |        |   |   |
| 4.00         | 12-RTG-10405A  | 332.26        | -                   | -              | -            | -            |             |                |              |                |               |                |             |            |        |      |               |                |                |                |        |   |   |
| TI-50-1/2-25 | 12             | MEDIUM DUTY   | 0.500               | 0.750          | 1/2          | 2.500        | 1.770       | 8              | 4.00         | 8-RTG-12400A   | 145.57        | -              | -           | -          | -      |      |               |                |                |                |        |   |   |
|              |                |               |                     |                |              |              |             | 6.00           | 8-RTG-12600A | 249.55         | -             | -              | -           | -          |        |      |               |                |                |                |        |   |   |
|              |                |               |                     |                |              |              |             | 2.425          | 10           | 2.00           | 10-RTG-12200A | 120.78         | -           | -          | -      |      |               |                |                |                |        |   |   |
|              |                |               |                     |                |              |              |             |                |              | 4.00           | 10-RTG-12400A | 210.47         | -           | -          | -      |      |               |                |                |                |        |   |   |
|              |                |               |                     |                |              |              |             |                |              | 2.00           | RTG-12200A    | 160.00         | RTG-12200CI | 255.99     | -      | -    |               |                |                |                |        |   |   |
|              |                |               |                     |                |              |              |             | 3.370          | 12           | 0.500          | 0.750         | 1/2            | 2.500       | 3.370      | 12     | 2.50 | RTG-12250A    | 162.50         | -              | -              | -      | - |   |
|              |                |               |                     |                |              |              |             |                |              |                |               |                |             |            |        | 3.00 | RTG-12300A    | 247.46         | -              | -              | -      | - |   |
|              |                |               |                     |                |              |              |             |                |              |                |               |                |             |            |        | 4.00 | RTG-12400A    | 272.00         | -              | -              | -      | - |   |
|              |                |               |                     |                |              |              |             |                |              |                |               |                |             |            |        | 5.00 | RTG-12500A    | 392.41         | -              | -              | -      | - |   |
|              |                |               |                     |                |              |              |             |                |              |                |               |                |             |            |        | 2.50 | 15-RTG-12250A | 392.31         | 15-RTG-12250CI | 447.98         | -      | - |   |
|              |                |               |                     |                |              |              |             |                |              |                |               |                |             |            |        | 4.00 | 15-RTG-12400A | 481.98         | -              | -              | -      | - |   |
|              |                |               |                     |                |              |              |             | 3.350          | 15           | 0.500          | 0.750         | 5/8            | 2.500       | 3.350      | 15     | 2.50 | 18-RTG-12250A | 499.84         | -              | -              | -      | - |   |
| 4.00         | 18-RTG-12400A  | 674.80        | -                   | -              | -            | -            |             |                |              |                |               |                |             |            |        |      |               |                |                |                |        |   |   |
| 2.50         | 21-RTG-12250A* | 719.47        | -                   | -              | -            | -            |             |                |              |                |               |                |             |            |        |      |               |                |                |                |        |   |   |
| 2.50         | 24-RTG-12250A  | 867.50        | -                   | -              | -            | -            |             |                |              |                |               |                |             |            |        |      |               |                |                |                |        |   |   |
| TI-50-5/8-25 | 12             | HEAVY DUTY    | 0.500               | 0.750          | 5/8          | 2.500        | 3.370       | 12             | 2.00         | RTG-12205A     | 177.32        | RTG-12205CI    | 255.99      | -          | -      |      |               |                |                |                |        |   |   |
|              |                |               |                     |                |              |              |             |                | 2.50         | RTG-12255A     | 193.15        | -              | -           | -          | -      |      |               |                |                |                |        |   |   |
|              |                |               |                     |                |              |              |             |                | 4.00         | RTG-12405A     | 332.26        | -              | -           | -          | -      |      |               |                |                |                |        |   |   |
|              |                |               |                     |                |              |              |             |                | 5.00         | RTG-12505A     | 392.41        | -              | -           | -          | -      |      |               |                |                |                |        |   |   |
|              |                |               |                     |                |              |              |             |                | 3.350        | 15             | 0.500         | 0.750          | 5/8         | 2.500      | 3.350  | 15   | 2.50          | 15-RTG-12255A  | 392.31         | 15-RTG-12255CI | 447.98 | - | - |
|              |                |               |                     |                |              |              |             |                |              |                |               |                |             |            |        |      | 4.00          | 15-RTG-12405A  | 481.98         | -              | -      | - | - |
|              |                |               |                     |                |              |              |             |                |              |                |               |                |             |            |        |      | 2.50          | 18-RTG-12255A  | 499.84         | -              | -      | - | - |
|              |                |               |                     |                |              |              |             |                |              |                |               |                |             |            |        |      | 4.00          | 18-RTG-12405A  | 674.80         | -              | -      | - | - |
|              |                |               |                     |                |              |              |             |                | 3.100        | 21             | 0.500         | 0.750          | 5/8         | 2.500      | 3.100  | 21   | 4.00          | 21-RTG-12405A* | 899.87         | -              | -      | - | - |
|              |                |               |                     |                |              |              |             |                |              |                |               |                |             |            |        |      | 4.00          | 21-RTG-12405A* | 899.87         | -              | -      | - | - |

Round Jaw Material: ALUMINUM-6061-T6 Bar Stock, CAST IRON-Gray, STEEL-1018. 18" & Larger- Aluminum Casting T6  
For complete list of applicable chucks, see pages 632-644. \* denotes non-stock item. Please allow 1 week manufacturing time.

**HARD JAWS**



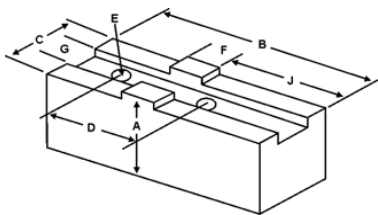
| Group        | Chuck Size | Type        | Critical Dimensions |                |              |              | Width Inch C | OAL Inch B | Height Inch A | No. of Holes | No. of Steps | Top Step Ht S1 | Mid Step Ht S2 | Bot Step Ht S3 | Part Number | Price Per Set | Code |
|--------------|------------|-------------|---------------------|----------------|--------------|--------------|--------------|------------|---------------|--------------|--------------|----------------|----------------|----------------|-------------|---------------|------|
|              |            |             | Groove Width G      | Tongue Width F | Screw Size E | Hole Space D |              |            |               |              |              |                |                |                |             |               |      |
| TI-50-1/2-21 | 10         | MEDIUM DUTY | 0.500               | 0.750          | 1/2          | 2.125        | 1.750        | 3.770      | 2.500         | 2            | 2            | 0.688          | 0.440          | 1.380          | TG-100HJ2   | \$333.33      | D    |
|              |            |             |                     |                |              |              | 1.389        | 4.034      | 2.063         | 2            | 2            | 0.551          | 0.551          | 0.961          | TG-100HJ2-U | \$285.00      | E    |
|              |            |             |                     |                |              |              | 1.750        | 3.920      | 2.469         | 2            | 2            | 0.650          | 0.650          | 1.169          | TG-100HJ2-X | \$300.00      | E    |
| TI-50-1/2-25 | 12         | MEDIUM DUTY | 0.500               | 0.750          | 1/2          | 2.500        | 1.750        | 4.500      | 2.500         | 2            | 2            | 0.680          | 0.440          | 1.380          | TG-120HJ2   | \$450.00      | D    |
|              |            |             |                     |                |              |              | 1.586        | 4.585      | 2.063         | 2            | 2            | 0.591          | 0.591          | 0.882          | TG-120HJ2-U | \$384.75      | E    |
|              |            |             |                     |                |              |              | 1.750        | 4.550      | 2.500         | 2            | 2            | 0.650          | 0.650          | 1.200          | TG-120HJ2-X | \$405.00      | E    |
| TI-50-5/8-25 | 12         | HVY DTY     | 0.500               | 0.750          | 5/8          | 2.500        | 1.750        | 4.550      | 2.500         | 2            | 2            | 0.650          | 0.650          | 1.200          | TG-125HJ2-X | \$435.00      | E    |

Call Us Today For All Of Your Machine Tool Needs!

# SOFT JAWS- AMERICAN STANDARD TONGUE & GROOVE

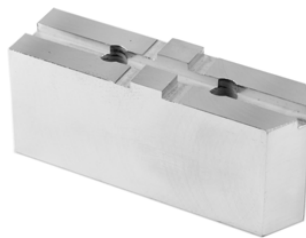
C

FOR USE ON: Amestra, Buck, Bison, BTC, Cushman, Huron, PBA, Yuasa, & Rohm Chucks



American Standard Tongue & Groove

**QUANTITY DISCOUNTS!**  
Order **5 SETS OR MORE** of the same part number soft jaw and receive a **5% DISCOUNT!**



LATHE CHUCKS  
LIVE CENTERS

WISE JAWS  
WISE ACCESSORIES

STRAIGHT SHANK  
COLLET HOLDERS

LATHE BUSHINGS  
DRILL CHUCKS

CARBIDE INSERTS  
THREADING/GROOVING

CUTTING TOOLS  
MACHINERY

PRECISION TOOLS  
DEBURRING

COOLANT/FLUIDS  
TOOL STORAGE

MADE IN THE USA

Critical Dimensions

ALUMINUM

STEEL

| Group No.    | Chuck Size | Type        | Groove Width G | Tongue Width F | Screw Size E | Hole Space D | Tongue to Front J | Tongue Position | Width Inch C | Length Inch B | Hght Inch A | FLAT END Part Number | Price Set Of 3 | FLAT END Part Number | Price Set Of 3 |
|--------------|------------|-------------|----------------|----------------|--------------|--------------|-------------------|-----------------|--------------|---------------|-------------|----------------------|----------------|----------------------|----------------|
| TI-50-1/2-21 | 10         | MEDIUM DUTY | 0.500          | 0.750          | 1/2          | 2.125        | 2.300             | Offset          | 1.500        | 4.500         | 2.00        | TG-10200AF           | 41.25          | TG-10200F            | 41.25          |
|              |            |             |                |                |              |              |                   |                 |              |               | 2.00        | TG-10200BF           | 61.55          | -                    | -              |
|              |            |             |                |                |              |              |                   |                 |              |               | 2.50        | TG-10250AF           | 48.65          | TG-10250F            | 51.55          |
|              |            |             |                |                |              |              |                   |                 |              |               | 3.00        | TG-10300AF           | 54.46          | TG-10300F            | 57.63          |
|              |            |             |                |                |              |              |                   |                 |              |               | 4.00        | TG-10400AF           | 60.25          | TG-10400F            | 60.25          |
|              |            |             |                |                |              |              | 2.000             | 4.500           | 2.00         | TG-10202AF    | 51.75       | TG-10202F            | 51.75          |                      |                |
|              |            |             |                |                |              |              |                   |                 | 3.00         | TG-10302AF    | 65.45       | TG-10302F            | 69.07          |                      |                |
|              |            |             |                |                |              |              |                   |                 | 2.00         | TG-10203AF    | 74.87       | TG-10203F            | 45.56          |                      |                |
|              |            |             |                |                |              |              |                   |                 | 3.00         | TG-10303AF    | 82.05       | TG-10303F            | 86.43          |                      |                |
|              |            |             |                |                |              |              |                   |                 | 4.00         | TG-10403AF    | 110.81      | TG-10403F            | 70.09          |                      |                |
| TI-50-5/8-21 | 10         | HEAVY DUTY  | 0.500          | 0.750          | 5/8          | 2.125        | 2.300             | Offset          | 1.750        | 4.500         | 2.00        | TG-10205AF           | 45.69          | TG-10205F            | 48.44          |
|              |            |             |                |                |              |              |                   |                 |              |               | 2.50        | TG-10255AF           | 52.74          | TG-10255F            | 55.80          |
|              |            |             |                |                |              |              |                   |                 |              |               | 3.00        | TG-10305AF           | 57.39          | TG-10305F            | 60.56          |
|              |            |             |                |                |              |              |                   |                 |              |               | 4.00        | TG-10405AF           | 69.10          | TG-10405F            | 72.69          |
|              |            |             |                |                |              |              |                   |                 |              |               | 2.00        | TG-10208AF*          | 39.69          | TG-10208F*           | 40.60          |
|              |            |             |                | Center         | Centered     | 1.750        | 3.938             | 4.00            | TG-10408AF*  | 89.64         | TG-10408F*  | 79.60                |                |                      |                |
|              |            |             |                |                |              |              |                   | 2.50            | TG-10259AF*  | 51.87         | TG-10259F*  | 45.29                |                |                      |                |
|              |            |             |                |                |              |              |                   | 3.50            | TG-10359AF*  | 72.60         | TG-10359F*  | 63.39                |                |                      |                |
|              |            |             |                |                |              |              |                   | 2.00            | TG-12200AF   | 51.53         | TG-12200F   | 53.28                |                |                      |                |
|              |            |             |                |                |              |              |                   | 2.50            | TG-12250AF   | 57.43         | TG-12250F   | 57.76                |                |                      |                |
| TI-50-5/8-21 | 10         | 10" W & S   | 0.500          | 0.750          | 5/8          | 2.125        | 2.125             | Offset          | 1.750        | 4.25          | 3.00        | TG-12300AF           | 66.13          | TG-12300F            | 69.76          |
|              |            |             |                |                |              |              |                   |                 |              |               | 4.00        | TG-12400AF           | 77.91          | TG-12400F            | 81.87          |
|              |            |             |                |                |              |              |                   |                 |              |               | 6.00        | TG-12600AF           | 180.06         | TG-12600F            | 191.36         |
|              |            |             |                |                |              |              |                   |                 |              |               | 2.00        | TG-12203AF           | 73.27          | TG-12203F            | 56.07          |
|              |            |             |                |                |              |              |                   |                 |              |               | 2.50        | TG-12253AF           | 86.23          | TG-12253F            | 91.49          |
|              |            |             |                |                |              |              |                   |                 |              |               | 3.00        | TG-12303AF           | 100.59         | TG-12303F            | 106.64         |
|              |            |             |                |                |              |              |                   |                 |              |               | 4.00        | TG-12403AF           | 115.33         | TG-12403F            | 116.73         |
|              |            |             |                |                |              |              |                   |                 |              |               | 2.50        | TG-12252AF           | 74.67          | TG-12252F            | 61.42          |
|              |            |             |                |                |              |              |                   |                 |              |               | 4.00        | TG-12402AF           | 110.81         | TG-12402F            | 116.76         |
|              |            |             |                |                |              |              |                   |                 |              |               | 6.00        | TG-12602AF           | 242.96         | TG-12602F            | 250.24         |
| TI-50-1/2-25 | 12         | MEDIUM DUTY | 0.500          | 0.750          | 1/2          | 2.500        | 2.900             | Offset          | 1.750        | 5.250         | 2.50        | TG-12258AF*          | 59.24          | TG-12258F*           | 65.62          |
|              |            |             |                |                |              |              |                   |                 |              |               | 4.00        | TG-12408AF*          | 71.02          | TG-12408F*           | 74.45          |
|              |            |             |                |                |              |              |                   |                 |              |               | 2.50        | TG-12259AF*          | 57.90          | TG-12259F*           | 61.27          |
|              |            |             |                |                |              |              |                   |                 |              |               | 4.00        | TG-12409AF*          | 89.16          | TG-12409F*           | 94.27          |
|              |            |             |                |                |              |              |                   |                 |              |               | 2.00        | TG-12205AF           | 54.35          | TG-12205F            | 57.45          |
|              |            |             |                | Center         | Centered     | 2.000        | 4.500             | 2.50            | TG-12255AF   | 60.69         | TG-12255F   | 60.90                |                |                      |                |
|              |            |             |                |                |              |              |                   | 3.00            | TG-12305AF   | 72.82         | TG-12305F   | 76.73                |                |                      |                |
|              |            |             |                |                |              |              |                   | 4.00            | TG-12405AF   | 79.66         | TG-12405F   | 83.39                |                |                      |                |
|              |            |             |                |                |              |              |                   | 2.50            | TG-12256AF   | 78.92         | TG-12256F   | 83.47                |                |                      |                |
|              |            |             |                |                |              |              |                   | 4.00            | TG-12406AF   | 110.81        | TG-12406F   | 116.76               |                |                      |                |
| TI-50-5/8-25 | 12         | 12" W & S   | 0.500          | 0.750          | 5/8          | 2.500        | 2.500             | Offset          | 1.750        | 4.875         | 2.50        | TG-12259AF*          | 57.90          | TG-12259F*           | 61.27          |
|              |            |             |                |                |              |              |                   |                 |              |               | 4.00        | TG-12409AF*          | 89.16          | TG-12409F*           | 94.27          |
| TI-50-5/8-25 | 12         | HEAVY DUTY  | 0.500          | 0.750          | 5/8          | 2.500        | 2.900             | Offset          | 2.000        | 5.250         | 2.00        | TG-12205AF           | 54.35          | TG-12205F            | 57.45          |
|              |            |             |                |                |              |              |                   |                 |              |               | 2.50        | TG-12255AF           | 60.69          | TG-12255F            | 60.90          |
|              |            |             |                |                |              |              |                   |                 |              |               | 3.00        | TG-12305AF           | 72.82          | TG-12305F            | 76.73          |
|              |            |             |                |                |              |              | 3.670             | Offset          | 2.000        | 6.000         | 4.00        | TG-12405AF           | 79.66          | TG-12405F            | 83.39          |
|              |            |             |                |                |              |              |                   |                 |              |               | 2.50        | TG-12256AF           | 78.92          | TG-12256F            | 83.47          |
|              |            |             |                |                |              |              |                   |                 |              |               | 4.00        | TG-12406AF           | 110.81         | TG-12406F            | 116.76         |

For "Pointed" Soft Jaws, please substitute "P" for "F" in the part number. Example: TG-10200AF will be TG-10200AP. Pointed Jaws: Up to 10" add \$3.25, 12" & over add \$6.50.  
Soft Jaw Material: ALUMINUM-6061-T6 Bar Stock, STEEL-1018, "B" JAWS-7075-T6 Aircraft Aluminum  
For complete list of applicable chucks, see pages 632-644. \* denotes non-stock item. Please allow 1 week manufacturing time.

## DIAL CALIPERS

- 4-way measuring
- Solid stainless steel construction
- Silky smooth movement throughout the entire range
- .100" range per revolution
- .001" reading dial face
- Supplied with inspection report and shop hardened case



**NEW ITEM!**



| Range | Dial Face | Jaw Length | Thumbwheel | Part Number | Price Each |
|-------|-----------|------------|------------|-------------|------------|
| 0-6"  | Black     | 1.6"       | Without    | BS-46789    | \$66.50    |
| 0-6"  | White     | 1.6"       | With       | BS-46790    | \$66.50    |
| 0-8"  | White     | 2"         | With       | BS-46791    | \$82.65    |
| 0-12" | White     | 2.5"       | With       | BS-46792    | \$111.15   |

Call Us Or Visit Our Website For Our Complete Selection!

2010-11 Master Catalog