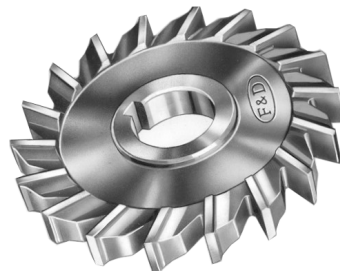


SIDE MILLING CUTTERS

STRAIGHT TOOTH SIDE MILLING CUTTERS

Largest and most varied range of sizes. Cutters can be ganged or used as straddle mills. Two different keyway locations permit interlocking. Cutters marked A & B will interlock when hubs are ground. Staggered tooth side milling cutters also available.



F&D
Full Line Available!
Please call for more information.

Countersinks • Counterbores • Arbors
Dies • Involute Gear Cutters • Spacers
Hollow Mills • Screw Extractors • Taps
Keyway Bushings • Die Stocks

Size	Face Width	Hole Dia	Part Number	Price Each
2-1/2"	1/4	7/8	FD-10707	\$42.79
	5/16	7/8	FD-10709	\$44.97
	3/8	7/8	FD-10711	\$48.18
	1/2	7/8	FD-10714	\$48.76
3"	3/16	1	FD-10718	\$46.84
	3/16	1-1/4	FD-10719	\$46.84
	7/32	1	FD-10720	\$59.22
	7/32	1-1/4	FD-10721	\$59.22
	1/4	1	FD-10722	\$44.17
	1/4	1-1/4	FD-10723	\$44.17
	9/32	1	FD-10724	\$63.27
	5/16	1	FD-10726	\$51.16
	5/16	1-1/4	FD-10727	\$51.16
	11/32	1	FD-10728	\$71.76
	3/8	1	FD-10730	\$55.54
	3/8	1-1/4	FD-10731	\$55.54
	13/32	1-1/4	FD-10733	\$72.77
	7/16	1	FD-10734	\$58.85
	1/2	1	FD-10736	\$56.34
	1/2	1-1/4	FD-10737	\$56.34
9/16	1	FD-10738	\$69.89	
9/16	1-1/4	FD-10739	\$69.89	
5/8	1	FD-10740	\$73.30	
5/8	1-1/4	FD-10741	\$73.30	
11/16	1	FD-10742	\$72.72	
11/16	1-1/4	FD-10743	\$72.72	
3/4	1	FD-10744	\$77.30	
3/4	1-1/4	FD-10745	\$77.30	
13/16	1-1/4	FD-10747	\$84.45	
7/8	1-1/4	FD-10749	\$92.72	
1	1-1/4	FD-10753	\$101.47	
4"	1/4	1	FD-10782	\$63.17
	1/4	1-1/4	FD-10783	\$76.82
	9/32	1	FD-10784	\$83.23
	9/32	1-1/4	FD-10785	\$83.23
	5/16	1	FD-10786	\$79.17
	5/16	1-1/4	FD-10787	\$79.17
	11/32	1	FD-10788	\$84.61
	11/32	1-1/4	FD-10789	\$84.61
	3/8	1	FD-10790	\$70.96
	3/8	1-1/4	FD-10791	\$87.39
	13/32	1	FD-10792	\$92.99
	13/32	1-1/4	FD-10793	\$92.99
	7/16	1	FD-10794	\$88.99
	7/16	1-1/4	FD-10795	\$88.99

Size	Face Width	Hole Dia	Part Number	Price Each
4"	1/2	1	FD-10798	\$79.65
	1/2	1-1/4	FD-10799	\$79.65
	9/16	1	FD-10800	\$96.40
	9/16	1-1/4	FD-10801	\$96.40
	5/8	1	FD-10802	\$91.34
	5/8	1-1/4	FD-10803	\$91.34
	11/16	1	FD-10804	\$105.79
	11/16	1-1/4	FD-10805	\$105.79
	3/4	1	FD-10806	\$98.86
	3/4	1-1/4	FD-10807	\$98.86
	13/16	1	FD-10808	\$111.71
	13/16	1-1/4	FD-10809	\$111.71
	7/8	1	FD-10810	\$108.57
	7/8	1-1/4	FD-10811	\$108.57
	1	1	FD-10814	\$136.84
	1	1-1/4	FD-10815	\$136.84
5"	1/4	1	FD-10832	\$103.50
	1/4	1-1/4	FD-10833	\$103.50
	9/32	1-1/4	FD-10835	\$111.61
	5/16	1	FD-10836	\$105.37
	5/16	1-1/4	FD-10837	\$105.37
	11/32	1-1/4	FD-10839	\$112.09
	3/8	1	FD-10840	\$112.73
	3/8	1-1/4	FD-10841	\$112.73
	13/32	1-1/4	FD-10843	\$119.72
	7/16	1	FD-10844	\$121.32
	7/16	1-1/4	FD-10845	\$121.32
	1/2	1	FD-10848	\$108.67
	1/2	1-1/4	FD-10849	\$108.67
	9/16	1-1/4	FD-10851	\$134.60
	5/8	1-1/4	FD-10853	\$120.25
	11/16	1-1/4	FD-10855	\$142.76
3/4	1-1/4	FD-10857	\$136.58	
13/16	1-1/4	FD-10859	\$153.17	
7/8	1-1/4	FD-10861	\$179.10	
1	1-1/4	FD-10865	\$163.41	
6"	1/4	1	FD-10884	\$127.19
	1/4	1-1/4	FD-10885	\$127.19
	9/32	1	FD-10886	\$136.26
	9/32	1-1/4	FD-10887	\$141.75
	5/16	1	FD-10888	\$140.36
	5/16	1-1/4	FD-10889	\$145.97
	11/32	1-1/4	FD-10891	\$155.73
	3/8	1	FD-10892	\$150.29
	3/8	1-1/4	FD-10893	\$156.26

Size	Face Width	Hole Dia	Part Number	Price Each
6"	13/32	1-1/4	FD-10895	\$164.85
	7/16	1	FD-10896	\$155.30
	7/16	1-1/4	FD-10897	\$158.72
	15/32	1-1/4	FD-10899	\$152.26
	1/2	1	FD-10900	\$139.88
	1/2	1-1/4	FD-10901	\$139.88
	9/16	1-1/4	FD-10903	\$169.55
	5/8	1-1/4	FD-10905	\$153.65
	11/16	1-1/4	FD-10907	\$185.66
	3/4	1-1/4	FD-10909	\$180.38
	13/16	1-1/4	FD-10911	\$199.58
	7/8	1-1/4	FD-10913	\$206.14
	1	1-1/4	FD-10917	\$212.71
	3/8	1-1/4	FD-10933	\$308.79
	7/16	1-1/4	FD-10934	\$324.05
	1/2	1-1/4	FD-10935	\$326.24
8"	9/16	1-1/4	FD-10936	\$346.03
	5/8	1-1/4	FD-10937	\$363.31
	11/16	1-1/4	FD-10938	\$391.80
	3/4	1-1/4	FD-10939	\$321.59
	13/16	1-1/4	FD-10940	\$409.25
	7/8	1-1/4	FD-10941	\$426.80
	1	1-1/4	FD-10943	\$400.29
	10"	1/4	1-1/2	FD-10957
3/8		1-1/2	FD-10959	\$572.13
7/16		1-1/2	FD-10960	\$604.03
1/2		1-1/2	FD-10961	\$631.66
9/16		1-1/2	FD-10962	\$654.44
5/8		1-1/2	FD-10963	\$558.79
11/16		1-1/2	FD-10964	\$707.21
3/4		1-1/2	FD-10965	\$720.55
13/16		1-1/2	FD-10966	\$740.55
7/8		1-1/2	FD-10967	\$762.85
1		1-1/2	FD-10969	\$815.83
12"		3/8	1-1/2	FD-10972
	7/16	1-1/2	FD-10973	\$764.56
	1/2	1-1/2	FD-10974	\$798.65
	9/16	1-1/2	FD-10975	\$846.66
	5/8	1-1/2	FD-10976	\$847.73
	11/16	1-1/2	FD-10977	\$883.32
	3/4	1-1/2	FD-10978	\$899.37
	13/16	1-1/2	FD-10979	\$928.98
	7/8	1-1/2	FD-10980	\$954.11
	1	1-1/2	FD-10982	\$1,020.32

Staggered Tooth Side Milling Cutters Also Available! Please Call For More Information!

Call Us Today For All Of Your Machine Tool Needs!

SIDE MILLING CUTTERS

B

CARBIDE TIPPED SLITTING SAWS

Designed specifically for use in stainless steels and associated alloys of this metal grouping. Plain tooth for stainless steel.



Dia.	Face Width	Arbor Hole	Part Number	Price Each
3"	3/32	1"	FD-12083B	\$154.25
	1/8	1"	FD-12083C	\$159.85
	3/16	1"	FD-12083D	\$166.70
	3/32	1"	FD-12083H	\$221.80
4"	1/2	1"	FD-12083J	\$224.85
	3/16	1"	FD-12083K	\$228.40
	3/32	1"	FD-12083P	\$302.00
5"	1/8	1"	FD-12083Q	\$308.10
	3/16	1"	FD-12083R	\$319.90
	1/8	1-1/4	FD-12083S	\$360.70
6"	3/16	1-1/4	FD-12083T	\$370.60
	1/4	1-1/4	FD-12083U	\$376.00

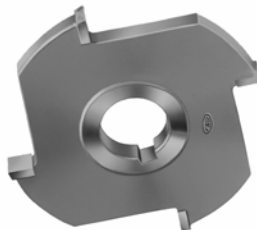


Countersinks • Counterbores • Arbors Dies • Involute Gear Cutters • Spacers Hollow Mills • Screw Extractors • Taps Keyway Bushings • Die Stocks



CARBIDE TIPPED SIDE MILLING CUTTERS

- Ideal for steels
- Made from hardened tool steel with precision ground hubs and bores
- Brazed-on carbide tips can be resharpened
- Made in USS



Dia.	Face Width	Arbor Hole	Part Number	Price Each
3"	1/4	1"	FD-12084	\$147.10
	5/16	1"	FD-12085	\$148.45
	3/8	1"	FD-12086	\$149.85
	1/2	1"	FD-12088	\$168.25
4"	1/4	1"	FD-12089	\$171.45
	5/16	1"	FD-12090	\$189.00
	3/8	1"	FD-12091	\$206.95
	3/8	1-1/4	FD-12092	\$206.95
	1/2	1"	FD-12094	\$220.15
	1/2	1-1/4	FD-12095	\$220.15
5"	5/8	1"	FD-12097	\$234.75
	5/8	1-1/4	FD-12098	\$234.75
	1/2	1"	FD-12100	\$275.95
	1/2	1-1/4	FD-12101	\$275.95
6"	5/8	1-1/4	FD-12103	\$293.85
	1/2	1"	FD-12104	\$309.55
	1/2	1-1/4	FD-12105	\$309.55
	5/8	1-1/4	FD-12106	\$319.50

CONVEX & CONCAVE MILLING CUTTERS



Convex Cutter



Concave Cutter

CONVEX					
Radius	Shank	OAL	Cut. Dia	Part Number	Price Each
1/32	1/2	3	3/4	FD-12451-C601	\$82.20
1/16	1/2	3	3/4	FD-12452-C602	\$82.20
3/32	1/2	3	7/8	FD-12453-C603	\$83.40
1/8	3/4	3-1/2	1-1/4	FD-12454-C604	\$86.55
5/32	3/4	3-1/2	1-5/16	FD-12455-C605	\$94.00
3/16	3/4	3-1/2	1-3/8	FD-12456-C606	\$97.25
1/4	3/4	4	1-1/2	FD-12457-C607	\$108.05
5/16	3/4	4	1-5/8	FD-12458-C608	\$140.40
3/8	3/4	4	1-3/4	FD-12459-C609	\$140.75

CONCAVE			
OAL	Cut. Dia	Part Number	Price Each
3	3/4	FD-12476-C701	\$73.60
3	3/4	FD-12477-C702	\$73.60
3	3/4	FD-12478-C703	\$73.60
3-1/2	1	FD-12479-C704	\$86.55
3-1/2	1	FD-12480-C705	\$91.85
3-1/2	1	FD-12481-C706	\$110.20
4	1-1/4	FD-12482-C707	\$113.45
4	1-1/4	FD-12483-C708	\$124.20
4-3/16	1-1/2	FD-12484-C709	\$145.75

HSS SHELL ENDMILLS

Right Hand



M-42 COBALT SHELL ENDMILLS

Right Hand



General Purpose



For Aluminum Coarse Tooth



Heavy Duty



Roughing/Heavy Duty Round Tooth

Cutter Dia.	Face Width	Hole Dia	General Purpose		For Aluminum	
			Part Number	Price Each	Part Number	Price Each
1-1/4"	1	1/2	FD-14496	\$56.10	FD-14586	\$62.80
1-1/2"	1-1/8	1/2	FD-14500	\$57.85	FD-14590	\$64.40
1-3/4"	1-1/4	3/4	FD-14504	\$73.70	FD-14594	\$78.00
2"	1-3/8	3/4	FD-14508	\$82.80	FD-14598	\$87.85
2-1/4"	1-1/2	1	FD-14512	\$91.05	FD-14602	\$101.35
2-1/2"	1-5/8	1	FD-14516	\$109.25	FD-14606	\$117.45
2-3/4"	1-5/8	1	FD-14520	\$136.30	FD-14610	\$149.20
3"	1-3/4	1-1/4	FD-14524	\$148.00	FD-14614	\$160.80
3-1/2"	1-7/8	1-1/4	FD-14528	\$205.05	FD-14618	\$237.00
4"	2-1/4	1-1/2	FD-14532	\$248.00	FD-14622	\$257.60
4-1/2"	2-1/4	1-1/2	FD-14534	\$317.65	FD-14624	\$414.40
5"	2-1/4	1-1/2	FD-14536	\$403.05	FD-14626	\$435.35
6"	2-1/4	2	FD-14540	\$594.05	FD-14630	\$634.15

Cutter Dia	Face Width	Hole Dia	Part Number	Price Each
1-1/4"	1	1/2	FD-14542	\$74.35
1-1/2"	1-1/8	1/2	FD-14546	\$76.95
2"	1-3/8	3/4	FD-14451	\$111.05
2-1/2"	1-5/8	1	FD-14453	\$147.45
2-3/4"	1-5/8	1	FD-14562	\$183.95
3"	1-3/4	1-1/4	FD-14455	\$200.50
3-1/2"	1-7/8	1-1/4	FD-14568	\$278.55
4"	2-1/4	1-1/2	FD-14457	\$340.25
4-1/2"	2-1/4	1-1/2	FD-14572	\$551.50
5"	2-1/4	1-1/2	FD-14459	\$551.95
6"	2-1/4	2	FD-14576	\$812.80

Cutter Dia	Face Width	Hole Dia	Part Number	Price Each
2"	1-3/8	3/4	FD-35100	\$149.85
2-1/4"	1-1/2	1	FD-35101	\$182.35
2-1/2"	1-5/8	1	FD-35102	\$221.80
2-3/4"	1-5/8	1	FD-35103	\$246.60
3"	1-3/4	1-1/4	FD-35104	\$287.45
3-1/2"	1-7/8	1-1/4	FD-35105	\$360.85
4"	2-1/4	1-1/2	FD-35106	\$501.70
4-1/2"	2-1/4	1-1/2	FD-35107	\$635.35
5"	2-1/4	1-1/2	FD-35108	\$737.75
6"	2-1/4	2	FD-35109	\$1,024.85

Full Line Available!
Please call for more information.

Call Us Or Visit Our Website For Our Complete Selection!

2010-11 Master Catalog

467

LATHES CHUCKS
LIVE CENTERS

VICE JAWS
VICE ACCESSORIES

STRAIGHT SHANK
COLLET HOLDERS

LATHES BUSHINGS
DRILL CHUCKS

CARBIDE INSERTS
THREADING/GROOVING

CUTTING TOOLS
MACHINERY

PRECISION TOOLS
DEBURRING

COOLANT/LUIDS
TOOL STORAGE