

SLITTING SAWS

PLAIN METAL SLITTING SAWS

Designed For General Slotting Or Cut-off Operations

FEATURES:

- 10 degree positive rake angle on all blades
- Available with flat and parallel hubs for gang slitting as a Special Order.
- Available in variety of tooth modifications.
- Closer dimensional tolerances supplied as a Special Order.



METAL SLITTING SAWS SIDE CHIP CLEARANCE

FEATURES:

- Designed for deep cuts or slots where side cutting chip clearance is a factor
- Free cutting blades do not bind in deep cutting.
- For deep slotting applications, supplied with ground recess between bottom of side tooth and hub.
- 10 degree positive rake angle standard



Cutting Dia	Face Width	Arbor Hole	No. Teeth	Part Number	Price Each
1-1/4	1/32	1/2	28	TU-I-010	6.72
	1/16	1/2	28	TU-I-011	7.09
1-1/2	1/32	1/2	32	TU-I-012	7.72
	1/16	1/2	26	TU-I-013	8.03
	3/32	1/2	26	TU-I-014	8.93
	1/8	1/2	26	TU-I-015	10.82
1-3/4	1/32	1/2	34	TU-I-016	9.45
	1/16	1/2	30	TU-I-017	9.66
	3/32	1/2	30	TU-I-018	10.40
	1/8	1/2	30	TU-I-019	12.34
2	1/32	1/2	38	TU-I-020	9.61
	1/16	1/2	34	TU-I-021	9.92
	3/32	1/2	34	TU-I-022	11.97
	1/8	1/2	34	TU-I-023	13.28
	5/32	1/2	34	TU-I-024	14.96
	3/16	1/2	34	TU-I-024A	21.84
2-1/2	1/32	7/8	28	TU-I-025	12.23
	3/64	7/8	28	TU-I-026	12.60
	1/16	7/8	28	TU-I-027	13.13
	3/32	7/8	28	TU-I-028	13.97
	1/8	7/8	28	TU-I-029	15.07
	3/16	7/8	28	TU-I-030	24.94
3	1/32	1	30	TU-I-031	14.96
	3/64	1	30	TU-I-032	15.23
	1/16	1	30	TU-I-033	15.49
	3/32	1	30	TU-I-034	17.12

Cutting Dia	Face Width	Arbor Hole	No. Teeth	Part Number	Price Each
3	1/8	1	30	TU-I-035	18.38
	5/32	1	30	TU-I-036	22.68
	3/16	1	30	TU-I-036A	32.34
4	1/32	1	36	TU-I-037	19.32
	3/64	1	36	TU-I-038	19.85
	1/16	1	36	TU-I-039	20.32
	3/32	1	36	TU-I-040	23.57
	1/8	1	36	TU-I-041	27.30
	5/32	1	36	TU-I-042	38.64
	3/16	1	36	TU-I-043	45.15
5	1/16	1	40	TU-I-044	27.83
	3/32	1	40	TU-I-045	32.55
	1/8	1	40	TU-I-046	38.33
	1/8	1-1/4	40	TU-I-047	38.85
	5/32	1	40	TU-I-049	51.45
	3/16	1	40	TU-I-050	69.30
	6	1/16	1	42	TU-I-051
3/32		1	42	TU-I-052	44.05
1/8		1	42	TU-I-053	55.65
1/8		1-1/4	42	TU-I-054	55.65
3/16		1	42	TU-I-055	97.65
3/16		1-1/4	42	TU-I-055A	97.65
8		1/8	1	46	TU-I-062
	1/8	1-1/4	46	TU-I-063	131.25
	3/16	1-1/4	46	TU-I-064	177.45

Cutting Dia	Face Width	Arbor Hole	No. Teeth	Part Number	Price Each
2 1/2	1/16	7/8	26	TU-I-074	38.80
	3/32	7/8	26	TU-I-075	38.38
	1/8	7/8	26	TU-I-076	43.84
	3/16	7/8	26	TU-I-076A	46.57
3	1/16	1	28	TU-I-077	45.83
	3/32	1	28	TU-I-078	45.52
	1/8	1	28	TU-I-079	51.98
	5/32	1	28	TU-I-080	54.23
	3/16	1	28	TU-I-080A	60.64
4	1/16	1	34	TU-I-081	59.80
	3/32	1	34	TU-I-082	59.80
	1/8	1	34	TU-I-083	70.40
	5/32	1	34	TU-I-084	75.23
	3/16	1	34	TU-I-085	77.81
5	1/16	1	38	TU-I-086	74.50
	3/32	1	38	TU-I-087	75.92
	1/8	1	38	TU-I-088	89.78
	1/8	1-1/4	38	TU-I-089	89.78
	5/32	1	38	TU-I-090	101.59
6	3/16	1	38	TU-I-091	105.84
	1/16	1	40	TU-I-092	90.30
	3/32	1	40	TU-I-093	97.18
	1/8	1	40	TU-I-094	113.66
	1/8	1-1/4	40	TU-I-095	113.66
	3/16	1	40	TU-I-096	140.18
	3/16	1-1/4	40	TU-I-097	140.18

SAW ARBORS

"STANDARD PRECISION" For Slitting / Sawing Applications
 "GOLD SERIES" For Grinding/ Slitting/ Sawing Applications

"Standard Precision" Features:

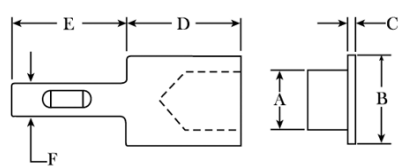
- General purpose arbor
- Vibra-core Design
- Lowest Profile Caps
- Accurate general purpose arbor
- Hardened and ground
- Deep sleeve design gives extra support and less cutter slippage
- Low profile caps and longer reaches
- Weldon shanks
- Wooden stand



Buy The Set & Save!!!

"Gold Series" Features:

- Ultra precision arbor
- Engineered for carbide cutters
- Higher RPM'S & accuracy
- Vibra-core* design
- Deep low profile caps gives extra support and less vibration
- Heat treated and ground to .0004 concentricity and square



Arbor Sets	Part Number	Price Set of 3
G.P. .250, .375, .500	SIE-SA-3S	\$88.51
G.P. .625, 1.000, 1.250	SIE-SA-3L	\$113.83
Gold .250, .375, .500	SIE-GSSA-3S	\$314.94
Gold .625, 1.000, 1.250	SIE-GSSA-3L	\$422.96

Shank F	A	B	C	D	E	Standard Precision Arbors	Price Each	Gold Series Arbors	Price Each
.500	.250	.500	.080	1.000		SIE-SA-250	\$33.14	SIE-GSSA-250	\$102.13
	.375	.625	.080	1.180		SIE-SA-375	\$34.71	SIE-GSSA-375	\$117.87
	.500	.750	.095	1.370		SIE-SA-500	\$36.25	SIE-GSSA-500	\$131.78
.750	.625	1.000	.122	1.500		SIE-SA-625	\$39.91	SIE-GSSA-625	\$140.03
	1.000	1.500	.160	1.750	2.030	SIE-SA-1000	\$45.95	SIE-GSSA-1000	\$164.09
	1.250	1.750	.220	2.000		SIE-SA-1250	\$46.85	SIE-GSSA-1250	\$172.08

Call Us Today For All Of Your Machine Tool Needs!

CHUCK JAWS
LATHE WORKHOLDING

MACHINE VISES
MAGNETIC CHUCKS

RETENTION KNOBS
ER, DA, TG COLLETS

TOOLHOLDERS
TAP HOLDERS

INDEXABLE DRILLS
TURNING & BORING

ENDMILLS, DRILLS
TAPS & REAMERS

ABRASIVES
MEASURING TOOLS

MRO & SAFETY
FLAT STOCK/DRILL ROD

SLITTING SAWS

B

CUTTING SAWS

Designed for cutting aluminium, brass, soft metals, and plastic in form of tubing, sheets and night extruded rods, bars and shapes.

FEATURES:

- High speed steel and hardened ground.
- Side ground with clearance to hole.
- Teeth ground on face- designed for soft materials.
- Plus ground up sharp- with no land on top.



Cutting Dia	Thick	Arbor Hole	No. Teeth	Speed RPM	Part Number	Price Each	
2"	0.020	1/2	72	6000	TU-I-287	7.82	
	0.030	1/2	60	6000	TU-I-288	7.82	
	0.040	1/2	50	6000	TU-I-289	8.19	
	0.050	1/2	36	6000	TU-I-290	9.35	
3"	0.020	1/2	110	6000	TU-I-291	9.19	
	0.020	1	110	6000	TU-I-291-1	9.19	
	0.030	1/2	90	6000	TU-I-292	9.50	
	0.030	1	90	6000	TU-I-292-1	9.50	
	0.040	1/2	70	6000	TU-I-293	10.45	
	0.040	1	70	6000	TU-I-293-1	10.45	
	0.050	1/2	40	6000	TU-I-293A	13.97	
4"	0.020	1/2	150	4800	TU-I-294	16.07	
	0.020	1	150	4800	TU-I-294-1	16.07	
	0.030	1/2	130	4800	TU-I-295	16.43	
	0.030	1	130	4800	TU-I-295-1	16.43	
	0.040	1/2	100	4800	TU-I-296	17.43	
	0.040	1	100	4800	TU-I-296-1	17.43	
	0.050	1/2	50	4800	TU-I-296A	18.22	
	0.050	1	50	4800	TU-I-296A-1	18.22	
	5"	0.020	1/2	190	3750	TU-I-297	23.36
		0.020	1	190	3750	TU-I-297-1	23.36
0.030		1/2	160	3750	TU-I-298	23.99	
0.030		1	160	3750	TU-I-298-1	23.99	
0.040		1/2	130	3750	TU-I-299	25.99	
0.040		1	130	3750	TU-I-299-1	25.99	
0.050		1/2	64	3750	TU-I-299A	30.19	
0.050		1	64	3750	TU-I-299A-1	30.19	
6"		0.020	1/2	224	3180	TU-I-300	39.64
		0.020	1	224	3180	TU-I-300-1	39.64
	0.020	5/8	224	3180	TU-I-300-5	39.64	
	0.035	1/2	190	3180	TU-I-301	37.54	
	0.035	1	190	3180	TU-I-301-1	37.54	
	0.035	5/8	190	3180	TU-I-301-5	37.54	
	0.050	1/2	110	3180	TU-I-302	44.10	
	0.050	1	110	3180	TU-I-302-1	44.10	
	0.050	5/8	110	3180	TU-I-302-5	44.10	
	0.050	1/2	72	3180	TU-I-302A	44.10	
7"	0.020	1	260	2720	TU-I-303-1	60.90	
	0.020	5/8	260	2720	TU-I-303-5	60.90	
	0.035	1	224	2720	TU-I-304-1	58.54	
	0.035	5/8	224	2720	TU-I-304-5	58.54	
	0.050	1	130	2720	TU-I-305-1	59.59	
	0.050	5/8	130	2380	TU-I-305-5	59.59	
8"	0.035	1/2	250	2380	TU-I-306	70.35	
	0.035	1	250	2380	TU-I-306-1	70.35	
	0.035	5/8	250	2380	TU-I-306-5	70.35	
	0.050	1	200	2380	TU-I-307-1	72.45	
	0.050	5/8	200	2380	TU-I-307-5	72.45	
	0.065	1	100	2380	TU-I-308-1	89.25	
	0.065	5/8	100	2380	TU-I-308-5	89.25	
	0.065	1	200	2380	TU-I-309-1	89.25	

Sizes And Dimensions Not Listed Are Special - Pricing On Request.

STANDARD KEYWAY FOR SAWS

ALSO AVAILABLE

Please Call For More Information

STANDARD SCREW SLOTTING SAW

Designed For Shallow Slotting Cuts



THURSTON



FEATURES:

- **Not** recommended for deep cuts.
- Teeth ground - not milled to ensure blades run "true-concentric."
- Concave ground sides insure proper side relief.
- Available with any number of teeth - special order.
- Closer dimensional tolerances and tooth modifications available.

Cutting Dia	Face Width	Arbor Hole	No. Teeth	Part Number	Price Each	Cutting Dia	Face Width	Arbor Hole	No. Teeth	Part Number	Price Each		
2-3/4"	0.182	1	72	TU-J-016	27.30	2-3/4"	0.020	1	72	TU-J-035	7.04		
	0.182	1	44	TU-J-016-4	27.30		0.018	1	72	TU-J-036	7.61		
	0.182	1	56	TU-J-016-5	27.30		0.016	1	72	TU-J-037	8.03		
	0.162	1	72	TU-J-017	25.99		0.014	1	72	TU-J-038	8.66		
	0.162	1	44	TU-J-017-4	25.99		0.013	1	72	TU-J-039	8.66		
	0.162	1	56	TU-J-017-5	25.99		0.010	1	72	TU-J-040	9.82		
	0.144	1	72	TU-J-018	20.74		0.008	1	72	TU-J-041	11.50		
	0.144	1	44	TU-J-018-4	20.74		0.006	1	72	TU-J-042	14.18		
	0.144	1	56	TU-J-018-5	20.74		2-1/4"	0.102	5/8	60	TU-J-043	12.55	
	2-3/4"	0.128	1	72	TU-J-019			16.49	0.091	5/8	60	TU-J-044	11.97
0.128		1	44	TU-J-019-4	16.49	0.081		5/8	60	TU-J-045	11.03		
0.128		1	56	TU-J-019-5	16.49	0.072		5/8	60	TU-J-046	10.82		
0.114		1	72	TU-J-020	15.86	0.064		5/8	60	TU-J-047	9.24		
0.114		1	44	TU-J-020-4	15.86	0.057		5/8	60	TU-J-048	9.24		
0.114		1	56	TU-J-020-5	15.86	0.051		5/8	60	TU-J-049	8.14		
0.102		1	72	TU-J-021	14.91	0.045		5/8	60	TU-J-050	8.14		
0.102		1	44	TU-J-021-4	14.91	0.040		5/8	60	TU-J-051	7.72		
0.102		1	56	TU-J-021-5	14.91	0.036		5/8	60	TU-J-052	7.72		
2-3/4"		0.091	1	72	TU-J-022	14.33	2-1/4"	0.032	5/8	60	TU-J-053	7.72	
	0.091	1	44	TU-J-022-4	14.33	0.028		5/8	60	TU-J-054	7.72		
	0.091	1	56	TU-J-022-5	14.33	0.025		5/8	60	TU-J-055	7.09		
	0.081	1	72	TU-J-023	13.39	0.023		5/8	60	TU-J-056	7.09		
	0.081	1	44	TU-J-023-4	13.39	0.020		5/8	60	TU-J-057	7.09		
	0.081	1	56	TU-J-023-5	13.39	0.018		5/8	60	TU-J-058	6.67		
	0.072	1	72	TU-J-024	13.28	0.016		5/8	60	TU-J-059	7.46		
	0.072	1	44	TU-J-024-4	13.28	0.014		5/8	60	TU-J-060	7.72		
	0.072	1	56	TU-J-024-5	13.28	0.013		5/8	60	TU-J-061	7.72		
	2-3/4"	0.064	1	72	TU-J-025	10.76		1-3/4"	0.010	5/8	60	TU-J-062	9.14
0.064		1	44	TU-J-025-4	10.76	0.008	5/8		60	TU-J-063	11.97		
0.064		1	56	TU-J-025-5	10.76	0.006	5/8		60	TU-J-064	12.34		
0.057		1	72	TU-J-026	10.24	2-3/4"	0.064		5/8	90	TU-J-065	8.66	
0.057		1	44	TU-J-026-4	10.24		0.057		5/8	90	TU-J-066	7.82	
0.057		1	56	TU-J-026-5	10.24		0.051		5/8	90	TU-J-067	6.83	
0.051		1	72	TU-J-027	9.71		0.045		5/8	90	TU-J-068	6.83	
0.051		1	44	TU-J-027-4	9.71		0.040		5/8	90	TU-J-069	6.83	
0.051		1	56	TU-J-027-5	9.71		0.036		5/8	90	TU-J-070	6.83	
2-3/4"		0.045	1	72	TU-J-028		9.19		1-3/4"	0.032	5/8	90	TU-J-071
	0.045	1	44	TU-J-028-4	9.19		0.028	5/8		90	TU-J-072	6.41	
	0.045	1	56	TU-J-028-5	9.19		0.025	5/8		90	TU-J-073	6.41	
	0.040	1	72	TU-J-029	8.03		0.023	5/8		90	TU-J-074	6.41	
	0.040	1	44	TU-J-029-4	8.03	2-3/4"	0.020	5/8		90	TU-J-075	6.41	
	0.040	1	56	TU-J-029-5	8.03		0.018	5/8		90	TU-J-076	6.56	
	0.036	1	72	TU-J-030	8.03		0.016	5/8		90	TU-J-077	6.93	
	0.036	1	44	TU-J-030-4	8.03		0.014	5/8		90	TU-J-078	6.93	
	0.036	1	56	TU-J-030-5	8.03		0.013	5/8		90	TU-J-079	6.93	
	2-3/4"	0.032	1	72	TU-J-031		8.03	1-3/4"		0.010	5/8	90	TU-J-080
0.028		1	72	TU-J-032	7.04		0.008		5/8	90	TU-J-081	8.51	
0.025		1	72	TU-J-033	7.04		0.006		5/8	90	TU-J-082	8.93	
2-3/4"		0.023	1	72	TU-J-034		7.04						

SLITTING ARBORS

FEATURES:

- Rust resistant black oxide finish on SSA-500.
- R8 & Straight Shank.
- Spring load.
- Mechanism readily accepts saw blade with hole diameter from 1/2" to 1".
- Blades are firmly secured in position with a hex screw.



SSA-500



SSA-800

BEST VALUE

Arbor Dia	Length	Weight	Part Number	Price Each
1/2"	2-9/16"	0.37 lbs	SSA-500	\$8.75
R-8	5-3/32"	2.00 lbs	SSA-800	\$13.25

Call Us Or Visit Our Website For Our Complete Selection!

2010-11 Master Catalog

469

LATHES CHUCKS
LIVE CENTERS

VICE ACCESSORIES
VICE JAWS

STRAIGHT SHANK
COLLET HOLDERS

LATHES BUSHINGS
DRILL CHUCKS

CARBIDE INSERTS
THREADING/GROOVING

CUTTING TOOLS
MACHINERY

PRECISION TOOLS
DEBURRING

COOLANT/FLUIDS
TOOL STORAGE

SLOTING SAWS

JEWELER'S SLOTING SAW

Designed for slotting thin material requiring light delicate cuts such as wire, thin tubing and extrusions



FEATURES:

- All teeth ground - not milled- for best concentricity.
- Concave ground sides insure proper side relief.
- Large hole sizes suggested to reduce deflection.

Cutter Dia	Thick ness	Arbor Hole	No. of Teeth	Part Number	Price Each	
1"	0.032	3/8	80	TU-301	4.15	
	0.028	3/8	80	TU-1	4.15	
	0.025	3/8	80	TU-2	3.83	
	0.023	3/8	80	TU-3	3.83	
	0.020	3/8	80	TU-4	3.83	
	0.018	3/8	80	TU-5	3.83	
	0.016	3/8	80	TU-6	4.15	
	0.014	3/8	80	TU-7	4.15	
	0.012	3/8	90	TU-8	4.15	
	0.010	3/8	90	TU-10	4.15	
	0.008	3/8	90	TU-12	4.88	
	0.006	3/8	90	TU-14	6.04	
	0.004	3/8	90	TU-14A	11.08	
	1-1/4"	0.032	3/8	100	TU-313	4.46
0.028		3/8	100	TU-314	4.46	
0.025		3/8	100	TU-315	4.36	
0.023		3/8	100	TU-316	4.36	
0.020		3/8	100	TU-317	4.31	
0.018		3/8	100	TU-318	4.46	
0.016		3/8	100	TU-319	4.46	
0.014		3/8	100	TU-320	4.83	
0.012		3/8	120	TU-321	4.83	
0.010		3/8	120	TU-322	5.09	
0.008		3/8	120	TU-323	5.78	
0.006		3/8	120	TU-324	7.09	
0.004		3/8	120	TU-325	12.08	
1-1/2"		0.032	1/2	110	TU-15	5.36
		0.028	1/2	110	TU-16	4.52
	0.025	1/2	110	TU-17	4.52	
	0.023	1/2	110	TU-18	4.52	
	0.020	1/2	110	TU-19	4.83	
	0.018	1/2	110	TU-20	5.09	
	0.016	1/2	110	TU-21	5.20	
	0.014	1/2	110	TU-22	5.46	
	0.012	1/2	140	TU-23	5.46	
	0.010	1/2	140	TU-25	6.51	
1-3/4"	0.008	1/2	140	TU-27	6.88	
	0.006	1/2	140	TU-29	7.51	
	0.032	1/2	130	TU-36	7.09	
	0.028	1/2	130	TU-37	5.09	
	0.025	1/2	130	TU-38	4.83	
	0.023	1/2	130	TU-39	4.83	
	0.020	1/2	130	TU-40	5.20	
	0.018	1/2	130	TU-41	5.31	
	0.016	1/2	130	TU-42	5.57	
	0.014	1/2	130	TU-43	5.93	
2"	0.012	1/2	160	TU-44	5.93	
	0.010	1/2	160	TU-46	6.88	
	0.008	1/2	160	TU-48	7.56	
	0.006	1/2	160	TU-50	8.30	
	0.057	1/2	110	TU-52	7.93	
	0.051	1/2	110	TU-53	7.93	
	0.045	1/2	110	TU-54	7.19	
	0.040	1/2	110	TU-55	7.19	
	0.035	1/2	110	TU-56	6.56	

Cutter Dia	Thick ness	Arbor Hole	No. of Teeth	Part Number	Price Each	
2"	0.032	1/2	110	TU-57	6.56	
	0.028	1/2	150	TU-58	6.09	
	0.025	1/2	150	TU-59	6.09	
	0.023	1/2	150	TU-60	6.09	
	0.020	1/2	150	TU-61	6.09	
	0.018	1/2	150	TU-62	6.51	
	0.016	1/2	150	TU-63	7.19	
	0.014	1/2	150	TU-64	7.61	
	0.012	1/2	190	TU-65	7.61	
	0.010	1/2	190	TU-67	7.93	
	0.008	1/2	190	TU-69	9.19	
	0.006	1/2	190	TU-71	9.82	
	2-1/2"	0.057	1/2	140	TU-73	9.82
		0.051	1/2	140	TU-74	9.82
0.045		1/2	140	TU-75	9.03	
0.040		1/2	140	TU-76	9.03	
0.035		1/2	140	TU-77	8.19	
0.032		1/2	140	TU-78	7.51	
0.028		1/2	190	TU-79	7.51	
0.025		1/2	190	TU-80	6.77	
0.023		1/2	190	TU-81	6.77	
0.020		1/2	190	TU-82	7.46	
0.018		1/2	190	TU-83	7.93	
0.016		1/2	190	TU-84	8.14	
0.014		1/2	190	TU-85	9.03	
0.012		1/2	240	TU-86	9.35	
3"	0.010	1/2	240	TU-88	10.76	
	0.008	1/2	240	TU-90	13.13	
	0.006	1/2	240	TU-92	15.07	
	0.057	1/2	170	TU-94	11.50	
	0.057	1	170	TU-094-1	11.50	
	0.051	1/2	170	TU-95	11.50	
	0.051	1	170	TU-095-1	11.50	
	0.045	1/2	170	TU-96	10.13	
	0.045	1	170	TU-096-1	10.13	
	0.040	1/2	170	TU-97	10.13	
	0.040	1	170	TU-097-1	10.13	
	0.035	1/2	170	TU-98	9.66	
	0.035	1	170	TU-098-1	9.66	
	0.032	1/2	170	TU-99	8.98	
0.032	1	170	TU-099-1	8.98		
3"	0.028	1/2	224	TU-100	9.40	
	0.028	1	224	TU-100-1	9.40	
	0.025	1/2	224	TU-101	8.24	
	0.025	1	224	TU-101-1	8.24	
	0.023	1/2	224	TU-102	8.24	
	0.023	1	224	TU-102-1	8.24	
	0.020	1/2	224	TU-103	9.03	
	0.020	1	224	TU-103-1	9.03	
	0.018	1/2	224	TU-104	9.92	
	0.018	1	224	TU-104-1	9.92	
	0.016	1/2	224	TU-105	10.45	
	0.016	1	224	TU-105-1	10.45	
	0.014	1/2	224	TU-106	10.87	
	0.014	1	224	TU-106-1	10.87	

Cutter Dia	Thick ness	Arbor Hole	No. of Teeth	Part Number	Price Each
3"	0.012	1/2	280	TU-107	11.34
	0.012	1	280	TU-107-1	11.34
	0.010	1/2	280	TU-109	13.13
	0.010	1	280	TU-109-1	13.13
	0.008	1/2	280	TU-111	16.59
	0.008	1	280	TU-111-1	16.59
4"	0.057	1/2	224	TU-113	17.80
	0.057	1	224	TU-113-1	17.80
	0.051	1/2	224	TU-114	17.48
	0.051	1	224	TU-114-1	17.48
	0.045	1/2	224	TU-115	17.48
	0.045	1	224	TU-115-1	17.48
	0.040	1/2	224	TU-116	15.86
	0.040	1	224	TU-116-1	15.86
	0.035	1/2	224	TU-117	15.17
	0.035	1	224	TU-117-1	15.17
	0.032	1/2	224	TU-118	14.44
	0.032	1	224	TU-118-1	14.44
	0.028	1/2	300	TU-119	13.49
	0.028	1	300	TU-119-1	13.49
	0.025	1/2	300	TU-120	13.49
	0.025	1	300	TU-120-1	13.49
	0.023	1/2	300	TU-121	15.07
	0.023	1	300	TU-121-1	15.07
	0.020	1/2	300	TU-122	16.22
	0.020	1	300	TU-122-1	16.22
	0.018	1/2	300	TU-123	17.33
	0.018	1	300	TU-123-1	17.33
	0.016	1/2	300	TU-124	18.27
	0.016	1	300	TU-124-1	18.27
0.014	1/2	300	TU-125	18.64	
0.014	1	300	TU-125-1	18.64	
0.012	1/2	380	TU-126	21.00	
0.012	1	380	TU-126-1	21.00	
0.010	1/2	380	TU-128	21.53	
0.010	1	380	TU-128-1	21.53	
5"	0.057	1/2	280	TU-129	26.25
	0.057	1	280	TU-129-1	26.25
	0.051	1/2	280	TU-130	25.88
	0.051	1	280	TU-130-1	25.88
	0.045	1/2	280	TU-131	25.88
	0.045	1	280	TU-131-1	25.88
	0.040	1/2	280	TU-132	23.00
	0.040	1	280	TU-132-1	23.00
	0.035	1/2	280	TU-133	22.00
	0.035	1	280	TU-133-1	22.00
	0.032	1/2	280	TU-134	22.00
	0.032	1	280	TU-134-1	22.00
	0.028	1/2	380	TU-135	22.37
	0.028	1	380	TU-135-1	22.37
	0.025	1/2	380	TU-136	22.37
	0.025	1	380	TU-136-1	22.37
	0.023	1/2	380	TU-137	23.68
	0.023	1	380	TU-137-1	23.68
	0.020	1/2	380	TU-137A	24.94
	0.020	1	380	TU-137A-1	24.94
	0.018	1/2	380	TU-138	26.09
	0.018	1	380	TU-138-1	26.09
	0.016	1/2	380	TU-139	27.41

Additional sizes available. Please call for more information.

Call Us Today For All Of Your Machine Tool Needs!

CHUCK JAWS
LATHE WORKHOLDING

MACHINE VISES
MAGNETIC CHUCKS

RETENTION KNOBS
ER, DA, TG COLLETS

TOOLHOLDERS
TAP HOLDERS

INDEXABLE DRILLS
TURNING & BORING

ENDMILLS, DRILLS
TAPS & REAMERS

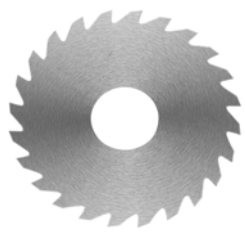
ABRASIVES
MEASURING TOOLS

MRO & SAFETY
FLAT STOCK/DRILL ROD

SOLID CARBIDE SAWS

C

SOLID CARBIDE SAWS



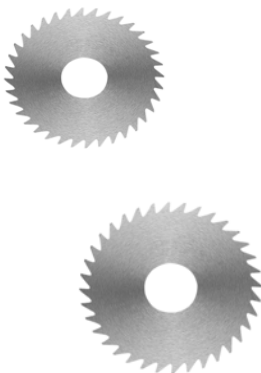
Thickness	3/4" dia 1/4" Hole 10 or 20 teeth		1" dia 3/8" Hole 12 or 24 Teeth		1 1/4" dia 1/2" Hole 16 or 36 teeth		1 1/2" dia 1/2" Hole 16 or 36 teeth		1 3/4" dia 1/2", 5/8" or 7/8" Hole 24 or 36 teeth	
	Part Number	Price	Part Number	Price	Part Number	Price	Part Number	Price	Part Number	Price
.0020	ROB-C07002	\$111.62	ROB-C10002	\$127.74	ROB-C12002	\$165.42	ROB-C15002	\$189.04	ROB-C17002	\$212.51
.0040	ROB-C07004	\$102.07	ROB-C10004	\$102.07	ROB-C12004	\$132.25	ROB-C15004	\$151.36	ROB-C17004	\$170.03
.0060	ROB-C07006	\$81.63	ROB-C10006	\$68.16	ROB-C12006	\$88.40	ROB-C15006	\$100.79	ROB-C17006	\$113.58
.0080	ROB-C07008	\$54.49	ROB-C10008	\$61.15	ROB-C12008	\$71.25	ROB-C15008	\$81.39	ROB-C17008	\$91.48
.0100	ROB-C07010	\$47.24	ROB-C10010	\$61.15	ROB-C12010	\$71.25	ROB-C15010	\$81.39	ROB-C17010	\$91.48
.0120	ROB-C07012	\$46.45	ROB-C10012	\$48.02	ROB-C12012	\$54.93	ROB-C15012	\$69.97	ROB-C17012	\$79.77
.0140	ROB-C07014	\$36.70	ROB-C10014	\$48.02	ROB-C12014	\$54.93	ROB-C15014	\$69.97	ROB-C17014	\$79.77
.0156	ROB-C07016	\$36.70	ROB-C10016	\$48.02	ROB-C12016	\$54.93	ROB-C15016	\$69.97	ROB-C17016	\$79.77
.0180	ROB-C07018	\$36.70	ROB-C10018	\$48.02	ROB-C12018	\$54.93	ROB-C15018	\$69.97	ROB-C17018	\$79.77
.0200	ROB-C07020	\$36.70	ROB-C10020	\$40.62	ROB-C12020	\$48.56	ROB-C15020	\$57.13	ROB-C17020	\$74.09
.0230	ROB-C07023	\$31.95	ROB-C10023	\$40.62	ROB-C12023	\$48.56	ROB-C15023	\$57.13	ROB-C17023	\$74.09
.0250	ROB-C07025	\$31.95	ROB-C10025	\$40.62	ROB-C12025	\$48.56	ROB-C15025	\$57.13	ROB-C17025	\$74.09
.0280	ROB-C07028	\$31.95	ROB-C10028	\$40.62	ROB-C12028	\$48.56	ROB-C15028	\$57.13	ROB-C17028	\$74.09
.0312	ROB-C07032	\$26.66	ROB-C10032	\$37.29	ROB-C12032	\$37.68	ROB-C15032	\$49.93	ROB-C17032	\$64.63
.0350	ROB-C07035	\$26.66	ROB-C10035	\$37.29	ROB-C12035	\$37.68	ROB-C15035	\$49.93	ROB-C17035	\$64.63
.0400	ROB-C07040	\$26.66	ROB-C10040	\$37.29	ROB-C12040	\$37.68	ROB-C15040	\$49.93	ROB-C17040	\$64.63
.0468	ROB-C07045	\$32.00	ROB-C10045	\$40.52	ROB-C12045	\$40.77	ROB-C15045	\$51.79	ROB-C17045	\$68.16
.0510	ROB-C07051	\$32.00	ROB-C10051	\$40.52	ROB-C12051	\$40.77	ROB-C15051	\$51.79	ROB-C17051	\$68.16
.0625	ROB-C07062	\$32.00	ROB-C10062	\$40.52	ROB-C12062	\$40.77	ROB-C15062	\$51.79	ROB-C17062	\$68.16
.0781	ROB-C07078	\$41.65	ROB-C10078	\$51.01	ROB-C12078	\$49.88	ROB-C15078	\$62.77	ROB-C17078	\$76.39
.0937	ROB-C07092	\$46.31	ROB-C10092	\$56.60	ROB-C12092	\$60.81	ROB-C15092	\$71.44	ROB-C17092	\$80.26
.1250	ROB-C07125	\$60.56	ROB-C10125	\$75.66	ROB-C12125	\$77.96	ROB-C15125	\$76.95	ROB-C17125	\$97.31
.1562	ROB-C07156	\$81.39	ROB-C10156	\$90.26	ROB-C12156	\$95.80	ROB-C15156	\$102.41	ROB-C17156	\$104.71
.1875	ROB-C07187	\$86.24	ROB-C10187	\$94.18	ROB-C12187	\$99.47	ROB-C15187	\$105.27	ROB-C17187	\$124.85
.2500	ROB-C07250	\$107.41	ROB-C10250	\$108.83	ROB-C12250	\$123.48	ROB-C15250	\$123.97	ROB-C17250	\$151.51

APPLICATION GUIDELINES

- If depth of cut exceeds 3 times saw thickness double standard concavity is recommended.
- If depth of cut exceeds 5 times saw thickness alternate tooth chamfer is recommended.
- Saw diameter concentricity should be within .001" when assembled on arbor.
- When using more than one saw at a time, a flat and parallel hub should be used to ensure proper spacing.
- If steel flanges are used, select the largest diameter possible.
- Keyways (generally not used with solid carbide slitting saws) also available.

CUSTOM CARBIDE SAWS

- Please call for quotes on special orders.
- Special Cutting Diameters
 - Special Thicknesses
 - Special Arbor Hole Sizes and Keyways
 - Special Chamfers, Angles or Radii
 - Special Tooth Configurations and Pitches



Thickness	2" dia 1/2" or 1" Hole 24 or 48 teeth		2 1/4" dia 5/8" Hole 28 or 56 teeth		2 1/2" dia 1" Hole 28 or 56 teeth		2 3/4" dia 1" Hole 30 or 60 teeth		3" dia 1" Hole 30 or 60 Teeth	
	Part Number	Price	Part Number	Price	Part Number	Price	Part Number	Price	Part Number	Price
.0020	ROB-C20002	\$242.21	ROB-C22002	\$253.82	ROB-C25002	\$265.38	ROB-C27002	\$293.41	ROB-C30002	\$305.52
.0040	ROB-C20004	\$193.84	ROB-C22004	\$203.06	ROB-C25004	\$212.12	ROB-C27004	\$234.96	ROB-C30004	\$244.46
.0060	ROB-C20006	\$129.36	ROB-C22006	\$135.58	ROB-C25006	\$141.76	ROB-C27006	\$156.65	ROB-C30006	\$163.22
.0080	ROB-C20008	\$104.42	ROB-C22008	\$108.83	ROB-C25008	\$114.42	ROB-C27008	\$126.37	ROB-C30008	\$131.71
.0100	ROB-C20010	\$104.42	ROB-C22010	\$108.83	ROB-C25010	\$114.42	ROB-C27010	\$126.37	ROB-C30010	\$131.71
.0120	ROB-C20012	\$86.39	ROB-C22012	\$93.93	ROB-C25012	\$102.51	ROB-C27012	\$118.09	ROB-C30012	\$124.07
.0140	ROB-C20014	\$86.39	ROB-C22014	\$93.93	ROB-C25014	\$102.51	ROB-C27014	\$118.09	ROB-C30014	\$124.07
.0156	ROB-C20016	\$86.39	ROB-C22016	\$93.93	ROB-C25016	\$102.51	ROB-C27016	\$118.09	ROB-C30016	\$124.07
.0180	ROB-C20018	\$86.39	ROB-C22018	\$93.93	ROB-C25018	\$102.51	ROB-C27018	\$118.09	ROB-C30018	\$124.07
.0200	ROB-C20020	\$79.23	ROB-C22020	\$86.14	ROB-C25020	\$93.84	ROB-C27020	\$107.85	ROB-C30020	\$120.05
.0230	ROB-C20023	\$79.23	ROB-C22023	\$86.14	ROB-C25023	\$93.84	ROB-C27023	\$107.85	ROB-C30023	\$120.05
.0250	ROB-C20025	\$79.23	ROB-C22025	\$86.14	ROB-C25025	\$93.84	ROB-C27025	\$107.85	ROB-C30025	\$120.05
.0280	ROB-C20028	\$79.23	ROB-C22028	\$86.14	ROB-C25028	\$93.84	ROB-C27028	\$107.85	ROB-C30028	\$120.05
.0312	ROB-C20032	\$69.14	ROB-C22032	\$79.53	ROB-C25032	\$90.70	ROB-C27032	\$104.08	ROB-C30032	\$117.55
.0350	ROB-C20035	\$69.14	ROB-C22035	\$79.53	ROB-C25035	\$90.70	ROB-C27035	\$104.08	ROB-C30035	\$117.55
.0400	ROB-C20040	\$69.14	ROB-C22040	\$79.53	ROB-C25040	\$90.70	ROB-C27040	\$104.08	ROB-C30040	\$117.55
.0468	ROB-C20045	\$71.34	ROB-C22045	\$83.79	ROB-C25045	\$97.07	ROB-C27045	\$111.48	ROB-C30045	\$124.36
.0510	ROB-C20051	\$71.34	ROB-C22051	\$83.79	ROB-C25051	\$97.07	ROB-C27051	\$111.48	ROB-C30051	\$124.36
.0625	ROB-C20062	\$71.34	ROB-C22062	\$83.79	ROB-C25062	\$97.07	ROB-C27062	\$111.48	ROB-C30062	\$124.36
.0781	ROB-C20078	\$80.75	ROB-C22078	\$98.49	ROB-C25078	\$117.31	ROB-C27078	\$135.19	ROB-C30078	\$151.31
.0937	ROB-C20092	\$86.98	ROB-C22092	\$104.86	ROB-C25092	\$123.58	ROB-C27092	\$143.77	ROB-C30092	\$162.97
.1250	ROB-C20125	\$101.72	ROB-C22125	\$118.29	ROB-C25125	\$135.88	ROB-C27125	\$173.85	ROB-C30125	\$207.27
.1562	ROB-C20156	\$117.75	ROB-C22156	\$141.66	ROB-C25156	\$166.80	ROB-C27156	\$207.61	ROB-C30156	\$229.96
.1875	ROB-C20187	\$147.25	ROB-C22187	\$168.76	ROB-C25187	\$183.06	ROB-C27187	\$230.59	ROB-C30187	\$248.58
.2500	ROB-C20250	\$174.39	ROB-C22250	\$202.81	ROB-C25250	\$222.12	ROB-C27250	\$263.57	ROB-C30250	\$296.89

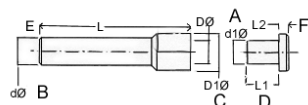
PRICING FOR SPECIAL DECIMAL THICKNESSES

- Find the price of the closest thicker standard saw
- To this, add \$5.00 for one of a size
- Add \$3.50 for two to six of a size
- For 7 or more, there is no additional charge above the base price
- Quantity discounts apply to special thicknesses
- Saws made for gangs with special tolerances are priced on application

SAW ARBORS

TOLERANCES

- DØ - +.0002" / -.0003"
- D1Ø - +/- .003"
- dØ - -.0001" / -.0002"
- L - +/- .060"
- d1Ø - +.0000" / -.0002"
- L1 - +.060" / -.000"
- L2 - +.060" / -.000"



- Total thickness of saws/ spacers should not exceed 50% of L1 dimension.
- Arbor caps with longer L1 dimension available.

DØ	d1Ø	dØ	D1Ø	L1	L	L2	Part Number	Set Price
1/4	1/2	1/2	3/8	2- 7/8	3/16	ROB-AB250	\$136.02	
3/8	1/2	5/8	3/8	2- 7/8	1/4	ROB-AB375	\$154.06	
1/2	1/2	3/4	1/2	2- 7/8	3/16	ROB-AB500	\$172.24	
5/8	3/4	1	7/8	4	1/4	ROB-AB625	\$172.24	
7/8	3/4	1-1/4	1	4	1/4	ROB-AB875	\$268.77	
1	3/4	1-1/2	1	4	1/4	ROB-AB1000	\$244.95	
1	1	1-1/2	1	5	1/4	ROB-AB1000-1	\$253.77	
1-1/4	1	1-3/4	1- 3/8	5	1/4	ROB-AB1250	\$366.72	

Call Us Or Visit Our Website For Our Complete Selection!

2010-11 Master Catalog

471

LATHES CHUCKS
LIVE CENTERS
VISE ACCESSORIES
VISE JAWS
STRAIGHT SHANK COLLET HOLDERS
LATHES BUSHINGS
DRILL CHUCKS
CARBIDE INSERTS
THREADING/GROOVING
CUTTING TOOLS
MACHINERY
PRECISION TOOLS
DEBURRING
COOLANT/FLUIDS
TOOL STORAGE

BANDSAW BLADES-WELDED TO LENGTH

CHUCK JAWS
LATHE WORKHOLDING

MACHINE VISES
MAGNETIC CHUCKS

RETENTION KNOBS
ER, DA, TG COLLETS

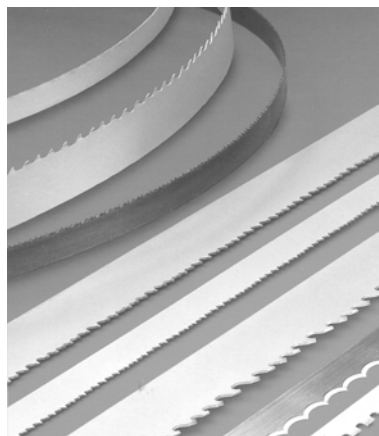
TOOLHOLDERS
TAP HOLDERS

INDEXABLE DRILLS
TURNING & BORING

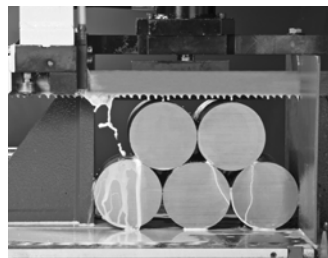
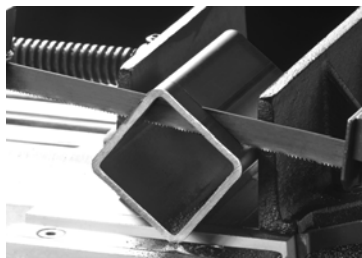
ENDMILLS, DRILLS
TAPS & REAMERS

ABRASIVES
MEASURING TOOLS

MRO & SAFETY
FLAT STOCK/DRILL ROD



Starrett bandsaw blades aim to satisfy your diverse metal-cutting needs with four qualities which will overcome the common-place as well as the more unusual industrial applications and at the same time reduce operating costs. You can count on Starrett blades to provide accurate cutting tools of the highest quality!



Tooth Types:
Regular= General purpose for cutting and contouring a majority of ferrous and nonferrous metals



Hook= 10° positive rake for fast cutting and reduced feed rates. For cutting nonferrous and tough alloys 3" and larger



Variant= Gullets and tooth size vary over set intervals, with each tooth achieving a slightly different cutting angle. For interrupted cutting and high production cutting of solids

Did You Know...?

Coolant is the key to saw blade life. The number one reason that band saws break is coolant. Whether it is bad coolant, no coolant or coolant mixed wrong, coolant is essential in sawing, as there is much less room for the chip compared to milling. Without proper cutting fluid the chip may become welded to the tooth of the blade, resulting in an unbalanced blade and crooked cut. In addition, the chip may wedge in the cut, again resulting in a crooked cut and dull blade.

POWERBAND M42 Bi-Metal High Speed Steel WELDED-TO-LENGTH BANDSAW BLADES

Ideal for general purpose cutting operations across a wide range of metals

- This bi-metal material has a high speed steel cutting edge (contains 8% cobalt) welded to an alloy steel back.
- Resists heat, abrasion and shock which allows faster cutting rates over a wide range of materials.
- Can be used on horizontal machines and light-duty vertical machines equally well.
- Ideal for contour cutting and general purpose cutting

WELDED TO LENGTH!



Tooth Set:

- P**= Positive Rake-For cutting of solids
- S**= Straight (0°) Rake-For all material shapes
- W**= Wavy Set (0° Rake)-Light duty for tubing, pipe and light duty sawing applications

Length	Width	Thick-ness	TPI	Part Number	Price Each
7ft. 9"	3/4"	0.035	5-8/S	SR-PM4299198-79	\$48.42
9ft. 11"	1"	0.035	5-8/S	SR-PM4299297-911	\$66.60
10ft. 5"	3/4"	0.035	4-6/S	SR-PM4299195-105	\$61.02
10ft. 5"	3/4"	0.035	5-8/S	SR-PM4299198-105	\$61.02
10ft. 10-1/2"	3/4"	0.035	5-8/S	SR-PM4299198-101	\$63.54
10ft. 10-1/2"	1"	0.035	4-6/S	SR-PM4299307-101	\$72.36
10ft. 10-1/2"	1"	0.035	5-8/S	SR-PM4299297-101	\$72.36
11ft.	3/4"	0.035	4-6/S	SR-PM4299195-11	\$63.54
11ft.	3/4"	0.035	5-8/S	SR-PM4299198-11	\$63.54
11ft.	1"	0.035	4-6/S	SR-PM4299307-11	\$72.36
11ft.	1"	0.035	5-8/S	SR-PM4299297-11	\$72.36
11ft. 3	1"	0.035	4-6/S	SR-PM4299307-113	\$75.24
11ft. 5	3/4"	0.035	5-8/S	SR-PM4299198-115	\$66.06
11ft. 5	1"	0.035	5-8/S	SR-PM4299297-115	\$75.24
11ft. 6	3/4"	0.035	4-6/S	SR-PM4299195-116	\$66.06
11ft. 6	3/4"	0.035	5-8/S	SR-PM4299198-116	\$66.06
11ft. 6	1"	0.035	4-6/S	SR-PM4299307-116	\$75.24
11ft. 6	1"	0.035	5-8/S	SR-PM4299297-116	\$75.24
11ft. 6	1-1/4"	0.042	4-6/S	SR-PM4299430-116	\$87.98
11ft. 6	1-1/4"	0.042	5-8/S	SR-PM4299434-116	\$87.98
12ft.	1"	0.035	3-4/S	SR-PM4299282-12	\$78.12
12ft.	1"	0.035	4-6/S	SR-PM4299307-12	\$78.12
12ft.	1"	0.035	5-8/S	SR-PM4299297-12	\$78.12
12ft.	1-1/4"	0.042	3-4/S	SR-PM4299423-12	\$91.35
12ft.	1-1/4"	0.042	4-6/S	SR-PM4299430-12	\$91.35
12ft.	1-1/4"	0.042	5-8/S	SR-PM4299434-12	\$91.35

Length	Width	Thick-ness	TPI	Part Number	Price Each
12ft. 6"	1"	0.035	3-4/S	SR-PM4299282-126	\$81.00
12ft. 6"	1"	0.035	4-6/S	SR-PM4299307-126	\$81.00
12ft. 6"	1"	0.035	5-8/S	SR-PM4299297-126	\$81.00
12ft. 6"	1-1/4"	0.042	4-6/S	SR-PM4299430-126	\$94.73
12ft. 10"	1"	0.035	4-6/S	SR-PM4299307-121	\$83.88
13ft.	1"	0.035	4-6/S	SR-PM4299307-13	\$83.88
13ft. 6"	1"	0.035	3-4/S	SR-PM4299282-136	\$86.76
13ft. 6"	1"	0.035	4-6/S	SR-PM4299307-136	\$86.76
13ft. 6"	1"	0.035	5-8/S	SR-PM4299297-136	\$86.76
13ft. 6"	1-1/4"	0.042	3-4/S	SR-PM4299423-136	\$101.48
13ft. 6"	1-1/4"	0.042	4-6/S	SR-PM4299430-136	\$101.48
13ft. 6"	1-1/4"	0.042"	5-8/S	SR-PM4299434-136	\$101.48
14ft. 6"	1"	0.035	3-4/S	SR-PM4299282-146	\$92.52
14ft. 6"	1"	0.035	4-6/S	SR-PM4299307-146	\$92.52
14ft. 6"	1"	0.035	5-8/S	SR-PM4299297-146	\$92.52
14ft. 6"	1-1/4"	0.042	3-4/S	SR-PM4299423-146	\$108.23
14ft. 6"	1-1/4"	0.042	4-6/S	SR-PM4299430-146	\$108.23
14ft. 8"	3/4"	0.035	4-6/S	SR-PM4299195-148	\$83.70
14ft. 8"	3/4"	0.035	5-8/S	SR-PM4299198-148	\$83.70
15ft.	1-1/4"	0.042	3-4/S	SR-PM4299423-15	\$111.60
15ft.	1-1/4"	0.042	4-6/S	SR-PM4299430-15	\$111.60
15ft.	1-1/4"	0.042	5-8/S	SR-PM4299434-15	\$111.60
15ft. 6"	1"	0.035	4-6/S	SR-PM4299307-156	\$98.28
15ft. 6"	1-1/4"	0.042	3-4/S	SR-PM4299423-156	\$114.98
15ft. 6"	1-1/4"	0.042	4-6/S	SR-PM4299430-156	\$114.98
15ft. 6"	1-1/4"	0.042	5-8/S	SR-PM4299434-156	\$114.98
15ft. 8"	1-1/4"	"0.042	4-6/S	SR-PM4299430-158	\$118.35
15ft. 8"	1-1/4"	"0.042	5-8/S	SR-PM4299434-158	\$118.35
16ft. 2"	1-1/4"	"0.042	4-6/S	SR-PM4299430-162	\$121.73

Call Us Today For All Of Your Machine Tool Needs!

BANDSAW BLADES-WELDED TO LENGTH

C

LATHES CHUCKS
LIVE CENTERS

WISE JAWS
WISE ACCESSORIES

STRAIGHT SHANK
COLLET HOLDERS

LATHE BUSHINGS
DRILL CHUCKS

CARBIDE INSERTS
THREADING/GROOVING

CUTTING TOOLS
MACHINERY

PRECISION TOOLS
DEBURRING

COOLANT/FLUIDS
TOOL STORAGE

Starrett®



**NEW
ITEM!**



Duratec™ FB (formerly Flex-Back™) Carbon Steel With A Flexible Back WELDED-TO-LENGTH BANDSAW BLADES

Ideal For Economical Cutting On Easy-to-Machine
Ferrous Or Nonferrous Metal And Wood

- Flexible carbon steel back
- Economical general purpose cutting
- Ideal for both contour and straight cutting
- For nonferrous and low alloy metals, wood and plastics

Length	Width	Thick-ness	Tooth Shape	TPI	Part Number	Price Each
5ft	1/2"	0.025	Regular	10/S	SR-HEFB91380-5	\$12.29
5ft	1/2"	0.025	Regular	14/S	SR-HEFB91401-5	\$12.29
5ft	1/2"	0.025	Wavy	14/W	SR-HEFB91411-5	\$12.29
5ft	1/2"	0.025	Regular	18/W	SR-HEFB91420-5	\$12.29
5ft	1/2"	0.025	Regular	6/S	SR-HEFB91361-5	\$12.29
5ft. 4-1/2"	1/2"	0.025	Regular	10/S	SR-HEFB91380-54	\$12.79
5ft. 4-1/2"	1/2"	0.025	Regular	14/S	SR-HEFB91401-54	\$12.79
5ft. 4-1/2"	1/2"	0.025	Wavy	14/W	SR-HEFB91411-54	\$12.79
5ft. 4-1/2"	1/2"	0.025	Regular	18/W	SR-HEFB91420-54	\$12.79
5ft. 4-1/2"	1/2"	0.025	Regular	24/W	SR-HEFB91430-54	\$12.79
6ft. 8"	1/4"	0.025	Skip	4/S	SR-HEFB91130-68	\$13.94
6ft. 8"	1/4"	0.025	Skip	6/S	SR-HEFB91140-68	\$13.94
6ft. 9"	1/2"	0.025	Regular	14/S	SR-HEFB91401-69	\$14.32
7ft. 5"	1/2"	0.025	Regular	6/S	SR-HEFB91361-75	\$14.83
7ft. 5"	1/2"	0.025	Regular	10/S	SR-HEFB91380-75	\$14.83
7ft. 5"	1/2"	0.025	Regular	14/W	SR-HEFB91411-75	\$14.83
7ft. 5"	1/2"	0.025	Regular	18/W	SR-HEFB91420-75	\$14.83
7ft. 6"	1/2"	0.025	Regular	10/S	SR-HEFB91380-76	\$15.34
7ft. 6"	1/2"	0.025	Regular	18/W	SR-HEFB91420-76	\$15.34
7ft. 6"	5/8"	0.032	Regular	14/S	SR-HEFB91471-76	\$17.78
7ft. 9"	1/2"	0.025	Skip	4/S	SR-HEFB91340-79	\$15.34
7ft. 9"	1/2"	0.025	Regular	6/S	SR-HEFB91361-79	\$15.34
7ft. 9"	1/2"	0.025	Regular	10/S	SR-HEFB91380-79	\$15.34
7ft. 9"	1/2"	0.025	Regular	14/W	SR-HEFB91411-79	\$15.34
7ft. 9"	1/2"	0.025	Regular	18/W	SR-HEFB91420-79	\$15.34
7ft. 9"	5/8"	0.032	Regular	10/S	SR-HEFB91450-79	\$17.78
7ft. 9"	5/8"	0.032	Regular	14/S	SR-HEFB91471-79	\$17.78
7ft. 9"	3/4"	0.032	Regular	6/S	SR-HEFB91531-79	\$18.65
7ft. 9"	3/4"	0.032	Regular	10/S	SR-HEFB91570-79	\$18.65
7ft. 9"	3/4"	0.032	Regular	14/S	SR-HEFB91621-79	\$18.65
7ft. 9-1/2"	1/4"	0.025	Skip	4/S	SR-HEFB91120-79	\$14.90
7ft. 9-1/2"	1/4"	0.025	Skip	6/S	SR-HEFB91140-79	\$14.90
7ft. 9-1/2"	3/8"	0.025	Skip	4/S	SR-HEFB91240-79	\$15.19
7ft. 9-1/2"	3/8"	0.025	Regular	6/S	SR-HEFB91261-79	\$15.19
7ft. 9-1/2"	3/8"	0.025	Regular	10/S	SR-HEFB91281-79	\$15.19
7ft. 9-1/2"	3/8"	0.025	Regular	14/S	SR-HEFB91291-79	\$15.19
7ft. 9-1/2"	1/2"	0.025	Skip	4/S	SR-HEFB91340-795	\$15.34
7ft. 9-1/2"	1/2"	0.025	Regular	6/S	SR-HEFB91361-79	\$15.34
7ft. 9-1/2"	1/2"	0.025	Regular	10/S	SR-HEFB91380-79	\$15.34
7ft. 9-1/2"	1/2"	0.025	Regular	14/S	SR-HEFB91401-79	\$15.34
7ft. 9-1/2"	1/2"	0.025	Regular	18/W	SR-HEFB91420-79	\$15.34
7ft. 9-1/2"	1/2"	0.025	Regular	24/W	SR-HEFB91430-79	\$15.34
8ft.	1/2"	0.025	Regular	10/S	SR-HEFB91380-8	\$15.34
8ft.	1/2"	0.025	Regular	14/S	SR-HEFB91401-8	\$15.34
8ft. 2"	3/4"	0.032	Regular	10/S	SR-HEFB91380-82	\$15.84
8ft. 2-1/2"	5/8"	0.032	Regular	10/S	SR-HEFB91450-82	\$18.45
8ft. 2-1/2"	5/8"	0.032	Regular	14/S	SR-HEFB91471-82	\$18.45
8ft. 10"	3/4"	0.032	Regular	10/S	SR-HEFB91570-81	\$20.08
8ft. 10"	3/4"	0.032	Regular	14/S	SR-HEFB91621-81	\$20.08
8ft. 11"	3/4"	0.032	Regular	10/S	SR-HEFB91570-811	\$20.08
8ft. 11"	3/4"	0.032	Regular	14/S	SR-HEFB91621-811	\$20.08
9ft.	3/4"	0.032	Regular	8/S	SR-HEFB91550-9	\$20.08
9ft.	3/4"	0.032	Regular	10/S	SR-HEFB91570-9	\$20.08
9ft.	3/4"	0.032	Regular	14/S	SR-HEFB91621-9	\$20.08
9ft. 6"	1/2"	0.025	Regular	14/S	SR-HEFB91401-96	\$17.37
9ft. 6"	3/4"	0.032	Regular	10/S	SR-HEFB91570-96	\$21.51
9ft. 6"	3/4"	0.032	Regular	14/S	SR-HEFB91621-96	\$21.51
9ft. 7-1/2"	3/4"	0.032	Regular	10/S	SR-HEFB91570-97	\$21.51
9ft. 7-1/2"	3/4"	0.032	Regular	14/S	SR-HEFB91621-97	\$21.51

Length	Width	Thick-ness	Tooth Shape	TPI	Part Number	Price Each
10ft.	1/4"	0.025	Regular	14/S	SR-HEFB91181-10	\$16.83
10ft.	1/2"	0.025	Regular	10/S	SR-HEFB91380-10	\$17.37
10ft.	1/2"	0.025	Regular	14/S	SR-HEFB91401-10	\$17.37
10ft.	3/4"	0.032	Regular	10/S	SR-HEFB91570-10	\$21.51
10ft.	3/4"	0.032	Regular	14/S	SR-HEFB91621-10	\$21.51
10ft. 5"	3/4"	0.032	Regular	6/S	SR-HEFB91531-15	\$22.23
10ft. 5"	3/4"	0.032	Regular	8/S	SR-HEFB91550-15	\$22.23
10ft. 5"	3/4"	0.032	Regular	14/S	SR-HEFB91621-15	\$22.23
10ft. 10-1/2"	3/4"	0.032	Regular	6/S	SR-HEFB91531-101	\$22.94
10ft. 10-1/2"	3/4"	0.032	Regular	8/S	SR-HEFB91550-101	\$22.94
10ft. 10-1/2"	3/4"	0.032	Regular	14/S	SR-HEFB91621-101	\$22.94
10ft. 10-1/2"	1"	0.035	Regular	6/S	SR-HEFB91701-101	\$26.56
10ft. 10-1/2"	1"	0.035	Regular	8/S	SR-HEFB91720-101	\$26.56
10ft. 10-1/2"	1"	0.035	Regular	10/S	SR-HEFB91730-101	\$26.56
10ft. 10-1/2"	1"	0.035	Regular	14/S	SR-HEFB91761-101	\$26.56
11ft.	1"	0.035	Regular	6/S	SR-HEFB91701-11	\$26.56
11ft.	1"	0.035	Regular	8/S	SR-HEFB91720-11	\$26.56
11ft.	1"	0.035	Regular	10/S	SR-HEFB91730-11	\$26.56
11ft.	1"	0.035	Regular	14/S	SR-HEFB91761-11	\$26.56
11ft. 5"	3/4"	0.032	Regular	10/S	SR-HEFB91570-115	\$23.66
11ft. 5"	3/4"	0.032	Regular	14/S	SR-HEFB91621-115	\$23.66
11ft. 5"	1"	0.035	Regular	10/S	SR-HEFB91730-115	\$27.42
11ft. 6"	3/4"	0.032	Regular	6/S	SR-HEFB91531-116	\$24.37
11ft. 6"	3/4"	0.032	Regular	8/S	SR-HEFB91550-116	\$24.37
11ft. 6"	3/4"	0.032	Regular	10/S	SR-HEFB91570-116	\$24.37
11ft. 6"	3/4"	0.032	Regular	14/S	SR-HEFB91621-116	\$24.37
11ft. 6"	1"	0.035	Regular	6/S	SR-HEFB91701-116	\$28.28
11ft. 6"	1"	0.035	Regular	8/S	SR-HEFB91720-116	\$28.28
11ft. 6"	1"	0.035	Regular	10/S	SR-HEFB91730-116	\$28.28
11ft. 6"	1"	0.035	Regular	14/S	SR-HEFB91761-116	\$28.28
12ft.	1/2"	0.025	Regular	14/S	SR-HEFB91401-12	\$19.40
12ft.	1"	0.035	Regular	6/S	SR-HEFB91701-12	\$28.28
12ft.	1"	0.035	Regular	10/S	SR-HEFB91730-12	\$28.28
12ft. 1"	3/4"	0.032	Regular	10/S	SR-HEFB91570-121	\$25.09
12ft. 6"	1/4"	0.025	Regular	14/S	SR-HEFB91181-126	\$19.72
12ft. 6"	3/8"	0.025	Skip	4/S	SR-HEFB91240-126	\$20.19
12ft. 6"	3/8"	0.025	Regular	6/S	SR-HEFB91261-126	\$20.19
12ft. 6"	3/8"	0.025	Regular	14/S	SR-HEFB91291-126	\$20.19
12ft. 6"	1/2"	0.025	Hook	4/H	SR-HEFB91350-126	\$20.42
12ft. 6"	1/2"	0.025	Skip	4/S	SR-HEFB91340-126	\$20.42
12ft. 6"	1/2"	0.025	Regular	6/S	SR-HEFB91361-126	\$20.42
12ft. 6"	1/2"	0.025	Regular	10/S	SR-HEFB91380-126	\$20.42
12ft. 6"	1/2"	0.025	Regular	14/W	SR-HEFB91390-126	\$20.42
12ft. 6"	1/2"	0.025	Regular	18/W	SR-HEFB91420-126	\$20.42
12ft. 6"	3/4"	0.032	Regular	10/S	SR-HEFB91570-126	\$25.80
12ft. 6"	1"	0.035	Regular	6/S	SR-HEFB91701-126	\$30.00
12ft. 6"	1"	0.035	Regular	8/S	SR-HEFB91720-126	\$30.00
12ft. 6"	1"	0.035	Regular	10/S	SR-HEFB91730-126	\$30.00
12ft. 6"	1"	0.035	Regular	14/S	SR-HEFB91761-126	\$30.00
12ft. 10"	1/2"	0.025	Regular	10/S	SR-HEFB91380-121	\$20.42
13ft. 11"	1"	0.035	Regular	8/S	SR-HEFB91720-131	\$30.86
13ft. 11"	1"	0.035	Regular	10/S	SR-HEFB91730-131	\$30.86
13ft. 11"	1"	0.035	Regular	14/S	SR-HEFB91761-131	\$30.86
14ft. 5"	1"	0.035	Regular	10/S	SR-HEFB91730-145	\$32.58
14ft. 6"	1/2"	0.025	Regular	10/S	SR-HEFB91380-146	\$22.46
14ft. 6"	3/4"	0.032	Regular	6/S	SR-HEFB91531-146	\$28.67
14ft. 6"	3/4"	0.032	Regular	10/S	SR-HEFB91570-146	\$28.67
14ft. 8"	3/4"	0.032	Regular	6/S	SR-HEFB91531-148	\$28.67
14ft. 8"	3/4"	0.032	Regular	8/S	SR-HEFB91550-148	\$28.67
14ft. 8"	3/4"	0.032	Regular	10/S	SR-HEFB91570-148	\$28.67

Additional Lengths & Coil Stock Also Available!

Call Us Or Visit Our Website For Our Complete Selection!

2010-11 Master Catalog

473

BANDSAW BLADES/HOLE SAWS

CHUCK JAWS
LATHE WORKHOLDING

MACHINE VISES
MAGNETIC CHUCKS

RETENTION KNOBS
ER, DA, TG COLLETS

TOOL HOLDERS
TAP HOLDERS

INDEXABLE DRILLS
TURNING & BORING

ENDMILLS, DRILLS
TAPS & REAMERS

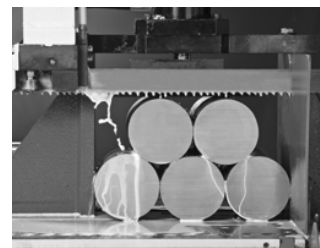
ABRASIVES
MEASURING TOOLS

MRO & SAFETY
FLAT STOCK/DRILL ROD

Intenss™ PRO (formerly Gladiator™) Triple Tempered M-42 Cobalt HSS WELDED-TO-LENGTH BANDSAW BLADES

Ideal for intensive production cutting operations across a wide range of metals

- Positive rake angle for optimum cutting efficiency in high-production cutting operations
- Triple tempered M-42 cobalt high speed steel teeth
- Production cutting of steels up to HRc 45, tool and stainless steels, nickel based and nonferrous alloys
- Easy penetration, excellent chip clearance and reduced noise levels
- High quality surface finish and faster and straighter cuts



Starrett®

Length	Width	Thick-ness	TPI	Part Number	Price Each
7ft. 9"	3/4"	0.035	6-10/P	SR-GLAD99206-79	\$49.32
7ft. 9"	3/4"	0.035	8-12/P	SR-GLAD99222-79	\$49.32
7ft. 9"	3/4"	0.035	10-14/P	SR-GLAD99234-79	\$49.32
8ft. 10"	3/4"	0.035	10-14/P	SR-GLAD99206-810	\$54.36
8ft. 10"	1"	0.035	6-10/P	SR-GLAD99206-810	\$54.36
9ft.	3/4"	0.035	8-12/P	SR-GLAD99222-9	\$54.36
10ft.	3/4"	0.035	6-10/P	SR-GLAD99206-10	\$59.40
10ft.	3/4"	0.035	8-12/P	SR-GLAD99222-10	\$59.40
10ft. 10-1/2"	3/4"	0.035	6-10/P	SR-GLAD99206-101	\$64.44
10ft. 10-1/2"	3/4"	0.035	10-14/P	SR-GLAD99234-101	\$64.44
10ft. 10-1/2"	1"	0.035	4-6/P	SR-GLAD99907-101	\$72.36
10ft. 10-1/2"	1"	0.035	6-10/P	SR-GLAD99318-101	\$72.36
10ft. 10-1/2"	1"	0.035	8-12/P	SR-GLAD99329-101	\$72.36
10ft. 10-1/2"	1"	0.035	10-14/P	SR-GLAD99334-101	\$72.36
11ft.	1"	0.035	4-6/P	SR-GLAD99907-11	\$72.36
11ft.	1"	0.035	6-10/P	SR-GLAD99318-11	\$72.36
11ft.	1"	0.035	8-12/P	SR-GLAD99329-11	\$72.36
11ft. 5"	1"	0.035	8-12/P	SR-GLAD99329-115	\$75.24
11ft. 6"	3/4"	0.035	10-14/P	SR-GLAD99334-116	\$75.24
11ft. 6"	1"	0.035	3-4/P	SR-GLAD99906-116	\$75.24
11ft. 6"	1"	0.035	4-6/P	SR-GLAD99907-116	\$75.24
11ft. 6"	1"	0.035	6-10/P	SR-GLAD99318-116	\$75.24
11ft. 6"	1"	0.035	8-12/P	SR-GLAD99329-116	\$75.24
11ft. 6"	1"	0.035	10-14/P	SR-GLAD99334-116	\$75.24

Length	Width	Thick-ness	TPI	Part Number	Price Each
12ft.	1"	0.035	3-4/P	SR-GLAD99906-12	\$78.12
12ft.	1"	0.035	4-6/P	SR-GLAD99907-12	\$78.12
12ft.	1"	0.035	5-8/P	SR-GLAD99908-12	\$78.12
12ft.	1"	0.035	6-10/P	SR-GLAD99318-12	\$78.12
12ft. 6"	1"	0.035	3-4/P	SR-GLAD99906-126	\$81.00
12ft. 6"	1"	0.035	4-6/P	SR-GLAD99907-126	\$81.00
12ft. 6"	1"	0.035	8-12/P	SR-GLAD99329-126	\$81.00
12ft. 6"	1"	0.035	10-14/P	SR-GLAD99334-126	\$81.00
13ft. 6"	1"	0.035	4-6/P	SR-GLAD99318-136	\$86.76
13ft. 6"	1"	0.035	5-8/P	SR-GLAD99908-136	\$86.76
13ft. 6"	1"	0.035	6-10/P	SR-GLAD99318-136	\$86.76
13ft. 6"	1-1/4"	0.042	3-4/P	SR-GLAD99913-136	\$107.55
13ft. 6"	1-1/4"	0.042	4-6/P	SR-GLAD99914-136	\$107.55
13ft. 6"	1-1/4"	0.042	5-8/P	SR-GLAD99915-136	\$107.55
14ft. 6"	1"	0.035	6-10/P	SR-GLAD99318-146	\$93.87
14ft. 6"	1"	0.035	8-12/P	SR-GLAD99329-146	\$93.87
14ft. 6"	1"	0.035	10-14/P	SR-GLAD99334-146	\$93.87
14ft. 6"	1-1/4"	0.042	2-3/P	SR-GLAD99912-146	\$114.75
14ft. 6"	1-1/4"	0.042	3-4/P	SR-GLAD99913-146	\$114.75
14ft. 6"	1-1/4"	0.042	4-6/P	SR-GLAD99914-146	\$114.75
14ft. 6"	1-1/4"	0.042	5-8/P	SR-GLAD99915-146	\$114.75

**Additional Lengths & Coil Stock
Also Available! Please Call For More Information!**

FASTCUT™ VARIABLE PITCH HOLE SAWS All Purpose Saws With Bi-Metal HSS Teeth

Exceptionally strong and shatter resistant, Fastcut™ Variable Pitch Holesaws cut a wide variety of materials, including wood, metal and steel. They are suitable for hand held drills or in fixed applications, such as a stationary press.

- Ideal for light to medium production on carbon and alloy steels, stainless steels
- Cutting depth of 1-5/8"
- Variable pitch teeth (4-6 tooth)
- Carbide tipped hole saws also available



Starrett®

HOLE SAW ARBORS

Each arbor is furnished with a high speed steel pilot drill. A set screw in the body allow for easy replacement of the pilot drill.



Hole Saw Diameter	Part Number	Price Each
9/16"	STR-55078	\$8.00
5/8"	STR-55079	\$7.04
3/4"	STR-55081	\$7.04
13/16"	STR-55082	\$7.04
7/8"	STR-55083	\$7.04
1"	STR-55085	\$7.44
1-1/16"	STR-55086	\$7.44
1-1/8"	STR-55087	\$7.44
1-3/16"	STR-55088	\$7.44
1-1/4"	STR-55089	\$8.08
1-3/8"	STR-55091	\$8.08
1-1/2"	STR-55093	\$8.08
1-5/8"	STR-55095	\$9.40
1-7/8"	STR-55099	\$9.40
2"	STR-55100	\$9.40
2-1/8"	STR-55102	\$11.48
2-1/4"	STR-55103	\$11.48
2-3/8"	STR-55105	\$12.16

Hole Saw Diameter	Part Number	Price Each
2-1/2"	STR-55106	\$12.16
2-5/8"	STR-55108	\$12.16
2-3/4"	STR-55109	\$13.68
2-7/8"	STR-55110	\$13.68
3"	STR-55111	\$13.68
3-1/8"	STR-55112	\$13.68
3-1/4"	STR-55113	\$14.72
3-1/2"	STR-55115	\$14.72
3-3/4"	STR-55117	\$19.44
4"	STR-55119	\$21.60
4-1/8"	STR-55120	\$21.60
4-1/4"	STR-55121	\$34.48
4-3/8"	STR-55122	\$34.48
4-1/2"	STR-55123	\$48.08
4-3/4"	STR-55124	\$48.08
5"	STR-55125	\$51.20
5-1/2"	STR-55126	\$58.96
6"	STR-55127	\$65.92

Saw Dia.	Thread	Chuck Size	Shank	Part Number	Price Each
9/16" - 1-3/16"	1/2"-20	3/8"	11/32" Hex	STR-55141	\$9.40
		1/4"	1/4" Round	STR-55144	\$6.56
1-1/4 - 8-9/32"	5/8"-18	3/8"	11/32" Hex	STR-56615	\$13.04
		1/2"	7/16" Round	STR-55142	\$14.24

Call Us Today For All Of Your Machine Tool Needs!

BANDSAW BLADES/HOLE SAW KITS

C

BROADBAND® Bi-Metal High Speed Steel WELDED-TO-LENGTH BANDSAW BLADES



Ideal for production to general purpose cutting operations across a wide range of metals.

- M42 high speed edge improves wear resistance
- Oversized blade width increases beam strength
- Ideal for carbon, chrome, tool, die and stainless steels, nickel base steel, pipe and tube and mixed metal applications
- BroadBand delivers faster cutting rates, better cut finishes and longer blade life compared to other blades
- Designed for steel service centers, medium and large manufacturers, fabricators, maintenance shops, job shops and tool & die shops

BROADBAND®



WELDED TO LENGTH!

Length	Width	Thick-ness	TPI	Part Number	Blade Price
7ft. 9"	3/4"	0.035	5-8/S	SI-64361008-79	\$40.07
9ft. 11"	1"	0.035	5-8/S	SI-64364908-911	\$53.90
10ft. 5"	3/4"	0.035	4-6/S	SI-64360008-105	\$49.85
10ft. 5"	3/4"	0.035	5-8/S	SI-64361008-105	\$49.85
10ft. 10-1/2"	3/4"	0.035	5-8/S	SI-64361008-101	\$51.81
10ft. 10-1/2"	1"	0.035	4-6/S	SI-64364608-101	\$58.41
10ft. 10-1/2"	1"	0.035	5-8/S	SI-64364908-101	\$58.41
11ft.	3/4"	0.035	4-6/S	SI-64360008-11	\$51.81
11ft.	3/4"	0.035	5-8/S	SI-64361008-11	\$51.81
11ft.	1"	0.035	4-6/S	SI-64364608-11	\$58.41
11ft.	1"	0.035	5-8/S	SI-64364908-11	\$58.41
11ft. 3"	1"	0.035	4-6/S	SI-64364608-113	\$60.66
11ft. 5"	3/4"	0.035	5-8/S	SI-64361008-115	\$53.76
11ft. 5"	1"	0.035	5-8/S	SI-64364908-115	\$60.66
11ft. 6"	3/4"	0.035	4-6/S	SI-64360008-116	\$55.72
11ft. 6"	3/4"	0.035	5-8/S	SI-64361008-116	\$55.72
11ft. 6"	1"	0.035	4-6/S	SI-64364608-116	\$62.92
11ft. 6"	1"	0.035	5-8/S	SI-64364908-116	\$62.92
11ft. 6"	1-1/4"	0.042	4-6/S	SI-64371208-116	\$73.38
11ft. 6"	1-1/4"	0.042	5-8/S	SI-64371508-116	\$73.38
12ft.	1"	0.035	3-4/S	SI-64364308-12	\$62.92
12ft.	1"	0.035	4-6/S	SI-64364608-12	\$62.92
12ft.	1"	0.035	5-8/S	SI-64364908-12	\$62.92
12ft.	1-1/4"	0.042	3-4/S	SI-64370008-12	\$73.38
12ft.	1-1/4"	0.042	4-6/S	SI-64371208-12	\$73.38
12ft.	1-1/4"	0.042	5-8/S	SI-64371508-12	\$73.38
12ft. 6"	1"	0.035	3-4/S	SI-64364308-126	\$67.43
12ft. 6"	1"	0.035	4-6/S	SI-64364608-126	\$67.43
12ft. 6"	1"	0.035	5-8/S	SI-64364908-126	\$67.43
12ft. 6"	1-1/4"	0.042	4-6/S	SI-64371208-126	\$78.77

Length	Width	Thick-ness	TPI	Part Number	Blade Price
12ft. 10"	1"	0.035	4-6/S	SI-64364608-121	\$67.43
13ft.	1"	0.035	4-6/S	SI-64364608-13	\$67.43
13ft. 6"	1"	0.035	3-4/S	SI-64364308-136	\$71.94
13ft. 6"	1"	0.035	4-6/S	SI-64364608-136	\$71.94
13ft. 6"	1"	0.035	5-8/S	SI-64364908-136	\$71.94
13ft. 6"	1-1/4"	0.042	3-4/S	SI-64370008-136	\$84.15
13ft. 6"	1-1/4"	0.042	4-6/S	SI-64371208-136	\$84.15
13ft. 6"	1-1/4"	0.042	5-8/S	SI-64371508-136	\$84.15
14ft. 6"	1"	0.035	3-4/S	SI-64364308-146	\$76.46
14ft. 6"	1"	0.035	4-6/S	SI-64364608-146	\$76.46
14ft. 6"	1"	0.035	5-8/S	SI-64364908-146	\$76.46
14ft. 6"	1-1/4"	0.042	3-4/S	SI-64370008-146	\$89.54
14ft. 6"	1-1/4"	0.042	4-6/S	SI-64371208-146	\$89.54
14ft. 8"	3/4"	0.035	4-6/S	SI-64360008-148	\$67.46
14ft. 8"	3/4"	0.035	5-8/S	SI-64361008-148	\$67.46
15ft.	1-1/4"	0.042	3-4/S	SI-64370008-15	\$89.54
15ft.	1-1/4"	0.042	4-6/S	SI-64371208-15	\$89.54
15ft. 6"	1"	0.035	4-6/S	SI-64364608-156	\$80.97
15ft. 6"	1-1/4"	0.042	3-4/S	SI-64370008-156	\$94.92
15ft. 6"	1-1/4"	0.042	4-6/S	SI-64371208-156	\$94.92
15ft. 6"	1-1/4"	0.042	5-8/S	SI-64371508-156	\$94.92
15ft. 8"	1-1/4"	0.042	4-6/S	SI-64371208-158	\$94.92
15ft. 8"	1-1/4"	0.042	5-8/S	SI-64371508-158	\$94.92
16ft. 2"	1-1/4"	0.042	4-6/S	SI-64371208-162	\$97.61

**Additional Lengths And Coil Stock
Also Available! Please Call For More Information!**

HOLE SAW KITS



Simonds Bi-metal and carbide hole saw kits are specially packaged to satisfy the specific needs of a variety of professionals. Each kit comes complete with necessary arbors and drills. Individual hole saws also available.



Description	Part Number	Price
Electrician's Hole Saw Kit Kit Contents: (1) each: 7/8", 1-1/8", 1-3/8", 1-3/4", 2" and 2-1/2" hole saws, (1) 7/16" hex arbor, (1) 7/16" quick change arbor and (1) 1/4" pilot drill	SI-36-2000	\$134.58
Journeyman's Hole Saw Kit Kit Contents: (1) each: 3/4", 7/8", 1-1/8", 1-3/8", 1-1/2", 1-3/4", 2", 2-1/4" and 2-1/2" hole saws, (1) 1/4" round arbor, (1) 7/16" quick change arbor, (1) 1/4" arbor adapter and (1) 1/4" pilot drill	SI-36-2700	\$174.08
Carbide Tipped Hole Saw Kit Same sizes as Journeyman's Kit but with carbide tipped hole saws	SI-36-3971	\$287.28
Maintenance Hole Saw Kit Kit Contents: (1) each: 7/8", 1", 1-1/8", 1-1/4" and 1-1/2" hole saws, (1) 1/4" round arbor and (1) 1/4" arbor adapter	SI-36-2600	\$76.90

Call Us Or Visit Our Website For Our Complete Selection!

2010-11 Master Catalog

475

LATHES CHUCKS
LIVE CENTERS

WISE JAWS
WISE ACCESSORIES

STRAIGHT SHANK
COLLET HOLDERS

LATHES BUSHINGS
DRILL CHUCKS

CARBIDE INSERTS
THREADING/GROOVING

CUTTING TOOLS
MACHINERY

PRECISION TOOLS
DEBURRING

COOLANT/FLUIDS
TOOL STORAGE