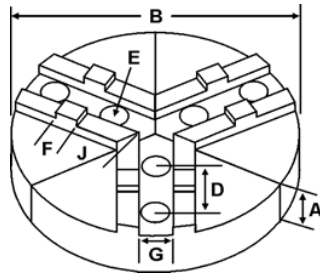
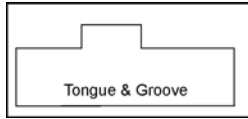
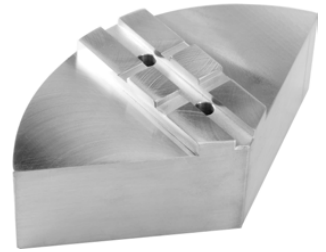


# ROUND JAWS- AMERICAN STANDARD TONGUE & GROOVE

FOR USE ON: **Buck, Bison, BTC, Cushman, Huron, PBA, SCA, Yuasa, Rohm Chucks**



- American Standard Tongue & Groove
- Round Jaws allow for complete gripping of workpiece
- Oversized jaws available
- Ideal for thin-walled or irregular shaped workpieces.
- Can be machined to fit workpiece
- All jaws have 2 holes
- Special "J" dimensions available
- Available in Aluminum & Cast Iron
- **Made in the USA**



Group

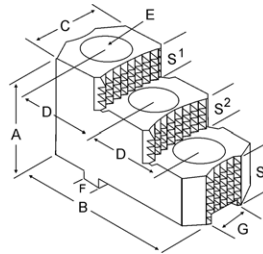
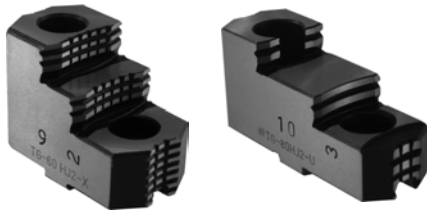


## OFF-CENTER TONGUE

Group No.	Chuck Size	Type	Critical Dimensions				ALUMINUM			CAST IRON			
			Groove Width G	Tongue Width F	Screw Size E	Hole Space D	Part Number	Price Set Of 3	Part Number	Price Set Of 3			
TI-50-5/8-30	15	MEDIUM DUTY	0.500	0.750	5/8	3.000	3.370	12	2.00	12-RTG-15200A	\$177.32	-	-
									4.00	12-RTG-15400A	\$351.92	-	-
							3.785	15	2.50	RTG-15250A	\$392.31	RTG-15250CI	\$447.98
									4.00	RTG-15400A	\$481.98	-	-
									5.00	RTG-15500A*	\$753.41	-	-
							4.100	18	2.50	18-RTG-15250A	\$499.84	-	-
									4.00	18-RTG-15400A	\$674.80	-	-
							4.550	21	2.50	21-RTG-15250A	\$719.47	-	-
									4.00	21-RTG-15400A	\$899.87	-	-
							3.825	24	2.50	24-RTG-15250A	\$867.50	-	-
4.00	24-RTG-15400A	\$1252.35	-	-									
TI-50-3/4-30	15	HEAVY DUTY	0.500	0.750	3/4	3.000	3.785	15	2.50	RTG-15255A	\$392.31	RTG-15255CI	\$447.98
									4.00	RTG-15405A	\$481.98	-	-
									5.00	RTG-15505A*	\$753.41	-	-
							4.100	18	2.50	18-RTG-15255A	\$499.84	-	-
									4.00	18-RTG-15405A	\$674.80	-	-
							4.550	21	2.50	21-RTG-15255A	\$719.47	-	-
									4.00	21-RTG-15405A	\$899.87	-	-
							3.785	24	2.50	24-RTG-15255A	\$867.50	-	-
									4.00	24-RTG-15405A	\$1252.35	-	-
									3.00	12-RTG-18300A*	\$292.45	-	-
							5.100	18	6.00	12-RTG-18600A*	\$517.03	-	-
									2.50	RTG-18250A	\$499.84	-	-
									4.00	RTG-18400A	\$674.80	-	-
									2.50	21-RTG-18250A	\$719.47	-	-
4.00	21-RTG-18400A	\$899.87	-	-									
2.50	24-RTG-18250A	\$867.50	-	-									
24	24	4.00	24-RTG-18400A	\$1252.35	-	-							
		4.00	RTG-24400A	\$1252.35	-	-							
TI-50-7/8-30	18 & Up	HEAVY DUTY	0.500	0.750	7/8	3.000	5.000	24	4.00	RTG-24400A	\$1252.35	-	-

Round Jaw Material: ALUMINUM-6061-T6 Bar Stock, CAST IRON-Gray, STEEL-1018. 18" & Larger- Aluminum Casting T6  
For complete list of applicable chucks, see pages 632-644.\* denotes non-stock item. Please allow 1 week manufacturing time.

## HARD JAWS-2 STEP



### FEATURES:

- Designed for first operation roughing, expect standard runout between 0.005-0.010
- Reversible-suitable for OD & ID workholding.
- GRIP-RITE-OEM style hard jaws have ground tips and provide better runout.
- XTRA BITE -very aggressive bite. Has conical teeth for extra gripping power and ground body to provide improved runout.

Group	Chuck Size	Type	Critical Dimensions				Width Inch C	OAL Inch B	Height Inch A	No. of Holes	No. of Steps	Top Step Ht S1	Mid Step Ht S2	Bot Step Ht S3	Part Number	Price Per Set	Code
			Groove Width G	Tongue Width F	Screw Size E	Hole Space D											
TI-50-5/8-30	15 & UP	MEDIUM DUTY	0.500	0.750	5/8	3.000	1.980	5.392	2.613	2	2	0.551	0.551	1.511	TG-150HJ2-U	\$470.25	E
							2.500	5.350	3.469	2	2	0.950	0.950	1.569	TG-150HJ2-X	\$495.00	E
TI-50-3/4-30	15 & UP	HEAVY DUTY	0.500	0.750	3/4	3.000	2.500	5.350	3.469	2	2	0.950	0.950	1.569	TG-155HJ2-X	\$550.00	E

Call Us Today For All Of Your Machine Tool Needs!

# SOFT JAWS- AMERICAN STANDARD TONGUE & GROOVE

C

LATHE CHUCKS  
LIVE CENTERS

WISE JAWS  
WISE ACCESSORIES

STRAIGHT SHANK  
COLLET HOLDERS

LATHE BUSHINGS  
DRILL CHUCKS

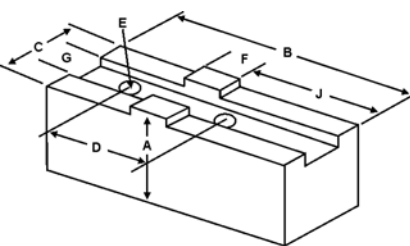
CARBIDE INSERTS  
THREADING/GROOVING

CUTTING TOOLS  
MACHINERY

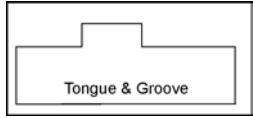
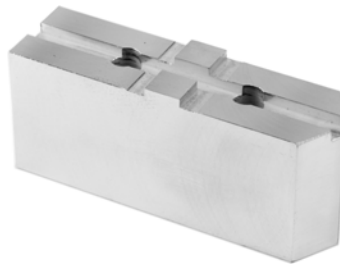
PRECISION TOOLS  
DEBURRING

COOLANT/FLUIDS  
TOOL STORAGE

FOR USE ON: **Buck, Bison, BTC, Cushman, Huron, PBA, Yuasa & Rohm Chucks**



- American Standard Tongue & Groove
- Supplies maximum concentricity on finish turning operations
- Can be bored or turned to fit workpiece
- Steel jaws can be hardened
- Available flat ended or pointed for smaller diameter parts
- Special orders available
- Available in Aluminum, Steel & Aircraft Aluminum (where noted)
- **Made in the USA**

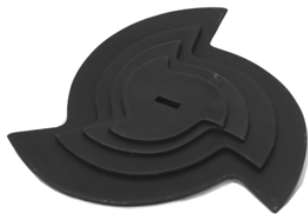


**QUANTITY DISCOUNTS!**  
Order **5 SETS OR MORE** of the same part number soft jaw and receive a **5% DISCOUNT!**

Group No.	Chuck Size	Type	Critical Dimensions				Tongue to Front J	Tongue Position	Width Inch C	Length Inch B	Hght Inch A	ALUMINUM		STEEL	
			Groove Width G	Tongue Width F	Screw Size E	Hole Space D						FLAT END Part Number	Price Set Of 3	FLAT END Part Number	Price Set Of 3
TI-50-5/8-30	15	MEDIUM DUTY	0.500	0.750	5/8	3.000	2.900	Offset	1.750	5.750	1.50	TG-15150AF	80.82	TG-15150F	86.61
2.00											TG-15200AF	57.25	TG-15200F	60.65	
2.50											TG-15250AF	65.95	TG-15250F	69.76	
3.00				TG-15300AF	77.48	TG-15300F	81.87								
4.00				TG-15400AF	86.53	TG-15400F	90.97								
2.00				TG-15252AF	78.95	TG-15252F	83.39								
						3.350	Offset	2.000	6.250	4.00	TG-15402AF	108.15	TG-15402F	113.71	
			0.750	5/8	3.000	Centered	Centered	2.500	5.188	2.50	TG-15258AF*	75.57	TG-15258F*	78.00	
										5.00	TG-15508AF*	161.98	TG-15508F*	160.75	
TI-50-3/4-30	15	15" W & S	0.500	0.750	3/4	3.000	3.000	Offset	2.000	5.75	3.50	TG-15359AF*	93.71	TG-15359F*	98.76
											5.00	TG-15509AF*	133.87	TG-15509F*	141.08
TI-50-3/4-30	15	HEAVY DUTY	0.500	0.750	3/4	3.000	2.900	Offset	1.750	5.750	2.50	TG-15255AF	68.76	TG-15255F	72.77
3.00											TG-15305AF	71.88	TG-15305F	77.98	
4.00											TG-15405AF	89.32	TG-15405F	94.00	
2.50							TG-15256AF	79.35	TG-15256F	83.39					
3.200							Offset	2.500	6.000	4.00	TG-15406AF	108.80	TG-15406F	113.71	
										4.00	TG-18400AF	115.69	TG-18400F	121.29	
										5.00	TG-18500AF	162.00	TG-18500F	160.00	
TI-50-3/4-30	18		0.500	0.750	3/4	3.000	3.660	Offset	2.250	6.500	2.50	TG-18252AF	107.51	TG-18252F	113.71
4.00											TG-18402AF	115.79	TG-18402F	125.63	
5.00											TG-18502AF	208.71	TG-18502F	180.85	
2.50				TG-18256AF	114.51	TG-18256F	121.29								
5.00				TG-18506AF	159.14	TG-18506F	235.52								
3.00				TG-18308AF*	166.96	TG-18308F*	177.74								
			0.500	3/4	3.000	Centered	Centered	3.000	5.188	5.00	TG-18508AF*	217.09	TG-18508F*	190.22	
TI-50-3/4-30	18	18" W & S	0.500	0.750	3/4	3.000	3.000	Offset	2.500	6.000	3.50	TG-18359AF*	140.25	TG-18359F*	148.37
											5.00	TG-18509AF*	200.36	TG-18509F*	211.97
TI-50-7/8-30	24	HEAVY DUTY	0.500	0.750	7/8	3.000	4.500	Offset	3.000	7.500	3.00	TG-24300AF	239.79	TG-24300F	232.88
											5.00	TG-24500AF	316.43	TG-24500F	307.19

For "Pointed" Soft Jaws, please substitute "P" for "F" in the part number. Example: TG-15150AF will be TG-15150AP. For Pointed Jaws add \$6.50.  
Soft Jaw Material: ALUMINUM-6061-T6 Bar Stock, STEEL-1018, "B" JAWS-7075-T6 Aircraft Aluminum  
For complete list of applicable chucks, see pages 632-644. \* denotes non-stock item. Please allow 1 week manufacturing time.

## BORING STARS



- FEATURES:**
- Save set-up time.
  - Obtain any diameter
  - Easily and quickly.
  - Reduces soft jaw costs.
  - Allows straight through boring of soft jaws.

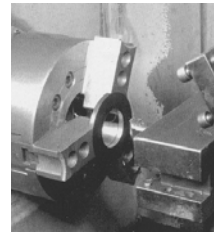
Set of 4 Boring Stars

Part # JBT-100  
**\$27.00/set**

## ANTI-BACKLASH RING SET



A valuable time saver for your lathes and turning centers! Every ring you will ever need for boring out your soft jaws on one convenient wooden rack.



Description	Number of Rings	Size	Part Number	Price
Standard Set	48	1 to 3-15/16 (1/16 inc.)	AI-220-00	\$283.48
Short Stack	16	1 to 1-15/16 (1/16 inc.)	AI-220-10	\$82.26

Call Us Or Visit Our Website For Our Complete Selection!

2010-11 Master Catalog