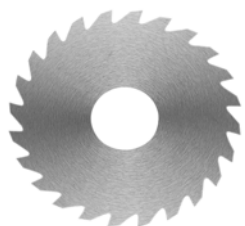


# SOLID CARBIDE SAWS

C

## SOLID CARBIDE SAWS



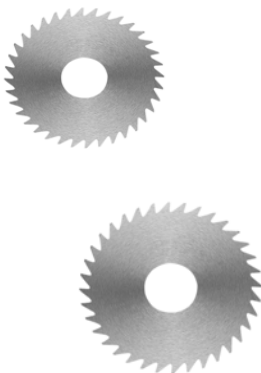
### APPLICATION GUIDELINES

- If depth of cut exceeds 3 times saw thickness double standard concavity is recommended.
- If depth of cut exceeds 5 times saw thickness alternate tooth chamfer is recommended.
- Saw diameter concentricity should be within .001" when assembled on arbor.
- When using more than one saw at a time, a flat and parallel hub should be used to ensure proper spacing.
- If steel flanges are used, select the largest diameter possible.
- Keyways (generally not used with solid carbide slitting saws) also available.

### CUSTOM CARBIDE SAWS

- Please call for quotes on special orders.
- Special Cutting Diameters
  - Special Thicknesses
  - Special Arbor Hole Sizes and Keyways
  - Special Chamfers, Angles or Radii
  - Special Tooth Configurations and Pitches

Thickness	3/4" dia 1/4" Hole 10 or 20 teeth		1" dia 3/8" Hole 12 or 24 Teeth		1 1/4" dia 1/2" Hole 16 or 36 teeth		1 1/2" dia 1/2" Hole 16 or 36 teeth		1 3/4" dia 1/2", 5/8" or 7/8" Hole 24 or 36 teeth	
	Part Number	Price	Part Number	Price	Part Number	Price	Part Number	Price	Part Number	Price
.0020	ROB-C07002	\$111.62	ROB-C10002	\$127.74	ROB-C12002	\$165.42	ROB-C15002	\$189.04	ROB-C17002	\$212.51
.0040	ROB-C07004	\$102.07	ROB-C10004	\$102.07	ROB-C12004	\$132.25	ROB-C15004	\$151.36	ROB-C17004	\$170.03
.0060	ROB-C07006	\$81.63	ROB-C10006	\$68.16	ROB-C12006	\$88.40	ROB-C15006	\$100.79	ROB-C17006	\$113.58
.0080	ROB-C07008	\$54.49	ROB-C10008	\$61.15	ROB-C12008	\$71.25	ROB-C15008	\$81.39	ROB-C17008	\$91.48
.0100	ROB-C07010	\$47.24	ROB-C10010	\$61.15	ROB-C12010	\$71.25	ROB-C15010	\$81.39	ROB-C17010	\$91.48
.0120	ROB-C07012	\$46.45	ROB-C10012	\$48.02	ROB-C12012	\$54.93	ROB-C15012	\$69.97	ROB-C17012	\$79.77
.0140	ROB-C07014	\$36.70	ROB-C10014	\$48.02	ROB-C12014	\$54.93	ROB-C15014	\$69.97	ROB-C17014	\$79.77
.0156	ROB-C07016	\$36.70	ROB-C10016	\$48.02	ROB-C12016	\$54.93	ROB-C15016	\$69.97	ROB-C17016	\$79.77
.0180	ROB-C07018	\$36.70	ROB-C10018	\$48.02	ROB-C12018	\$54.93	ROB-C15018	\$69.97	ROB-C17018	\$79.77
.0200	ROB-C07020	\$36.70	ROB-C10020	\$40.62	ROB-C12020	\$48.56	ROB-C15020	\$57.13	ROB-C17020	\$74.09
.0230	ROB-C07023	\$31.95	ROB-C10023	\$40.62	ROB-C12023	\$48.56	ROB-C15023	\$57.13	ROB-C17023	\$74.09
.0250	ROB-C07025	\$31.95	ROB-C10025	\$40.62	ROB-C12025	\$48.56	ROB-C15025	\$57.13	ROB-C17025	\$74.09
.0280	ROB-C07028	\$31.95	ROB-C10028	\$40.62	ROB-C12028	\$48.56	ROB-C15028	\$57.13	ROB-C17028	\$74.09
.0312	ROB-C07032	\$26.66	ROB-C10032	\$37.29	ROB-C12032	\$37.68	ROB-C15032	\$49.93	ROB-C17032	\$64.63
.0350	ROB-C07035	\$26.66	ROB-C10035	\$37.29	ROB-C12035	\$37.68	ROB-C15035	\$49.93	ROB-C17035	\$64.63
.0400	ROB-C07040	\$26.66	ROB-C10040	\$37.29	ROB-C12040	\$37.68	ROB-C15040	\$49.93	ROB-C17040	\$64.63
.0468	ROB-C07045	\$32.00	ROB-C10045	\$40.52	ROB-C12045	\$40.77	ROB-C15045	\$51.79	ROB-C17045	\$68.16
.0510	ROB-C07051	\$32.00	ROB-C10051	\$40.52	ROB-C12051	\$40.77	ROB-C15051	\$51.79	ROB-C17051	\$68.16
.0625	ROB-C07062	\$32.00	ROB-C10062	\$40.52	ROB-C12062	\$40.77	ROB-C15062	\$51.79	ROB-C17062	\$68.16
.0781	ROB-C07078	\$41.65	ROB-C10078	\$51.01	ROB-C12078	\$49.88	ROB-C15078	\$62.77	ROB-C17078	\$76.39
.0937	ROB-C07092	\$46.31	ROB-C10092	\$56.60	ROB-C12092	\$60.81	ROB-C15092	\$71.44	ROB-C17092	\$80.26
.1250	ROB-C07125	\$60.56	ROB-C10125	\$75.66	ROB-C12125	\$77.96	ROB-C15125	\$76.95	ROB-C17125	\$97.31
.1562	ROB-C07156	\$81.39	ROB-C10156	\$90.26	ROB-C12156	\$95.80	ROB-C15156	\$102.41	ROB-C17156	\$104.71
.1875	ROB-C07187	\$86.24	ROB-C10187	\$94.18	ROB-C12187	\$99.47	ROB-C15187	\$105.27	ROB-C17187	\$124.85
.2500	ROB-C07250	\$107.41	ROB-C10250	\$108.83	ROB-C12250	\$123.48	ROB-C15250	\$123.97	ROB-C17250	\$151.51



### PRICING FOR SPECIAL DECIMAL THICKNESSES

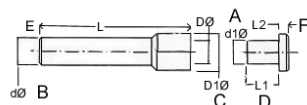
- Find the price of the closest thicker standard saw
- To this, add \$5.00 for one of a size
- Add \$3.50 for two to six of a size
- For 7 or more, there is no additional charge above the base price
- Quantity discounts apply to special thicknesses
- Saws made for gangs with special tolerances are priced on application

Thickness	2" dia 1/2" or 1" Hole 24 or 48 teeth		2 1/4" dia 5/8" Hole 28 or 56 teeth		2 1/2" dia 1" Hole 28 or 56 teeth		2 3/4" dia 1" Hole 30 or 60 teeth		3" dia 1" Hole 30 or 60 Teeth	
	Part Number	Price	Part Number	Price	Part Number	Price	Part Number	Price	Part Number	Price
.0020	ROB-C20002	\$242.21	ROB-C22002	\$253.82	ROB-C25002	\$265.38	ROB-C27002	\$293.41	ROB-C30002	\$305.52
.0040	ROB-C20004	\$193.84	ROB-C22004	\$203.06	ROB-C25004	\$212.12	ROB-C27004	\$234.96	ROB-C30004	\$244.46
.0060	ROB-C20006	\$129.36	ROB-C22006	\$135.58	ROB-C25006	\$141.76	ROB-C27006	\$156.65	ROB-C30006	\$163.22
.0080	ROB-C20008	\$104.42	ROB-C22008	\$108.83	ROB-C25008	\$114.42	ROB-C27008	\$126.37	ROB-C30008	\$131.71
.0100	ROB-C20010	\$104.42	ROB-C22010	\$108.83	ROB-C25010	\$114.42	ROB-C27010	\$126.37	ROB-C30010	\$131.71
.0120	ROB-C20012	\$86.39	ROB-C22012	\$93.93	ROB-C25012	\$102.51	ROB-C27012	\$118.09	ROB-C30012	\$124.07
.0140	ROB-C20014	\$86.39	ROB-C22014	\$93.93	ROB-C25014	\$102.51	ROB-C27014	\$118.09	ROB-C30014	\$124.07
.0156	ROB-C20016	\$86.39	ROB-C22016	\$93.93	ROB-C25016	\$102.51	ROB-C27016	\$118.09	ROB-C30016	\$124.07
.0180	ROB-C20018	\$86.39	ROB-C22018	\$93.93	ROB-C25018	\$102.51	ROB-C27018	\$118.09	ROB-C30018	\$124.07
.0200	ROB-C20020	\$79.23	ROB-C22020	\$86.14	ROB-C25020	\$93.84	ROB-C27020	\$107.85	ROB-C30020	\$120.05
.0230	ROB-C20023	\$79.23	ROB-C22023	\$86.14	ROB-C25023	\$93.84	ROB-C27023	\$107.85	ROB-C30023	\$120.05
.0250	ROB-C20025	\$79.23	ROB-C22025	\$86.14	ROB-C25025	\$93.84	ROB-C27025	\$107.85	ROB-C30025	\$120.05
.0280	ROB-C20028	\$79.23	ROB-C22028	\$86.14	ROB-C25028	\$93.84	ROB-C27028	\$107.85	ROB-C30028	\$120.05
.0312	ROB-C20032	\$69.14	ROB-C22032	\$79.53	ROB-C25032	\$90.70	ROB-C27032	\$104.08	ROB-C30032	\$117.55
.0350	ROB-C20035	\$69.14	ROB-C22035	\$79.53	ROB-C25035	\$90.70	ROB-C27035	\$104.08	ROB-C30035	\$117.55
.0400	ROB-C20040	\$69.14	ROB-C22040	\$79.53	ROB-C25040	\$90.70	ROB-C27040	\$104.08	ROB-C30040	\$117.55
.0468	ROB-C20045	\$71.34	ROB-C22045	\$83.79	ROB-C25045	\$97.07	ROB-C27045	\$111.48	ROB-C30045	\$124.36
.0510	ROB-C20051	\$71.34	ROB-C22051	\$83.79	ROB-C25051	\$97.07	ROB-C27051	\$111.48	ROB-C30051	\$124.36
.0625	ROB-C20062	\$71.34	ROB-C22062	\$83.79	ROB-C25062	\$97.07	ROB-C27062	\$111.48	ROB-C30062	\$124.36
.0781	ROB-C20078	\$80.75	ROB-C22078	\$98.49	ROB-C25078	\$117.31	ROB-C27078	\$135.19	ROB-C30078	\$151.31
.0937	ROB-C20092	\$86.98	ROB-C22092	\$104.86	ROB-C25092	\$123.58	ROB-C27092	\$143.77	ROB-C30092	\$162.97
.1250	ROB-C20125	\$101.72	ROB-C22125	\$118.29	ROB-C25125	\$135.88	ROB-C27125	\$173.85	ROB-C30125	\$207.27
.1562	ROB-C20156	\$117.75	ROB-C22156	\$141.66	ROB-C25156	\$166.80	ROB-C27156	\$207.61	ROB-C30156	\$229.96
.1875	ROB-C20187	\$147.25	ROB-C22187	\$168.76	ROB-C25187	\$183.06	ROB-C27187	\$230.59	ROB-C30187	\$248.58
.2500	ROB-C20250	\$174.39	ROB-C22250	\$202.81	ROB-C25250	\$222.12	ROB-C27250	\$263.57	ROB-C30250	\$296.89

## SAW ARBORS

### TOLERANCES

- DØ - +.0002" / -.0003"
- D1Ø - +/- .003"
- dØ - -.0001" / -.0002"
- L - +/- .060"
- d1Ø - +.0000" / -.0002"
- L1 - +.060" / -.000"
- L2 - +.060" / -.000"



- Total thickness of saws/ spacers should not exceed 50% of L1 dimension.
- Arbor caps with longer L1 dimension available.

DØ	d1Ø	dØ	D1Ø	L1	L	L2	Part Number	Set Price
1/4	1/2	1/2	3/8	2- 7/8	3/16	ROB-AB250	\$136.02	
3/8	1/2	5/8	3/8	2- 7/8	1/4	ROB-AB375	\$154.06	
1/2	1/2	3/4	1/2	2- 7/8	3/16	ROB-AB500	\$172.24	
5/8	3/4	1	7/8	4	1/4	ROB-AB625	\$172.24	
7/8	3/4	1-1/4	1	4	1/4	ROB-AB875	\$268.77	
1	3/4	1-1/2	1	4	1/4	ROB-AB1000	\$244.95	
1	1	1-1/2	1	5	1/4	ROB-AB1000-1	\$253.77	
1-1/4	1	1-3/4	1- 3/8	5	1/4	ROB-AB1250	\$366.72	

Call Us Or Visit Our Website For Our Complete Selection!

2010-11 Master Catalog

471

LATHES CHUCKS  
LIVE CENTERS  
VISE ACCESSORIES  
VISE JAWS  
STRAIGHT SHANK  
COLLET HOLDERS  
LATHES BUSHINGS  
DRILL CHUCKS  
CARBIDE INSERTS  
THREADING/GROOVING  
CUTTING TOOLS  
MACHINERY  
PRECISION TOOLS  
DEBURRING  
COOLANT/FLUIDS  
TOOL STORAGE