

GRINDERS/BUFFERS/SANDERS

BENCH GRINDERS/BUFFERS

Palmgren Grinders & Buffers feature heavy duty construction with powerful, long-life motor for use all day, every day. Provides 88 plus minutes of continuous use at full load with less than 1% RPM loss from the stated maximum. Capacitor motors supply the extra current required during start-up and running under load. Large diameter armature shaft with shielded bearings for smooth operation and long-life.

Grinders

- Base, motor housing and end-shields made from cast iron, cast aluminum and steel
- CSA NRTL/C certified, OSHA compliant
- For general purpose grinding, including sharpening, shaping, de-burring, stock removal and cleaning of rust and scale
- Dust collection port and hoses on all models except 82061
- Large, cast aluminum tool rests tilt for angle grinding
- Includes tool rest, spark arrestors, eyeshields, one 36 grit and one 60 grit grinding wheel, and 6 ft. (41.8m), 3-conductor power cord

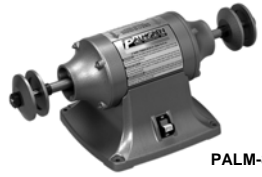
Buffers

- For buffing and polishing on all types of materials
- Includes wheel flanges and 3-conductor power cord

• All models fit PALM-70101 Pedestal Stand



PALM-82081



PALM-82083



Grinders

Wheel Dia	Phase	Wheel Grit	RPM	Motor HP	Voltage (Hertz)	Wheel Bore	Wgt	Part Number	Price Each
6"	1	36/60	3450	1/3	120/240 (60)	1/2"	26 lbs	PALM-82061	\$99.91
8"	1	36/60	3450	3/4	120/240 (60)	5/8"	38 lbs	PALM-82081	\$192.06

Buffer

Wheel Dia	Phase	Wheel Grit	RPM	Motor HP	Voltage (Hertz)	Wheel Bore	Wgt	Part Number	Price Each
8"	1	n/a	3450	3/4	120/240 (60)	5/8"	38 lbs	PALM-82083	\$182.36

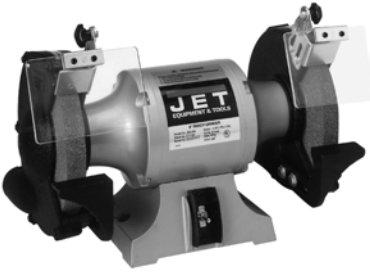
INDUSTRIAL BENCH GRINDERS

FEATURES:

- UL listed
- Totally enclosed, pre-lubricated ball bearings
- Heavy-duty guarded toggle switch on 8" and 10"
- Rubber mounts prevent movement

STANDARD EQUIPMENT

- Cast iron wheel guards and dust vents
- One-piece quick adjusting spark guards
- Large eye shields with quick adjustment
- Adjustable tool rests
- Fine and coarse vitrified grinding wheels included



Call For Our Promotional Pricing!



Part Number	JET-577101	JET-577102	JET-577103
	\$179.00	\$300.00	\$599.00
Model Number	JBG-6A	JBG-8A	JBG-10A
Overall Dimensions	18" x 8-1/2" x 10-1/2"	19" x 10" x 12-1/2"	24-1/2" x 13" x 12-1/4"
Shaft Diameter	1/2"	5/8"	1"
Wheel Diameter	6" x 3/4"	8" x 1"	10" x 1"
Wheel Speed (RPM)	3,450	3,450	1,725
Wheel Grits	36/60	36/60	24/46
Motor	1/2HP, 1Ph, 115V	IMP, 1Ph, 115V	1-1/2HP, 1Ph, 115V
Net Weight	32 lbs	54 lbs	110 lbs

INDUSTRIAL BENCH GRINDERS



FEATURES:

- 1/2 & 1 HP motor quickly removes material
- Adjustable tool rests for controlling the work angle to the wheel
- Adjustable light for highlighting work piece
- Eye shields for clear viewing of grinding operation, adjustable
- Heavy cast metal base increases durability and stability
- Rubber feet for dampening vibration
- On/Off rocker switch



Wheel Dia	Motor (HP)	RPM	Weight	Part Number	Price Each
6"	1/2	3,450	24 lbs	JET-17201	\$179.00
8"	1	3,450	58 lbs	JET-17202	\$269.00

PEDESTAL STAND



PALM-70101

JET-577172



FEATURES:

- Heavy-duty cast iron construction
- Stable, wide stance base
- Fully adjustable platform
- Designed to accommodate most 6", 7" 8" & 10" bench grinders

Call For Our Promotional Pricing!

Vendor	Mounting Surface	Overall Height	Weight	Part Number	Price Each
JET	11" x 10"	31"	46lbs	JET-577172	\$79.00
PALMGREN		31-3/4"	59 lbs	PALM-70101	\$100.30

HEAVY DUTY BENCH GRINDERS



FEATURES:

- Direct drive motor-no brushes or belts to adjust or replace
- Permanently lubricated motor bearings
- Adjustable shatter-resistant plastic eye shields
- Removable wheel covers for easier wheel changes
- Adjustable tool rests
- UL approved, 6' wire cord



Wheel Dia	Motor (HP)	RPM	Power	Part Number	Price Each
6"	1/2	3,500	110 V /1PH	A-7600-0030	\$57.63
8"	3/4	3,500	110 V /1PH	A-7600-0028	\$94.61

Pedestal Stand For Bench Grinder

For 6", 8" & 10" Grinders-34" Overall Height	A-8071-0034	\$49.00
--	-------------	---------

GRINDERGUARD



- Heavy-duty swivel-lock positioning shield protects operator from flying grit and debris.
- Cast frame with virtually unbreakable 3/16" thick Lexan® shield
- One standard frame with a choice of three sizes of interchangeable Lexan® shields will provide protection for grinding and buffing wheels up to 14".
- Extra heavy-duty steel pivot with locking knob connects the frame to the curved adjustable Mounting bracket
- Comes complete with frame, Lexan shield and pivot mount hardware



Grinder Guard w/ Shield

For Bench Grinders	Shield Size	Part Number	Price
6", 7", 8"	5-1/2" x 5-3/4"	FXB-13040	\$99.75
8", 10"	6-1/2" x 5-1/2"	FXB-13041	\$110.00
10" and up	12-3/4" x 11"	FXB-13042	\$119.00

Replacement Shields

Part Number	Price
FXB-13043	\$16.00
FXB-13044	\$24.00
FXB-13045	\$33.00

Call Us Today For All Of Your Machine Tool Needs!

MATERIAL FINISHING

A

INDUSTRIAL COMBINATION BELT & DISC FINISHING MACHINE

- 6" x 48" Belt
- 10" Disc
- Two cast iron tilting tables for mitering applications
- Full access to the belt when tilted in the horizontal position
- Dust collection shrouds on belt and disc
- Quick-release tension mechanism makes belt changes quick and easy
- Removable safety key switch
- Enclosed base protects motor from sanding dust
- Floor stand included (Some assembly required)
- Miter gauge
- Heavy-duty one piece steel stand



Call For Our Promotional Pricing!

JET

Full Line Available!
Please call for more information.

Part Number	JET-414550K
	\$899.00
Belt Size	6" x 48"
Belt Speed (SFPM)	1650
Belt Table Size	6" X 10-1/2"
Disc Size	10"
Disc Speed (RPM)	2100
Disc Table Size	7-1/2" X 13"
Table Tilt	45° Out
Motor	1 HP, 115V, 1Ph
Net Weight	215 lbs

INDUSTRIAL COMBINATION BELT & DISC FINISHING MACHINE

- FEATURES:**
- Belt operates at any angle
 - Powered by a heavy-duty, UL/CSA approved, 1-1/2HP TEFC motor
 - Contour finishing, mitering, flat finishing, beveling and precision finishing
 - Plain and compound miters are easily obtained by using the standard die case aluminum miter gauge
 - Fully machine, balanced disc runs vibration free

- Standard Equipment:**
- Adjustable heavy duty removable platen
 - Removable upper guard for contour finishing
 - Adjustable dust deflector and dust chute
 - Heavy-duty, one-piece steel stand



WILTON

Part Number	WI-4200A	WI-4202A
	\$1879.00	\$1899.00
Belt Size	6" x 48"	6" x 48"
Belt Speed (SFPM)	2850	2850
Belt Table Size	7-3/8" x 14-3/4"	7-3/8" x 14-3/4"
Belt Table Tilt	45° Out, 20° Platen	45° Out, 20° Platen
Disc Size	12"	12"
Disc Speed (RPM)	1960	1960
Disc Table Size	12" x 16-3/8"	12" x 16-3/8"
Disc Table Tilt	45° Out; 20° In	45° Out; 20° In
Miter Gauge Groove	3/8" x 3/4"	3/8" x 3/4"
Motor	1-1/2HP, 115/230V, 1Ph	1-1/2HP, 230V, 3Ph
Net Weight	250 lbs	250 lbs

BENCH TOP BELT/DISC SANDERS

For general purpose sanding and finishing on metal, wood, plastic and other materials. Typical operations include surfacing, finishing, sanding, polishing and deburring. Heavy duty construction for long life. Capacitor motors supply the extra current required during start-up and running under load. Features a belt housing that can be rotated from the vertical to horizontal position for sanding long pieces. Tensioned belt mechanisms provide even sanding surface and allow easy belt changes.

- Features:**
- CA NRTL/C certified and OSHA compliant.
 - Disc table tilts 0°-45° and belt table tilts 0°-90°. Disc table has graduated scale to indicate angle of tilt
 - Includes one medium grit belt, one medium grit PSA sanding disc, miter gauge and 3-conductor power cord

- PALM-81061**
- 6" (152mm) Disc, 2" x 42" (51 x 1067mm) Belt Bench Sander
 - Accepts either 2" x 42" or 1" x 42" belt
 - 1-1/2" dust collection port on both belt and disc housing

- PALM-81091**
- 3" idler drum for contour sanding
 - 2-1/2" dust collection port on both belt and disc housing

Full Line Available!
Please call for more information.



PALMGREN



Belt Size	Belt FPM	Disc Size	Disc RPM	Motor HP	Voltage (Hertz)	Wgt	Part Number	Price Each
2" x 42"	4400	6"	3450	1/3	120/240 (60)	30 lbs	PALM-81061	\$168.78
6" x 48"	2700	9"	3450	1	120/240 (60)	87 lbs	PALM-81091	\$340.47

2" x 42" BENCH BELT & DISC SANDER

WILTON

2" x 42" BENCH BELT & DISC SANDER

NEW ITEM!

JET

- FEATURES:**
- Deluxe miter gauge that turns and locks for common angles 45° both left and right
 - Hinged idler wheel cover
 - 1" x 42" model also available (WI-4002 \$319.00)

Part Number	WI-41002
	\$348.23
Overall Dimensions	20-1/2" x 22-3/4" x 20"
Belt Size	2" x 42"
Belt Speed (SFPM)	3100
Belt Table Size	10" x 6"
Belt & Disc Table Tilt	0 to 45°
Disc Size	8"
Disc Speed (RPM)	3450
Disc Table Size	10-3/4" x 7-1/2"
Dust Col. Outlet	1-1/2"
Motor	3/4HP, 1Ph, 115V
Net Weight	58 lbs



- Hinged idler wheel cover
- Deluxe miter gauge that turns and locks for common angles 45° both left and right
- Also available in 1" x 42" model

Part Number	JET-577004
	\$375.00
Overall Dimensions	20-1/2" x 22-3/4" x 20"
Belt Size	2" x 42"
Belt Speed (SFPM)	3100
Belt Table Size	10" x 6"
Belt & Disc Table Tilt	0 to 45°
Disc Size	8"
Disc Speed (RPM)	3450
Disc Table Size	10-3/4" x 7-1/2"
Dust Col. Outlet	1-1/2"
Motor	3/4HP, 1Ph, 115V
Net Weight	60 lbs



Call Us Or Visit Our Website For Our Complete Selection!

2010-11 Master Catalog

487

LATHES CHUCKS
LIVE CENTERS

VICE JAWS
VICE ACCESSORIES

STRAIGHT SHANK
COLLET HOLDERS

LATHES BUSHINGS
DRILL CHUCKS

CARBIDE INSERTS
THREADING/GROOVING

CUTTING TOOLS
MACHINERY

PRECISION TOOLS
DEBURRING

COOLANT/LUIDS
TOOL STORAGE