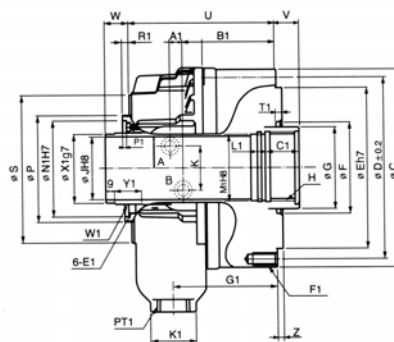
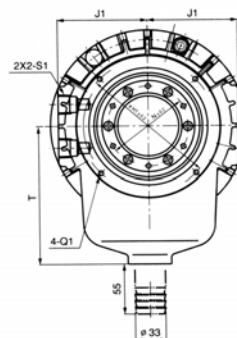
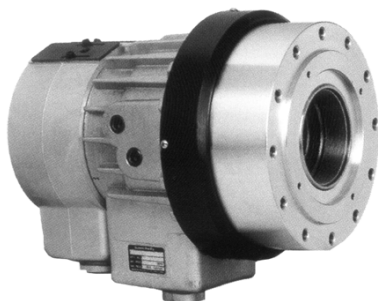


HYDRAULIC CYLINDERS

ROTARY HYDRAULIC CYLINDERS SYH Series-Standard Open-Center Cylinder High Speed Open-centered Hydraulic Cylinders With Built In Lock And Relief Valves



MACHINE VISES
MAGNETIC CHUCKS

RETENTION KNOBS
ER, DA, TG COLLETS

TOOLHOLDERS
TAP HOLDERS

Available I.D.	Cylinder Dia (mm)	Piston Stroke (mm)	Piston Force		Max. Oper. Pressure	Max RPM	GD N-m ² (kgf)	Weight (kgf)	Total Leakage	Industry Model #	Part Number	Price
			Push KN(kgf)	Pull KN(kgf)								
36	105	15	25(2549)	24(2447)	4.0(40.8)	8000	0.43(0.044)	8.6	3.0	S-1036	K-CYSYH-1036-H	\$2,500.00
36,39,40,40,43,45,46	125	15	38(3875)	33(3365)	4.0(40.8)	7000	0.76(0.078)	12.0	3.0	S-1246	K-CYSYH-1246-H	\$2,750.00
46,52,69	155	22	60(6118)	56(5710)	4.0(40.8)	6200	2.06(0.21)	16.8	3.9	S-1552	K-CYSYH-1552-H	\$2,900.00
68,69,75,77	180	25	74(7546)	69(7036)	4.0(40.8)	4700	3.73(0.83)	26.0	4.2	S-1875	K-CYSYH-1877-H	\$3,600.00
78,91	205	30	94(9585)	88(8973)	4.0(40.8)	3800	5.98(0.61)	33.0	4.5	S-2091	K-CYSYH-2091-H	\$4,500.00

Dimensions

Model	B1	C1	E1	F1	G1	H1	J1	K1	L1	M1	N1	P1	Q1	R1	S1	T1	U1	V1	G	X1
SYH-1036	102.5	25	M5x11	6-M10x17	98	88	73	47	15	38	64	4	M5x10	5	PT 3/8	6	158	28	48	42
SYH-1246	126.5	30	M6x9	12-M10x20	135	98	76	47	15	50	76	4	M5x10	6	PT 1/2	6	200	46	65	50
SYH-1552	136	30	M6x9	12-M10x20	145	110	86	47	15	55	85	4	M6x12	7	PT 1/2	6	220	51	70	56
SYH-1877	153.5	35	M6x9	12-M10x20	166.5	155	101	47	15	80	108	4	M6x12	7	PT 1/2	6	242	58	95	81
SYH-2091	168	35	M6x14	12-M12x24	183	165	110	47	15	95	120	4	M6x12	7	PT 1/2	6	267	66	110	96

C	D	E	Hmax.	W1	F	J	K	M	N	P	Q	S	T	U	Vmax.	Vmin	Wmax.	Wmin	Z	A1
135	115	100	M42x1.5	M44x1.5	65	36	30	44.6	55	73	45	104	115	156	15	0	40	25	5	11
155	130	100	M52x2.0	M52x1.5	80	46	36	52.9	64	85	51.5	118	115	184	15	0	40	25	5	11.5
190	170	130	M60x2.0	M58x1.5	85	52	36	59.6	73	96	57	137	130	191	22	0	47	25	5	12
215	190	160	M85x2.0	M84x2.0	120	75	36	84.6	98	121	70	166	160	230	25	0	50	25	5	17.5
240	215	180	M100x2.0	M99x2.0	140	91	34	99.6	108	138	79	182	185	253	30	0	55	25	5	21

INDEXABLE DRILLS
TURNING & BORING

ENDMILLS, DRILLS
TAPS & REAMERS

ABRASIVES
MEASURING TOOLS

MRO & SAFETY
FLAT STOCK/DRILL ROD

ROTARY HYDRAULIC CYLINDERS Super High Speed Through Hole

Strong large thru-hole, high speed rotary hydraulic cylinders are for use with all thru-hole power chucks with speeds up to 7000RPM. All cylinders come with hydraulic pressure lock system and a built-in check valve.



Strong

MODEL	Piston Dia	Piston Area		Piston Stroke	Draw Bar Pull Force		Max Op. Pressure	Max Speed	Moment Inertia	Weight	Total Leakage	Part Number	Price
		Push Side	Pull side		Push Side	Pull Side							
M1036	105	71	68.5	15	24.8(2529)	24(2447)	40.8	8000	0.011	8.6	3.0	UT-M1036	\$2,322.00
M1236	125	100	89	15	38(3875)	33(3365)	40.8	7000	0.019	13.0	3.0	UT-M1236	\$2,581.00
M1246	125	100	89	15	38(3875)	33(3365)	40.8	7000	0.019	12.0	3.0	UT-M1246	\$2,592.00
M1546	155	161	150	22	60(6118)	56(5710)	40.8	6200	0.052	18.0	3.9	UT-M1546	\$2,862.00
M1552	155	161	150	22	60(6118)	56(5710)	40.8	6200	0.052	16.8	3.9	UT-M1552	\$2,952.00
M1868	180	198	183	25	75(7546)	69(7036)	40.8	4700	0.095	28.0	4.2	UT-M1868	\$3,402.00
M1875	180	198	183	25	75(7546)	69(7036)	40.8	4700	0.095	26.0	4.2	UT-M1875	\$3,492.00
M2091	205	252	234	30	94(9585)	94(9585)	40.8	3800	0.15	37.0	4.5	UT-M2091	\$4,392.00
M2511	250	348	336	23	124(12644)	120(12236)	40.8	2800	0.45	57.0	7.0	UT-M2511	\$5,292.00

Call Us Today For All Of Your Machine Tool Needs!