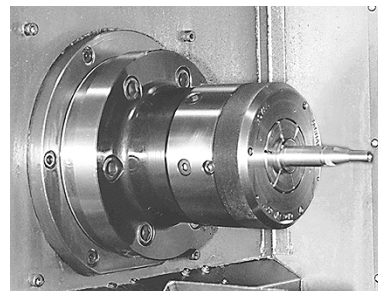


COLLET CHUCKS

Why Buy A Collet Chuck?

Collet chucks can be easily installed on almost any CNC lathe, whether it is new or old. They can be interchanged with 3 jaw chucks or installed permanently, depending on the jobs required. Here are some other advantages of a collet chuck:

- Gripping force is spread over the entire circumference of the workpiece instead of being concentrated at just three points.
- Jobs can be run at higher RPMs because collet chucks are not as vulnerable to the negative effects of centrifugal force.
- Collet chucks offer better tool clearance and easier access to workpiece.
- Collet changeover time is usually faster than changing chuck jaws.
- No boring of jaws is required.
- Collet chucks usually have much less mass than 3 jaw chucks, reducing wear on machine tool spindle bearings and allowing for quicker starts and stops.
- Collets are readily available.



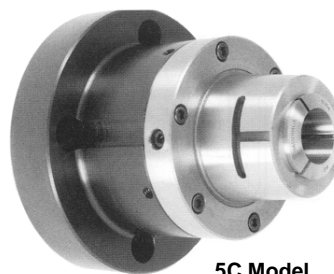
Collet Chuck Applications:

Bar feeding/Bar pulling • Slug work • Small diameter work less than 3" • Twin or subspindle machines • Delicate thin-walled parts • High RPM applications • Parts that require extra tool clearance for machining

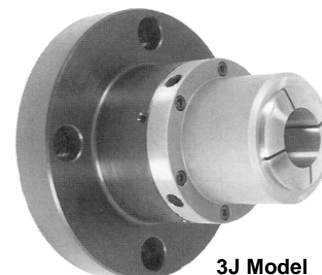
COLLET CHUCKS

For CNC Lathes

These productivity enhancing systems have a built-in concentricity adjustment (under 0.00050" TIR) and can be mounted on all American standard spindles in less than 20 minutes. Only one complete chuck assembly is required because each spindle adapter of the assembly will accept any of Dunham's 5C, 16C, 3J, 2J and 22J collet adapters. Changeover is accomplished quickly and easily by the removal and replacement of only six bolts on the collet adapter.



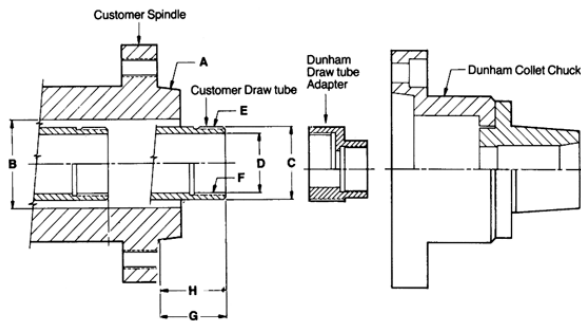
5C Model



3J Model

FEATURES:

- Adapts CNC lathes for standard 5C, 16C, 3J, 2J and 22J collets.
- Built in concentricity adjustment.
- Workholders are actuated by machine closer.
- Light weight permits higher turning speeds.
- Balanced design for smooth running.
- Easy installation! Mounts in less than 20 minutes!
- Also available in 5C, 16C & 3J configurations for Rotary Tables, Grinding Machines & Camlock/140mm lathes.



When placing an order, please provide us with the following information:

- Machine make and model number.
- A. Spindle Size
- B. spindle I.D.
- C. O.D. Draw Tube
- D. I.D. Draw Tube
- E. Draw tube external thread size
- F. Draw tube internal thread size
- G. Draw tube fully extended
- H. Draw tube fully retracted

Collet Type	Spindle	Cap.	Threaded Nose	Part Number	Price Each
5C	A4	1 1/16	N	DTC-5C-4T-A4	\$589.00
	A5	1 1/16	N	DTC-5C-4T-A5	\$602.00
	A6	1 1/16	N	DTC-5C-4T-A6	\$633.00
	A8	1 1/16	N	DTC-5C-4T-A8	\$752.00
5C	A4	1 1/16	Y	DTC-5CTHD-A4	\$633.00
	A5	1 1/16	Y	DTC-5CTHD-A5	\$644.00
	A6	1 1/16	Y	DTC-5CTHD-A6	\$680.00
	A8	1 1/16	Y	DTC-5CTHD-A8	\$781.00
16C	A4	1 5/8	N/A	DTC-16C-A4	\$734.00
	A5	1 5/8	N/A	DTC-16C-A5	\$776.00
	A6	1 5/8	N/A	DTC-16C-A6	\$804.00
	A8	1 5/8	N/A	DTC-16C-A8	\$817.00
3J	A4	1 3/4	N/A	DTC-3J-A4	\$734.00
	A5	1 3/4	N/A	DTC-3J-A5	\$776.00
	A6	1 3/4	N/A	DTC-3J-A6	\$804.00
	A8	1 3/4	N/A	DTC-3J-A8	\$817.00

Please add \$179.00 for threaded drawtube adapter.

AIR COLLET CHUCKS

FEATURES:

- Uses only one air line through the spindle to the chuck.
- Standard shop air operates the chuck.
- Simple face plate mounting-special spindle mounts available.
- Built-in concentricity flange permits adjusting concentricity to new standards of collet accuracy.
- Lightweight-approx. 9lbs.



Please Call For More Information!



Available for 5C, 2J, 16C and 3J collets, air collet chucks can be used in both rotary and stationary applications, and will mount to any American Standard or Camlock style spindles with the use of a spindle mounting adapter.

Air Collet Chucks, with a precision collet closer and collet actuator, are commonly used as a lathe chuck, as well as with cylindrical or surface grinders, rotary tables, machining centers and other equipment. This air chuck is designed for absolute concentricity adjustability. They are designed for secondary chucking, not for through work, and accept all 5C, 2J, 16C and 3J collets and expanding internal collets for I.D holding from 1/4" to 6" diameters.

Adjustable concentricity screws permit adjusting to 0.0005" TIR. Internal stops eliminate length changes due to drawback. Foot or hand valves free hands for efficient part handling. A special air union permits spindle speeds to 3,500 rpm. Collet sticking is eliminated by a spring-loaded piston. Shop air pressure activates a large piston, closing the collet. The piston is spring-loaded and returns when air pressure is exhausted.



Call Us Today For All Of Your Machine Tool Needs!

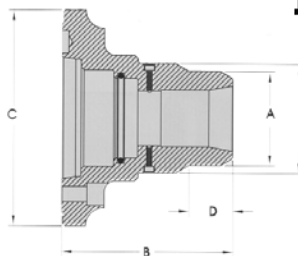
COLLET CHUCKS

CNC PULLBACK COLLET CHUCKS

For 5C, 16C & 3J Collets

FEATURES:

- A simple, low-cost method for utilizing collets on all CNC lathes and turning centers.
- Pullback design.
- 0.0003" TIR guaranteed.
- Body hardened to Rc61-63 for rigidity
- Accepts 5C, 16C & 3J collets and tooling.



LATHE CHUCKS
LIVE CENTERS

VICE ACCESSORIES

STRAIGHT SHANK
COLLET HOLDERS

LATHE BUSHINGS
DRILL CHUCKS

CARBIDE INSERTS
THREADING/GROOVING

CUTTING TOOLS
MACHINERY

PRECISION TOOLS
DEBURRING

COOLANT/FLUIDS
TOOL STORAGE

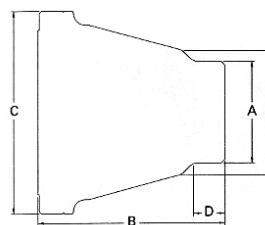
Collet Type	Spindle	Cap.	Threaded Nose	A	B	C	D	E	Max Drawbar Force (lbs.)	Max Clamping Force (lbs.)	Max RPM	Part Number	Price
5C	A2-5	1-1/16	N	2.63	5.00	6.45	1.05	3.14	4,490	15,750	6,000	ROY-42053	\$783.75
	A2-5	1-1/16	Y	2.187-10	5.00	6.45	1.22	3.14	4,490	15,750	6,000	ROY-42054	\$874.00
5C	A2-6	1-1/16	N	2.63	5.00	7.45	1.05	3.14	4,490	15,750	6,000	ROY-42055	\$943.00
	A2-6	1-1/16	Y	2.63	6.00	7.45	1.05	3.14	4,490	15,750	6,000	ROY-42057	\$1,026.00
5C	A2-6	1-1/16	N	2.63	6.00	7.45	1.22	3.14	4,490	15,750	6,000	ROY-42058	\$1,116.25
	A2-6	1-1/16	Y	2.187-10	6.00	7.45	1.22	3.14	4,490	15,750	6,000	ROY-42059	\$1,083.00
5C	A2-8	1-1/16	N	2.63	6.00	9.45	1.05	3.14	4,490	15,750	4,500	ROY-42059	\$1,083.00
	A2-8	1-1/16	Y	2.187-10	6.00	9.45	1.22	3.14	4,490	15,750	4,500	ROY-42060	\$1,163.75
16C	A2-5	1-5/8	N	3.00	6.00	6.45	1.85	3.31	5,390	19,800	6,000	ROY-42067	\$973.75
	A2-6	1-5/8	N	3.25	6.00	7.45	1.54	3.78	5,390	19,800	6,000	ROY-42069	\$1,026.00
	A2-8	1-5/8	N	3.25	6.00	9.45	1.54	3.78	5,390	19,800	4,500	ROY-42071	\$1,135.25
3J	A2-5	1-3/4	N	3.08	6.00	6.45	1.16	3.33	5,390	19,800	6,000	ROY-42061	\$1,002.25
	A2-6	1-3/4	N	3.25	6.00	7.45	1.05	3.87	5,390	19,800	6,000	ROY-42063	\$1,083.00

CNC ACCU-LENGTH COLLET CHUCKS

For 5C, 16C & 3J Collets

FEATURES:

- Exclusive Accu-Length™ system eliminates part pullback.
- Guaranteed max. closing sleeve runout relative to mounting recess is 0.00025".
- Patented floating collet retainer improves concentricity.
- Accepts all standard 5C and 16C accessories & tooling.
- Ideal for sub-spindle applications.
- Collet wrench and oiler included with chuck.



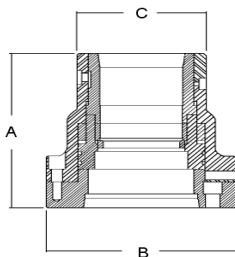
Collet Type	Spindle Type	Cap.	A	B	C	D	E	Max Drawbar Force (lbs)	Max Clamping Force (lbs)	Max RPM	Part Number	Price
5C	A2-5	1-1/16"	2.43	5.75	6.45	1.00	4.00	4,000	13,600	6,000	ROY-42330	\$2,732.20
	A2-6	1-1/16"	2.43	5.75	7.45	1.00	4.00	4,000	13,600	6,000	ROY-42332	\$2,838.60
16C	A2-5	1-5/8"	3.25	6.25	6.45	1.03	3.90	5,400	18,300	6,000	ROY-42338	\$2,985.85
	A2-6	1-5/8"	3.25	7.00	7.95	1.03	4.48	5,400	18,300	6,000	ROY-42340	\$3,080.85
	A2-8	1-5/8"	3.25	7.75	9.45	1.03	4.48	5,400	18,300	4,500	ROY-42342	\$3,184.40
3J	A2-5	1-3/4"	3.25	6.00	6.45	1.03	3.97	5,400	26,300	6,000	ROY-42344	\$3,080.85
	A2-6	1-3/4"	3.25	6.50	7.95	1.03	4.48	5,400	26,300	6,000	ROY-42346	\$3,184.40
	A2-8	1-3/4"	3.25	7.25	9.45	1.03	4.48	5,400	26,300	4,500	ROY-42348	\$3,293.65

LOW PROFILE TRUE LENGTH COLLET CHUCKS

For 5C, 16C, 2J, 3J & 22J Collets

FEATURES:

- Adjustable feature for T.I.R. and concentricity.
- Fixed collet position increases linear precision.
- Ideal for secondary operations, sub-spindle applications and part transfers.
- Small body design provides for greater tool clearance, Z-axis travel and rigidity.



Description	Spindle	O.A.L.			Cap.	Part Number	Price
		A	B	C			
5C (Utilizes standard 5C collets)							
750AG05-50 A5-5CTL	A2-5	5.740	6.450	2.500	1.062	ATS-750AG0550	\$2,802.50
750AG5-60 A6-5CTL	A2-6	5.750	7.450	2.500	1.062	ATS-750AG560	\$2,907.00
750AG05-80 A8-5CTL	A2-8	7.000	8.450	2.500	1.062	ATS-750AG0580	\$3,170.00
750AG05-140 140MM5CTL	140MM	5.600	6.450	2.500	1.062	ATS-750AG05140	\$2,907.00
16C (Utilizes standard 16C collets)							
716AK40-60 A6-16CTL	A6	7.000	7.000	3.250	1.625	ATS-716AK4060	\$3,163.50
716AK40-80 A8-16CTL	A8	7.750	8.450	3.250	1.625	ATS-716AK4080	\$3,268.00
716AK40-140 140MM16CTL	140MM	7.000	7.000	3.250	1.625	ATS-716AK40140	\$3,163.50
3J (Utilizes standard 3J collets)							
730AH05-60 A6-3JTL	A2-6	6.500	7.000	3.250	1.750	ATS-730AH0560	\$3,268.00
730AH05-80 A8-3JTL	A2-8	7.250	8.450	3.250	1.750	ATS-730AH0580	\$3,372.50
730AH05-140 140MM3JTL	140MM	6.500	7.000	3.250	1.750	ATS-730AH05140	\$3,268.00

Call Us Or Visit Our Website For Our Complete Selection!

2010-11 Master Catalog

ROYAL PRODUCTS QUICK-GRIP™ COLLET CHUCKS

10-SECOND COLLET CHANGES!

NEW
ITEM!



**Exclusive "Bolt & Go" Mounting Advantage
On All Royal Collet Chucks!**

Many Royal chuck models mount directly to the lathe spindle without the need for an adapter plate. However, for models that do use a plate, a precision-ground tapered fit between the plate's male pilot and chuck body's female recess ensures a consistent, near-perfect fit without the need for any adjustment. Knock 30 minutes off your setup time with Royal bolt & Go™!

MACHINE VISES
MAGNETIC CHUCKS

- **10-Second Collet Changes!** A unique hook and groove design for securing collets is used instead of traditional threads
- **Widest Collet Gripping Range!** Royal Quick-Grip™ collets have a .062" gripping range (+/-0.031"), allowing them to accommodate undersized and oversized bar stock
- **Ultra-Compact Design-**Quick-grip™ CNC collet chucks have smaller nose diameters than other quick-change collet chucks for superior tool clearance
- Royal Quick-Grip™ collet chucks are balanced by design for high-speed operation, and can often be run at higher speeds than conventional 3-jaw chucks because they are less affected by centrifugal force
- **Extremely Accurate-**Runout on the closing angle is guaranteed to be within 0.0002" TIR
- Quick-Grip™ collet chucks can also utilize microCentric™ and Hainbuch™ quick-change collets
- Available in Accu-Length or Pullback styles
- **Made in the USA**

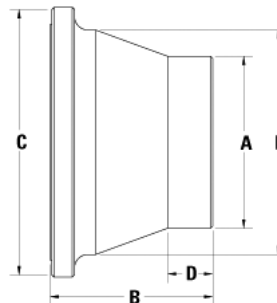
RETENTION KNOBS
ER, DA, TG COLLETS

QUICK-GRIP™ ACCU-LENGTH™ CNC COLLET CHUCKS

Royal Accu-Length™ CNC collet chucks incorporate dead-length operation to eliminate part pullback. With this design, a tapered sleeve pushes forward over the collet to compress it, resulting in precise z-axis positioning.



NEW
ITEM!



ROYAL
PRODUCTS

TOOLHOLDERS
TAP HOLDERS

INDEXABLE DRILLS
TURNING & BORING

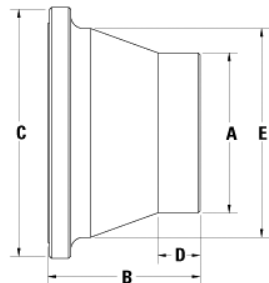
Spindle Type	Collet Series	Cap.	A	B	C	D	E	Chuck Weight	Max. Drawbar Force	Max Clamping Force	Max RPM	Part Number	Price
A2-5	QG-42	1-5/8	4.75	4.60	5.70	1.00	5.70	21	7,865	14,160	6,000	ROY-44050	\$2,385.00
A2-6	QG-42	1-5/8	4.75	4.50	7.45	1.25	6.20	23	7,865	14,160	6,000	ROY-44052	\$2,385.00
A2-5	QG-65	2-5/8	5.50	4.80	6.45	1.40	6.45	27	10,115	18,205	6,000	ROY-44060	\$2,691.00
A2-6	QG-65	2-5/8	5.50	5.33	7.45	1.40	6.45	33	10,115	18,205	6,000	ROY-44062	\$2,691.00
A2-8	QG-65	2-5/8	5.50	5.50	9.45	1.25	6.35	44	10,115	18,205	6,000	ROY-44064	\$3,051.00

QUICK-GRIP™ PULLBACK CNC COLLET CHUCKS

Royal Pullback CNC collet chucks provide a simple, low-cost method for utilizing Quick-Grip™ collets on all CNC lathes and turning centers



NEW
ITEM!



ROYAL
PRODUCTS

ENDMILLS, DRILLS
TAPS & REAMERS

ABRASIVES
MEASURING TOOLS

Spindle Type	Collet Series	Cap.	A	B	C	D	E	Chuck Weight	Max. Drawbar Force	Max Clamping Force	Max RPM	Part Number	Price
A2-5	QG-42	1-5/8	4.11	4.45	6.45	3.50	5.25	11	7,865	14,160	6,000	ROY-44020	\$1,458.00
A2-6	QG-42	1-5/8	4.11	4.35	7.45	1.50	4.38	13	7,865	14,160	6,000	ROY-44022	\$1,575.00
A2-5	QG-65	2-5/8	4.88	4.30	6.45	1.50	6.45	19	10,115	18,205	6,000	ROY-44028	\$1,665.00
A2-6	QG-65	2-5/8	4.88	4.85	7.45	1.50	5.25	17	10,115	18,205	6,000	ROY-44030	\$1,665.00
A2-8	QG-65	2-5/8	4.88	5.00	9.45	1.50	5.72	26	10,115	18,205	6,000	ROY-44032	\$2,061.00

Please See Following Page For Quick-Grip™ Collets And Accessories

Call Us Today For All Of Your Machine Tool Needs!

2010-11 Master Catalog

MRO & SAFETY
FLAT STOCK/DRILL ROD

QUICK-GRIP™ COLLETS

B

LATHE CHUCKS
LIVE CENTERS

QUICK-GRIP™ COLLETS

- For use with Royal Quick-Grip™ Collet Chucks
- Precision ground to nominal size, with a gripping range of +/- .031". For example, a 1/2" collet can hold any part ranging in size from 0.531" diameter down to 0.469" diameter
- Extremely accurate-total system accuracy (chuck and collet) of 0.0004" TIR or better
- Available with smooth or serrated ID. Hex, square and custom sizes also available, please call
- Vulcanized rubber between collet segments provide excellent sealing protection against coolant penetration



Royal Quick-Grip™ Collets
Are Fully Compatible With
MicroCentric™ & Hainbuch™
Quick-Change Collets!

QG-42 Collets \$215.00 Each

Diameter	Smooth Bore	Serrated Bore
3/16	ROY-44101	-
7/32	ROY-44102	-
1/4	ROY-44103	-
9/32	ROY-44104	-
5/16	ROY-44105	-
11/32	ROY-44106	ROY-44155
3/8	ROY-44107	ROY-44156
13/32	ROY-44108	ROY-44157
7/16	ROY-44109	ROY-44158
15/32	ROY-44110	ROY-44159
1/2	ROY-44111	ROY-44160
17/32	ROY-44112	ROY-44161
9/16	ROY-44113	ROY-44162
19/32	ROY-44114	ROY-44163
5/8	ROY-44115	ROY-44164
21/32	ROY-44116	ROY-44165

Diameter	Smooth Bore	Serrated Bore
11/16	ROY-44117	ROY-44166
23/32	ROY-44118	ROY-44167
3/4	ROY-44119	ROY-44168
25/32	ROY-44120	ROY-44169
13/16	ROY-44121	ROY-44170
27/32	ROY-44122	ROY-44171
7/8	ROY-44123	ROY-44172
29/32	ROY-44124	ROY-44173
15/16	ROY-44125	ROY-44174
31/32	ROY-44126	ROY-44175
1	ROY-44127	ROY-44176
1-1/32	ROY-44128	-
1-1/16	ROY-44129	ROY-44177
1-3/32	ROY-44130	-
1-1/8	ROY-44131	ROY-44178
1-5/32	ROY-44132	-

Diameter	Smooth Bore	Serrated Bore
1-3/16	ROY-44133	ROY-44179
1-7/32	ROY-44134	-
1-1/4	ROY-44135	ROY-44180
1-9/32	ROY-44136	-
1-5/16	ROY-44137	ROY-44181
1-11/32	ROY-44138	-
1-3/8	ROY-44139	ROY-44182
1-13/32	ROY-44140	-
1-7/16	ROY-44141	ROY-44183
1-15/32	ROY-44142	-
1-1/2	ROY-44143	ROY-44184
1-17/32	ROY-44144	-
1-9/16	ROY-44145	ROY-44185
1-19/32	ROY-44146	-
1-5/8	ROY-44147	ROY-44186

QG-65 Collets \$265.00 Each

Diameter	Smooth Bore	Serrated Bore
3/16	ROY-44201	-
7/32	ROY-44202	-
1/4	ROY-44203	-
9/32	ROY-44204	-
5/16	ROY-44205	-
11/32	ROY-44206	ROY-44306
3/8	ROY-44207	ROY-44307
13/32	ROY-44208	ROY-44308
7/16	ROY-44209	ROY-44309
15/32	ROY-44210	ROY-44310
1/2	ROY-44211	ROY-44311
17/32	ROY-44212	ROY-44312
9/16	ROY-44213	ROY-44313
19/32	ROY-44214	ROY-44314
5/8	ROY-44215	ROY-44315
21/32	ROY-44216	ROY-44316
11/16	ROY-44217	ROY-44317
23/32	ROY-44218	ROY-44318
3/4	ROY-44219	ROY-44319
25/32	ROY-44220	ROY-44320
13/16	ROY-44221	ROY-44321
27/32	ROY-44222	ROY-44322
7/8	ROY-44223	ROY-44323
29/32	ROY-44224	ROY-44324
15/16	ROY-44225	ROY-44325
31/32	ROY-44226	ROY-44326
1	ROY-44227	ROY-44327

Diameter	Smooth Bore	Serrated Bore
1-1/32	ROY-44228	-
1-1/16	ROY-44229	ROY-44328
1-3/32	ROY-44230	-
1-1/8	ROY-44231	ROY-44329
1-5/32	ROY-44232	-
1-3/16	ROY-44233	ROY-44330
1-7/32	ROY-44234	-
1-1/4	ROY-44235	ROY-44331
1-9/32	ROY-44236	-
1-5/16	ROY-44237	ROY-44332
1-11/32	ROY-44238	-
1-3/8	ROY-44239	ROY-44333
1-13/32	ROY-44240	-
1-7/16	ROY-44241	ROY-44334
1-15/32	ROY-44242	-
1-1/2	ROY-44243	ROY-44335
1-17/32	ROY-44244	-
1-9/16	ROY-44245	ROY-44336
1-19/32	ROY-44246	-
1-5/8	ROY-44247	ROY-44337
1-21/32	ROY-44248	-
1-11/16	ROY-44249	ROY-44338
1-23/32	ROY-44250	-
1-3/4	ROY-44251	ROY-44339
1-25/32	ROY-44252	-
1-13/16	ROY-44253	ROY-44340
1-27/32	ROY-44254	-

Diameter	Smooth Bore	Serrated Bore
1-7/8	ROY-44255	ROY-44341
1-29/32	ROY-44256	-
1-15/16	ROY-44257	ROY-44342
1-31/32	ROY-44279	-
2	ROY-44258	ROY-44343
2-1/32	ROY-44259	-
2-1/16	ROY-44260	ROY-44344
2-3/32	ROY-44261	-
2-1/8	ROY-44262	ROY-44345
2-5/32	ROY-44263	-
2-3/16	ROY-44264	ROY-44346
2-7/32	ROY-44265	-
2-1/4	ROY-44266	ROY-44347
2-9/32	ROY-44267	-
2-5/16	ROY-44268	ROY-44348
2-11/32	ROY-44269	-
2-3/8	ROY-44270	ROY-44349
2-13/32	ROY-44271	-
2-7/16	ROY-44272	ROY-44350
2-15/32	ROY-44273	-
2-1/2	ROY-44274	ROY-44351
2-17/32	ROY-44275	-
2-9/16	ROY-44276	ROY-44352
2-19/32	ROY-44277	-
2-5/8	ROY-44278	-

COLLET INSTALLATION TOOL

- Easy to use tool enables collets to be changed in seconds
- Simply insert the steel pins into the collet face holes and squeeze main trigger to collapse collet
- Once collet is positioned within the chuck, squeeze the trigger lock to expand and release
- Heavy -duty construction for durability

Collet Series	Part Number	Price
QG-42	ROY-44097	\$495.00
QG-65	ROY-44098	\$495.00



WISE JAWS
WISE ACCESSORIES

STRAIGHT SHANK
COLLET HOLDERS

LATHE BUSHINGS
DRILL CHUCKS

CARBIDE INSERTS
THREADING/GROOVING

CUTTING TOOLS
MACHINERY

PRECISION TOOLS
DEBURRING

COOLANT/FLUIDS
TOOL STORAGE

Call Us Or Visit Our Website For Our Complete Selection!

2010-11 Master Catalog

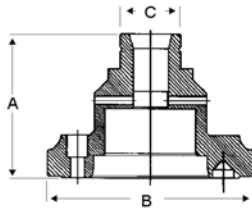
COLLET CHUCKS

CNC PULLBACK COLLET CHUCKS

For 16C & 5C Collets

FEATURES:

- 5C collets readily available.
- 16C collet chucks are popular due to their capacity (1.625").
- 5C and 16C systems available with step chuck capability.
- Step chuck capacities range from 2" to 6" in diameter.



WARNING: Do not use manual jaw chucks, fixture mounting plates or face plates on ATS 5C threaded nose. Cast iron step chuck closers are not recommended for speeds greater than 4000 RPM or draw bar forces over 5,000lbs.



B

Description	Spindle	O.A.L.		Flange		Nose		Cap.	Part Number	Price
		A	B	B	C					

16C (Utilizes standard 16C collets)

A5-16C	A2-5	6.250	6.450	3.400	1.625	ATS-1650-B05	\$1,002.25
A5-16C S/C	A2-5	6.250	6.450	5.450	1.625	ATS-1650S-D10	\$1,724.25
A6-16C	A2-6	6.250	7.450	4.000	1.625	ATS-1660A-D01	\$1,087.75
A6-16C S/C	A2-6	6.250	7.450	5.450	1.625	ATS-1660S-D11	\$2,142.25
A8-16C	A2-8	6.500	9.450	5.375	1.625	ATS-1680A-A17	\$1,168.50
A8-16C S/C	A2-8	6.500	8.450	5.450	1.625	ATS-1680-C265	\$2,351.25

5C (Utilizes standard 5C collets)

A3-5C	A2-3	2.900	4.450	2.180	1.062	ATS-5030-2	\$921.50
A4-5CA	A2-4	3.500	5.450	2.180	1.062	ATS-5040-A01	\$921.50
A4-5CB	A2-4	5.000	5.450	2.180	1.062	ATS-5040-A02	\$983.25
A5-5CA1	A2-5	3.500 (1)	6.450	2.000	1.062	ATS-5050-A04	\$783.75
A5-5CB	A2-5	5.000	6.450	2.180	1.062	ATS-5050-B01	\$897.75
A5-5CB1	A2-5	5.000 (1)	6.450	2.180	1.062	ATS-5050-B02	\$807.50
A5-5CA	A2-5	3.500	6.450	2.180	1.062	ATS-5050-B03	\$864.50
A6-5C1	A2-6	5.000 (1)	7.450	2.250	1.062	ATS-5060A-A05	\$950.00
A6-5CA	A2-6	5.000	7.450	2.180	1.062	ATS-5060A-C01	\$1,035.50
A6-5CB	A2-6	6.000	7.450	2.180	1.062	ATS-5060A-C03	\$1,149.50
AB-5C1	A2-8	6.000 (1)	9.450	2.250	1.062	ATS-5080A-A14	\$1,116.25
AB-5C	A2-8	6.000	9.450	2.180	1.062	ATS-5080A-A13	\$1,201.75
140MM-5C1	140 MM	5.500 (1)	7.450	2.200	1.062	ATS-50140-A155	\$1,064.00

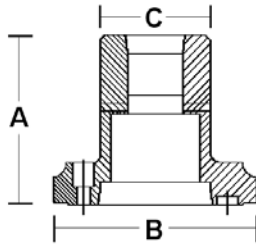
(1) - Non Threaded Nose S/C - Step Chuck Capability

CNC PULLBACK COLLET CHUCKS

For "J" Style Collets

FEATURES:

- Uses precision collets for greater T.I.R.
- Short collet design reduces collet chuck's overall length.
- Uses affordable industry standard collets.
- "J" style's 7° closing taper allows for greater gripping power.



Full Line Available!
Please call for more information.



B

Description	Spindle	O.A.L.		Flange		Nose		Cap.	Part Number	Price
		A	B	B	C					

2J (Utilizes standard 2J collets)

A5-2J	A2-5	5.000	6.450	3.400	1.375	ATS-2050-D08	\$1,116.25
A6-2J	A2-6	5.500	7.450	4.000	1.375	ATS-2060A-B10	\$1,168.50
A8-2J	A2-8	5.750	9.450	5.000	1.375	ATS-2080-D17	\$1,282.50

3J (Utilizes standard 3J collets)

A5-3J	A2-5	5.750	6.450	3.400	1.750	ATS-3050-B07	\$1,035.50
A6-3J	A2-6	6.000	7.450	4.000	1.750	ATS-3060A-D03	\$1,116.25
A8-3J	A2-8	6.000	9.450	5.370	1.750	ATS-3080A-F17	\$1,315.75
140MM-3J	140 MM	6.000	6.450	3.750	1.750	ATS-30140-B175	\$1,116.25

22J (Utilizes standard 22J collets)

A5-22J	A2-5	6.000	6.450	4.000	2.250	ATS-2250-C11	\$1,733.75
A6-22J	A2-6	6.500	7.450	4.400	2.250	ATS-2260A-C10	\$1,847.75
A8-22J	A2-8	6.500	9.450	3.500	2.250	ATS-2280-B18	\$1,952.25

5C COLLET CHUCKS



FEATURES:

- For use with 5C collets
- Used for turning, facing, boring, grinding and milling on center lathes and grinding machines
- Key-operated scroll provides a uniform clamping of workpiece and low collet exchange time
- Includes chuck wrench

Chuck Size	Max RPM	Spindle	Part Number	Price
5"	6,000	Plain Back	A-3900-4714	\$299.00
		D1-4	A-3900-4715	\$379.00
		D1-6	A-3900-4716	\$379.00



5C LATHE CHUCKS

3 Jaw Self-Centering Scroll



FEATURES:

- 5C precision lathe chuck
- Works with any 5C tooling
- Eliminates tearing down a collet set up on a lathe
- Available in 4 different sizes

Chuck Size	Part Number	Price
3"	PH2-225-233	\$148.00
4"	PH2-225-234	\$155.00
5"	PH2-225-235	\$170.00
6"	PH2-225-236	\$228.00

Call Us Today For All Of Your Machine Tool Needs!

2010-11 Master Catalog

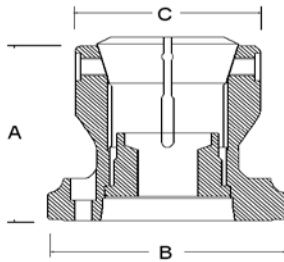
COLLET CHUCKS

CNC PULLBACK COLLET CHUCKS

For "S" Style Collets

FEATURES:

- "S" style is common in automatic screw and turret type machines.
- Utilizes standard "S" style collet pads-see page 82-83.
- Collet pads are readily available in many different hardened and ground sizes
- "F/N" Flat Nose chucks must be used with adapter plate



Full Line Available!
Please call for more information.



Description	Spindle	OAL	Flange	Nose	Cap.	Part Number	Price
		A	B	C			

S15 (H) (Utilizes standard S15 collet pads)

AS-S15H	A2-5	5.500	6.450	3.375	1.500	ATS-41550-C07	\$1,401.25
A6-S15H	A2-6	6.750	7.450	3.375	1.500	ATS-41560-D06	\$1,501.00

S20 (H) (Utilizes standard S20 collet pads)

A5-S20H	A2-5	5.625	6.450	4.500	2.000	ATS-42050-C05	\$2,351.25
A6-S20HS	A2-6	5.575	7.450	4.400	2.000	ATS-42060A-D05	\$2,508.00
A6-S20H	A2-6	6.750	7.450	4.400	2.000	ATS-42060A-D07	\$2,066.25
A8-S20H	A2-8	8.250	9.450	4.400	2.000	ATS-42080A-B13	\$2,185.00

S22 (H) (Utilizes standard S22 collet pads)

A6-S22H	A2-6	7.250	7.450	5.000	2.250	ATS-42260-E06	\$2,066.25
A8-S22H	A2-8	8.700	9.450	5.700	2.250	ATS-42280-B16	\$2,403.50

S26 (H) (Utilizes standard S26 collet pads)

A6-S26H	A2-6	5.750	7.450	5.750	2.625	ATS-42660B-E03	\$2,683.75
A8-S26HS	A2-8	5.750	9.450	5.750	2.625	ATS-42680B-C16	\$2,797.75
A8-S30H	A2-8	7.000	9.450	5.750	2.625	ATS-42680B-D16	\$2,403.50

S30 (H) (Utilizes standard S30 collet pads)

A6-S30H	A2-6	6.375	7.450	5.750	3.000	ATS-43060-E08	\$3,068.50
A8-S30HS	A2-8	6.525	9.450	5.750	3.000	ATS-43080A-E15	\$3,353.50
A8-S30H	A2-8	7.675	9.450	5.750	3.000	ATS-43080A-K05	\$2,902.25

S35 (H) (Utilizes standard S35 collet pads)

A8-S35HS	A2-8	6.750	9.450	7.000	3.500	ATS-43580-C300	\$4,075.50
----------	------	-------	-------	-------	-------	----------------	------------

S40 (H) (Utilizes standard S40 collet pads)

A11-S40H	A2-11	10.750	11.500	9.000	4.000	ATS-44011-K16	\$5,576.50
----------	-------	--------	--------	-------	-------	---------------	------------

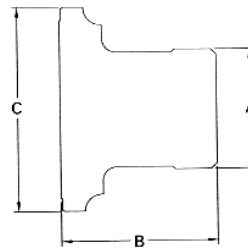
H - Hardening HS - Hardening (Short) B/B - Big Bore

CNC PULLBACK COLLET CHUCKS

For S-Style Collets

FEATURES:

- Simply change collet pads to hold different part diameters.
- Collet pads also available-see pages 82-83.
- S-Type collet chucks include master collet, wrench, mounting hardware and custom-machined drawtube adapter.



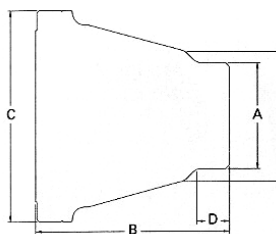
Collet Type	Spindle	Cap.	A	B	C	Chuck Weight (Lbs.)	Max Drawbar Force (Lbs.)	Max Gripping Force (Lbs.)	Max RPM	Part Number	Price
S-20 Master	A2-6	2"	4.40	5.57	7.45	17	6,000	14,700	6,000	ROY-45110	\$2,427.25
S-26 Master	A2-6	2-5/8"	5.75	6.25	7.45	21	6,500	15,925	6,000	ROY-45112	\$2,603.00
S-26 Master	A2-8	2-5/8"	5.75	6.25	9.45	42	6,500	15,925	4,500	ROY-45114	\$2,717.00
S-30 Master	A2-8	3"	5.75	6.53	9.45	53	7,000	17,150	4,500	ROY-45116	\$2,812.00

CNC ACCU-LENGTH COLLET CHUCKS

For "S" Style Collets

FEATURES:

- Exclusive Accu-Length™ system eliminates part pullback.
- Guaranteed max. closing sleeve runout relative to mounting recess is 0.00025".
- Patented floating collet retainer improves concentricity.
- Ideal for sub-spindle applications.
- Collet wrench and oiler included with chuck.
- Master collet included on S-Type collet chucks.



Collet Type	Spindle Type	Capacity	A	B	C	D	E	Max Drawbar Force (lbs)	Max Clamping Force (lbs)	Max RPM	Part Number	Price
S-20 Master	A2-5	2"	4.81	6.38	7.95	1.30	6.25	6,000	29,300	6,000	ROY-42360	\$3,433.30
	A2-6	2"	4.81	6.75	7.95	1.30	6.25	6,000	29,300	6,000	ROY-42362	\$3,680.30
S-26 Master	A2-6	2-5/8"	5.50	7.00	7.95	1.50	6.75	8,000	39,100	6,000	ROY-42364	\$3,779.10
	A2-8	2-5/8"	5.50	7.30	9.45	1.50	6.75	8,000	39,100	4,500	ROY-42366	\$3,887.40
S-30 Master	A2-6	3"	6.06	6.62	7.95	1.50	6.75	10,000	48,800	6,000	ROY-42368	\$4,112.55
	A2-8	3"	6.06	6.62	9.45	1.50	6.75	10,000	48,800	4,500	ROY-42370	\$4,112.55

Call Us Or Visit Our Website For Our Complete Selection!

2010-11 Master Catalog

77

LATHES CHUCKS
LIVE CENTERS

VICE ACCESSORIES
VICE JAWS

STRAIGHT SHANK
COLLET HOLDERS

LATHES BUSHINGS
DRILL CHUCKS

CARBIDE INSERTS
THREADING/GROOVING

CUTTING TOOLS
MACHINERY

PRECISION TOOLS
DEBURRING

COOLANT/FLUIDS
TOOL STORAGE

COLLET CHUCKS- "S" STYLE

CNC TRUE LENGTH COLLET CHUCKS

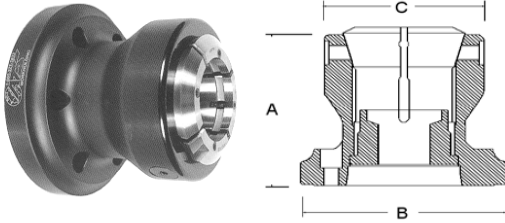
For "S" Style Collets

FEATURES:

- Fixed collet position ensures linear accuracy
- "S" style is common in automatic screw and turret type machines.
- Utilizes standard "S" style collet pads-see page 82.
- Reduced body diameter and elimination of the nose cap allows for greater tool clearance
- S35 and S40 collet chucks also available. Please call for more information



B

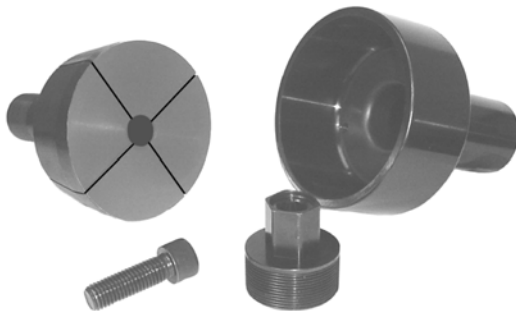


Description	Spindle	OAL	Flange	Nose	Cap.	Part Number	Price
		A	B	C			
S20 (Utilizes special S20 master collets- included in price)							
A5-S20TLS	A2-5	6.375	7.950	4.435	2.000	ATS-732ASJ5550	\$3,686.00
A6-S20TLS	A2-6	6.375	7.950	4.435	2.000	ATS-732ASJ5560	\$3,781.00
A8-S20TLS	A2-8	7.058	8.450	4.435	2.000	ATS-732ASJ5580	\$3,809.50
S26 (Utilizes special S26 master collets- included in price)							
A5-S26TLS	A2-5	7.000	7.375	5.500	2.625	ATS-726ASC31850	\$3,880.75
A6-S26TLS	A2-6	7.000	7.375	5.500	2.625	ATS-726ASC31860	\$3,880.75
A8-S26TLS	A2-8	7.170	8.450	5.500	2.625	ATS-726ASC31880	\$4,070.75
S30 (Utilizes special S30 master collets- included in price)							
A6-S30TLS	A2-5	6.625	8.450	6.097	3.000	ATS-782ASC32150	\$4,218.00
A6-S30TLS	A2-6	6.625	8.450	6.097	3.000	ATS-782ASC32160	\$4,218.00
A8-S30TLS	A2-8	6.705	9.450	6.097	3.000	ATS-782ASC32180	\$4,218.00
A11-S30TLS	A11	7.700	11.450	6.097	3.000	ATS-782ASC32111	\$4,431.75

HIGH SPEED COLLET CLOSER Patent Pending

For Use With 5C, 16C and 3J Collet Chucks With Collets Up To 5.25"

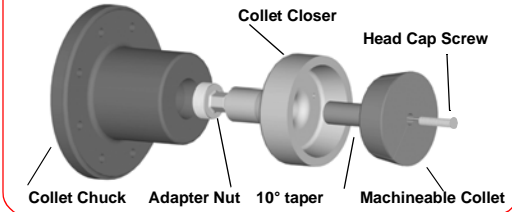
Hold Oversize Parts On The O.D.
On A Standard Draw Collet Chuck
Without Losing Speed!



FEATURES:

- Machine at higher speeds- just like a collet chuck!
- Available for True Length Collet Chucks
- Quick & Easy set-up! Takes less than 2 minutes!
- Take Heavier cuts!
- Made in the USA

Quick & Easy Set-Up!



The High Speed Collet Chuck Closer adapts to any standard pull back or true length collet chuck. Now there is no need to remove your collet chuck for larger parts to replace it with a jaw chuck and you no longer need to accept the slower speed imposed by a standard oversize collet without a closer. Now it is possible to machine at much higher speeds. The system is lightweight and easy to handle, which allows for a quick and safe assembly. The High Speed Collet Closer is designed for profitable production for both first or second operations at high speed and provides for a better finish for parts up to 5.25" diameter-larger than what a standard collet chuck can handle!

Collet Closer Assembly Kits

Comes complete with Collet Closer, Machinable Collet, Nut & Screw

B

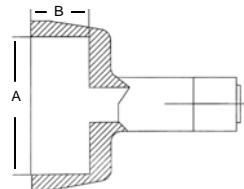
Dia	5C System	16C System	3J System	Draw Collet Chuck	True Length*
	Part Number	Part Number	Part Number	Assembly Price	Assembly Price
3"	CM-5C-3SL	CM-16C-3SL	CM-3J-3SL	\$390.00	\$415.00
4"	CM-5C-4SL	CM-16C-4SL	CM-3J-4SL	\$432.00	\$457.00
5"	CM-5C-5SL	CM-16C-5SL	CM-3J-5SL	\$464.00	\$489.00
6"	CM-5C-6SL	CM-16C-6SL	CM-3J-6SL	\$750.00	\$800.00

*For True Length Assembly, add "T" to end of part number. Ex: CM-3J-3SLT

MACHINABLE COLLETS

Dimensions (in inches)

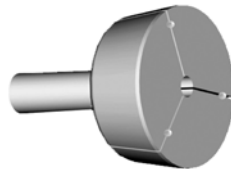
Dia	A	B
3	2.25	1.375
4	3.25	1.375
5	4.25	1.375
6	5.25	1.375



A x B is the machinable portion of the collet.

MACHINABLE COLLETS

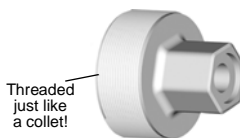
Sold separately, machinable collets have 3 or 4 splits. Pins included. Aluminum collets also available.



Dia	5C System	16C System	3J System	Price Each
	Part Number	Part Number	Part Number	
3"	CM-5C-3SOA	CM-16C-3SOA	CM-3J-3SOA	\$84.70
4"	CM-5C-4SOA	CM-16C-4SOA	CM-3J-4SOA	\$95.57
5"	CM-5C-5SOA	CM-16C-5SOA	CM-3J-5SOA	\$108.23
6"	CM-5C-6SOA	CM-16C-6SOA	CM-3J-6SOA	\$117.86

*For Aluminum, substitute "SOA" with "AOA" and add \$20 to price

ADDITIONAL REPLACEMENT PARTS



Size	Part Number	Price
5C	CM-5C-NUT	\$70.00
16C	CM-16C-NUT	\$70.00
3J	CM-3J-NUT	\$70.00



System	Part Number	Price
16C & 3J	1/2-20x 2 1/2	\$2.50
5C	3/8-24 x 2 1/4"	\$2.50

Call Us Today For All Of Your Machine Tool Needs!