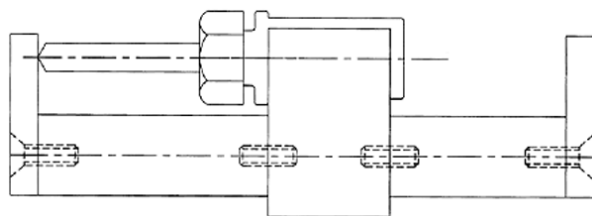
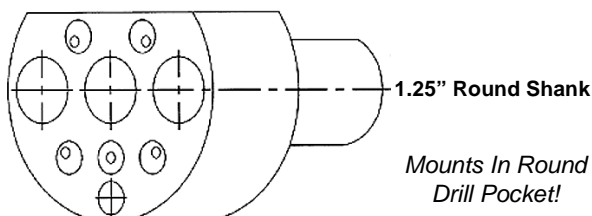
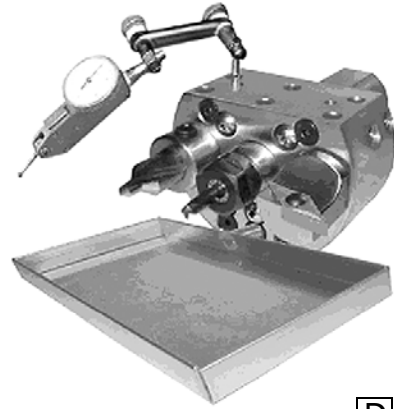


# GANG TOOLS FOR CNC LATHES

## TRIPLIT™- MULTIPLE TOOL HOLDING SYSTEM

*Reduce Set-Up Time!*

The new tool designed to reduce setup and cycle time by eliminating redundant tasks and operations. Triplit allows up to three tools to be mounted in a single turret station. Each tool pocket is ported for through the tool coolant delivery. There are also five additional external coolant balls provided. The additional tool capacity allows parts that previously required rechucking to be machined in one operation. Adjacent turret stations are freed up, further enhancing available tool configurations. A tool pre-setter is available making resetting of tool geometry's during setup unnecessary. A convenience tray snaps onto the front of the Triplit furnishing a small workbench right inside the lathe. Attachment holes are provided on four sides making Triplit an excellent indicator holder. Triplit holder is available separately or in kits. Accessories include indicator stem, convenience tray, turning, threading, and grooving tools, collet holders and reducer bushings for endmills and boring bars. 1.25" shank, three 3/4" tool pockets. Turning Tools are made so the cutting tip is in the same position, so the geometry you set will be correct for all the turning tools. Drilling tools are equally easy to set with the tool setter.



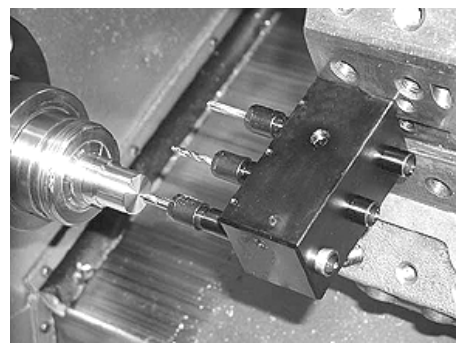
| Item                      | Kits Consist Of: |                 | Part Number     | Price Each | Compatible W/Turretgang? |
|---------------------------|------------------|-----------------|-----------------|------------|--------------------------|
|                           | DELUXE KIT       | BASIC KIT       |                 |            |                          |
| Triplit Tool Holder       | •                | •               | JOT-3301-AB     | \$285.00   | -                        |
| Adaptor Bushing 1/8       | •                |                 | TBG-07-0125     | \$37.95    | YES                      |
| Adaptor Bushing 3/16      | •                |                 | TBG-07-0187     | \$37.95    | YES                      |
| Adaptor Bushing 1/4       | •                | •               | TBG-07-0250     | \$37.95    | YES                      |
| Adaptor Bushing 5/16      | •                |                 | TBG-07-0312     | \$37.95    | YES                      |
| Adaptor Bushing 3/8       | •                |                 | TBG-07-0375     | \$37.95    | YES                      |
| Adaptor Bushing 1/2       | •                |                 | TBG-07-0500     | \$37.95    | YES                      |
| CNMG Turning Tool         | •                | •               | JOT-3301-CNMG   | \$72.50    | YES                      |
| VNMG Profiling Tool       | •                |                 | JOT-3301-VNMG   | \$72.50    | YES                      |
| NT3 Tool holder           | •                |                 | JOT-3301-NT3    | \$67.50    | YES                      |
| ER 11 Collet holder       | •                | •               | JOT-3301-ER11   | \$87.00    | YES                      |
| Tool Setter               | •                |                 | JOT-3301-FIXT   | \$175.00   | -                        |
| Indicator Stem            | •                | •               | JOT-3301-IND    | \$7.50     | -                        |
| Part Stop/ Plug           | •                |                 | JOT-3301-PLUG   | \$29.95    | -                        |
| <b>TRIPLIT Deluxe Kit</b> |                  |                 | JOT-TRIPLIT-DLX | \$850.00   |                          |
| <b>TRIPLIT Basic Kit</b>  |                  |                 | JOT-TRIPLIT-BSC | \$430.00   |                          |
| Priced Separately         | \$1,001.60       | \$481.95        |                 |            |                          |
| <b>TRIPLIT KIT PRICES</b> | <b>\$850.00</b>  | <b>\$430.00</b> |                 |            |                          |
| Saving Of Over:           | \$151.60         | \$51.95         |                 |            |                          |

## TURRETGANG™ FOR TURRET LATHES

For Gang Style Rapid Tool Change And Additional Tools For Turret Lathes

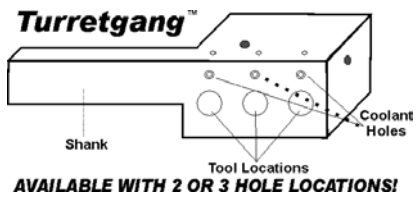


**FOR USE WITH:**  
Mazak, HAAS, Okuma-Howa, Cincinnati, Hardinge, Hwacheon, Mori Seiki, Nakamura, Daewoo Puma, Romi, Takisawa, Viper, Yang, YCI & many other machines!

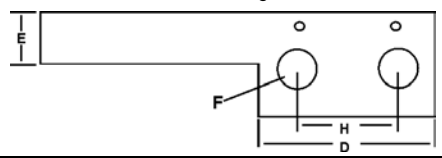


The Turretgang™ immediately reduces manufacturing cycle times by increasing the number of tools available on your lathe turret. The Turretgang™ speeds up machining due to the gang style spacing of the tools. X-axis programming allows the operator to take advantage of the cycle reduction benefits of slide type lathes. It is built to handle most round tooling requirements and features a coolant thru toolholder design. Available in several standard models for both channel and tool block style turrets, the Turretgang™ holds up to 3 tools and comes with a money back guarantee.

*Wherever You Can Mount An OD Toolholder, You Can Mount A Turretgang!*



- FEATURES:**
- More tools available in your turret
  - Immediately reduces manufacturing cycle time
  - Mounts in your OD tool holder location on turret
  - Right hand design
  - Reduces the need for second operations
  - Coolant Thru toolholder design



For Gang Tool Accessories, Please See Table At Top Of Page

| Turret Style | Shank Size E | Head Ext. D | No. Of Tool Loc. | Tool Loc. Size F | Location Spacing H | Part Number  | Price Each |
|--------------|--------------|-------------|------------------|------------------|--------------------|--------------|------------|
| Channel      | .750         | 3.50"       | 3                | .750             | 1.200"             | FA-1C35-3CGR | \$324.48   |
|              | 1.000        | 2.30"       | 2                |                  | 1.200"             | FA-1E23-2CGR | \$307.89   |
|              | 1.000        | 3.50"       | 3                |                  | 1.200"             | FA-1E35-3CGR | \$294.98   |

**Call Us Today For All Of Your Machine Tool Needs!**