

GANG TOOLING-For Hardinge Style Slide Lathes

D

LATHE CHUCKS
LIVE CENTERS

VICE JAWS
VICE ACCESSORIES

STRAIGHT SHANK
COLLET HOLDERS

LATHE BUSHINGS
DRILL CHUCKS

CARBIDE INSERTS
THREADING/GROOVING

CUTTING TOOLS
MACHINERY

PRECISION TOOLS
DEBURRING

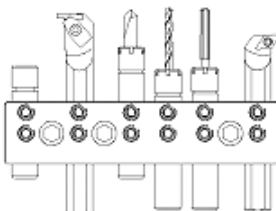
COOLANT/FLUIDS
TOOL STORAGE

MULTI-POSITION TOOL HOLDERS *Ideal For Parts Less Than 1" Diameter!*

Direct bolt on to 1/2" or 3/4" center height or adaptable to any height using riser adapters on page 102. A range of tools and holders that best suit the "Gang Tool" style of machining have been selected to provide the best use of space without compromising the rigidity or functionality of your machine tool. Each tool & tool holder integrates with a collet system, boring bar or square tool, to provide a rigid platform producing quality parts. The tool holders featured can be used alone or with a combination of other holders. Achieve Fast change-overs with multi position holders using the down-loadable tool offset capabilities of your control. Thicker tool holders provide long thread engagement on 3/4" bores.



Direct Bolt Onto:
Hardinge CHNC Style Turrets • Omni-Turn
CMS • Upgrade Technologies



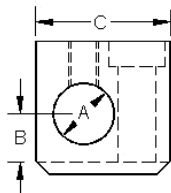
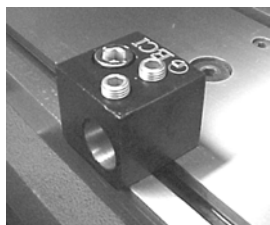
Add More Tools To Your Table!

FEATURES & BENEFITS:

- Fast change over
- Reduced set-up time
- Made of hardened steel
- Alloy bolts and chrome plated anchoring nuts for positive location of tools
- Can be used alone or in combination with other holders
- Custom spacing also available

*All machines referenced are trademarks of their respective manufacturers.

SINGLE POSITION HOLDERS

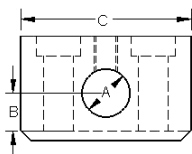
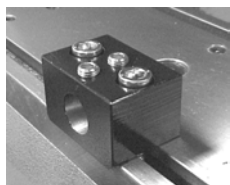


FEATURES:

- Ideal for mounting tools for odd sized work.
- These holders let you set the spacing on any sized work.
- Great for use with Posi-lock holders.
- Use a single position for bar stops.

Description	A	B	C	Part Number	Price
3/8" Center 5/8" Bore right hand	.6250	.3750	1.500	EC-TBS-1356	\$78.40
3/8" Center 5/8" Bore left hand	.6250	.3750	1.500	EC-TBS-1357	\$78.40
1/2" Center 5/8" Bore right hand	.6250	.5000	1.500	EC-TBS-1456	\$78.40
1/2" Center 5/8" Bore left hand	.6250	.5000	1.500	EC-TBS-1457	\$78.40
1/2" Center 3/4" Bore right hand	.7500	.5000	1.500	EC-TBS-1466	\$88.20
1/2" Center 3/4" Bore left hand	.7500	.5000	1.500	EC-TBS-1467	\$88.20
3/4" Center 3/4" Bore right hand	.7500	.7500	1.500	EC-TBS-1666	\$98.00

SINGLE POSITION HOLDERS-HEAVY DUTY

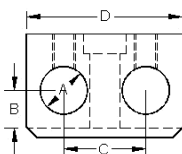


FEATURES:

- Designed for heavier cuts.
- Double hold down bolts provide extra clamping for heavy turning and boring.
- Great for tangential type turning.

Description	A	B	C	Part Number	Price
1/2" Center 5/8" Bore Heavy Duty	.6250	.500	2.220	EC-TBS-1450	\$93.10
1/2" Center 3/4" Bore Heavy Duty	.7500	.500	2.220	EC-TBS-1460	\$98.00
3/4" Center 3/4" Bore Heavy Duty	.7500	.750	2.200	EC-TBS-1660	\$117.60

2 POSITION HOLDERS

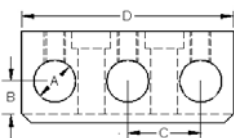


FEATURES:

- Ideal for holding 2 boring bars, or a center drill and drill in 1 holder.
- Easy change over for modular tooling.
- Use with a 6 or 8 position for non changing tools.

Description	A	B	C	D	Part Number	Price
3/8" Center 5/8" Bore	.6250	.3750	1.250	2.200	EC-TBS-2354	\$93.10
1/2" Center 5/8" Bore	.6250	.5000	1.250	2.200	EC-TBS-2454	\$93.10
1/2" Center 3/4" Bore	.7500	.5000	1.250	2.200	EC-TBS-2464	\$102.90
3/4" Center 3/4" Bore	.7500	.7500	1.250	2.200	EC-TBS-2664	\$122.50

3 POSITION HOLDERS

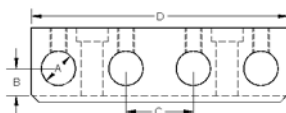


FEATURES:

- This tool is ideal for mounting groups of tools for drilling, turning or boring work.
- 3 spacing for optimum tool plate spacing.

Description	A	B	C	D	E	Part Number	Price
3/8" Center 5/8" Bore	.6250	.5000	1.250	3.500	1.250	EC-TBS-3354	\$102.90
1/2" Center 5/8" Bore	.6250	.5000	1.250	3.500	1.250	EC-TBS-3454	\$102.90
1/2" Center 3/4" Bore	.7500	.5000	1.250	3.500	1.250	EC-TBS-3464	\$112.70
3/4" Center 3/4" Bore	.7500	.7500	1.250	3.500	1.250	EC-TBS-3664	\$132.30

4 POSITION HOLDERS



FEATURES:

- A versatile mid size holder.
- Even spacing to accommodate any operations.
- Available in 5/8" or 3/4" bore.

Description	A	B	C	D	Part Number	Price
1/2" Center 5/8" Bore	.6250	.5000	1.250	4.750	EC-TBS-4454	\$151.90
1/2" Center 3/4" Bore	.7500	.5000	1.250	4.750	EC-TBS-4464	\$161.70

Call Us Or Visit Our Website For Our Complete Selection!

2010-11 Master Catalog

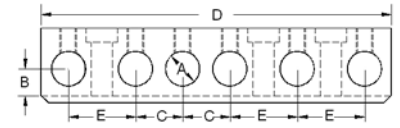
99

GANG TOOLING-For Hardinge Style Slide Lathes

6 POSITION HOLDERS



- FEATURES:**
- Perfect for a repeat production run on a wide range of work.
 - 6 tool positions allow for the exact spacing you need
 - Overall length of 6.5" allows flexibility on big setups.

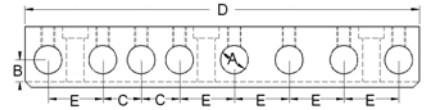


Description	A	B	C	D	E	Part Number	Price
3/8" Center 5/8" Bore	.6250	.3750	.8750	6.500	1.250	EC-TBS-6350	\$235.20
1/2" Center 5/8" Bore	.6250	.5000	.8750	6.500	1.250	EC-TBS-6450	\$235.20
1/2" Center 3/4" Bore	.7500	.5000	.8750	6.500	1.250	EC-TBS-6460	\$269.50
3/4" Center 3/4" Bore	.7500	.7500	.8750	6.500	1.250	EC-TBS-6660	\$289.10

8 POSITION HOLDERS

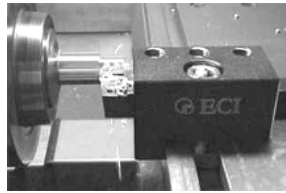
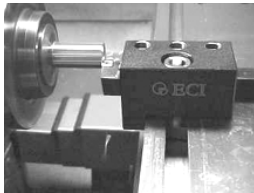


- FEATURES:**
- This holder is perfect for a repeat production run on a wide range of work.
 - 8 tool positions allow for the exact spacing you need.
 - Overall length of 9" allows flexibility on big setups.



Description	A	B	C	D	E	Part Number	Price
3/8" Center 5/8" Bore	.6250	.3750	.8750	9.000	1.250	EC-TBS-8350	\$313.60
1/2" Center 5/8" Bore	.6250	.5000	.8750	9.000	1.250	EC-TBS-8450	\$313.60
1/2" Center 3/4" Bore	.7500	.5000	.8750	9.000	1.250	EC-TBS-8460	\$367.50

TURNING/FACING HOLDERS



- FEATURES:**
- Turn and face with the same tool.
 - Accepts 0.500" or 0.750" shank square tools
 - Solid positive lock down directly to the table for deeper cuts.
 - Eliminates chatter and harmonics.
 - Recommended inserts: 80° diamond, triangle or trigon



Size	Type	Width	Part Number	Price
1/2" square	Right	1.250	EC-TBA-1446	\$78.40
1/2" square	Left	1.250	EC-TBA-1447	\$78.40
3/4" square	Right	1.500	EC-TBA-1666	\$88.20
3/4" square	Left	1.500	EC-TBA-1667	\$88.20

ADAPTER BUSHINGS



- FEATURES:**
- Large clearance holes for positive locking from screw to shaft.
 - .0002" concentricity.
 - Fits all tool station bolt patterns.

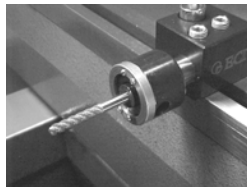
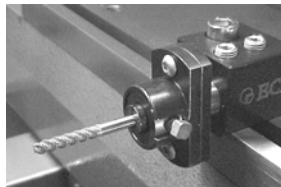
For Larger Bushings and Turret Lathe Bushings, Please See Pages 244-248



Size	Part Number	Price
3/4" to 5/8"	EC-ABR-3458	\$24.50
3/4" to 1/2"	EC-ABR-3412	\$24.50
5/8" to 1/2"	EC-ABR-5812	\$24.50
5/8" to 3/8"	EC-ABR-5838	\$24.50



TAP HOLDERS



Adjustable Center Tap Holder

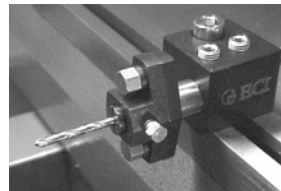
Fixed Center Tap Holder

- FEATURES:**
- Non-releasing type, uses standard 1/2" tap bushings.
 - 0.625 (5/8) shank diameter, for tap sizes 0-80 thru 1/2 -13.
 - Black oxide finish and ground shank.
 - Smooth slide floating inner sleeve
 - Spring load set for wide range of taps.
 - Adjustable head for exact centering on Adjustable Center Model.
 - Fixed Center Model provides a "floating" fixed center.



Description	Part Number	Price
Adjustable Center Tap Holder	EC-ATJ-2050	\$122.50
Fixed Center Tap Holder	EC-ATF-2050	\$122.50

DRILL HOLDERS-ADJUSTABLE CENTER

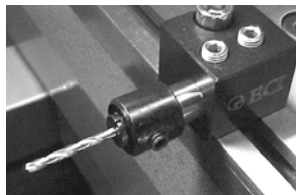


- FEATURES:**
- 5/8" shank diameter, accepts standard 1/2" bushings.
 - Secure, center locking bolts.
 - Thru hole in shank for deep drill insertion.
 - Head adjusts for exact centering.
 - Hardened alloy steel hardware.
 - Provides a rigid platform for positive drilling.
 - Can be used for small drill operations to achieve accurate centering.

Description	Part Number	Price
5/8" shank, 1/2" OD bushing size	EC-ADJ-2050	\$63.70



DRILL HOLDERS-FIXED CENTER



- FEATURES:**
- Allows leveling of Z offset on small drills.
 - Quick setting on fixed center.
 - Two sizes for wide range of drilled diameters.
 - Uses 1/2" standard bushes (ADF-2050)
 - Thru hole allows deeper insertion for long drills.
 - Large set screw for positive gripping. (No push-back).
 - Machined on common center 0.0002 max run out.

Description	Part Number	Price
5/8" shank, 1/2" OD bushing size	EC-ADF-2050	\$34.30



Call Us Today For All Of Your Machine Tool Needs!

2010-11 Master Catalog

GANG TOOLING-For Hardinge Style Slide Lathes

D

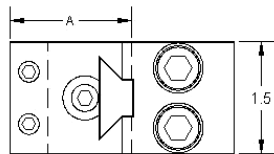
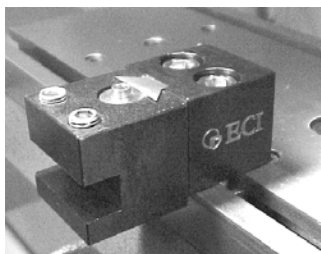
LATHES CHUCKS
LIVE CENTERS

POSI-LOCK DOVETAIL SYSTEM

This system allows you to mount universal posts and just change the heads! The dovetail plate is drawn back to the post with two cap head bolts from the rear, creating a solid, vibration free, heavy duty holder! To adjust center, simply loosen the rear bolts, insert a hex key in the jack screw, center the tool and lock it back in place. Patent Pending.



EXTENSION HEADS



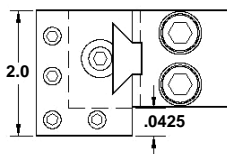
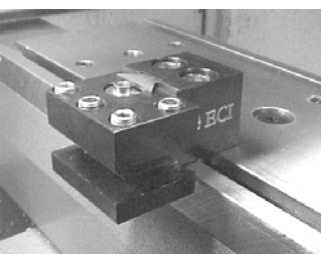
FEATURES:

- Compact-Post is only 1.50" wide.
- Double cap head bolts for solid lock down to the table.
- Vibration free double bolted dovetail.
- Can be used on either side of the work piece.
- Fine adjustment leveling screw for precise centering.
- Holds square tools up to 0.5".
- All components are hardened alloy steel.

Description	A	Part Number	Price
Post & dovetail 1/2" center height	-	EC-PPS-0150	\$93.10
Post & dovetail 3/4" center height	-	EC-PPS-0175	\$102.90
1" extension for 1/2" square turning tool	1.625	EC-PEX-2100	\$93.10
2" extension for 1/2" square turning tool	2.625	EC-PEX-2200	\$112.70
3" extension for 1/2" square turning tool	3.625	EC-PEX-2300	\$122.50

VICE JAWS
VICE ACCESSORIES

COMBO TURN HEADS



FEATURES:

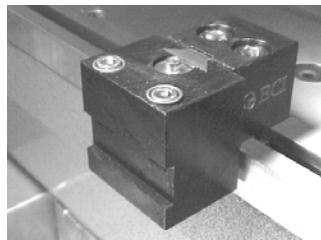
- Accepts up to 0.50" square tools
- Used in turning and / or facing.
- Available in right or left hand to accommodate any application.
- Fine adjustment leveling screw for precise centering.
- Easy change over for modular tooling.
- Could be used to hold 2 tools.

Description	Part Number	Price
Combo holder for 1/2" square turning and/or facing / right hand	EC-PST-2106	\$112.70
Combo holder for 1/2" square turning and/or facing / left hand	EC-PST-2107	\$112.70
Post & dovetail 1/2" center height	EC-PPS-0150	\$93.10
Post & dovetail 3/4" center height	EC-PPS-0175	\$102.90



STRAIGHT SHANK
COLLET HOLDERS

REPLACEABLE BLADE CUT-OFF HEAD



FEATURES:

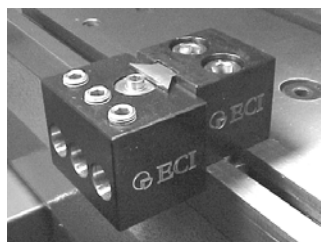
- Accepts 0.04" to 0.125" wide blades. 5/8" to 11/16" high
- Position on far side of table to conserve space.
- Right or left hand approach.
- Sturdy design insures straight cuts.
- Fine adjustment leveling screw for precise centering.
- Easy change over for modular tooling.
- Post sold separately.

Description	Part Number	Price
Straight 11/16" T blade cut-off holder	EC-PCO-2160	\$93.10
Post & dovetail 1/2" center height	EC-PPS-0150	\$93.10
Post & dovetail 3/4" center height	EC-PPS-0175	\$102.90



LATHES BUSHINGS
DRILL CHUCKS

3 POSITION HEAD



FEATURES:

- Use three drills or other tools only taking 2" of space.
- Uses 1/2" standard bushings.
- Fine adjustment leveling screw for precise centering.
- Post sold separately.

Description	Part Number	Price
Compact 3 close spacing 1/2" bushing drill holder	EC-PDA-3040	\$122.50
Post & dovetail 1/2" center height	EC-PPS-0150	\$93.10
Post & dovetail 3/4" center height	EC-PPS-0175	\$102.90



CARBIDE INSERTS
THREADING/GROOVING

TURNING AND THREADING TOOLS



FEATURES:

- 5/8" shank.
- Turn and thread with one tool without reversing the spindle.
- Front and back turning possible by changing the threading insert.
- Hex key wrench included.
- Rigid, well supported.
- Hardened alloy steel.

Uses Inserts	Part Number	Price
TPGB-321 & TNMA-32NV	EC-AST-4152	\$122.50



CUTTING TOOLS
MACHINERY

THREADING DIE HOLDER



FEATURES:

- Allows threading of long small diameter threads.
- Oil wash cross holes for proper lubrication.
- 5/16" shank (also fits swiss automatics)
- Made from strong aircraft aluminum.
- Use with sliding tap holder, (not included)
- Uses 13/16" button dies.
- A great solution for single pointing small diameter threads-can thread up to 5/16"-18.
- Initially developed for Swiss cam automatics.

Description	Part Number	Price
Threading die holder, for small fine longer threads	EC-BDH-1316	\$34.30



PRECISION TOOLS
DEBURRING

COOLANT/FLUIDS
TOOL STORAGE

Call Us Or Visit Our Website For Our Complete Selection!

2010-11 Master Catalog

101

GANG TOOLING-For Hardinge Style Slide Lathes



RISER ADAPTERS

Every inch of your X travel is precious space, especially when doing intricate parts with many operations. When working with a 1 1/2+ spindle bore machine, one needs not only rigidity, but efficient use of table space. Large OEM holders address the rigidity but use a lot of area, as they are mounted directly to the machine table and must achieve a stretch of 85mm (3.346") to the spindle center. Our riser adapter systems used with the 3/4" & 1/2" center height tooling, provides: 1) More than doubling the quantity of tools, 2) a rigid work platform, 3) And a much broader selection of tooling options. Easy bolt on to all 85, 55, or 35 mm spindle center height machines.

EC-ROP-8517 (85mm) A one piece design for general use. It covers the entire useable X travel of the machine, utilizing the 1/2" or 3/4" center height tooling. **For use on Daewoo, Kia, & Hyundai machines.**
EC-ROP-8512 A one piece design for use with a sub spindle. It covers 12" of useable X travel while allowing the sub spindle to operate. Also utilizing the 3/4" center height tooling only. **For use on Daewoo, Kia, & Hyundai machines.**
EC-ROP-5512 (55mm) A one piece design for general use. Two of these units covers the entire useable X travel of the machine, utilizing the 3/4" center height tooling. **For use on some Mazak machines.**
EC-ROP-3517 (35mm) A one piece design for general use. It covers the entire useable X travel of the machine, utilizing the 1/2" center height tooling. **For use on some Wasino machines.**



If your machine or center height is not listed here, call us for pricing. We can adapt to any gang turn lathe.

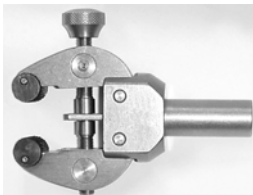


*All machines referenced are trademarks of their respective manufacturers.

Description	Height	Part Number	Price
Daewoo & Hundai -12" long riser for spindle center & sub-spindle	85mm	EC-ROP-8512	\$686.00
Daewoo & Hundai -17" long riser	85mm	EC-ROP-8517	\$735.00
Wasino Riser using 1/2" center tooling	35mm	EC-ROP-3517	\$637.00
Mazak Riser using 3/4" center tooling	55mm	EC-ROP-5512	\$686.00

COMPACT BAR PULLER

Takes Only 3/4" Of Space!

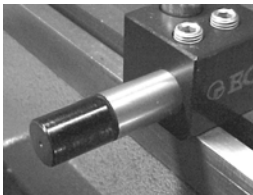


FEATURES:

- Grip range of .050" to 1.50"- will handle a wide range of materials with no tools required for adjustments.
- "Cam Grip" jaws roll on to the material with less loading on the lathe than other bar puller designs.
- Compact bar puller releases with a simultaneous X and Z movement.
- Made of stainless steel and brass-ensures long life and corrosion protection.
- Cam grippers are hardened tool steel.
- Available with standard 5/8" round shaft.

Description	Part Number	Price
Cam Action Bar Puller - 5/8" shaft x 3/4" width	EC-ABP-0050	\$289.10

REVOLVING STOPS



FEATURES:

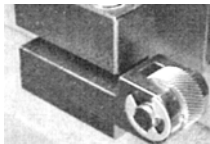
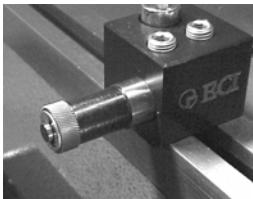
- Smooth rotating head and positive stopping action insures precise feed outs with out the need for facing.
- Can withstand severe conditions and still outperform other types on the market.

Shank Dia	Part Number	Price
5/8"	EC-ARS-0050	\$34.30
3/4"	EC-ARS-0060	\$44.10
1"	EC-ARS-0080	\$49.00

KNURLING TOOLS

FEATURES:

- The perfect tool when space is an issue.
- Knurl from either side to save travel time.
- Quick change c-clip release.
- Hardened alloy steel.
- Uses GK series knurls (not included).



Side Knurling Tool
Axial Approach Knurling Tool

Description	Shank	Knurl ID	Part Number	Price
Side approach, for GK knurls	Square	.250	EC-AKR-0375	\$55.13
Axial approach, for GK / KN knurls	5/8"	.250	EC-AKA-6250	\$29.40
Axial approach, for GK / KN knurls	3/4"	.250	EC-AKA-7500	\$34.30
Axial approach, for PH knurls	3/4" HD	.500	EC-AKA-7501	\$37.73

DRILL BUSHINGS



FEATURES:

- 3 sets available in each size-fraction, wire, & letter.
- Split for easy insertion.
- Banded to prevent loss.
- Hardened alloy steel.

OD	Range	Set Qty	Part Number	Price
1/2"	5/64 thru 3/8	20	EC-ABD-2140	\$220.50
1/2"	#1 thru #47	47	EC-ABD-2141	\$431.20
1/2"	A thru Z	26	EC-ABD-2142	\$292.04
5/8"	3/32 thru 1/2	30	EC-ABD-2150	\$292.04
5/8"	#1 thru #41	41	EC-ABD-2151	\$436.10
5/8"	A thru Z	26	EC-ABD-2152	\$292.04

TAP BUSHINGS

FEATURES:

- 8 piece set 0-80 thru 1/2"-13
- Split for easy insertion.
- Square drive for positive locking.
- Twist-torque design won't pull out.
- Hardened alloy steel.



OD	Range	Set Qty	Part Number	Price
1/2"	0-80 thru 1/2-13	8	EC-ABT-2100	\$147.00

Call Us Today For All Of Your Machine Tool Needs!