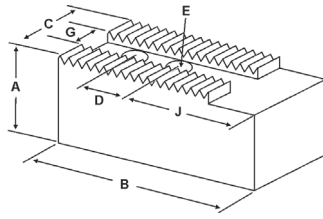


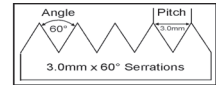
SOFT JAWS- 3.0 mm x 60° Serrations

C

FOR USE ON: **Kitagawa®, Samchully®, MMK Matsumoto, Howa & Other Chucks**



- 3.0mm x 60° serrations
- Supplies maximum concentricity on finish turning operations
- Can be bored or turned to fit workpiece
- Steel jaws can be hardened
- Available flat ended or pointed for smaller diameter parts
- Special orders available
- Available in Aluminum & Steel
- Made in the USA



Group **K3**

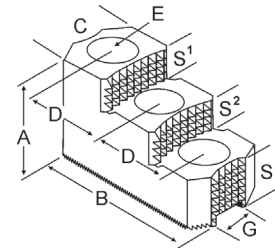
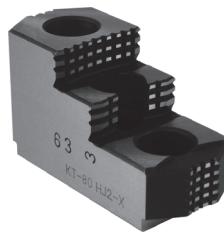
QUANTITY DISCOUNTS!
Order **5 SETS OR MORE** of the same part number soft jaw and receive a **5% DISCOUNT!**

| Group No. | Chuck Size | Critical Dimensions | | | | | | | | ALUMINUM | | STEEL | |
|--|------------|---------------------|--------------|--------------|-------------|-----------------|--------------|---------------|--------------|----------------------|----------------|----------------------|----------------|
| | | Groove Width G | Screw Size E | Hole Space D | Hght Inch A | Hole to Front J | Width Inch C | Length Inch B | No. of Holes | FLAT END Part Number | Price Set Of 3 | FLAT END Part Number | Price Set Of 3 |
| K3-21-40 | 15 | 0.827 (21mm) | 16mm | 1.575 (40mm) | 2.50 | 3.187 | 2.000 | 6.000 | 2 | H3-15258AF | \$121.79 | H3-15258F | \$136.84 |
| HO15M15, HO 22M12 | | | | | 4.00 | 3.187 | 2.000 | 6.000 | 2 | H3-15408AF* | \$152.08 | H3-15408F* | \$168.41 |
| | | | | | 4.50 | 3.187 | 2.000 | 6.000 | 2 | H3-15458AF | \$150.84 | H3-15458F | \$168.41 |
| K3-22-50 | 15 - 18 | 0.866 (22mm) | 20mm | 1.969 (50mm) | 2.50 | 3.187 | 2.500 | 6.250 | 2 | M3-15250AF | \$135.40 | M3-15250F | \$151.59 |
| MMK HA-18-162, HA11-15, Samchully MH-218 | | | | | 3.00 | 3.187 | 2.500 | 6.250 | 2 | M3-15300AF | \$141.56 | M3-15300F | \$157.91 |
| | | | | | 4.00 | 3.187 | 2.500 | 6.250 | 2 | M3-15400AF | \$170.43 | M3-15400F | \$189.48 |
| | | | | | 5.00 | 3.187 | 2.500 | 6.250 | 2 | M3-15500AF | \$271.18 | M3-15500F | \$295.68 |
| | | | | | 6.00 | 3.187 | 2.500 | 6.250 | 2 | M3-15600AF | \$343.39 | M3-15600F | \$351.87 |
| K3-25-51 | 18 - 21 | 0.984 (25mm) | 20mm | 2.000 (51mm) | 4.00 | 5.430 | 2.50 | 8.500 | 2 | K3-21403AF* | \$202.73 | K3-21403F* | \$232.80 |
| K3-25-60 | 18 - 21 | 0.984 (25mm) | 20mm | 2.360 (60mm) | 2.50 | 3.070 | 2.500 | 7.000 | 2 | K3-21250AF | \$148.34 | K3-21250F | \$188.67 |
| KITAGAWA B-21, B-24 | | | | | 4.00 | 3.070 | 2.500 | 7.000 | 2 | K3-21400AF | \$178.84 | K3-21400F | \$207.41 |
| | | | | | 6.00 | 3.070 | 2.500 | 7.000 | 2 | K3-21600AF | \$368.58 | K3-21600F | \$491.06 |
| K3-25-80 | 24 | 0.984 (25mm) | 20mm | 3.150 (80mm) | 2.50 | 3.850 | 3.000 | 8.500 | 2 | K3-24250AF | \$287.59 | K3-24250F | \$338.62 |
| UVE-800LB | | | | | 4.00 | 3.850 | 3.000 | 8.500 | 2 | K3-24400AF | \$379.05 | K3-24400F | \$463.76 |
| K3-26-42 | 15 | 1.023 (26mm) | 20mm | 1.656 (42mm) | 2.50 | 2.687 | 2.000 | 5.750 | 2 | H3-15254AF | \$103.33 | H3-15254F | \$115.79 |
| HO27M15 | | | | | 4.00 | 2.687 | 2.000 | 5.750 | 2 | H3-15404AF | \$132.35 | H3-15404F | \$147.39 |
| K3-26-50 | 18 - 20 | 1.023 (26mm) | 20mm | 1.969 (50mm) | 2.50 | 3.187 | 2.500 | 6.250 | 2 | H3-15250AF | \$135.40 | H3-15250F | \$151.59 |
| HO1MA15 | | | | | 4.00 | 3.187 | 2.500 | 6.250 | 2 | H3-15400AF | \$170.43 | H3-15400F | \$189.48 |
| | | | | | 5.00 | 3.187 | 2.500 | 6.250 | 2 | H3-15500AF | \$235.92 | H3-15500F | \$263.17 |

For "Pointed" Soft Jaws, please substitute "P" for "F" in the part number. Example: H3-15258AF will be H3-15258AP. Pointed Jaws Add \$7.00.
Soft Jaw Material: ALUMINUM-6061-T6 Bar Stock, STEEL-1018, "B" JAWS-7075-T6 Aircraft Aluminum
For complete list of applicable chucks, see pages 542-554. * denotes non-stock item. Please allow 1 week manufacturing time.

HARD JAWS-2 STEP 3.0mm x 60° Serrations

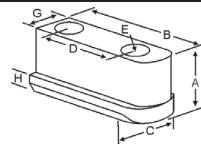
- Designed for first operation roughing, expect standard runout between 0.005-0.010
- Reversible-suitable for OD & ID workholding.
- **XTRA BITE** -very aggressive bite. Has conical teeth for extra gripping power and ground body to provide improved runout.
- 1 & 2 step jaws available.



XTRA BITE

| Group Number | Chuck Size | Critical Dimensions | | | Width C | OAL B | Height A | No. of Holes | No. of Steps | Top Step Ht S1 | Mid Step Ht S2 | Bot Step Ht S3 | Part Number | Price Per Set |
|-----------------|------------|---------------------|--------------|----------------|---------|-------|----------|--------------|--------------|----------------|----------------|----------------|-------------|---------------|
| | | Groove Width G | Screw Size E | Hole Space D | | | | | | | | | | |
| K3-22-50 | 15 | 0.866 (22mm) | 20mm | 1.969 (50mm) | 2.500 | 6.500 | 3.469 | 3 | 2 | 0.950 | 0.950 | 1.569 | M3-150HJ2-X | \$960.59 |
| K3-25-49 | 18-24 | 0.984 (25mm) | 20mm | 1.907 (48.5mm) | 2.500 | 6.500 | 3.469 | 3 | 2 | 0.950 | 0.950 | 1.569 | K3-240HJ2-X | \$960.59 |

JAW NUTS & SCREWS



| Chuck Make & Model | Chuck Size | Heel Height H | Groove Width G | Critical Dimensions | | | | 2 Screws Included With Each Jaw Nut | | | | |
|---------------------|------------|---------------|----------------|---------------------|--------------|-------------|--------------|-------------------------------------|---------------------|------------|-------------------|------------|
| | | | | Screw Size E | Hole Space D | Hght Inch A | Width Inch C | Length Inch B | Jaw Nut Part Number | Price Each | Screw Part Number | Price Each |
| MMK: HO15M15 | 15 | 0.413 | 0.826(21mm) | M16-2.00 x 40mm | 1.575(40mm) | 1.141 | 1.000 | 2.560 | H3-158JN | \$55.17 | M1620040 | \$2.25 |
| Samchully: MH-218 | 18 | 0.650 | 0.866 (22mm) | M20-60mm | 1.969 (50mm) | 1.791 | 1.318 | 3.150 | KT-MH-218JN | \$58.14 | M20X60 | \$2.25 |
| Kitagawa: B-21,B-24 | 18 - 24 | 0.748 | 0.984(25mm) | M20-2.50 x 50mm | 2.362(60mm) | 1.772 | 1.476 | 3.543 | KT-240JN | \$70.40 | M2025050 | \$3.25 |
| - | 21-24 | 0.748 | 0.984(25mm) | M20-2.50 x 50mm | T-Nut | 1.772 | 1.476 | 1.811 | KT-210JN | \$60.31 | M2025050 | \$3.25 |
| MMK: HO27M15 | 15 | 0.669 | 1.022(26mm) | M20-2.50 x 50mm | 1.654(42mm) | 1.570 | 1.339 | 2.750 | H3-154JN | \$55.17 | M2025050 | \$3.25 |
| - | 18 - 20 | 0.669 | 1.022(26mm) | M20-2.50 x 50mm | 1.968(50mm) | 1.575 | 1.339 | 3.250 | H3-150JN | \$78.12 | M2025050 | \$3.25 |

Call Us Or Visit Our Website For Our Complete Selection!

2021-22 MASTER CATALOG

35

LATHE CHUCKS
LIVE CENTERS

WISE JAWS
WISE ACCESSORIES

STRAIGHT SHANK
COLLET HOLDERS

TAP HOLDERS
DRILL CHUCKS

CARBIDE INSERTS
THREADING/GROOVING

CUTTING TOOLS
MACHINERY

PRECISION TOOLS
DEBURRING

COOLANT/FLUIDS
TOOL STORAGE